

REVISIONS

△	
△	
△	
△	

DRAWN BY MB, AJ

REVIEWED BY CG, MB

DATE 12/22/16

PROJECT NO.

DRAWING NAME

**SITE DEVELOPMENT
PLAN FOR
BUILDING PERMIT**

SHEET NO.

SPBP-5

GENERAL SHEET NOTES

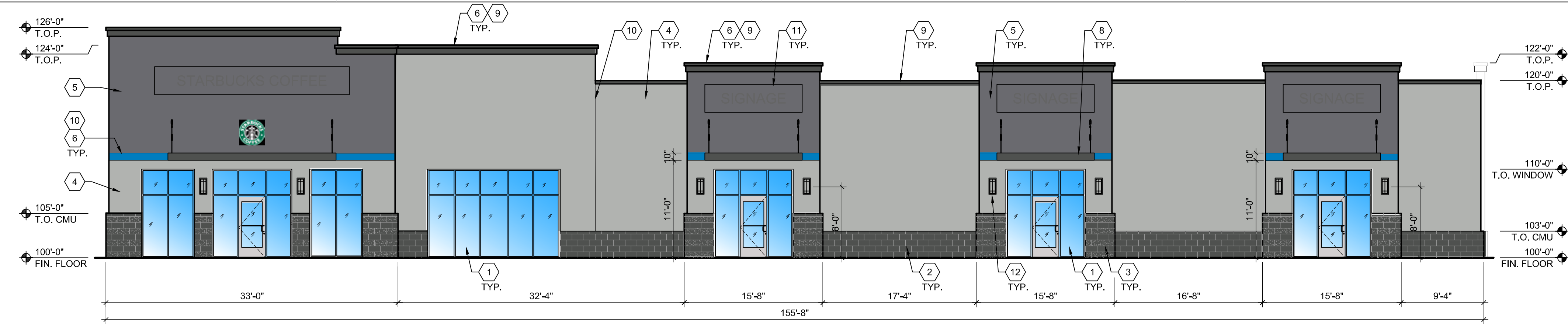
- A. BUILDING MOUNTED SIGNS SHALL COMPLY WITH GENERAL SIGN REGULATIONS SECTION 14-16-3-5 OF THE CITY OF ALBUQUERQUE ZONING CODE AND SHALL BE SUBMITTED UNDER SEPARATE PERMIT.
- B. ALL BUILDINGS SHALL BE MONITORED WITH EXTERIOR SECURITY CAMERAS.

SHEET KEYED NOTES

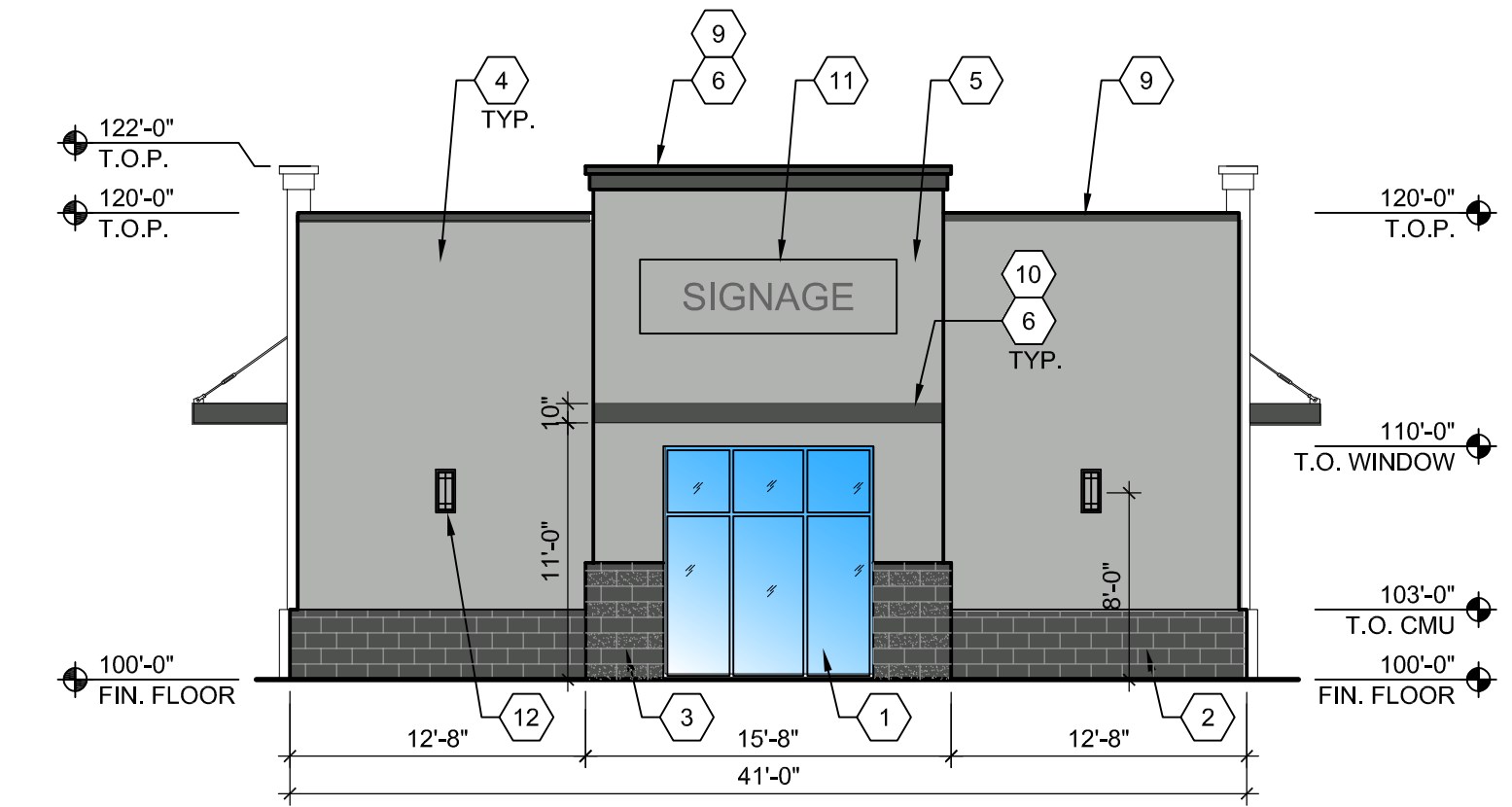
- 1. ALUMINUM STOREFRONT, COLOR: ANODIZED ALUMINUM.
- 2. CMU VENEER 1: SMOOTH-FACE, COLOR: DARK GREY.
- 3. CMU VENEER 2: SMOOTH-FACE and SPLIT-FACE, COLOR: DARK GREY.
- 4. EXTERIOR INSULATION AND FINISH SYSTEM (EIFS), COLOR 1: LIGHT GREY.
- 5. EXTERIOR INSULATION AND FINISH SYSTEM (EIFS), COLOR 2: MEDIUM GREY.
- 6. EXTERIOR INSULATION AND FINISH SYSTEM (EIFS), COLOR 3: DARK GREY.
- 7. DRIVE-UP WINDOW.
- 8. STEEL AWNING, COLOR: MEDIUM GREY.
- 9. PRE-FINISHED METAL COPING, COLOR: DARK GREY.
- 10. CONTROL JOINT.
- 11. BUILDING SIGNAGE, SEE: GENERAL SHEET NOTES.
- 12. WALL SCOSNE.
- 13. HOLLOW METAL DOOR, COLOR: TO MATCH ADJACENT WALL FINISH.

LEGEND

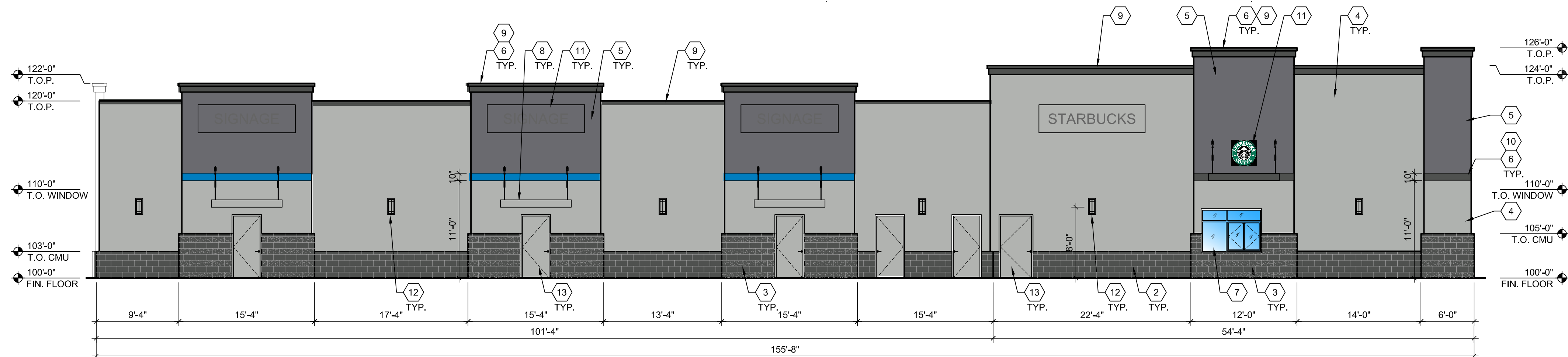
- CMU VENEER 1: SMOOTH-FACE
- COLOR: DARK GREY
- CMU VENEER 2: SMOOTH-FACE and SPLIT-FACE
- COLOR: DARK GREY
- EXTERIOR INSULATION AND FINISH SYSTEM (EIFS)
COLOR 1: LIGHT GREY
- EXTERIOR INSULATION AND FINISH SYSTEM (EIFS)
COLOR 2: MEDIUM GREY
- EXTERIOR INSULATION AND FINISH SYSTEM (EIFS)
COLOR 3: DARK GREY



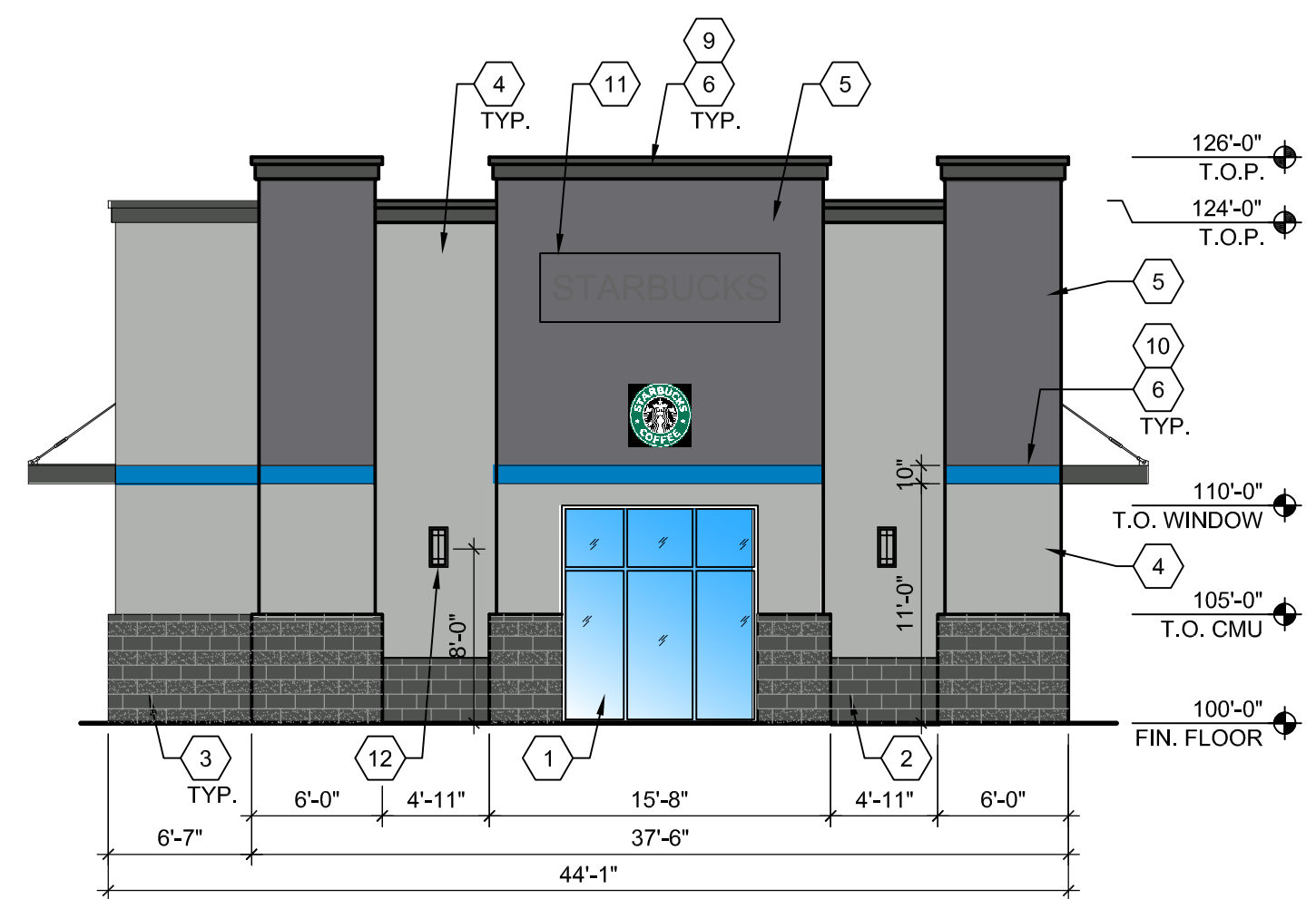
D1 BUILDING - NORTH ELEVATION (looking south) - proposed
1/8" = 1'-0"



C3 BUILDING - WEST ELEVATION (looking east) - proposed
1/8" = 1'-0"



B1 BUILDING - SOUTH ELEVATION (looking north) - proposed
1/8" = 1'-0"



A3 BUILDING - EAST ELEVATION (looking west) - proposed
1/8" = 1'-0"