

REVISIONS

△	
△	
△	
△	

DRAWN BY	MB, AJ
REVIEWED BY	CG, MB
DATE	12/22/16
PROJECT NO.	
DRAWING NAME	

**SITE DEVELOPMENT  
PLAN FOR  
BUILDING PERMIT**

SHEET NO.  
**SPBP-5**

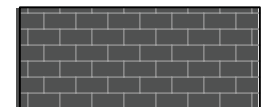





**GENERAL SHEET NOTES**

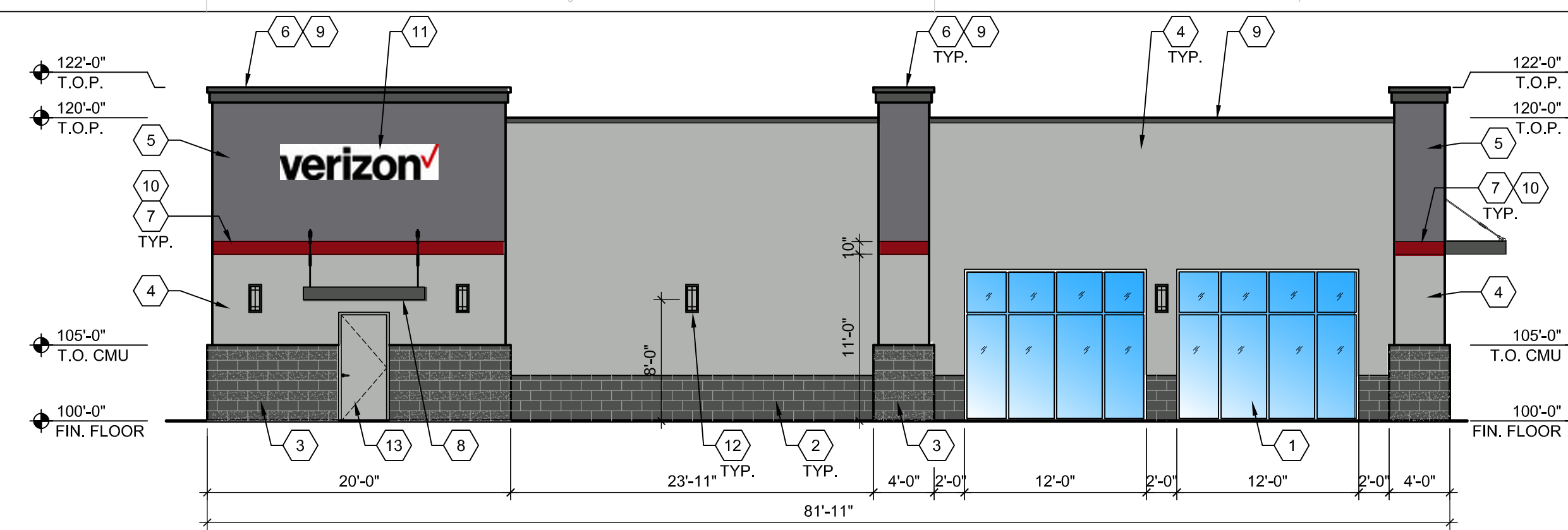
- A. BUILDING MOUNTED SIGNS SHALL COMPLY WITH GENERAL SIGN REGULATIONS SECTION 14-16-3-5 OF THE CITY OF ALBUQUERQUE ZONING CODE AND SHALL BE SUBMITTED UNDER SEPARATE PERMIT.
- B. ALL BUILDINGS SHALL BE MONITORED WITH EXTERIOR SECURITY CAMERAS.

**SHEET KEYED NOTES**

- 1. ALUMINUM STOREFRONT, COLOR: ANODIZED ALUMINUM.
- 2. CMU VENEER 1: SMOOTH-FACE, COLOR: DARK GREY.
- 3. CMU VENEER 2: SMOOTH-FACE and SPLIT-FACE, COLOR: DARK GREY.
- 4. EXTERIOR INSULATION AND FINISH SYSTEM (EIFS), COLOR 1: LIGHT GREY.
- 5. EXTERIOR INSULATION AND FINISH SYSTEM (EIFS), COLOR 2: MEDIUM GREY.
- 6. EXTERIOR INSULATION AND FINISH SYSTEM (EIFS), COLOR 3: DARK GREY.
- 7. EXTERIOR INSULATION AND FINISH SYSTEM (EIFS), COLOR 4: DARK RED.
- 8. STEEL AWNING, COLOR: MEDIUM GREY.
- 9. PRE-FINISHED METAL COPING, COLOR: DARK GREY.
- 10. CONTROL JOINT.
- 11. BUILDING SIGNAGE, SEE: GENERAL SHEET NOTES.
- 12. WALL SCONCE.
- 13. HOLLOW METAL DOOR, COLOR: TO MATCH ADJACENT WALL FINISH.

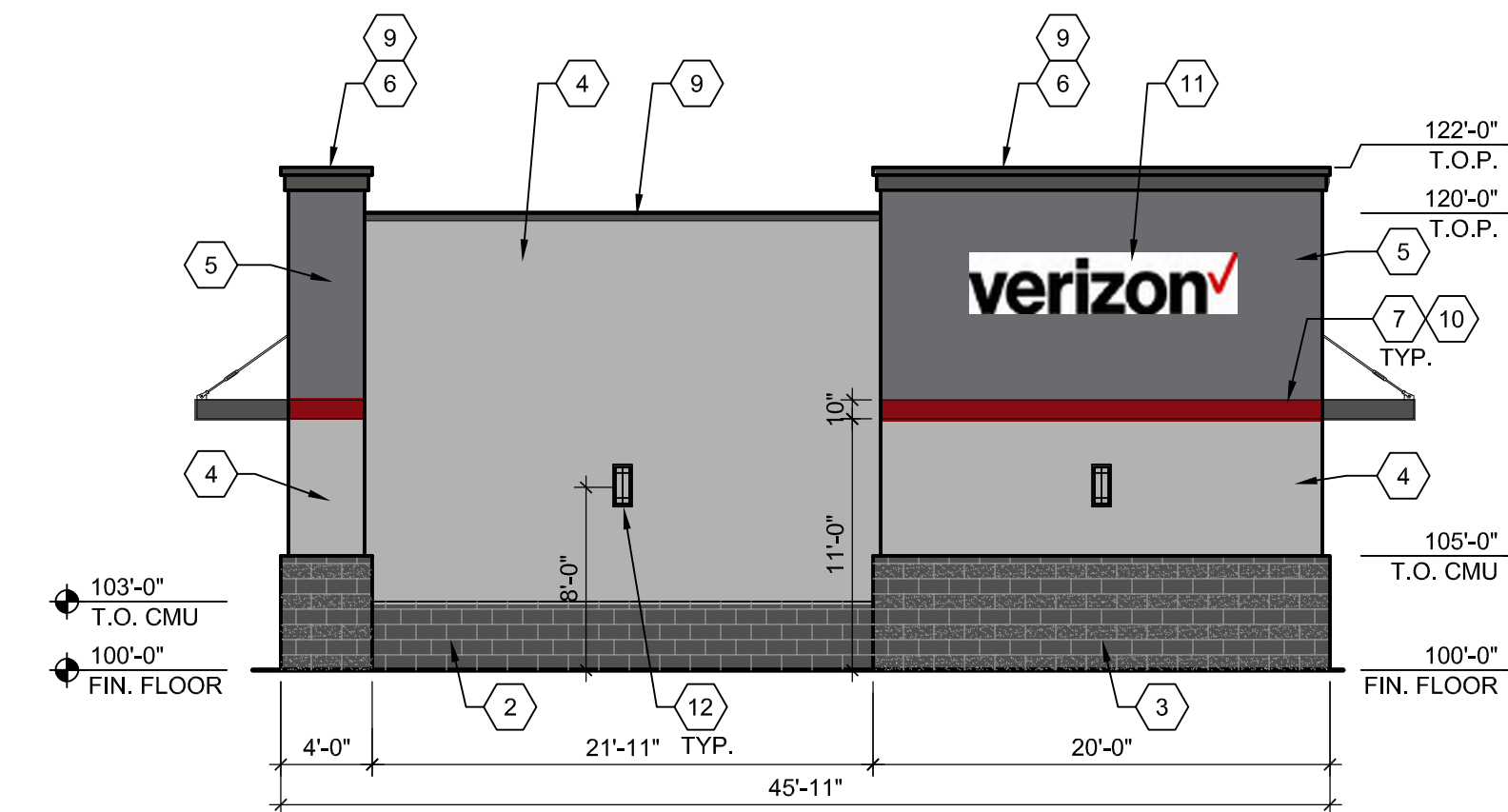
**LEGEND**

-  - CMU VENEER 1: SMOOTH-FACE  
- COLOR: DARK GREY
-  - CMU VENEER 2: SMOOTH-FACE and SPLIT-FACE  
- COLOR: DARK GREY
-  - EXTERIOR INSULATION AND FINISH SYSTEM (EIFS)  
COLOR 1: LIGHT GREY
-  - EXTERIOR INSULATION AND FINISH SYSTEM (EIFS)  
COLOR 2: MEDIUM GREY
-  - EXTERIOR INSULATION AND FINISH SYSTEM (EIFS)  
COLOR 3: DARK GREY
-  - EXTERIOR INSULATION AND FINISH SYSTEM (EIFS)  
COLOR 4: DARK RED



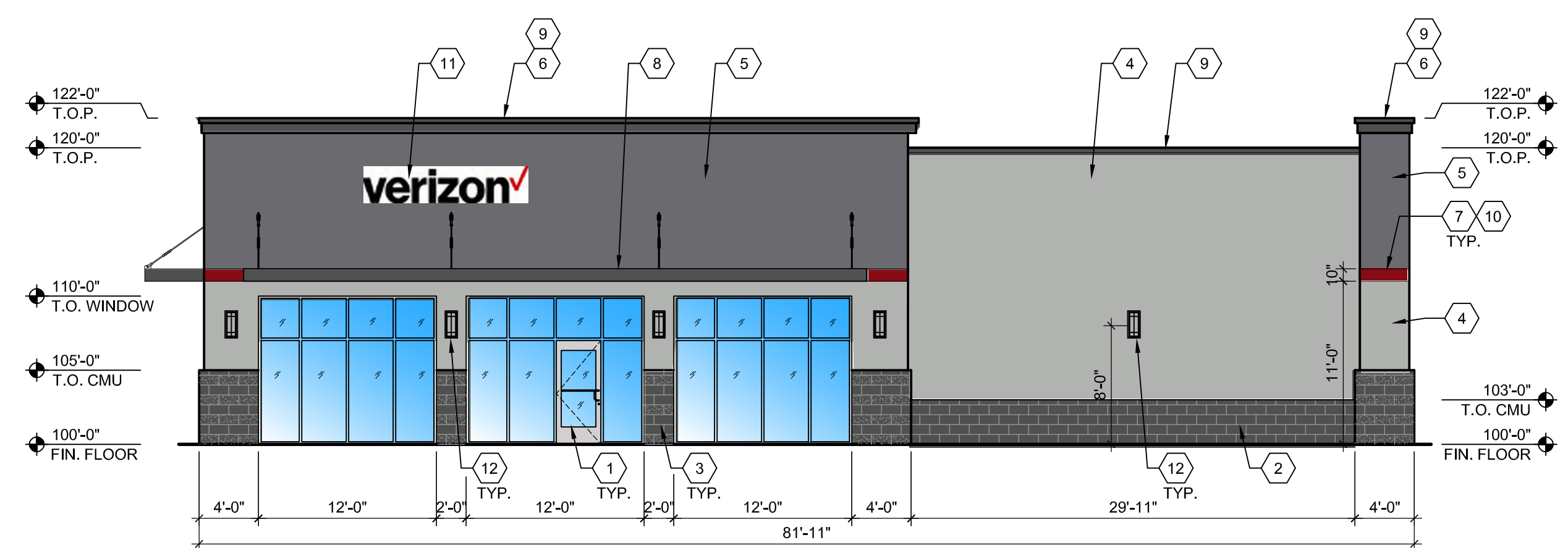
**D3** BUILDING - NORTH ELEVATION (looking south) - proposed

1/8" = 1'-0"  
0 4' 8' 16'



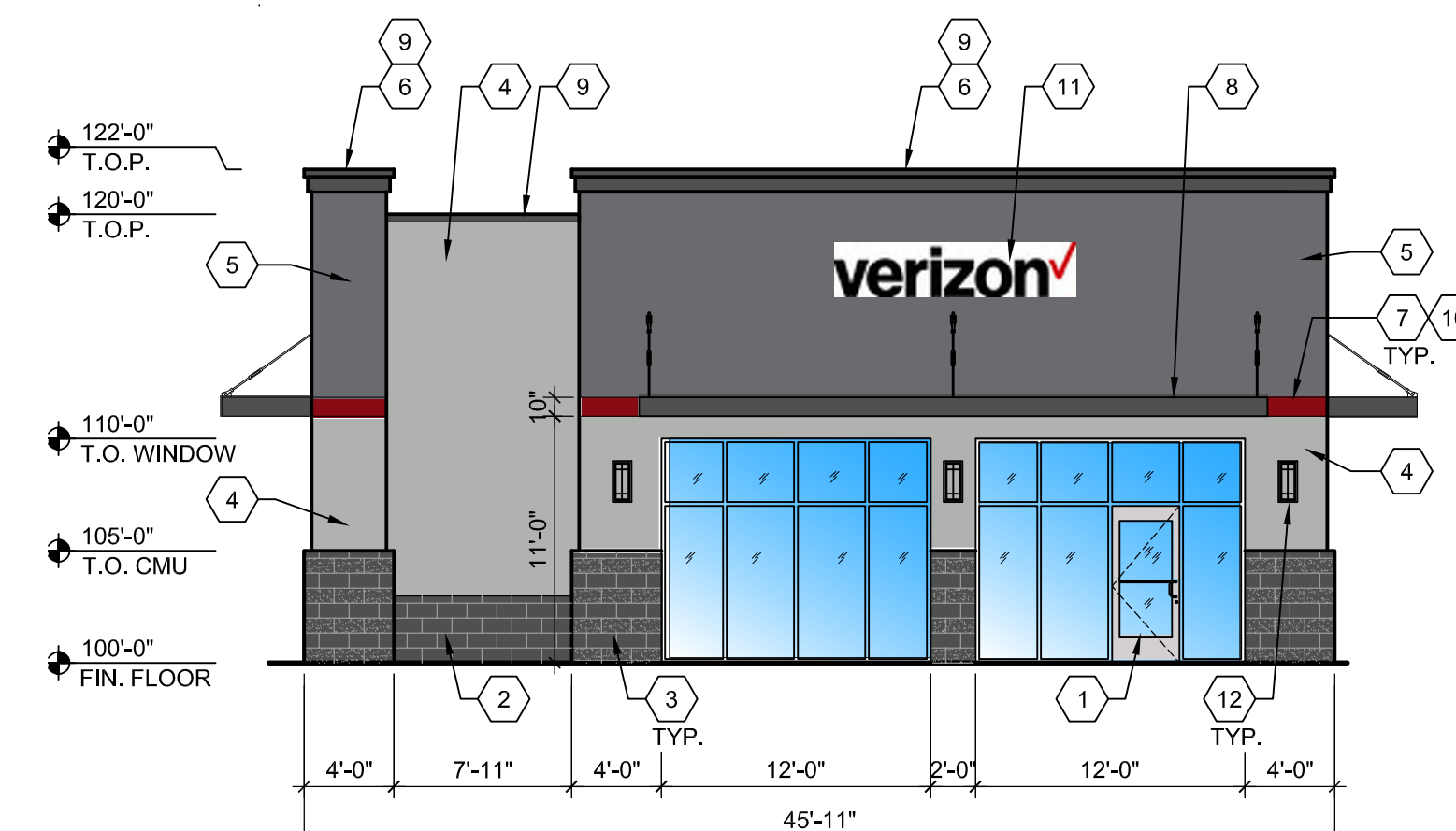
**C4** BUILDING - EAST ELEVATION (looking west) - proposed

1/8" = 1'-0"  
0 4' 8' 16'



**B3** BUILDING - SOUTH ELEVATION (looking north) - proposed

1/8" = 1'-0"  
0 4' 8' 16'



**A4** BUILDING - WEST ELEVATION (looking east) - proposed

1/8" = 1'-0"  
0 4' 8' 16'