

PLANT LEGEND/Site

Qty.	Symbol	Scientific Name Common Name	Installed Size	Mature Height/Spread	Landscape Coverage	Water Use	Drip Emitters
5		Quercus buckleyi Texas Red Oak	2" B&B	40'/35'	50 sf=250 sf	Medium	6-2 gph
8		Fraxinus Autumn Purple Ash	2" B&B	40'/40'	50 sf=400 sf	Medium	+6-2 gph
7		Gleditsia triacanthos Honeylocust	2" B&B	80'/80'	50 sf=350 sf	Medium	6-2 gph
9		Pistacia chinensis Chinese Pistache	2" B&B	60'/60'	50 sf=450 sf	Medium	+6-2 gph
9		Celtis Hackberry	2" B&B	40'/40'	50 sf=450 sf	Medium	6-2 gph
4		Pinus nigra Austrian Pine	6" HT.	30'/20'	50 sf=400 sf	Medium	6-2 gph
2		Pinus Bosnian Pine	6" HT.	15'/8'	50 sf=200 sf	Medium	6-2 gph

Shrubs/Groundcovers

9		Caesalpinia Bird of Paradise	5-Gal	8'/8"	64 sf=576 sf	Medium	2-2 gph
8		Buddleia davidii Butterfly Bush	1-Gal	6'/6"	36 sf=288 sf	Medium	2-2 gph
23		Caryopteris clandonensis Blue Mist	1-Gal	4'/4"	25 sf=575 sf	Medium	2-2 gph
6		Vauquelinia Rosewood	5-Gal	10'/10"	100 sf=600 sf	Medium	2-2 gph
25		Rhus aromatica Gro Low Sumac	5-Gal	2'/6"	36 sf=900 sf	Low +	2-2 gph
35		Ericameria laricifolia 'Aguirre' Turpentine Bush	5-Gal	3'/4"	25 sf=875 sf	Low	2-1 gph
30		Yucca baccata Datil	5-Gal	3'/3"	27 sf=810 sf	Medium+ 2-1 gph	
11		Salvia greggii Cherry Sage	1-Gal	3'/3"	15 sf=165 sf	Medium	2-1 gph
20		Hesperaloe parviflora Red Yucca	5-Gal	3'/4"	30 sf=600 sf	Low	2-2 gph
24		Juniperus sabina 'Buffalo' Buffalo Juniper (female)	5-Gal	2'/6"	36 sf=864 sf	Low +	2-2 gph
18		Dasylistron Sotol	1-Gal	3'/3"	27 sf=486 sf	Medium	2-2 gph
21		Prunus cistena Dwarf Red Leaf Plum	5-Gal	6'/6"	36 sf=756 sf	Medium	2-2 gph
22		Rosmarinus officinalis Rosemary	5-Gal	6'/6"	36 sf=792 sf	Low +	2-2 gph
16		Rosa Knockout Rose	5-Gal	3'/3"	15 sf=180 sf	Medium+	2-2 gph
10		Lagerstroemia Crape Myrtle	5-Gal	15'/10"	100 sf=1000 sf	Medium+	2-2 gph
27		Nepeta Catmint	1-Gal	1'/3"	6 sf=162 sf	Medium	2-2 gph
38		Rhapiolepis India Hawthorn	5-Gal	3'/3"	15 sf=570 sf	Medium	2-2 gph
8		Coloneaster parneyi Clusterberry	5-Gal	10'/10"	100 sf=800 sf	Medium	2-2 gph
19		Lavandula Lavender	1-Gal	3'/3"	12 sf=228 sf	Medium	2-2 gph

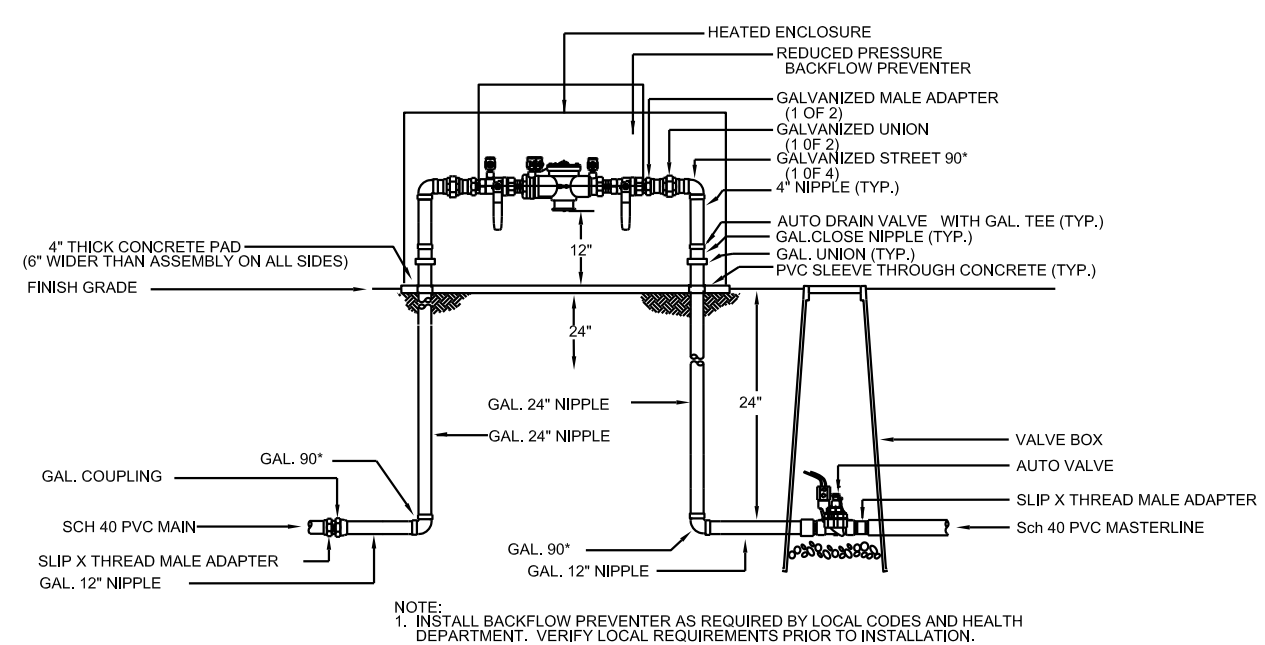
Grasses

20		Muhlenbergia Deer Grass	1-Gal	4'/4"	20 sf=400 sf	Low+	2-2 gph
12		Panicum Switch Grass	1-Gal	8'/6"	36 sf=432 sf	Medium	2-2 gph
74		Calamagrotis Karl Foerster Grass	5-Gal	3'/2"	10 sf=740 sf	Medium	2-2 gph

Total Landscape Coverage=15,259 SF

MATERIALS LEGEND

- BROWN CRUSHER FINES
- 1"-2" BLUE SAIZ GRAVEL



RP BACKFLOW/MASTER VALVE DETAIL

SITE DATA/Site

GROSS LOT AREA (2.63 ac.)	114,851 SF
LESS BUILDING(S)	13,500 SF
NET LOT AREA	101,351 SF
REQUIRED LANDSCAPE 15% OF NET LOT AREA	15,203 SF
PROPOSED LANDSCAPE PERCENT OF NET LOT AREA	19.907 SF
116 SPACES/10	19 %
HIGH WATER USE TURF MAX. 20% OF LANDSCAPE AREA	0 SF
PROPOSED HIGH WATER USE TURF PERCENT OF LANDSCAPE AREA	0 %
REQUIRED STREET TREES 1 PER 25 LF. OF STREET FRONTAGE	14
PROVIDED STREET TREES	14
REQUIRED PARKING LOT TREES 1 PER 10 SPACES	12
PROVIDED PARKING LOT TREES	14
TOTAL TREE REQUIRED/PROVIDED (2" cal or 6" ht.)	24/52
REQUIRED LANDSCAPE COVERAGE 75% LIVE VEGETATIVE MATERIAL	14,930 SF MIN.
119,907 SF PROPOSED LANDSCAPE X 75%	15,259 SF
PROVIDED GROUND COVER COVERAGE PERCENT GROUND COVER COVERAGE OF REQUIRED LANDSCAPE AREAS	76%

NOTE

MAINTENANCE OF LANDSCAPE (ONSITE AND WITHIN ROW) TO BE MAINTAINED BY PROPERTY OWNER

PLANTINGS TO BE WATERED BY AUTO. DRIP IRRIGATION SYSTEM WITH REDUCED PRESSURE BACKFLOW PREVENTER PER CITY OF ALBUQUERQUE

WATER MANAGEMENT IS THE SOLE RESPONSIBILITY OF THE PROPERTY OWNER

THIS PLAN IS TO COMPLY WITH C.O.A. LANDSCAPE AND WATER WASTE ORDINANCE 6-1-1. PLANTING RESTRICTIONS APPROACH

IT IS THE INTENT OF THIS PLAN TO PROVIDE MIN. 75% LIVE GROUNDCOVER OF LANDSCAPE AREAS AT MATURITY PER ORDINANCE 14-16-3-10 (SEE CALCULATIONS PROVIDED ABOVE)

LANDSCAPE AREAS TO BE MULCHED WITH GRAVEL MULCH AT 3" DEPTH OVER FILTER FABRIC

APPROVAL OF THE LANDSCAPE PLAN DOES NOT CONSTITUTE OR IMPLY COMPLIANCE WITH, OR EXEMPTION FROM, THE C.O.A LANDSCAPE AND WATER WASTE ORDINANCE 6-1-1.

NO PARKING SPACE SHALL BE MORE THEN 100' FROM A TREE.

STREET TREES TO CONFORM TO STREET TREE ORDINANCE 6-6-2.

LANDSCAPE PLAN TO CONFORM TO ZONING REGULATIONS ORDINANCE 14-16-3-10.

LANDSCAPING AND SIGNING WILL NOT INTERFERE WITH CLEAR SIGHT REQUIREMENTS. THEREFORE, SIGNS, WALLS, TREES AND SHRUBBERY BETWEEN 3 AND 8 FEET TALL (AS MEASURED FROM THE GUTTER PAN) WILL NOT BE ALLOWED IN THIS AREA.

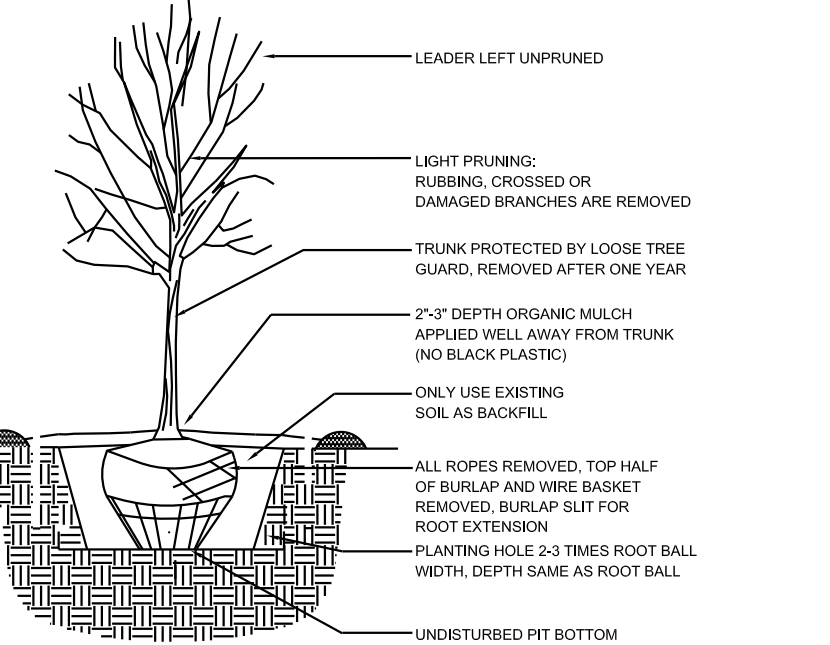
IRRIGATION SYSTEM: AN AUTOMATIC UNDERGROUND IRRIGATION SYSTEM WILL BE UTILIZED TO PROVIDE EVEN AND ADEQUATE WATER LEVELS TO ALL PLANT MATERIAL. WATER USE SHALL BE DONE IN SUCH A MANNER AS TO CONSERVE ITS USE AND PREVENT ANY AND ALL RUNOFF FROM LANDSCAPE MATERIALS. IRRIGATION SHALL BE RESTRICTED TO EARLY MORNING HOURS TO CONSERVE THIS LIMITED RESOURCE.

STREETSCAPE LANDSCAPING SHALL CONSIST PRIMARILY OF SHRUBS AND DECIDUOUS TREES IN A SETBACK AREA BETWEEN THE RIGHT-OF-WAY OF THE STREET AND THE FACE OF THE CURB OF AN ADJACENT PARKING AREA. CLEAR-SIGHT TRIANGLE REQUIREMENTS MUST BE MET.

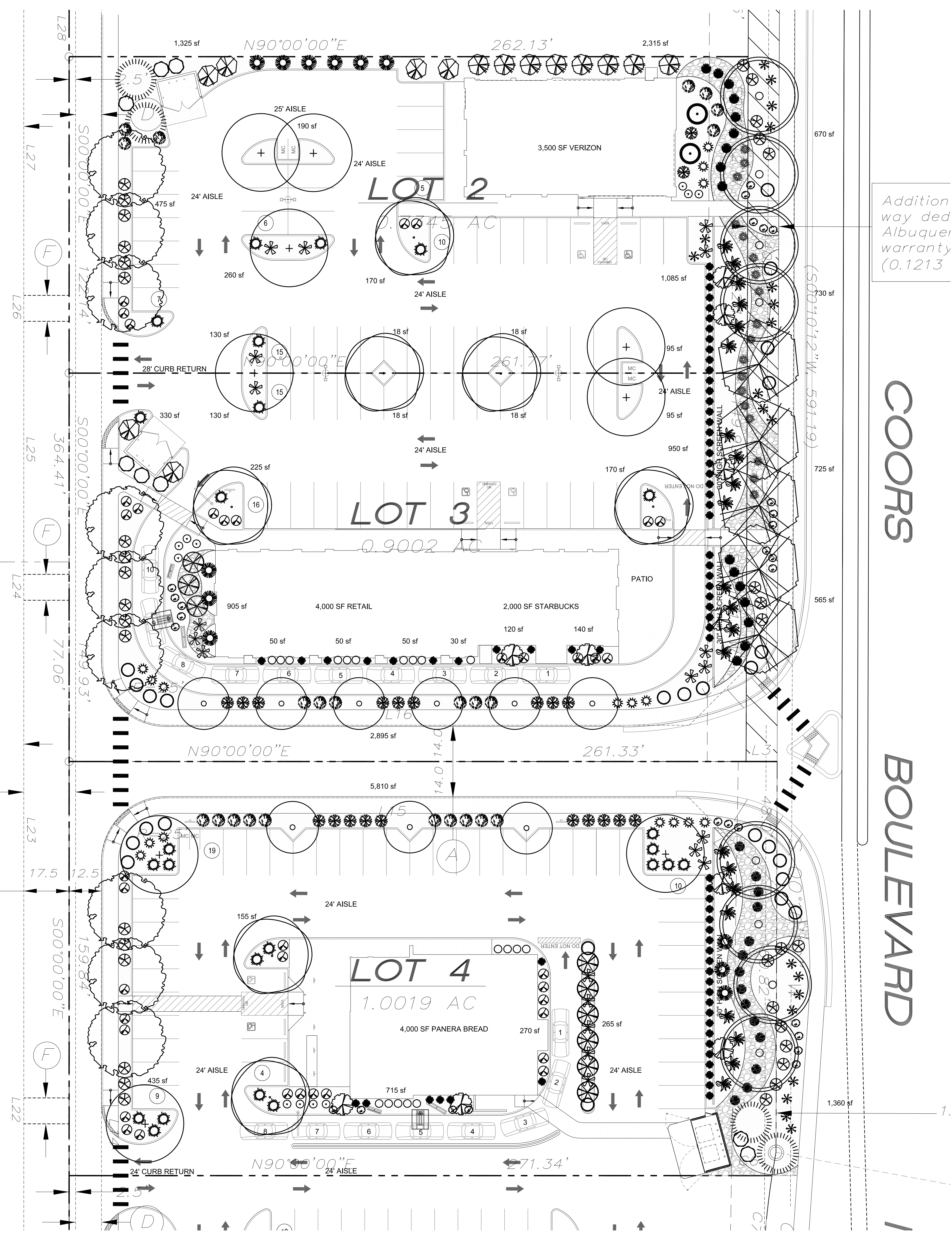
TREES IN PROXIMITY OF DUMPSTER TO BE MAINTAINED TO ALLOW FOR TRUCK ACCESS WITHOUT DAMAGE TO TRUCK OR TREES

IRRIGATION NOTE

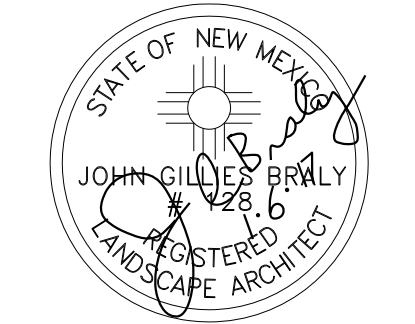
DRIP SYSTEM RUN CYCLES:
ESTABLISHMENT AND SUMMER:
1 HOUR/4 DAYS A WEEK
SPRING:
1 HOUR/2-3 DAYS A WEEK
FALL:
1 HOUR/2-3 DAYS A WEEK
WINTER:
1 HOUR/2 DAYS PER MONTH



TREE PLANTING DETAIL



PO Box 10597
Albuquerque, NM 87184
505.898.9615
505.898.2105 (fax)
design@hulc.com



Addition way ded
Albuquerque
warranty
(0.1213)

Date: 12/19/2016
Revisions:

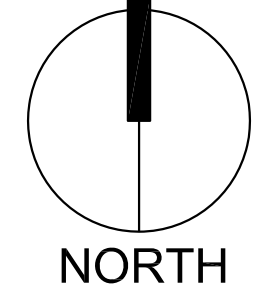
- ▲
- ▲
- ▲
- ▲

Drawn by: jc
Reviewed by: jb

COORS

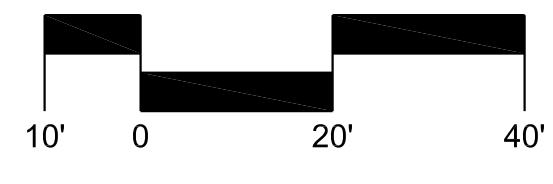
BOULEVARD

Coors Pavilion
Albuquerque, New Mexico



NORTH

Scale: 1" = 20'



Sheet Title:
Landscape Plan

Sheet Number:

B1