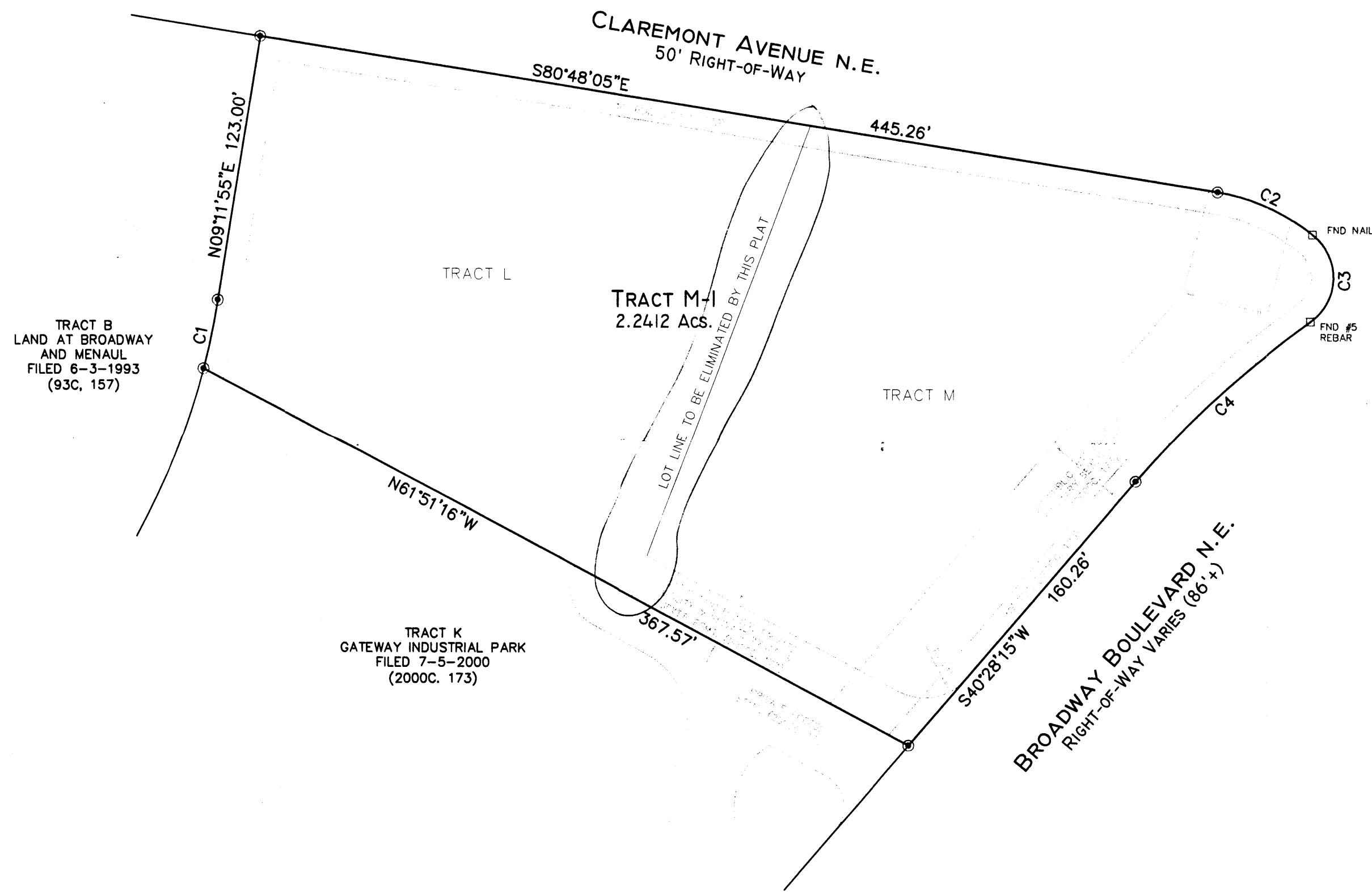


PLAT OF
TRACT M-1
GATEWAY INDUSTRIAL PARK
 PROJECTED SECTION 9, T. 10 N., R. 3 E., N.M.P.M.
 TOWN OF ALBUQUERQUE GRANT
 CITY OF ALBUQUERQUE
 BERNALILLO COUNTY, NEW MEXICO
 SEPTEMBER 2005
 SHEET 2 OF 2

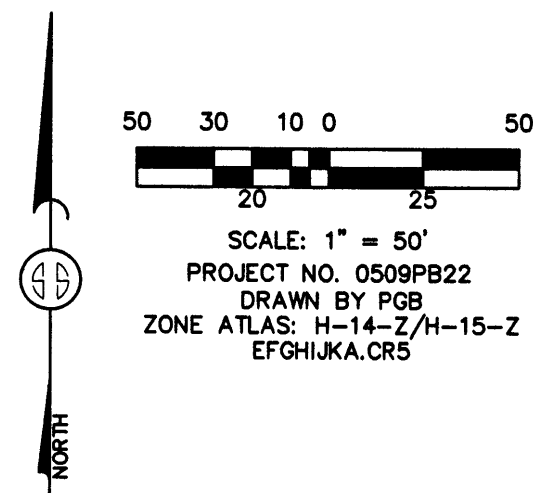
ADMINISTRATIVE AMENDMENT
 File # 064A-00030 Project # 1000195
 Site Dev. Plan for Subdivision
 amendment - consolidation of
 Tracts L & M.
 Approved By *[Signature]*
 DATE 16 Feb 2006

CURVE TABLE					
CURVE	RADIUS	LENGTH	DELTA	CHORD BEARING	CHORD LENGTH
C1	350.00'	32.08'	5°15'04"	N11°49'27"E	32.07'
C2	95.00'	48.26'	29°06'32"	N66°15'15"W	47.75'
C3	25.00'	46.27'	106°02'42"	N01°19'22"E	39.94'
C4	452.26'	109.52'	13°52'23"	S47°24'29"W	109.25'

FILE IN
 DRB#1000195



MONUMENT LEGEND
 ⊕ - FOUND CONTROL STATION AS NOTED
 □ - FOUND MONUMENT AS NOTED
 ⊙ - SET 1/2" REBAR W/YELLOW PLASTIC CAP STAMPED "GRITSKO LS8686" UNLESS OTHERWISE NOTED



SURVEYS SOUTHWEST LTD.
 333 LOMAS BLVD., N.E.
 ALBUQUERQUE, NEW MEXICO 87102
 PHONE: (505) 998-0303
 FAX: (505) 998-0306
T10N R3E SEC. 9

PROJECT # 1000195