

ORIGINAL

Figure 12

INFRASTRUCTURE LIST

EXHIBIT "A"
 TO SUBDIVISION IMPROVEMENTS AGREEMENT
 DEVELOPMENT REVIEW BOARD (D.R.B.) REQUIRED INFRASTRUCTURE LIST

**RIDGE POINTE SUBDIVISION
 PRELIMINARY PLAT**

Following is a summary of PUBLIC/PRIVATE Infrastructure required to be constructed or financially guaranteed for the above development. This Listing is not necessarily a complete listing. During the SIA process and/or in the review of the construction drawings, if the DRC Chair determines that appurtenant items and/or unforeseen items have not been included in the infrastructure listing, the DRC Chair may include those items in the listing and related financial guarantee. Likewise, if the DRC Chair determines that appurtenant or non-essential items can be deleted from the listing, those items may be deleted as well as the related portions of the financial guarantees. All such revisions require approval by the DRC Chair, the User Department and agent/owner. If such approvals are obtained, these revisions to the listing will be incorporated administratively. In addition, any unforeseen items which arise during construction which which are necessary to complete the project and which normally are the Subdivider's responsibility will be required as a condition of project acceptance and close out by the City.

SIA Sequence #	COA DRC Project #	Size	Type of Improvement	Location	From	To	Private Inspector	City Inspector	City Cnst Engineer
ONSITE PUBLIC ROADWAY IMPROVEMENTS									
		32' F-F	RESIDENTIAL PAVING W/ PCC CURB & GUTTER AND PCC 4' WIDE SIDEWALK ON EAST SIDE ONLY*	RIDGE POINTE LOOP (WEST LEG)	COMANCHE ROAD	SUN MESA DRIVE RIDGE POINTE LOOP (SOUTH LEG)	/	/	/
		28' F-F	RESIDENTIAL PAVING W/ PCC CURB & GUTTER AND PCC 4' WIDE SIDEWALK ON EAST SIDE ONLY*	RIDGE POINTE LOOP (WEST LEG)	SUN MESA DRIVE RIDGE POINTE LOOP (SOUTH LEG)	RIDGE POINTE LOOP (NORTH LEG)	/	/	/
		28' F-F	RESIDENTIAL PAVING W/ PCC CURB & GUTTER AND PCC 4' WIDE SIDEWALK ON SOUTH SIDE ONLY*	RIDGE POINTE LOOP (NORTH LEG)	RIDGE POINTE LOOP (WEST LEG)	RIDGE POINTE LOOP (EAST LEG)	/	/	/
		28' F-F	RESIDENTIAL PAVING W/ PCC CURB & GUTTER AND PCC 4' WIDE SIDEWALK ON EAST SIDE ONLY*	RIDGE POINTE LOOP (EAST LEG)	SUN MESA DRIVE	RIDGE POINTE LOOP (NORTH LEG)	/	/	/
		32' F-F	RESIDENTIAL PAVING W/ PCC CURB & GUTTER AND PCC 4' WIDE SIDEWALK ON BOTH SIDES*	SUN MESA DRIVE RIDGE POINTE LOOP (SOUTH LEG)	RIDGE POINTE LOOP (WEST LEG)	RIDGE POINTE LOOP (EAST LEG)	/	/	/
		24' F-F	RESIDENTIAL PAVING W/ PCC CURB & GUTTER AND PCC 4' WIDE SIDEWALK ON SOUTH SIDE ONLY*	SUN MESA DRIVE RIDGE POINTE LOOP (SOUTH LEG)	RIDGE POINTE LOOP (EAST LEG)	EAST STUB TERMINUS	/	/	/
			* SIDEWALKS TO BE DEFERRED. WAIVER OF SIDEWALK ON WEST SIDE OF RIDGE POINTE LOOP (WEST LEG), NORTH SIDE OF RIDGE POINTE LOOP (NORTH LEG), THE WEST SIDE OF RIDGE POINTE LOOP (EAST LEG), AND NORTH SIDE OF SUN MESA STUB				/	/	/

STREET LIGHTS AS PER COA DPM

ONSITE PUBLIC STORM DRAIN IMPROVEMENTS

--	--

/	/	/
---	---	---

NOTE: A GRADING AND DRAINAGE CERTIFICATION OF THE APPROVED GRADING PLAN IS REQUIRED PRIOR TO THE RELEASE OF FINANCIAL GUARANTEES.

SIA
Sequence #

COA DRC
Project #

Size

Type of Improvement

Location

From

Private
Inspector

City
Inspector

City Cnst
Engineer

ONSITE PUBLIC WATERLINE IMPROVEMENTS

6" DIA WATERLINE W/ NEC. VALVES
FH'S, MJ'S & RJ'S

6" DIA WATERLINE W/ NEC. VALVES
FH'S, MJ'S & RJ'S

6" DIA WATERLINE W/ NEC. VALVES
FH'S, MJ'S & RJ'S

6" DIA WATERLINE W/ NEC. VALVES
FH'S, MJ'S & RJ'S

RIDGE POINTE LOOP
(WEST LEG)

RIDGE POINTE LOOP
(NORTH LEG)

RIDGE POINTE LOOP
(SOUTH LEG)

RIDGE POINTE LOOP
(EAST LEG)

RIDGE POINTE LOOP
SUN MESA DRIVE
(SOUTH LEG)

RIDGE POINTE LOOP
(WEST LEG)

RIDGE POINTE LOOP
(WEST LEG)

SUN MESA DRIVE

RIDGE POINTE LOOP
(NORTH LEG)

TRAMWAY BLVD
RIGHT-OF-WAY

TRAMWAY BLVD
RIGHT-OF-WAY

RIDGE POINTE LOOP
(NORTH LEG)

/	/	/
/	/	/
/	/	/
/	/	/

ONSITE PUBLIC SANITARY SEWER IMPROVEMENTS

8" DIA SANITARY SEWER W/ NEC.
MH'S & SERVICES

8" DIA SANITARY SEWER W/ NEC.
MH'S & SERVICES

8" DIA SANITARY SEWER W/ NEC.
MH'S & SERVICES

8" DIA SANITARY SEWER W/ NEC.
MH'S & SERVICES

RIDGE POINTE LOOP
(WEST LEG)

RIDGE POINTE LOOP
(NORTH LEG)

RIDGE POINTE LOOP
(EAST LEG)

RIDGE POINTE LOOP
SUN MESA DRIVE
(SOUTH LEG)

RIDGE POINTE LOOP
(WEST LEG)

RIDGE POINTE LOOP
(WEST LEG)

RIDGE POINTE LOOP
SUN MESA DRIVE
(SOUTH LEG)

RIDGE POINTE LOOP
(NORTH LEG)

EAST STUB TERMINUS

RIDGE POINTE LOOP
(EAST LEG)

RIDGE POINTE LOOP
(NORTH LEG)

/	/	/
/	/	/
/	/	/
/	/	/

ORIGINAL

SCOTT STEFFEN 03/11/03
PREPARED BY: PRINT NAME DATE

Sheran Watson 3/12/2003
DRB CHAIR DATE

Christina Sandoval 3/12/03
PARKS & RECREATION DEPARTMENT DATE

BOHANNAN HUSTON INC.
FIRM:

R. D. Smith
TRANSPORTATION DEVELOPMENT DATE

AMAFCA DATE

Scott J. Steffen 3/11/03
SIGNATURE DATE

Roger Green 3/12/03
UTILITY DEVELOPMENT DATE

Brad L. Byham 3/12/03
CITY ENGINEER DATE

MAXIMUM TIME ALLOW TO CONSTRUCT
IMPROVEMENTS WITHOUT A DRB EXTENSION

3-12-05

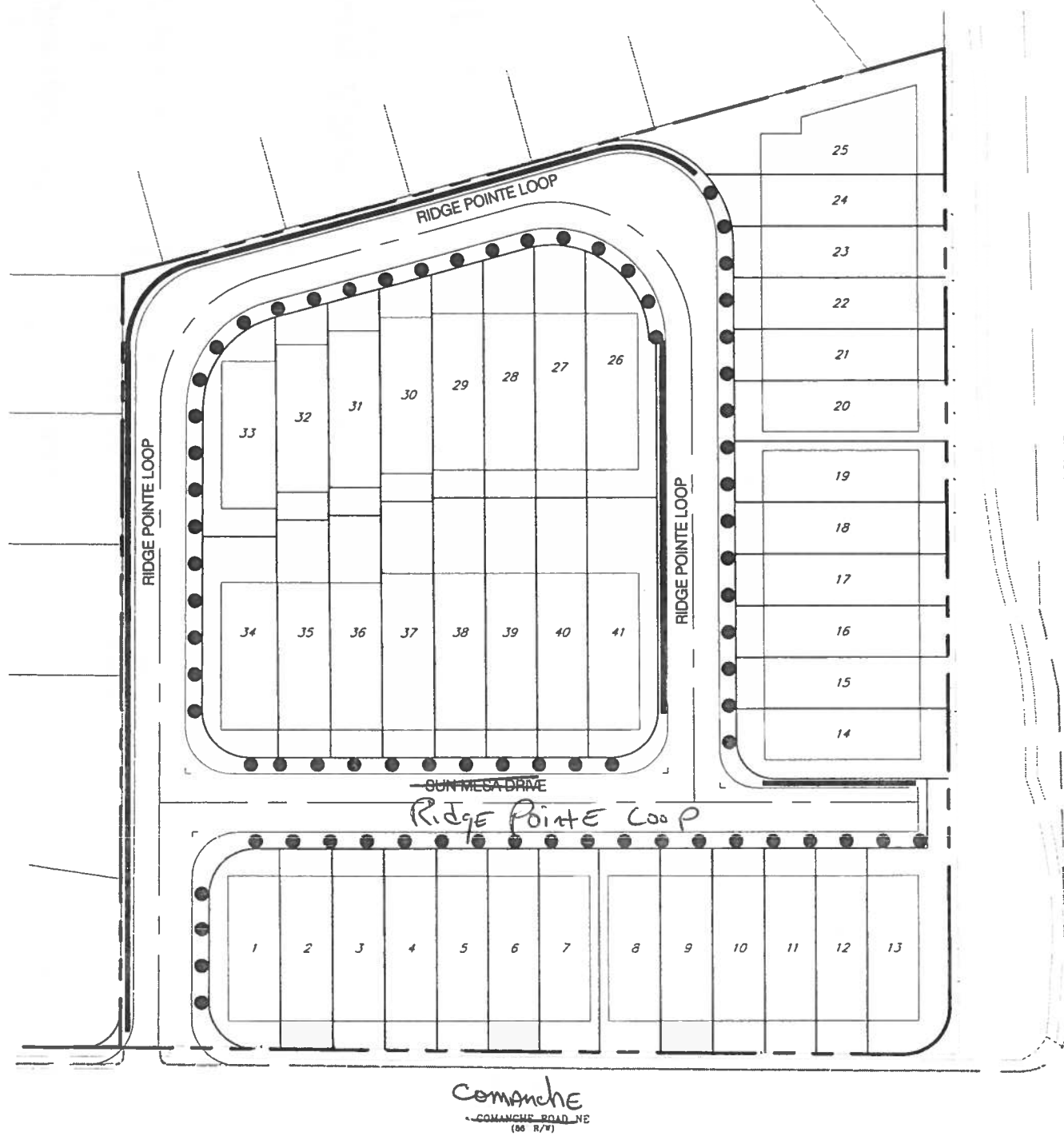
NEW MEXICO UTILITIES INC. DATE

DATE

DESIGN REVIEW COMMITTEE REVISIONS

REVISION	DATE	DRC CHAIR	USER DEPARTMENT	AGENT/OWNER

ORIGINAL



R
SIDEWAL

Boh
 Courtyard I 75
 ENGINEERING