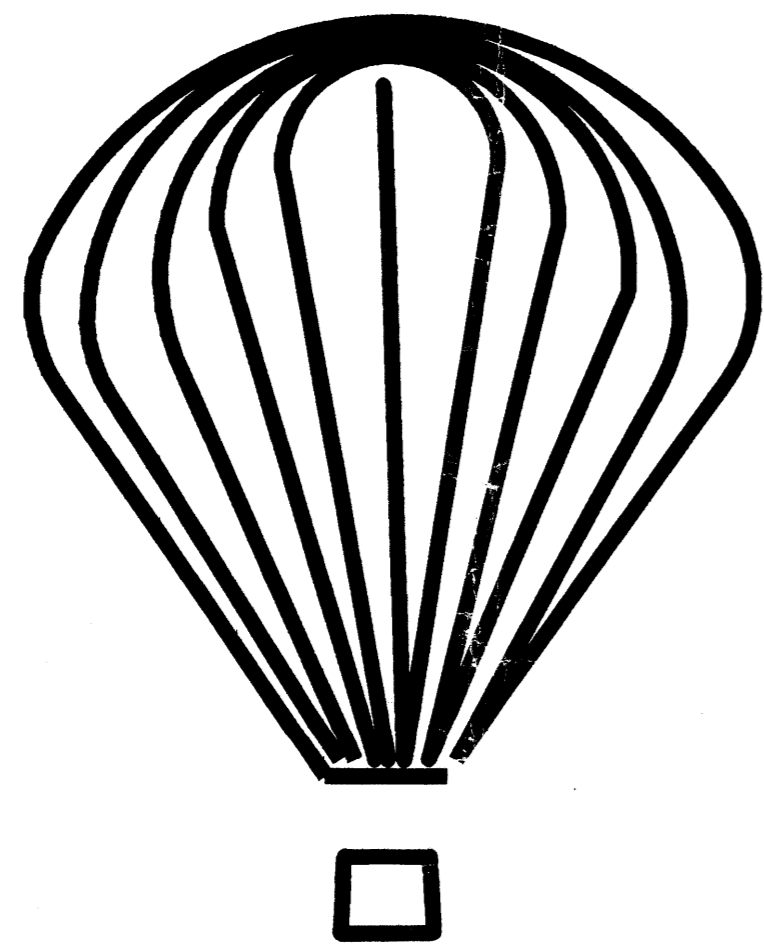


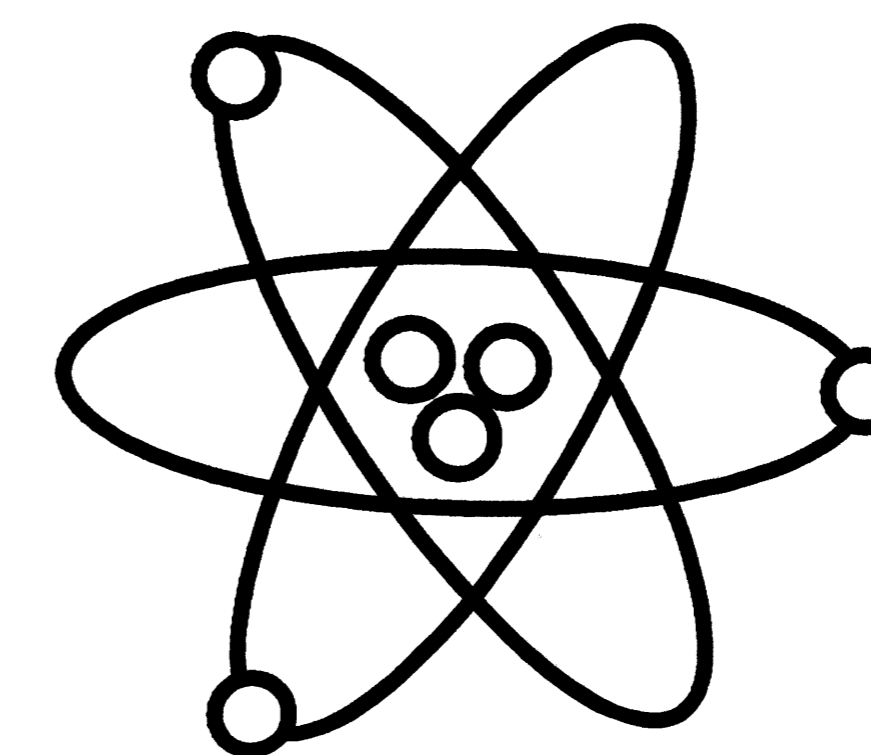
PROJ 1000363

THE MUSEUMS AT BALLOON FIESTA PARK

ANDERSON-ABRUZZO INTERNATIONAL BALLOON MUSEUM



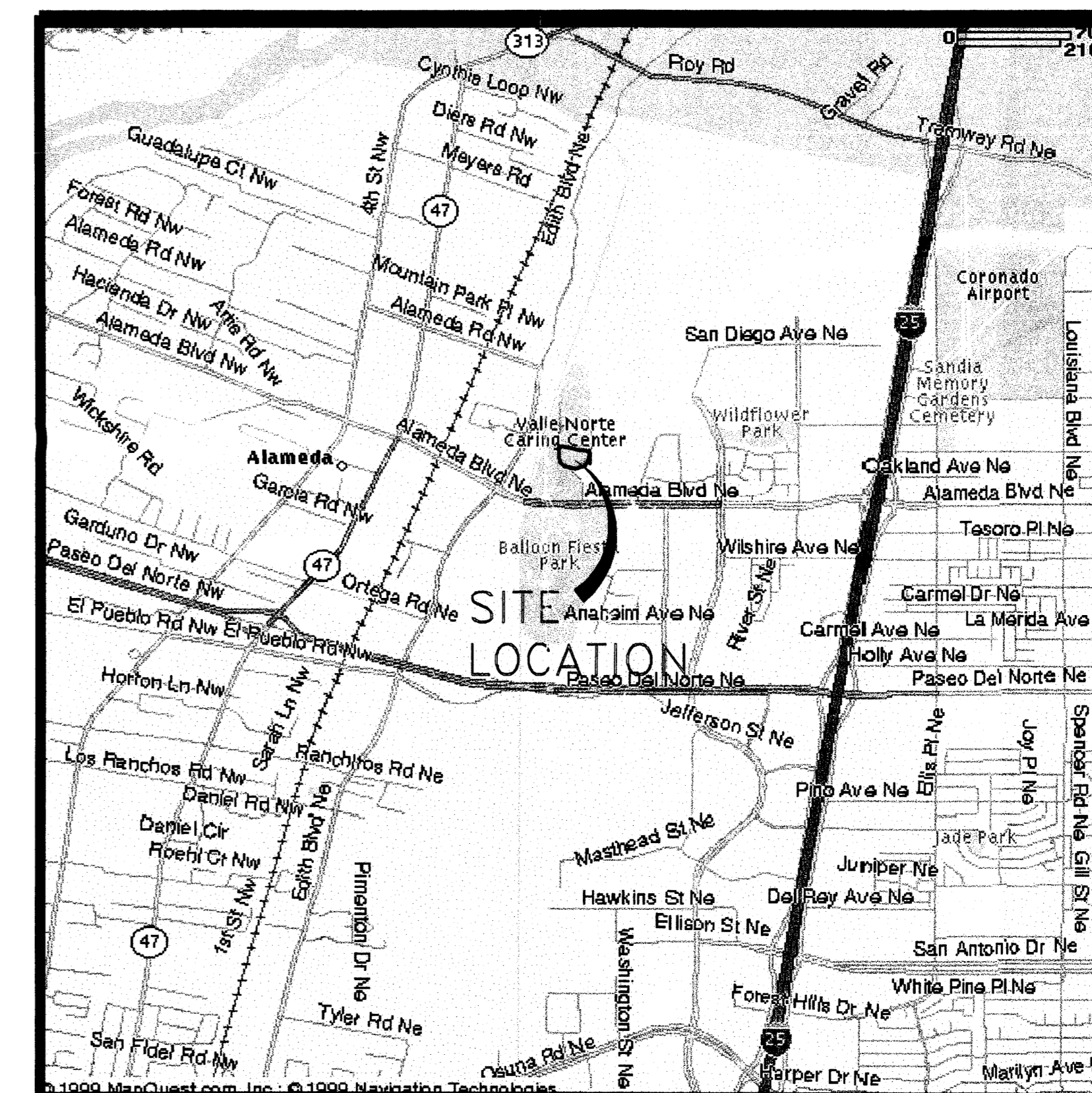
NATIONAL MUSEUM OF NUCLEAR SCIENCE AND HISTORY



SHEET INDEX

- AMENDED AND APPROVED SITE MASTER PLAN
- A-101.....SITE PLAN FOR SUBDIVISION
- A-102.....SITE PLAN FOR BUILDING PERMIT
- A-201.....EXTERIOR ELEVATION - ANDERSON-ABRUZZO INTERNATIONAL BALLOON MUSEUM
- A-202.....EXTERIOR ELEVATION - NATIONAL MUSEUM OF NUCLEAR SCIENCE AND HISTORY
- A-203.....EXTERIOR ELEVATIONS - MONUMENT SIGN/KIOSK
- C-01.....CONCEPTUAL GRADING AND DRAINAGE PLAN
- C-02.....CONCEPTUAL UTILITY PLAN
- L-1.....LANDSCAPE PLAN

VICINITY MAP



Design Collaborative Southwest, Inc.
320 Central Avenue, S.W.
Albuquerque, NM 87102
505-843-9639
dcs@dcsarchitects.com
www.dcsarchitects.com

CONSULTANTS

Architect Engineer

NOT FOR
CONSTRUCTION

THE MUSEUMS AT THE
ALBUQUERQUE
BALLOON FIESTA
PARK
ALBUQUERQUE, NEW MEXICO

MARK	DATE	DESCRIPTION
ISSUE:	DRB SUBMITTAL	
PROJECT NO:	9535	
CAD DWG FILE:	9535G-101.DWG	
DRAWN BY:	CTN	
CHECKED BY:	JDD	
DATE:	07/10/01	

SHEET TITLE
TITLE SHEET

G-001
sheet of sheets



Design Collaborative Southwest, Inc.

320 Central Avenue, S.W.

Albuquerque, NM 87102

505-843-9639

dcs@dcsarchitects.com

www.dcsarchitects.com

CONSULTANTS

Architect Engineer

NOT FOR CONSTRUCTION

THE MUSEUMS AT THE ALBUQUERQUE BALLOON FIESTA PARK ALBUQUERQUE, NEW MEXICO

GENERAL NOTES

MAX HEIGHT OF BUILDING:
- BALLOON MUSEUM = 75'-0"
- NATIONAL MUSEUM OF NUCLEAR SCIENCE & HISTORY = 40'-0"
TRACT G-1 = 545,044 S.F. = 12.47 ACRES
BUILDING S.F. = 51,750 + 15,000 = 66,750 S.F.
TRACT G-2 = 247,228 S.F. = 5.68 ACRES
BUILDING S.F. = 45,800 S.F.
TOTAL ACREAGE: 790,272 S.F. = 18 ACRES

LEGEND

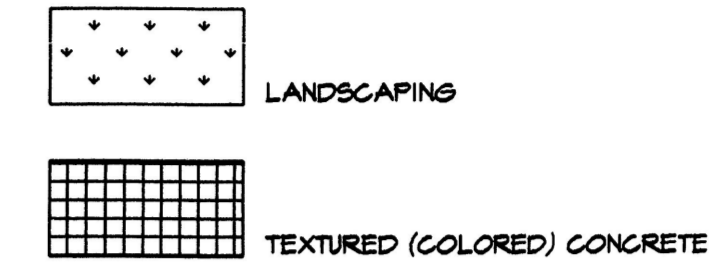
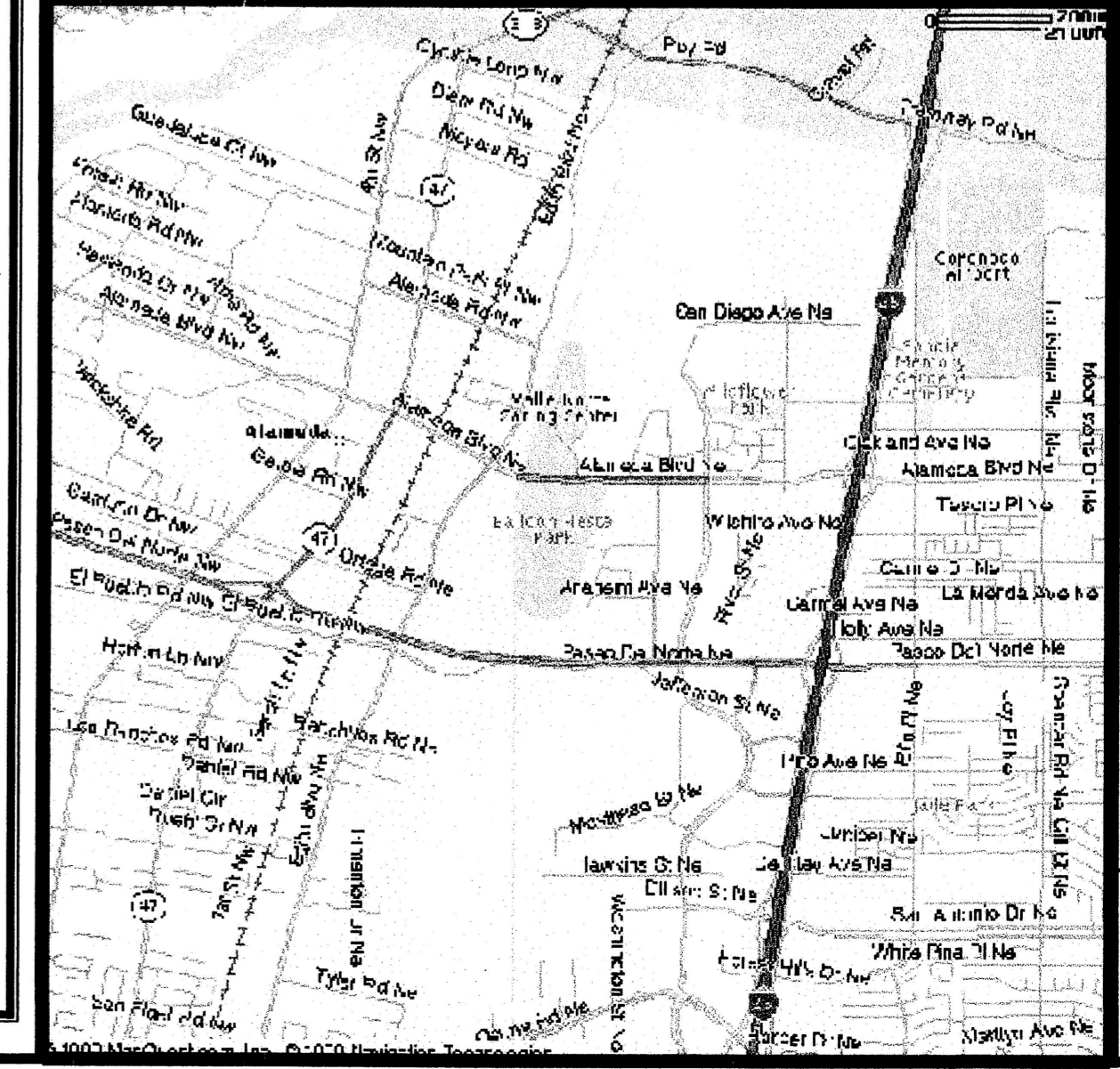


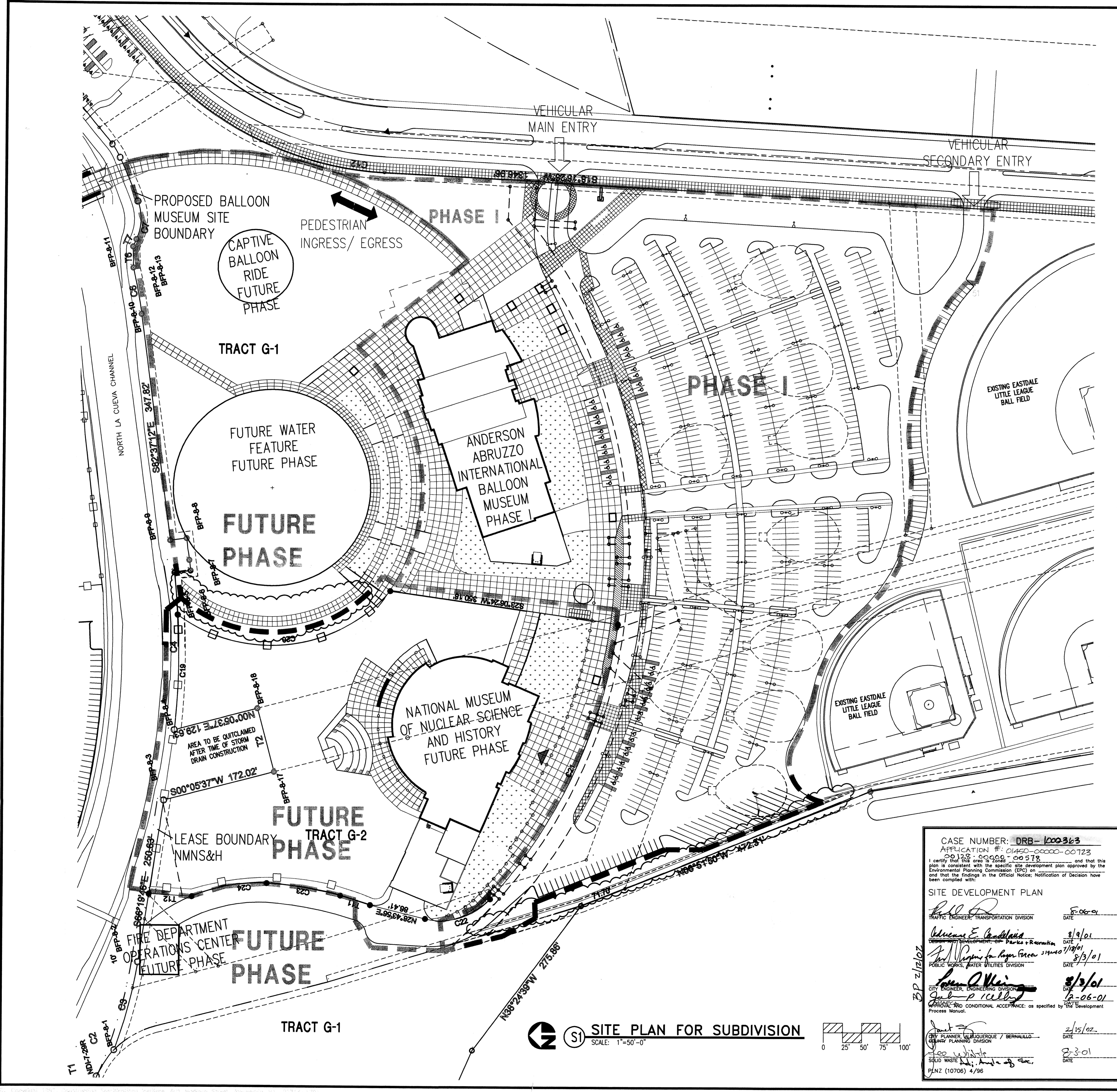
Table with columns: CURVE, ARC, RADIUS, TANGENT, CHORD, (CHORD BEARING), DELTA. Contains detailed curve data for the subdivision.

VICINITY MAP



Revision table with columns: MARK, DATE, DESCRIPTION. Includes entries for Issue, Project No, CAD file, Drawn by, Checked by, and Date.

SHEET TITLE
SITE PLAN FOR SUBDIVISION
D.R.B. SUBMITTAL



CASE NUMBER: DRB-100363
APPLICATION #: 01450-0000-00723
00125 00000 00578
I certify that this plan is consistent with the specific site development plan approved by the Environmental Planning Commission (EPC) on 1/19/01 and that the findings in the Official Notice, Notification of Decision have been complied with:
SITE DEVELOPMENT PLAN
TRAFFIC ENGINEER, TRANSPORTATION DIVISION: Bill D. ... DATE: 8/06/01
PUBLIC WORKS, WATER UTILITIES DIVISION: ... DATE: 8/3/01
CITY ENGINEER, ENGINEERING DIVISION: ... DATE: 8/3/01
PLANNER, LAND ACQUISITION / BERNALILLO COUNTY PLANNING DIVISION: ... DATE: 2/15/02
DATE: 2-3-01

SITE PLAN FOR SUBDIVISION
SCALE: 1"=50'-0"

U:\Users\p\Projects\9535 Balloon Fiesta\Drawings\0710.DRB9535A-SP.dwg, A:\01 - Site Plan For Subdivision, 07/03/2001 11:21:27 AM.
G:\msd\p\9535.dwg by TIR, ACI:ET, 30x 42, 11.

CASE NUMBER: DRB-1000363
 APPLICATION #: 01450-0000-00722

I certify that this plan is Zoned... and that this plan is consistent with the specific site development plan approved by the Environmental Planning Commission (EPC) on... and that the findings in the Official Notice, Notification of Decision have been complied with.

SITE DEVELOPMENT PLAN

Richard D. Davis
 TRAFFIC ENGINEER, TRANSPORTATION DIVISION
 DATE: 8/19/01

William E. Paulsen
 DESIGN AND DEVELOPMENT OF PARKS & RECREATION
 DATE: 8/19/01

John M. ...
 PUBLIC WORKS, WATER UTILITIES DIVISION
 DATE: 8/19/01

Sam J. ...
 CITY ENGINEER, ENGINEERING DIVISION
 DATE: 8/23/01

John ...
 APPROVAL AND CONDITIONAL ACCEPTANCE, as specified by the Development Process Manual.
 DATE: 8-3-01

CITY PLANNER, ALBUQUERQUE / BERNALILLO COUNTY PLANNING DIVISION
 DATE: 8-3-01

Ja ...
 SOLID WASTE
 DATE: 8-3-01

BLNZ (10706) 4/96



Design Collaborative Southwest, Inc.
 320 Central Avenue, S.W.
 Albuquerque, NM 87102
 505-843-9639
 dcs@dcswarchitects.com
 www.dcsarchitects.com

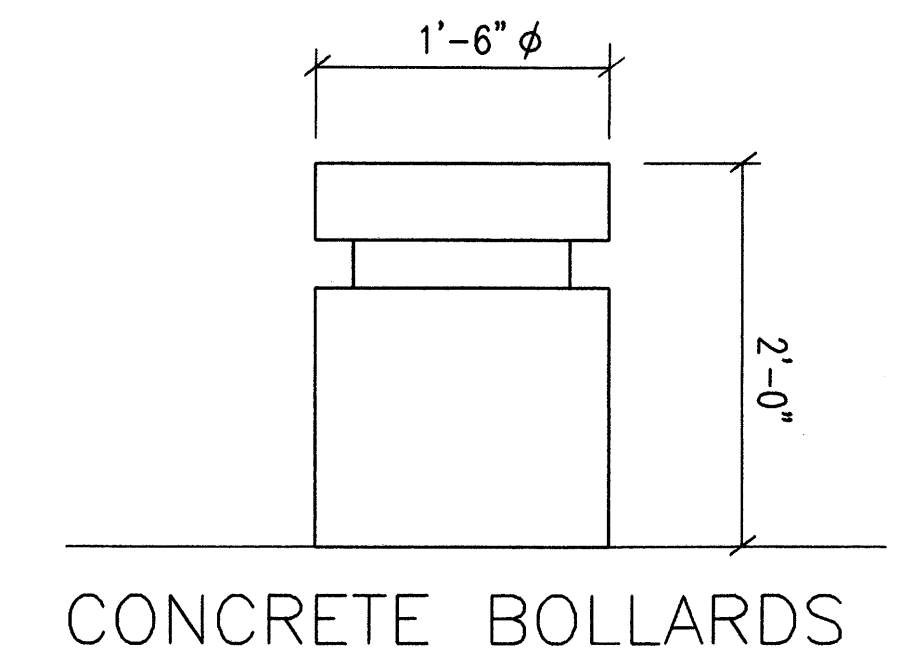
CONSULTANTS

Architect Engineer

NOT FOR CONSTRUCTION

THE MUSEUMS AT THE ALBUQUERQUE BALLOON FIESTA PARK
 ALBUQUERQUE, NEW MEXICO

NOTE: ALTERNATIVE PARKING SURFACES (TURF PAVERS) WILL BE BID AS AN ALTERNATE IN APPROXIMATELY THE SOUTHERN 1/2 OF THE PARKING LOT.



CONCRETE BOLLARDS

ACREAGE: 790,333 SF = 18 ACRES

LEGEND:

- LANDSCAPING
- TEXTURED (COLORED) CONCRETE

PARKING

831 TOTAL PROVIDED

BUSES: 17 SPACES
 H.C. REQUIRED = 2% = 17 SPACES
 PROVIDED = 37 H.C. SPACES
 INCLUDED 4 VAN ACCESSIBLE
 BIKE RACKS - 5 PROVIDED
 FOR UP TO 50 BIKES
 BIKE LOCKERS FOR 16 BIKES

TOTAL REQUIRED = 615

AFO PLANS CHECKING OFFICE
 824-3611
 APPROVED/DISAPPROVED
 SIGNATURE & DATE

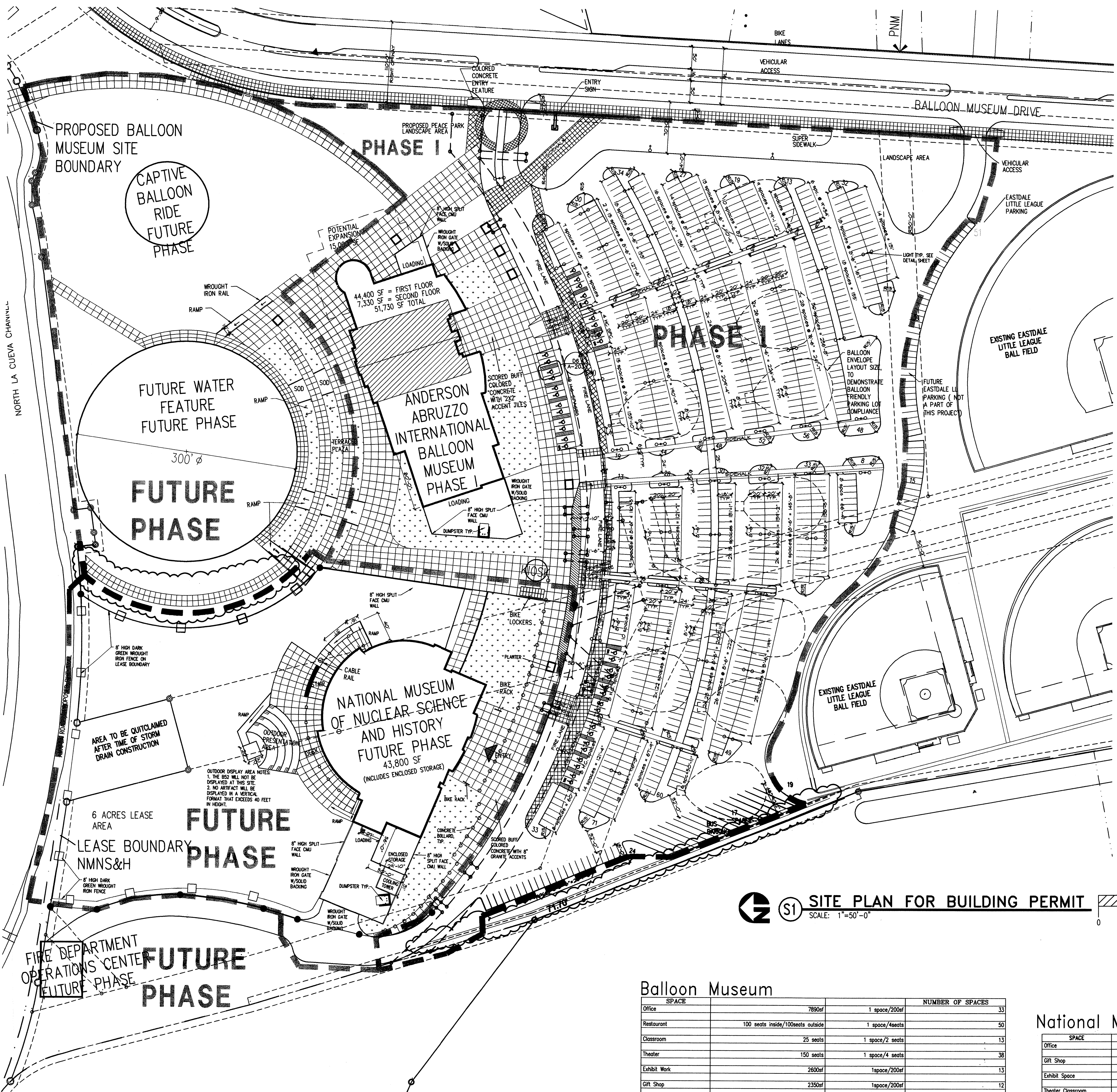
S1 SITE PLAN FOR BUILDING PERMIT
 SCALE: 1"=50'-0"

Balloon Museum

SPACE	AREA	SEATING	NUMBER OF SPACES	REQUIREMENTS
Office	7890sf		1 space/200sf	33
Restaurant	100 seats inside/100seats outside		1 space/4seats	50
Classroom	25 seats		1 space/2 seats	13
Theater	150 seats		1 space/4 seats	38
Exhibit Work	2600sf		1space/200sf	13
Gift Shop	2350sf		1space/200sf	12
Exhibit Storage	6900sf		1 space/1000sf	7
Maintenance	890sf		1 space/200sf	8
Staff Support	3150sf		1 space/200sf	16
Exhibit/Circulation	22700sf @ 50sf/person	450@ 1space/3 people		151
			Required	347
			Provided	347

National Museum of Nuclear Science and History

SPACE	AREA	SEATING	NUMBER OF SPACES	REQUIREMENTS
Office	7800sf		1 space/200sf	38
Gift Shop	2200sf		1 space/200sf	11
Exhibit Space	5200sf		1 space/1000sf	5
Theater Classroom	120 seats		1 space/4 people	30
Library	1000sf	1 person/50sf = 20	1 space/4seats	13
Exhibit/Circulation	26800sf @ 50sf/person	536 people	1 space/3 people	179
			Required	268
			Provided	280



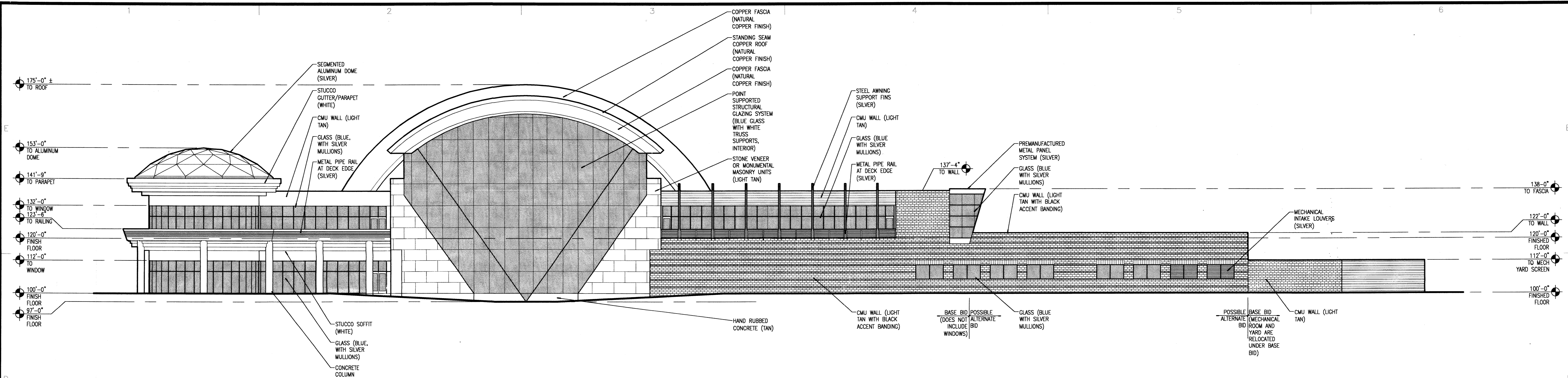
I:\Projects\93536 Balloon Park\Drawings\010710-DRB\93536-SP-Avg. A-102 - Site Plan For Building Permit.dwg, 07/10/01 11:11:33 AM
 Chris, HP Designer 1050C by HP, Acad, E1, 30 x 42 in, 1:1

CONSULTANTS

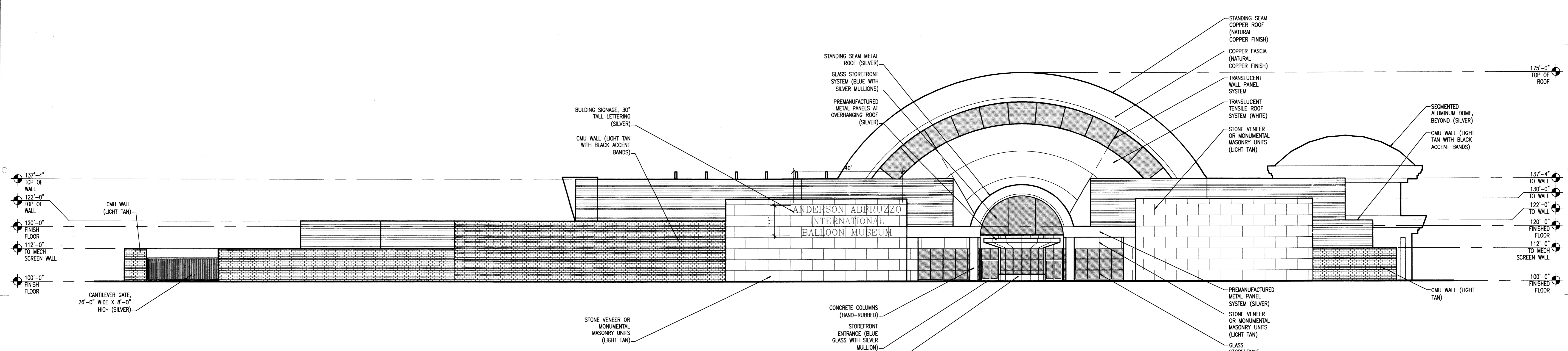
Architect Engineer

NOT FOR CONSTRUCTION

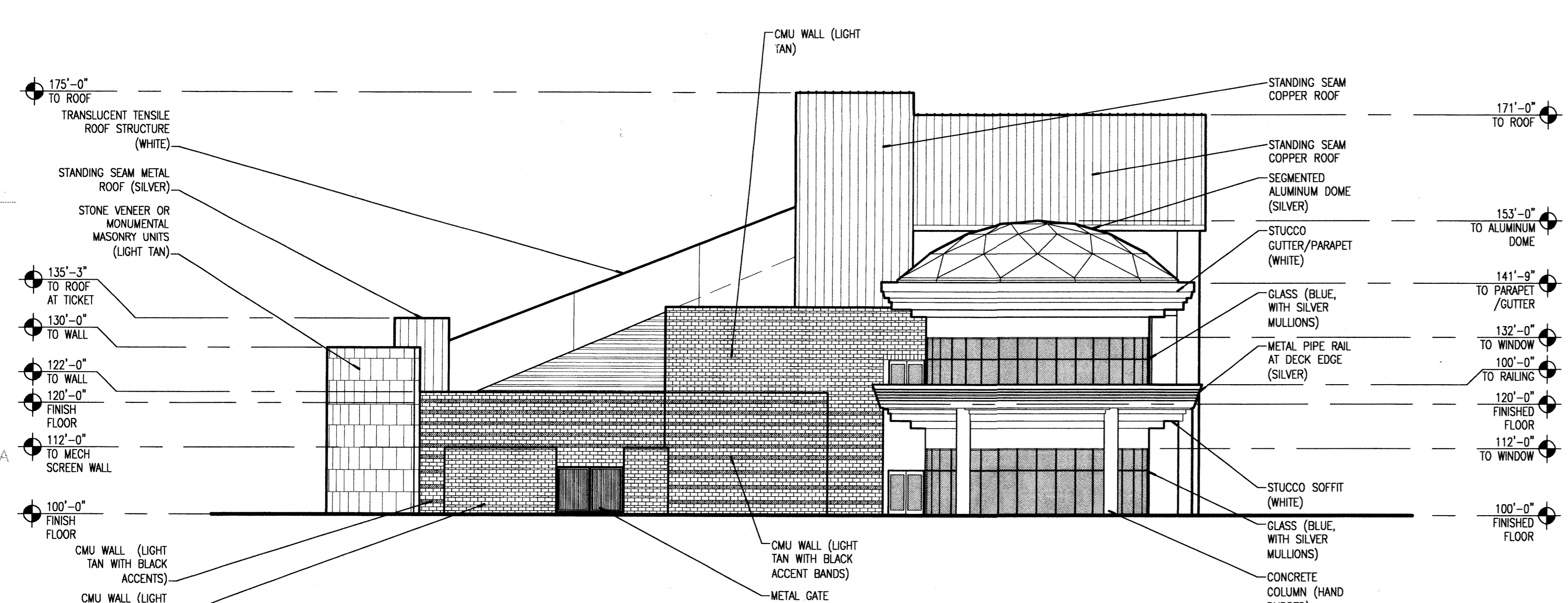
Albuquerque Balloon Museum
Albuquerque, NM



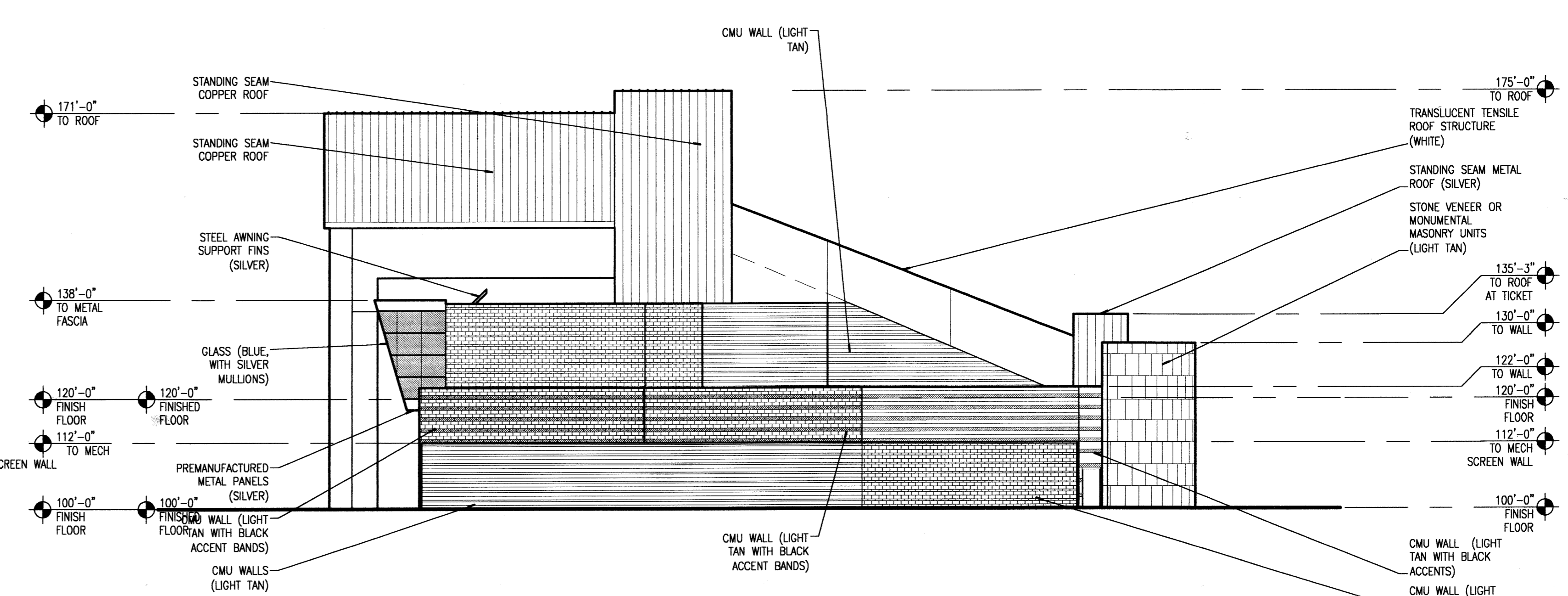
D1 EXTERIOR ELEVATION - NORTH
1/16" = 1'-0"



B1 EXTERIOR ELEVATION - SOUTH
1/16" = 1'-0"



A1 EXTERIOR ELEVATION - EAST
1/16" = 1'-0"



C1 EXTERIOR ELEVATION - WEST
1/16" = 1'-0"

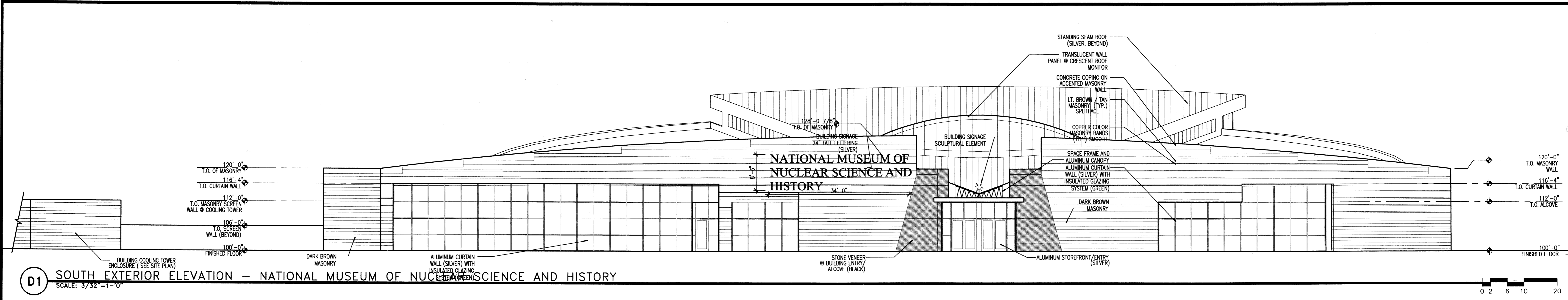
MARK	DATE	DESCRIPTION
ISSUE:		DRB SUBMITTAL
PROJECT NO:		9736
CAD DWG FILE:		9736A-201dwg
DRAWN BY:		DCSW
CHECKED BY:		JDD
DATE:		05/22/01

SHEET TITLE
ANDERSON-ABRUZZO INTERNATIONAL BALLOON MUSEUM - EXTERIOR ELEVATIONS

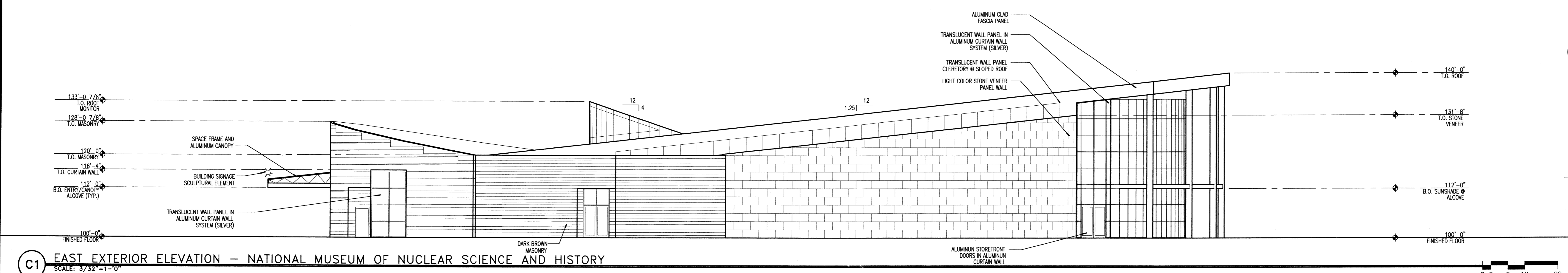
U:\external\Projects\9736 Albuquerque Museum\Drawings\9736A-201.dwg, Layout1, 05/22/2001 10:02:39 AM, C:\msdplib\97\acadiso2000.ctb, ARCH E1 (3/30/01 4:50:00 PM), 1:1

NOT FOR CONSTRUCTION

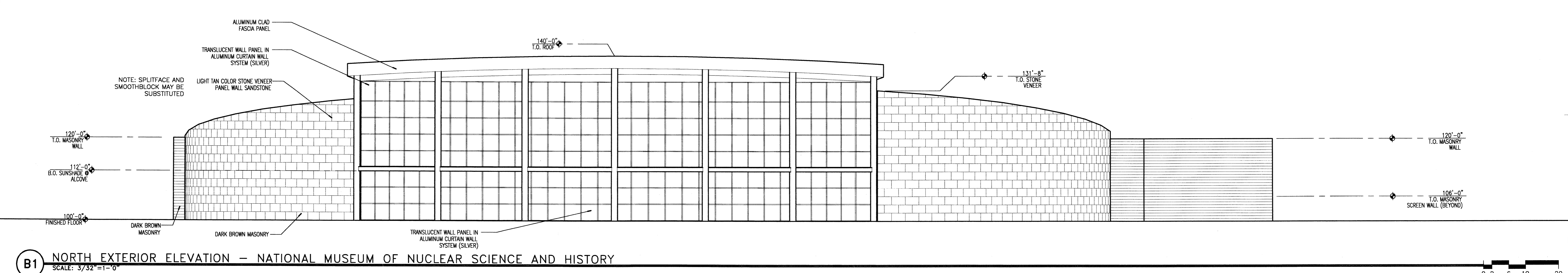
THE MUSEUMS AT THE ALBUQUERQUE BALLOON FIESTA PARK
ALBUQUERQUE, NEW MEXICO



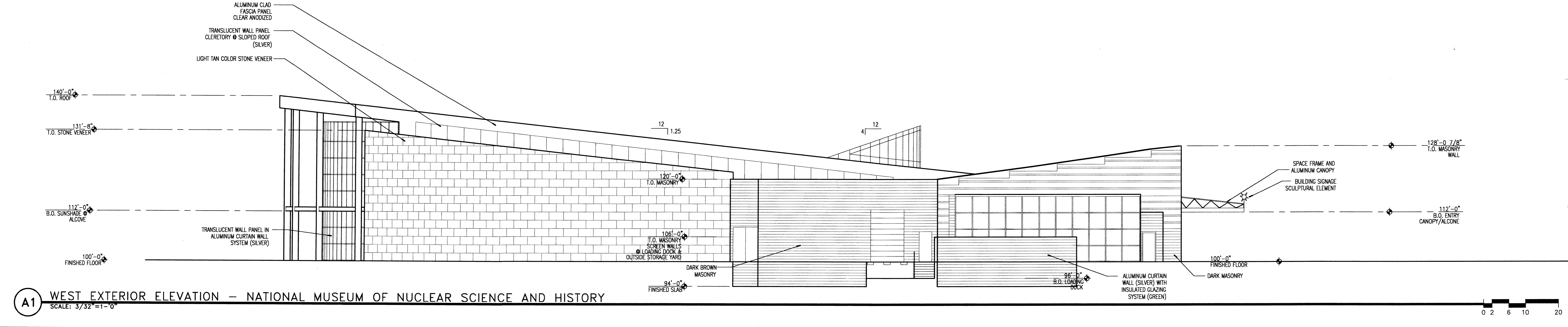
D1 SOUTH EXTERIOR ELEVATION - NATIONAL MUSEUM OF NUCLEAR SCIENCE AND HISTORY
SCALE: 3/32" = 1'-0"



C1 EAST EXTERIOR ELEVATION - NATIONAL MUSEUM OF NUCLEAR SCIENCE AND HISTORY
SCALE: 3/32" = 1'-0"



B1 NORTH EXTERIOR ELEVATION - NATIONAL MUSEUM OF NUCLEAR SCIENCE AND HISTORY
SCALE: 3/32" = 1'-0"



A1 WEST EXTERIOR ELEVATION - NATIONAL MUSEUM OF NUCLEAR SCIENCE AND HISTORY
SCALE: 3/32" = 1'-0"

W:\museums\projects\9729\National Atomic Museum Drawings\010004-D1B1B2B3A-202.dwg, Layout1, 05/22/2001 09:51:29 AM, C:\msdplib\1997\acadiso2.dwg, User: JDD, Plot: 11 (100% x 4.00 inches), 1:1

MARK	DATE	DESCRIPTION
ISSUE:	D.R.B. SUBMITTAL	
PROJECT NO:	9729	
CAD DWG FILE:	9729A-202.DWG	
DRAWN BY:	CTN	
CHECKED BY:	JDD	
DATE:	05/22/01	

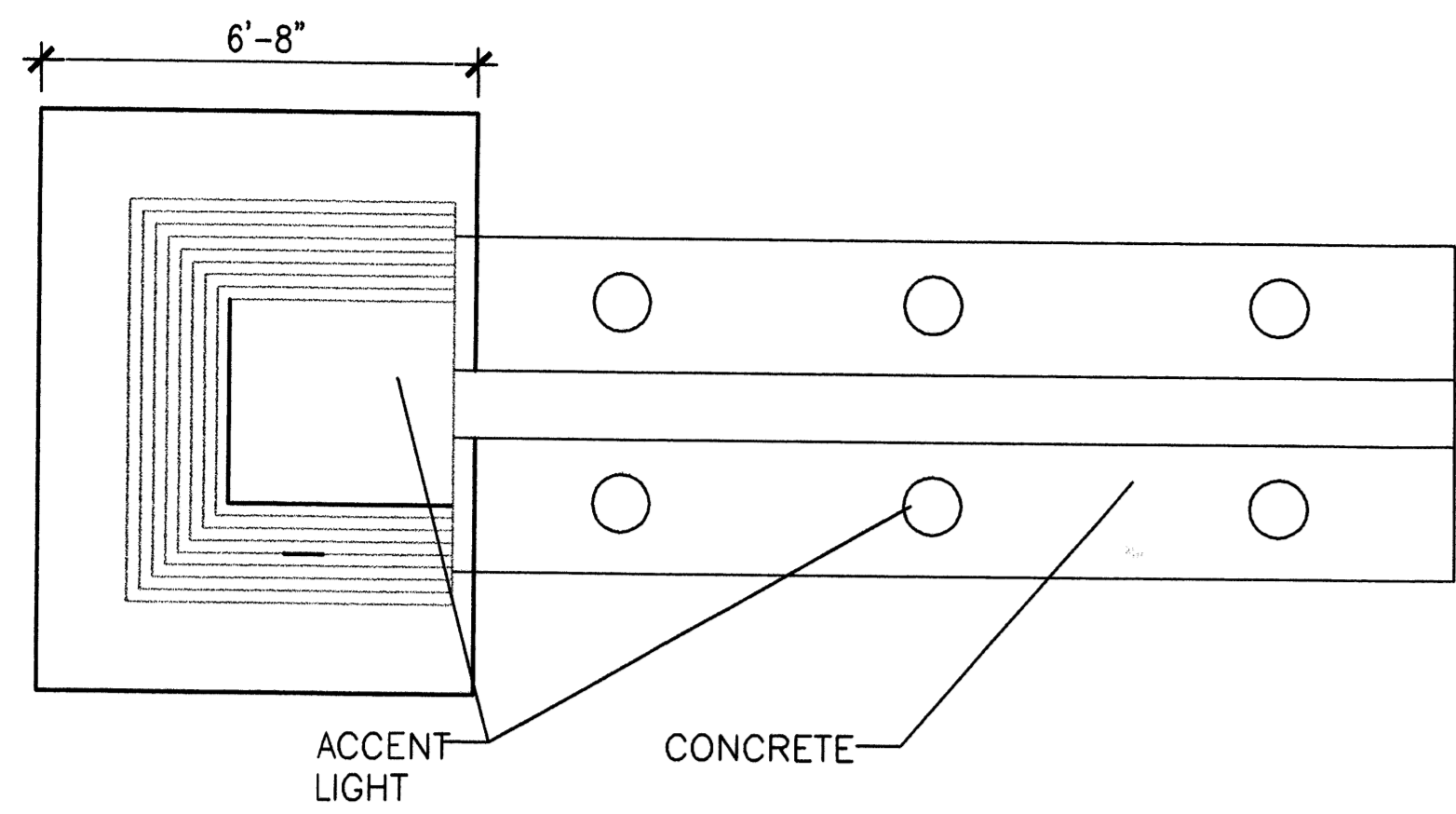
SHEET TITLE
EXTERIOR ELEVATIONS
NATIONAL MUSEUM OF
NUCLEAR SCIENCE
AND HISTORY

CONSULTANTS

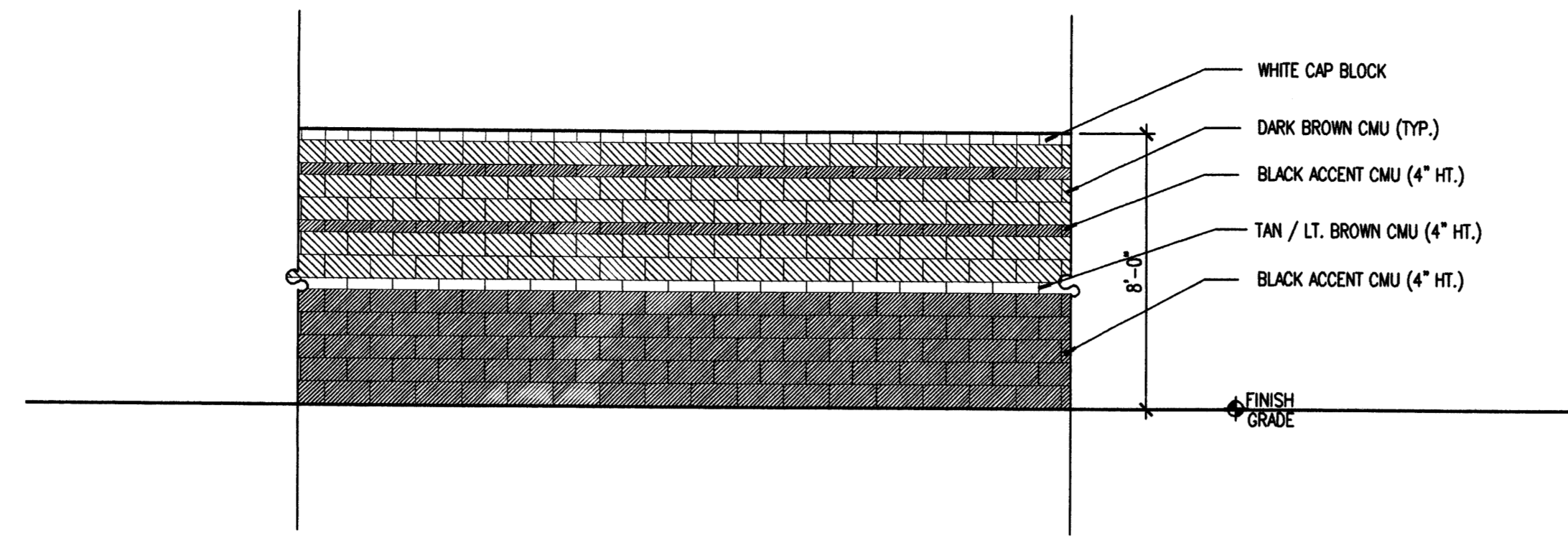
Architect Engineer

NOT FOR CONSTRUCTION

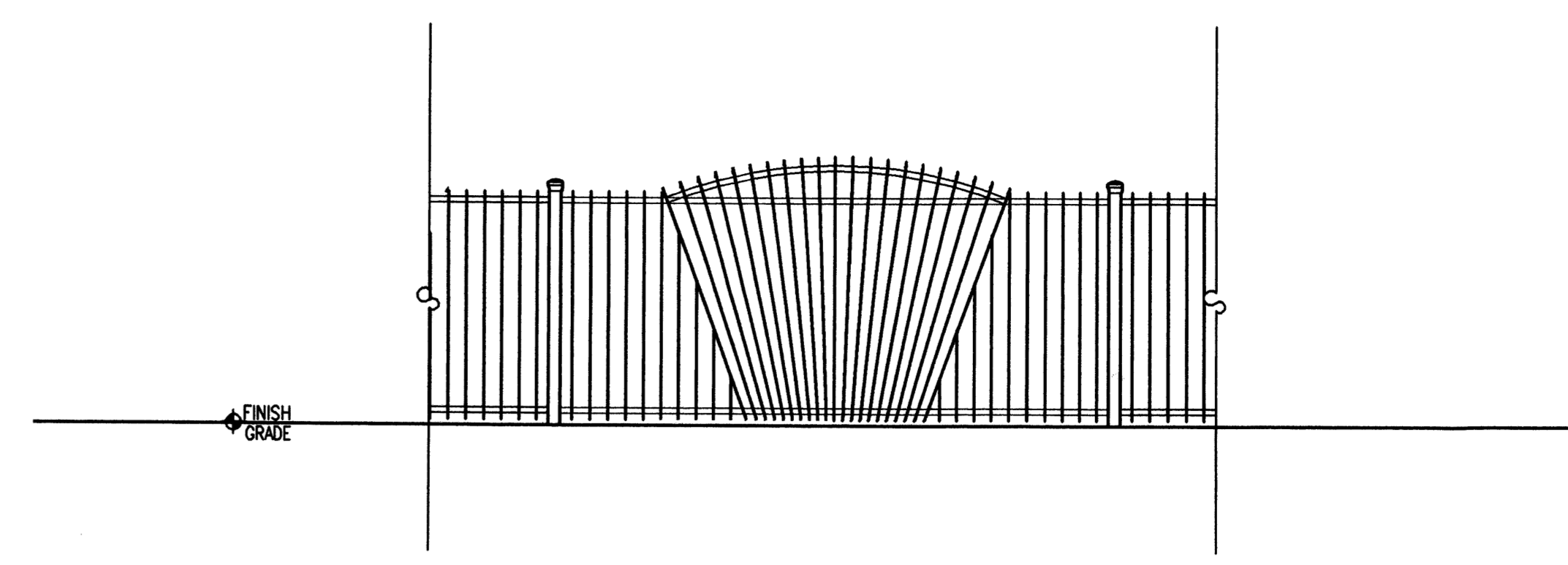
THE MUSEUMS AT THE
ALBUQUERQUE
BALLOON FIESTA
PARK
ALBUQUERQUE, NEW MEXICO



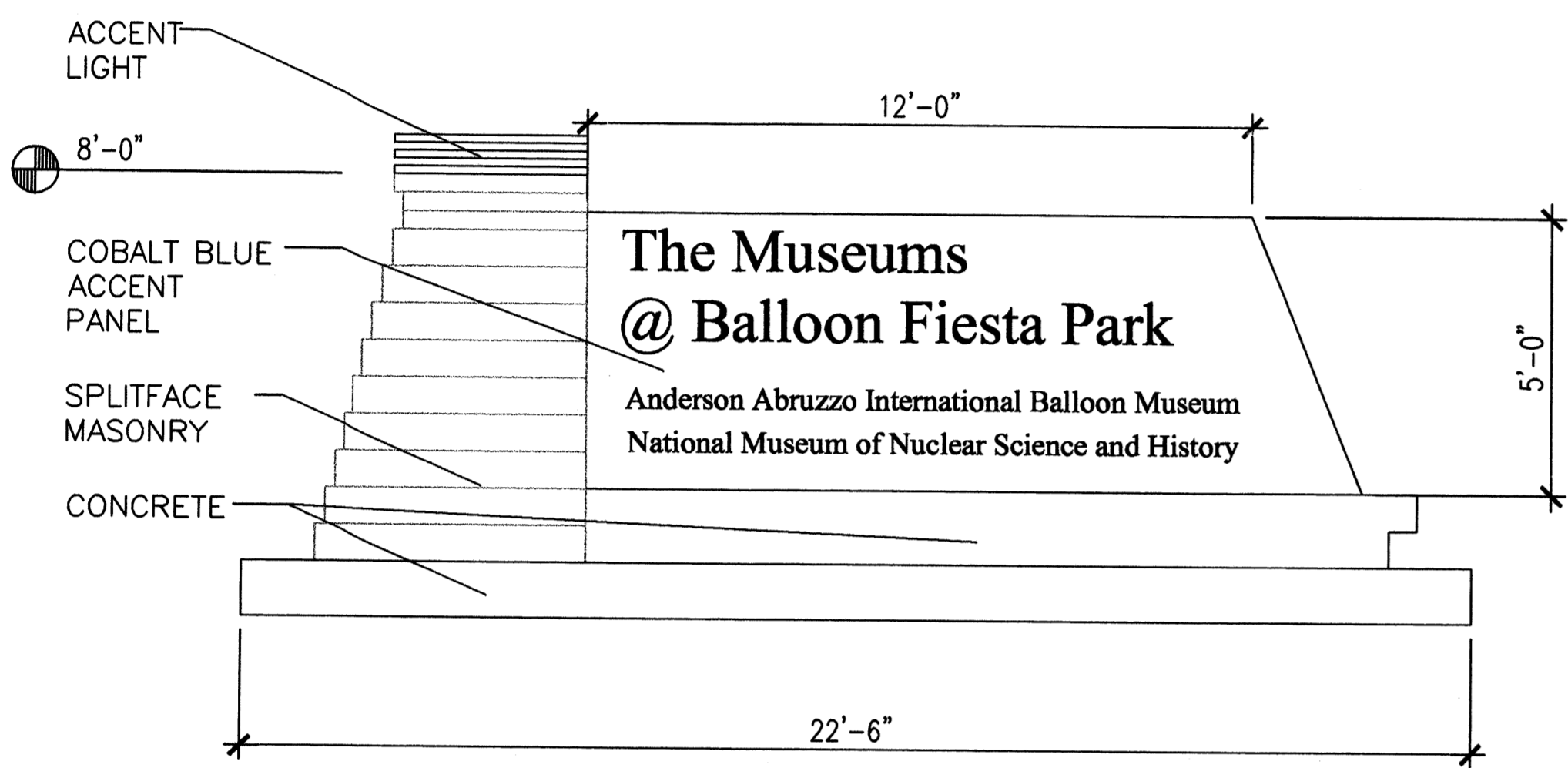
E1 PLAN @ MONUMENT SIGN
SCALE: 3/8"=1'-0"



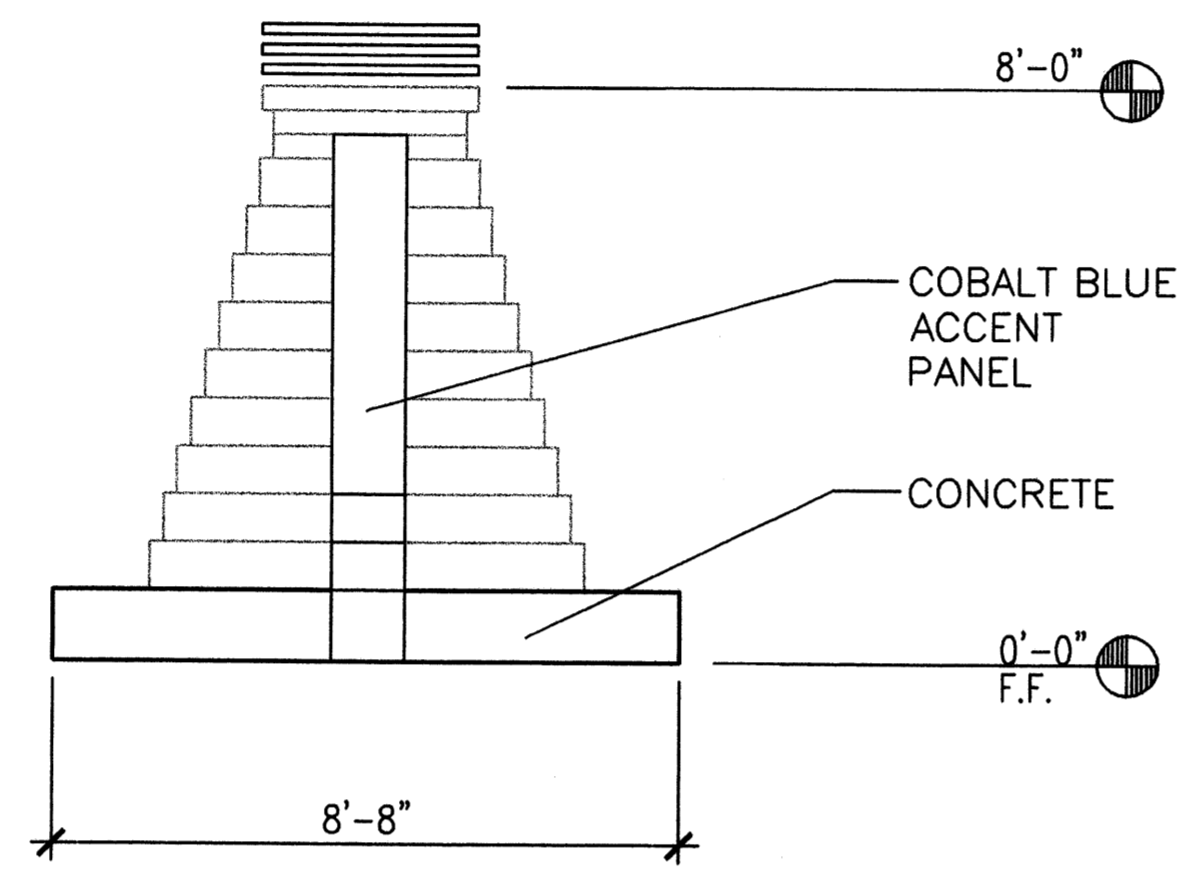
E3 ELEVATION @ SPLIT-FACED CMU WALL
SCALE: 1/4"=1'-0"



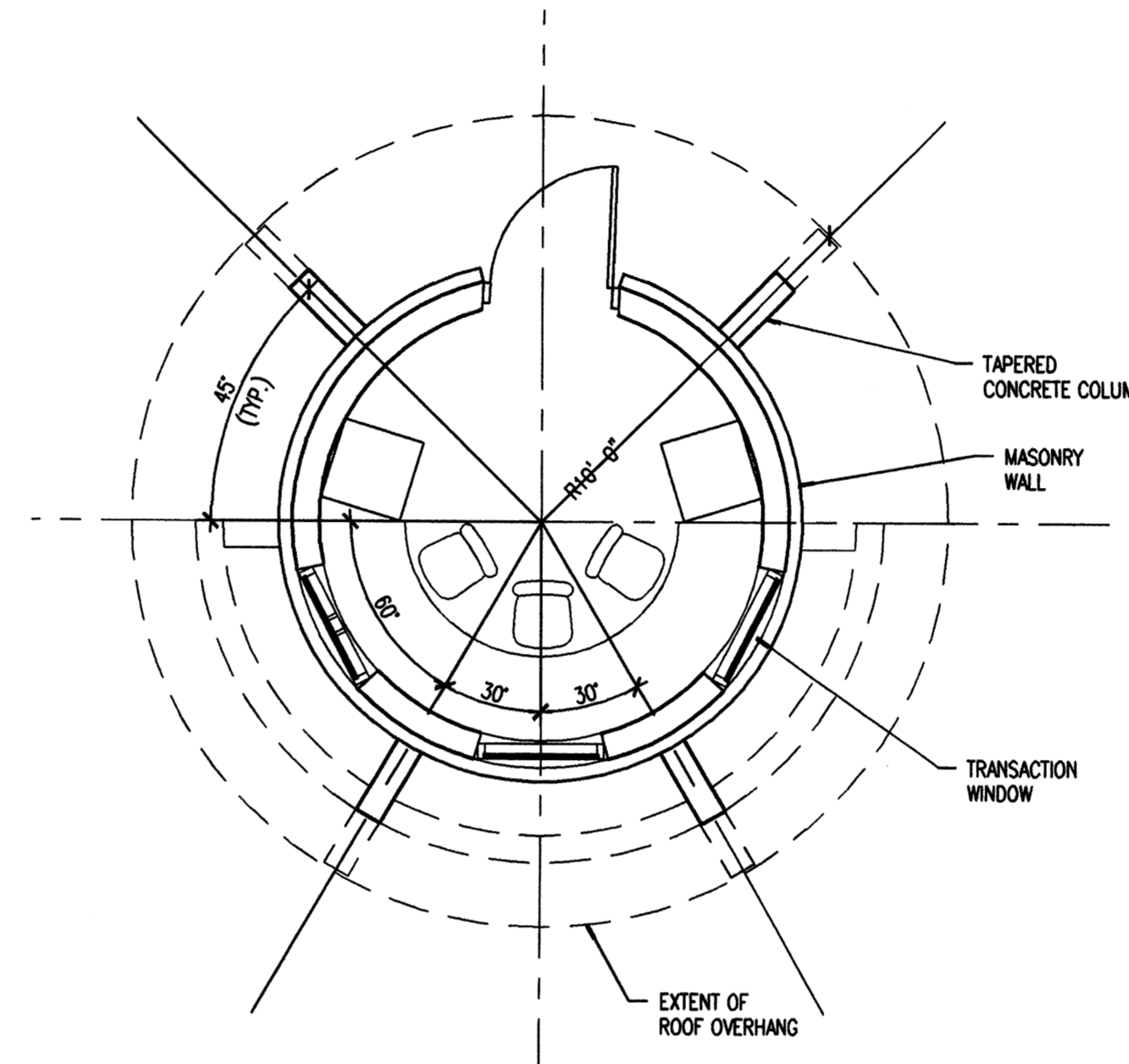
D5 ELEVATION @ WROUGHT IRON FENCE ACCENT PANEL
SCALE: 1/4"=1'-0"



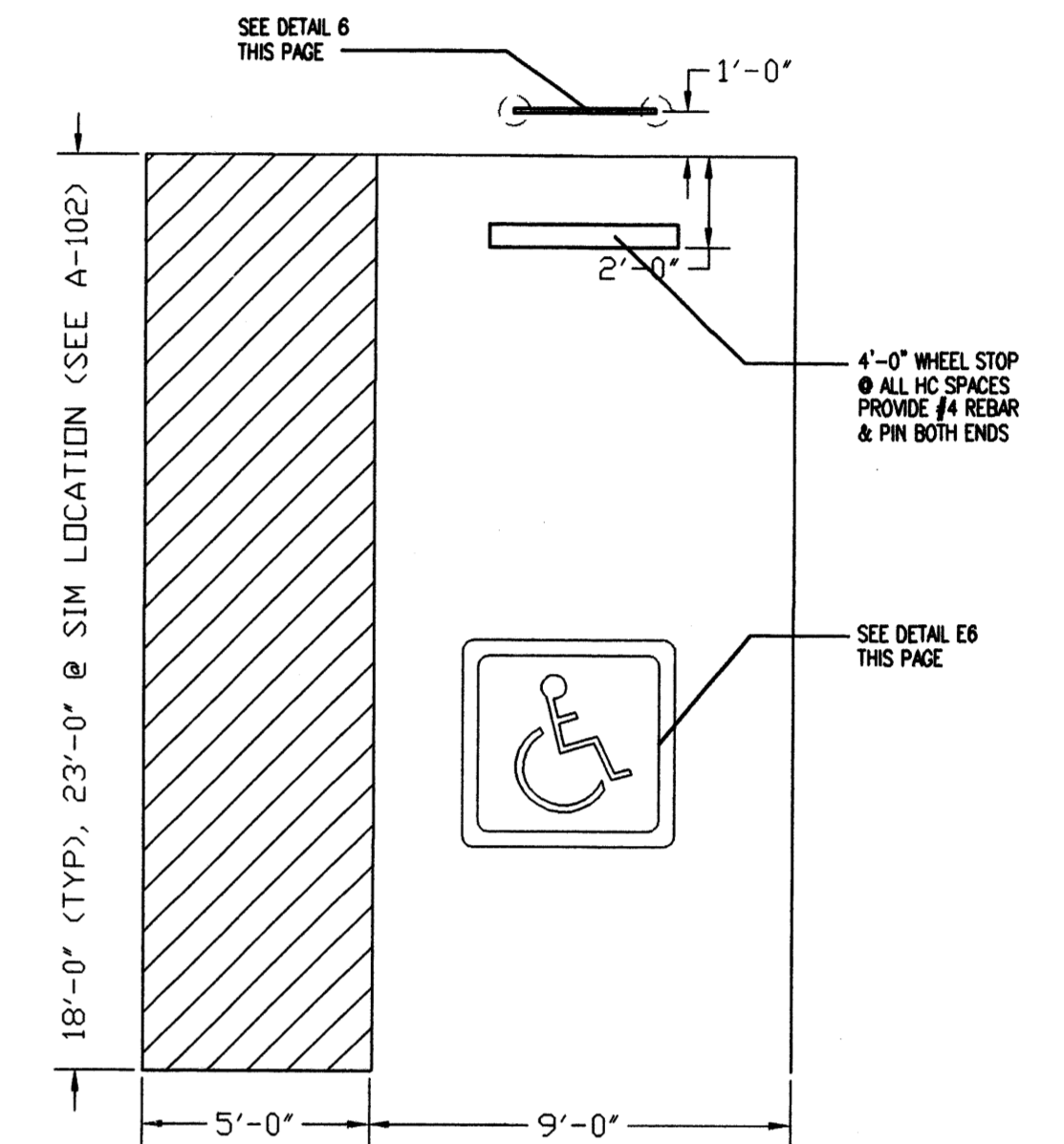
C1 MAIN ELEVATION @ MONUMENT SIGN
SCALE: 3/8"=1'-0"



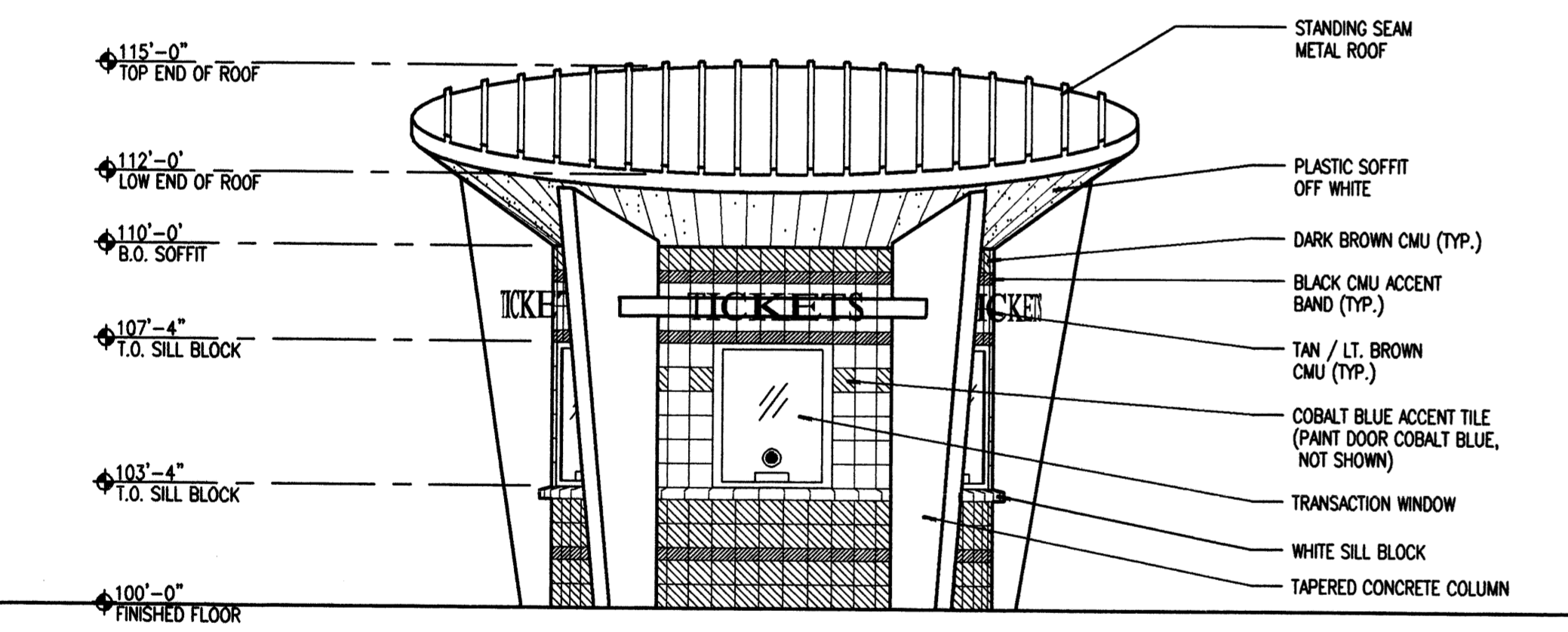
C3 SIDE ELEVATION @ MON. SIGN
SCALE: 3/8"=1'-0"



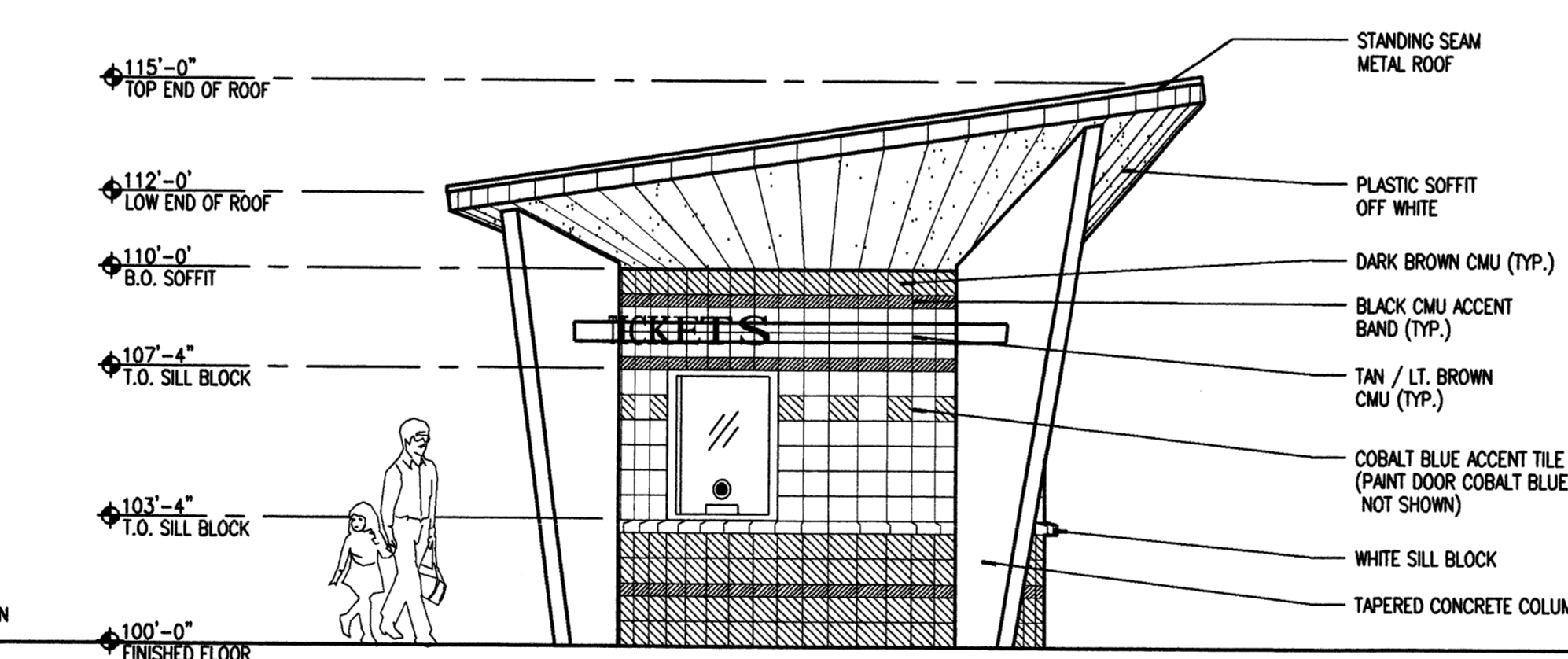
C4 PLAN @ KIOSK
SCALE: 1/4"=1'-0"



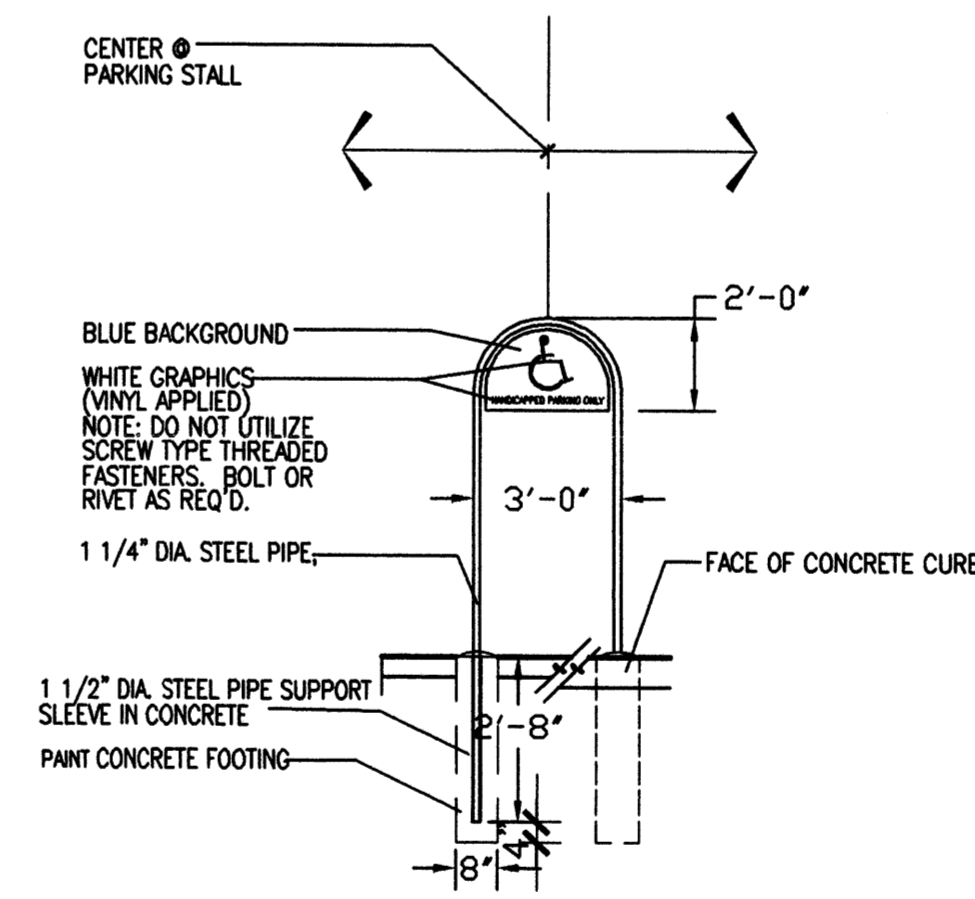
D6 H.C. PARKING STALL
SCALE: 1/8"=1'-0"



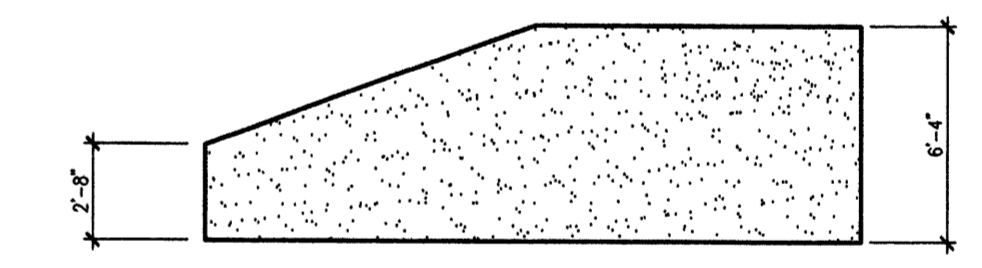
A1 FRONT ELEVATION @ KIOSK
SCALE: 1/4"=1'-0"



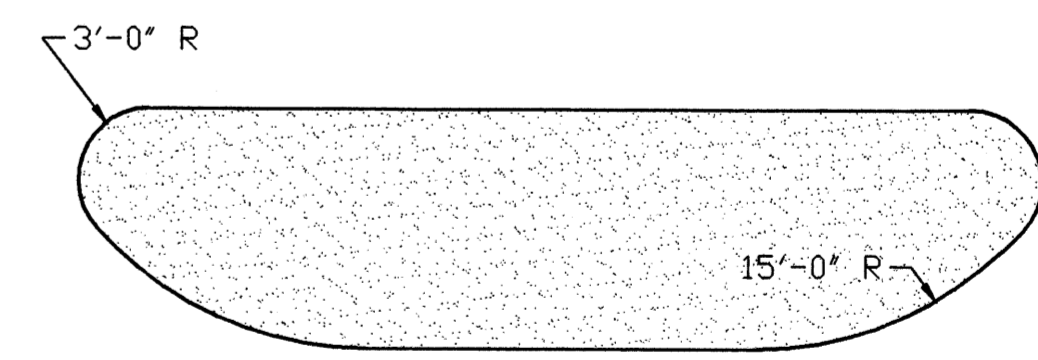
A3 SIDE ELEVATION @ KIOSK
SCALE: 1/4"=1'-0"



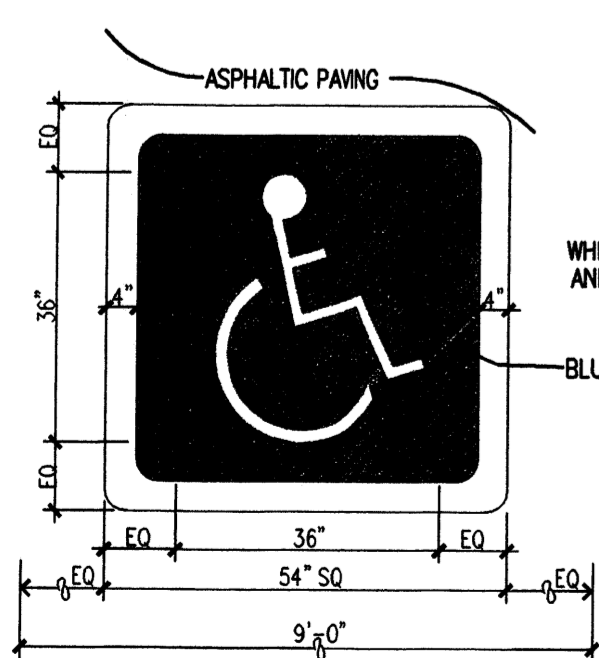
E5 H.C. PARKING SIGN
SCALE: 1/8"=1'-0"



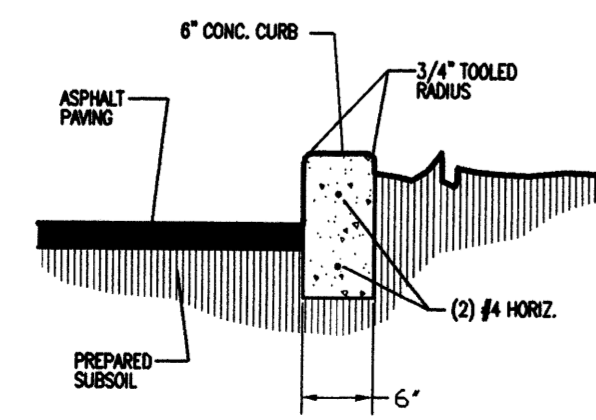
C6 DUMPSTER ELEVATION
SCALE: 3/16"=1'-0"



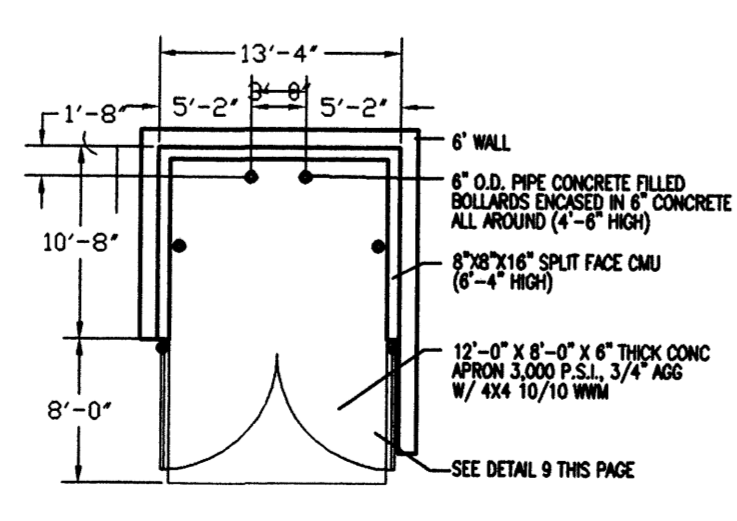
C5 ISLAND TYPICAL
SCALE: 3/16"=1'-0"



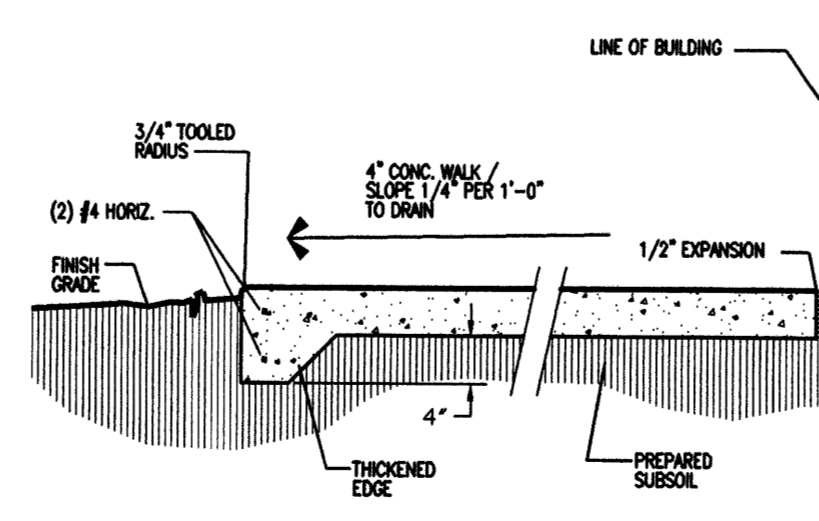
E6 H.C. PAVING SIGN
SCALE: 3/32"=1'-0"



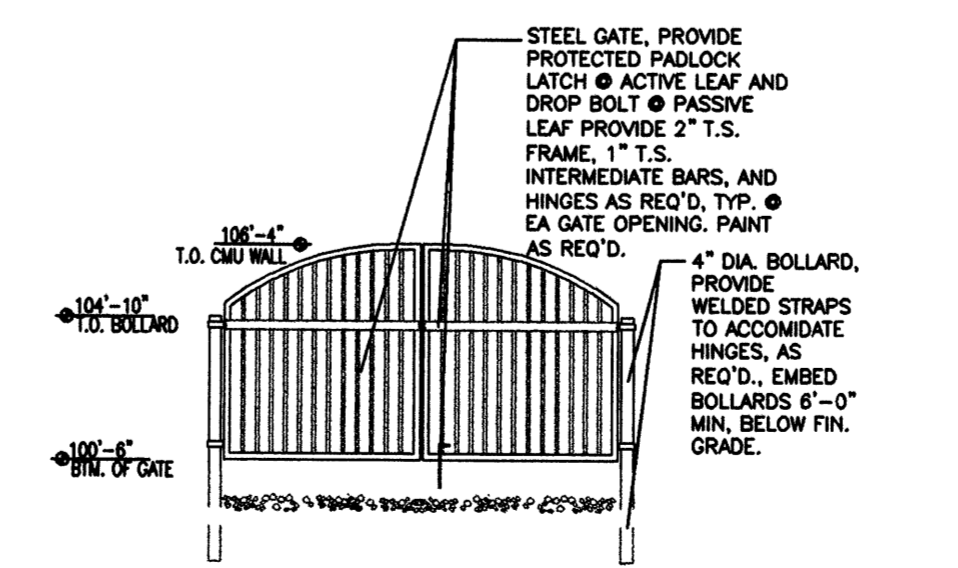
B5 CURB DETAIL
SCALE: 3/32"=1'-0"



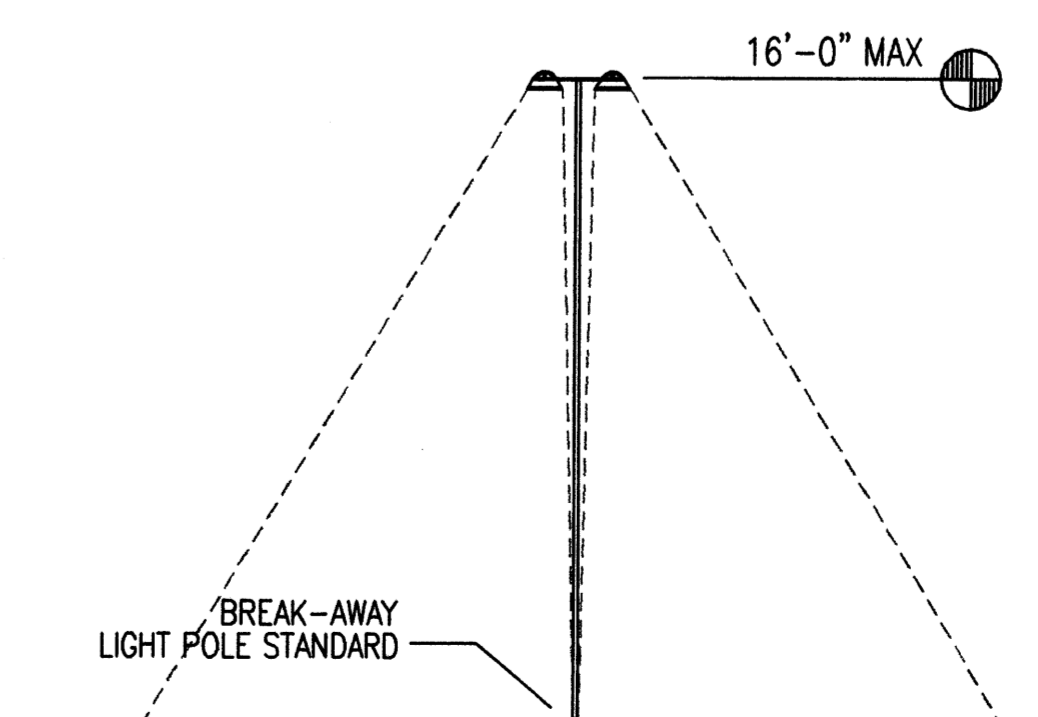
B6 REFUSE ENCLOSURE
SCALE: 3/32"=1'-0"



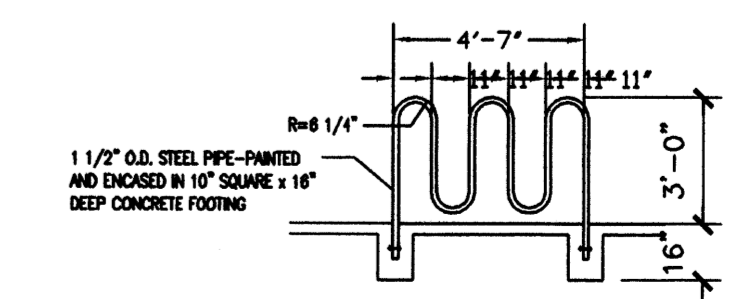
A5 SIDEWALK DETAIL
SCALE: 3/32"=1'-0"



A6 ELEVATION @ DUMPSTER
SCALE: 1/8"=1'-0"



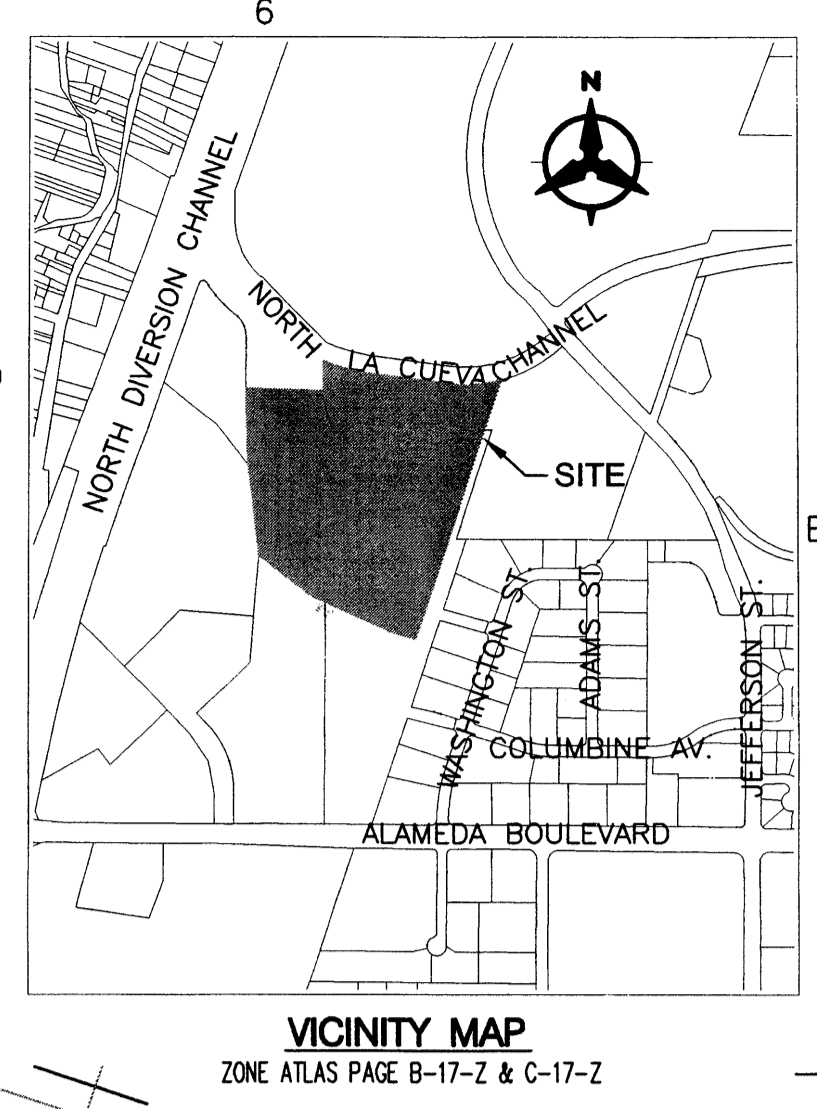
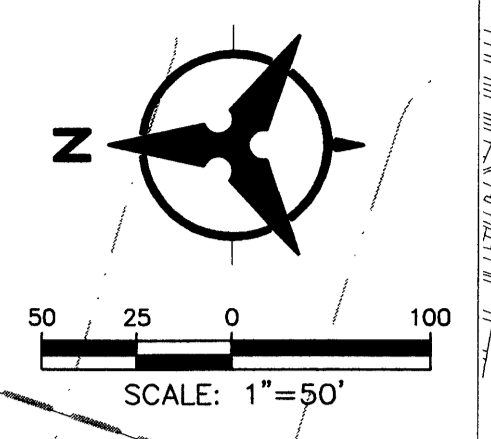
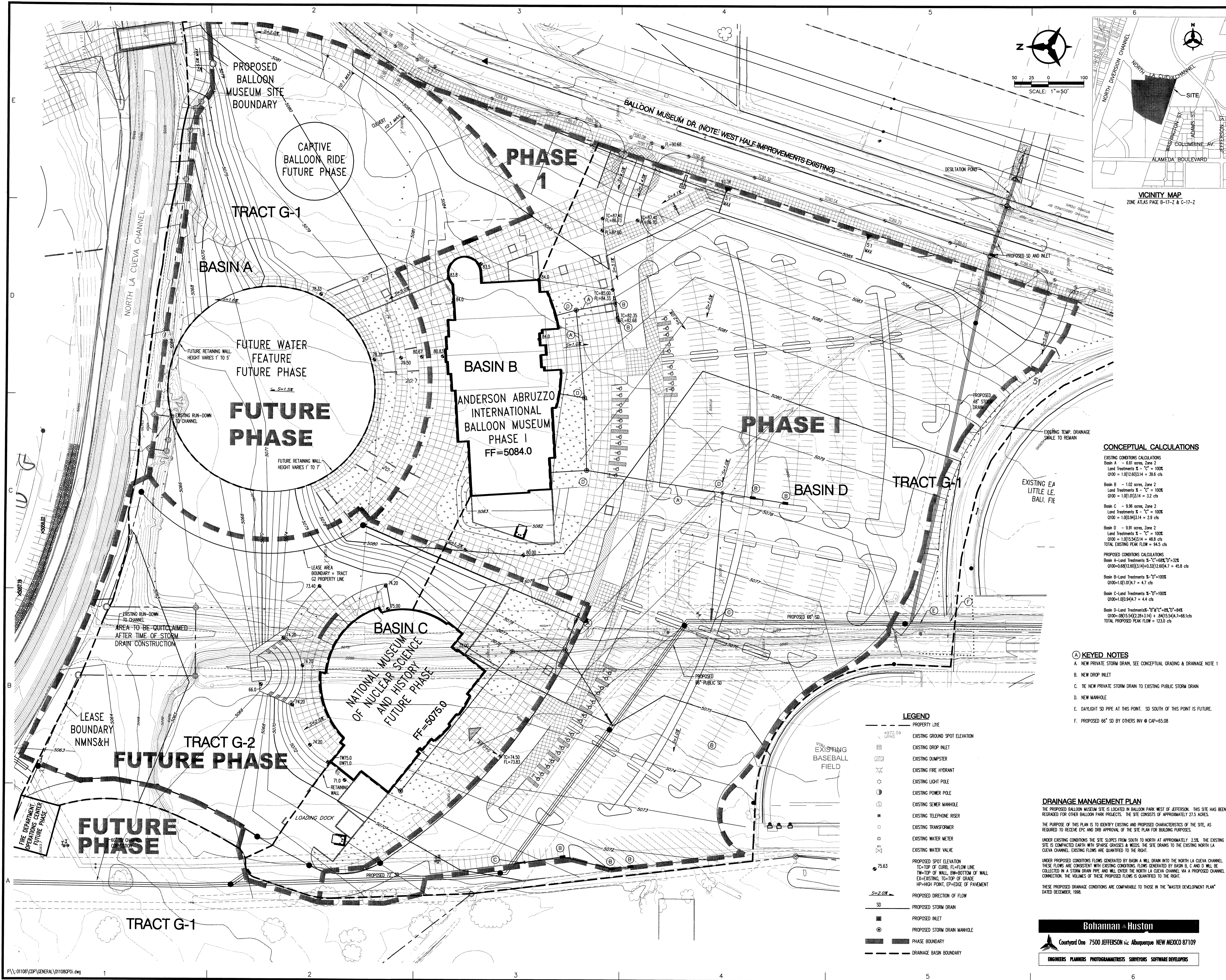
A4 LIGHT STANDARD
SCALE: 1/8"=1'-0"



D5 BIKE RACK
SCALE: 1/8"=1'-0"

MARK	DATE	DESCRIPTION
ISSUE:		DRB SUBMITTAL
PROJECT NO:		9535
CAD DWG FILE:		9535A-203.DWG
DRAWN BY:		CTN
CHECKED BY:		JDD
DATE:		07/10/01

SHEET TITLE
MONUMENT SIGN/KIOSK
PLAN & ELEVATIONS



Design Collaborative Southwest, Inc.
 320 Central Avenue, S.W.
 Albuquerque, NM 87102
 505-843-9639
 dcs@dcsarchitects.com
 www.dcsarchitects.com

CONSULTANTS
 Architect Engineer

THE MUSEUMS AT ALBUQUERQUE BALLOON FIESTA PARK
 ALBUQUERQUE, NEW MEXICO

CONCEPTUAL CALCULATIONS

EXISTING CONDITIONS CALCULATIONS
 Basin A - 0.81 acres, Zone 2
 Land Treatments S-C = 100%
 Q100 = 1.0(0.81)(3.14) = 3.2 cfs
 Basin B - 1.02 acres, Zone 2
 Land Treatments S-C = 100%
 Q100 = 1.0(1.02)(3.14) = 3.2 cfs
 Basin C - 9.96 acres, Zone 2
 Land Treatments S-C = 100%
 Q100 = 1.0(9.96)(3.14) = 2.9 cfs
 Basin D - 9.91 acres, Zone 2
 Land Treatments S-C = 100%
 Q100 = 1.0(9.91)(3.14) = 4.8 cfs
 TOTAL EXISTING PEAK FLOW = 94.5 cfs
 PROPOSED CONDITIONS CALCULATIONS
 Basin A-Land Treatments S-C=68%, D=32%
 Q100=0.68(0.81)(3.14)+0.32(2.60)(4.7) = 45.8 cfs
 Basin B-Land Treatments S-C=100%
 Q100=1.0(1.02)(3.14) = 4.7 cfs
 Basin C-Land Treatments S-C=100%
 Q100=1.0(9.96)(3.14) = 4.4 cfs
 Basin D-Land Treatments S-C=68%, D=32%
 Q100=0.68(9.91)(3.14)+0.32(15.54)(4.7)=68.1cfs
 TOTAL PROPOSED PEAK FLOW = 123.0 cfs

KEYED NOTES

- A. NEW PRIVATE STORM DRAIN, SEE CONCEPTUAL GRADING & DRAINAGE NOTE 1
- B. NEW DROP INLET
- C. THE NEW PRIVATE STORM DRAIN TO EXISTING PUBLIC STORM DRAIN
- D. NEW MANHOLE
- E. DAYLIGHT SD PIPE AT THIS POINT. SD SOUTH OF THIS POINT IS FUTURE.
- F. PROPOSED 66" SD BY OTHERS INV @ CAP=65.08

- LEGEND**
- PROPERTY LINE
 - EXISTING GROUND SPOT ELEVATION
 - EXISTING DROP INLET
 - EXISTING DUMPSTER
 - EXISTING FIRE HYDRANT
 - EXISTING LIGHT POLE
 - EXISTING POWER POLE
 - EXISTING SEMI MANHOLE
 - EXISTING TELEPHONE RISER
 - EXISTING TRANSFORMER
 - EXISTING WATER METER
 - EXISTING WATER VALVE
 - PROPOSED SPOT ELEVATION
 - TC=TOP OF CURB, FL=FLOW LINE
 - TW=TOP OF WALL, BW=BOTTOM OF WALL
 - EX=EXISTING, TO=TOP OF GRADE
 - HP=HIGH POINT, EP=EDGE OF PAVEMENT
 - PROPOSED DIRECTION OF FLOW
 - SD=PROPOSED STORM DRAIN
 - PROPOSED INLET
 - PROPOSED STORM DRAIN MANHOLE
 - PHASE BOUNDARY
 - DRAINAGE BASIN BOUNDARY

DRAINAGE MANAGEMENT PLAN

THE PROPOSED BALLOON MUSEUM SITE IS LOCATED IN BALLOON PARK WEST OF JEFFERSON. THIS SITE HAS BEEN REGRADDED FOR OTHER BALLOON PARK PROJECTS. THE SITE CONSISTS OF APPROXIMATELY 27.5 ACRES.
 THE PURPOSE OF THIS PLAN IS TO IDENTIFY EXISTING AND PROPOSED CHARACTERISTICS OF THE SITE, AS REQUIRED TO RECEIVE EPC AND DRB APPROVAL OF THE SITE PLAN FOR BUILDING PURPOSES.
 UNDER EXISTING CONDITIONS THE SITE SLOPES FROM SOUTH TO NORTH AT APPROXIMATELY 2.5%. THE EXISTING SITE IS COMPACTED EARTH WITH SPARSE GRASSES & WEEDS. THE SITE DRAINS TO THE EXISTING NORTH LA CUEVA CHANNEL. EXISTING FLOWS ARE QUANTIFIED TO THE RIGHT.
 UNDER PROPOSED CONDITIONS FLOWS GENERATED BY BASIN A WILL DRAIN INTO THE NORTH LA CUEVA CHANNEL. THESE FLOWS ARE CONSISTENT WITH EXISTING CONDITIONS. FLOWS GENERATED BY BASIN B, C, AND D WILL BE COLLECTED IN A STORM DRAIN PIPE AND WILL ENTER THE NORTH LA CUEVA CHANNEL VIA A PROPOSED CHANNEL CONNECTION. THE VOLUMES OF THESE PROPOSED FLOWS IS QUANTIFIED TO THE RIGHT.
 THESE PROPOSED DRAINAGE CONDITIONS ARE COMPARABLE TO THOSE IN THE "MASTER DEVELOPMENT PLAN" DATED DECEMBER, 1998.

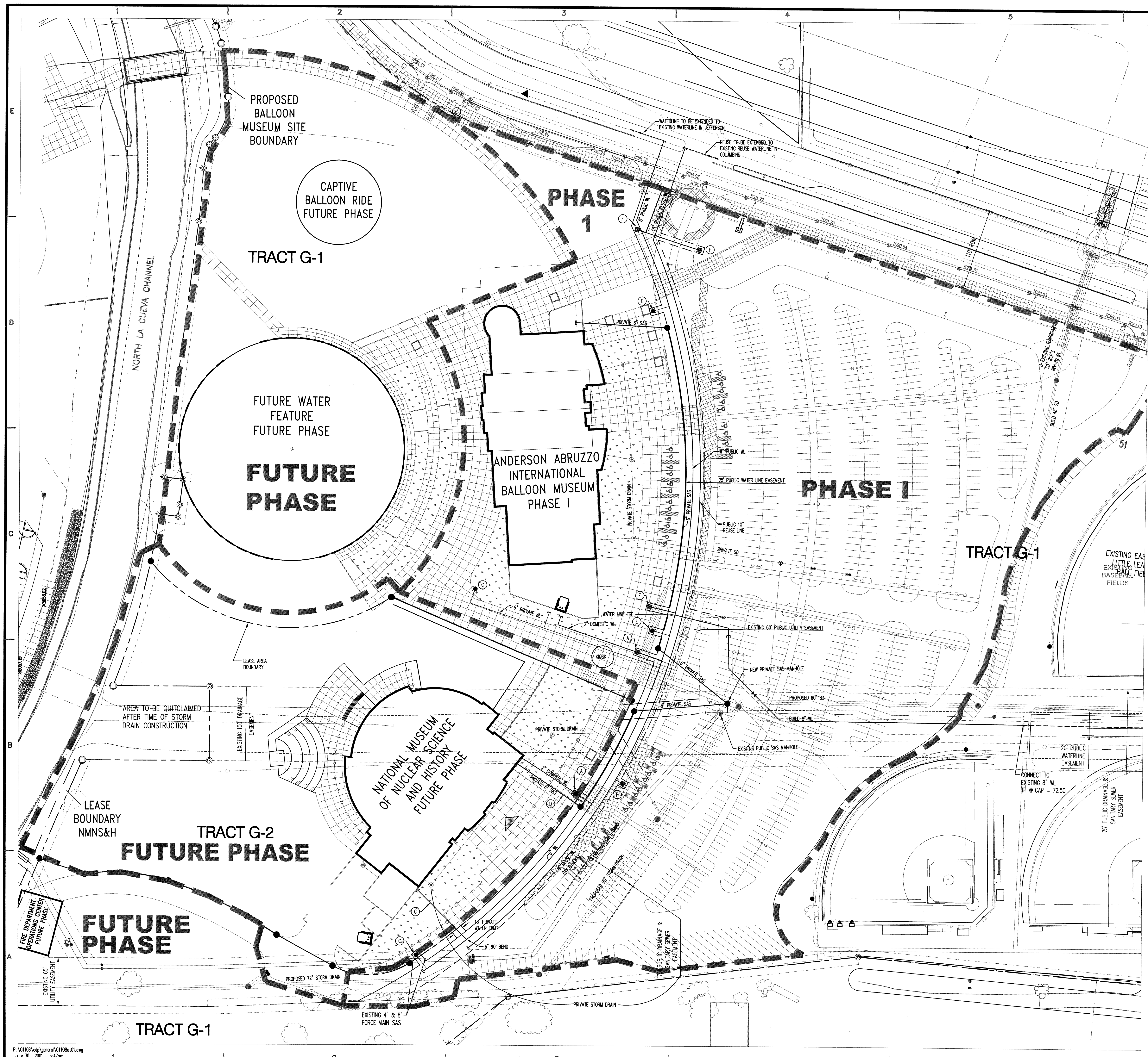
Bohannon & Huston
 Courtyard One 7500 JEFFERSON NE ALBUQUERQUE NEW MEXICO 87109
 ENGINEERS PLANNERS PHOTOGRAMMETRISTS SURVEYORS SOFTWARE DEVELOPERS



MARK	DATE	DESCRIPTION
ISSUE:		
PROJECT NO:	9729	
CAD DWG FILE:	01108UT01.DWG	
DRAWN BY:	S.F.G.	
CHECKED BY:	C.G.	
DATE:	08/09/00	

SHEET TITLE
 CONCEPTUAL GRADING & DRAINAGE PLAN

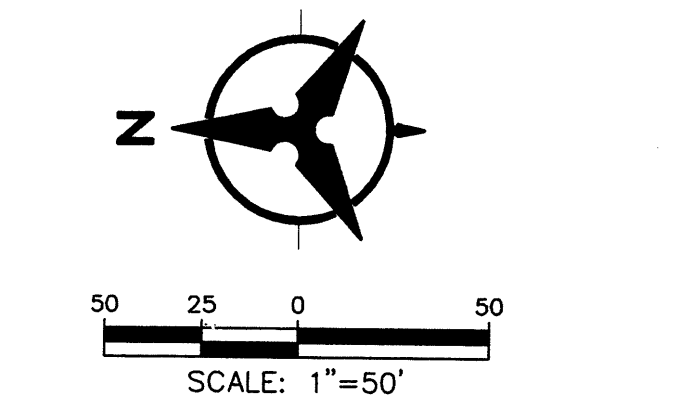
**THE MUSEUMS AT
ALBUQUERQUE
BALLOON FIESTA
PARK
ALBUQUERQUE, NEW MEXICO**



- LEGEND**
- PROPERTY LINE
 - EXISTING DROP INLET
 - EXISTING DUMPSTER
 - EXISTING FIRE HYDRANT
 - EXISTING LIGHT POLE
 - EXISTING POWER POLE
 - EXISTING SEWER MANHOLE
 - EXISTING SEWER RISER
 - EXISTING TRANSFORMER
 - EXISTING WATER METER
 - EXISTING WATER VALVE
 - PROPOSED STORM DRAIN LINE
 - PROPOSED STORM DRAIN MANHOLE
 - PROPOSED STORM DRAIN INLET
 - SAS
 - PROPOSED SANITARY SEWER LINE
 - PROPOSED SANITARY SEWER MANHOLE
 - PROPOSED SANITARY SEWER CLEANOUT
 - PROPOSED WATER LINE
 - PROPOSED VALVE
 - PROPOSED REDUCER
 - PROPOSED METER
 - PROPOSED FIRE HYDRANT
 - PHASE BOUNDARY

- KEYED NOTES**
- (A) NEW 2" DOMESTIC WATER SERVICE
 - (B) NEW 6" PRIVATE FIRE LINE
 - (C) NEW PRIVATE FIRE HYDRANT
 - (D) PRIVATE SAS LINE
 - (E) NEW PUBLIC HYDRANT
 - (F) 2" REUSE IRRIGATION LINE
 - (G) 6" PRIVATE WL FOR FIRE PROTECTION

- CONCEPTUAL UTILITY NOTES**
1. EACH BUILDING IS ASSUMED TO HAVE ITS OWN FIRE RISER FOR THE SPRINKLER SYSTEM.
 2. THIS PLAN ASSUMES THAT BACKFLOW PREVENTERS FOR DOMESTIC WATER ARE NOT REQUIRED OR THAT THEY ARE LOCATED INSIDE THE BUILDING.
 3. EXACT LOCATION (WHETHER IN MECHANICAL ROOM OR OUTSIDE IN A "HOTBOX") & TYPE OF BACKFLOW PREVENTER FOR FIRE PROTECTION WILL BE DETERMINED BY FINAL DESIGN.

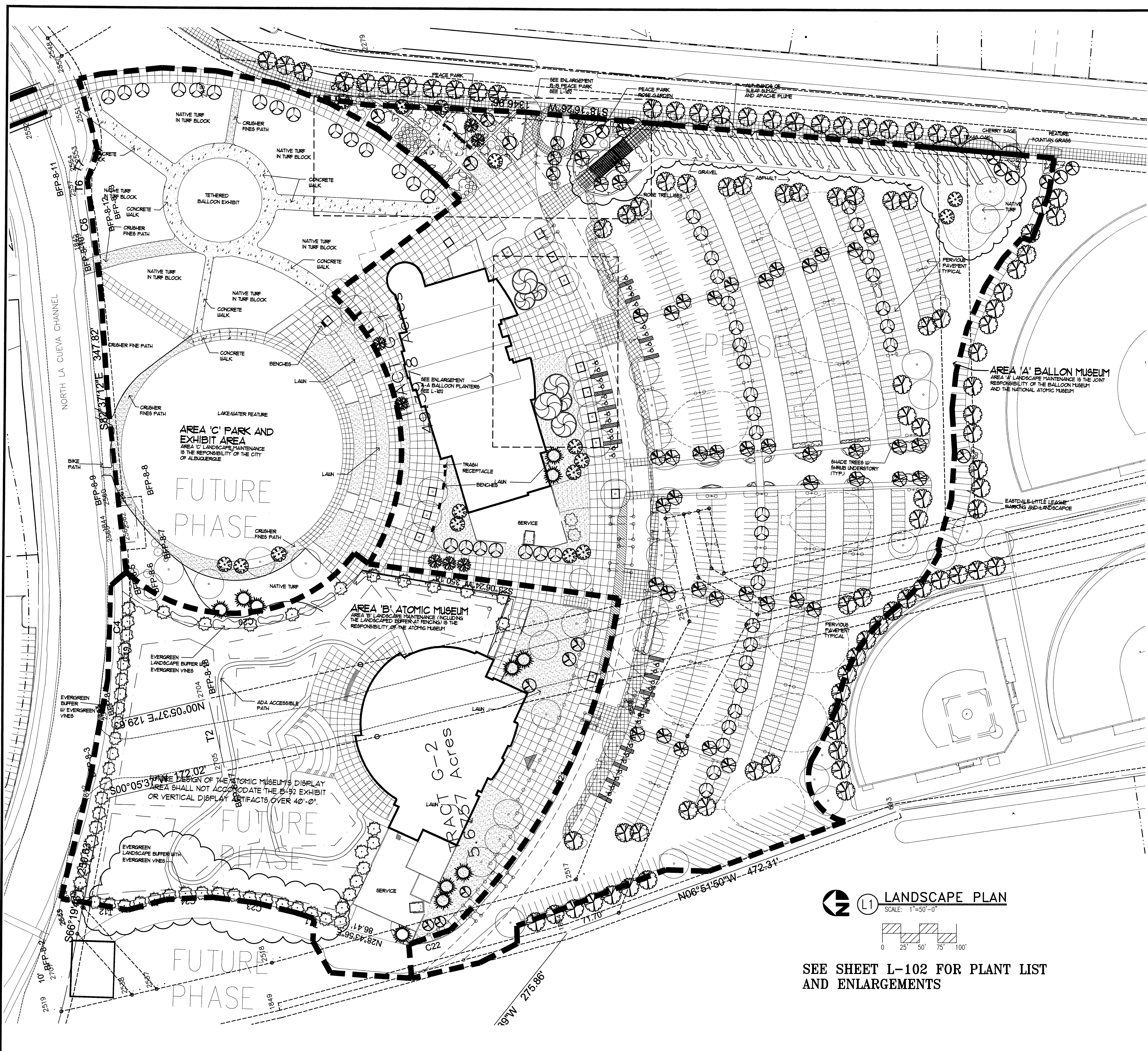


AFD PLANS CHECKING OFFICE
924-3511
APPROVED/DISAPPROVED
SIGNATURE & DATE

MARK	DATE	DESCRIPTION
ISSUE:		
PROJECT NO:	9729	
CAD DWG FILE:	01108UT01.DWG	
DRAWN BY:	S.F.G.	
CHECKED BY:	C.M.R.	
DATE:	08/09/00	

SHEET TITLE
CONCEPTUAL UTILITY PLAN

P:\01108\cadd\general\01108ut01.dwg
July 30, 2001 3:47pm



- LANDSCAPING NOTES**
- LANDSCAPE REQUIREMENTS**
NET LOT AREA: 1,141,699 SF
TOTAL LANDSCAPED AREA REQUIRED: 111,258 SF
(9% OF NET LOT AREA)
TOTAL LANDSCAPE AREA PROVIDED: 160,402 SF
(14% OF NET LOT AREA)
 - LANDSCAPE IRRIGATION**
AN AUTOMATIC RECLAIMED WATER IRRIGATION SYSTEM WILL BE PROVIDED PER COA BALLOON FIESTA PARK SPECIFICATIONS.
TURF: SPRAY IRRIGATION
TREES AND SHRUBS: BUBBLER IRRIGATION
 - A 4" DEPTH OF MULCH SHALL BE INSTALLED AT ALL SHRUB BEDS AND PARKING ISLANDS.
 - THIS PLAN IS IN COMPLIANCE WITH THE CITY OF ALBUQUERQUE WATER CONSERVATION, LANDSCAPING AND WATER WASTE ORDINANCE.



Design Collaborative Southwest, Inc.
320 Central Avenue, S.W.
Albuquerque, NM 87102
505-843-9639
dcs@dcswarchitects.com
www.dcsarchitects.com

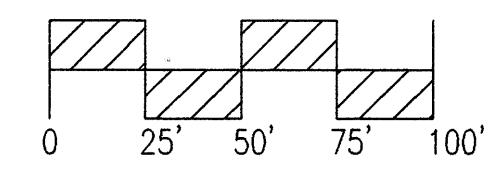
CONSULTANTS
MORROW REARDON WILKINSON, LTD.
LANDSCAPE ARCHITECTS
1111 N. TULLY BL. ALBUQUERQUE, NM 87108
505.268.2266 FAX 505.265.9537
mrw@mrwm.com



Architect Engineer

THE MUSEUMS AT THE ALBUQUERQUE BALLOON FIESTA PARK
ALBUQUERQUE, NEW MEXICO

L1 LANDSCAPE PLAN
SCALE: 1"=50'-0"



SEE SHEET L-102 FOR PLANT LIST AND ENLARGEMENTS

MARK	DATE	DESCRIPTION
ISSUE:		EPC SUBMITTAL
PROJECT NO:		9729
CAD DWG FILE:		1900ECP.LT
DRAWN BY:		RHT
CHECKED BY:		KR
DATE:		07/05/01

SHEET TITLE
LANDSCAPE PLAN
E.P.C. SUBMITTAL

L-101
sheet of sheets

NAME: D:\1900\1900ECP.LT.DWG DATE: JULY 16, 2001 TIME: 9:49 AM PLOT II VIEW SHEET: BASE NEW VISION 1:10-01 VAL: RHT
 Copyright 1997, Construction Specifications Institute, 601 Madison Street, Alexandria, VA 22314-1791

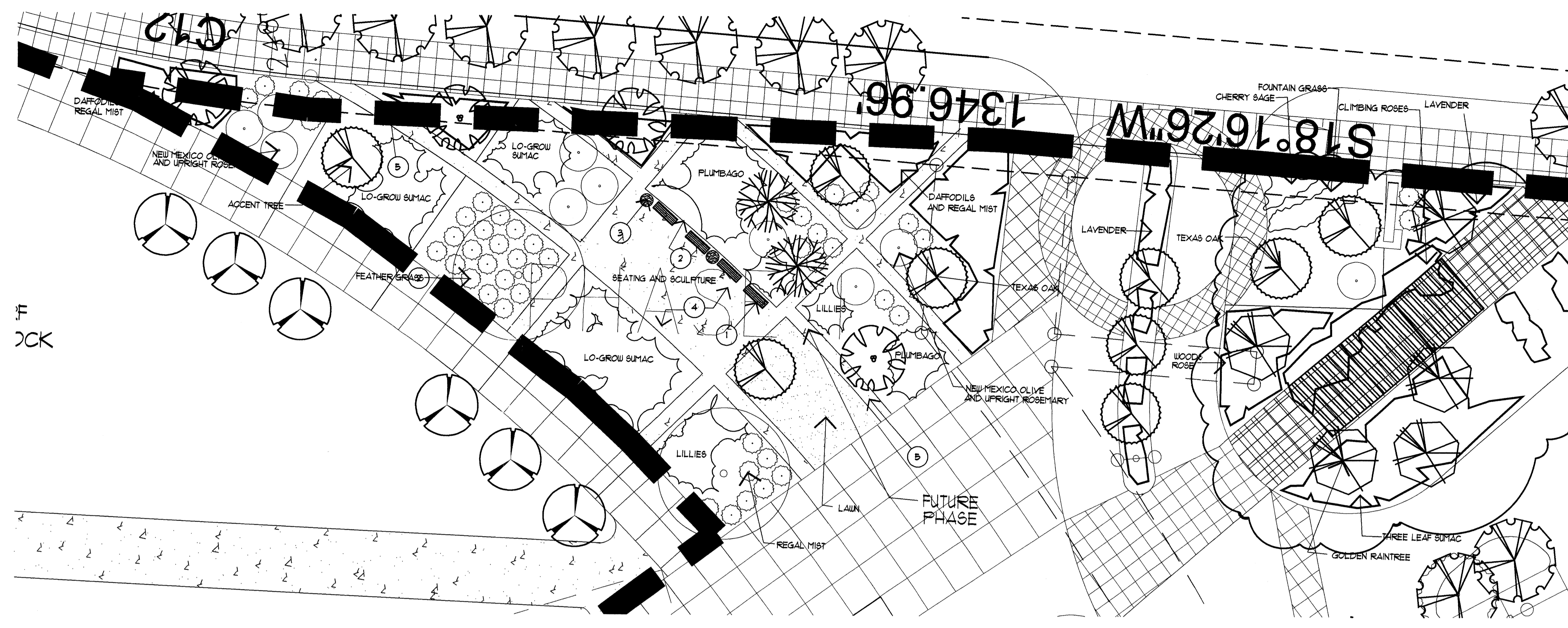


Architect Engineer

THE MUSEUMS AT THE ALBUQUERQUE BALLOON FIESTA PARK
ALBUQUERQUE, NEW MEXICO

MARK	DATE	DESCRIPTION
ISSUE:		EPC SUBMITTAL
PROJECT NO:		9729
CAD DWG FILE:		1900EPCPLT
DRAWN BY:		RHT/VW
CHECKED BY:		KR
DATE:		07/05/01

SHEET TITLE
ENLARGED PLANS, DETAILS AND PLANT LIST

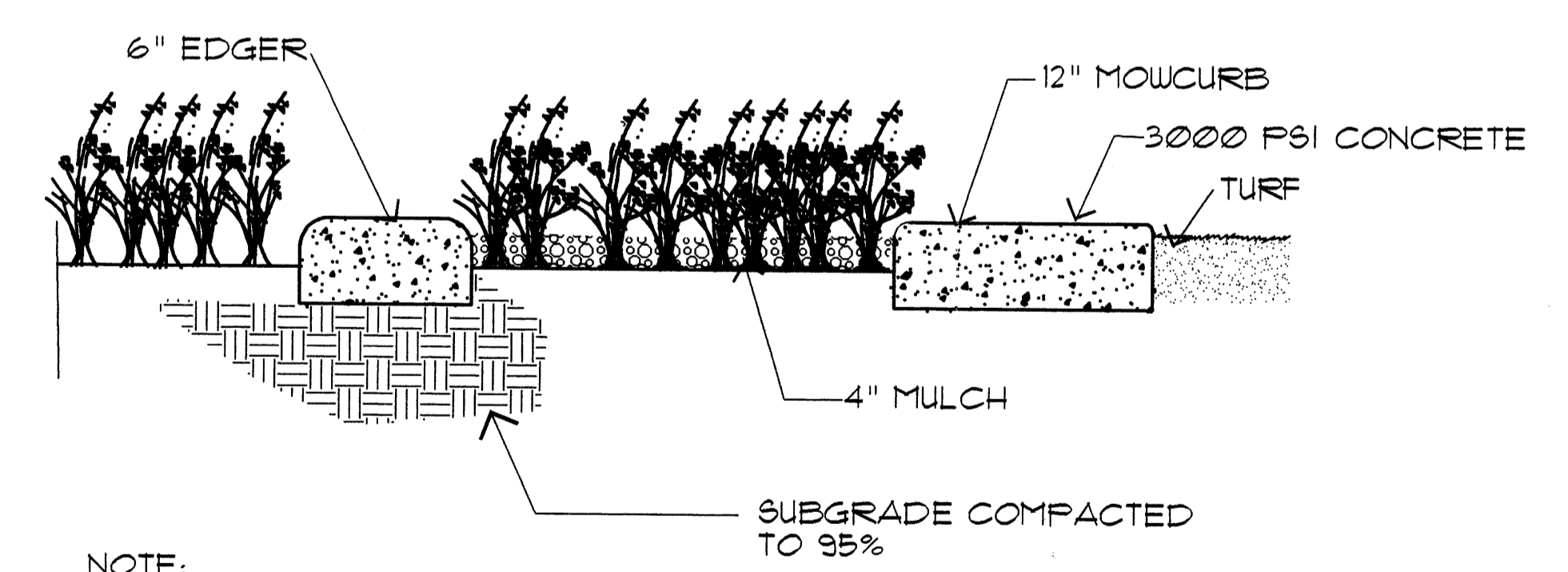


- KEYED NOTES FOR ENLARGEMENT B-B:**
- 1 8'-0" DUMOR BENCHES OF RECYCLED MATERIALS. COLOR TO BE GREY.
 - 2 18" MAXIMUM INTEGRALLY COLORED CONCRETE RETAINING WALL AS NECESSARY. INTEGRAL COLOR TO BE DAVIS SAN DIEGO BUFF.
 - 3 DUMOR RECYCLED PLASTIC TRASH RECEPTACLE. COLOR TO BE GREY.
 - 4 INTEGRALLY COLORED CONCRETE SLAB WITH LIGHT BROOM FINISH. INTEGRAL COLORED CONCRETE TO BE DAVIS SUNSET ROSE.
 - 5 STANDARD GREY CONCRETE SIDEWALK. LIGHT BROOM FINISH WITH 4" TROULLETTED EDGE.

ENLARGEMENT B-B PEACE PARK
1" = 20'-0"



ENLARGEMENT A-A BALLOON PLANTERS
1" = 20'-0"



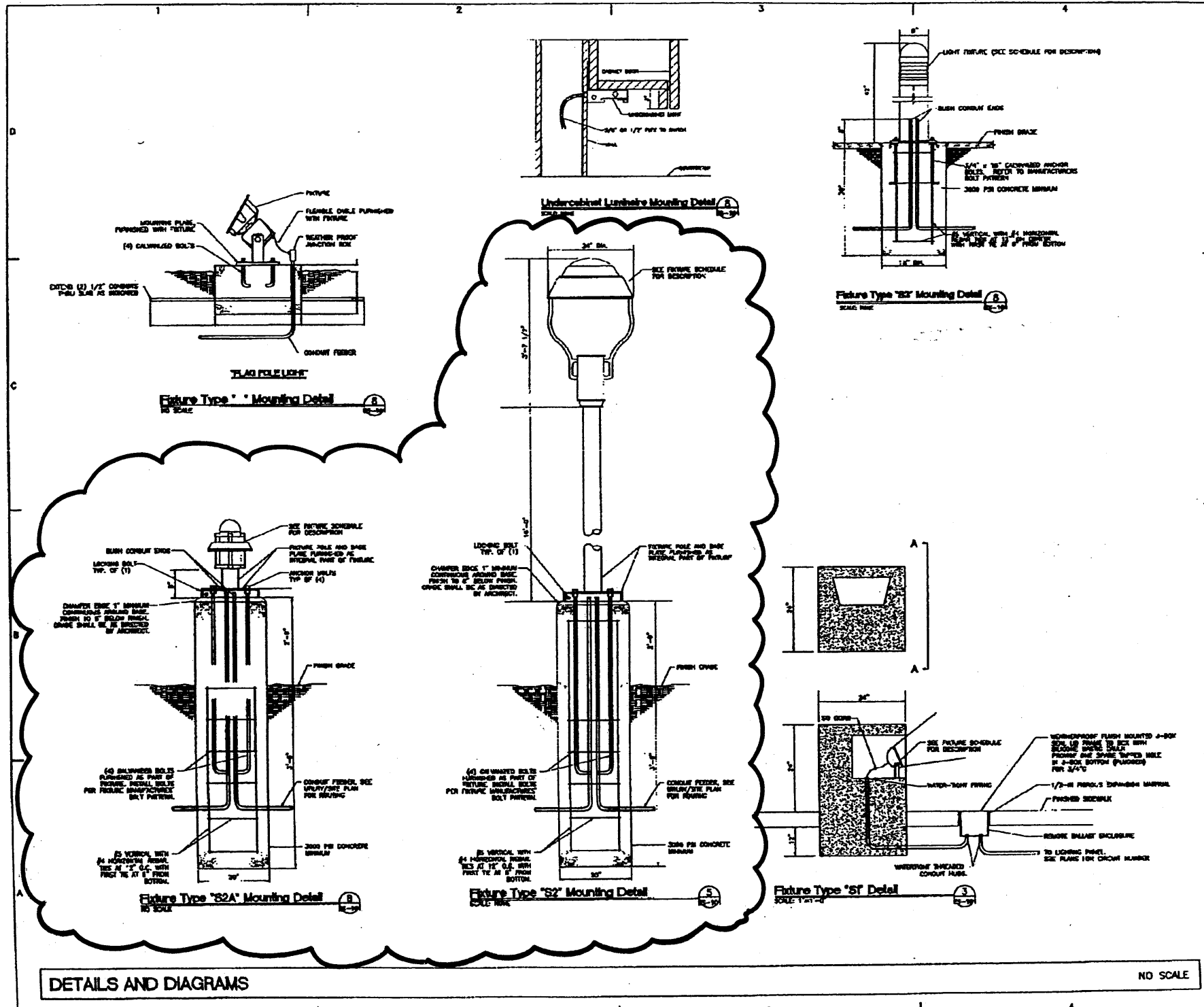
NOTE:
EXPANSION JOINTS @ 20'-0" O.C.
WITH CONTROL JOINTS @ 5'-0" O.C.

BALLOON PLANTER SECTION
MCD-0024 110895 N.T.S.

SYMBOL	COMMON NAME	BOTANICAL NAME	QUANTITY	MATURE SIZE	SYMBOL	COMMON NAME	BOTANICAL NAME	QUANTITY	MATURE SIZE
DECIDUOUS TREES					SHRUBS (cont.)				
	Bradford Pear	<i>Pyrus calleryana</i> 'Bradford'		25'W X 30' H		Lavender	<i>Lavandula angustifolia</i>		2' W X 2' H
	Redbud	<i>Cercis canadensis</i>		25'W X 30' H		Silvermound	<i>Artemisia caucasicola</i>		3' W X 4' H
	London Plane Tree	<i>Platanus acerifolia</i>		40'W X 40' H		Lovegrass	<i>Caristagrostis tricoedes</i>		5' W X 4' H
	Modesto Ash	<i>Fraxinus velutina</i> 'Modesto'		25'W X 30' H		Santolina	<i>Santolina virens</i>		4' W X 2' H
	Golden Rain Tree	<i>Koelreuteria paniculata</i>		25'W X 30' H		Dusty Miller	<i>Senecio cineraria</i>		3'W X 2' H
	Paper Birch	<i>Betula papyrifera</i>		25'W X 30' H		Prairie Sage	<i>Artemisia ludoviciana</i>		18" X 18"
	Texas Oak	<i>Quercus texana</i>		30' W X 35' H		Roses	<i>Rosa spp.</i>		VARIABLE
EVERGREEN TREES						Butterfly Bush	<i>Buddleia davidii</i>		5' W X 4' H
	Austrian Pine	<i>Pinus nigra</i>		35'W X 35' H		Threadgrass	<i>Stipa tenuifolia</i>		18" W X 18" H
	Italian Stone Pine	<i>Pinus pinas</i>		35'W X 35' H		Threadleaf Sumac	<i>Rhus trilobata</i>		5'W X 6' H
SHRUBS						Zebra Grass	<i>Miscanthus sinensis</i> 'Zabrinus'		5' W X 4' H
	Blue Fescue	<i>Festuca ovina glauca</i>		18" X 18"		Dwarf Fountain Grass	<i>Fernisium alopecuroides</i>		3' W X 3' H
	Cherry Sage	<i>Salvia greggii</i>		3' W X 4' H		Little Bluestem	<i>Schizachyrium scoparium</i>		2'W X 3' H
	Fountain Grass	<i>Fernisium alopecuroides</i>		5' W X 4' H	VINES				
	Miscanthus (common)	<i>Miscanthus sinensis</i> 'Gracillimus'		6' W X 5' H		English Ivy	<i>Hedra helix</i>		30' spcl.
	Regal Mist Munity	<i>Muhlenbergia 'Regal Mist'</i>		3'W X 2' H		Boston Ivy	<i>Parthenocissus tricuspidata</i>		30' spcl.
	New Mexico Olive	<i>Forestiera neomexicana</i>		20' W X 20' H	LAWN				
						Park Blend	<i>Poa pratensis</i> 'Adelphi'		6od
						NATIVE TURF	<i>Festuca elatior</i> 'Palcon'		6od
						Blue Grama	<i>Lolium perenne</i> 'Pamfina'		6od
							<i>Budraea distachyoides</i>		6od
							<i>Bouteloua gracilis</i>		6 3 lbs/1000 sf

L:\MCD\1900\BALLOON\SEPP\170809\APP\11.DWG DATE: APR 06, 2001 TIME: 11:18 AM PLOT: I:\VIEW\BIBETA.BASE REVISION: 3-23-00 VU

Jan 17, 2002



KEY PLAN:

PRS
Group

DCSW
Design Consulting Services, Inc.
2111 West 24th Street, Suite 100
Albuquerque, NM 87110
Tel: 505-262-1234
Fax: 505-262-1235
www.dcsww.com

CITY OF ALBUQUERQUE
PUBLIC WORKS DEPARTMENT
ALBUQUERQUE INTERNATIONAL BALLOON MUSEUM
DETAILS AND DIAGRAMS

Design Review Committee	City Engineer Approval	City Architect Approval

City Project No. **A/E 5202-01** | Zone Map No. **B-17 & C-17** | Sheet **E-502** of 169

SURVEY INFORMATION		BENCH MARKS		AS-BUILT INFORMATION	
IND.	FIELD NOTES	DATE	BY	DATE	BY

ENGINEER'S SEAL: NOT FOR CONSTRUCTION

REVISIONS:

No.	Date	REVISIONS
	08/14/01	DESIGN
	08/14/01	
	08/14/01	

DESIGNED BY: []
CHECKED BY: []
CONSTRUCTED BY: []