

PROJECT 1000375

DRIVEWAY

WALKWAY

EXISTING CANOPY

NAPOLI COFFEE  
2839 CARLISLE NE

OUTSIDE SEATING  
PLAN.

1/4" = 1'-0"

EXIST  
LANDSCAPE  
AREA

15'-0"

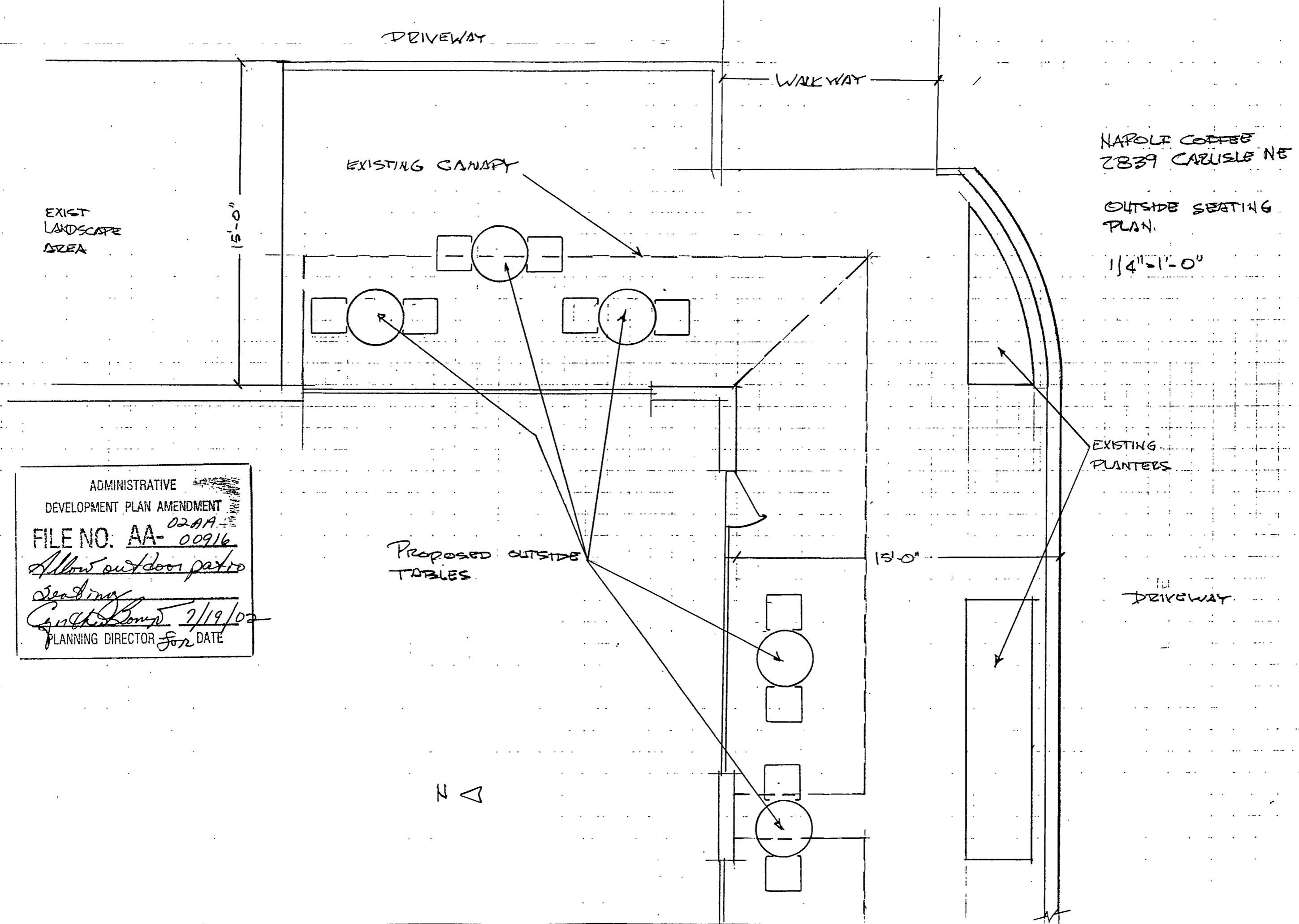
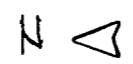
EXISTING  
PLANTERS

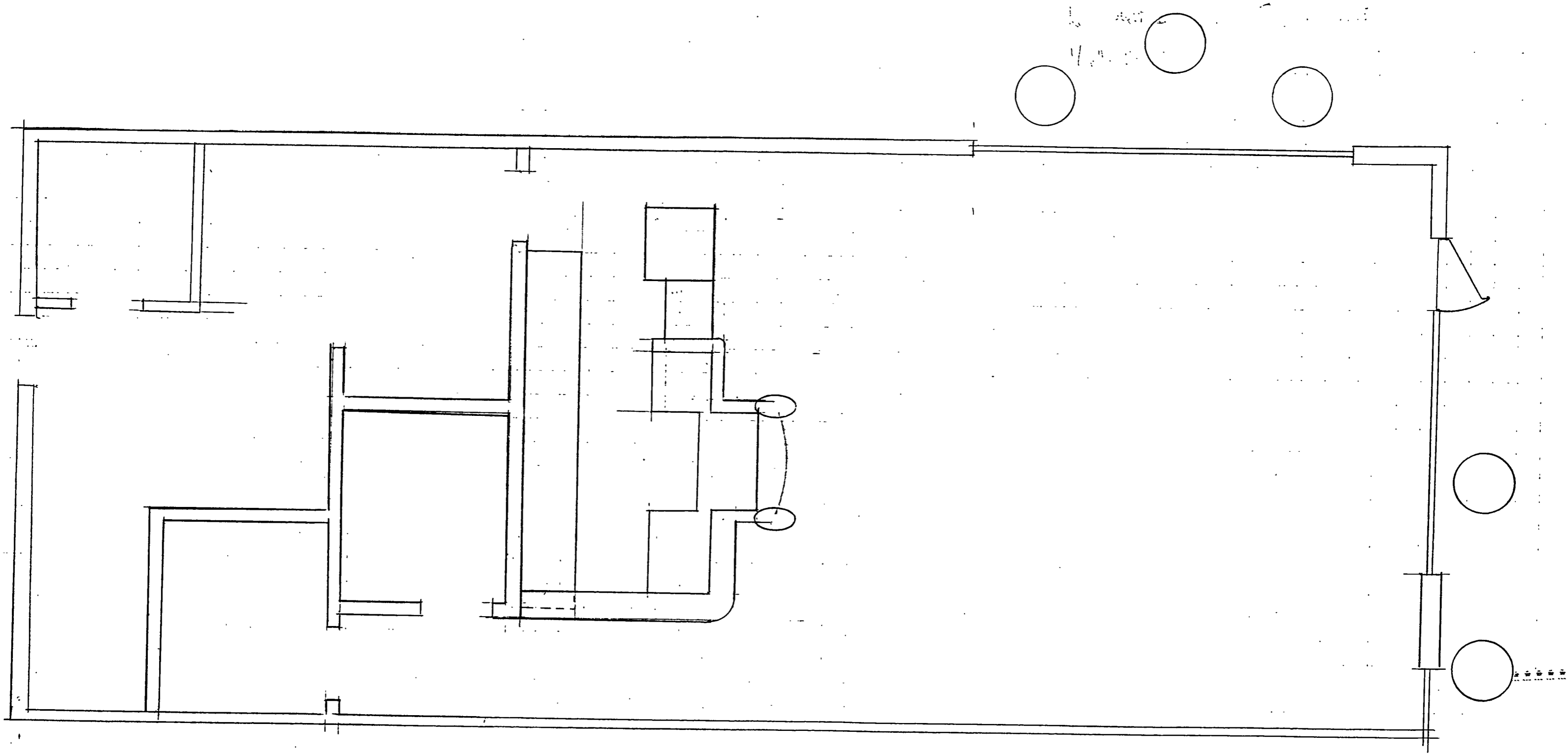
Proposed OUTSIDE  
TABLES

15'-0"

DRIVEWAY

ADMINISTRATIVE  
DEVELOPMENT PLAN AMENDMENT  
02AA-  
FILE NO. AA- 00916  
*Allow outdoor patio  
seating*  
*Cynthia Bond* 7/19/02  
PLANNING DIRECTOR FOR DATE





1/2" = 1'-0"

N

NAPOLI COFFEE  
1/4" = 1'-0"



July 11, 2002

Bel-Air Neighborhood  
2700 Hermosa NE  
Albuquerque, NM 87110

Atten: Ms. Barb Johnson

Gentlemen,

We are opening an Espresso Cafe in the Shops at Carlisle shopping center. We intend to have a small outside seating area for people to enjoy the best tasting espresso coffee in Albuquerque. Our hours of operation are 6:00 a.m. to 8:00 p.m..

If you have any objections to us having outside seating could you please notify Ms. Cynthia Borrego, (505-924-3335) with the City of Albuquerque Planning Department.

Yours Truly,

Mike Halcom  
Napoli Coffee