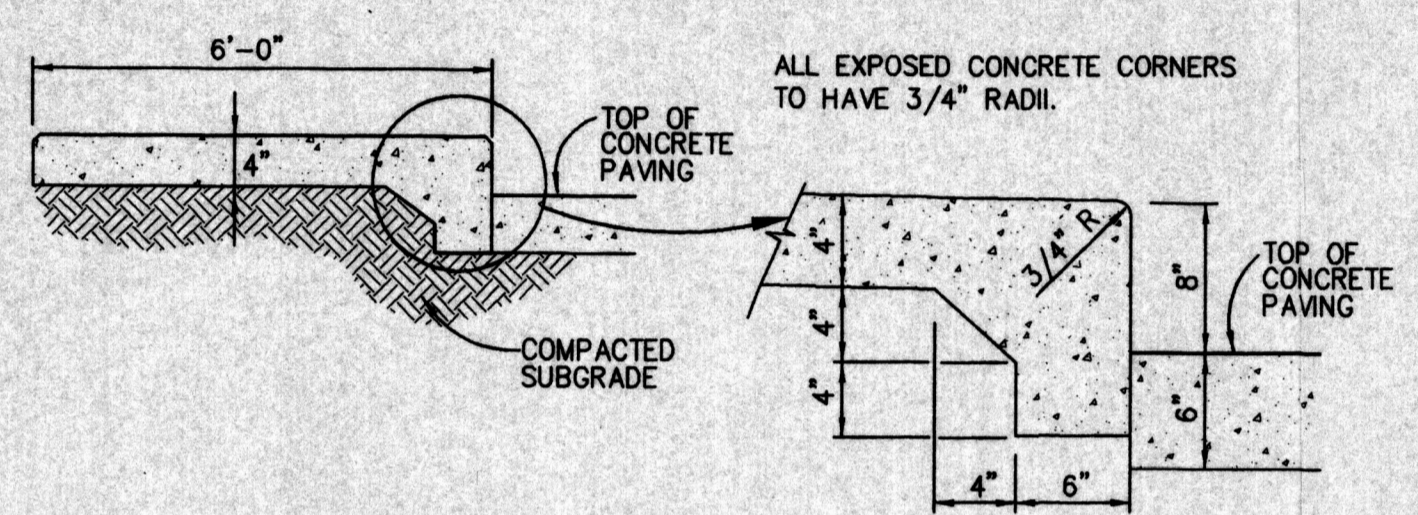
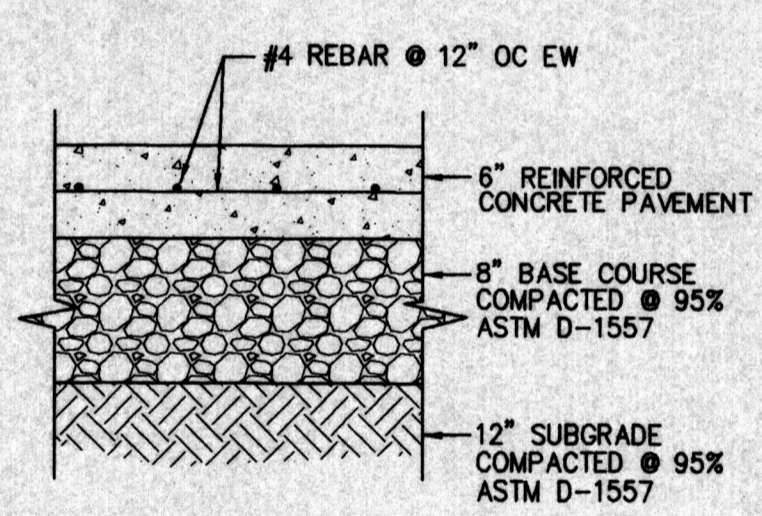


- CONSTRUCTION NOTES:**
1. PROVIDE 1/2" EXPANSION JOINTS AT 36' O.C., AT IMMOVABLE OBJECTS AND AT BEGINNING AND END OF CURVES. PROVIDE 1 1/2" DEEP CONTRACTION JOINTS AT 6' O.C.
  2. CONCRETE SHALL BE 4000 PSI AT 28 DAYS.



1 12" TURNDOWN SIDEWALK NTS



2 CONCRETE PAVING SECTION NTS

**LEGEND**

ASPHALT	
ROLL CURB	
UNDERGROUND US WEST	
OVERHEAD ELECTRIC	
WOOD FENCE	
LIGHT POLE	
CONTOURS	
POWER POLE	
STORM MANHOLE	
EXISTING SPOT ELEVATION	
NEW SPOT ELEVATION	
HIGH POINT	

- KEYNOTES**
1. REPLACE MANHOLE LID WITH NEENAH FOUNDARY R-2578 CONVEX GRATE OR APPROVED EQUAL, EXISTING RIM 52.00.
  2. INSTALL PARKING BUMPER.
  3. CONSTRUCT HANDICAP RAMP PER COA STD DWG 2441.
  4. CONSTRUCT 6' TURNDOWN SIDEWALK PER DETAIL 1 THIS SHEET.
  5. CONSTRUCT CONCRETE PARKING AREA PER DETAIL 2 THIS SHEET.
  6. CONSTRUCT 4' SIDEWALK WITH 8" STANDARD CURB & GUTTER PER COA STD DWG 2415.
  7. CONSTRUCT 3' SIDEWALK WITH 8" STANDARD CURB & GUTTER PER COA STD DWG 2415.
  8. CONNECT NEW 8" STANDARD CURB & GUTTER TO EXISTING 8" STANDARD CURB AND GUTTER PER COA STD DWG 2415.
  9. HANDICAP RAMP TRANSITION FROM 8" STANDARD CURB & GUTTER TO EXISTING ROLL TYPE MOUNTABLE CURB.
  10. SAWCUT EXISTING SIDEWALK. REMOVE SIDEWALK BETWEEN SAWCUTS.

- CONSTRUCTION NOTES**
1. ALL STRIPING TO BE 4" WIDE WHITE STRIPES.
  2. ALL ROLLTYPE MOUNTABLE CURB TO REMAIN.

**PHASE II LOT AREAS IN ACREAGE**

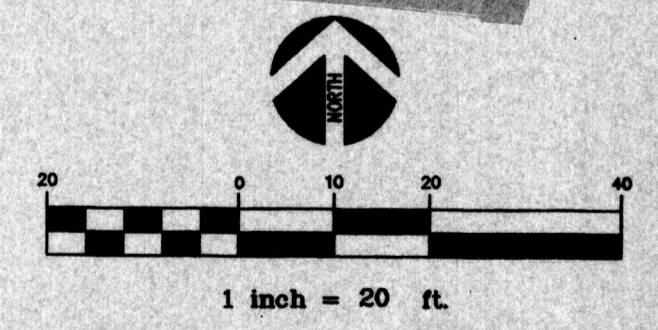
BLOCK	LOT	ACRE
1	A1	0.0661
1	A2	0.0573
1	A3	0.0572
1	A4	0.2844

Application # 01450-0000-00902

**CITY OF ALBUQUERQUE**

REVIEWED BY	SIGNATURE	DATE
SOLID WASTE MANAGEMENT	<i>[Signature]</i>	8-10-01
PARKS & RECREATION	<i>[Signature]</i>	8/7/01
UTILITIES DIVISION	<i>[Signature]</i>	8/7/01
HYDROLOGY DIVISION	<i>[Signature]</i>	8/7/01
PLANNING DIVISION	<i>[Signature]</i>	8/13/01
TRAFFIC DIVISION	<i>[Signature]</i>	8-07-01

Project # 1000492



REV.	DATE	DESCRIPTION	DRAWN	APPRD.
1	8/20/01	SITE PLAN REVISION	BO	JK

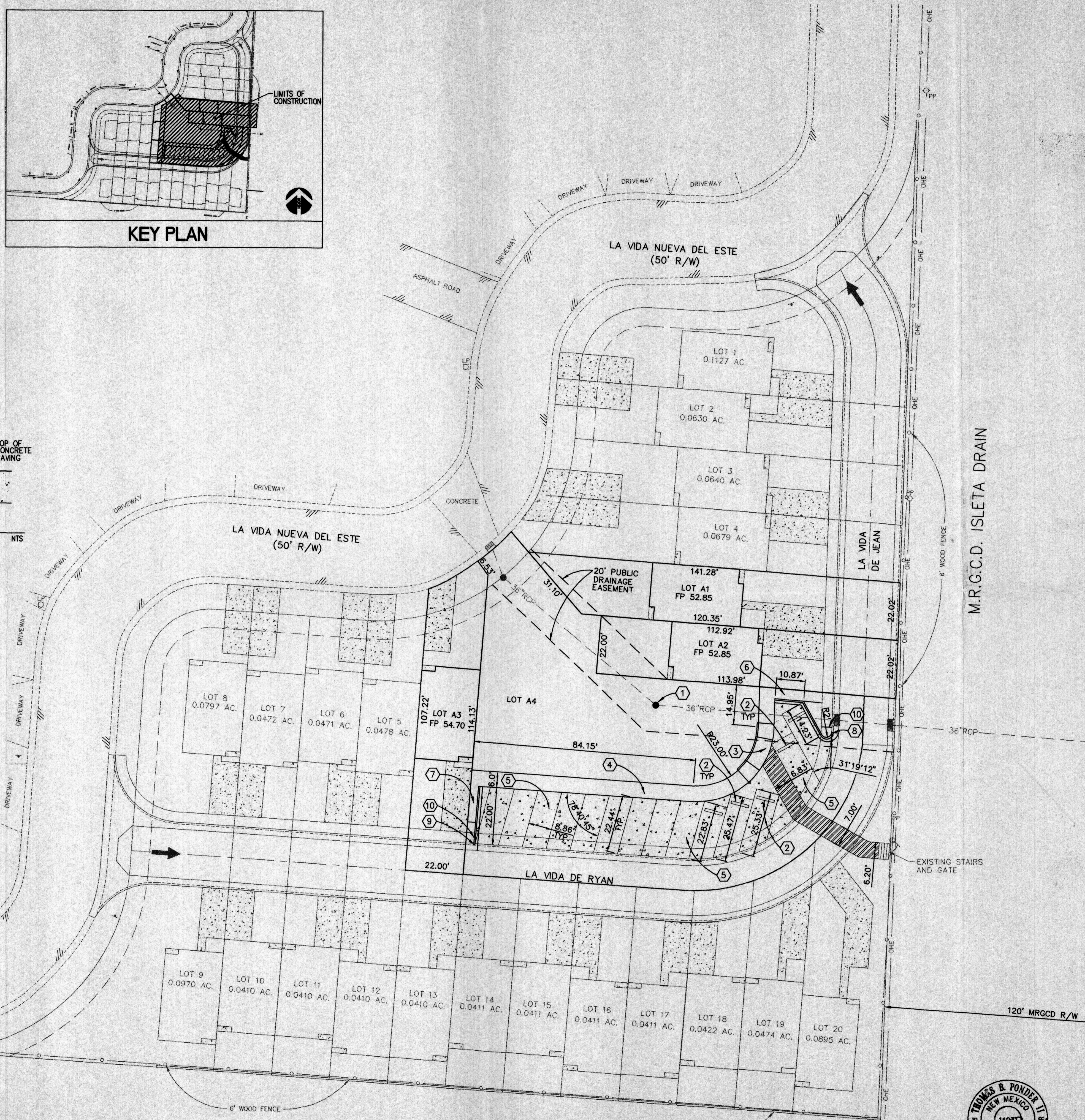
**CHAVEZ • GRIEVES**  
CONSULTING ENGINEERS, INC.  
5630 JEFFERSON STREET N.E. • ALBUQUERQUE, NEW MEXICO 87109  
PHONE (505) 344-4080 • FAX (505) 343-8759

**LA VIDA NUEVA SUBDIVISION**  
HABITAT FOR HUMANITY  
ALBUQUERQUE, NEW MEXICO

**SITE PLAN FOR BUILDING PERMIT**  
PHASE II

DESIGNED BY:	JK	SCALE:	1" = 20'
DRAWN BY:	PG	JOB NUMBER:	H35-100-5198
REVIEWED BY:	BP	DATE:	05/04/01

**DRB3**  
3 of 3

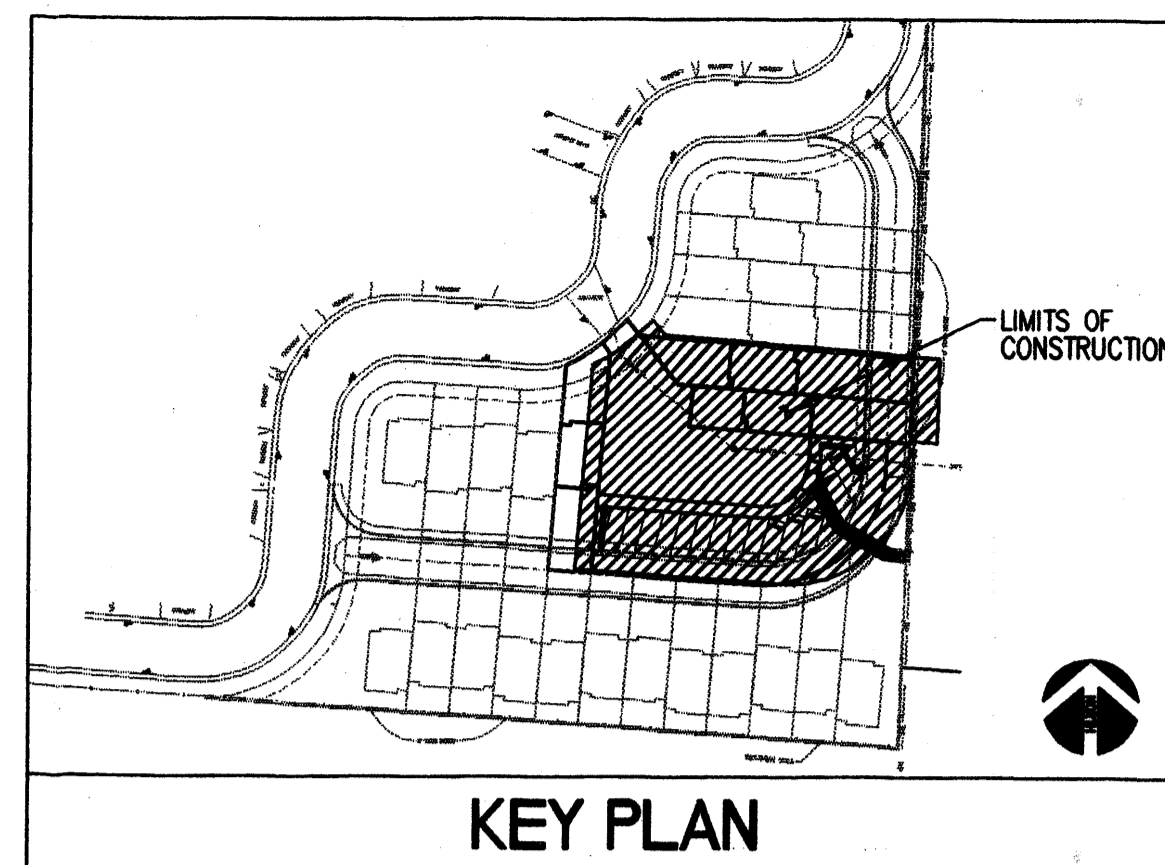
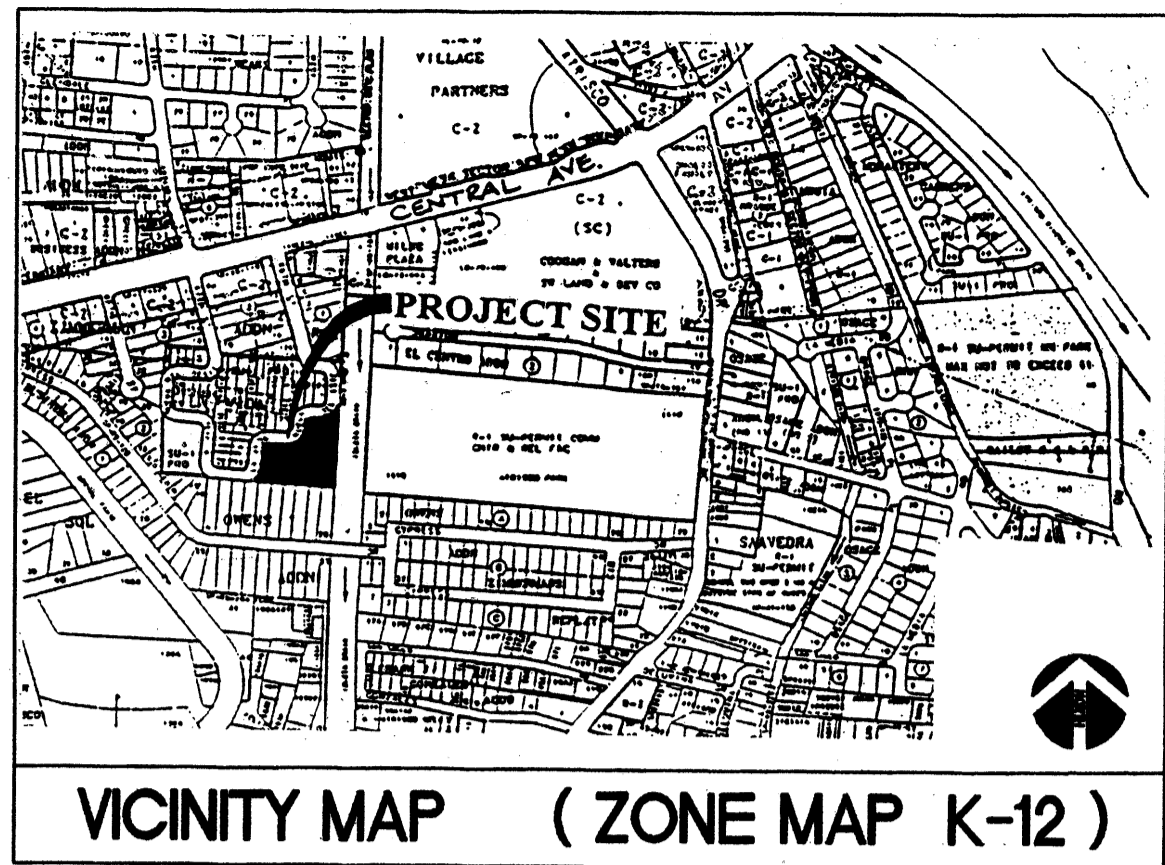


OWENS ADDITION  
FILED MAY 28, 1940  
BOOK C, PAGE 40



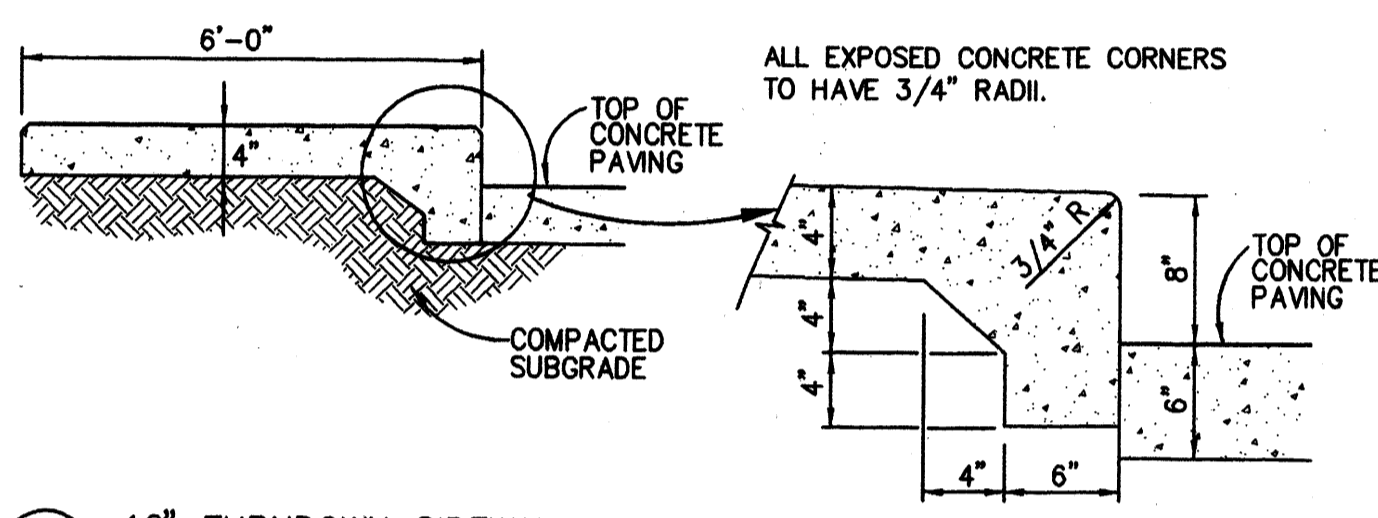
JOB NO.: H35-100-5198  
FILE: G:\H35\100\DWG\REV\_050301\LVNS\_DRB3.DWG  
ENG/TECH: JK/PG/BO  
REV: 05/20/01 PG

PROJ 1000492

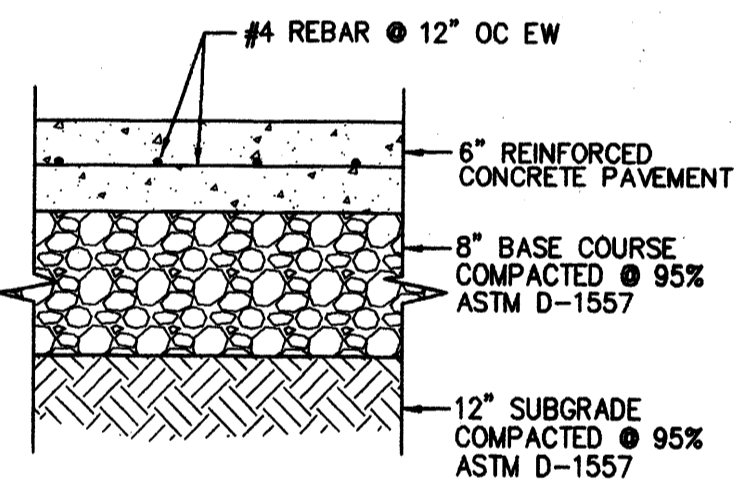


**CONSTRUCTION NOTES:**

1. PROVIDE 1/2" EXPANSION JOINTS AT 36" O.C., AT IMMOVABLE OBJECTS AND AT BEGINNING AND END OF CURVES. PROVIDE 1 1/2" DEEP CONTRACTION JOINTS AT 6" O.C.
2. CONCRETE SHALL BE 4000 PSI AT 28 DAYS.



1 12" TURNDOWN SIDEWALK NTS



2 CONCRETE PAVING SECTION NTS

**LEGEND**

ASPHALT	
ROLL CURB	
UNDERGROUND US WEST	
OVERHEAD ELECTRIC	
WOOD FENCE	
LIGHT POLE	
CONTOURS	5182
POWER POLE	
STORM MANHOLE	
EXISTING SPOT ELEVATION	
NEW SPOT ELEVATION	49.61
HIGH POINT	

- KEYNOTES**
1. REPLACE MANHOLE LID WITH NEENAH FOUNDARY R-2578 CONVEX GRATE OR APPROVED EQUAL, EXISTING RIM 52.00.
  2. INSTALL PARKING BUMPER.
  3. CONSTRUCT HANDICAP RAMP PER COA STD DWG 2441.
  4. CONSTRUCT 6" TURNDOWN SIDEWALK PER DETAIL 1 THIS SHEET.
  5. CONSTRUCT CONCRETE PARKING AREA PER DETAIL 2 THIS SHEET.
  6. CONSTRUCT 4" SIDEWALK WITH 8" STANDARD CURB & GUTTER PER COA STD DWG 2415.
  7. CONSTRUCT 3" SIDEWALK WITH 8" STANDARD CURB & GUTTER PER COA STD DWG 2415.
  8. CONNECT NEW 8" STANDARD CURB & GUTTER TO EXISTING 8" STANDARD CURB AND GUTTER PER COA STD DWG 2415.
  9. HANDICAP RAMP. TRANSITION FROM 8" STANDARD CURB & GUTTER TO EXISTING ROLL TYPE MOUNTABLE CURB.
  10. SAWCUT EXISTING SIDEWALK. REMOVE SIDEWALK BETWEEN SAWCUTS.

- CONSTRUCTION NOTES**
1. ALL STRIPING TO BE 4" WIDE WHITE STRIPES.
  2. ALL ROLLTYPE MOUNTABLE CURB TO REMAIN.

**PHASE II LOT AREAS IN ACREAGE**

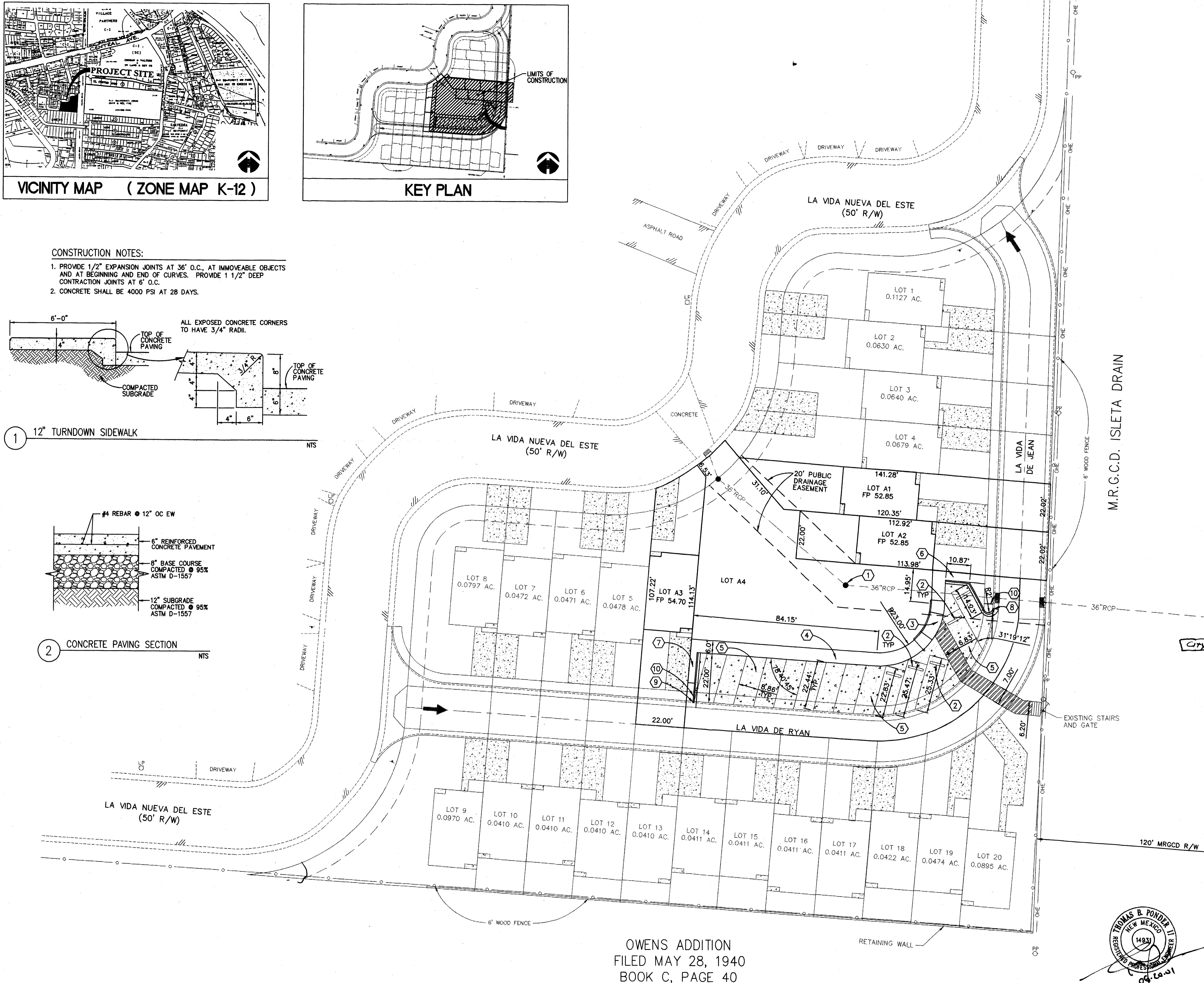
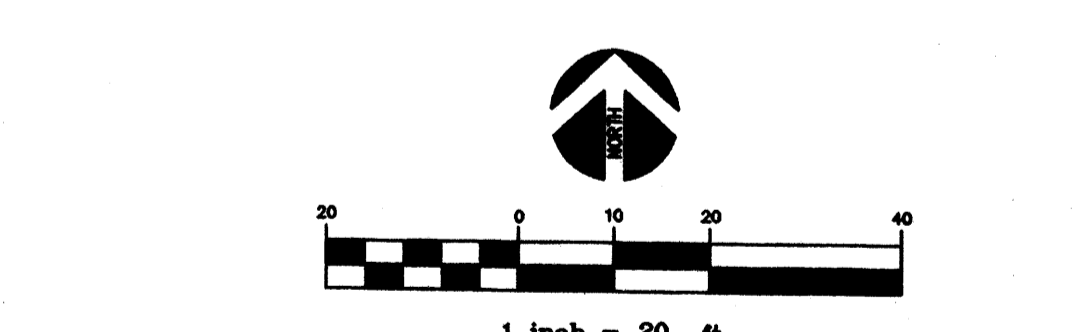
BLOCK	LOT	ACRE
1	A1	0.0661
1	A2	0.0573
1	A3	0.0572
1	A4	0.2844

APPLICATION # 01430-00000-00902

**CITY OF ALBUQUERQUE**

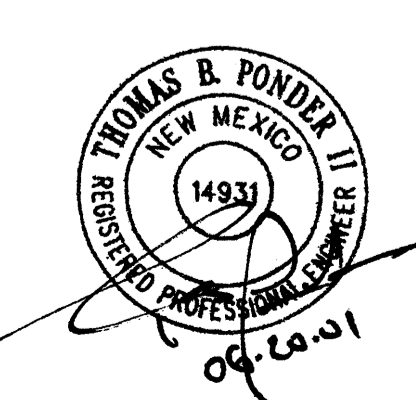
REVIEWED BY	SIGNATURE	DATE
SOLID WASTE MANAGEMENT	N/A (S)	
PARKS & RECREATION	<i>[Signature]</i>	8/1/01
UTILITIES DIVISION	<i>[Signature]</i>	8/1/01
HYDROLOGY DIVISION	<i>[Signature]</i>	8/1/01
PLANNING DIVISION	<i>[Signature]</i>	5/13/01
TRAFFIC DIVISION	<i>[Signature]</i>	8/2/01

PROJECT # 1000492



M.R.G.C.D. ISLETA DRAIN

OWENS ADDITION  
FILED MAY 28, 1940  
BOOK C, PAGE 40



REV.	DATE	DESCRIPTION	DRAWN	APP'D.
1	6/20/01	SITE PLAN REVISION	BO	JK

**CHAVEZ • GRIEVES CONSULTING ENGINEERS, INC.**  
5639 JEFFERSON STREET N.E. • ALBUQUERQUE, NEW MEXICO 87109  
PHONE (505) 344-4080 • FAX (505) 343-8758

**LA VIDA NUEVA SUBDIVISION  
HABITAT FOR HUMANITY  
ALBUQUERQUE, NEW MEXICO**

**SITE PLAN FOR SUBDIVISION  
PHASE II**

DESIGNED BY:	SCALE:	<b>DRB1</b>
DRAWN BY:	JOB NUMBER:	
REVIEWED BY:	DATE:	

1 of 3

JOB NO.: H35-100-5199  
ENG/TECH: SK/PG/BO  
REV: 06/20/01 BO