

PLANT LEGEND

Symbol	Scientific Name Common Name	Size	Remarks	Water Use
Trees				
○	<i>Fraxinus oxycarpa</i> Raywood/ Raywood Ash	2" B&B	14' ht. x 6' spr. 35' ht. x 30' spr.	Medium+
●	<i>Pinus leucodermis</i> / Bosnian Pine	B&B	6' min ht. 20' ht. x 30' spr.	Medium
○	<i>Platanus mexicana</i> / Mexican Sycamore	2 1/2" B&B	16' ht. x 6' spr. 10' ht. x 60' spr.	Medium
⊕	<i>Pyrus calleryana</i> / Ornamental Pear	2" B&B	8' ht. x 3' spr. 20' ht. x 15' spr.	Low
Shrubs				
⊗	<i>Caryopteris clandonensis</i> / Blue Mist	5-Gal.	3' o.c. 3' ht. x 3' spr.	Medium
⊕	<i>Chrysothamnus nauseosus</i> / Chamisa	5-Gal.	5' o.c. 4' ht. x 4' spr.	Low
⊗	<i>Cotoneaster apiculatus</i> / Cranberry Cotoneaster	5-Gal.	4' o.c. 3' ht. x 4' spr.	Medium
*	<i>Hesperaloe parviflora</i> / Red Yucca	5-Gal.	3' o.c. 3' ht. x 3' spr.	Medium
⊕	<i>Oenothera speciosa</i> / Mexican Evening Primrose	5-Gal.	4' o.c. 1' ht. x 4' spr.	Low +
⊗	<i>Perovskia atriplicifolia</i> / Russian Sage	5-Gal.	5' o.c. 4' ht. x 5' spr.	Medium
⊕	<i>Rosmarinus officinalis</i> / Rosemary	5-Gal.	3' o.c. 3' ht. x 3' spr.	Low +
⊗	<i>Cotoneaster horizontalis</i> / Rockspray Cotoneaster	5-Gal.		Low
Ornamental Grasses				
○	<i>Calamagrostis acutiflora</i> / Karl Forster Feather Reed Grass	5-Gal.		Low
⊕	<i>Pennisetum orientale</i> "ball tales" Oriental Fountain Grass	5-Gal.	3' o.c. 3' ht. x 3' spr.	Medium
*	<i>Nassella tenuissima</i> / Threadgrass	5-Gal.	3' o.c. 2' ht. x 2' spr.	Low +
⊕	<i>Sporobolus cryptandrus</i> / Sand Dropseed	5-Gal.	3' o.c. 1' ht. x 2' spr.	Low
⊕	<i>Coraderia selloana</i> / Pampas Grass	5-Gal.	3' o.c. 6' ht. x 4'	Low

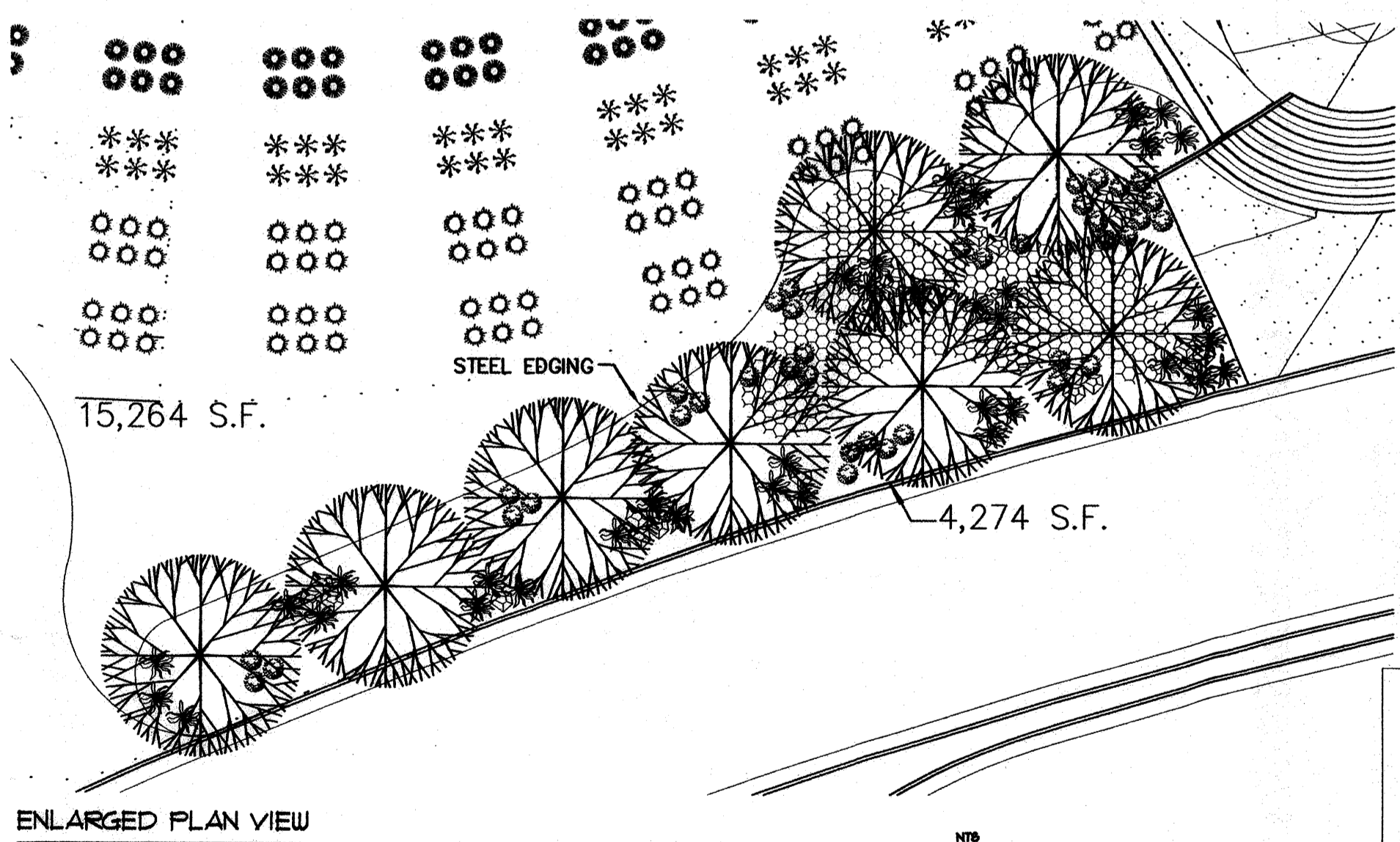
Symbol	Scientific Name Common Name	Size	Remarks	Water Use
Ground cover (1 and 5 gallon)				
⊕	<i>Hedera helix</i> /English Ivy		5' o.c. 20' ht. x 5' spr.	Low +
⊕	Moss Rock Boulders			
⊕	6" Cobble			

- GENERAL LANDSCAPE NOTES**
- Prior to beginning work on the project, the Landscape Contractor shall review the project in the field with the Owner's Representative.
 - If discrepancies occur between the drawings and the site, the Landscape Contractor shall notify the Owner's Representative for clarification prior to proceeding on that portion of work.
 - All planting areas are to have weeds and competitive vegetation removed prior to preparation for planting.
 - All existing plant materials shall be protected during construction. Damaged materials shall be replaced in kind at the Contractor's expense.
 - Plant quantities are provided for Contractor's convenience only, plans shall take precedence.
 - The Owner's Representative shall approve all plant material prior to planting. In addition, the Owner's Representative reserves the right to refuse any plant material deemed unacceptable. The Owner's Representative is to approve any and all substitutions.
 - It is the Landscape Contractor's responsibility to locate all underground utilities prior to commencement of planting operations.
 - Planting areas shall be top dressed with 3" layer of Santa Fe Brown crusher fines unless noted otherwise.

IRRIGATION SYSTEM
Irrigation system standards outlined in the Water Conservation Landscaping and Water Waste Ordinance shall be strictly adhered to. A fully automated irrigation system will be used to irrigate trees, shrub and groundcover planting areas. A temporary spray system will be provided to establish the native seeded areas.

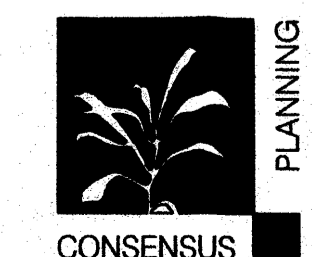
MAINTENANCE RESPONSIBILITY
Maintenance of the landscaping and irrigation system, including those areas within the public ROW, shall be the responsibility of the Lessees.

LANDSCAPE NOTE
The Landscape Plan for this site shall limit the provision of high water use turf to a maximum of 20 percent of the provided landscape area, and shall be in compliance with the Water Conservation Ordinance. Seventy-five percent of the landscape area shall be covered with living plant material, as measured by the mature canopy of the plant.



LANDSCAPE REQUIREMENTS

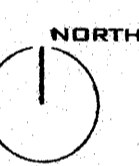
Site Area: 6.07 acres	26,437.5 SF
Building Footprint:	86,214 SF
Total Area:	170,161 SF
Required Landscape %:	15
Landscape Area Required:	26,724 SF
Landscape Area Provided:	(19%) 34,512 SF



LANDSCAPE PLAN
SCALE: 1" = 40'

BUENA VISTA

AVENIDA CÉSAR CHÁVEZ



AS BUILT INFORMATION		BENCH MARK		SURVEY INFORMATION		ARCHITECTS STAMP	
CONTRACTOR	DATE	ALL ELEVATIONS ARE BASED UPON ALBUQUERQUE CONTROL SURVEY MONUMENT: 7-L15	NO.	BY	DATE	NO.	DATE
WORK STAKED BY	DATE						
INSPECTOR'S APPROVAL	DATE						
FIELD VERIFICATION BY	DATE						
DRAWING CORRECTED BY	DATE						
MICRO-FILM INFORMATION	DATE						
RECORDED BY	NO.						

Kells + Craig Architects, Inc. AIA
400 Gold SW Suite 880 Albuquerque, New Mexico 87102 (505) 243-2724

G. DONALD DUDLEY AIA ARCHITECT
SIMMS TOWER STUDIO 850 400 GOLD AVENUE SW ALBUQUERQUE, NEW MEXICO 87102 TEL 505.243.8100 FAX 505.243.8101

CITY OF ALBUQUERQUE DEPARTMENT OF MUNICIPAL DEVELOPMENT

TITLE: SITE DEVELOPMENT PLAN - LANDSCAPE ALBUQUERQUE BICYCLE PARK PH. 1

Design Review Committee	City Engineer Approval	NO./DAY/YR	NO./DAY/YR

City Project No. 7345-90 Zone Map No. L-15-Z Sheet Of

OCTOBER 28, 2005

