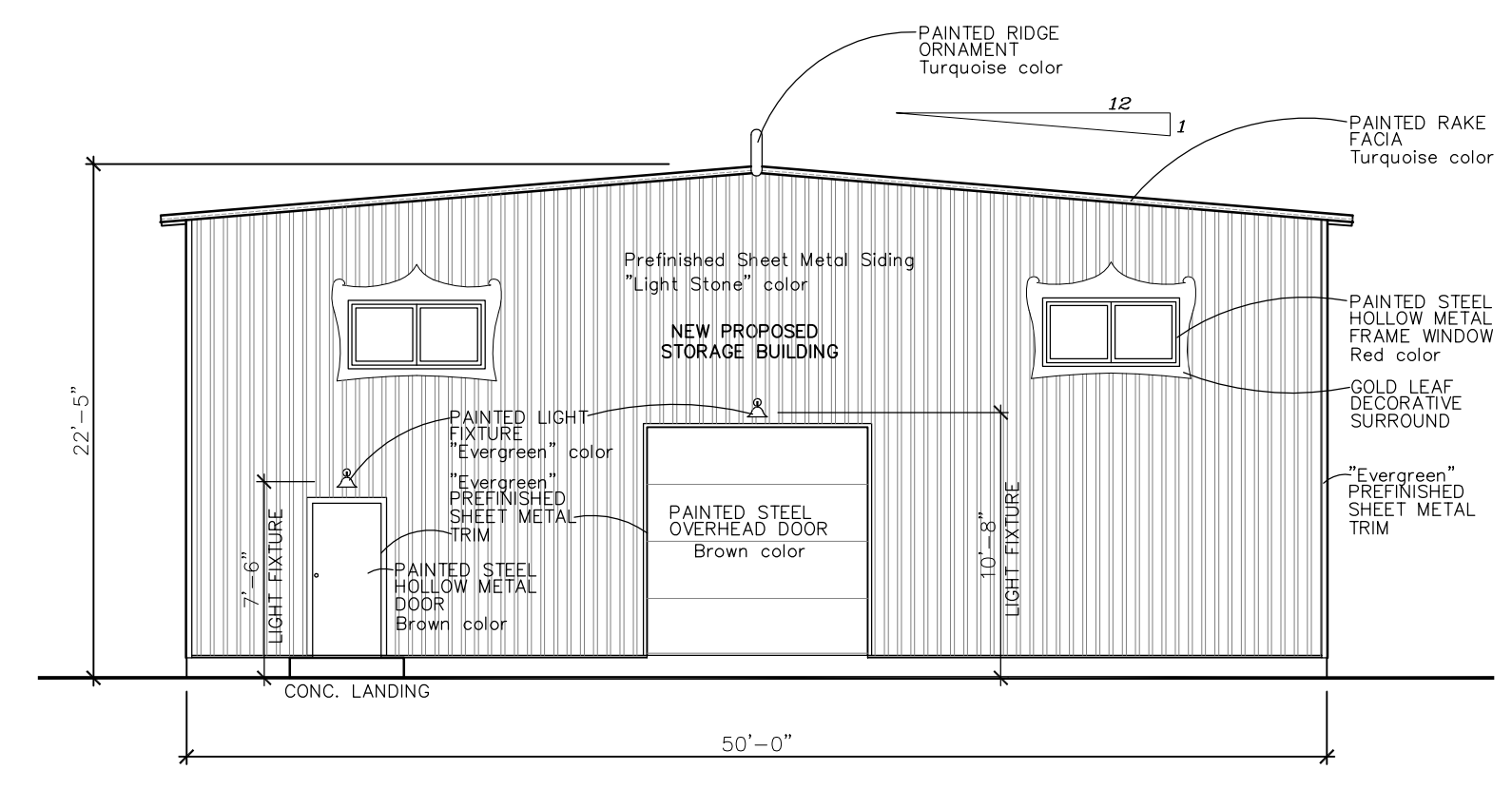
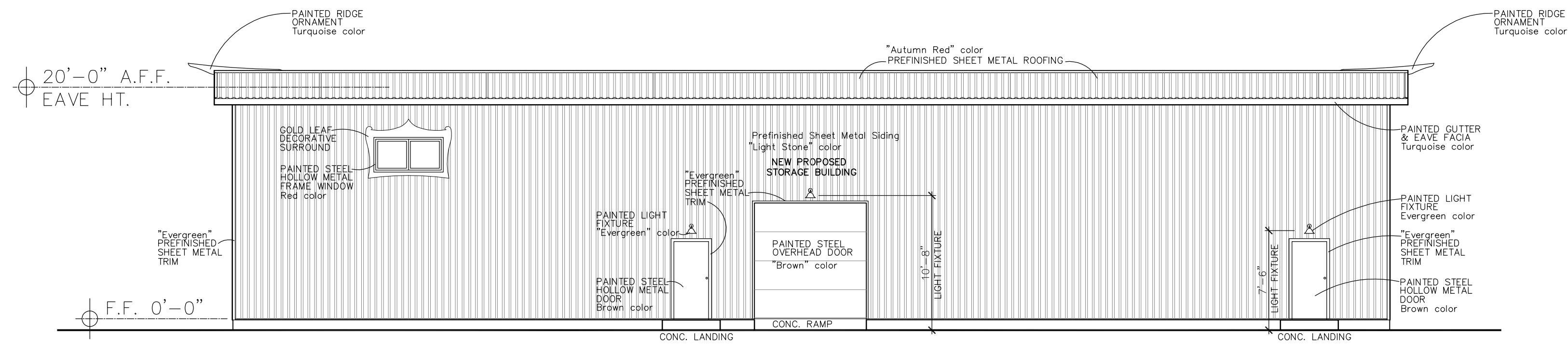


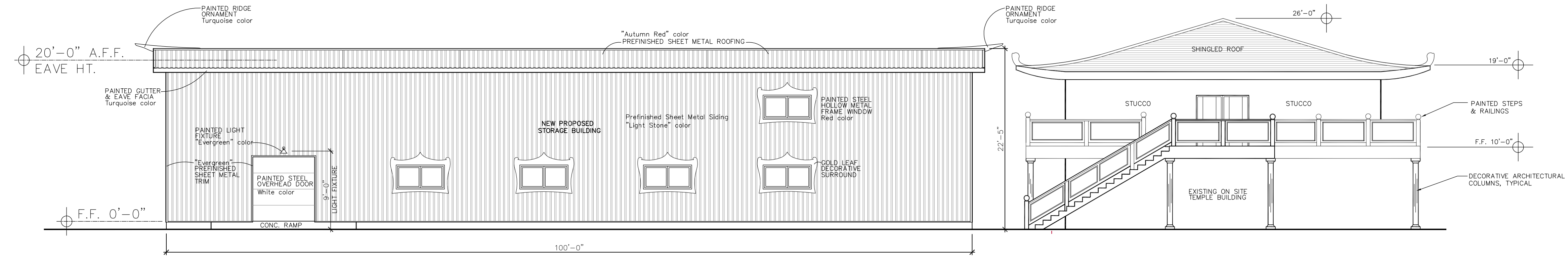
SOUTH ELEVATION
SCALE: 1/8" = 1' - 0"



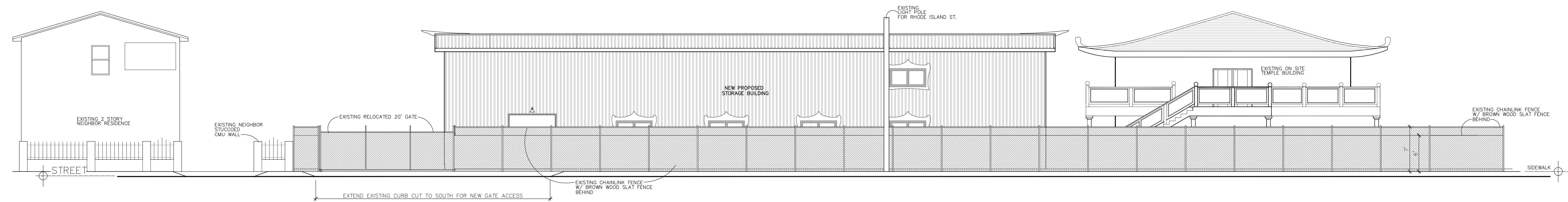
NORTH ELEVATION
SCALE: 1/8" = 1' - 0"



WEST ELEVATION
SCALE: 1/8" = 1' - 0"



EAST ELEVATION
SCALE: 1/8" = 1' - 0"



EAST STREET ELEVATION
SCALE: 1/8" = 1' - 0"

