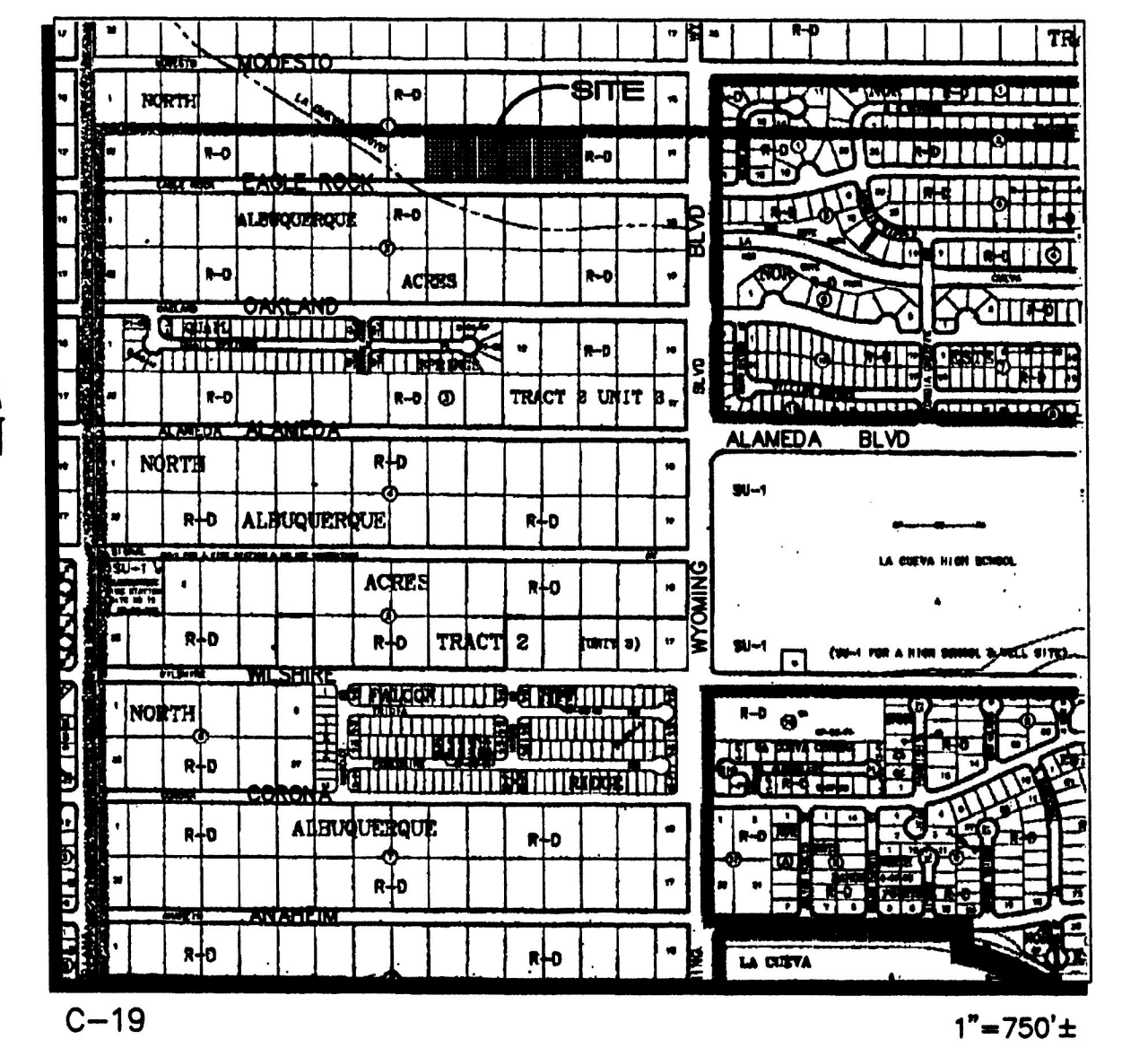
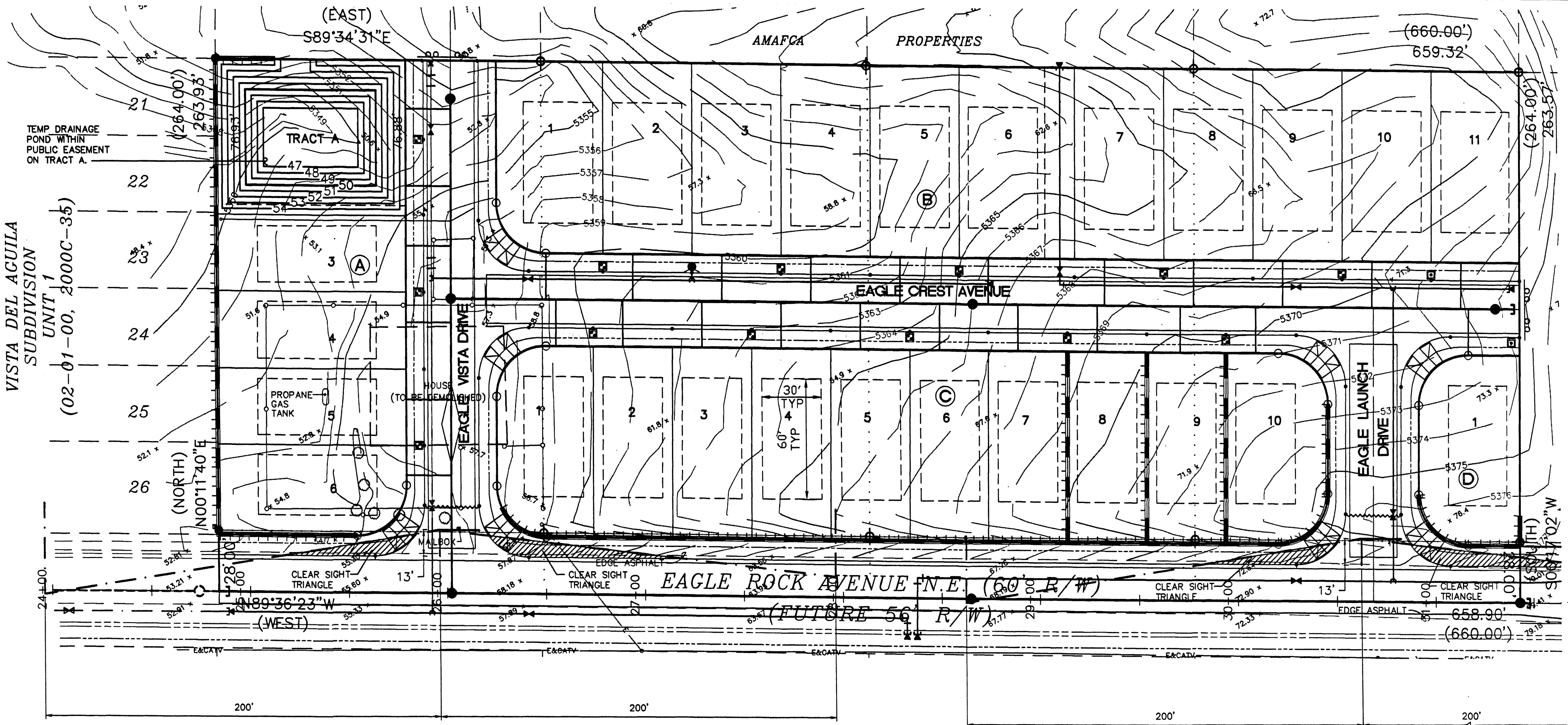


PROJECT 1000503



LEGAL DESCRIPTION: LOTS 20 THROUGH 23, BLOCK 1, TRACT 2, UNIT 3, NORTH ALBUQUERQUE ACRES.  
 AREA: 3.9908 ACRES±  
 SCALE: 1"=30'  
 02 DRB - 01267

PROJECT NUMBER: 1000503  
 This plan is consistent with the LA CUEVA SECTOR DEVELOPMENT PLAN approval by the Environmental Planning Commission (EPC) on

**SITE DEVELOPMENT PLAN**

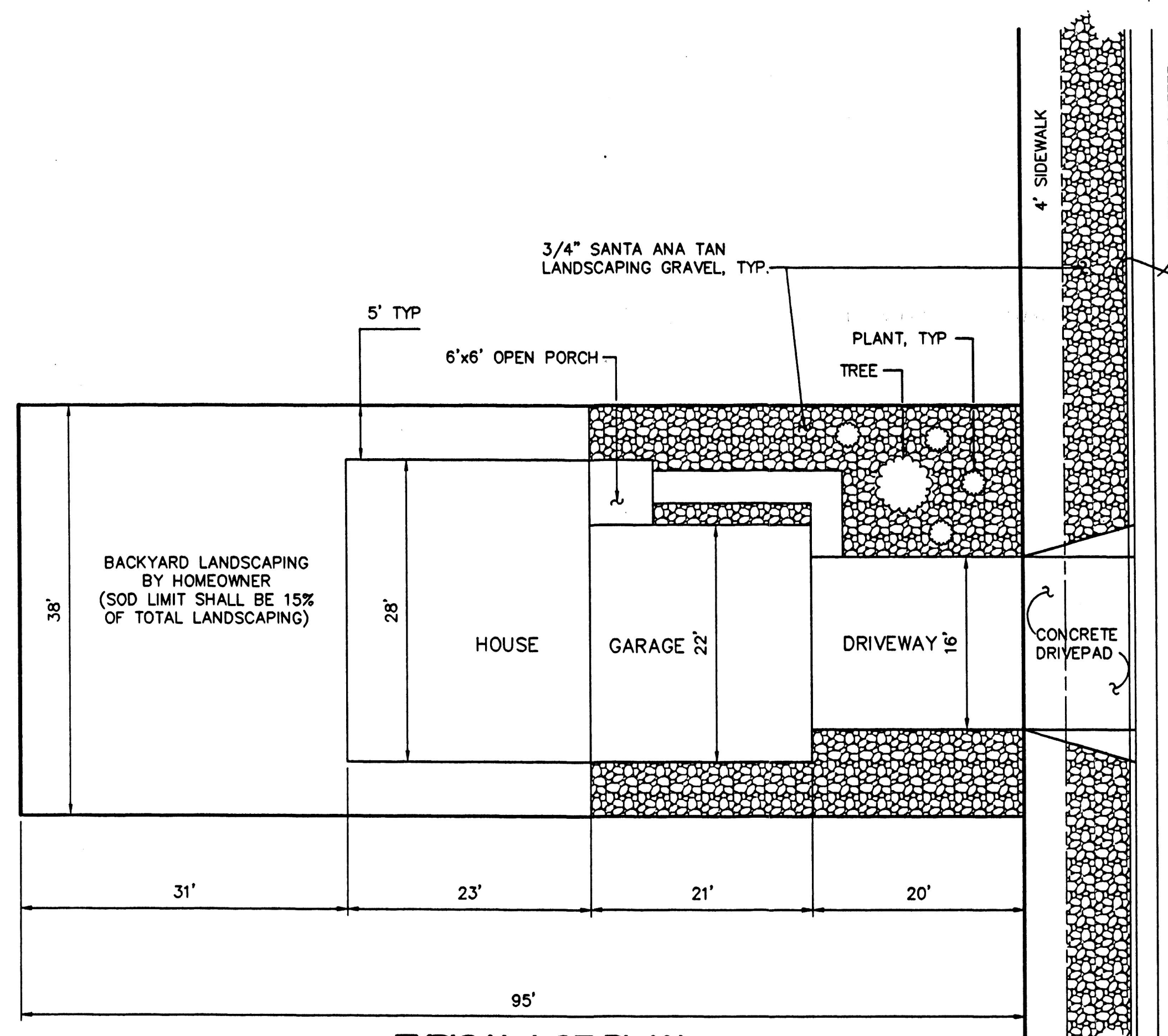
*Mike [Signature]* 8/2/02  
 Traffic Engineer/Transportation Division Date

*Christina Sandoval* 8/19/02  
 Design and Development - GIS Parks & Recreation Dept. Date

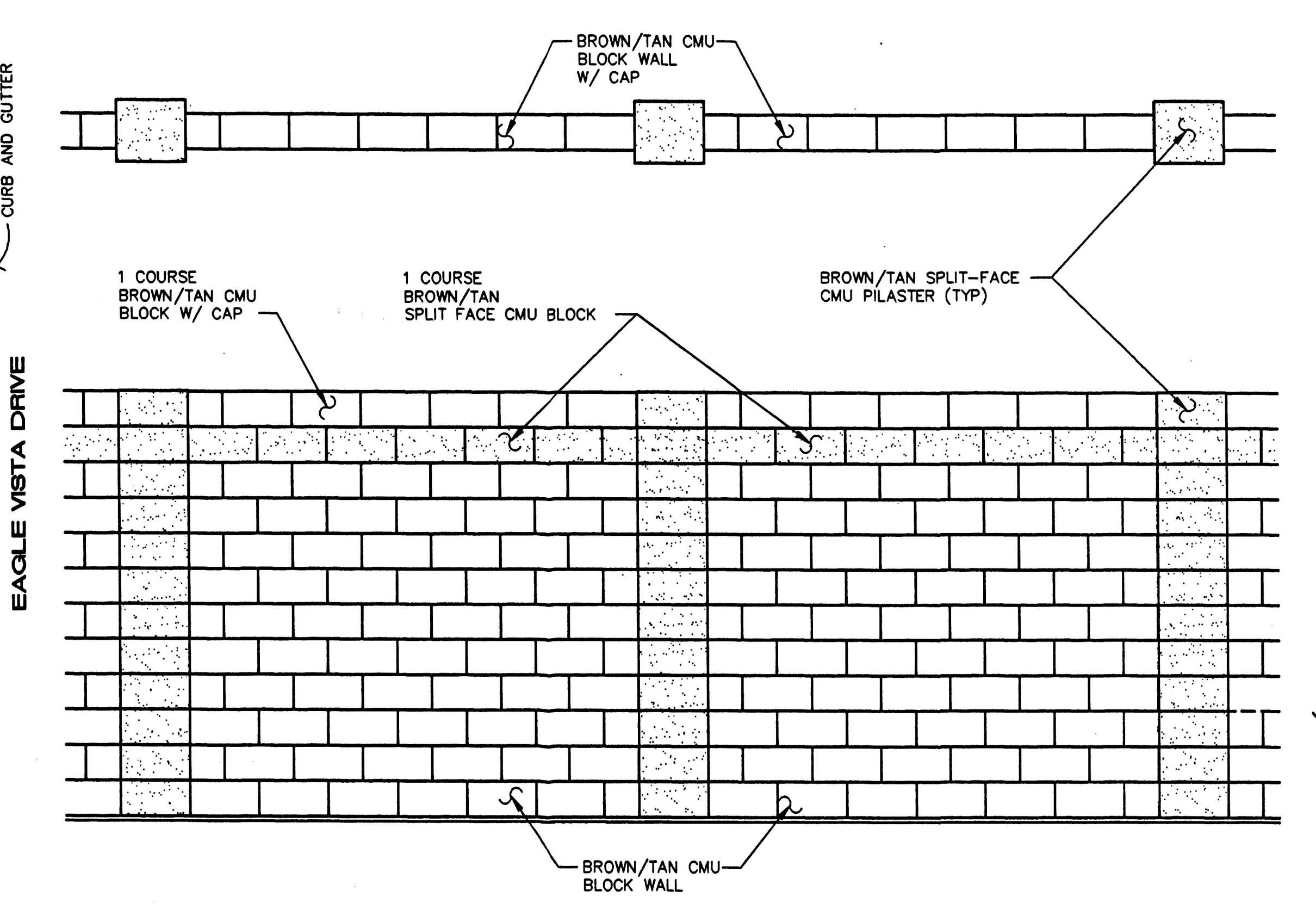
*Roger [Signature]* 8/16/02  
 Public Works, Water Utilities Division Date

*Bradley B. Bigham* 8/19/02  
 City Engineer, Engineering Division/AMAFCA Date

APPROVAL AND CONDITIONAL ACCEPTANCE: as specified by the Development Process Manual.  
*Janet [Signature]* 8/22/02  
 City Planner, Albuquerque, NM Date

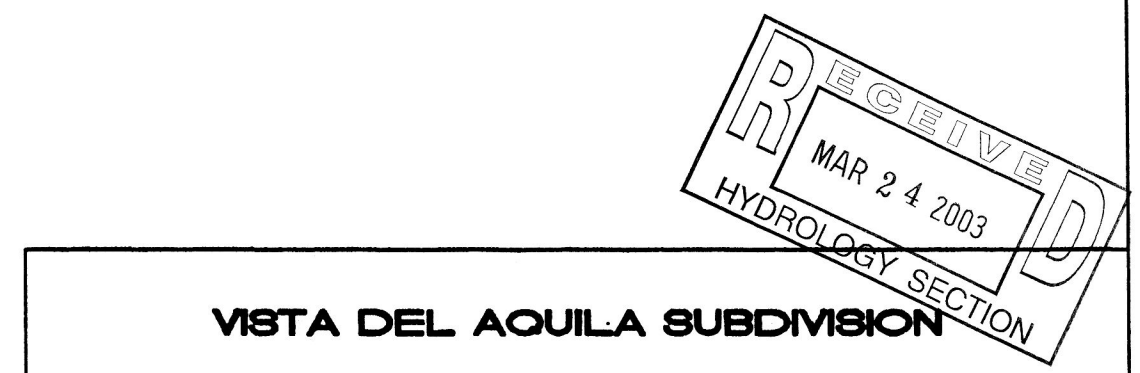


TYPICAL LOT PLAN  
 SCALE: 1"=10'-0"



EAGLE ROCK FENCE DETAIL  
 SCALE: 1"=2'-0"

- LEGEND**
- 5200 — EXISTING CONTOUR
  - 52 — PROPOSED CONTOUR
  - ◆ 78.3 PROPOSED SPOT ELEVATION
  - FLOW ARROW
  - PG=6881.0 PAD GRADE ELEVATION
  - SIDEWALK CULVERT
  - TC=81.95 TOP OF CURB ELEVATION  
 FL=81.45 FLOWLINE
  - ~~~~~ WATER BAR
  - PROPOSED RETAINING WALL
  - TW=52.0 TOP OF WALL ELEVATION  
 BW=50.0 BOTTOM OF WALL ELEVATION
  - INV=72.5 INVERT ELEVATION
  - STORM DRAIN MANHOLE
  - BASIN (A) BASIN ID
  - BASIN BOUNDARY
  - EROSION CONTROL BERM



VISTA DEL AGUILA SUBDIVISION  
 UNIT 2  
**SITE DEVELOPMENT PLAN FOR SUBDIVISION**

ISAACSON & ARFMAN, P.A.  
 Consulting Engineering Associates  
 128 Monroe Street N.E.  
 Albuquerque, New Mexico

096SDF.DWGnav 08/21/02  
**SHEET 1 OF 1**