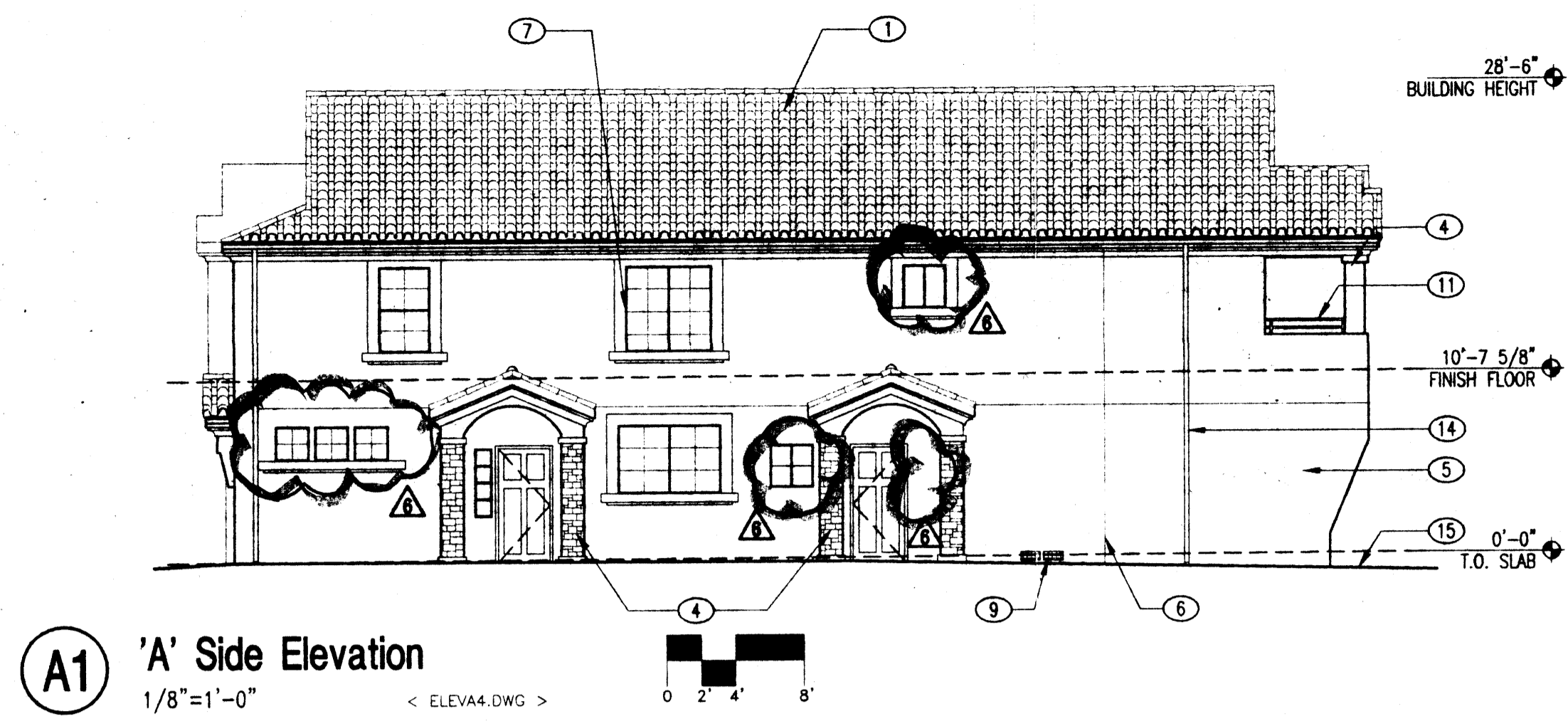


**General Notes**

1. ALL STUCCO AND PAINTED STUCCO COLORS TO BE RETURNED TO INSIDE CORNERS TYP. UNLESS OTHERWISE NOTED. ANY UNUSUAL CONDITIONS TO BE CONFIRMED WITH THE ARCHITECT PRIOR TO FINAL COAT APPLICATION.
2. DETAIL REFERENCES ARE TO BE USED FOR SIMILAR CONDITIONS WHETHER REFERENCED OR NOT.

**Keyed Notes**

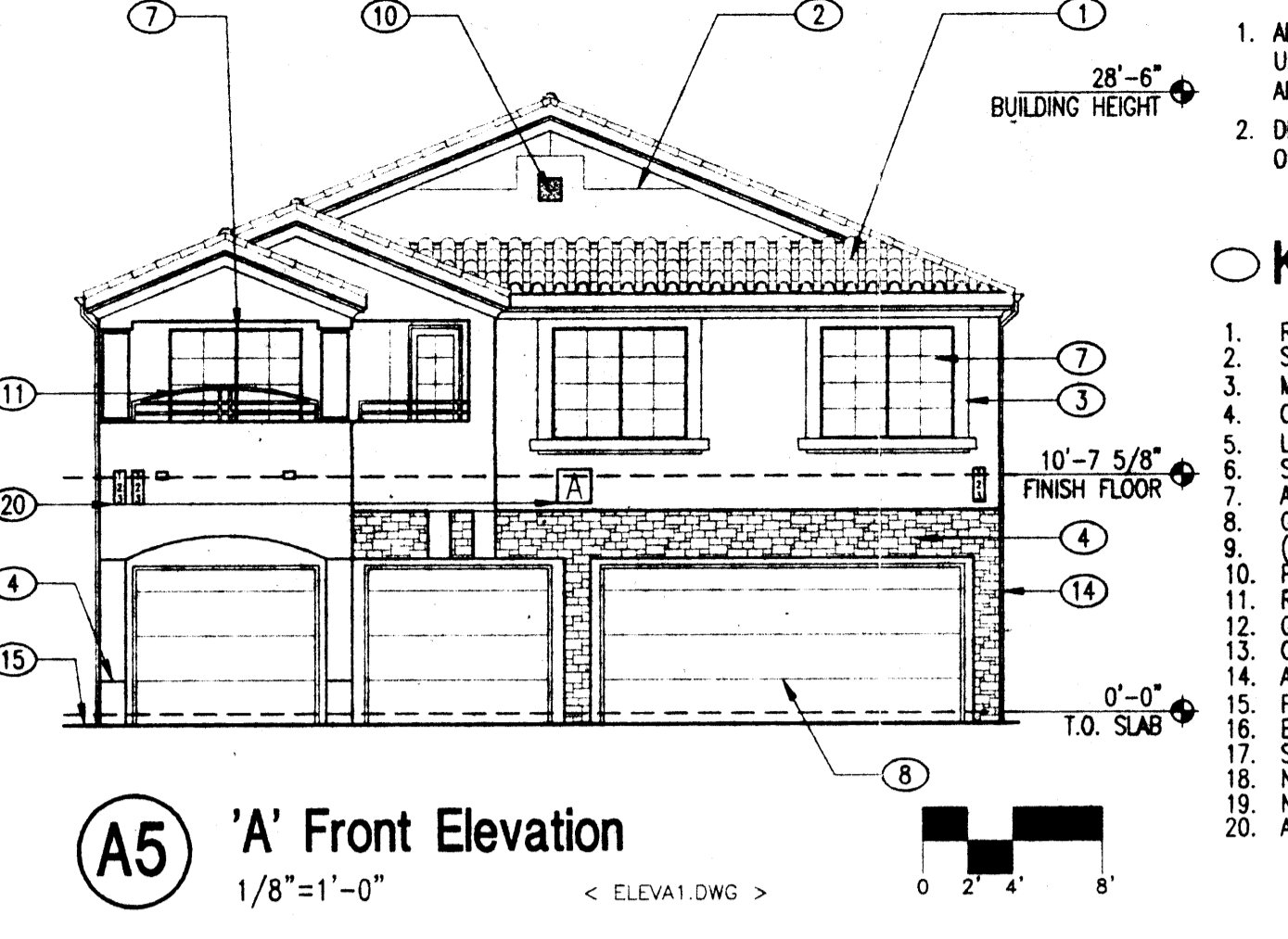
1. RED TILE TO BE SELECTED BY OWNER
2. STUCCO OVER 3/4" PLYWOOD FURR OUT, REFER DTL. B3/A108.
3. CULTURED STONE PER OWNER
4. LIGHT TAN EXTERIOR CEMENT STUCCO
5. STUCCO CONTROL JOINT, REFER DTL. A2/A108.
6. ALUMINUM FRAME WINDOWS AND SLIDING DOORS.
7. GARAGE DOOR, STEEL SECTIONAL.
8. (2) 14"x16" GARAGE VENTS.
9. PAINTED STUCCO BUTTON.
10. RAILING OF PAINTED STEEL.
11. GALVANIZED METAL ATTIC VENT, SIZE VARIES AS NOTED.
12. OPTIONAL PORCH COVER, SEE DETAIL E4.
13. ALUMINUM GUTTER AND DOWNSPOUT.
14. FINISH GRADE, SLOPE AWAY FROM BUILDING, MIN. 2% SLOPE.
15. ELECTRIC METER, REFER TO CIVIL DRAWINGS.
16. SKYLIGHT.
17. NOT USED
18. NOT USED
19. NOT USED
20. ADDRESS PLAQUES.



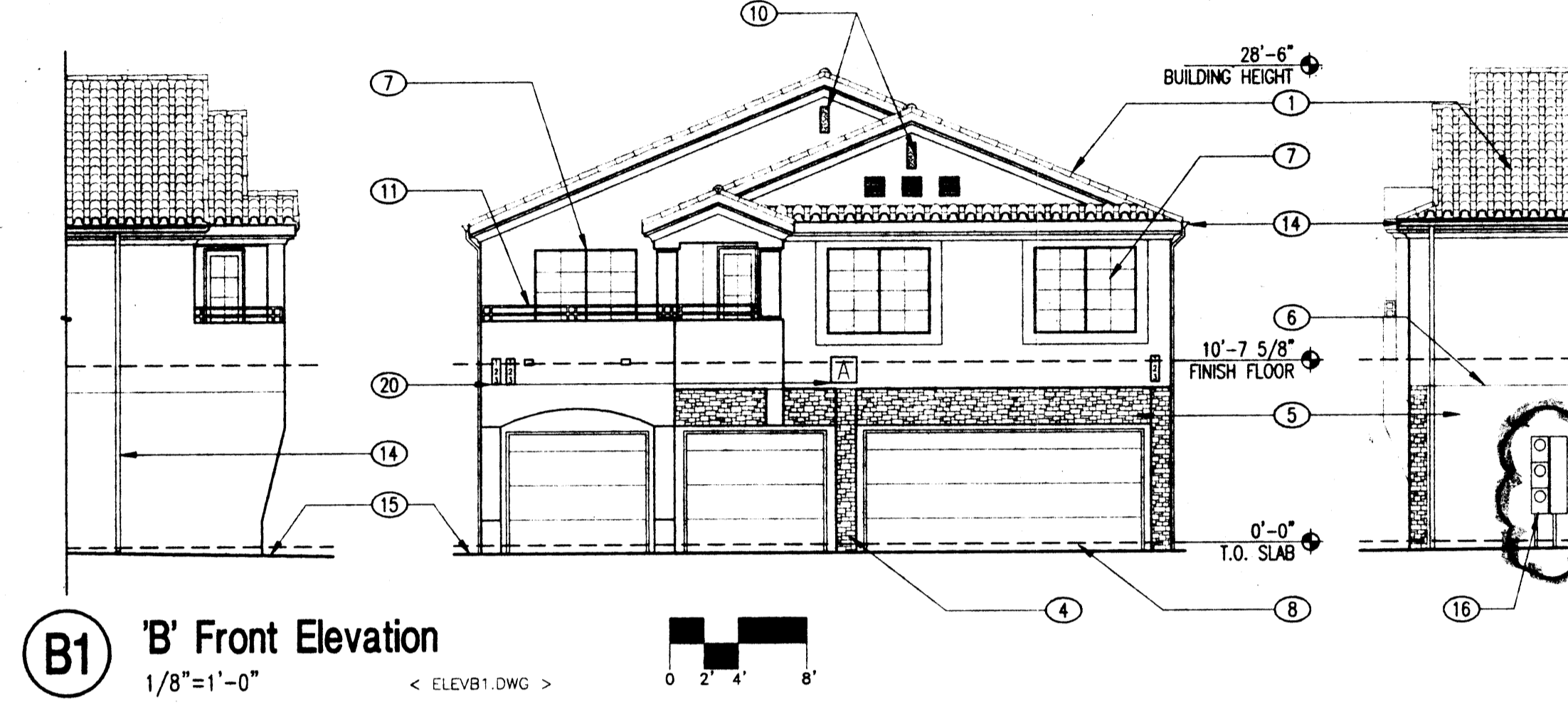
**A1 'A' Side Elevation**  
1/8"=1'-0"  
< ELEV.A1.DWG >



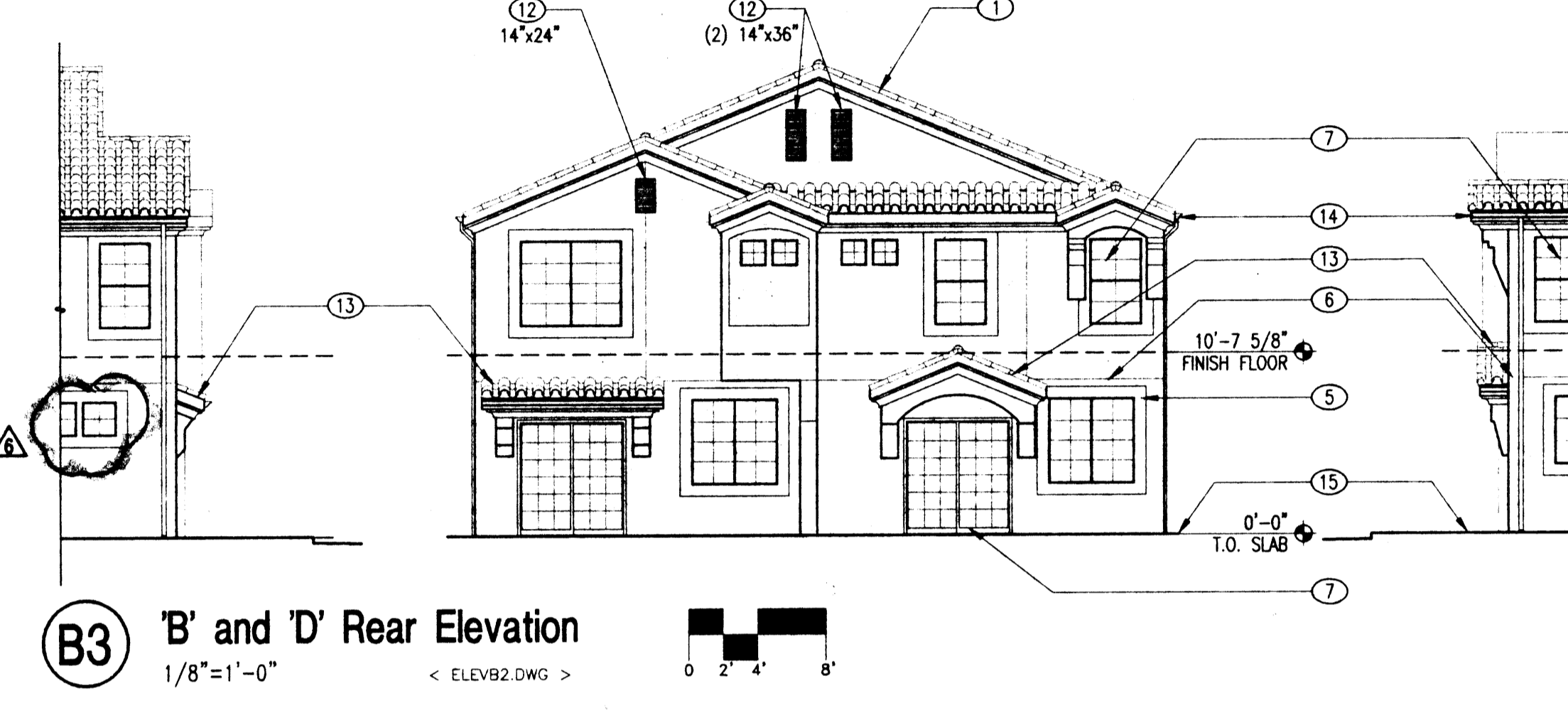
**A3 'A' Side Elevation**  
1/8"=1'-0"  
< ELEV.A3.DWG >



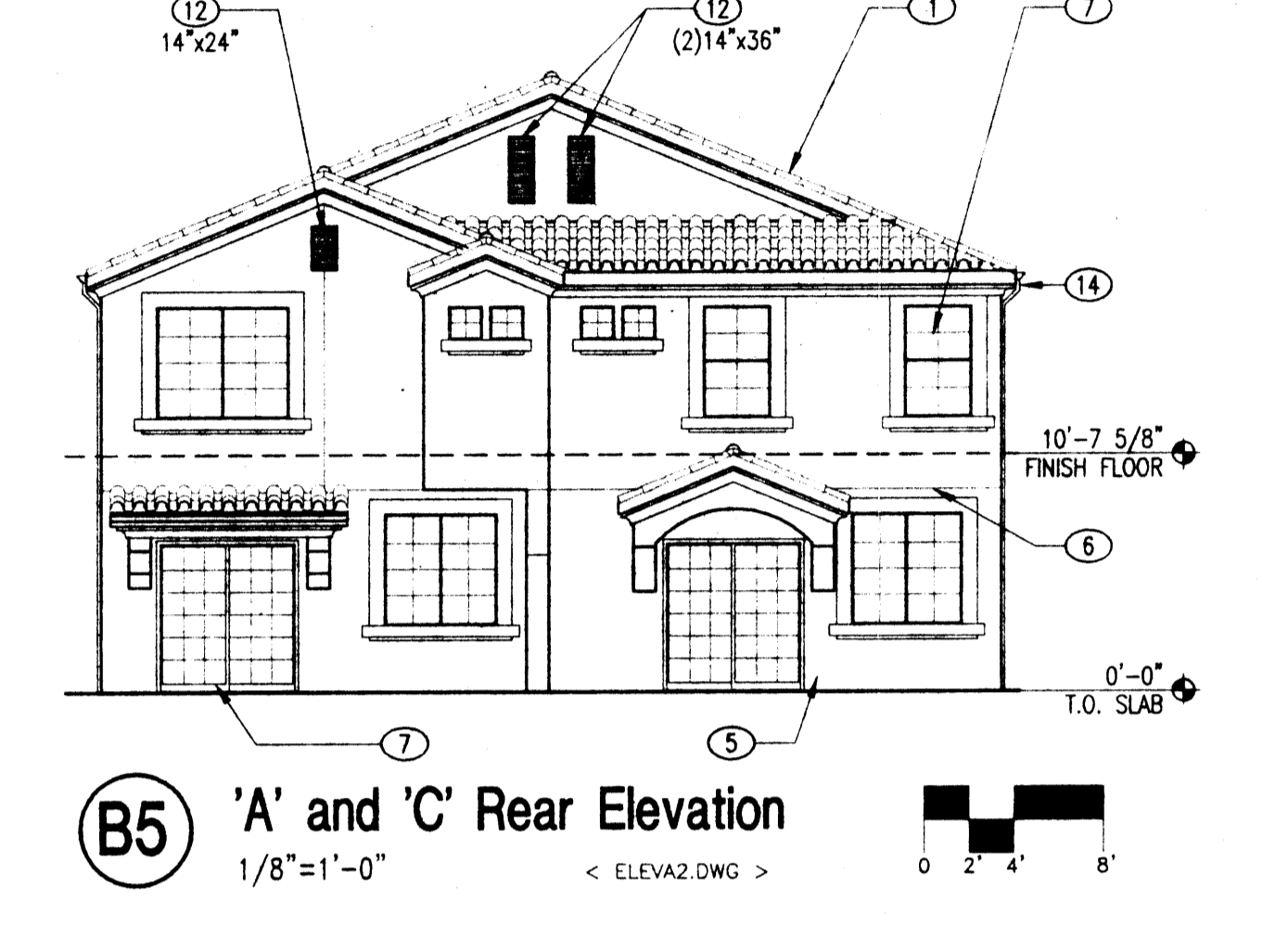
**A5 'A' Front Elevation**  
1/8"=1'-0"  
< ELEV.A5.DWG >



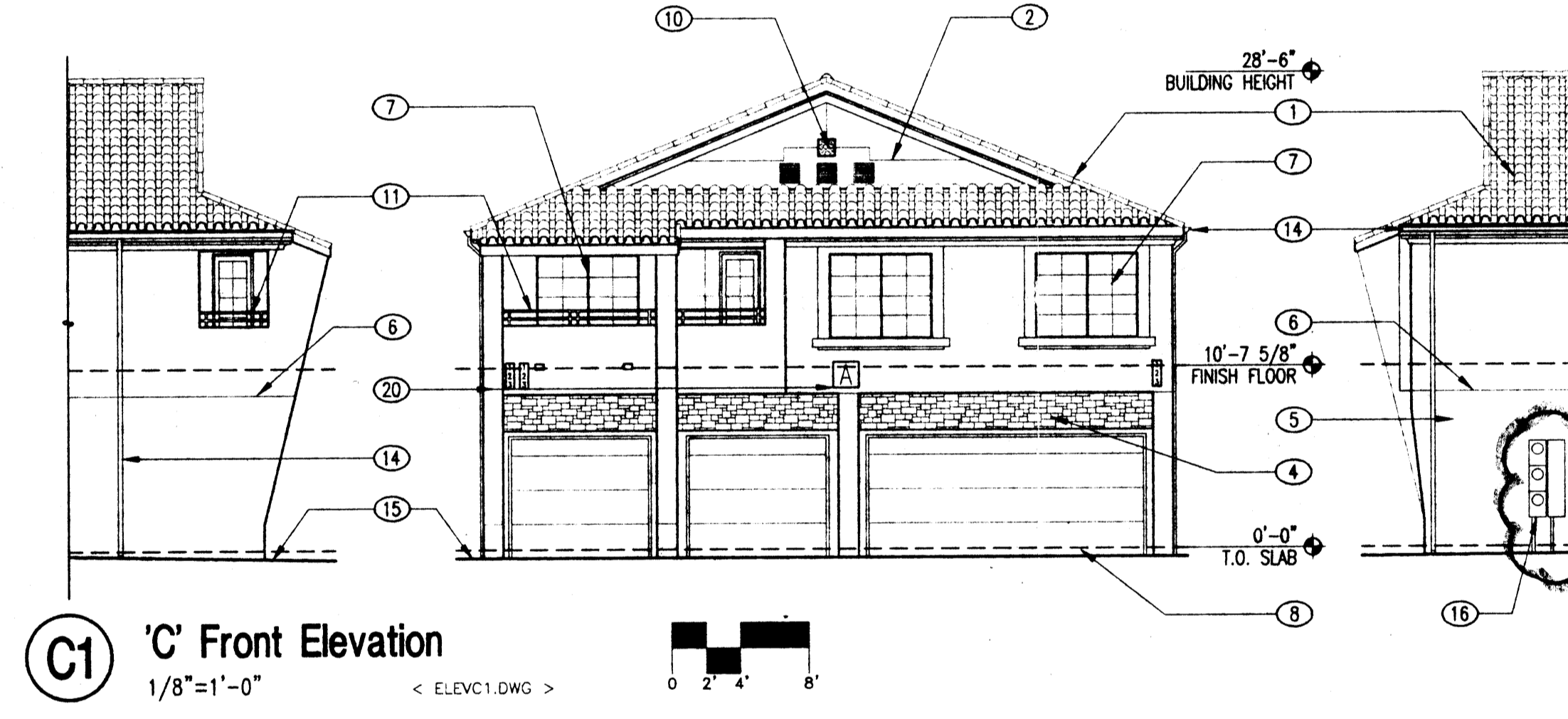
**B1 'B' Front Elevation**  
1/8"=1'-0"  
< ELEV.B1.DWG >



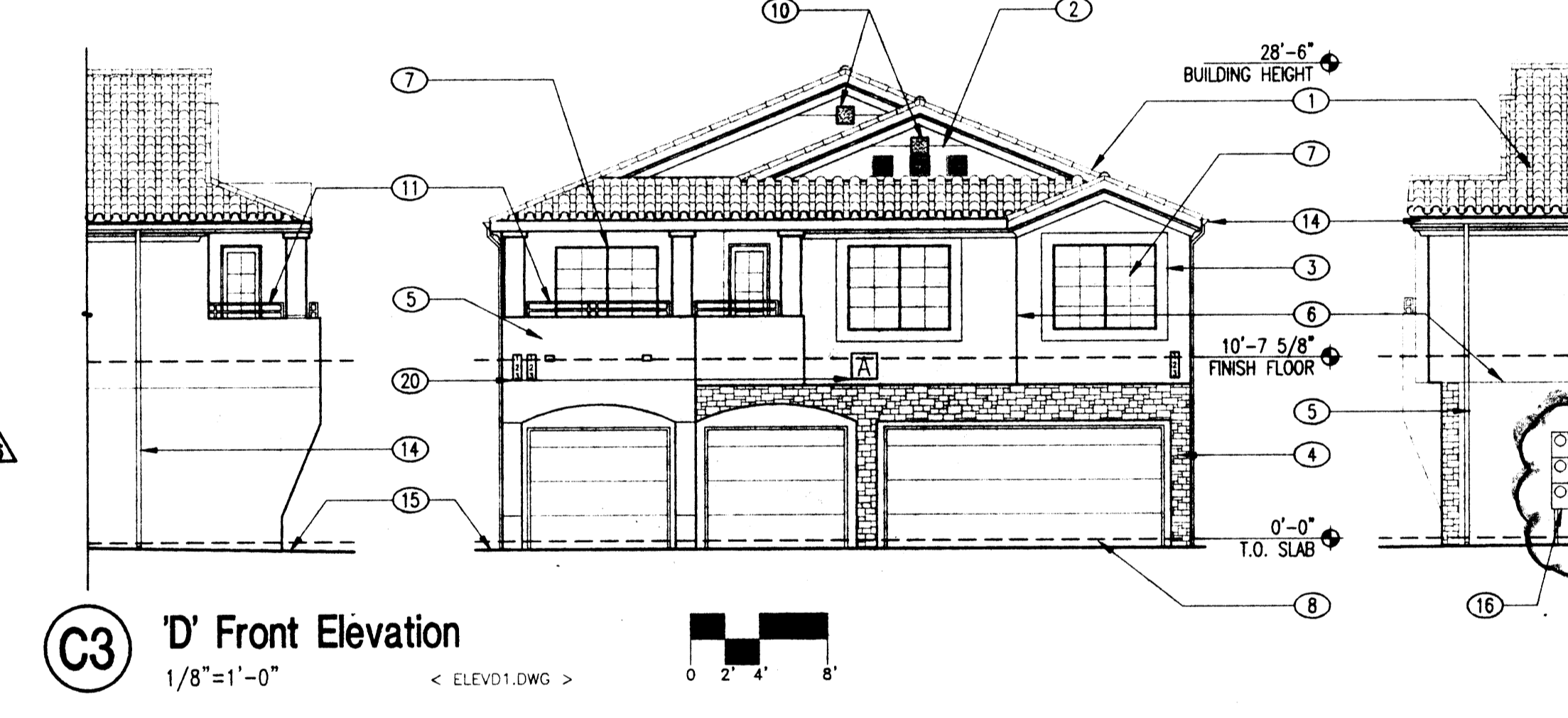
**B3 'B' and 'D' Rear Elevation**  
1/8"=1'-0"  
< ELEV.B3.DWG >



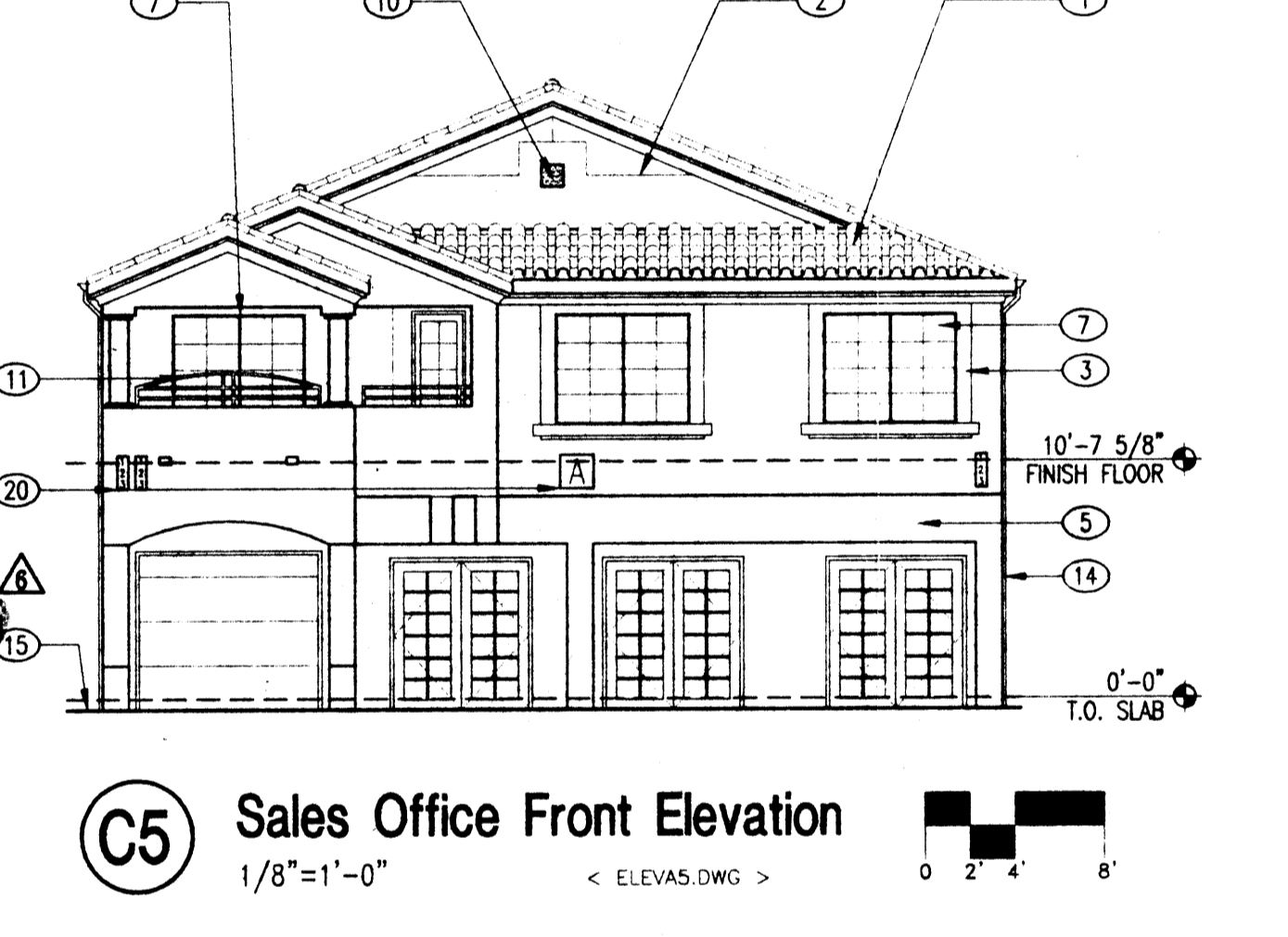
**B5 'A' and 'C' Rear Elevation**  
1/8"=1'-0"  
< ELEV.B5.DWG >



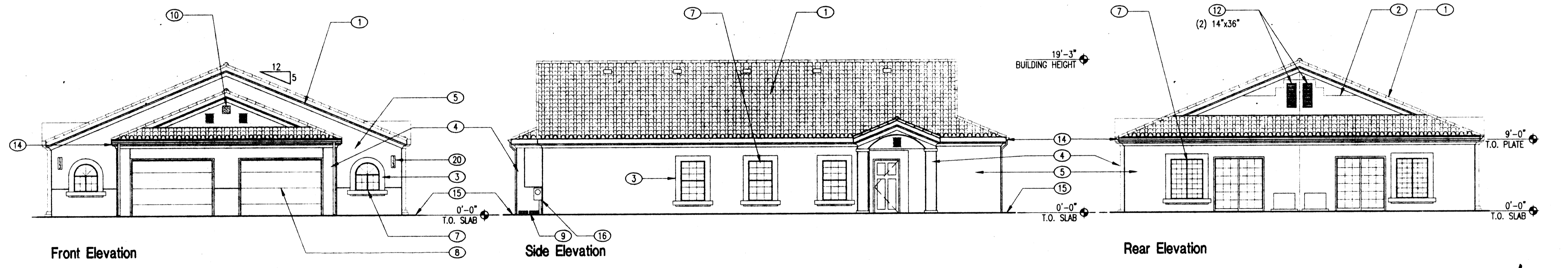
**C1 'C' Front Elevation**  
1/8"=1'-0"  
< ELEV.C1.DWG >



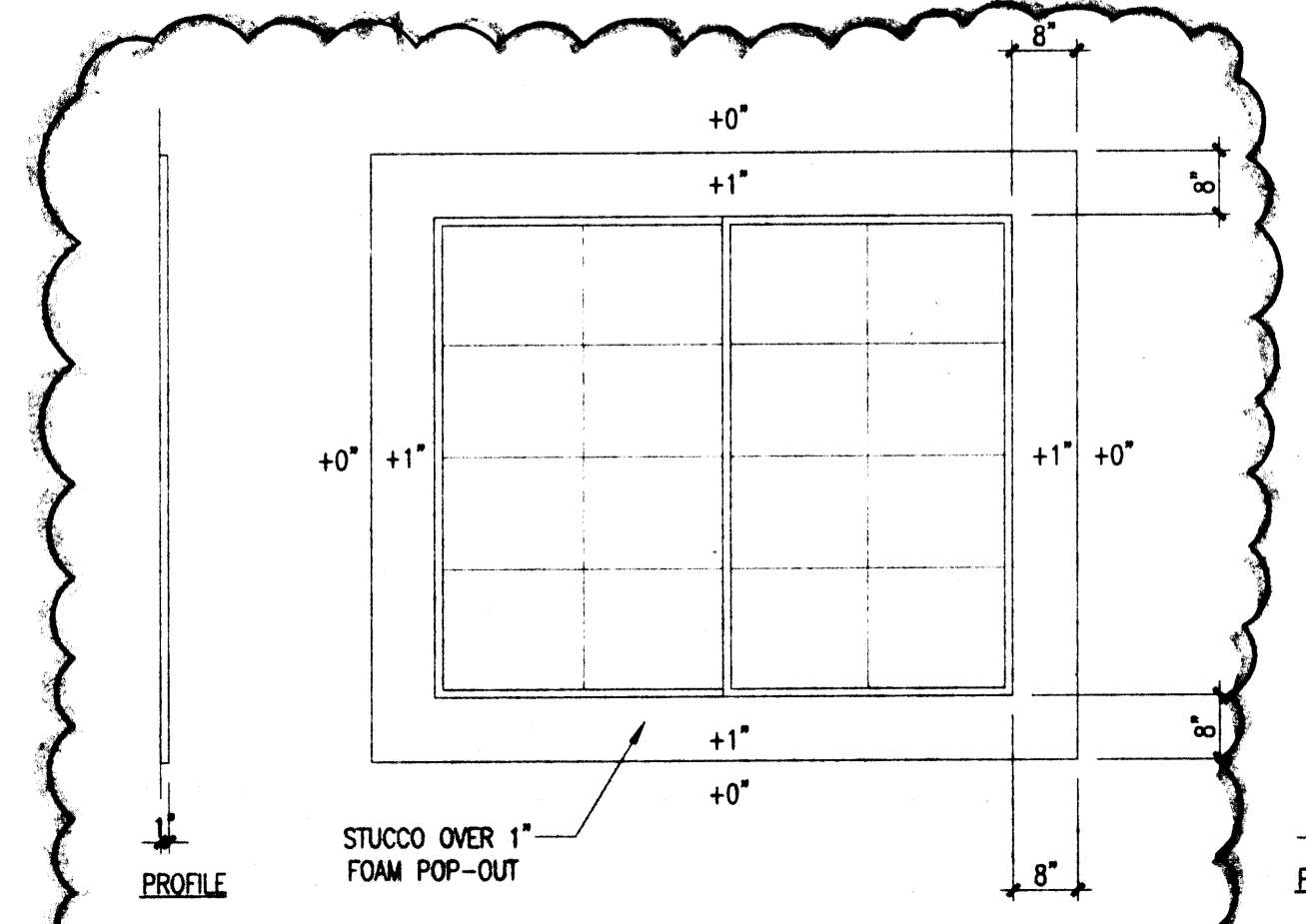
**C3 'D' Front Elevation**  
1/8"=1'-0"  
< ELEV.C3.DWG >



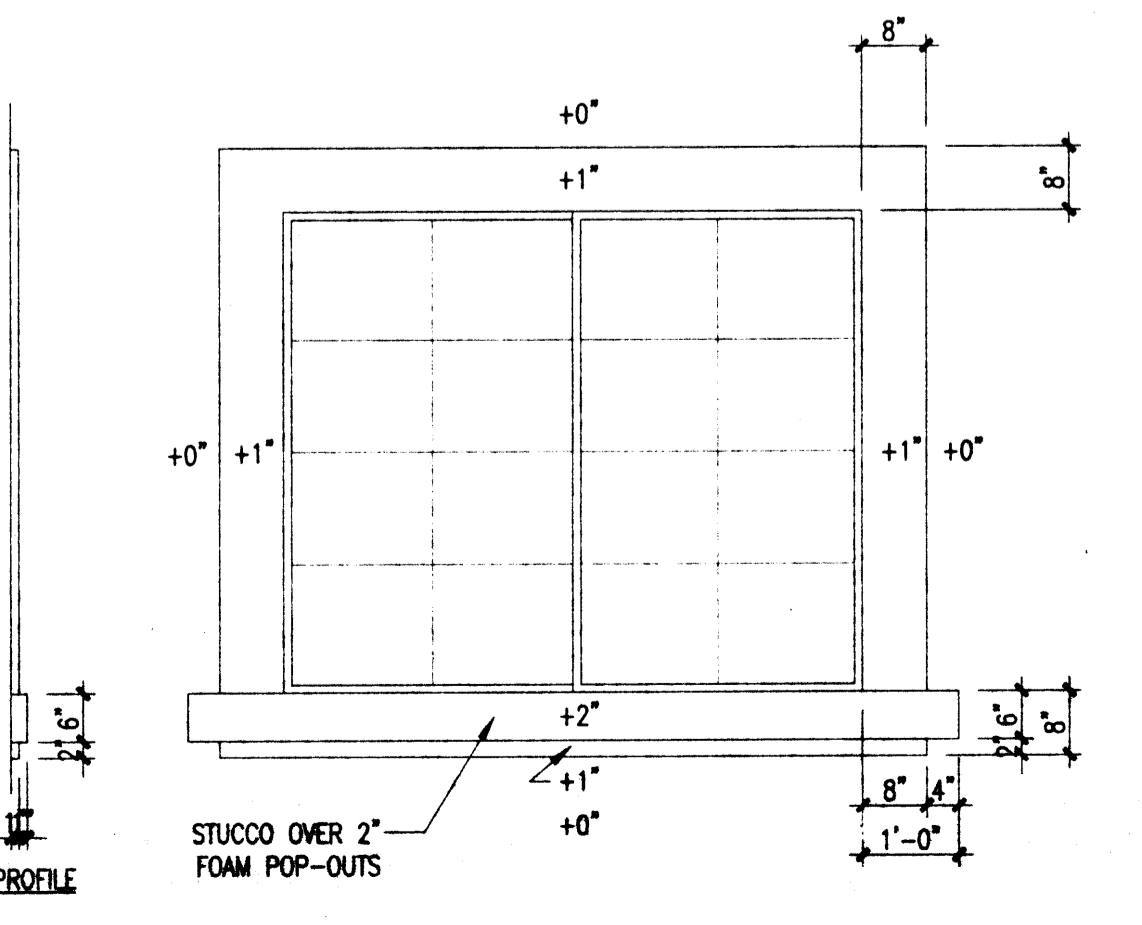
**C5 Sales Office Front Elevation**  
1/8"=1'-0"  
< ELEV.C5.DWG >



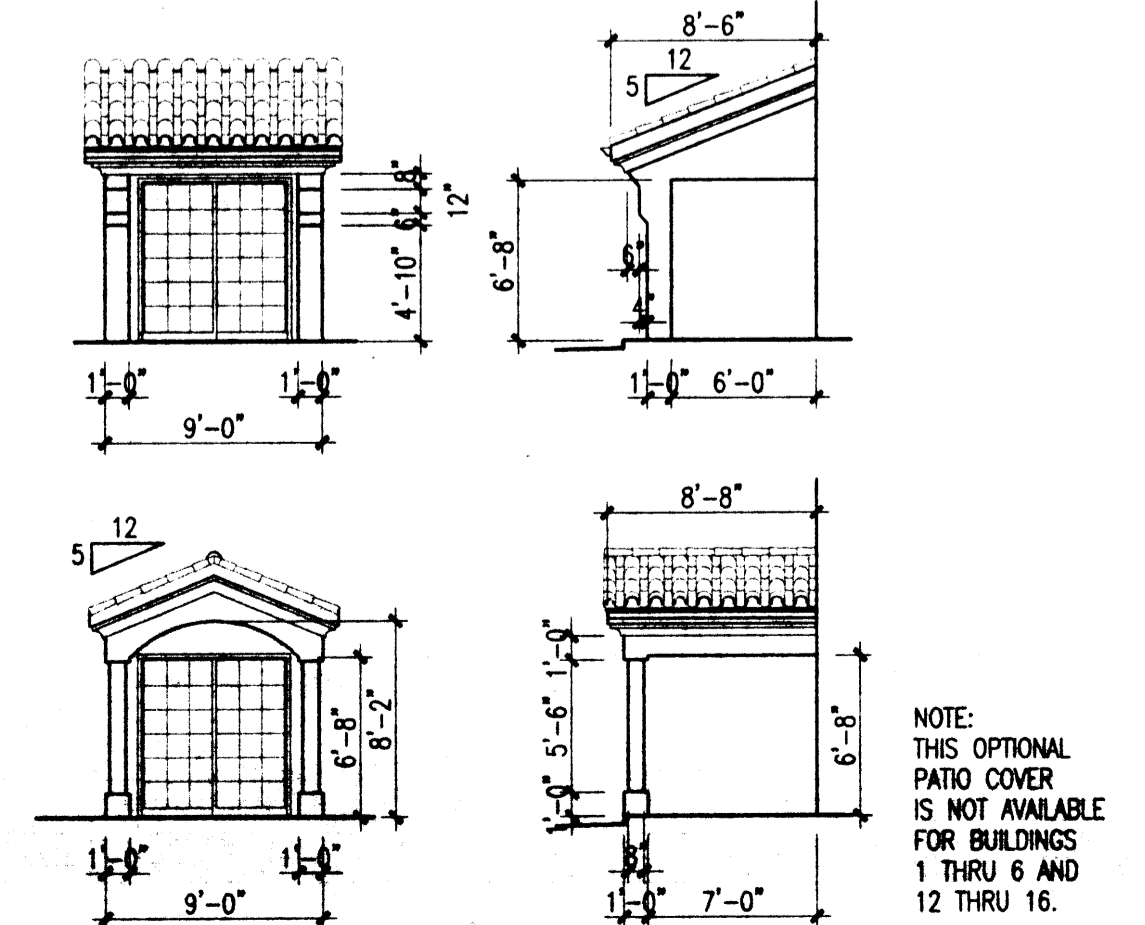
**D2 Elevations - Handicap Unit**  
1/8"=1'-0"  
< ELEV.D2.DWG >



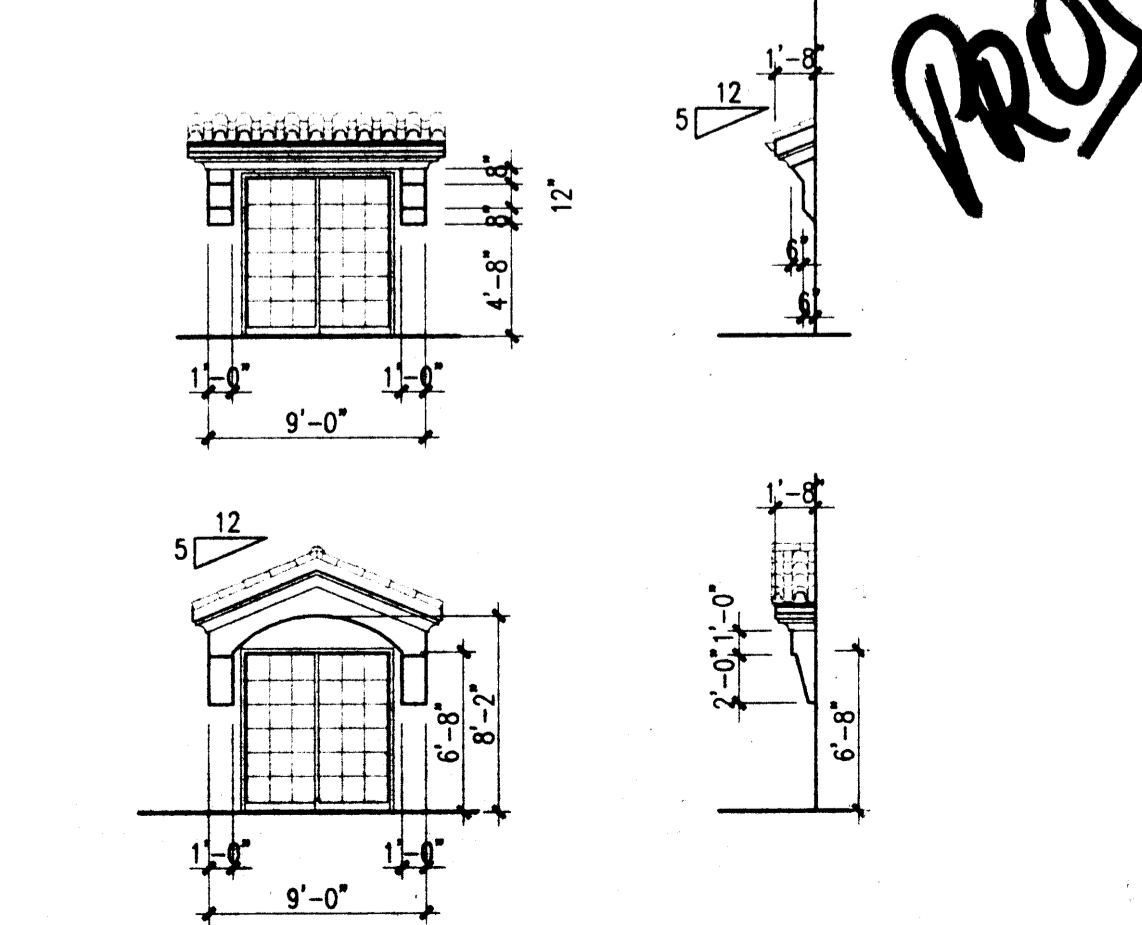
**E2 Stucco Pop-outs**  
1/2"=1'-0"  
< SKETCH1.DWG >



**E3 Stucco Pop-outs**  
1/2"=1'-0"  
< SKETCH1.DWG >



**E4 Optional Patio Cover**  
1/8"=1'-0"  
< ELEV.B2-DETAIL.DWG >



**E5 Patio Cover**  
1/8"=1'-0"  
< ELEV.B2-DETAIL.DWG >

**PROJ 1000534**

ADMINISTRATIVE  
DEVELOPMENT PLAN AMENDMENT  
FILE NO. AA-0211000534  
DATE 6/7/02  
PLANNING DIRECTOR

- revisions
- 9/4/01 OWNER CHANGES
  - 12/6/01 OWNER CHANGES
  - 1/30/02 OWNER CHANGES
  - 5/17/02 ZONING CHANGES

drawn by **PC**  
reviewed by **RW**  
date **2-8-02**  
project no. **98098**  
drawing name

Elevations