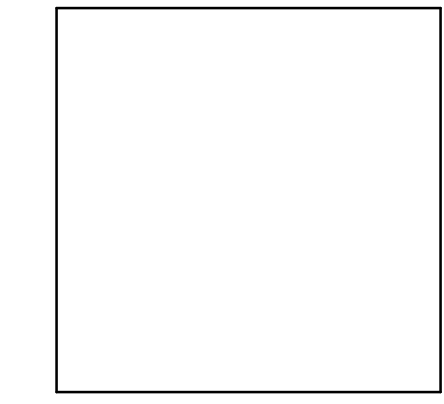


SEARER, ROBBINS & STEPHENS, INC. ARCHITECTURE INTERIORS PLANNING 1730 EAST NORTHERN AVENUE, SUITE 124, PHOENIX, ARIZONA 85020 (602) 277-1187 FAX (602) 277-9879

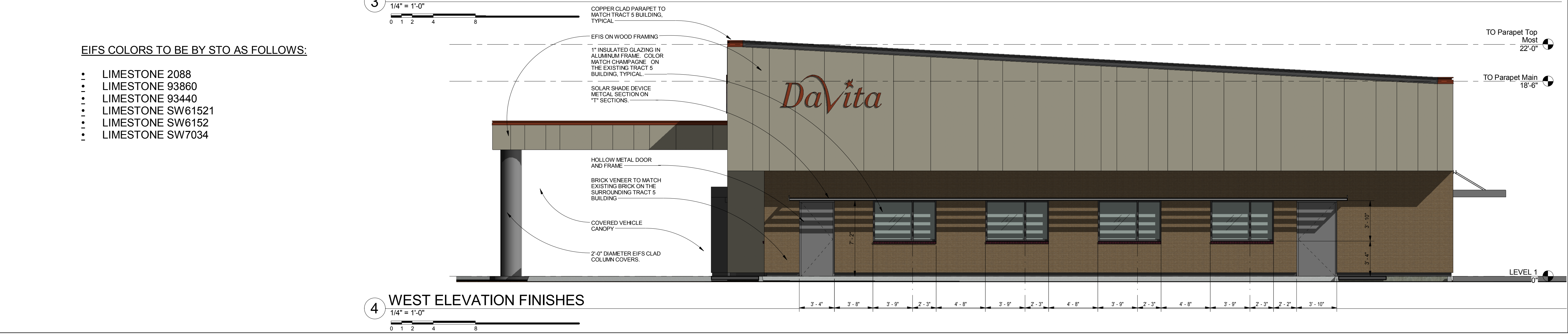
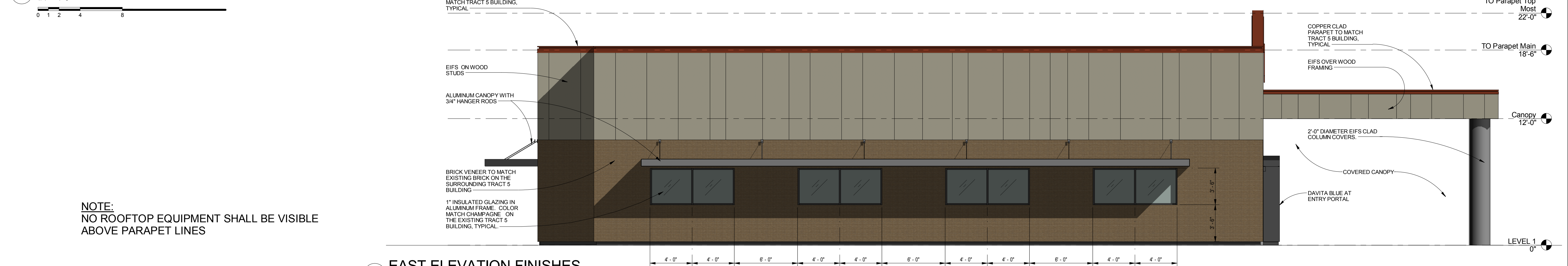
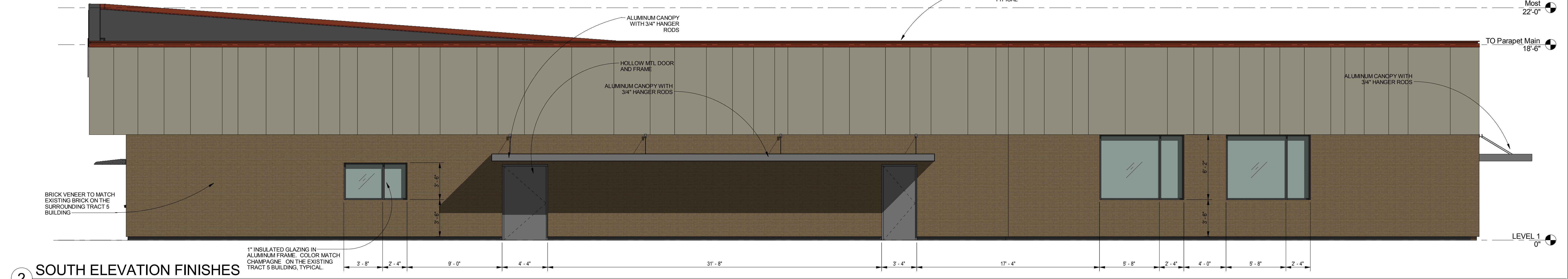
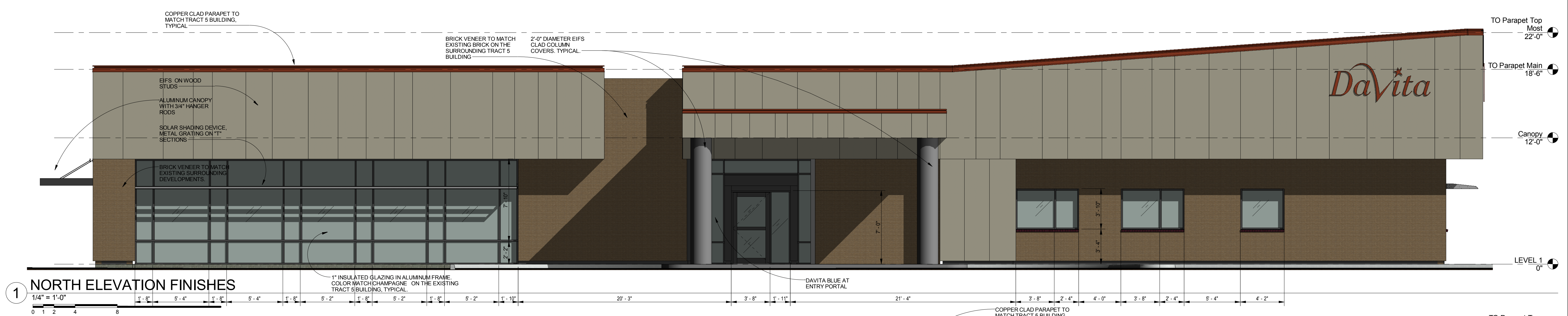
DRAWN DBR CHECKED DBR JOB NO. 1642 DATE 8/18/16

REVISIONS



Davita. Albuquerque II Dialysis Center at 10605 Cooper Avenue, NE Albuquerque, NM

SHEET NO. PR-101



NOTE:
NO ROOFTOP EQUIPMENT SHALL BE VISIBLE ABOVE PARAPET LINES

EIFS COLORS TO BE BY STO AS FOLLOWS:

- LIMESTONE 2088
- LIMESTONE 93860
- LIMESTONE 93440
- LIMESTONE SW61521
- LIMESTONE SW6152
- LIMESTONE SW7034