

GENERAL NOTES

A.

PARKING REQUIREMENTS:

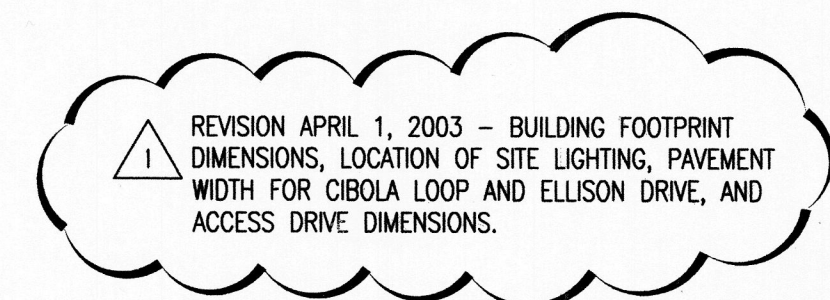
NEW MEETING ROOM  
8 Parking Places Required; 8 Provided  
(1 SPACE FOR EACH FOUR SEATS Parking Requirements: Public Assembly Place per C.O.A. Zoning Code)  
CREW PARKING  
10 Parking Places Required; 12 Provided

BICYCLE PARKING  
2 Spaces required; Bike Rack for 5 bikes provided.

SITE LIGHTING:

All Pole mounted lighting shall not exceed 20'.

Lighting sources shall be concealed, shielded, or directed toward and ambient surface to eliminate the potential for light pollution or spillage to adjacent properties.



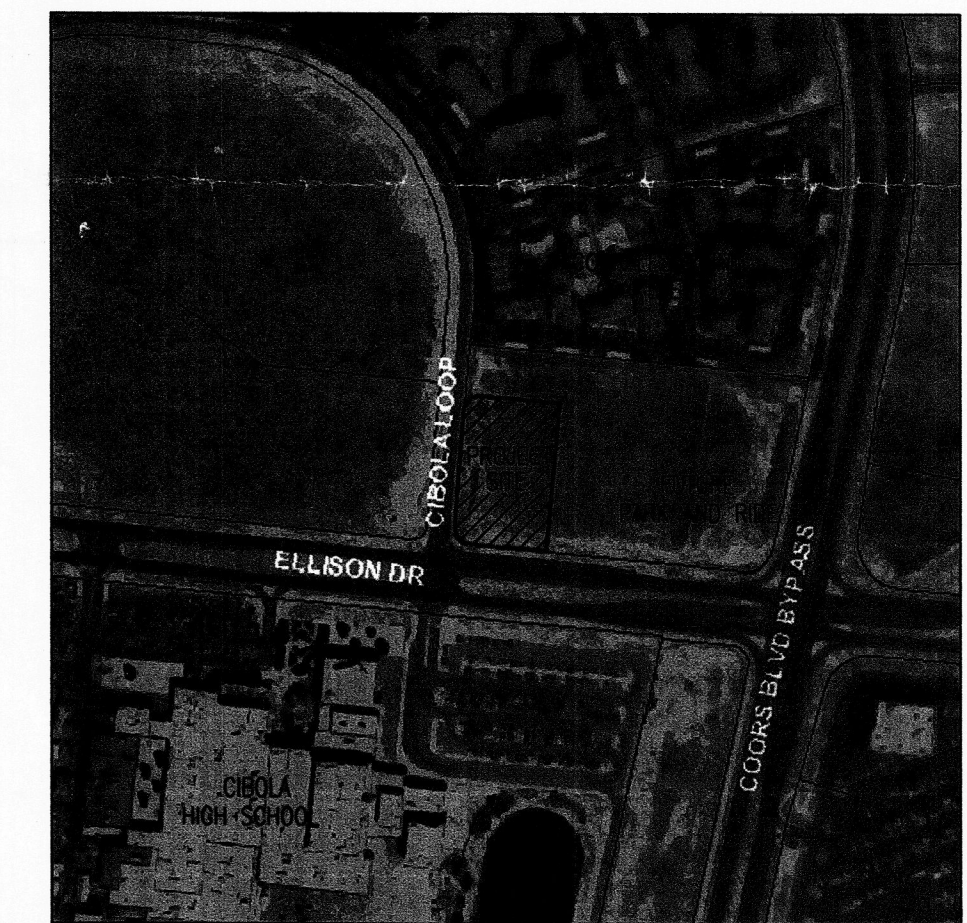
FORMER TRACT B-9D  
SEVEN-BAR RANCH  
(12/21/1989, C40-75)

**PROJECT NUMBER:** 1000593  
**Application Number:** 03-010791

This plan is consistent with the specific Site Development Plan approved by the Environmental Planning Commission (EPC), dated \_\_\_\_\_ and the Findings and Conditions in the Official Notification of Decision are satisfied.

**DRB SITE DEVELOPMENT PLAN SIGNOFF APPROVAL:**

<i>Bill D...</i> Traffic Engineering, Transportation Division	3-15-04 Date
<i>Roger A. ...</i> Utilities Department	3-15-04 Date
<i>Christine ...</i> Parks and Recreation Department	7/30/03 Date
<i>Bradley ...</i> City Engineer	7/30/03 Date
<i>Michael ...</i> Solid Waste Management	7-31-03 Date
<i>Sheran ...</i> DRB Chairperson, Planning Department	7/30/03 Date



VICINITY MAP  
ZONE MAP A-13-Z

OWNER CITY OF ALBUQUERQUE ALBUQUERQUE FIRE DEPARTMENT 11510 Sunset Gardens SW Albuquerque, New Mexico 87121	SCALE 1" = 20'-0"
PROJECT <b>FIRE STATION #21</b>	DATE SPRING 2003
PROJECT MANAGER Ramon J. Sarason, AIA	DRAWING FILE NO. ".DWG
DRAWN BY RMR/M	PROJECT NO. 0301 COA AFD 5 & 21

CITY OF ALBUQUERQUE PUBLIC WORKS DEPARTMENT ENGINEERING DEVELOPMENT GROUP			
TITLE: DRB - SITE DEVELOPMENT PLAN FOR SUBDIVISION AND BUILDING PERMIT ENLARGED ARCHITECTURAL SITE PLAN			
Design Review Committee	City Engineer Approval	MO./DAY/YR. APRIL 1, 2003	MO./DAY/YR. APRIL 1, 2003
		JULY 21, 2003	
		DECEMBER 8, 2003	
City Project No. DRB #1000593	Zone Map No. A-13-Z	Sheet # A1.2	Of **

R=30.00'  
L=46.85'  
Δ=89°28'17"  
TAN=29.72'  
CH=N 50°30'45" E  
42.23'

L=46.05' R=564.73'  
Δ=04°58'36"  
TAN=24.54'  
CH=S 87°29'24" E  
49.04'

R=30.00'  
L=47.12'  
Δ=90°00'00"  
TAN=30.00'  
CH=N 30°29'51" W  
42.43'

1 SITE PLAN - STATION #21

1 SITE PLAN - STATION #21  
Scale: 1" = 20'-0"

PROJECT 1000593