

SEVEN BAR TOWN CENTER
 CORRALES POINT APARTMENTS

N. W.

NEW 8"x8" TAPPING SLEEVE AND VALVE

60' LONG RETAINING WALL, 2' MAX. HEIGHT

NEW 8"x8" TAPPING SLEEVE AND VALVE

ELLISON DRIVE

375' LONG RETAINING WALL, 6' MAX. HEIGHT

BYPASS

BOULEVARD

COORS

PAD FOR FUTURE BLDG. - ELEV. 77.50

PAD FOR FUTURE BLDG. - ELEV. 78.00

PAD FOR FUTURE BLDG. - ELEV. 74.50

PAD FOR FUTURE BLDG. - ELEV. 71.00

SHELTER

NEW 8" VALVE

NEW STORM MH
 BUILD OVER EXIST. 18" RCP
 RIM EL.=5056.80
 INV. EL.=5046.67

NEW "STORMCEPTOR" MH
 RIM EL.=5057.5
 INV. EL.=5054.0

MAXIMUM EXTENT OF FLOODING DURING THE 100 YR., 24 HR. STORM
 EL.=5057.54

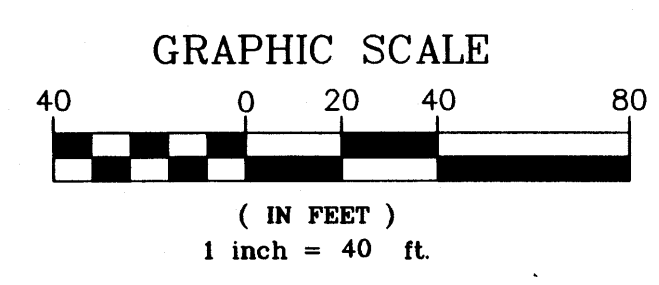
NEW "STORMCEPTOR" MH
 RIM EL.=5057.5
 INV. EL.=5054.0

NEW SANITARY MH
 RIM EL.=5055.0
 INV. EL.=5047.13

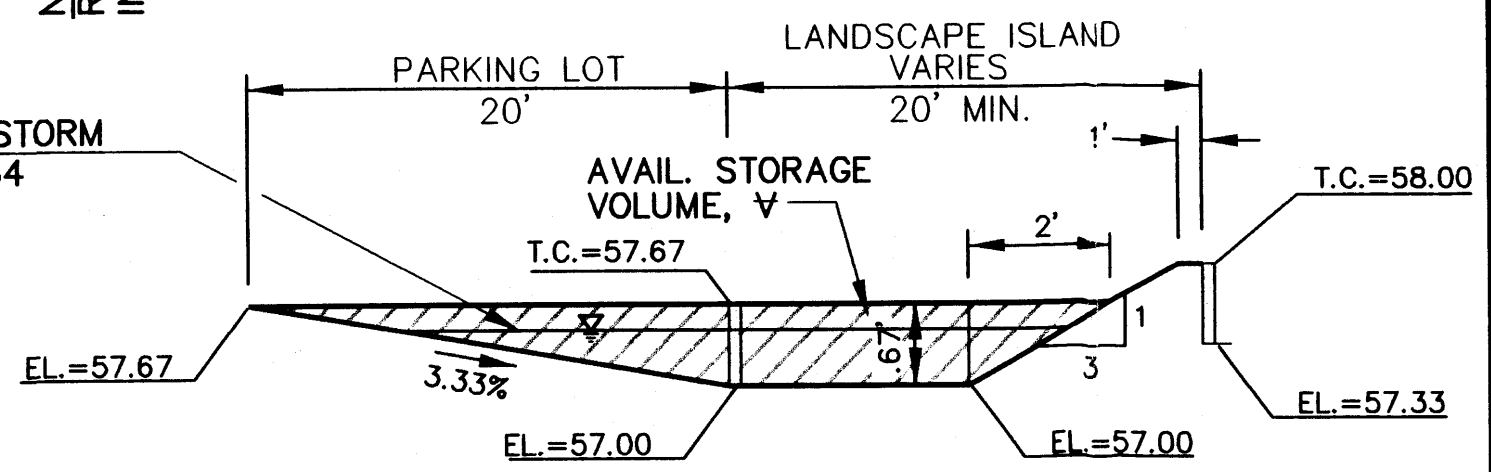
NEW SANITARY MH
 RIM EL.=5071.5
 INV. EL.=5060.33

NEW SANITARY MH
 RIM EL.=5069.5
 INV. EL.=5056.33

NEW SANITARY MH
 RIM EL.=5059.0
 INV. EL.=5050.33



MAXIMUM 100-YR., 24 HR. STORM WATER SURFACE EL.=5057.54



SECTION A-A
 NOT TO SCALE

Easterling & Associates, Inc.
 CONSULTING ENGINEERS
 2600 The American Rd., SE, Suite 100
 Rio Rancho, New Mexico 87124
 (505) 898-8021 FAX (505) 898-8501
 E-Mail: eai_engr@swcp.com

CITY OF ALBUQUERQUE
 PUBLIC WORKS DEPARTMENT
 ENGINEERING DEVELOPMENT GROUP

**SEVEN BAR TOWN CENTER
 DRAINAGE REPORT**

DESIGN REVIEW COMMITTEE CITY ENGINEER APPROVAL

LAST DESIGN UPDATE	Mo./DAY/YR.	Mo./DAY/YR.

GITY PROJECT No. XXXXXX ZONE MAP No. A-13-Z

SHEET 3 OF 5

AS BUILT INFORMATION

CONTRACTOR	DATE
STAGED BY	DATE
ACCEPTANCE BY	DATE
FIELD DRAWINGS	DATE
CORRECTED BY	DATE
RECORDED BY	DATE
NO.	DATE

BENCH MARKS

NO.	DATE
-----	------

ENGINEER'S SEAL

NO.	DATE
-----	------

SURVEY INFORMATION

NO.	DATE
-----	------

FIELD NOTES

NO.	DATE
-----	------

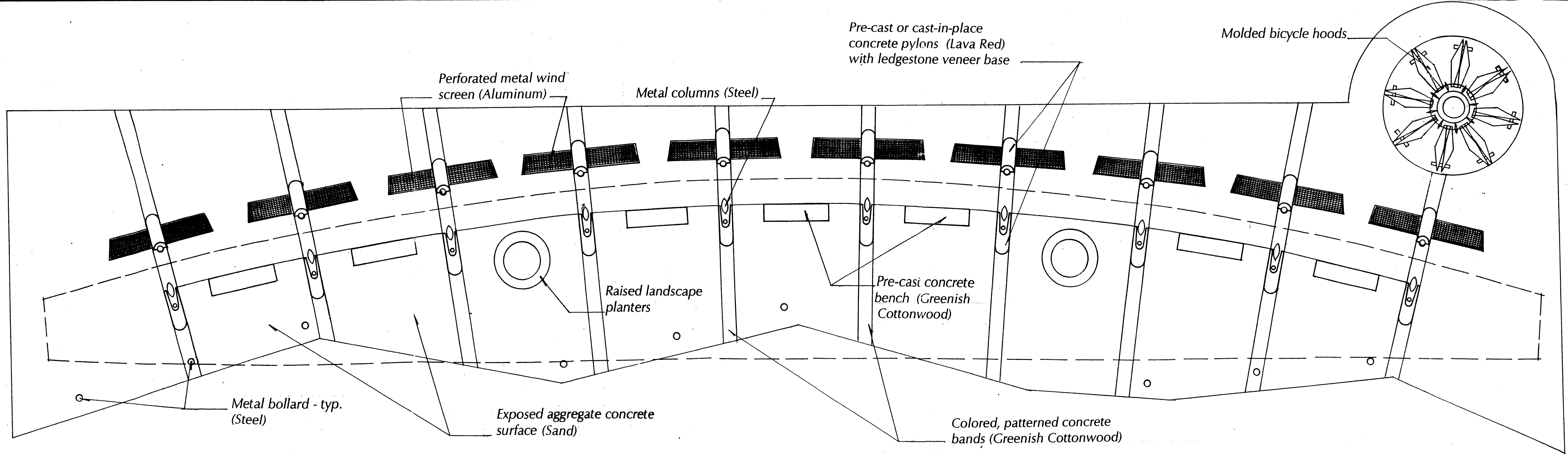
REVISIONS

NO.	DATE	BY	REMARKS

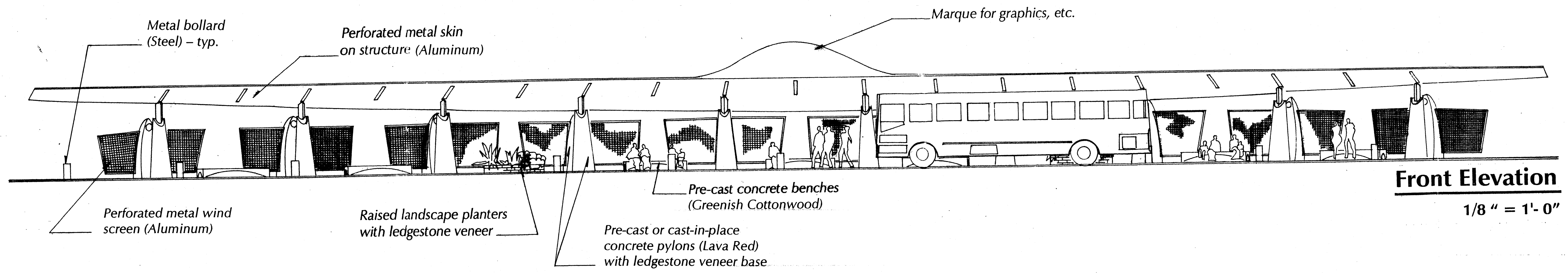
DESIGNED BY GN DATE 01/11/99

DRAWN BY PMT DATE 01/11/99

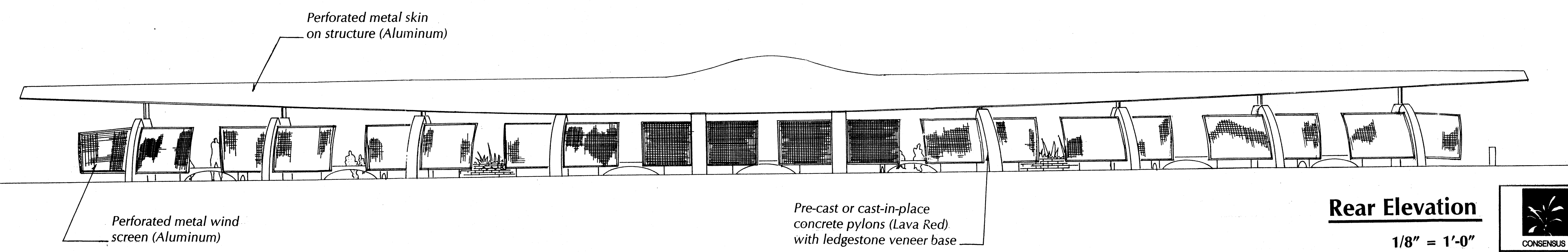
CHECKED BY RPB DATE 01/11/99



Plan View
1/8" = 1'-0"



Front Elevation
1/8" = 1'-0"



Rear Elevation
1/8" = 1'-0"

CONSENSUS PLANNING, INC.
 Planning / Landscape Architecture
 924 Park Avenue SW
 Albuquerque, NM 87102
 (505) 764-9801 Fax 842-5495
 e-mail: cp@consensusplanning.com

CITY OF ALBUQUERQUE
 TRANSIT DEPARTMENT

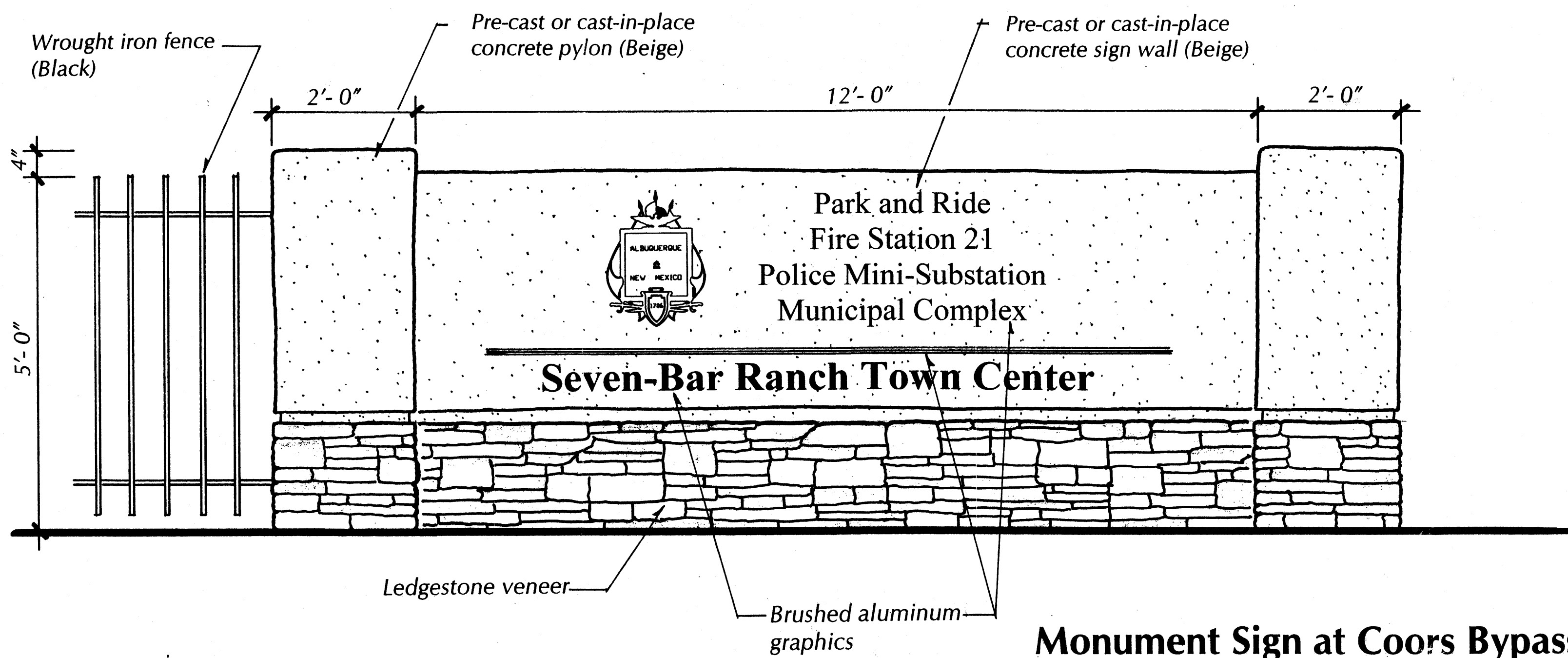
TITLE: SEVEN BAR TOWN CENTER
BUS SHELTER ELEVATIONS

Design Review Committee	City Engineer Approval	Last Design Update

AS BUILT INFORMATION		BENCH MARKS		SURVEY INFORMATION		ENGINEERS SEAL	
CONTRACTOR	NO.	DATE	BY	NO.	DATE	REVISIONS	BY

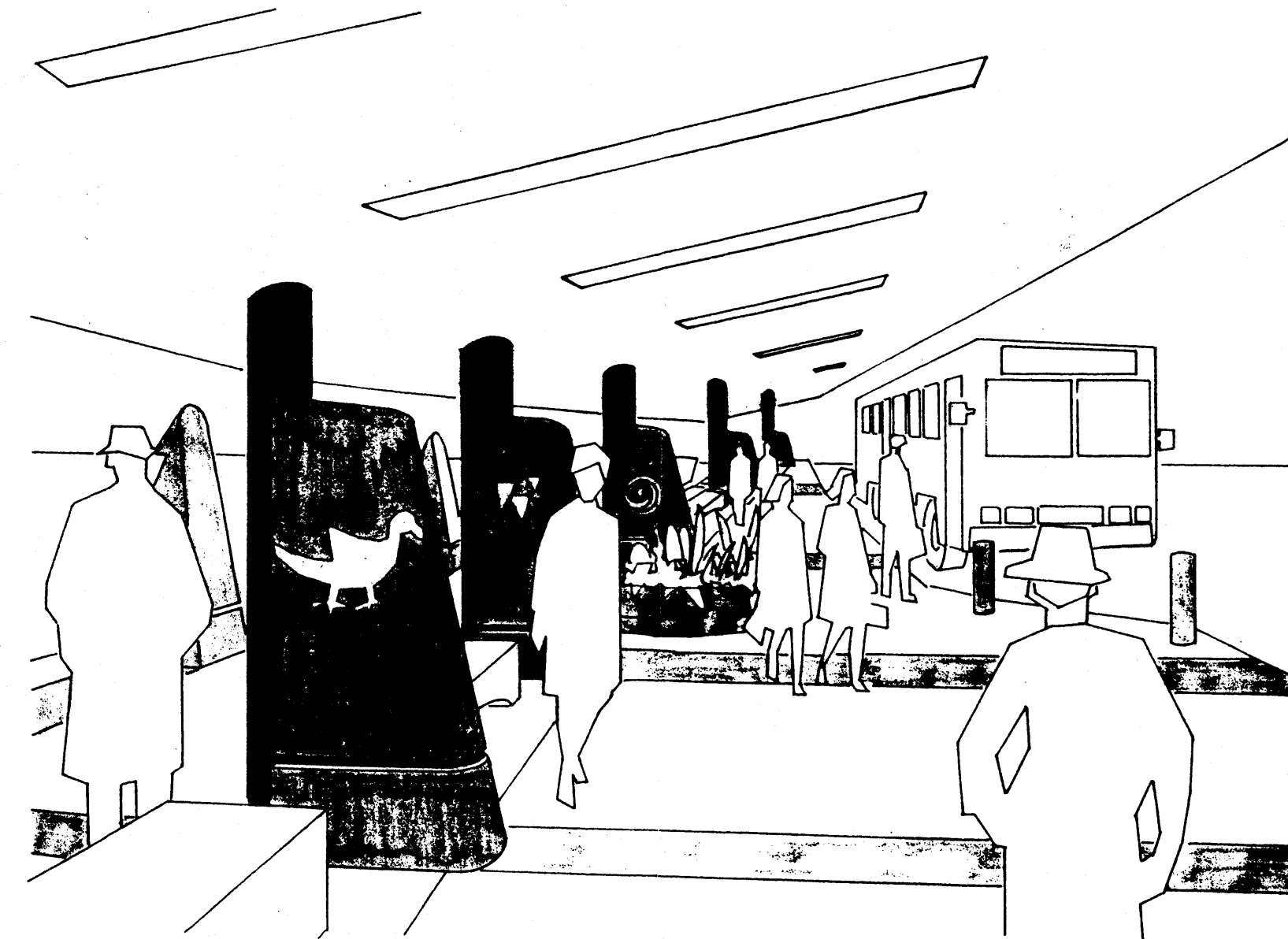
GARRETT SMITH LTD
 DESIGN, ARCHITECTURE & DEVELOPMENT

514 CENTRAL SW
 ALBUQUERQUE
 NEW MEXICO
 87102
 505/766-6988
 FAX 505/766-4508

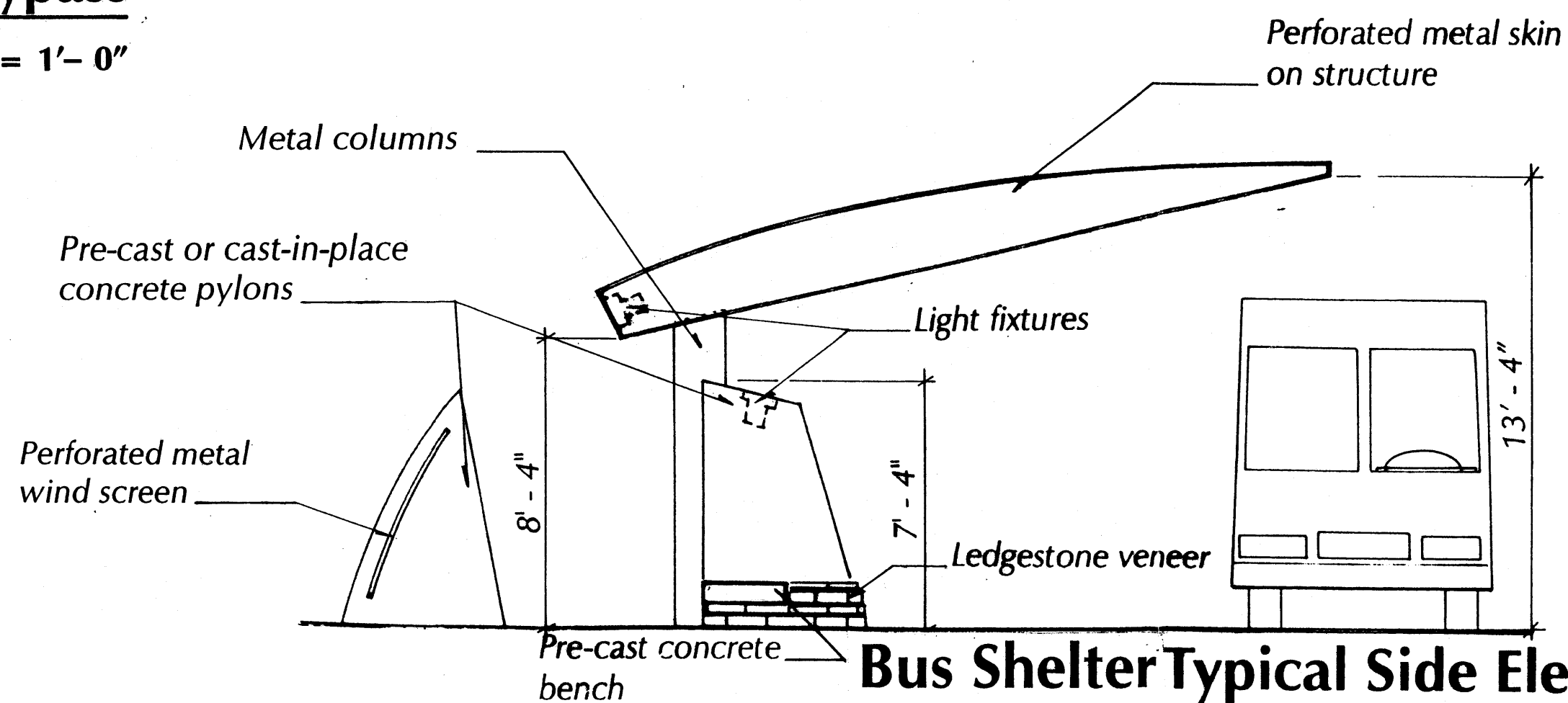


Monument Sign at Coors Bypass

3/4" = 1'-0"

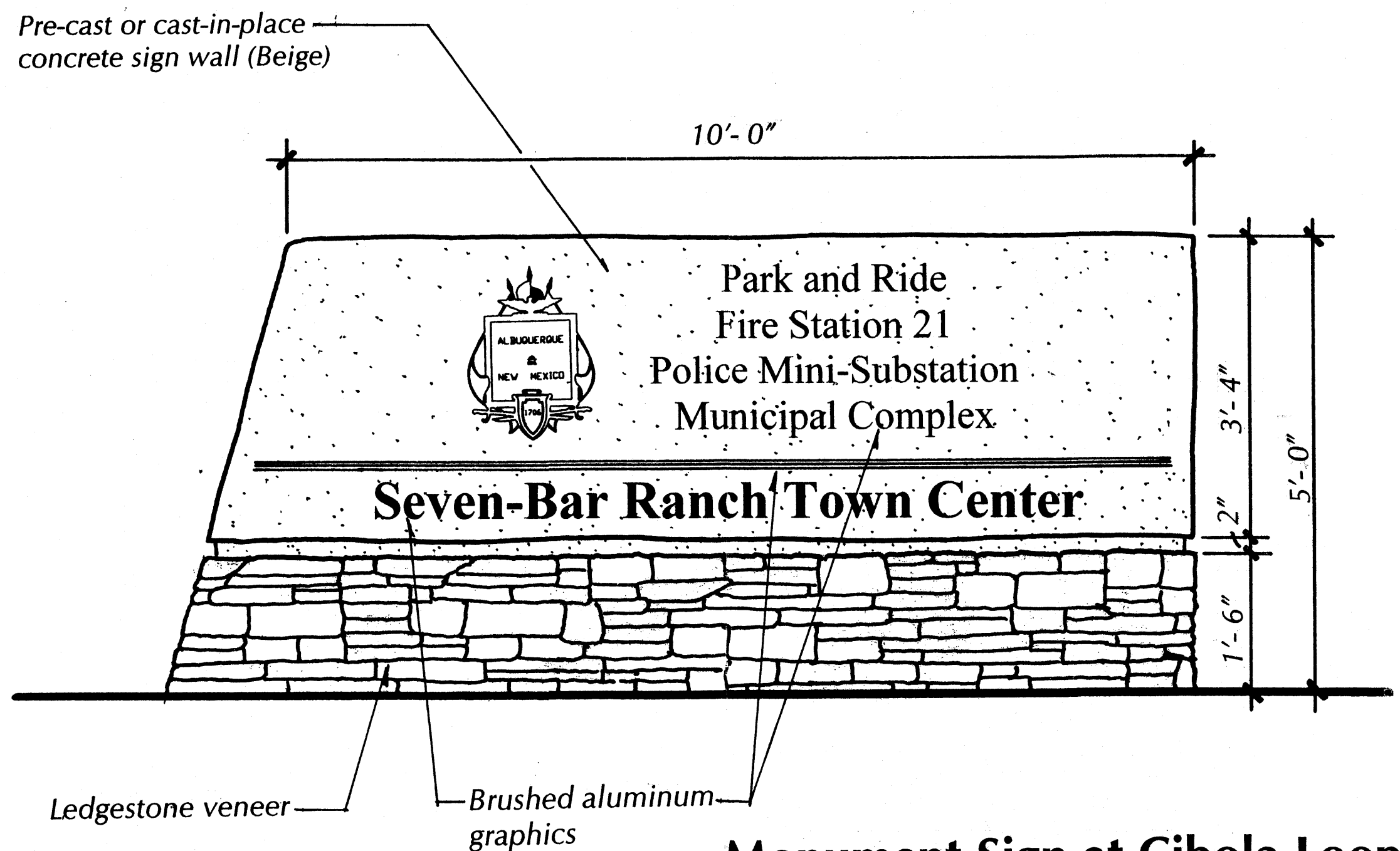


Bus Shelter Perspective



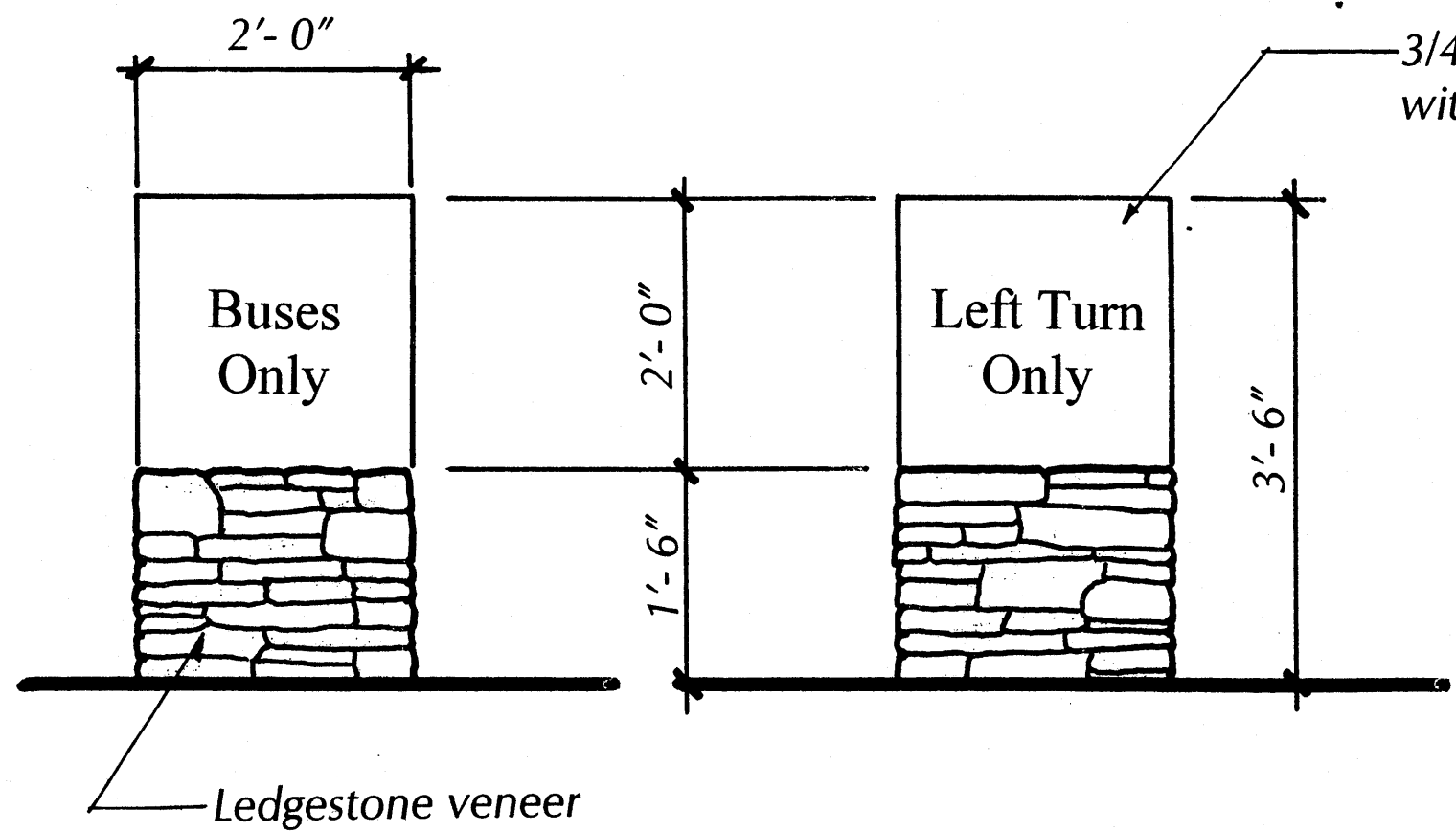
Bus Shelter Typical Side Elevation

1/4" = 1'-0"



Monument Sign at Cibola Loop

3/4" = 1'-0"



Sign "A"

Sign "B"

CONSENSUS PLANNING, INC.
 Planning / Landscape Architecture
 924 Park Avenue SW
 Albuquerque, NM 87102
 (505) 764-9801 Fax 842-5495
 e-mail: cp@consensusplanning.com

CITY OF ALBUQUERQUE TRANSIT DEPARTMENT		CONTRACTOR		DATE
TITLE: BUS SHELTER & WALL/SIGN ELEVATIONS		WORK BY	INSPECTOR	DATE
Design Review Committee		ACCEPTANCE BY	VERIFICATION BY	DATE
City Engineer Approval		DESIGNED BY	DRAWN BY	DATE
City Project No.		REVISIONS	DATE	DATE
Zone Map No.	Sheet 5 of 5	DESIGN	DATE	DATE
Last Design Update		NO. DATE	MICRO-FILM INFORMATION	
		RECORDED BY	NO.	