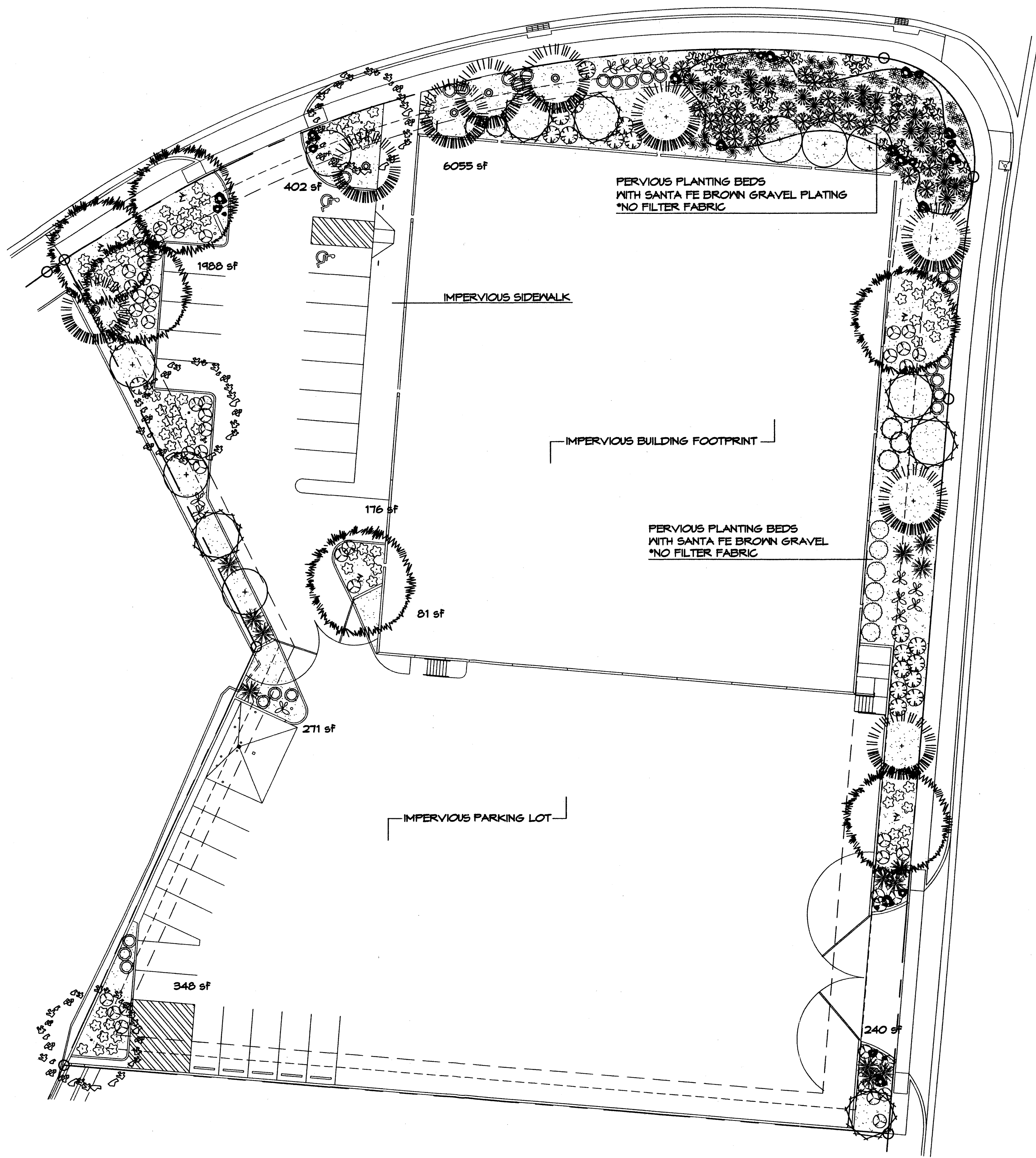


PROJECT # 1000624



PLANT LEGEND

- SYCAMORE (M+) 6
Platanus spp.
2" Cal.
- TEXAS OAK (M) 3
Quercus buckleyi
2" Cal.
- DESERT WILLOW (L) 6
Chilopsis linearis
15 Gal. 225sf
- THREE-LEAF SUMAC (L) 5
Rhus trilobata
5 Gal. 36sf
- APACHE PLUME (L) 6
Fallugia paradoxa
5 Gal. 25sf
- CATTAILS (H) 21
Typhus spp.
1 Gal. 25sf
- BIG BLUESTEM (M) 27
Andropogon gerardii
1 Gal. 25sf
- BEARGRASS (L+) 13
Nolina microcarpa
5 Gal. 36sf
- CHAMISA (L) 19
Chrysothamnus nauseosus
1 Gal. 25sf
- TURPENTINE BUSH (L+) 25
Ericameria laricifolia
1 Gal. 16sf
- PINON PINE (M) 4
Pinus edulis
2" Cal. 6' tall
- BLUE SPRUCE (M+) 5
Picea pungens
2" Cal. 6' tall
- NEW MEXICO OLIVE (L) 7
Forestiera neomexicana
15 Gal. 225sf
- DEER GRASS (M) 10
Muhlenbergia rigens
1 Gal. 16sf
- SAND LOVEGRASS (M) 30
Eragrostis trichodes
1 Gal. 9sf
- POTENTILLA (M) 88
Potentilla fruticosa
1 Gal. 9sf
- SIDEOATS GRAMMA (M) 25
Bouteloua curtipendula
1 Gal. 4sf
- PENSTEMON VARIETIES (M) 49
Penstemon spp.
1 Gal. 4sf
- PRICKLY PEAR (L) 13
Opuntia macrocentra
9 sf
- OVERSIZED GRAVEL
4 25 BOULDERS
- SANTA FE BROWN GRAVEL
*NO FILTER FABRIC
- SANTA FE BROWN GRAVEL
PLATING WITH HYDROSEED
NATIVE SEED

LANDSCAPE CALCULATIONS

TOTAL LOT AREA	66179	square feet
TOTAL BUILDINGS AREA	21030	
NET LOT AREA	45149	square feet
LANDSCAPE REQUIREMENT	15%	
TOTAL LANDSCAPE REQUIREMENT	6772	square feet
TOTAL BED PROVIDED	11386 (25%)	square feet
GROUNDCOVER REQ.	75%	square feet
TOTAL GROUNDCOVER REQUIREMENT	8540	square feet
TOTAL GROUNDCOVER PROVIDED	8554 (75%)	square feet
TOTAL LANDSCAPE PROVIDED	11386 (25%)	square feet

PARKING LOT TREE REQUIREMENTS

Shade trees required under the City of Albuquerque Parking Lot Tree Ordinance are as follows:

1 Shade tree per 10 spaces
Required # 3 Provided # 4

NOTE TO CLIENT:
Should The Hilltop not receive a Grading and Drainage plan during the design process or the on-site grades differ from the Grading and Drainage plan received, The Hilltop reserves the right to apply slope stabilization materials where the specified gravel will not be suitable. Gravel smaller than 2-4" cobblestone will not stay on a slope greater than 3:1. If the grades are greater than what was originally designed, we will request an infield change-order to lay cobblestone or rip-rap, in lieu of the specified gravel, to stabilize the slope. All vegetative material shall remain per plan.

LANDSCAPE NOTES:

Landscape maintenance shall be the responsibility of the Property Owner.
It is the intent of this plan to comply with the City of Albuquerque Water Conservation Landscaping and Water Waste Ordinance planting restriction approach. Approval of this plan does not constitute or imply exemption from water waste provisions of the Water Conservation Landscaping and Water Waste Ordinance.

Water management is the sole responsibility of the Property Owner. All landscaping will be in conformance with the City of Albuquerque Zoning Code, Street Tree Ordinance, Pollen Ordinance, and Water Conservation Landscaping and Water Waste Ordinance. In general, water conservative, environmentally sound landscape principles will be followed in design and installation.

Plant beds shall achieve 75% live ground cover at maturity.

Santa Fe Brown Gravel over Filter Fabric shall be placed in all landscape areas which are not designated to receive native seed.

IRRIGATION NOTES:

Irrigation shall be a complete underground system with Trees to receive 1 Netafim spiral (50' length) with 3 loops at a final radius of 4.5' from tree trunk, pinned in place. Netafim shall have emitters 12" o.c. with a flow of .6 gph. Shrubs to receive (2) 1.0 GPH Drip Emitters. Drip and Bubbler systems to be tied to 1/2" poly pipe with flush caps at each end. Trees and shrubs shall be on separate valves.

Run time per each shrub drip valve will be approximately 15 minutes per day. Tree drip valve shall run 1.5 hours, 3 times per week. Run time will be adjusted according to the season.

Point of connection for Irrigation system is unknown at current time and will be coordinated in the field. Irrigation will be operated by automatic controller.

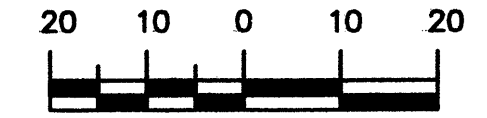
Location of controller to be field determined and power source for controller to be provided by others.

Irrigation maintenance shall be the responsibility of the Property Owner.

Water and Power source shall be the responsibility of the Developer/Builder.

SEE SHEET L2 FOR DETAILS

GRAPHIC SCALE



SCALE: 1"=20'

The Hilltop

LANDSCAPE ARCHITECTS & CONTRACTORS
Cont. Lic. #26458
7909 Edith N.E.
Albuquerque, NM 87184
Ph. (505) 898-9690
Fax (505) 898-7737
cmj@hilltoplandscaping.com
All creative ideas contained herein remain the property of The Hilltop Landscape Architects and Contractors and are protected by copyright laws. This is an original design and must not be released or copied unless applicable fees have been paid or job order placed.

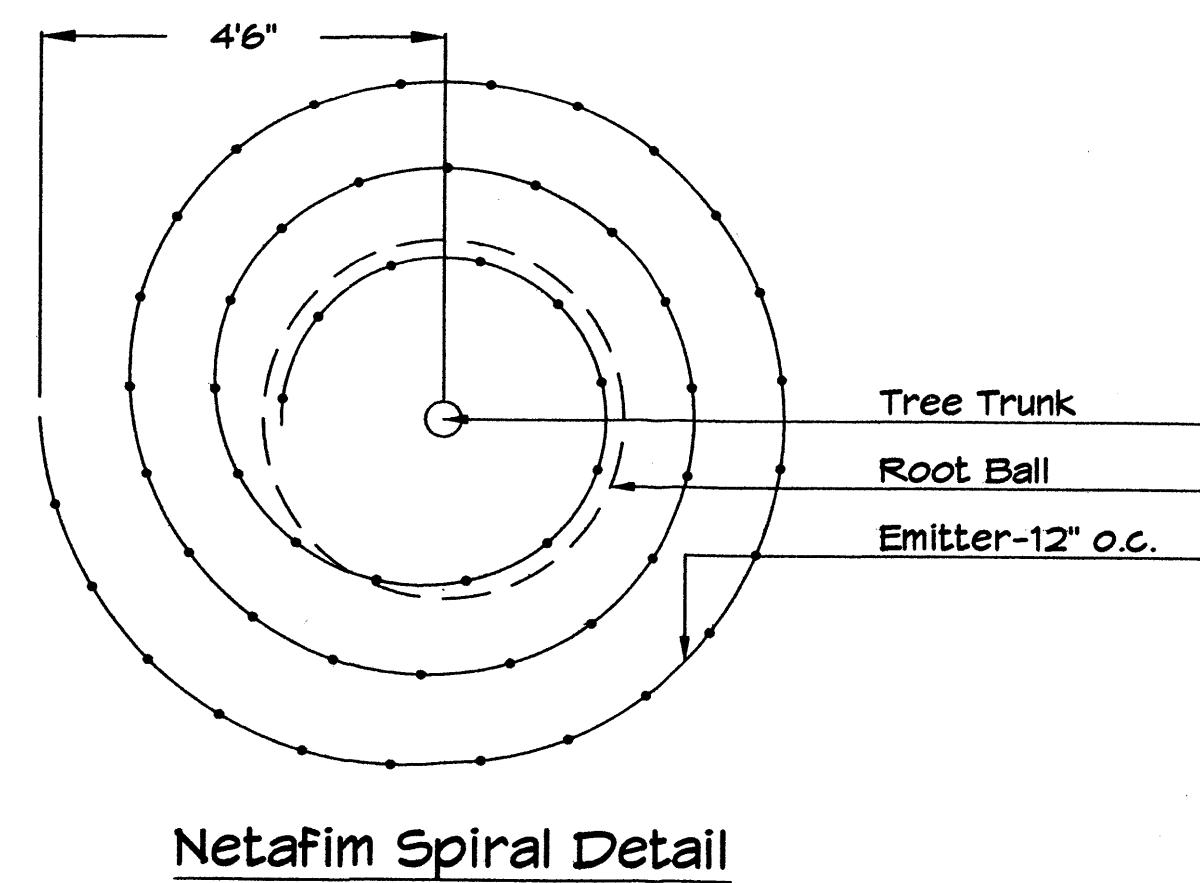
THE CORNER AT THE ALAMEDAS
OFFICE/WAREHOUSE

8615 ALAMEDA PARK NE
ALBUQUERQUE, NM 87113-1547

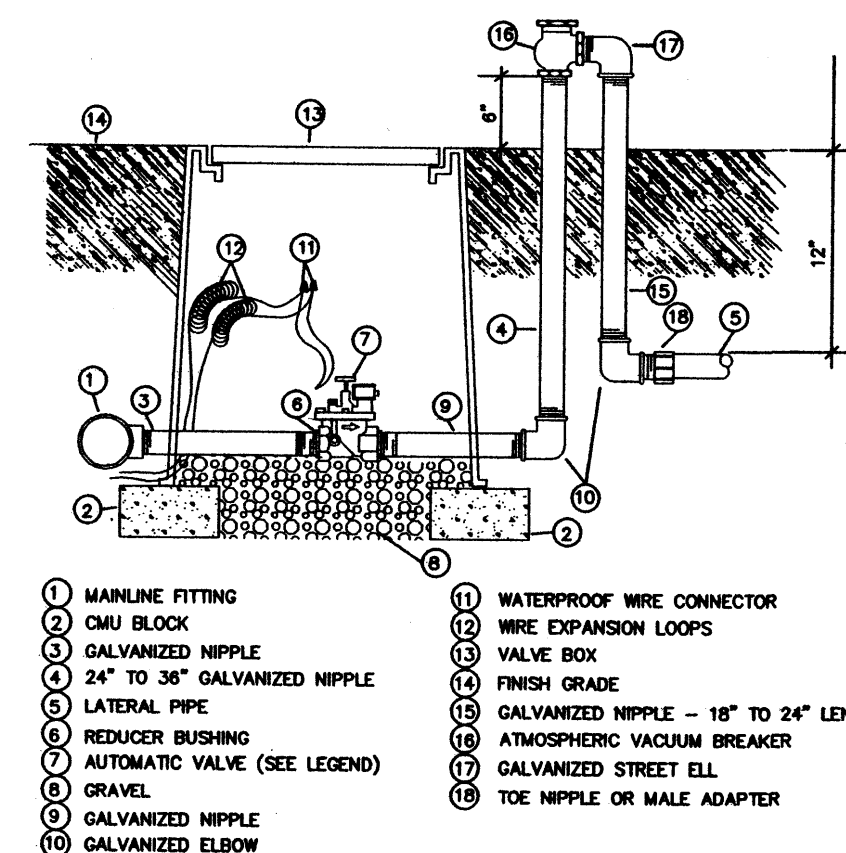
G. DONALD DUDLEY AIA
ARCHITECT
SIMMS TOWER STUDIO 850
400 GOLD AVENUE SW
ALBUQUERQUE, NEW MEXICO
8 7 1 0
TEL 505.243.8100
FAX 505.843.6820

date: JANUARY 29, 2007
drawn by: RMM

L1 of L2
sequence no. of

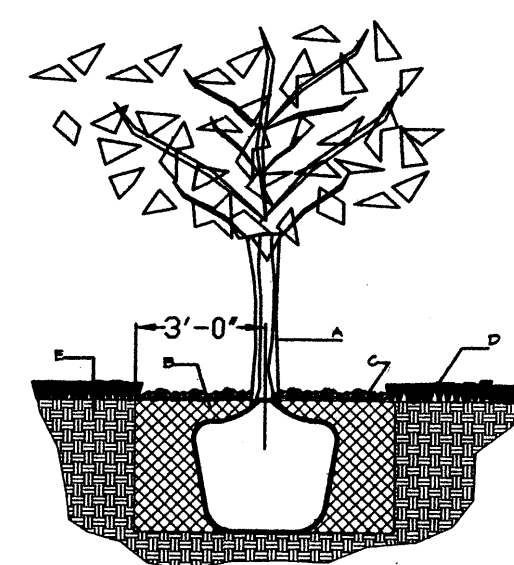


Netafim Spiral Detail



- 1 MAINLINE FITTING
- 2 CWJ BLOCK
- 3 GALVANIZED NIPPLE
- 4 24" TO 36" GALVANIZED NIPPLE
- 5 LATERAL PIPE
- 6 REDUCER BUSHING
- 7 AUTOMATIC VALVE (SEE LEGEND)
- 8 GRAVEL
- 9 GALVANIZED NIPPLE
- 10 GALVANIZED ELBOW
- 11 WATERPROOF WIRE CONNECTOR
- 12 WIRE EXPANSION LOOPS
- 13 VALVE BODY
- 14 FINISH GRADE
- 15 GALVANIZED NIPPLE - 18" TO 24" LENGTH
- 16 ATMOSPHERIC VACUUM BREAKER
- 17 GALVANIZED STREET EL
- 18 TEE NIPPLE OR MALE ADAPTER

AUTOMATIC VALVE W/ ATMOSPHERIC VACUUM BREAKER



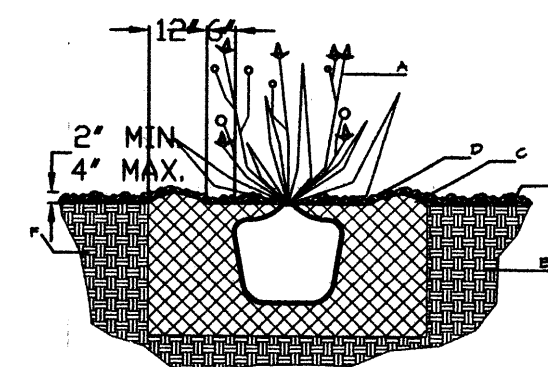
GENERAL NOTES:

1. ROOTBALL SHALL BE PLACED ON UNDISTURBED SOIL TO PREVENT TREE FROM SETTLING.
2. TOP OF ROOTBALL INDICATED LEVEL AT WHICH TREE WAS GROWN AND DUG; THIS REPRESENTS THE LEVEL AT WHICH THE TREE SHOULD BE INSTALLED; THAT LEVEL MAY BE EXCEEDED BY ONLY A ONE INCH LAYER OF SOIL.
3. PRIOR TO BACKFILLING TREE, ALL WIRE, ROPE AND SYNTHETIC MATERIALS SHALL BE REMOVED FROM THE TREE AND THE PLANTING PIT.
4. PRIOR TO BACKFILLING ALL BURLAP SHALL BE CUT AWAY EXCEPT FROM BOTTOM OF THE ROOTBALL..

CONSTRUCTION NOTES:

- A. TREE
- B. BACKFILL WITH EXISTING SOIL.
- C. 4" DEPTH OF BARK MULCH.
- D. TURF AT FINISH GRADE.
- E. UNDISTRUBED SOIL.

TREE PLANTING DETAIL
NTS



GENERAL NOTES:

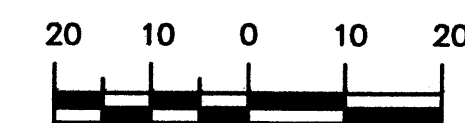
1. THE OUTSIDE DIAMETER OF THE WATER RETENTION BASIN SHALL BE TWICE THE DIAMETER OF THE SHRUB PLANTING PIT.

CONSTRUCTION NOTES:

- A. SHRUB.
- B. BACKFILL WITH EXISTING SOIL.
- C. EARTH BERM AROUND WATER RETENTION BASIN.
- D. 4" DEPTH OF BARK MULCH.
- E. FINISH GRADE.
- F. UNDISTURBED SOIL.

SHRUB PLANTING DETAIL
NTS

GRAPHIC SCALE



SCALE: 1"=20'

The Hilltop

LANDSCAPE ARCHITECTS & CONTRACTORS
 Cont. Lic. #26458
 7909 Edith N.E.
 Albuquerque, NM 87184
 Ph. (505) 898-9690
 Fax (505) 898-7737
 cmj@hilltoplandscaping.com
 All creative ideas contained herein remain the property of The Hilltop Landscape Architects and contractors and are protected by copyright laws. This is an original design and must not be released or copied unless applicable fees have been paid or job order placed.

THE CORNER AT THE
 ALAMEDAS
 OFFICE / WAREHOUSE
 8615 ALAMEDA PARK NE
 ALBUQUERQUE, NM 87113-1547

G. DONALD DUDLEY AIA

ARCHITECT

SIMMS TOWER STUDIO 850
 400 GOLD AVENUE SW
 ALBUQUERQUE, NEW MEXICO
 8 7 1 0 2
 TEL 505.243.8100
 FAX 505.843.6820



date: JANUARY 29, 2007

drawn by: RMM

L2 of L2
 sequence no. of