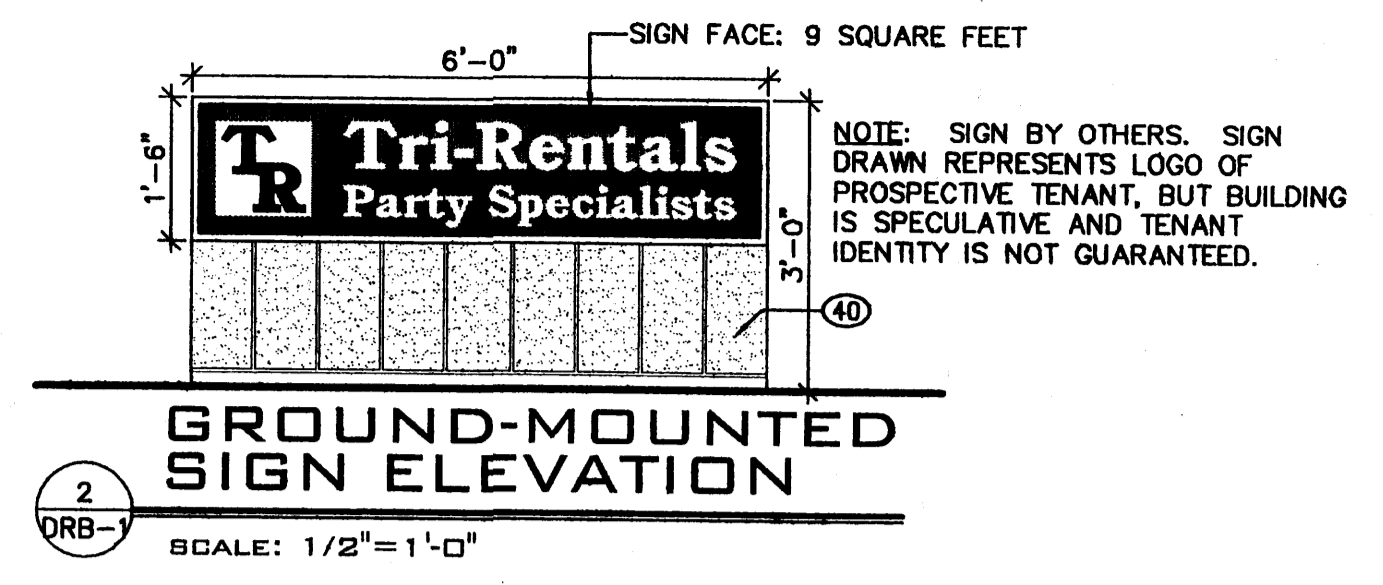


PROJECT # 1000624



**PARKING CALCULATIONS:**  
 WAREHOUSE: 17,741 SF, 1 SPACE PER 2,000 SF = 8.87 SPACES REQUIRED  
 OFFICE: 3,259 SF, 1 SPACE PER 200 SF = 16.3 SPACES REQUIRED  
 26 TOTAL SPACES REQUIRED  
 2 REQUIRED TO BE HANDICAP ACCESSIBLE  
 26 SPACES PROVIDED  
 BICYCLE SPACES REQUIRED (1 SPACE / 20 VEHICULAR SPACES): 2  
 2 BICYCLE SPACES REQUIRED, 3 PROVIDED

PROJECT NUMBER: **1000624**

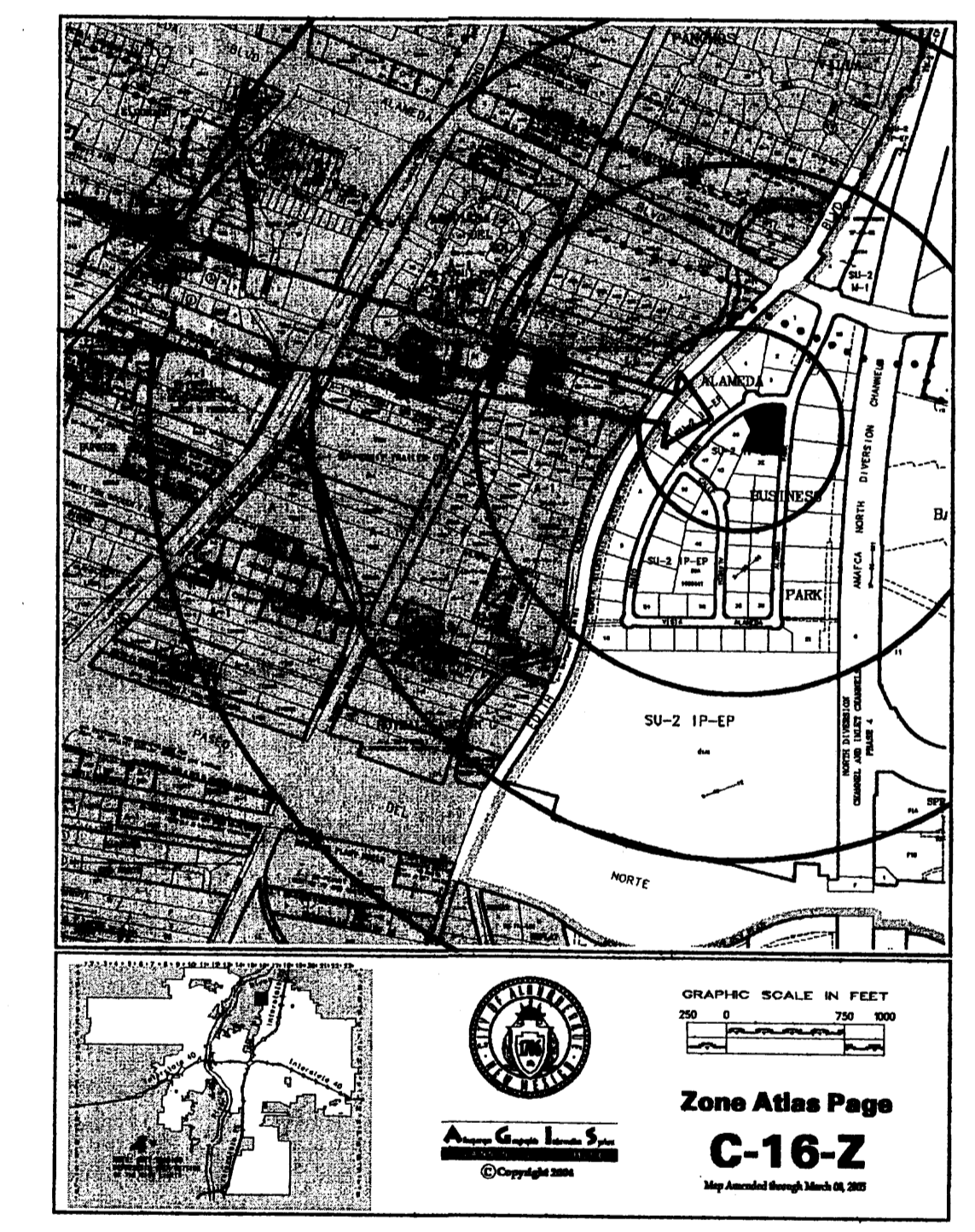
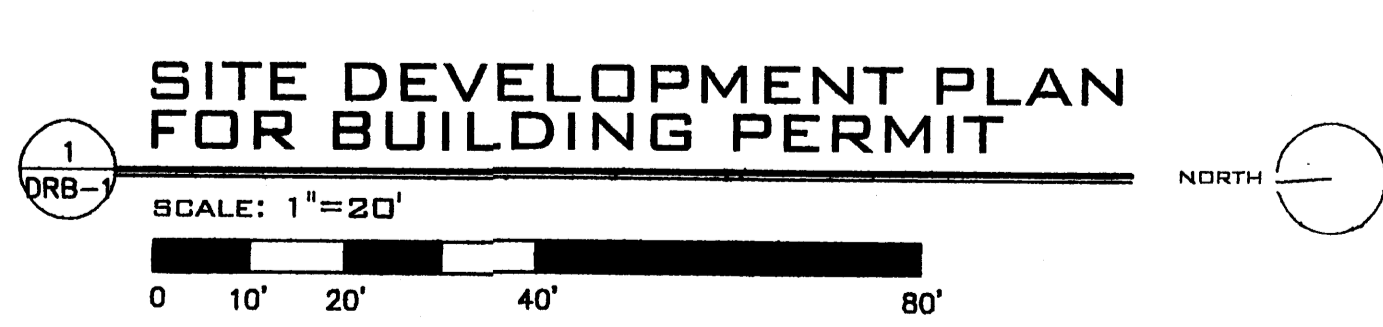
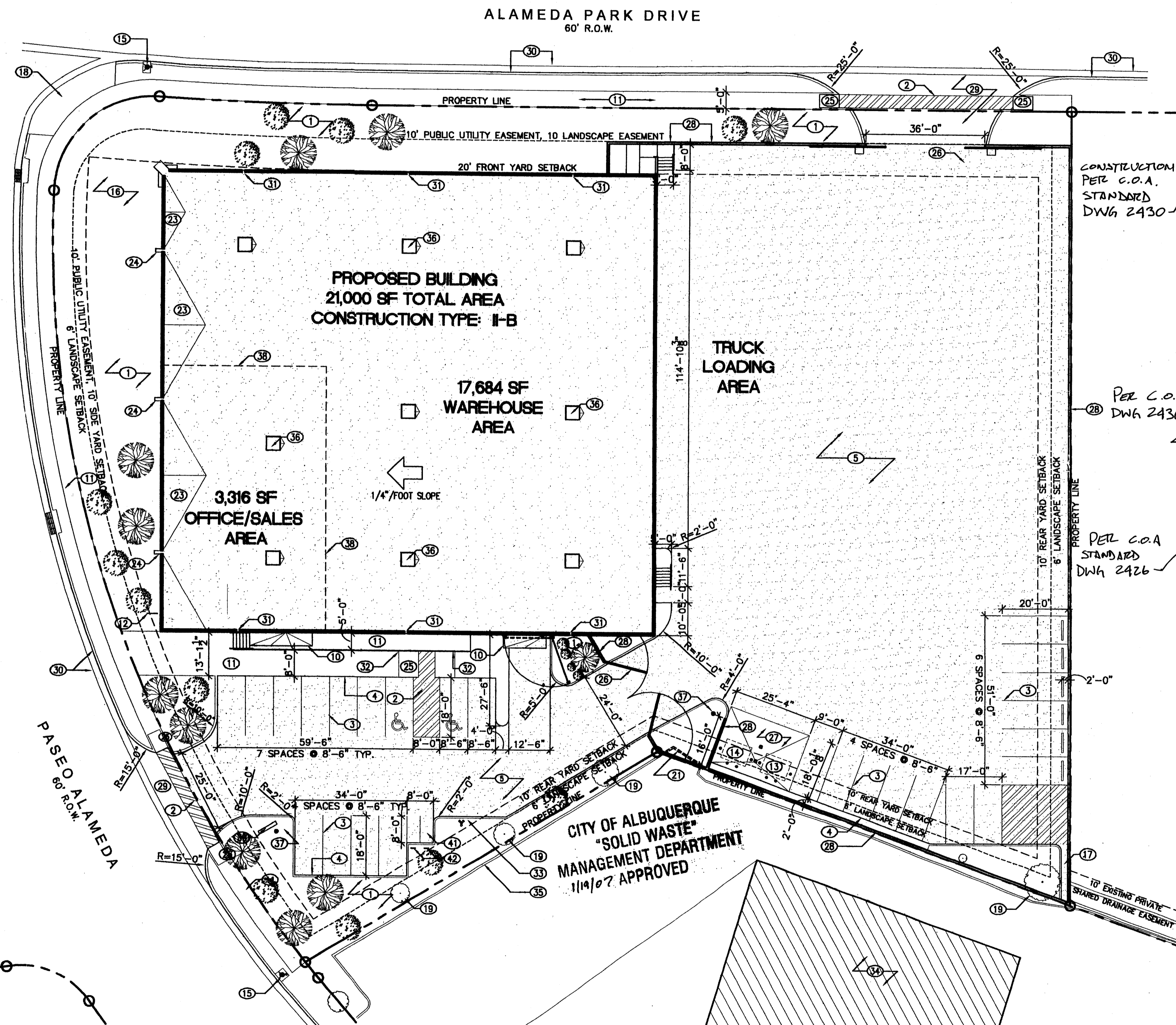
Application Number: **07 DRB - 00128**

DRB SITE DEVELOPMENT PLAN APPROVAL:

Is an Infrastructure List required? ( ) Yes ( ) No If yes, then a set of approved DRC plans with a work order is required for any construction within Public Right-Of-Way or for construction of public improvements.

**KEYED NOTES**

1. LANDSCAPE AREA, SEE LANDSCAPE DRAWINGS, CIVIL DRAWINGS
2. 4" WIDE PAINT STRIPING AT ACCESSIBLE ROUTE AND PEDESTRIAN CONNECTION, BLUE COLOR
3. 4" WIDE PARKING STRIPING
4. CONCRETE CURB RE: CIVIL
5. PAVING RE: CIVIL
6. T.P.O. MEMBRANE ROOF
7. EXISTING SIDEWALK TO REMAIN
8. PAINTED WHEELCHAIR SYMBOL AT REAR OF PARKING SPACE, BLUE COLOR
9. LOCATION OF ACCESSIBLE PARKING SIGN RE: 2/C1.1
10. OUTLINE OF AWNING BELOW
11. CONCRETE SIDEWALK RE: CIVIL, LIGHT BROOM FINISH
12. "THUNDERBOLT" TB-5-G PRE-MANUFACTURED BIKE RACK W. GALVANIZED FINISH AS MANUFACTURED BY CREATIVE PIPE, INC., HERMOSA BEACH, CA., PHONE (310)376-9536, WWW.CREATIVEPIPE.COM
13. LOCATION OF TRASH RECEPTACLE
14. LOCATION OF RECYCLING RECEPTACLE
15. LOCATION OF EXISTING FIRE HYDRANT (TO REMAIN)
16. CATTAIL MARSH - SEE CIVIL AND LANDSCAPE DRAWINGS
17. DRAINAGE CHANNEL TO EXISTING PRIVATE DRAINAGE EASEMENT, SEE CIVIL
18. EXISTING ACCESSIBLE CURB RAMP TO REMAIN
19. EXISTING TREE TO REMAIN, PROTECT DURING CONSTRUCTION
20. EXISTING TREE TO BE REMOVED
21. EXISTING CURB ENCROACHMENT TO BE REMOVED - CONTRACTOR TO NOTIFY ADJACENT PROPERTY OWNER PRIOR TO DEMOLITION
22. CRICKET
23. WELDED STEEL SCUPPER
24. ACCESSIBLE CURB RAMP
25. STEEL GATE (TO BE CONSTANTLY OPEN DURING BUSINESS HOURS)
26. CONCRETE PAD, BOLLARDS, AND AREA DRAIN
27. 6" TALL CONCRETE BLOCK WALL, BLOCK COLOR TO BE RINKER "SANDIA SAND" OR UTILITY BLOCK COMPANY "CORAL" BLOCK TO BE FROM MINIMUM OF FOUR DIFFERENT PRODUCTION RUNS TO PROVIDE SMALL VARIATIONS IN COLOR, LAID AT RANDOM
28. NEW CONCRETE DRIVEWAY APRON, SEE CIVIL
29. EXISTING CURB AND GUTTER TO REMAIN
30. ROOF OVERFLOW SLOT (NO SCUPPER), SEE CONCRETE PANEL DRAWINGS
31. HANDICAP PARKING SIGN
32. LOCATION OF FIRE DEPARTMENT SIAMESE CONNECTION
33. EXISTING ADJACENT BUILDING ON ADJACENT SITE
34. EXISTING CURB ON ADJACENT SITE
35. SKYLIGHT WITH SMOKE AND HEAT VENTING, SEE MECHANICAL
36. 15' TALL 150W METAL HALIDE POLE LIGHT W. BRONZE ANODIZED FINISH, FULL CUTOFF SHIELD
37. LINE OF OFFICE/WAREHOUSE SEPARATION BELOW
38. LOCATION OF GROUND-MOUNTED SIGN, SIZE TO NOT EXCEED 75 SQUARE FEET, HEIGHT NOT TO EXCEED 4'-0"
39. CONCRETE BLOCK BASE FOR INTERNALLY LIT SIGN IN PAINTED METAL FRAME, BLOCK TO MATCH YARD WALLS
40. TWO MOTORCYCLE PARKING SPACES @ 4'x8'
41. POLE-MOUNTED MOTORCYCLE PARKING SIGN, NO SMALLER THAN 12'x18", LOWER EDGE NO LESS THAN FOUR FEET ABOVE GRADE



**ZONE ATLAS MAP**  
SCALE: 1/2" = 1 MILE

Approved by:  
 Traffic Engineering, Transportation Division  
 Water Utility Department  
 Christine Sandoval  
 Parks and Recreation Department  
 Bradley J. Bingham  
 City Engineer  
 N/A as  
 \*Environmental Health (conditional)  
 Michael Holton (double envelope)  
 Solid Waste Management  
 Andrew Garcia  
 DRB Chairperson, Planning Department

Date: 3-14-07  
 Date: 2-14-07  
 Date: 3/14/07  
 Date: 3/14/07  
 Date: 3/15/07  
 Date: 1/19/07  
 Date: 3/15/07  
 Date:

ORIGINALS

AFD PLANS CHECKING OFFICE  
 APPROVED  
 21,000 sq ft  
 Type II Const  
 Fully Spinkled  
 Fire Flow = 1043 gpm  
 1 Fire Hydrant Required!

THE CORNER AT THE ALAMEDAS  
 OFFICE/WAREHOUSE

8615 ALAMEDA PARK NE  
 ALBUQUERQUE, NM 87113-1547

G. DONALD DUDLEY AIA  
**ARCHITECT**  
 SIMMS TOWER STUDIO 850  
 400 GOLD AVENUE SW  
 ALBUQUERQUE, NEW MEXICO  
 8 7 1 0 2  
 TEL 505.243.8100  
 FAX 505.843.6820

DATE: JANUARY 18, 2007  
 DRAWN BY: GDD, eh

**DRB-1**