

RETRACEMENT SURVEY
TRACT "A",
TRACT "I" & ABANDONED INDIAN SCHOOL ROAD
BUREAU OF LAND MANAGEMENT
PROJECTED SECTIONS 7 AND 8 OF TOWNSHIP 10 NORTH, RANGE 3 EAST N.M.P.M.
TOWN OF ALBUQUERQUE
CITY OF ALBUQUERQUE
BERNALILLO COUNTY, NEW MEXICO
MAY 2013

LEGAL DESCRIPTION TRACT "A"

TRACT "A", OF THE PLAT FOR THE UNITED STATES BUREAU OF LAND MANAGEMENT SURVEY OF TOWN OF ALBUQUERQUE GRANT, PROJECTED SECTIONS 7 AND 8 OF TOWNSHIP 10 NORTH, RANGE 3 EAST NEW MEXICO PRINCIPAL MERIDIAN, DATED AUGUST 12, 2011, BEING MORE PARTICULARLY DESCRIBED AS:

BEGINNING AT FOUND BRASS CORNER #6 OF SAID SURVEY ON THE EAST LINE OF SAID TRACT "A";
WHENCE CITY OF ALBUQUERQUE CONTROL MONUMENT "A-438" WHICH BEARS SOUTH 87°59'05" EAST A DISTANCE OF 345.55 FEET RUNNING;
THENCE, NORTH 09°43'07" EAST A DISTANCE OF 283.55 FEET TO A FOUND #4 REBAR WITH CAP LS4849 FOR A CORNER;
THENCE, ALONG A CURVE TO THE LEFT, HAVING A CHORD BEARING NORTH 37°02'17" WEST AND A CHORD DISTANCE OF 36.63 FEET, WITH A RADIUS OF 25.00 FEET TO A FOUND #4 REBAR WITH CAP LS4849 FOR A CORNER;
THENCE, ALONG A CURVE TO THE RIGHT, HAVING A CHORD BEARING NORTH 83°29'05" WEST A DISTANCE OF 201.54 FEET
, WITH A RADIUS OF 577.130 TO A SET #4 REBAR WITH CAP LS11463;
THENCE, NORTH 82°31'03" WEST A DISTANCE OF 1087.30 FEET TO A FOUND #4 REBAR WITH CAP LS4849 FOR A CORNER;
THENCE, SOUTH 08°13'10" WEST A DISTANCE OF 1296.51 FEET TO A SET #4 REBAR WITH CAP LS11463 FOR A CORNER;
THENCE, SOUTH 51°36'34" EAST A DISTANCE OF 419.65 FEET TO A FOUND PK NAIL WITH WASHER MARKED BLM FOR A CORNER;
THENCE, SOUTH 75°09'10" EAST A DISTANCE OF 931.90 FEET TO A SET #4 REBAR WITH CAP LS11463 FOR A CORNER;
THENCE, NORTH 18°13'31" EAST A DISTANCE OF 921.84 FEET TO A SET #4 REBAR WITH CAP LS11463 FOR A CORNER;
THENCE, NORTH 76°27'14" WEST A DISTANCE OF 159.22 FEET TO SE #4 REBAR WITH CAP LS11463 FOR A CORNER;
THENCE, NORTH 09°22'25" EAST A DISTANCE OF 337.65 FEET TO A SET #4 REBAR WITH CAP LS11463 FOR A CORNER;
THENCE, NORTH 80°39'51" WEST A DISTANCE OF 20.40 FEET TO THE POINT OF BEGINNING AND CONTAINING 46.1107 ACRES MORE OR LESS, PER ATTACHED PLAT MADE APART OF HEREIN.

LEGAL DESCRIPTION TRACT "INDIAN SCHOOL ROAD"

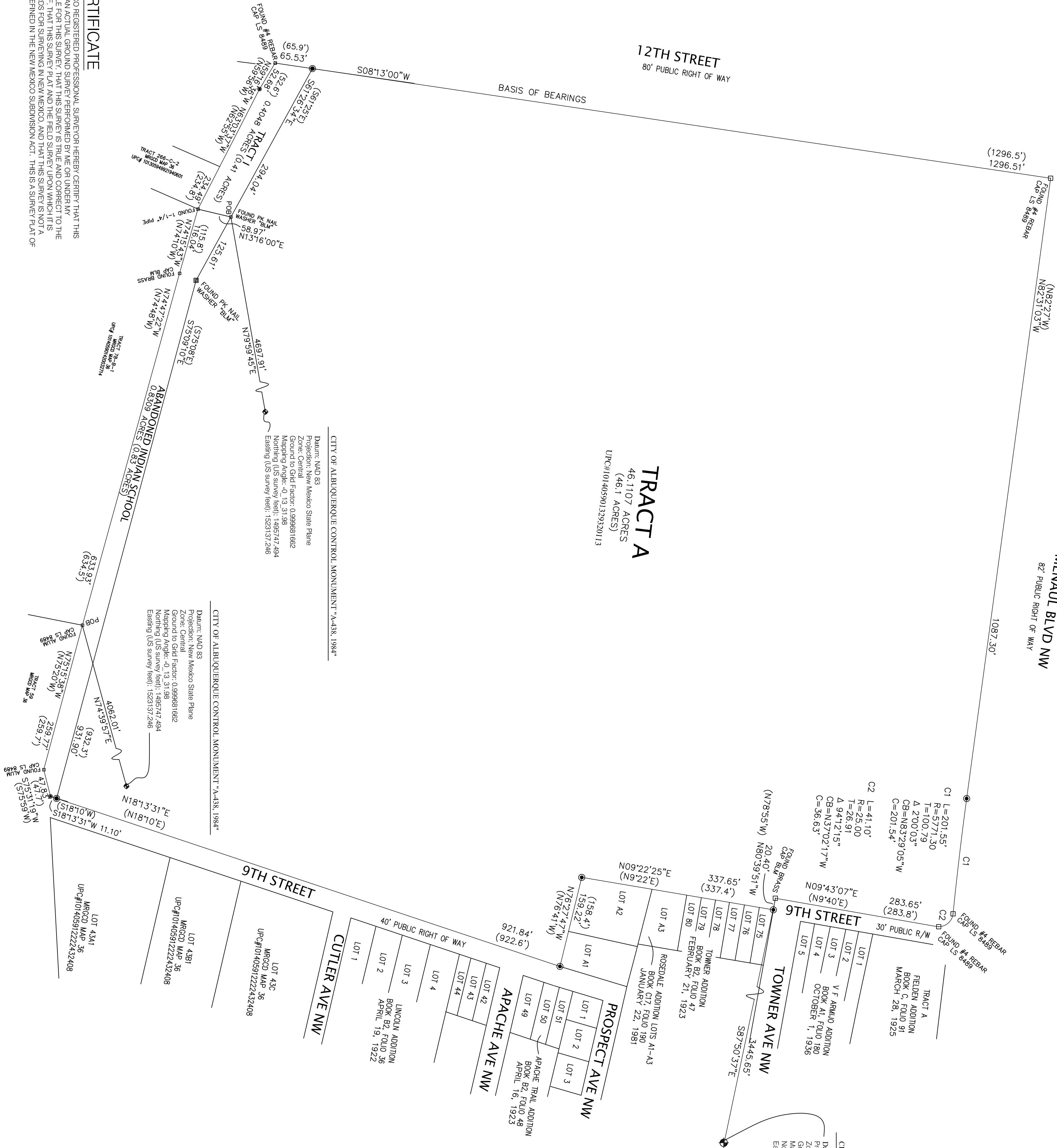
TRACT "INDIAN SCHOOL ROAD" AND AS SHOWN ON UNITED STATES BUREAU OF LAND MANAGEMENT SURVEY OF TOWN OF ALBUQUERQUE GRANT, PROJECTED SECTIONS 7 AND 8 OF TOWNSHIP 10 NORTH, RANGE 3 EAST NEW MEXICO PRINCIPAL MERIDIAN, DATED AUGUST 12, 2011, BEING MORE PARTICULARLY DESCRIBED AS:

BEGINNING AT FOUND ALUMINUM CAP WITH LSH 8489 "X" MARK, BEING CORNER #6 OF SAID SURVEY ON THE SOUTH LINE OF SAID TRACT OF ABANDONED INDIAN SCHOOL ROAD, WHENCE CITY OF ALBUQUERQUE CONTROL MONUMENT "A-438" WHICH BEARS NORTH 74°39'57" A DISTANCE OF 4062.01;
THENCE NORTH 74°47'22" WEST A DISTANCE OF 833.93 FEET TO A FOUND BRASS CAP MARKED BLM FOR A CORNER;
THENCE, NORTH 74°15'45" WEST A DISTANCE OF 116.04 FEET TO FOUND 1 1/4" PIPE FOR A CORNER;
THENCE, NORTH 13°16'00 EAST A DISTANCE OF 58.97 FEET TO A FOUND WASHER MARKED "BLM" FOR A CORNER;
THENCE, SOUTH 61°26'34" EAST A DISTANCE OF 125.61 FEET TO A FOUND PK NAIL WITH WASHER MARKED BLM FOR A CORNER;
THENCE, SOUTH 75°09'10" EAST A DISTANCE OF 931.90 FEET TO A SE #4 REBAR WITH CAP LS11463 FOR A CORNER;
THENCE, SOUTH 18°13'31" WEST A DISTANCE OF 11.10 FEET TO A SET #4 REBAR WITH CAP LS11463 FOR A CORNER;
THENCE, SOUTH 75°31'19" WEST A DISTANCE OF 47.83 FEET TO A FOUND ALUMINUM CAP MARKED LS4849 FOR A CORNER;
THENCE, NORTH 75°15'38" WEST A DISTANCE OF 293.77 FEET TO THE POINT OF BEGINNING AND CONTAINING 0.8309 ACRES MORE OR LESS, PER ATTACHED PLAT MADE APART OF HEREIN.

LEGAL DESCRIPTION TRACT "II"

TRACT LETTERED "II" AND AS SHOWN ON UNITED STATES BUREAU OF LAND MANAGEMENT SURVEY OF TOWN OF ALBUQUERQUE CONTROL MONUMENT "A-438" WHICH BEARS NORTH 79°59'45" A DISTANCE OF 4697.31 FEET);

BEGINNING AT FOUND WASHER MARKED "BLM" ON THE NORTH EAST LINE OF SAID TRACT OF "I"; WHENCE CITY OF ALBUQUERQUE CONTROL MONUMENT "A-438" WHICH BEARS NORTH 79°59'45" A DISTANCE OF 4697.31 FEET);
THENCE SOUTH 13°16'00" WEST A DISTANCE OF 58.97 FEET TO FOUND 1 1/4" IRON PIPE FOR A CORNER;
THENCE, NORTH 63°03'37" WEST A DISTANCE OF 234.49 FEET TO A SET #4 REBAR WITH CAP LS11463 FOR A CORNER;
THENCE, NORTH 59°16'36" WEST A DISTANCE OF 52.68 FEET TO FOUND #4 REBAR WITH CAP LS4849 FOR A CORNER;
THENCE, NORTH 08°13'00" WEST A DISTANCE OF 55.53 FEET TO A SET #4 REBAR WITH CAP LS11463 FOR A CORNER;
THENCE, SOUTH 61°26'34" EAST A DISTANCE OF 294.44 FEET TO THE POINT OF BEGINNING AND CONTAINING 0.4048 ACRES MORE OR LESS, PER ATTACHED PLAT MADE APART OF HEREIN.



SURVEYORS CERTIFICATE

I, ANTHONY L. HARRIS, A NEW MEXICO REGISTERED PROFESSIONAL SURVEYOR HEREBY CERTIFY THAT THIS SURVEY PLAT WAS PREPARED FROM AN ACTUAL GROUND SURVEY PERFORMED BY ME OR UNDER MY CLOSE PERSONAL SUPERVISION AND IN ACCORDANCE WITH THE STANDARDS AND PRACTICES OF THE BEST OF MY KNOWLEDGE AND BELIEF THAT THIS SURVEY PLAT AND THE FIELD SURVEY UPON WHICH IT IS BASED MEET THE MINIMUM STANDARDS FOR SURVEYING IN NEW MEXICO, AND THAT THIS SURVEY IS NOT A LAND DIVISION OR SUBDIVISION AS DEFINED IN THE NEW MEXICO SUBDIVISION ACT. THIS IS A SURVEY PLAT OF AN EXISTING TRACT OR TRACTS.

ANTHONY L. HARRIS, N.M.L.S. NO. 11463

DATE

MONUMENT LEGEND
SCALE: 1" = 100'
□ - FOUND CONTROL STATION AS NOTED
◉ - SET 1/2" REBAR W/PLASTIC CAP STAMPED "AS 11463"
- CAP STAMPED "AS 11463"
UNLESS OTHERWISE NOTED

THE SURVEY OFFICE, LLC
333 LOMAS BLVD., N.E.
ALBUQUERQUE, NEW MEXICO 87102
PHONE: (505) 998-0303
FAX: (505) 998-0305