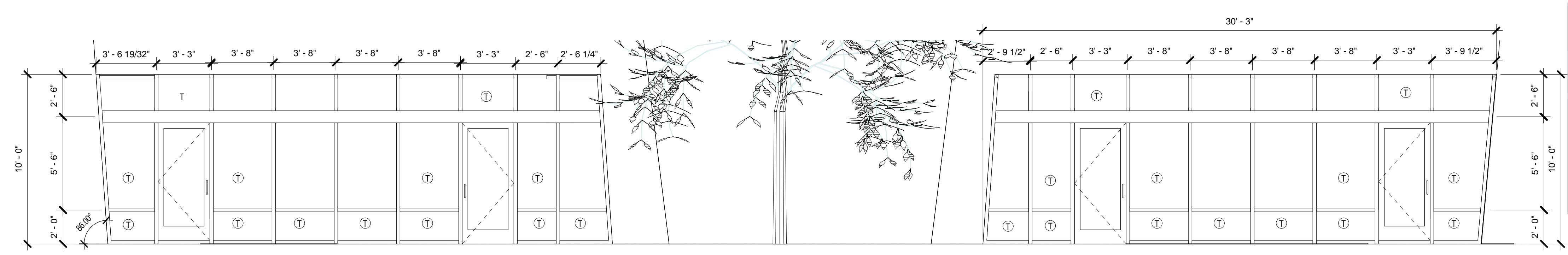
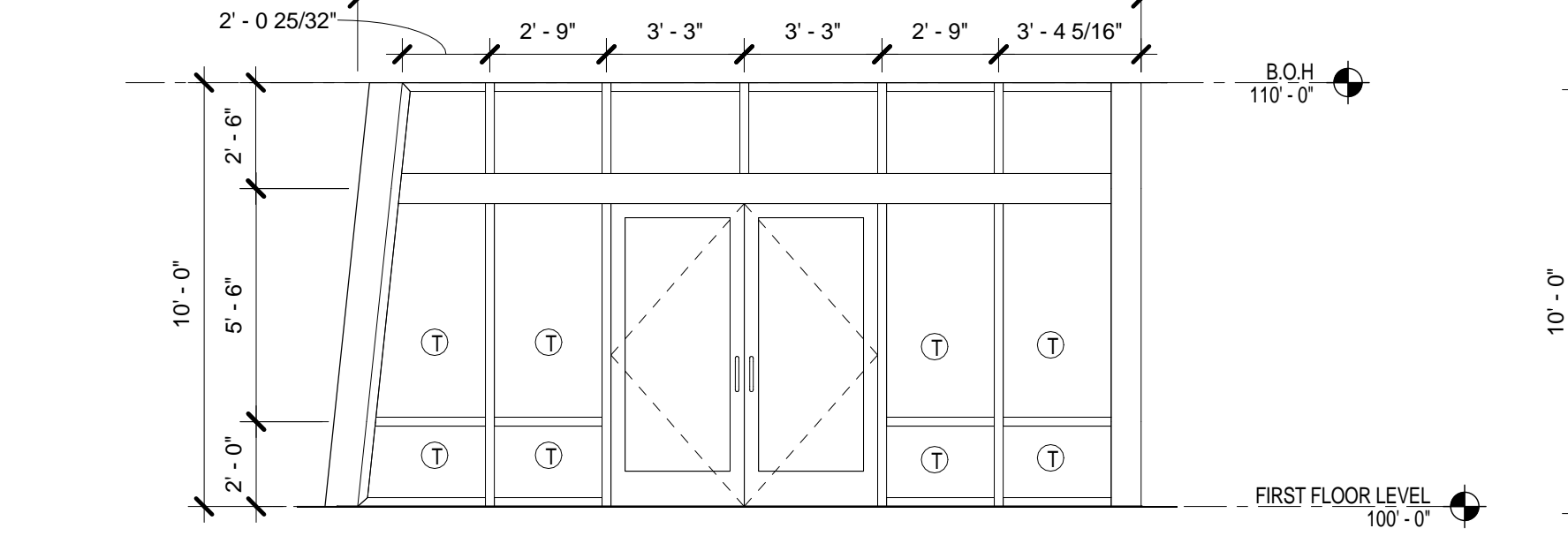


11/13/2016 11:08:17 AM

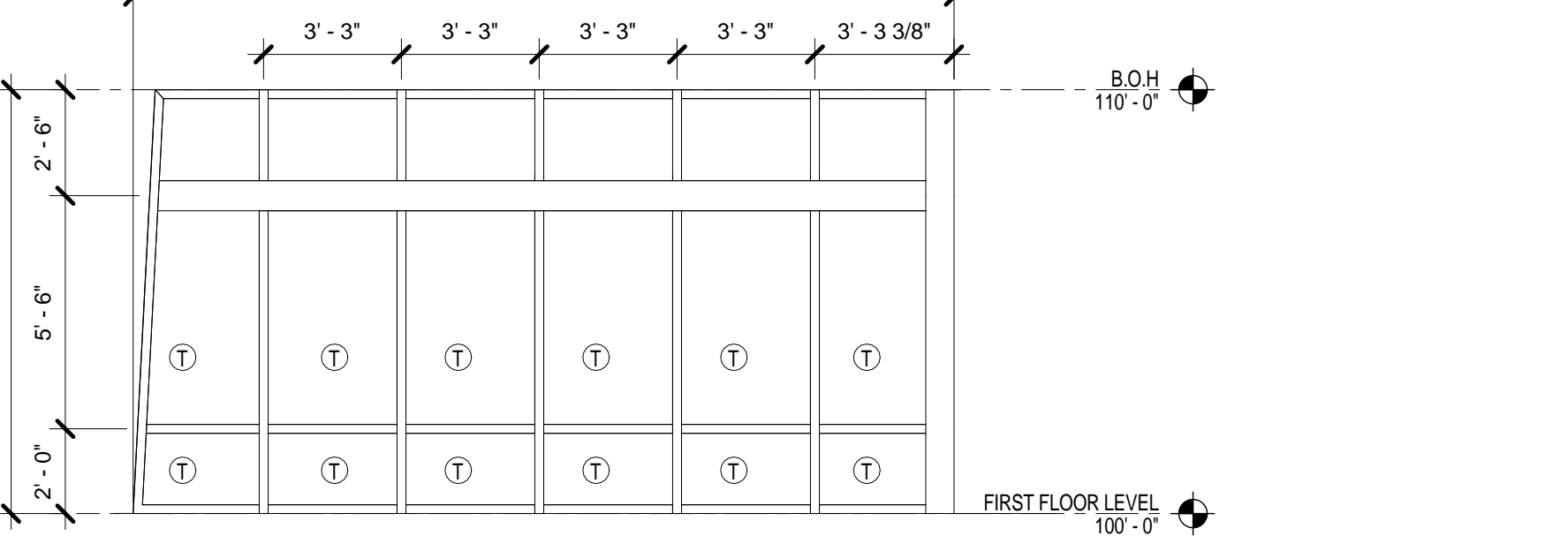
C:\Users\bolare\Documents\1513 AIS - BLDG B - jobsheet.rvt



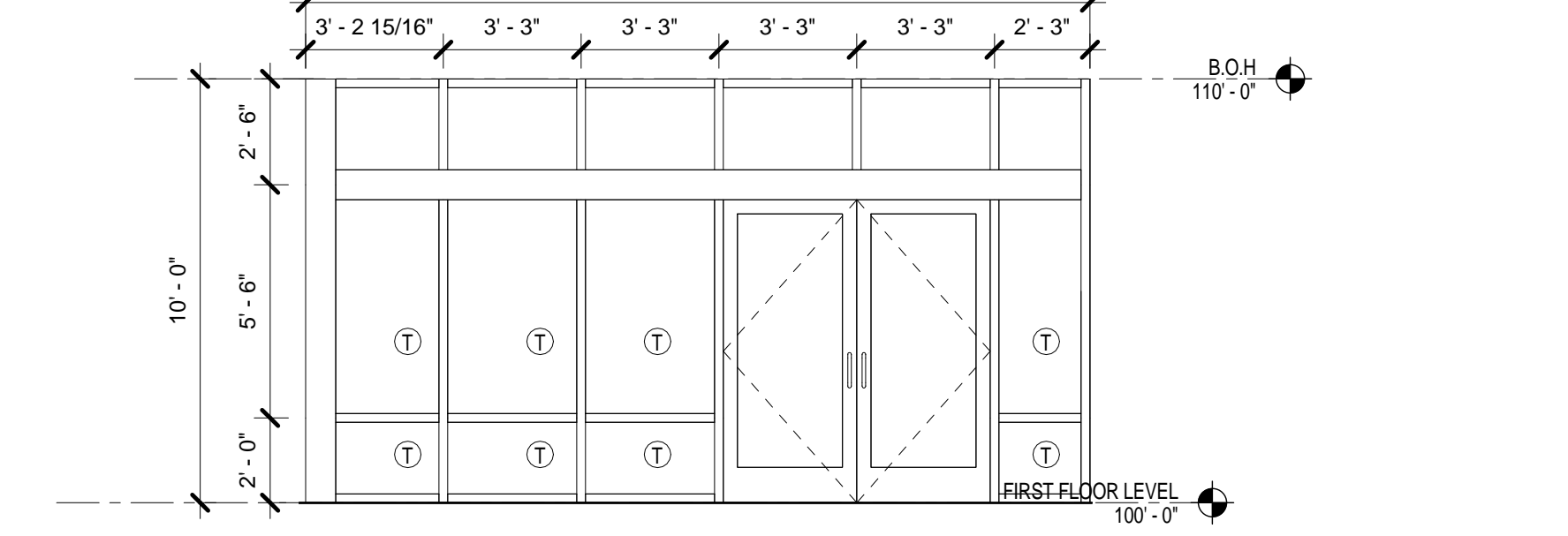
13 STOREFRONT ELEVATION - WEST SIDE CENTRAL  
1/4" = 1'-0"



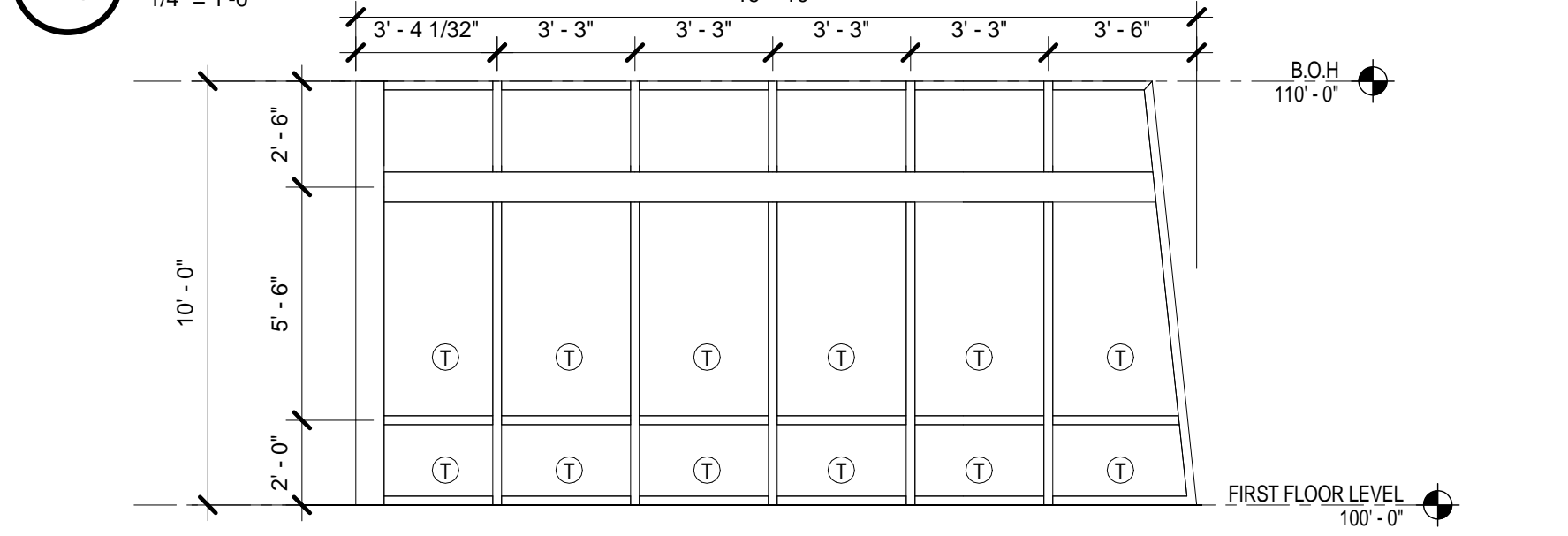
10 STOREFRONT ELEVATION-SOUTH SIDE EAST END  
1/4" = 1'-0"



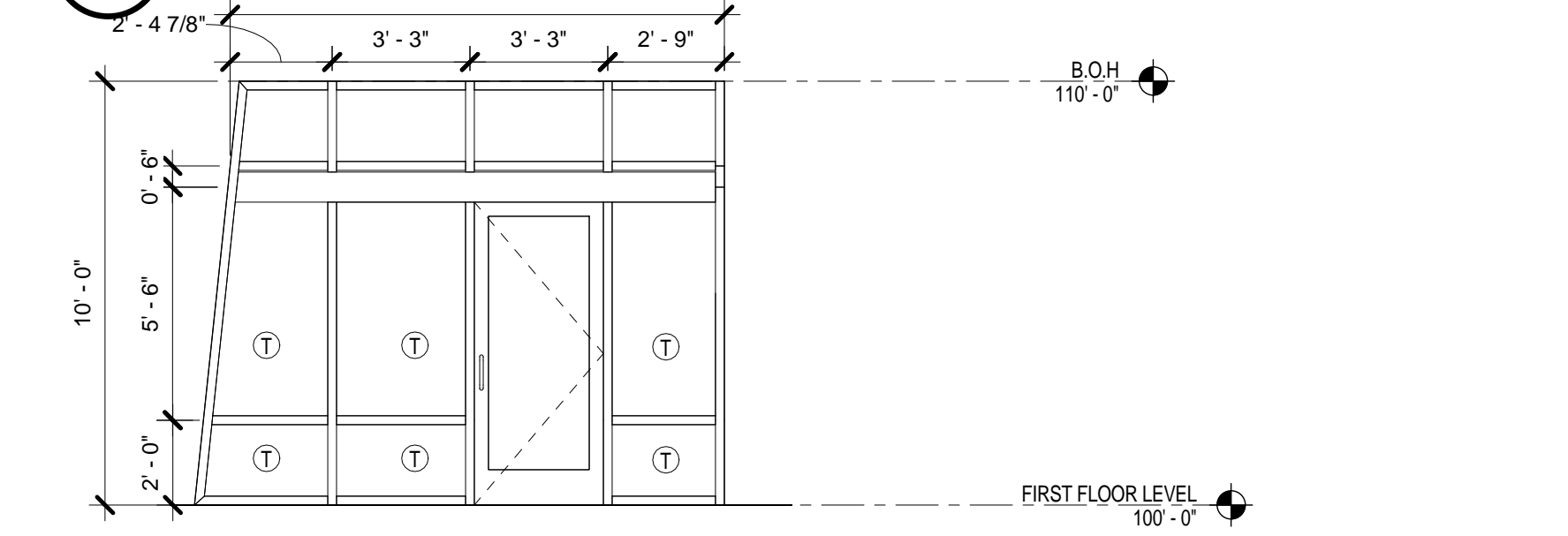
7 STOREFRONT ELEVATION - EAST SIDE NORTH END  
1/4" = 1'-0"



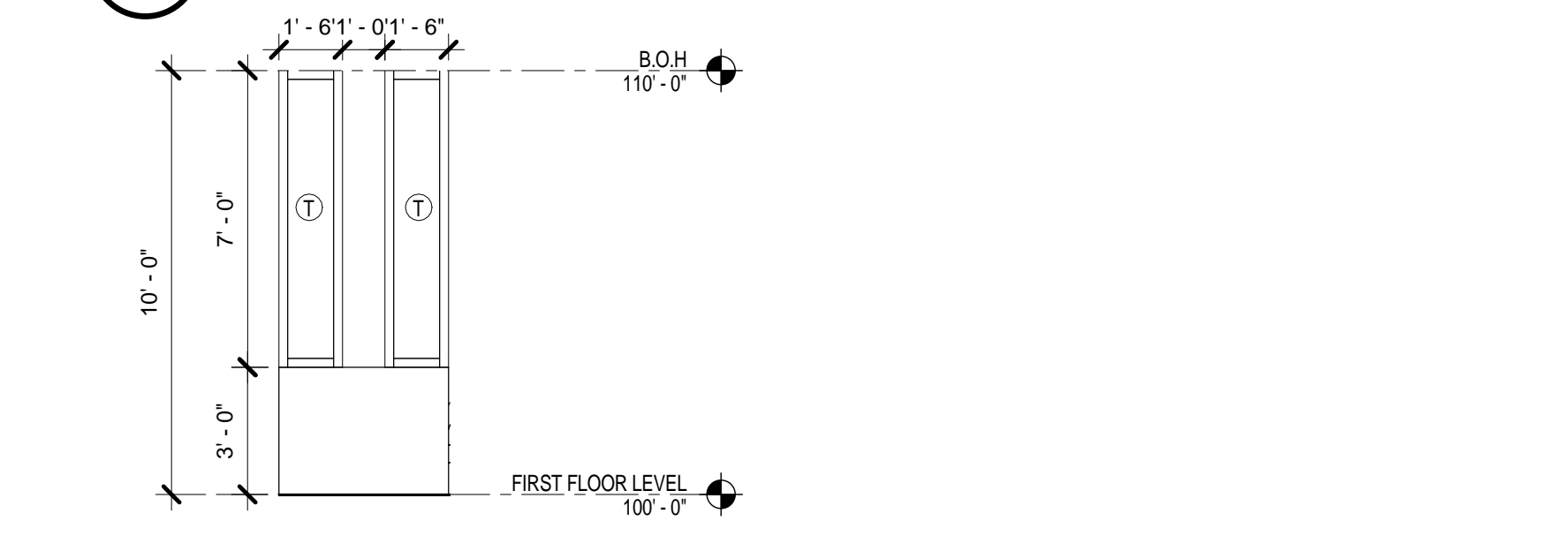
17 STOREFRONT ELEVATION - NORTH SIDE EAST END  
1/4" = 1'-0"



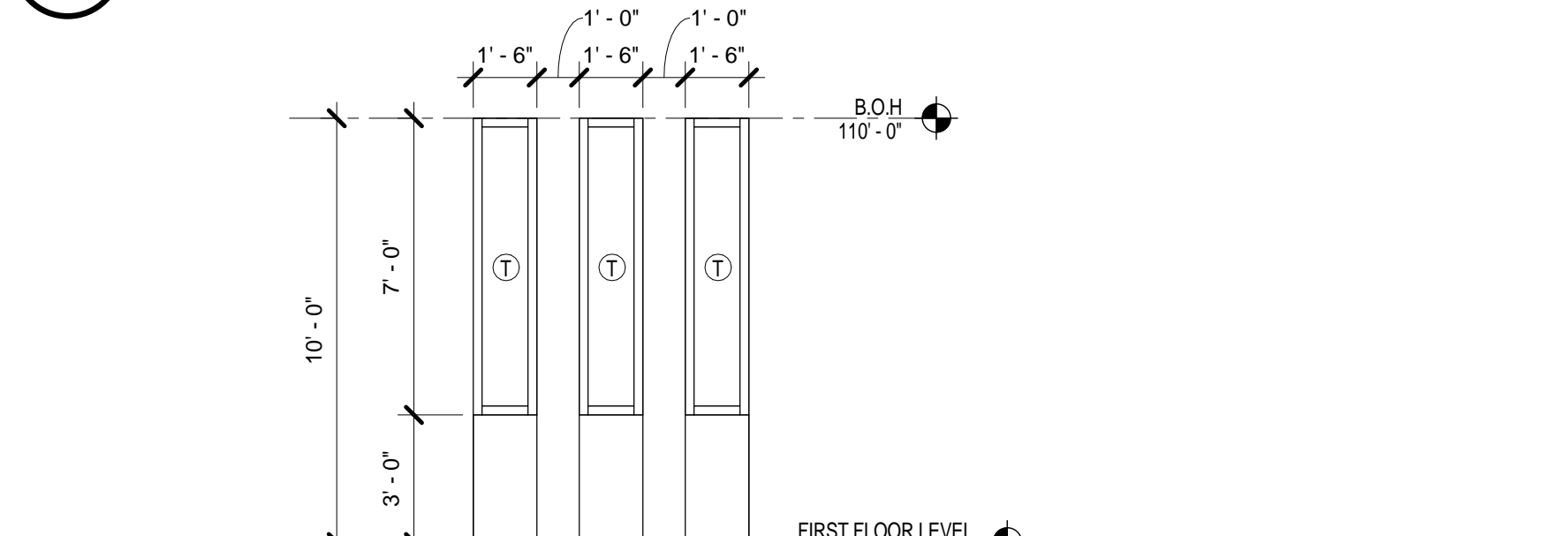
8 STOREFRONT ELEVATION-EAST SIDE SOUTH END  
1/4" = 1'-0"



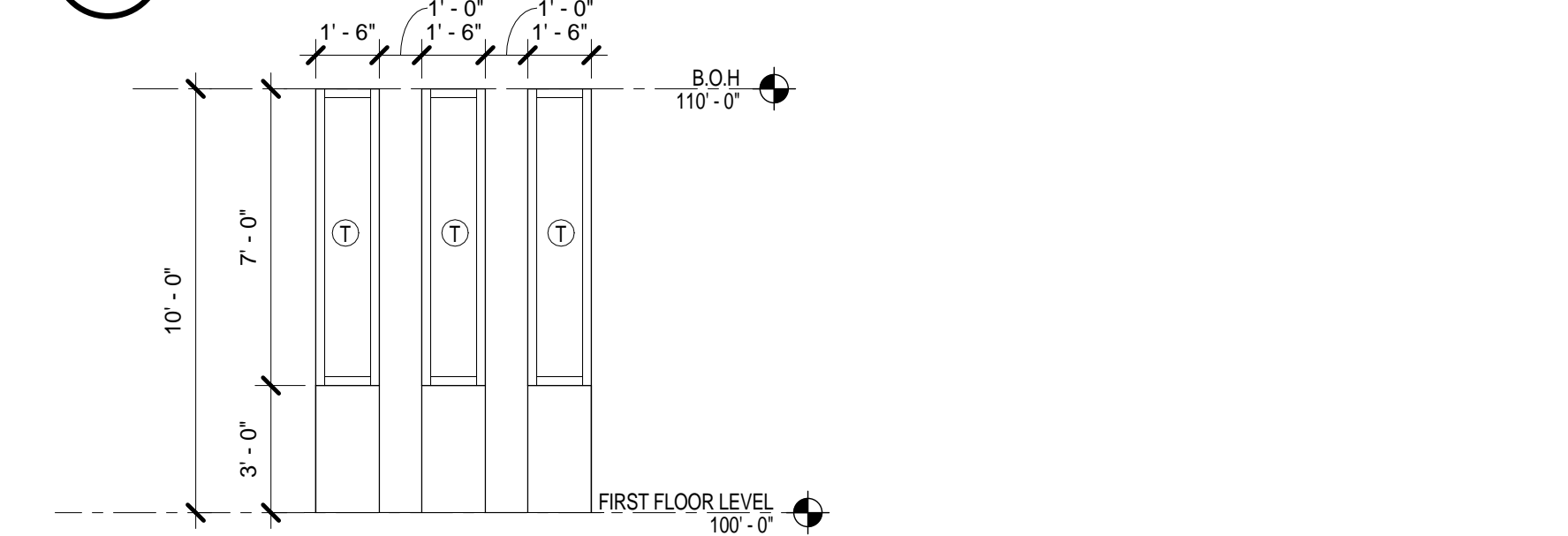
11 STOREFRONT ELEVATION - SOUTH CENTRAL  
1/4" = 1'-0"



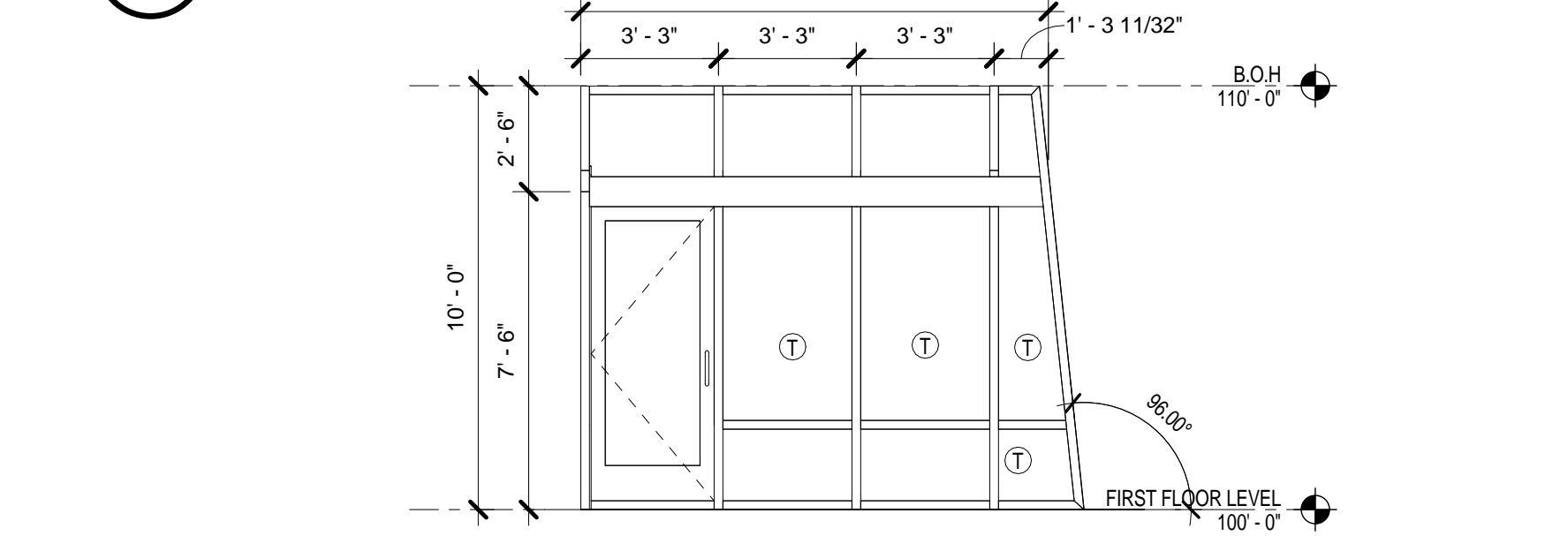
12 STOREFRONT ELEVATION - WEST SIDE SOUTH END  
1/4" = 1'-0"



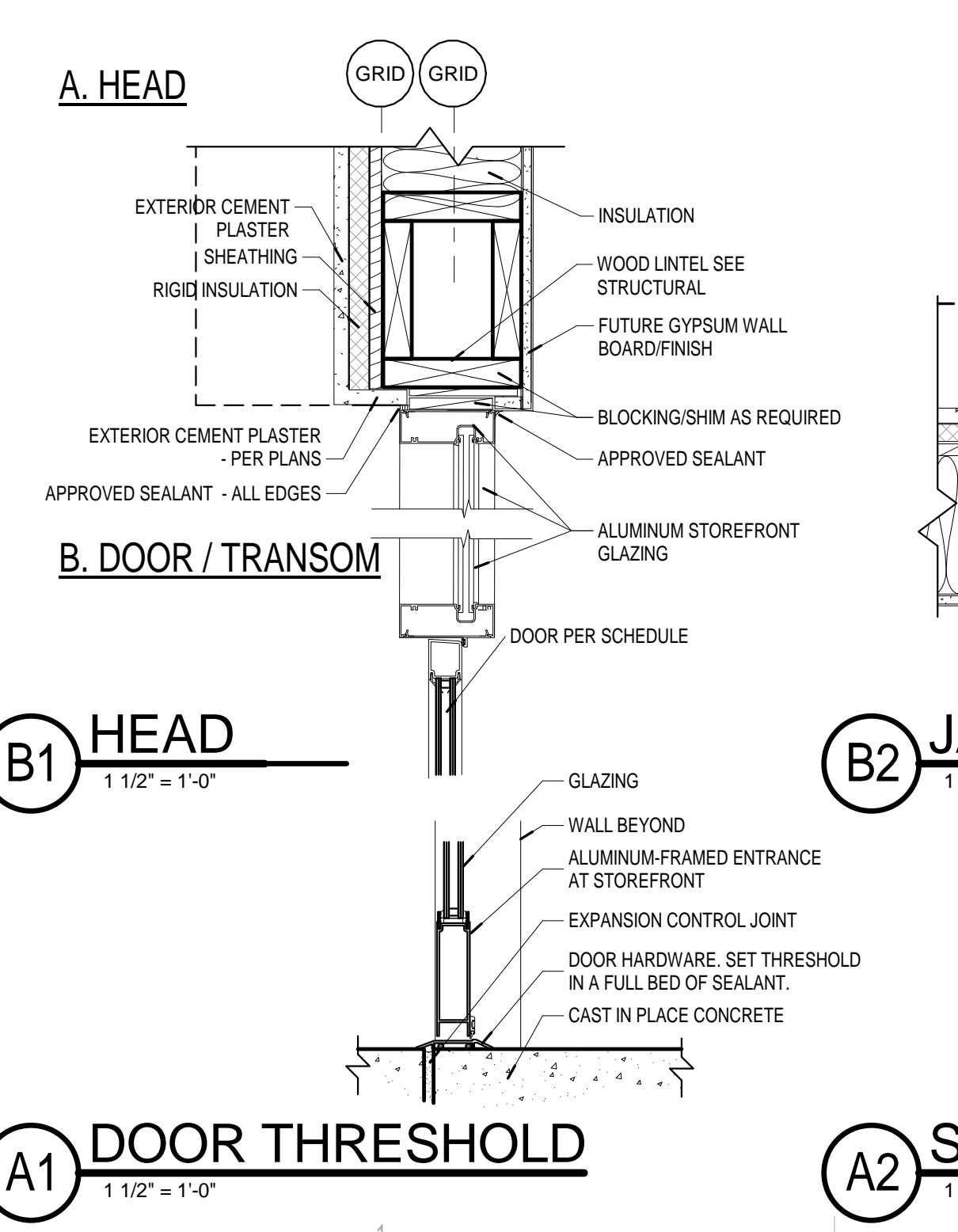
14 STOREFRONT ELEVATION-WEST SIDE NORTH END  
1/4" = 1'-0"



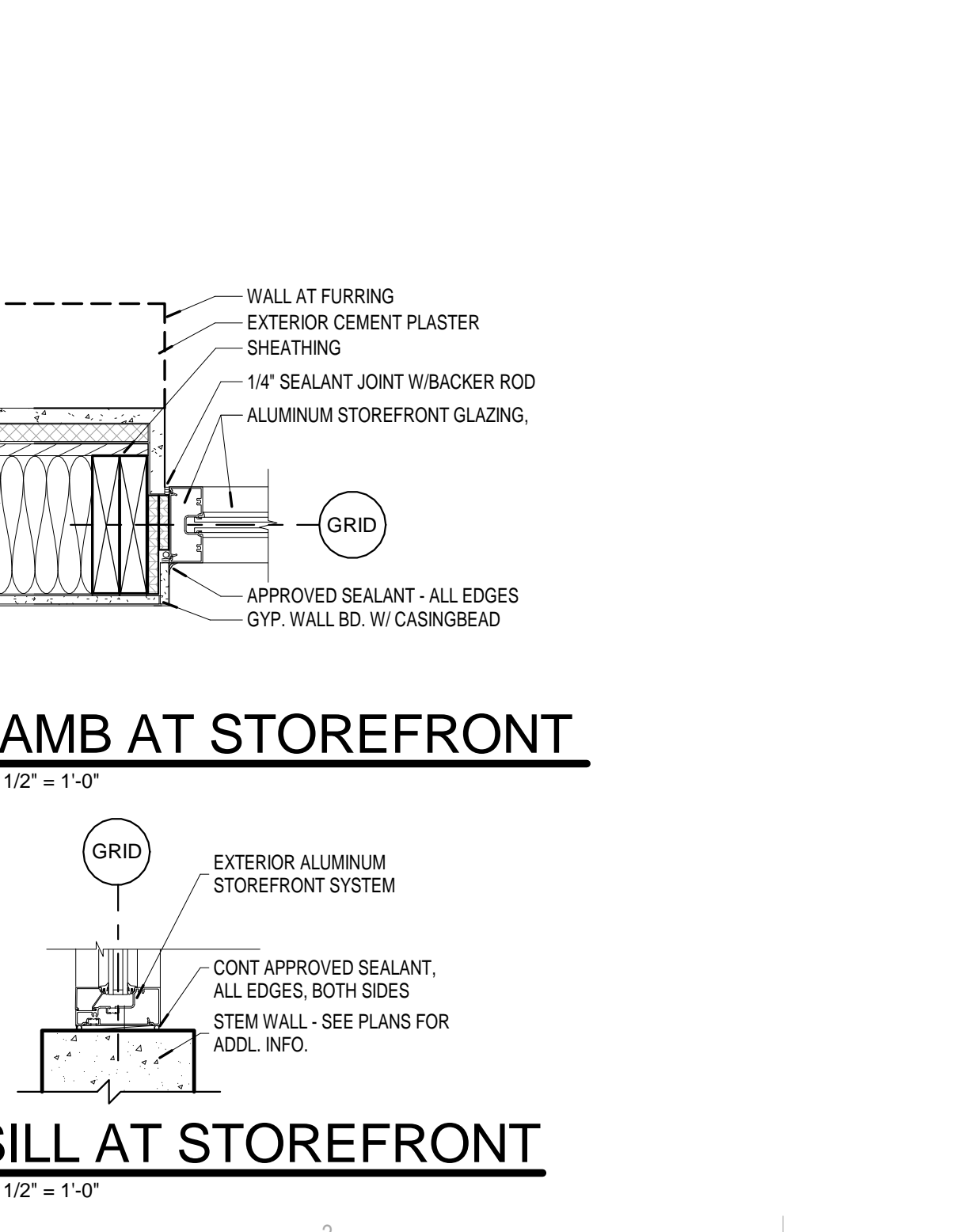
15 STOREFRONT ELEVATION - NORTH SIDE WEST END  
1/4" = 1'-0"



16 STOREFRONT ELEVATION - NORTH SIDE CENTER  
1/4" = 1'-0"



A1 DOOR THRESHOLD  
1 1/2" = 1'-0"



B1 HEAD  
1 1/2" = 1'-0"



B2 JAMB AT STOREFRONT  
1 1/2" = 1'-0"



A2 SILL AT STOREFRONT  
1 1/2" = 1'-0"

Make-up Name	Outdoor Substrate & Coating	Indoor Substrate & Coating	Transmittance	Reflection	U-Value	Solar Heat Gain Coefficient (SHGC)			
Default Make-up 01	SurQuest® 5M 68 on Clear (North America)	Clear (North America)	68	33	11	12	0.32	0.33	0.38
Default Make-up 01	Clear (North America)	Clear (North America)	81	—	—	—	—	—	—
LITE	Clear (North America)	Thickness = 1/4" = 6mm	—	—	—	—	—	—	—
GAP	100% Air, 3/8" = 9.5 mm	—	—	—	—	—	—	—	—
LITE	Clear (North America)	Thickness = 1/4" = 6mm	—	—	—	—	—	—	—
LITE	Clear (North America)	Thickness = 1/4" = 6mm	—	—	—	—	—	—	—
Total Unit = 0.817 ft / 25.192 mm		—	—	—	—	—	—	—	—
Indoors		—	—	—	—	—	—	—	—

GENERAL NOTES

- A. ALL INTERIOR GLAZING TO BE SINGLE PANE GLAZING, UNLESS NOTED OTHERWISE.
- B. FIELD VERIFY ALL ROUGH OPENING DIMENSIONS PRIOR TO FABRICATION.
- C. COORDINATE CRITICAL DIMENSIONS WITH MANUFACTURER.

LEGEND - SCHEDULE

ALUM	ALUMINUM
ANOD	ANODIZED
CCF	CLEAR COAT FINISH
Hx	HOLLOW METAL
PT	PAIN
STL	STEEL
SS	STAINLESS STEEL
LWD	WOOD
Hx	DEFENTION HOLLOW METAL

LEGEND - GLAZING TYPES

①	INSULATED GLAZING
②	TEMPERED GLAZING
③	INSULATED TEMPERED GLAZING
④	INSULATED SPANDREL GLASS
⑤	STOREFRONT

BUILDING ENVELOPE REQUIREMENT FENESTRATION

METAL FRAME WITH OR WITHOUT THERMAL BREAK	CURTAIN WALL STOREFRONT U-FACTOR	ENTRANCE DOOR U-FACTOR	ALL OTHER U-FACTOR
0.50	0.85	0.55	0.55

**STUDIO**  
**SW ARCHITECTS**

STUDIO SOUTHWEST ARCHITECTS, INC.  
2101 Mountain Rd. NW, Albuquerque, NM 87104  
505.843.9639 Fax 505.843.9683  
Web Site: www.studioswarch.com  
Email: mail@studioswarch.com

© 2014, Studio Southwest Architects, Inc. Duplication or reproduction by any means without the express written consent of Studio Southwest Architects, Inc. is a violation of federal and international law. The information contained in this document is the intellectual property of Studio Southwest, Inc. and all rights thereto are Reserved. For exceptions refer to the Owner-Architect Agreement.

CONSULTANTS

Architect	Engineer

**DRB SUBMITTAL**

AIS PAD 1 - BUILDING B SHELL CONSTRUCTION

2300 12TH STREET  
BUILDING B  
ALBUQUERQUE NM 87104

No	Date	Description
Revision Schedule		

ISSUE: SD  
PROJECT NUMBER: 1513  
FILE: 1513A-601.RVT  
DRAWN BY: DSJ  
CHECKED BY: RH  
DATE: 01/18/16

SHEET TITLE  
**STOREFRONT ELEVATIONS, DOOR SCHED., DOOR & FRAME TYPES, SIGN TYPES**  
**A-601**