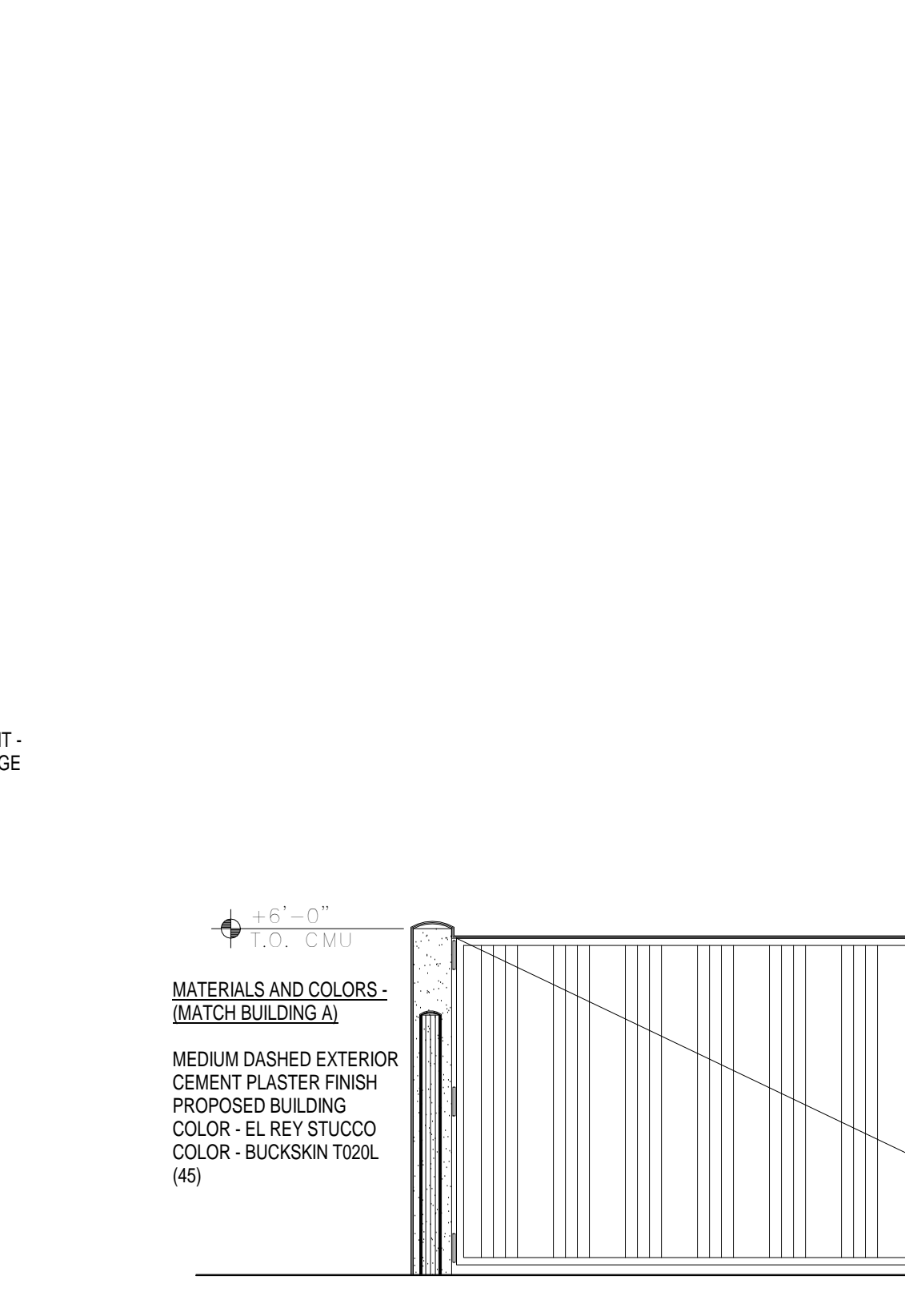
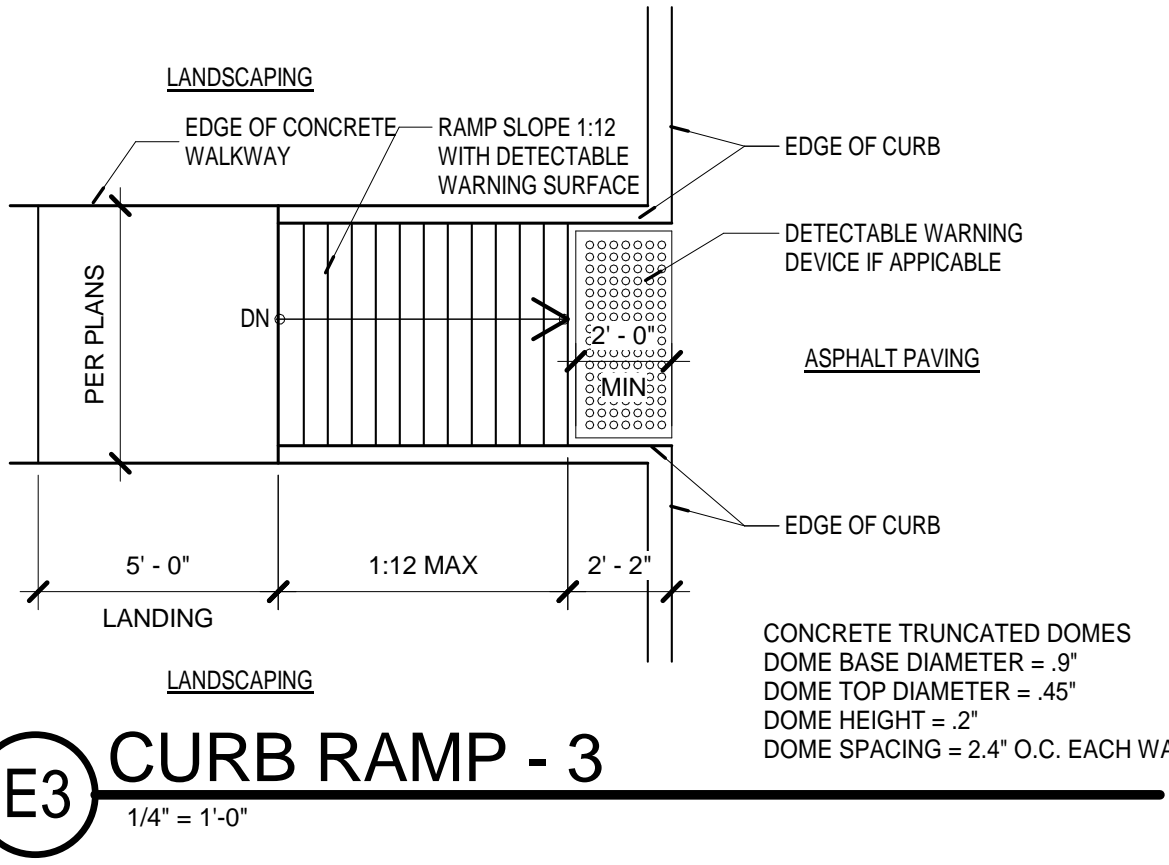


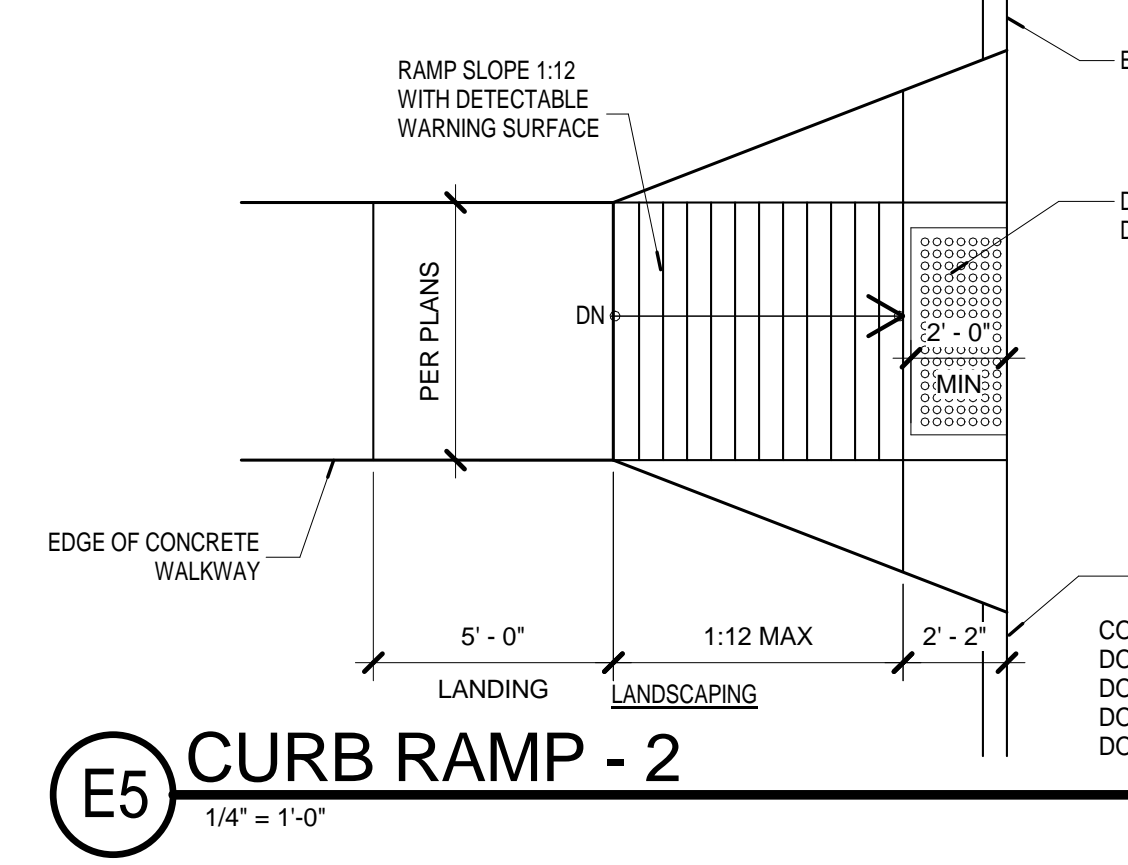
E1 TRASH ENCLOSURE WALL  
3/4\"/>



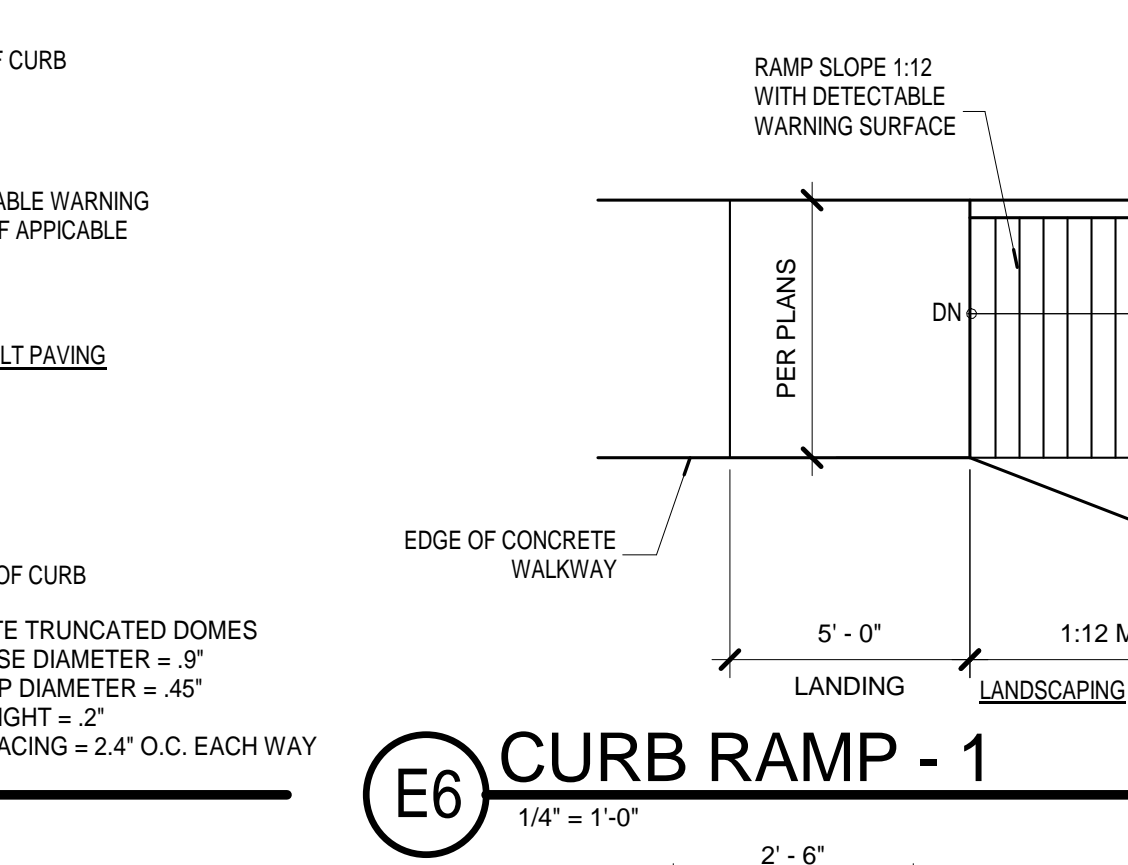
E2 ENCLOSURE ELEVATION  
3/8\"/>



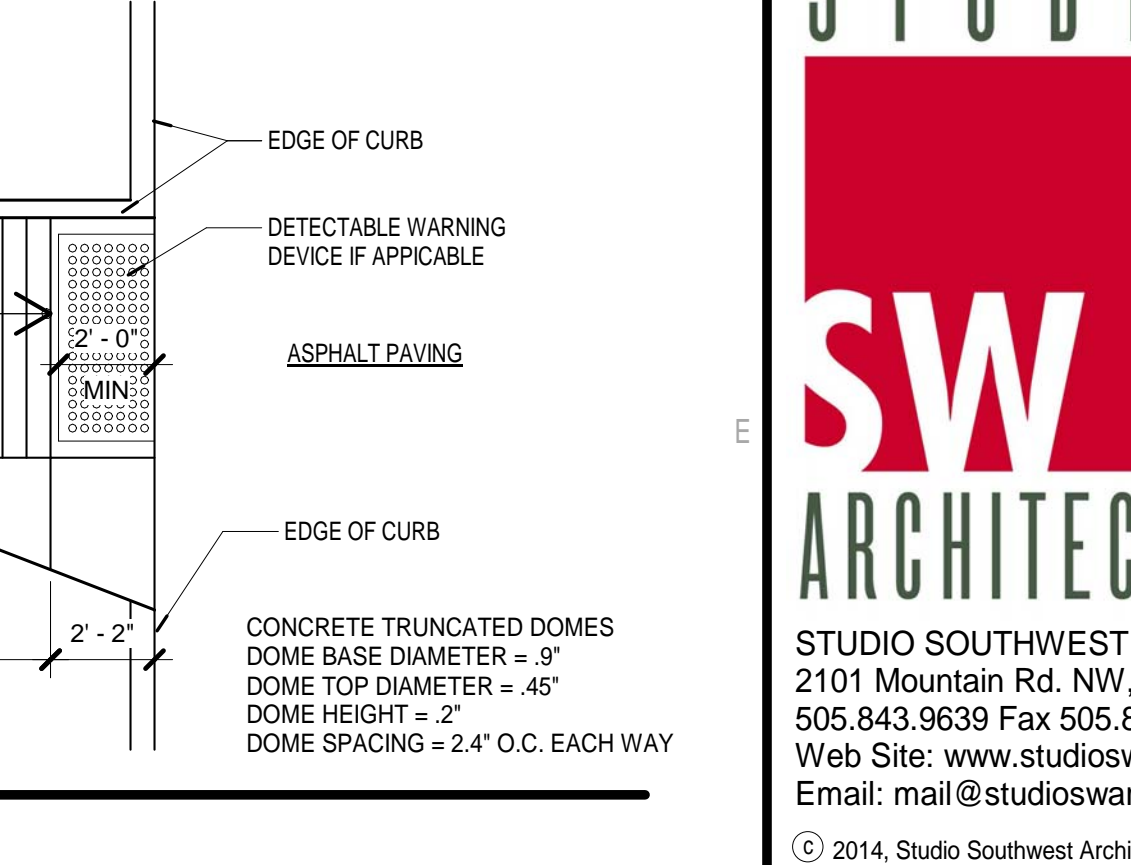
E3 CURB RAMP - 3  
1/4\"/>



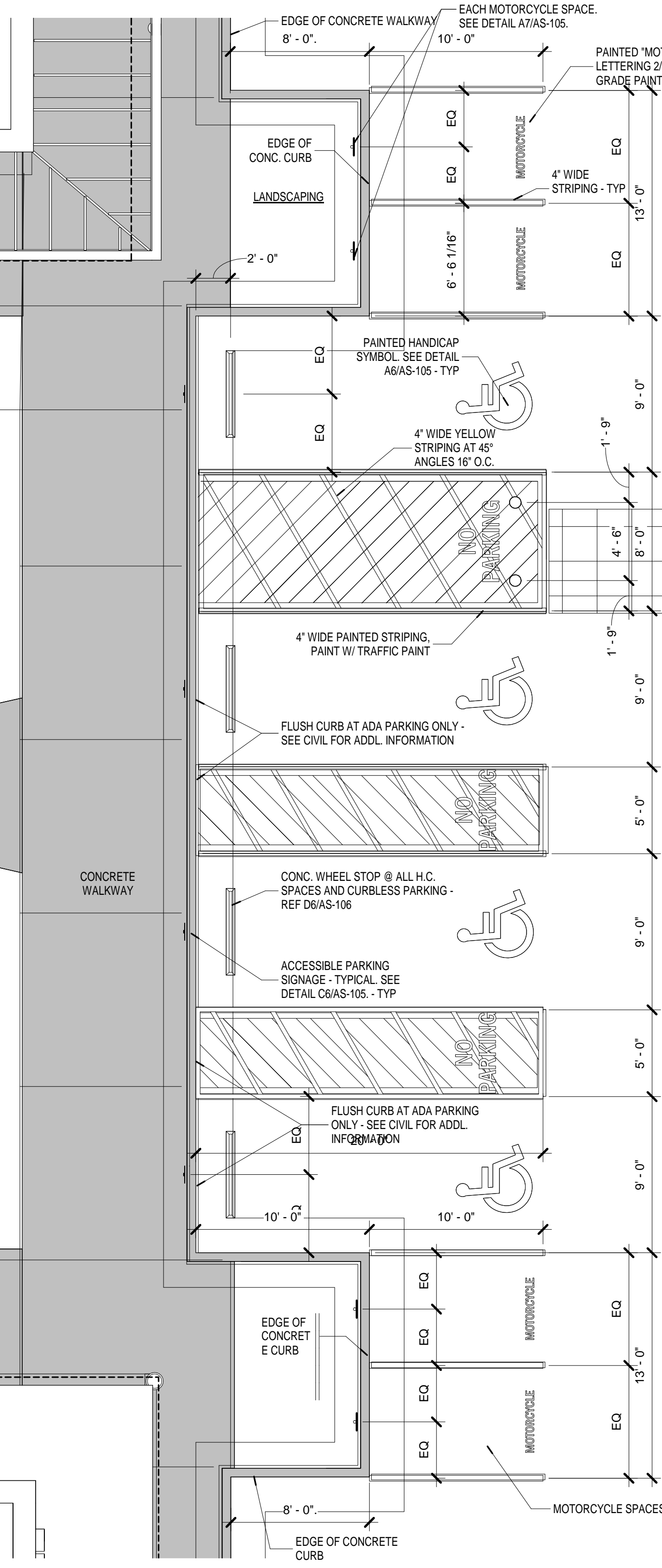
E5 CURB RAMP - 2  
1/4\"/>



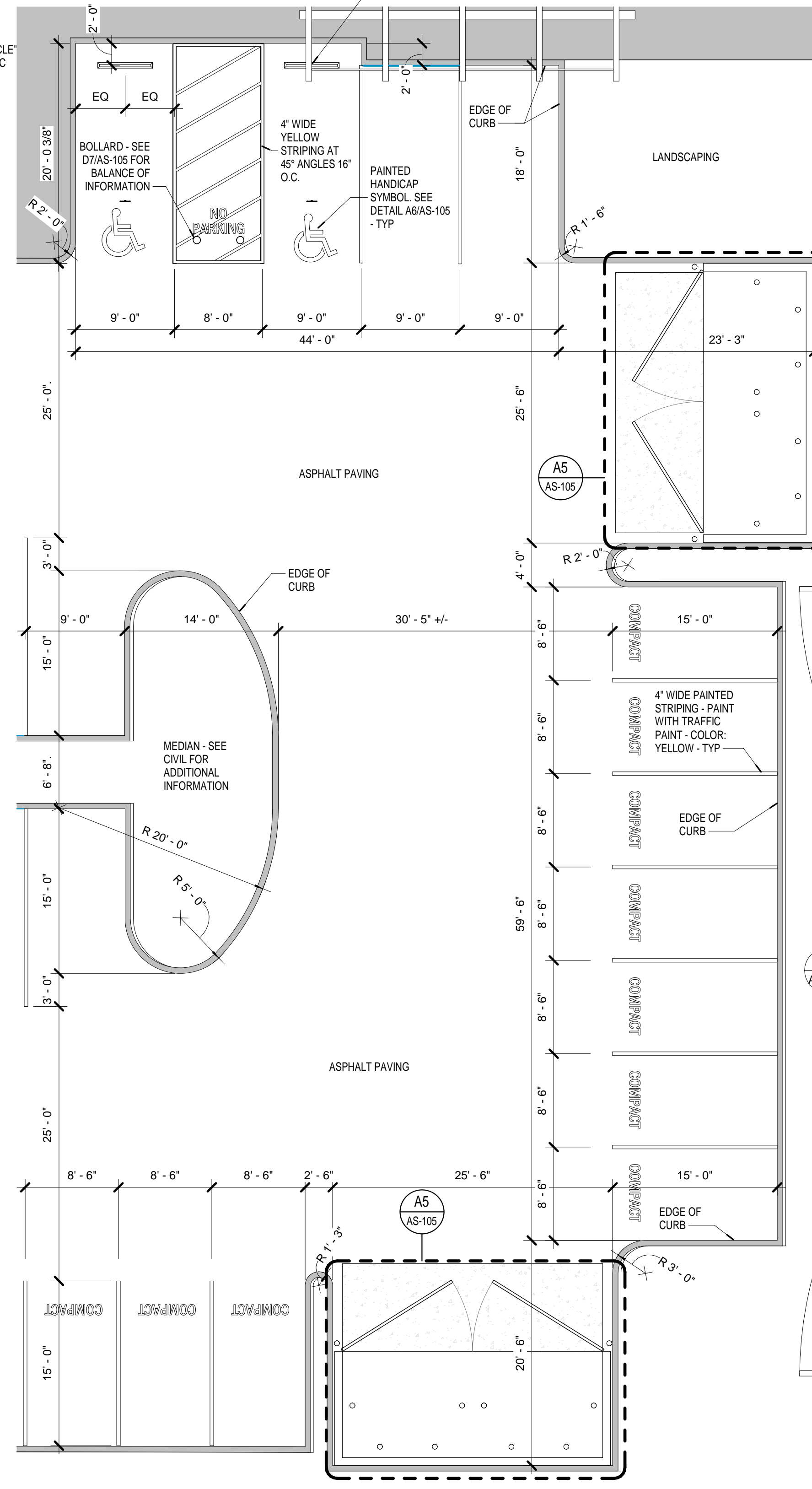
E6 CURB RAMP - 1  
1/4\"/>



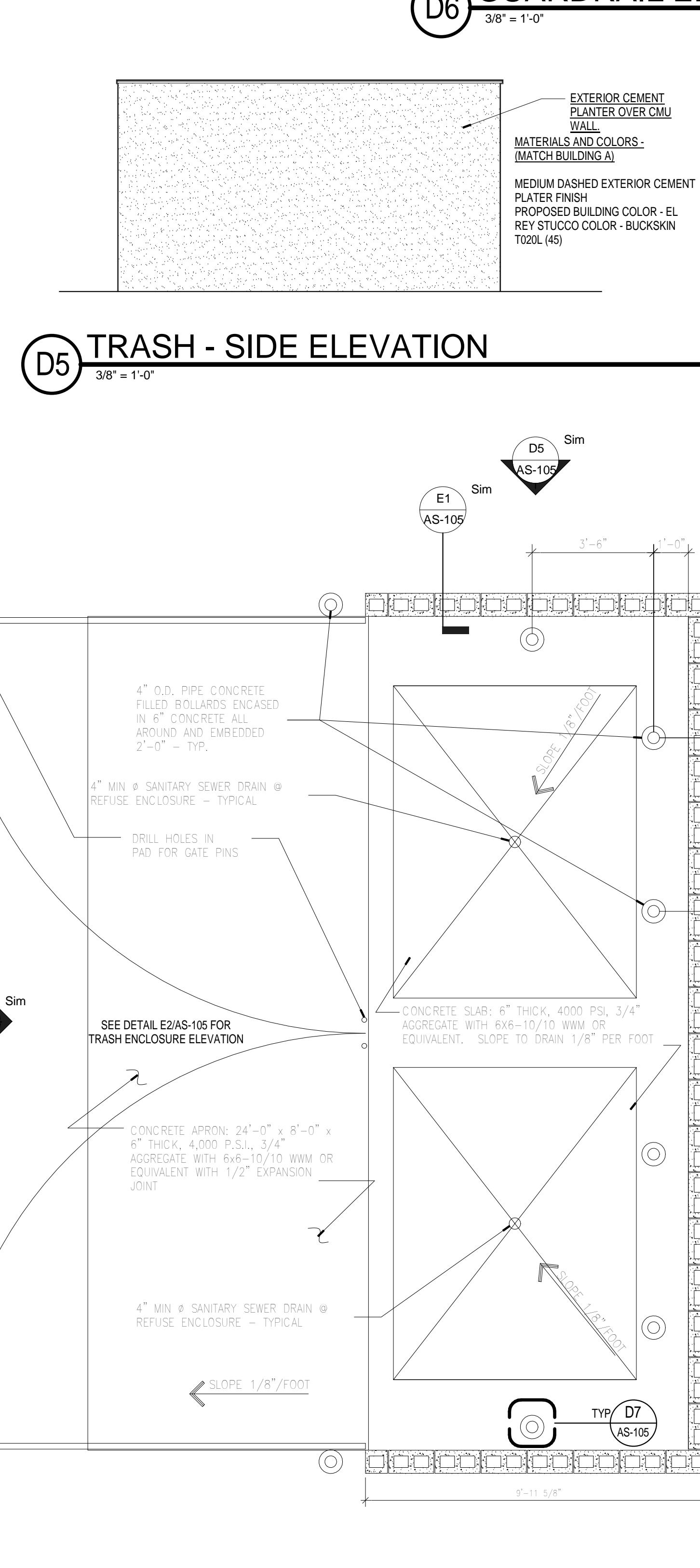
E7 CURB RAMP - 1  
1/4\"/>



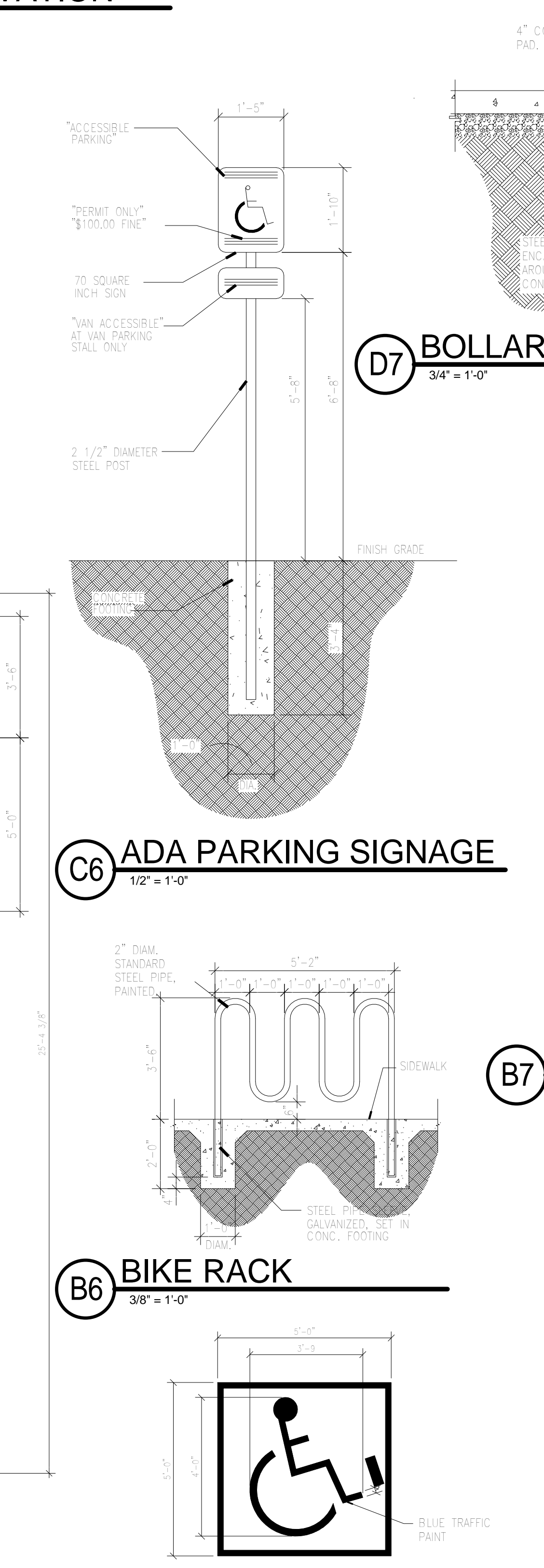
A1 (E) HANDICAP PARKING STALLS  
3/16\"/>



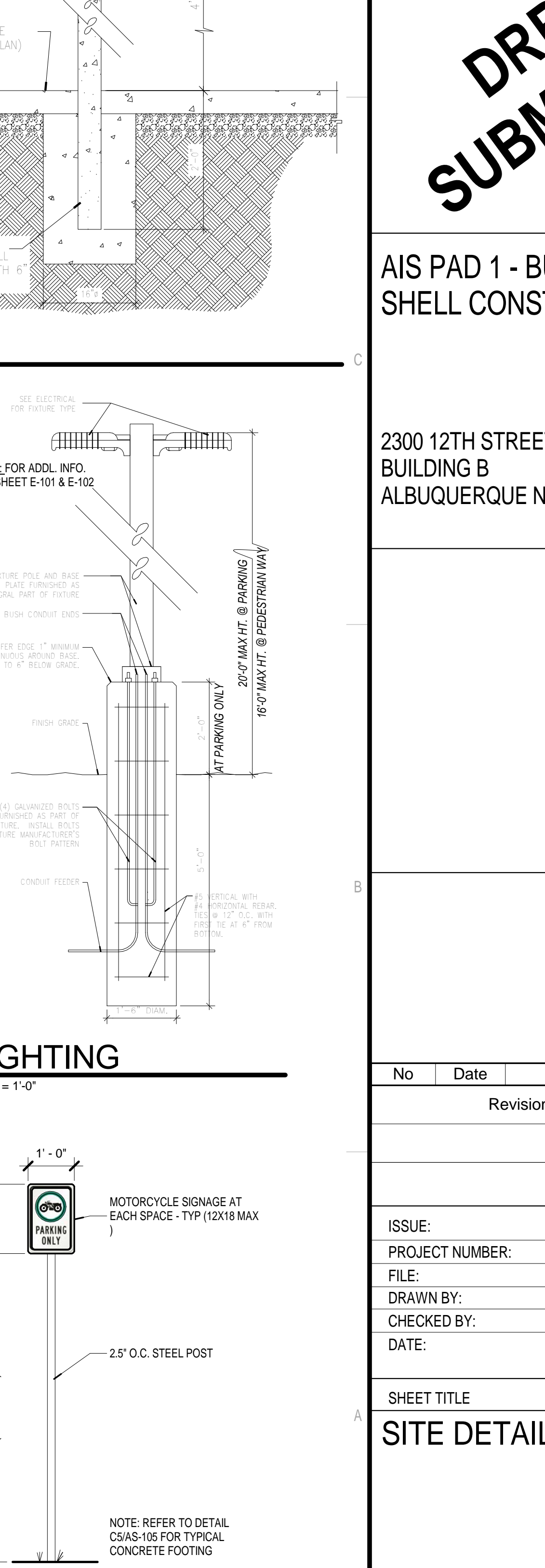
A3 (E) TRASH ENCLOSURE AT PARKING  
1/8\"/>



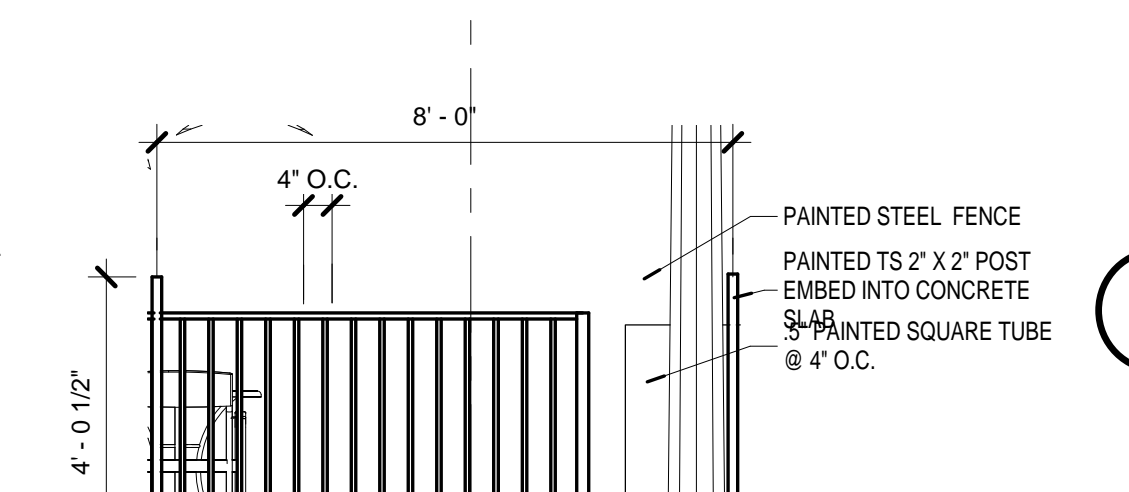
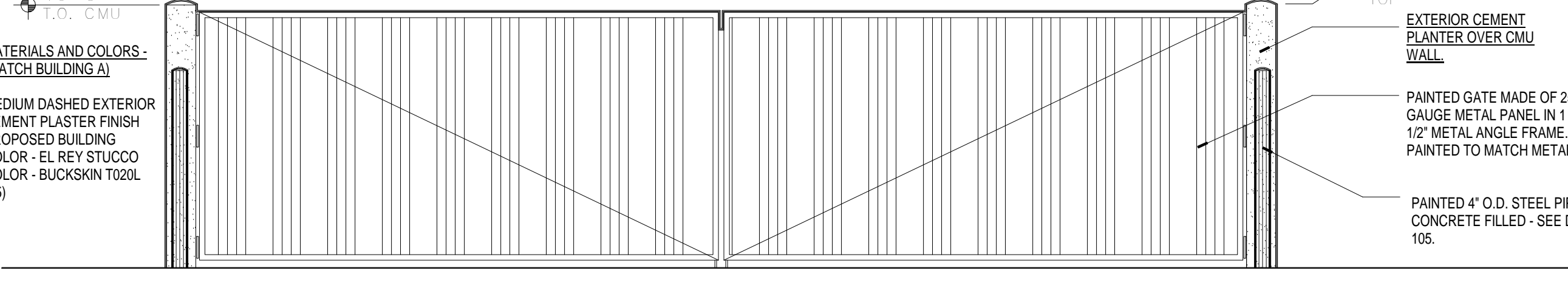
A5 (E) TRASH ENCLOSURE PLAN  
3/8\"/>



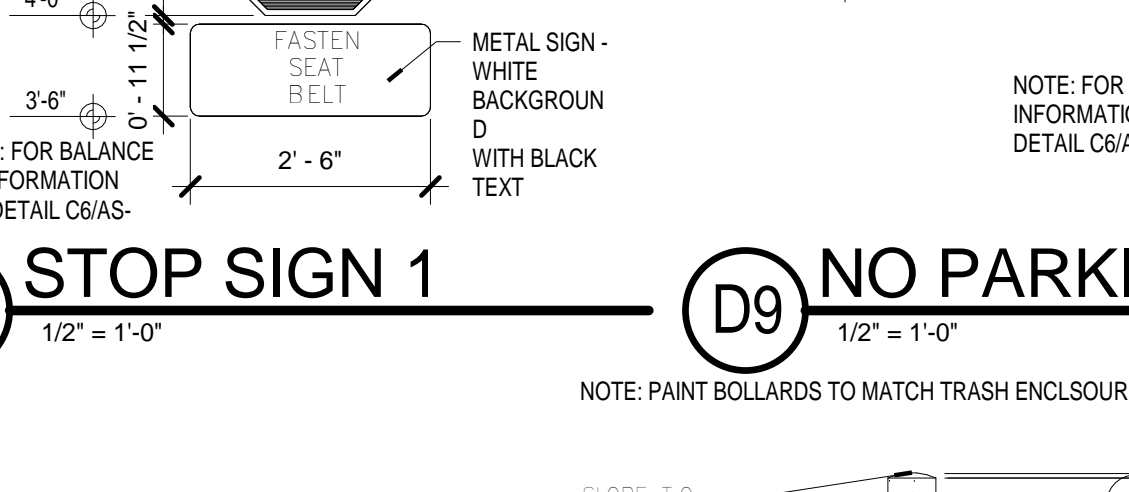
A6 ADA SIGNAGE AT STALL  
3/8\"/>



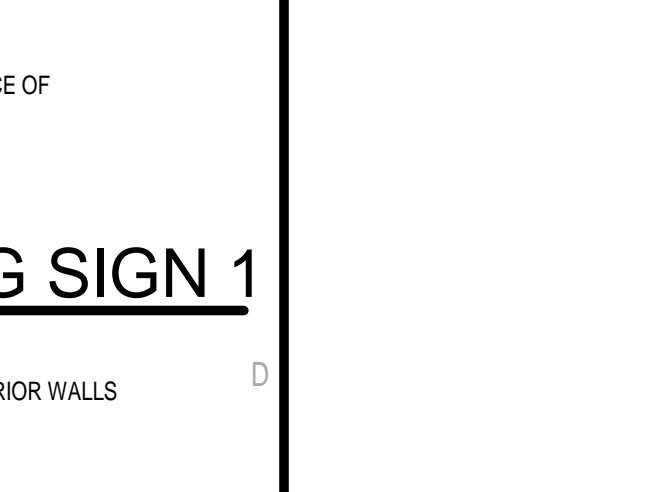
A7 MOTO SIGN  
1/2\"/>



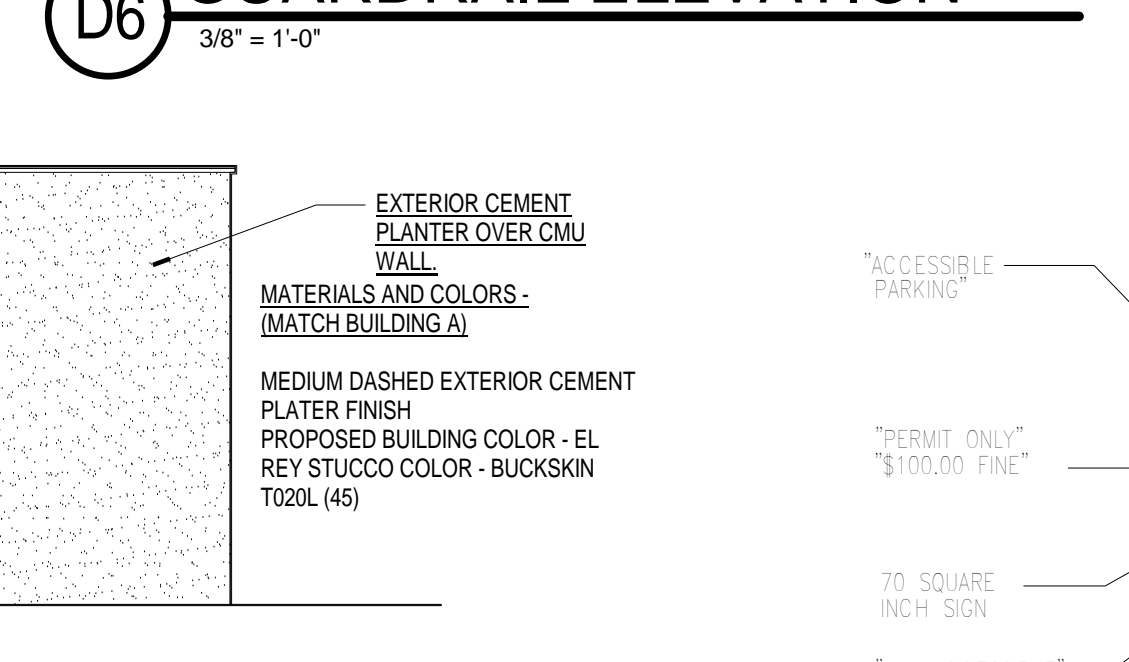
E5 CURB RAMP - 2  
1/4\"/>



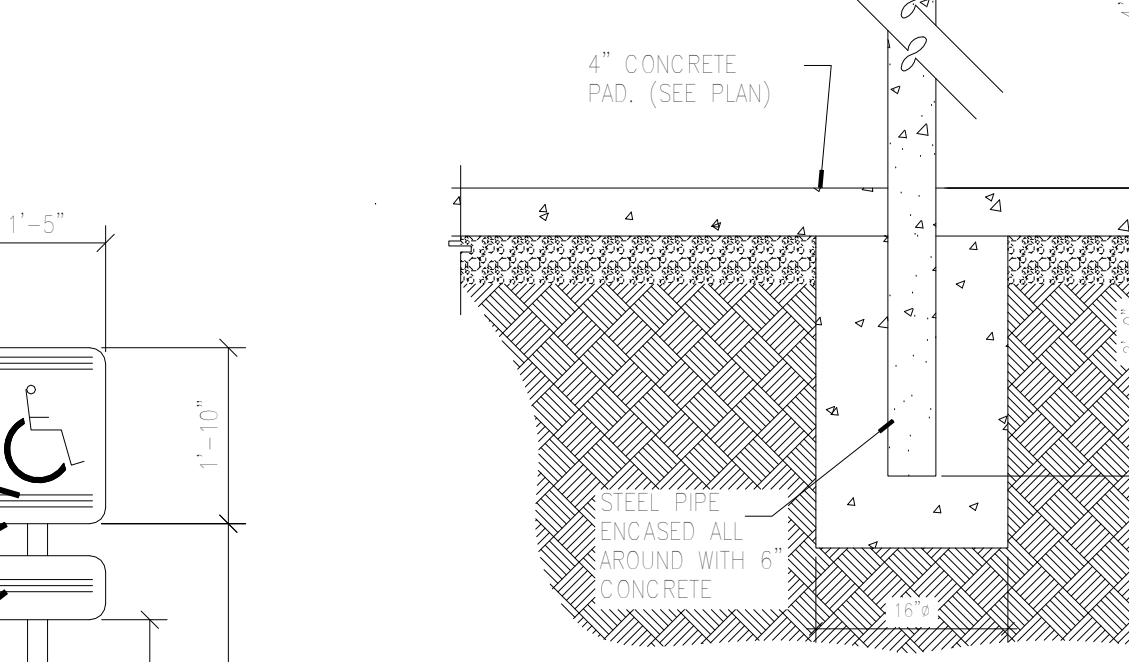
D8 STOP SIGN 1  
1/2\"/>



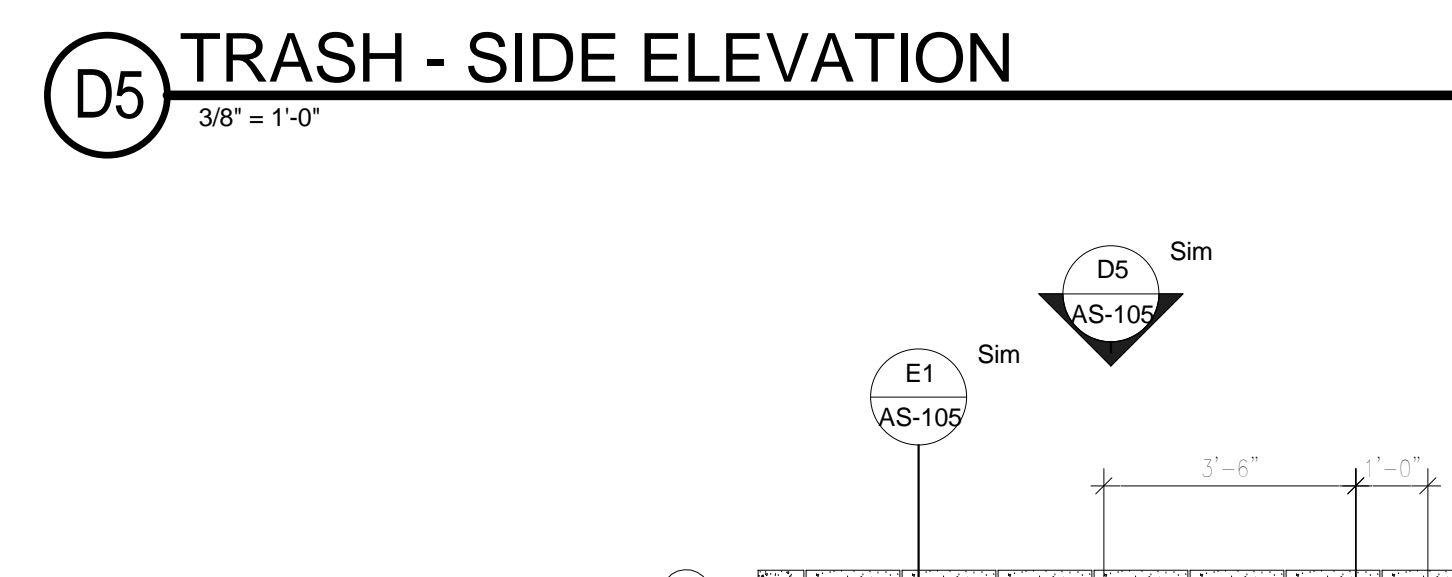
D9 NO PARKING SIGN 1  
1/2\"/>



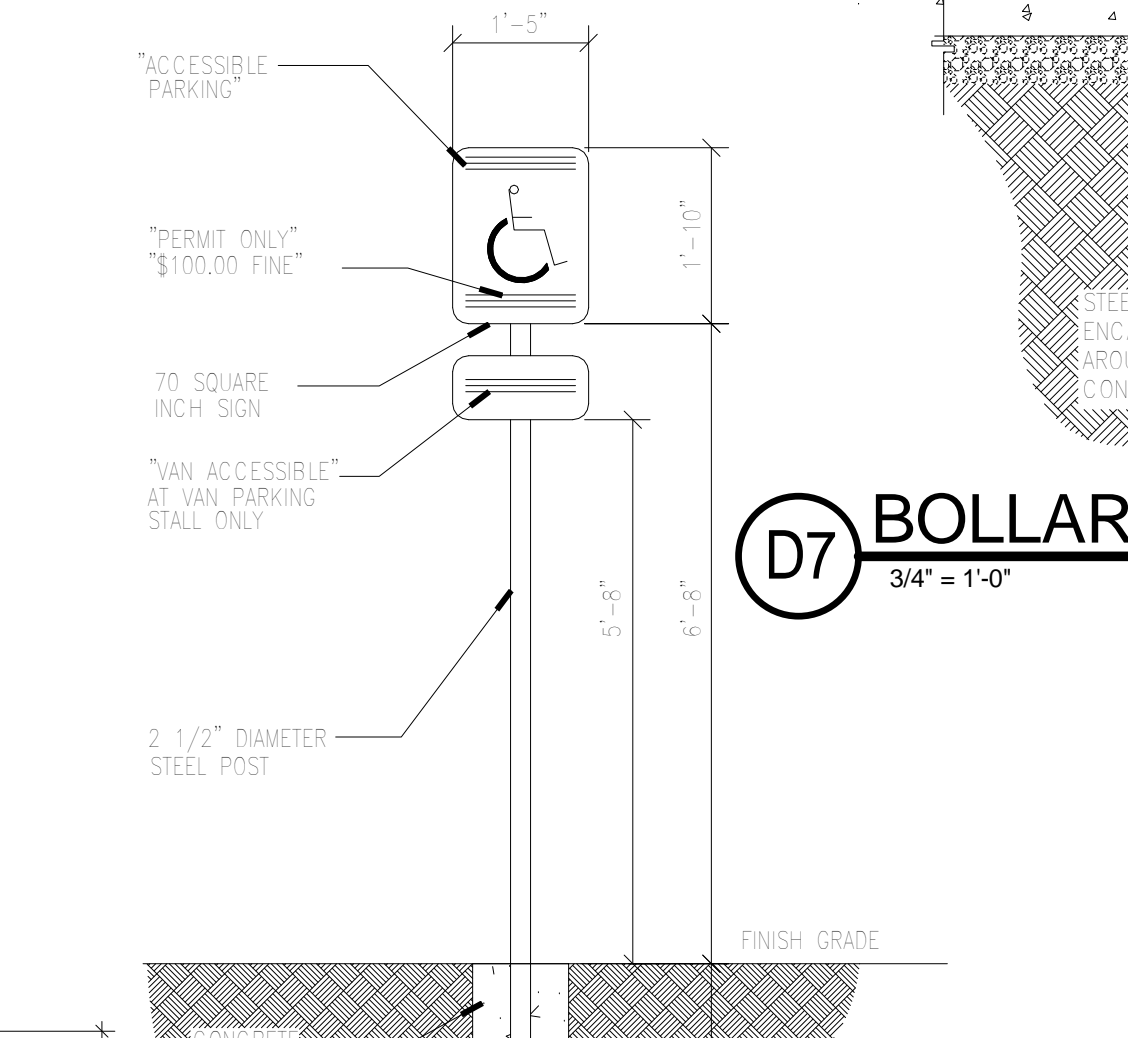
D6 GUARDRAIL ELEVATION  
3/8\"/>



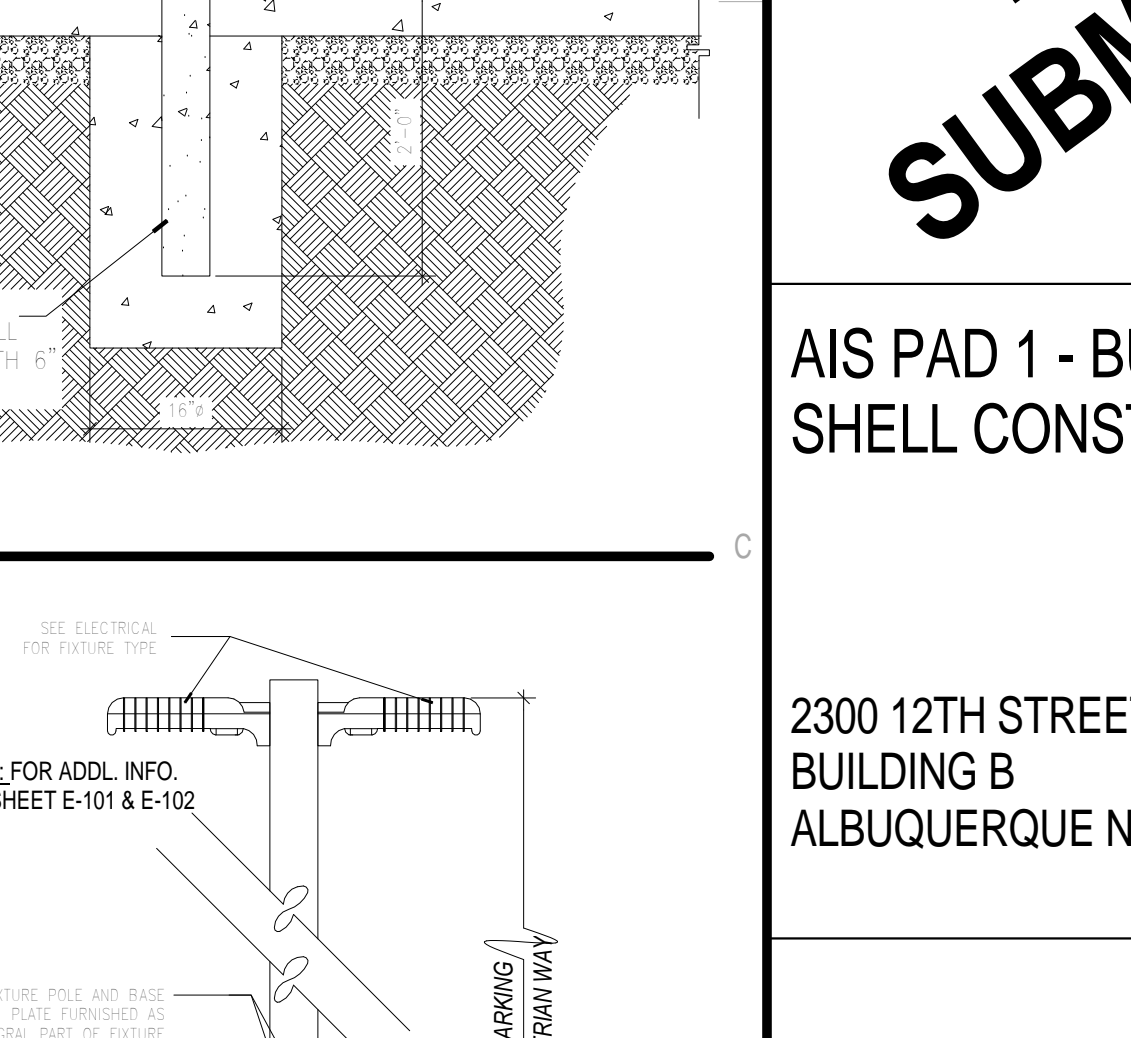
D7 BOLLARD  
3/4\"/>



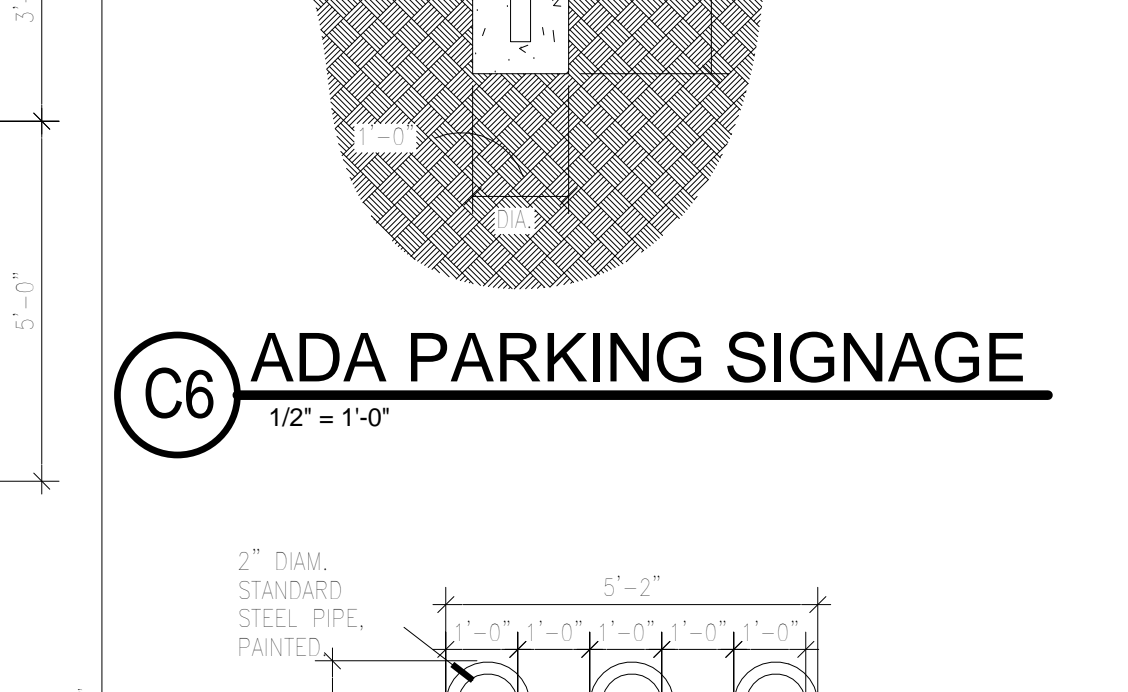
D5 TRASH - SIDE ELEVATION  
3/8\"/>



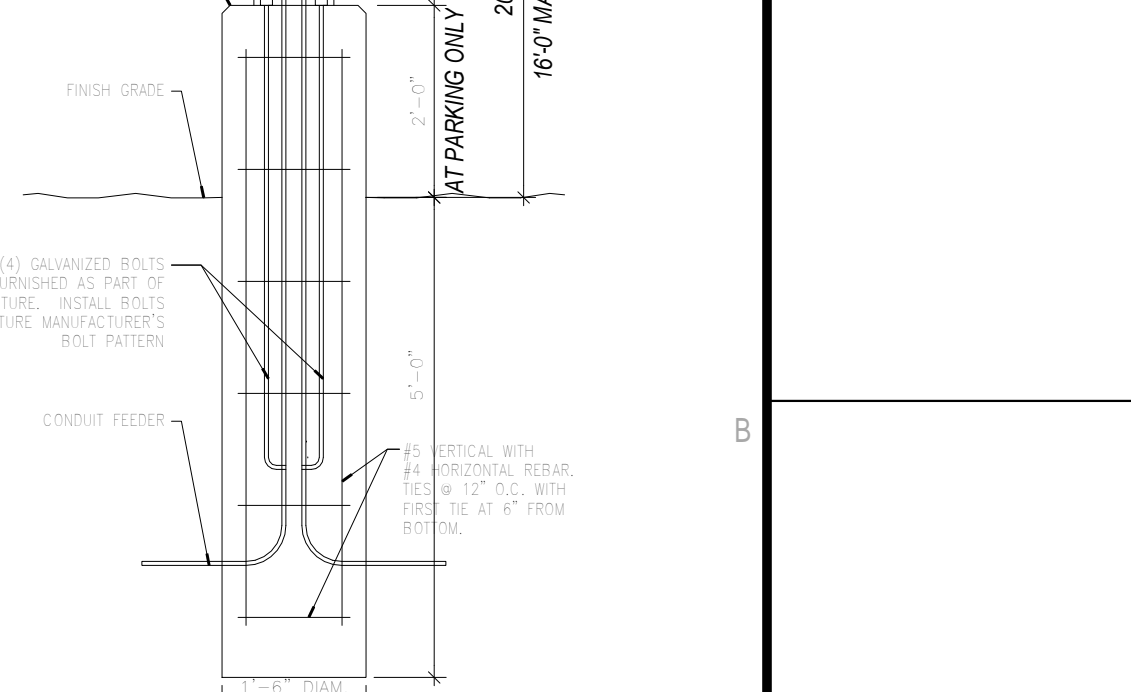
C6 ADA PARKING SIGNAGE  
1/2\"/>



B7 LIGHTING  
1/2\"/>



B6 BIKE RACK  
3/8\"/>



B7 LIGHTING  
1/2\"/>



STUDIO SOUTHWEST ARCHITECTS, INC.  
2101 Mountain Rd. NW, Albuquerque, NM 87104  
505.843.9639 Fax 505.843.9683  
Web Site: www.studioswarch.com  
Email: mail@studioswarch.com

© 2014, Studio Southwest Architects, Inc. Duplication or reproduction by any means without the express written consent of Studio Southwest Architects, Inc. is a violation of federal and international law. The information contained in this document is the intellectual property of Studio Southwest, Inc. and all rights thereto are reserved. For exceptions refer to the Owner-Architect Agreement.

CONSULTANTS

Architect Engineer

**DRB SUBMITTAL**

AIS PAD 1 - BUILDING B SHELL CONSTRUCTION

2300 12TH STREET  
BUILDING B  
ALBUQUERQUE NM 87104

No	Date	Description
Revision Schedule		

ISSUE:	SD
PROJECT NUMBER:	1513
FILE:	1513AS-105.RVT
DRAWN BY:	DSJ
CHECKED BY:	RH
DATE:	01/18/16

SHEET TITLE  
**SITE DETAILS**

**AS-105**