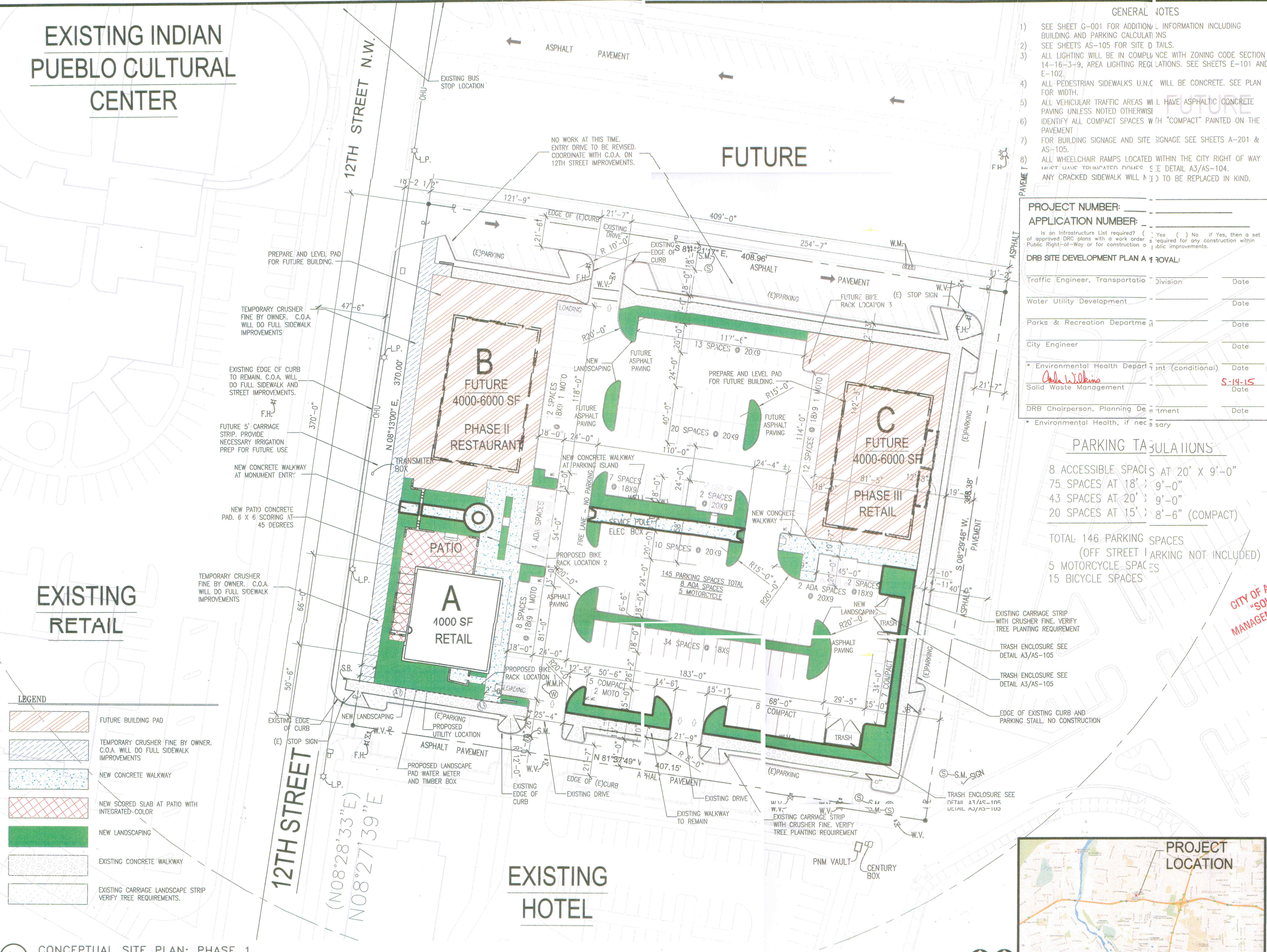


EXISTING INDIAN PUEBLO CULTURAL CENTER

EXISTING RETAIL

EXISTING HOTEL

FUTURE



LEGEND

	FUTURE BUILDING PAD
	TEMPORARY CRUSHER FINE BY OWNER. C.O.A. WILL DO FULL SIDEWALK IMPROVEMENTS
	NEW CONCRETE WALKWAY
	NEW SCORED SLAB AT PATIO WITH INTEGRATED-COLOR
	NEW LANDSCAPING
	EXISTING CONCRETE WALKWAY
	EXISTING CARRIAGE LANDSCAPE STRIP VERIFY TREE REQUIREMENTS.

- GENERAL NOTES**
- 1) SEE SHEET G-001 FOR ADDITIONAL INFORMATION INCLUDING BUILDING AND PARKING CALCULATIONS
 - 2) SEE SHEETS AS-105 FOR SITE DETAILS.
 - 3) ALL LIGHTING WILL BE IN COMPLIANCE WITH ZONING CODE SECTION 14-16-3-9, AREA LIGHTING REGULATIONS. SEE SHEETS E-101 AND E-102.
 - 4) ALL PEDESTRIAN SIDEWALKS U.N.C WILL BE CONCRETE. SEE PLAN FOR WIDTH.
 - 5) ALL VEHICULAR TRAFFIC AREAS WILL HAVE ASPHALTIC CONCRETE PAVING UNLESS NOTED OTHERWISE.
 - 6) IDENTIFY ALL COMPACT SPACES WITH "COMPACT" PAINTED ON THE PAVEMENT.
 - 7) FOR BUILDING SIGNAGE AND SITE SIGNAGE SEE SHEETS A-201 & AS-105.
 - 8) ALL WHEELCHAIR RAMPS LOCATED WITHIN THE CITY RIGHT OF WAY MUST HAVE TOIMATED DIMENSIONS SEE DETAIL A3/AS-104. ANY CRACKED SIDEWALK WILL BE REPLACED IN KIND.

PROJECT NUMBER: _____
APPLICATION NUMBER: _____

Is an Infrastructure List required? () Yes () No If yes, then a set of approved DRG plans with a work order is required for any construction within Public Right-of-Way or for construction of public improvements.

DRB SITE DEVELOPMENT PLAN APPROVAL:

Traffic Engineer, Transportation Division	Date
Water Utility Development	Date
Parks & Recreation Department	Date
City Engineer	Date
* Environmental Health Department (conditional)	Date
<i>Chela W. Olejnik</i> Solid Waste Management	5-14-15 Date
DRB Chairperson, Planning Department	Date
* Environmental Health, if necessary	

PARKING CALCULATIONS

8 ACCESSIBLE SPACES AT 20' X 9'-0"
75 SPACES AT 18' X 9'-0"
43 SPACES AT 20' X 9'-0"
20 SPACES AT 15' X 8'-6" (COMPACT)
TOTAL: 146 PARKING SPACES
(OFF STREET PARKING NOT INCLUDED)
5 MOTORCYCLE SPACES
15 BICYCLE SPACES



STUDIO SOUTHWEST ARCHITECTS, INC.
 2101 Mountain Rd. NW, Albuquerque, NM 87104
 505.843.9639 fax 505.843.9683
 Web Site: www.studioswarch.com
 E-Mail: mail@studioswarch.com

CONSULTANTS

Architect	Engineer
-----------	----------

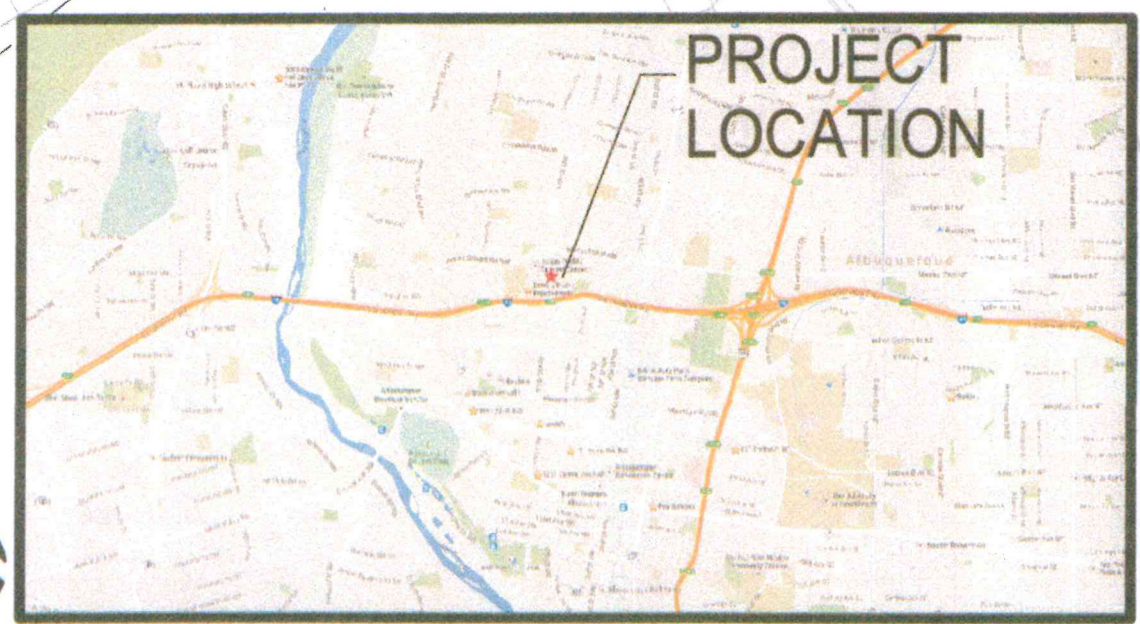
DRB SUBMITTAL

AIS MASTER PLAN PHASE 1

**CITY OF ALBUQUERQUE
 "SOLID WASTE"
 MANAGEMENT DEPARTMENT
 APPROVED**

2400 12TH STREET
 ALBUQUERQUE NM 87104

MARK	DATE	DESCRIPTION
ISSUE:		DRB
PROJECT NO:		1513
CAD DWG FILE:		1513 AS-101.RVT
DRAWN BY:		DSJ
CHECKED BY:		RH
DATE:		04/20/2015



(A1) CONCEPTUAL SITE PLAN: PHASE 1
 SCALE 1" = 30'



AS-101