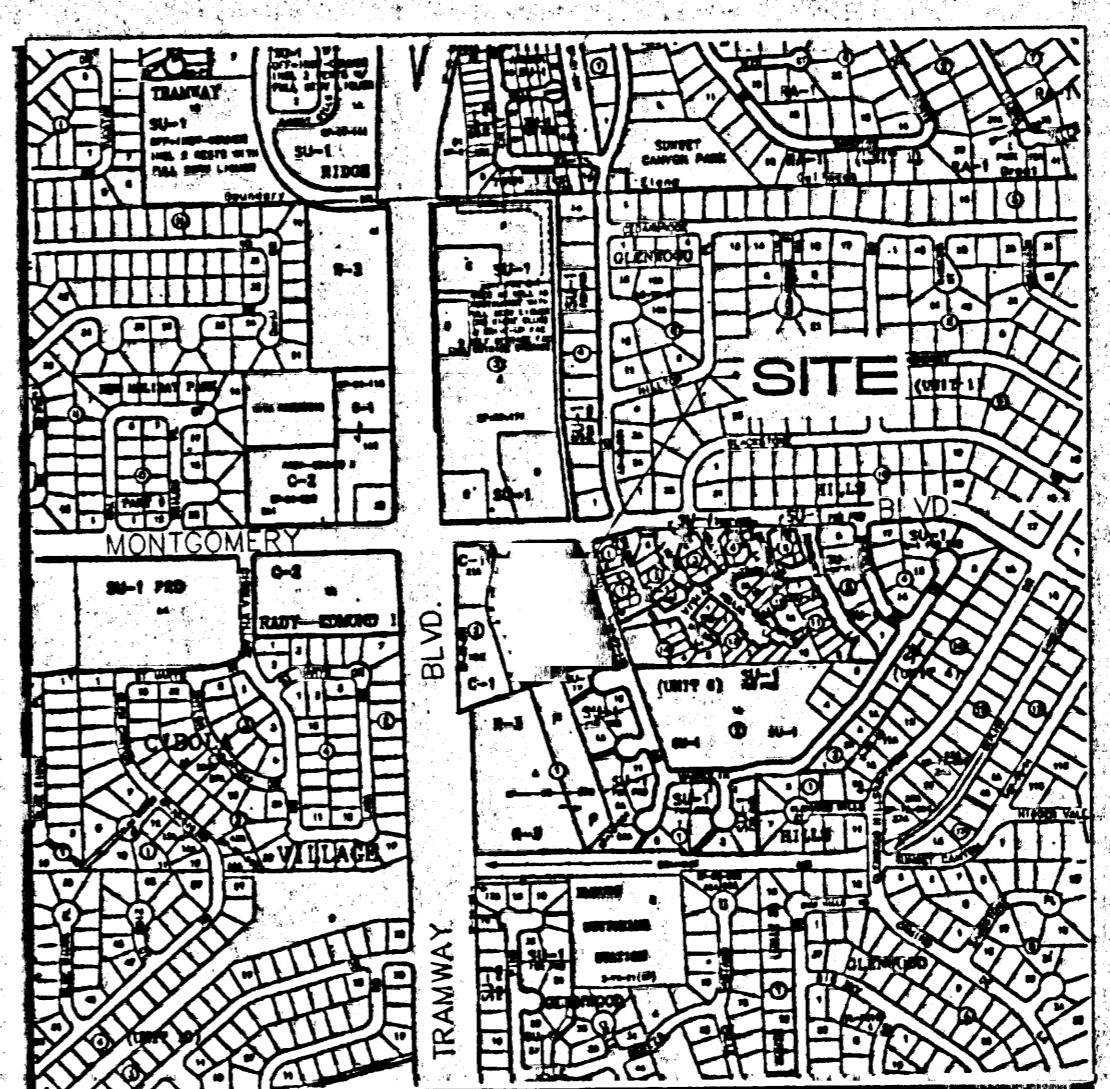


1 Site Plan
1" = 20'-0"
0 10' 20'



2 Vicinity Map
10RB-98.DWG
0 125' 250' 500'

THIS AREA 1.38
ACRES UNDEVELOPED
THIS PHASE

Project # 1000655 / 00450 0000 00929

Development Review Board DRB - 99-296

Site Development Plan for Z-99-72
Building Permit

THIS SITE DEVELOPMENT PLAN IS CONSISTENT WITH THE PLAN APPROVED AT THE JUNE 17TH 1999 ENVIRONMENTAL PLANNING COMMISSION HEARING.

Abdul J. Park 10-27-99
TRAFFIC ENGINEER, TRANSPORTATION DIVISION DATE

Jim Colgan 4-17-00
CITY ENGINEER/AM/CA DATE

Bridgette A. Bringham 10-27-99
PUBLIC WORKS, UTILITY DIVISION DATE

Edward G. Stang 10-27-99
DESIGN AND DEVELOPMENT DEPARTMENT, PARKS AND RECREATION DATE

John J. ... 8/31/00
CITY PLANNER, PLANNING DIVISION DATE

Project Data Police Substation & Transit Park and Ride:

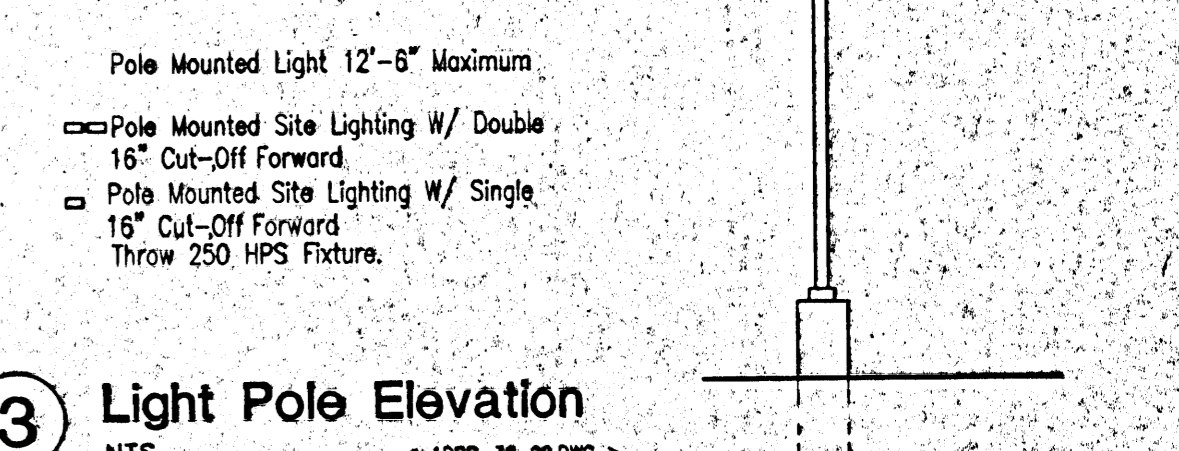
LEGAL DESCRIPTION: LOTS 3A AND 4, BLOCK 2 GLENWOOD HILLS, ON MONTGOMERY BETWEEN SPANISH BIT AND LANDAU DRIVE, ZONE ATLAS PAGE- G-23-Z.

PROPOSED USES
SU-1 ALBUQUERQUE POLICE AND COMMUNITY SUBSTATION 4,700 S.F.
CITY OF ALBUQUERQUE, TRANSIT DEPARTMENT PARK AND RIDE

PARKING REQUIREMENTS
APD COMMUNITY SUBSTATION
Required Parking: 4,700sf/200 23 spaces
Parking Provided: 23 spaces
Required Accessible Spaces: 2 spaces
- Accessible Provided: 2 spaces
Required Van Accessible Spaces: 1 space
Van Accessible Provided: 1 space
Required Bicycle Spacelap 20 Parking Spaces 2 spaces

PARKING REQUIREMENTS
ALBUQUERQUE TRANSIT DEPARTMENT PARK AND RIDE
Parking Provided: 96 spaces
Required Accessible Spaces: 8 spaces
Accessible Provided: 8 spaces

GENERAL NOTES:
1. AREA LIGHTING SHALL BE ARRANGED SO THAT THE LOCATION OF THE LIGHT FIXTURES TOGETHER WITH THE CUT OFF ANGLE SHALL NOT SHINE INTO THE PUBLIC RIGHT OF WAY.
2. REFER TO GRADING AND DRAINAGE PLAN FOR ALL REQUIRED UTILITY INFORMATION.
3. CROSS ACCESS AND PARKING AGREEMENTS WILL BE PROVIDED IF REQUIRED.
4. PUBLIC PARKING WILL BE PROVIDED TO THE PUBLIC AT THE ALBUQUERQUE TRANSIT DEPARTMENT'S PARK AND RIDE FOR ACCESS AND USE OF THE ADJACENT BIKEWAYS AND TRAILS.
5. ALL CORNERS AT PUBLIC STREETS WILL MAINTAIN A 35 FT CLEAR SITE TRIANGLE AS PER COA STANDARDS.



3 Light Pole Elevation
NTS
10RB-98.DWG

Dekker/Perich/Sabatini
architectura • interiors • planning • engineering
6801 Jefferson NE, Suite 100 Albuquerque, NM 87109
505 761-9700
505 761-4222

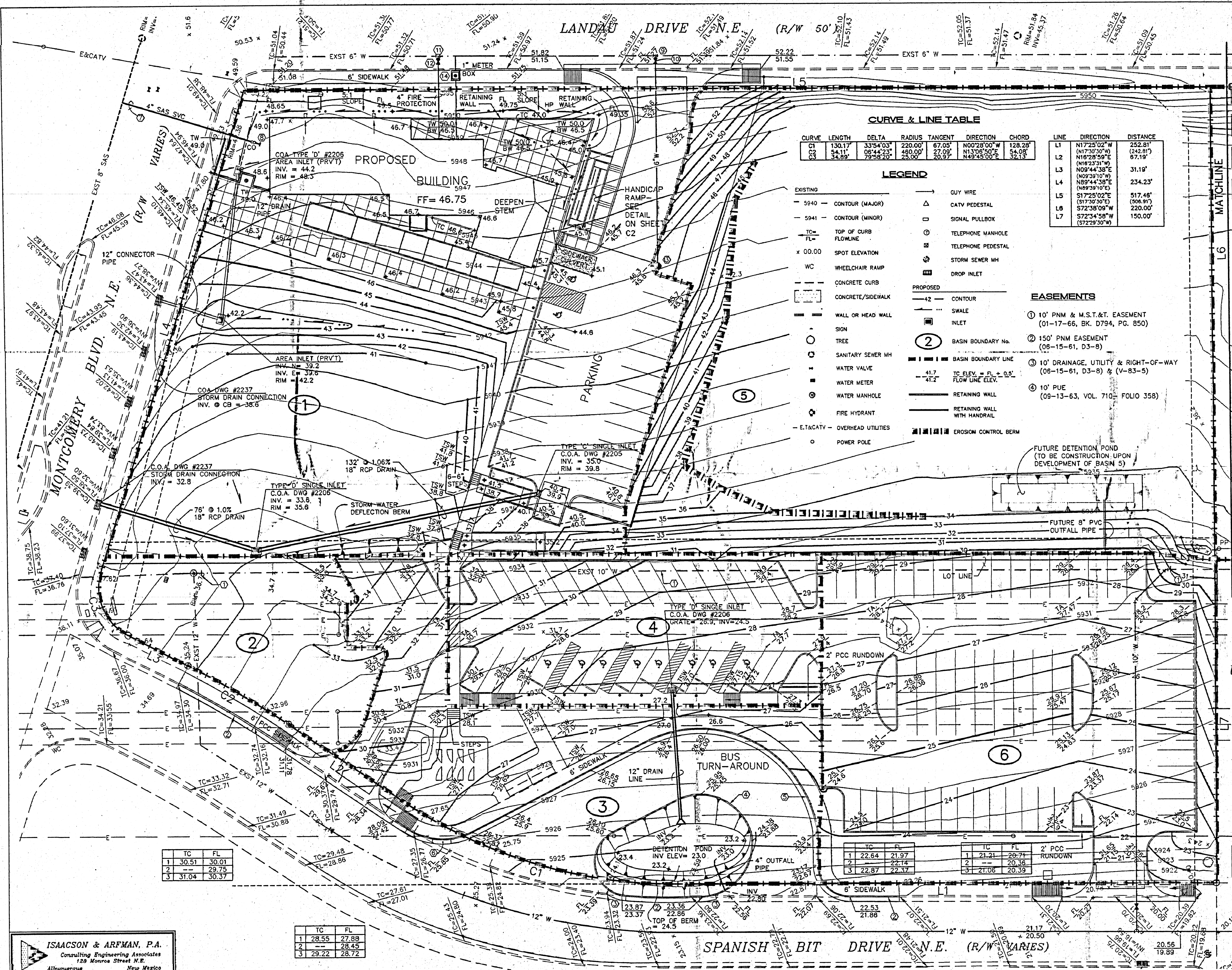
CITY OF ALBUQUERQUE
PUBLIC WORKS DEPARTMENT
ENGINEERING DEVELOPMENT GROUP

**TITLE: Montgomery & Tramway Police Substation
DRB Site Development Plan for Building Permi**

PROJECT NO. 623091 MAP NO. G-23-Z SHEET OF 1

PROJ 1000655

LANDAU DRIVE N.E. (R/W 50')



CURVE & LINE TABLE

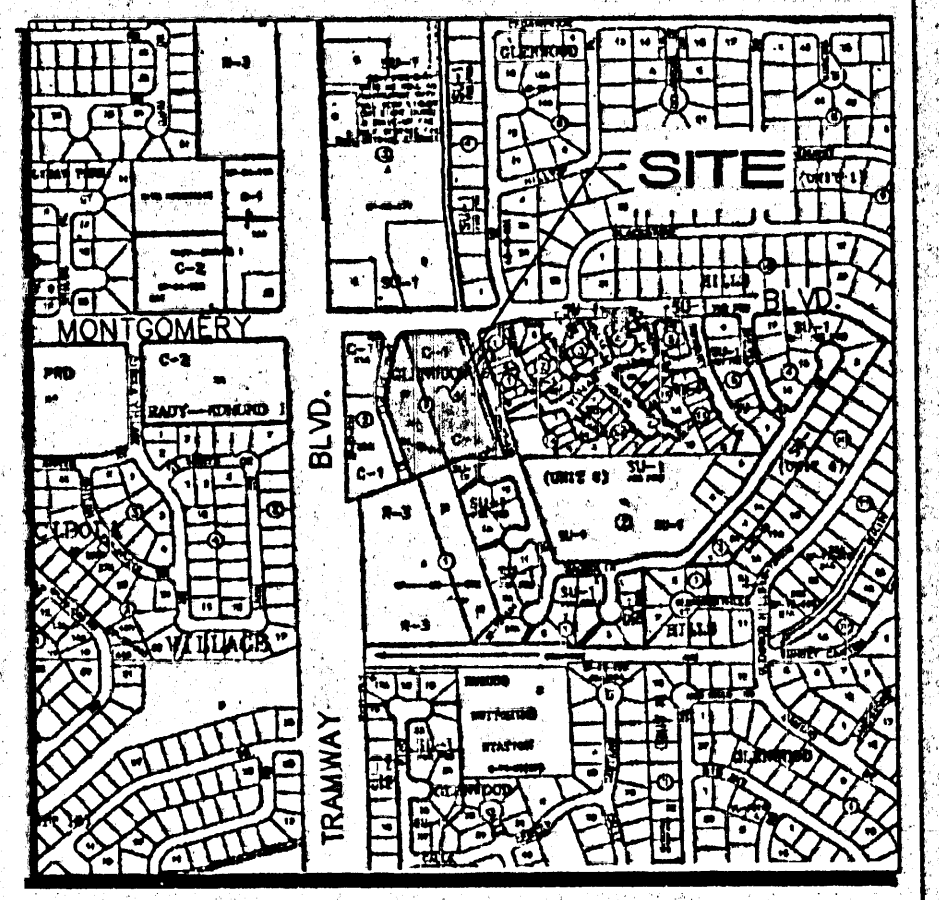
CURVE	LENGTH	DELTA	RADIUS	TANGENT	DIRECTION	CHORD
C1	130.17	335°4'03"	220.00	67.05	N00°28'00"W	128.29
C2	54.11	08°44'23"	480.00	27.09	N130°6'50"E	54.08
C3	34.89	79°58'20"	25.00	20.97	N49°45'00"E	32.15

LEGEND

- EXISTING**
- 5940 - CONTOUR (MAJOR)
 - 5941 - CONTOUR (MINOR)
 - TC - TOP OF CURB
 - FL - FLOWLINE
 - x 00.00 - SPOT ELEVATION
 - WC - WHEELCHAIR RAMP
 - CONCRETE CURB
 - CONCRETE/SIDEWALK
 - WALL OR HEAD WALL
 - SION
 - TREE
 - SANITARY SEWER MH
 - WATER VALVE
 - WATER METER
 - WATER MANHOLE
 - FIRE HYDRANT
 - E-CATV - OVERHEAD UTILITIES
 - POWER POLE
- PROPOSED**
- 42 - CONTOUR
 - SWALE
 - INLET
 - 2 - BASIN BOUNDARY No.
 - 1 - BASIN BOUNDARY LINE
 - 41.7 - TC ELEV. = FL + 0.5'
 - 41.2 - FLOW LINE ELEV.
 - RETAINING WALL
 - RETAINING WALL WITH HANDRAIL
 - EROSION CONTROL BERM
- OTHER SYMBOLS:**
- GUY WIRE
 - CATV PEDESTAL
 - SIGNAL PULLBOX
 - TELEPHONE MANHOLE
 - TELEPHONE PEDESTAL
 - STORM SEWER MH
 - DROP INLET

EASEMENTS

LINE	DIRECTION	DISTANCE	
L1	N17°25'02"W	252.21'	
L2	(N17°30'30"W)	(242.81')	
L3	N18°28'59"E	87.19'	
L4	(N16°23'31"W)	31.19'	
L5	N09°44'38"E	234.23'	
L6	(N09°39'10"E)	(N89°44'38"E)	517.46'
L7	S17°25'02"E	(506.91')	
L8	S72°38'09"W	220.00'	
L9	S72°54'58"W	(S72°29'30"W)	150.00'



SCALE: 1"=20'

KEYED CONSTRUCTION NOTES

- REMOVE AND DISPOSE 10" DIA WATERLINE BETWEEN SHOWN LIMITS, APPROX. 451 FT.
- REMOVE PCC DRIVEWAY OR PCC CURB & GUTTER. REPLACE W/ COA STD CURB & GUTTER.
- TRANSITION FROM MEDIAN CURB & GUTTER TO COA STD CURB & GUTTER OVER 10 FEET.
- COA MEDIAN CURB & GUTTER.
- COA STANDARD CURB & GUTTER.
- DEPRESSED CURB 10 FEET.
- 4" PVC SEWER SERVICE LINE PER COA STD DWG #2125.
- SANITARY SEWER CLEANOUT.
- 6"x6" TEE CONNECTION PER COA STD DWG #2301.
- 6" WATER VALVE.
- 6"x4" TEE CONNECTION PER COA STD DWG #2301.
- 4" WATER VALVE.
- PRIVATE FIRE HYDRANT PER COA STD DWG #2340. FLANGE ELEV= 46.50
- 1" WATER SERVICE WITH METER PER COA STD DWG #2362.

CITY OF ALBUQUERQUE
PUBLIC WORKS DEPARTMENT
ENGINEERING GROUP

TITLE: **Montgomery / Landau Substation GRADING / DRAINAGE & UTILITY PLAN**

Design Review Committee City Engineer Approval

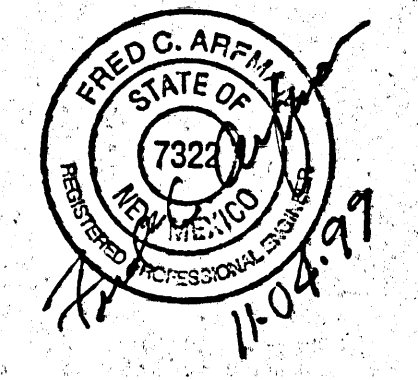
City Project No. **C-101** Zone Map No. **G-23-Z** Sheet **1** of **1**

ISAACSON & ARFMAN, P.A.
Consulting Engineering Associates
128 Monroe Street, N.E.
Albuquerque, New Mexico
0546RD4.DWG.dwg 11/04/99

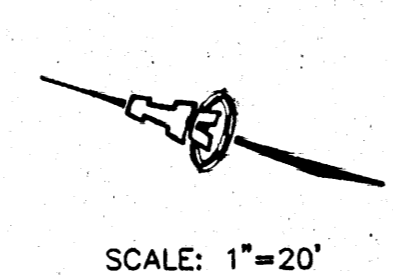
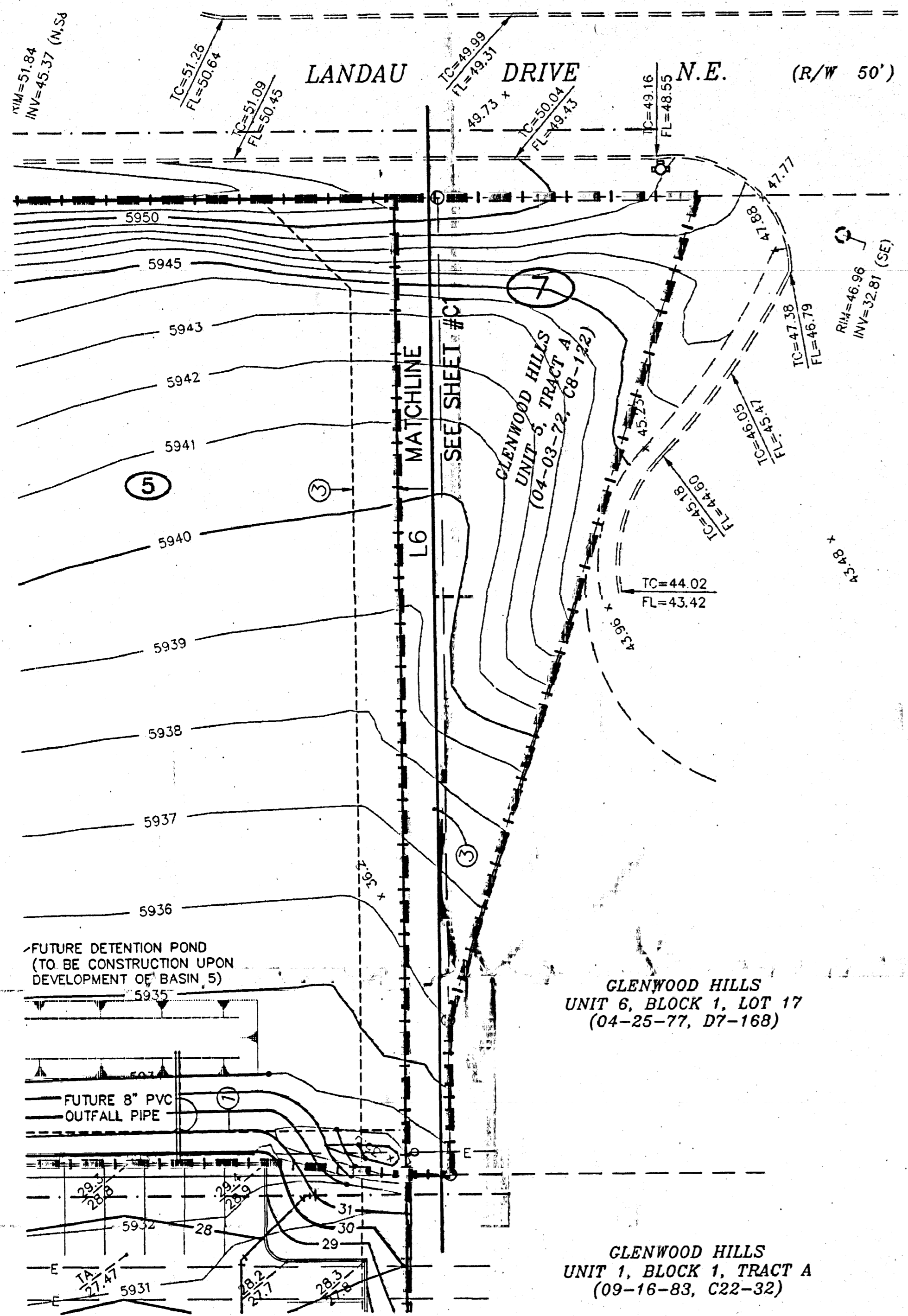
TC	FL
1 28.55	27.88
2 29.22	28.45
3 29.22	28.72

TC	FL
1 22.64	21.97
2 22.87	22.14
3 22.87	22.37

TC	FL
1 20.58	19.91
2 20.58	20.09
3 20.58	20.38



Dekker Perich Sabatini



LEGEND

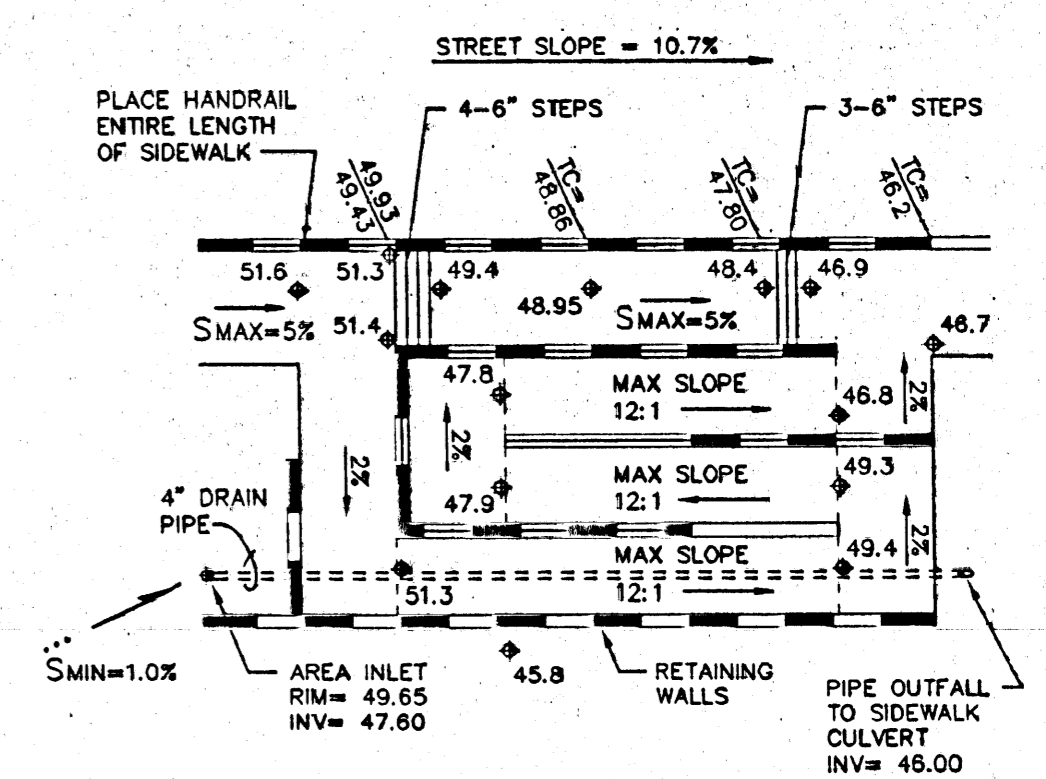
— 5940 —	CONTOUR (MAJOR)	—○—	GUY WIRE
— 5941 —	CONTOUR (MINOR)	△	CATV PEDESTAL
— TC —	TOP OF CURB FLOWLINE	□	SIGNAL PULLBOX
× 00.00	SPOT ELEVATION	⊙	TELEPHONE MANHOLE
WC	WHEELCHAIR RAMP	⊞	TELEPHONE PEDESTAL
—	CONCRETE CURB	⊞	STORM SEWER MH
▨	CONCRETE/SIDEWALK	⊞	DROP INLET
—	WALL OR HEAD WALL	— 42 —	CONTOUR
—	SIGN	—	SWALE
○	TREE	— 41.7 —	INLET
○	SANITARY SEWER MH	②	BASIN BOUNDARY No.
+	WATER VALVE	—	BASIN BOUNDARY LINE
+	WATER METER	— 41.7 —	RETAINING WALL
⊙	WATER MANHOLE	— 41.2 —	RETAINING WALL WITH HANDRAIL
⊙	FIRE HYDRANT	▨	EROSION CONTROL BERM
— E.T.&CATV —	OVERHEAD UTILITIES		
○	POWER POLE		

EASEMENTS

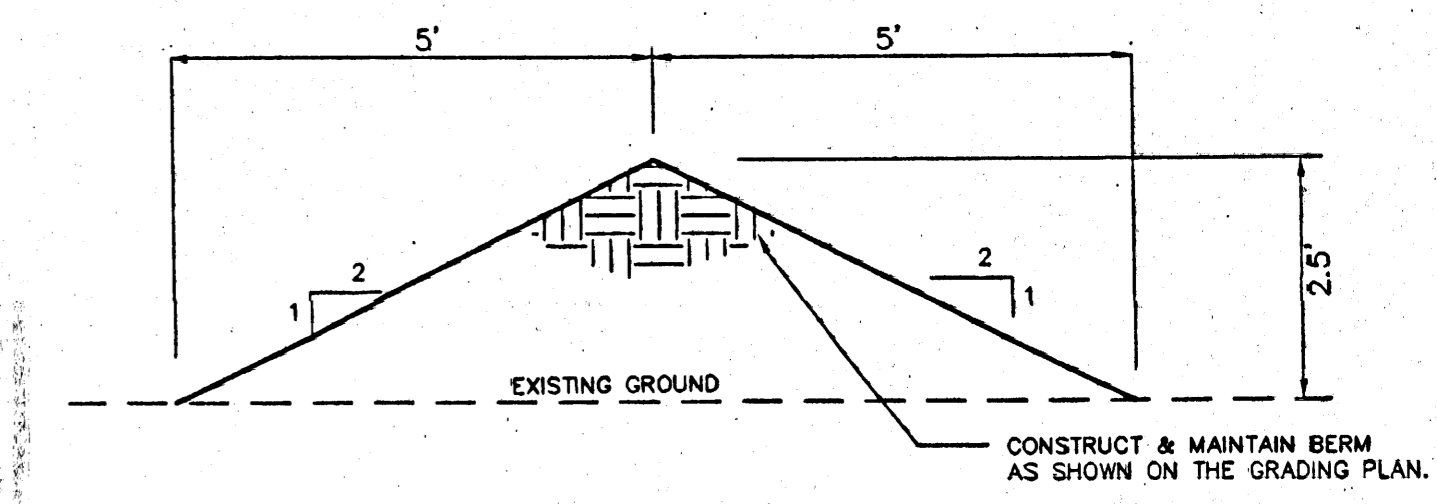
- 10' PNM & M.S.T.&T. EASEMENT (01-17-66, BK. D794, PG. 850)
- 150' PNM EASEMENT (06-15-61, D3-8)
- 10' DRAINAGE, UTILITY & RIGHT-OF-WAY (06-15-61, D3-8) & (V-83-5)
- 10' PUE (09-13-63, VOL. 710- FOLIO 358)

GRADING NOTES:

- ALL TRASH, DEBRIS, & SURFACE VEGETATION SHALL BE CLEARED AND LEGALLY DISPOSED OFFSITE.
- ALL SUBGRADE AND FILL SHALL BE COMPACTED TO A MINIMUM OF 90% ASTM D-1557.
- EXCAVATION IS UNCLASSIFIED AND INCLUDES EXCAVATION TO SUBGRADE ELEVATIONS INDICATED, REGARDLESS OF CHARACTER OF MATERIALS ENCOUNTERED.
- CONFORM TO ELEVATIONS AND DIMENSIONS SHOWN ON PLANS WITHIN A TOLERANCE OF 0.3± FEET.
- SCARIFY AND COMPACT SUBGRADE FOR FILLS. PLACE FILL MATERIALS IN LAYERS NOT MORE THAN 8" IN LOOSE DEPTH. MOISTEN AS NECESSARY TO PROVIDE OPTIMUM MOISTURE (±2%) CONTENT.
- UNIFORMLY GRADE AREAS WITHIN LIMITS OF GRADING AS SHOWN ON PLAN. SMOOTH FINISHED SURFACE WITHIN SPECIFIED TOLERANCE, COMPACT WITH UNIFORM SLOPES BETWEEN POINTS WHERE ELEVATIONS ARE INDICATED.
- MAXIMUM SLOPES SHALL BE 3:1 MINIMUM SLOPES SHALL BE 1%.
- TWO (2) WORKING DAYS PRIOR TO ANY EXCAVATION, CONTRACTOR MUST CONTACT NEW MEXICO ONE CALL SYSTEM, 260-1990, FOR LOCATION OF EXISTING UTILITIES.
- IF ANY UTILITY LINES, PIPELINES, OR UNDERGROUND UTILITY LINES ARE SHOWN ON THESE DRAWINGS, THEY ARE SHOWN IN AN APPROXIMATE MANNER ONLY, AND SUCH LINES MAY EXIST WHERE NONE ARE SHOWN. IF ANY SUCH EXISTING LINES ARE SHOWN, THE LOCATION IS BASED UPON INFORMATION PROVIDED BY THE OWNER OF SAID UTILITY, AND THE INFORMATION MAY BE INCOMPLETE, OR MAY BE OBSOLETE BY THE TIME CONSTRUCTION COMMENCES. THE ENGINEER HAS CONDUCTED ONLY PRELIMINARY INVESTIGATION OF THE LOCATION, DEPTH, SIZE OR TYPE OF EXISTING UTILITY LINES, PIPELINES, OR UNDERGROUND UTILITY LINES. THIS INVESTIGATION IS NOT CONCLUSIVE, AND MAY NOT BE COMPLETE, THEREFORE, MAKES NO REPRESENTATION PERTAINING THERETO, AND ASSUMES NO RESPONSIBILITY OR LIABILITY THEREFORE. THE CONTRACTOR SHALL INFORM ITSELF OF THE LOCATION OF ANY UTILITY LINE, PIPELINE, OR UNDERGROUND UTILITY LINE IN OR NEAR THE AREA OF THE WORK IN ADVANCE OF AND DURING EXCAVATION WORK. THE CONTRACTOR IS FULLY RESPONSIBLE FOR ANY AND ALL DAMAGE CAUSED BY ITS FAILURE TO LOCATE, IDENTIFY AND PRESERVE ANY AND ALL EXISTING UTILITIES, PIPELINES, AND UNDERGROUND UTILITY LINES. IN PLANNING AND CONDUCTING EXCAVATION, THE CONTRACTOR SHALL COMPLY WITH STATE STATUTES, MUNICIPAL AND LOCAL ORDINANCES, RULES AND REGULATIONS, IF ANY, PERTAINING TO THE LOCATION OF THESE LINES AND FACILITIES.
- THE CONTRACTOR SHALL PROMPTLY CLEAN UP ANY MATERIAL EXCAVATED WITHIN THE PUBLIC RIGHT-OF-WAY SO THAT THE EXCAVATED MATERIAL IS NOT ERODED AND WASHED DOWN THE STREET.
- OWNER WILL PROVIDE SOIL TESTING AND INSPECTION SERVICES DURING EARTHWORK OPERATIONS. ALLOW TESTING SERVICE TO INSPECT AND APPROVE COMPACTED SUBGRADES AND FILL LAYERS BEFORE FURTHER CONSTRUCTION WORK IS DONE. SHALL COMPACTION TESTS INDICATE INADEQUATE DENSITY, CONTRACTOR SHALL PROVIDE ADDITIONAL COMPACTION AND TESTING AT NO ADDITIONAL EXPENSE.
- OWNER HAS ESTABLISHED SUBDIVISION BOUNDARY CORNERS. CONTRACTOR SHALL PROVIDE ALL OTHER CONSTRUCTION STAKING INCLUDING TRACT CORNERS. CONTRACTOR SHALL LOCATE AND PRESERVE ALL BOUNDARY CORNERS AND REPLACE ANY LOST OR DISTURBED CORNERS.



HANDICAP RAMP DETAIL
SCALE: 1"=10'



EROSION CONTROL BERM
SCALE: 1"=2'

EROSION CONTROL

- THE CONTRACTOR SHALL ENSURE THAT NO SOIL ERODES FROM THE SITE INTO THE PUBLIC RIGHT-OF-WAY OR ONTO PRIVATE PROPERTY. THIS CAN BE ACHIEVED BY CONSTRUCTING EROSION CONTROL BERMS (AS DETAILED AT RIGHT) AS SHOWN ON THE PLAN AND WETTING THE SOIL TO KEEP IT FROM BLOWING.
- THE CONTRACTOR SHALL SECURE "TOPSOIL DISTURBANCE PERMIT" FROM THE CITY ENVIRONMENTAL HEALTH DEPARTMENT PRIOR TO BEGINNING CONSTRUCTION. AN EXCAVATION PERMIT IS REQUIRED FOR ALL WORK WITHIN PUBLIC RIGHT-OF-WAY.
- SEE GRADING NOTES.

LEGAL DESCRIPTION: LOTS 3A AND 4, BLOCK 2, UNIT 1, GLENWOOD HILLS TOGETHER WITH A PORTION OF VACATED PUBLIC ALLEY.

AREA: 3.9181 AC; 170,672.44 SF

BENCHMARK: ACS MONUMENT "10-F22A" LOCATED AT THE INTERSECTION OF MONTGOMERY BLVD. N.E. AND SHENANDOAH PL. N.E. AND IS SET FLUSH WITH THE CURB. ELEV=5831.93

FLOOD ZONE DESIGNATION: NO PORTION OF THIS SITE LIES WITHIN A FLOOD PLAIN AS DESIGNATED ON PANEL 163 OF 825 OF THE FEMA FLOOD INSURANCE RATE MAPS DATED SEPTEMBER 20, 1996.

EXISTING CONDITIONS: THE SITE IS PRESENTLY UNDISTURBED WITH NATIVE VEGETATIVE COVER TYPICAL OF THE CITY'S EAST SIDE. IT IS BORDERED BY MONTGOMERY BLVD. TO THE NORTH, LANDAU DRIVE TO THE EAST AND SPANISH BIT DRIVE TO THE WEST. BOTH MONTGOMERY BLVD. AND SPANISH BIT DRIVE HAVE EXISTING STORM DRAIN SYSTEMS WITH INLETS ADJACENT TO THE PROPERTY.

THE ENTIRE SITE SLOPES TO THE WEST (TOWARD SPANISH BIT) AT APPROXIMATELY 6%. AN INLET LOCATED AT THE SOUTH END OF SPANISH BIT ACCEPTS THE UNDEVELOPED FLOWS FROM THIS SITE. THE FLOWS ARE THEN CONVEYED TO TRAMWAY BLVD. OFFSITE FLOWS FROM GLENWOOD HILLS, UNIT 5, TRACT A (0.1745 AC, 0.4 CFS) ARE ALLOWED TO CROSS THE SITE. THE OFFSITE FLOWS ARE ALSO COLLECTED BY THE INLET IN SPANISH BIT DRIVE.

EXISTING HYDROLOGY: PRECIPITATION ZONE: 4
LAND TREATMENT: 100% A
Qp = 4.08 (2.20) = 8.98 CFS

PROPOSED CONDITIONS: THE SITE IS PLANNED TO BE DEVELOPED AS AN APD SUBSTATION AND PARK AND RIDE SITE. THE SUBSTATION WILL BE LOCATED IN THE NORTHEASTERN CORNER OF THE SITE ADJACENT TO LANDAU DRIVE. THE PARK AND RIDE WILL BE LOCATED ALONG SPANISH BIT DRIVE. OFFSITE FLOWS WILL BE ALLOWED TO CONTINUE ACROSS THE SITE IN THEIR HISTORICAL FLOW PATTERNS.

THE SITE WILL BE DIVIDED INTO SEVEN DRAINAGE BASINS IN ITS DEVELOPED CONDITION.

*BASIN 1 WILL BE COLLECTED AT THE NORTHWEST CORNER BY AN INLET AND BE PIPED TO AN EXISTING INLET ALONG MONTGOMERY BLVD. THIS BASIN WILL BE ALLOWED FREE DISCHARGE TO THE MONTGOMERY STORM DRAIN SYSTEM. (4.38 CFS)

*BASIN 2 WILL BE LEFT IN ITS NATURAL STATE. A SIGN MAY BE INSTALLED WITHIN THIS AREA BUT DISTURBANCE WILL BE KEPT AT A MINIMUM. THIS BASIN IS ALLOWED FREE DISCHARGE TO SPANISH BIT DRIVE.

*BASIN 3 WILL BE ALLOWED FREE DISCHARGE TO SPANISH BIT. (1.75 CFS)

*BASIN 4 WILL BE COLLECTED BY AN INLET AND PIPED TO THE BUS TURNAROUND ISLAND. THIS ISLAND WILL BE DEPRESSED TO LIMIT THE OUTFALL TO SPANISH BIT DRIVE TO 0.53 CFS.

*BASIN 5 IS PLANNED TO REMAIN MOSTLY UNDISTURBED AT THIS TIME. 0.37 CFS OF HISTORICAL OFFSITE FLOWS FROM BASIN 7 WILL BE ALLOWED FREE DISCHARGE ACROSS THE BASIN. COMBINED FLOWS FROM BASINS 5 AND 7 WILL BE ALLOWED FREE DISCHARGE ACROSS BASIN 6 TO SPANISH BIT DRIVE. (3.16 CFS) ONCE DEVELOPED, A DETENTION POND WILL BE REQUIRED IN THE SOUTHWEST CORNER TO LIMIT RUNOFF TO 3.16 CFS.

*BASIN 6 WILL BE ALLOWED FREE DISCHARGE TO SPANISH BIT DRIVE. (3.21 CFS)

*BASIN 7 IS AN OFFSITE BASIN WHICH WILL BE ALLOWED FREE DISCHARGE ACROSS BASIN 5 AT HISTORICAL FLOW RATES. (0.5 CFS)

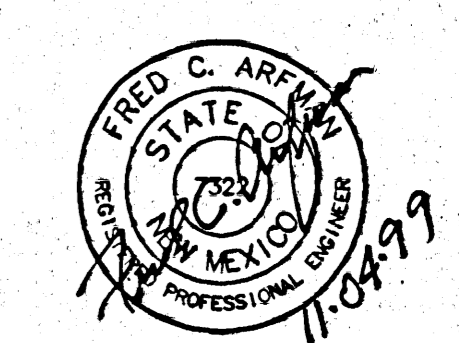
THE TOTAL DISCHARGE TO SPANISH BIT DRIVE FROM THE SITE WILL BE 8.98 CFS WHICH IS EQUAL TO THE HISTORICAL FLOW RATE.

PROPOSED HYDROLOGY:

- *BASIN 1
A = 1.13 AC.
LAND TREATMENT = 55% D, 45% A
Qp = 1.13 (0.55(5.25)+0.45(2.20)) = 4.38 CFS
- *BASIN 2
A = 0.17 AC.
LAND TREATMENT = 100% A
Qp = 0.17(2.20) = 0.374 CFS
- BASIN 3
A = 0.42 AC.
LAND TREATMENT = 44% D, 30% B, 26% C
Qp = 0.42(0.30(2.92)+0.26(3.73)+0.44(5.25)) = 1.75 CFS
- *BASIN 4
A = 0.28 AC.
LAND TREATMENT = 95% D, 5% B
Qp = 0.28(0.05(2.29)+0.95(5.25)) = 1.43 CFS
- *BASIN 5
A = 1.27 AC.
EXISTING LAND TREATMENT = 100% A
EXISTING Qp = 1.27(2.20) = 2.79 CFS
FUTURE LAND TREATMENT = 60% D, 20% B, 20% C
FUTURE Qp = 1.27(0.20(2.92)+0.20(3.73)+0.60(5.25)) = 5.7 CFS
- *BASIN 6
A = 0.64 AC.
LAND TREATMENT = 90% D, 10% B
Qp = 0.64(0.90(5.25)+0.10(2.92)) = 3.21 CFS
- *BASIN 7
A = 0.17 AC.
LAND TREATMENT = 100% A
Qp = 0.17(2.20) = 0.37 CFS
V = 0.17(1.08(43560)/12) = 666 CF

CITY OF ALBUQUERQUE PUBLIC WORKS DEPARTMENT ENGINEERING GROUP			
TITLE: Montgomery / Landau Substation GRADING / DRAINAGE & UTILITY PLAN			
Design Review Committee	City Engineer Approval	Scale	Sheet No.
City Project No.	Zone Map No.	Sheet	Of
C-102	G-23-Z	3	3

ISAACSON & ARFMAN, P.A.
Consulting Engineering Associates
128 Monroe Street N.E.
Albuquerque, New Mexico
054605.DWG/dv 11/04/99



Dekker Perich Sabatini

6" DEPTH OF 2"-4" SANTA ANA TAN COBBLE ON SLOPES 3:1 AND STEEPER; 3" DEPTH OF 3/8" SANTA FE BROWN GRAVEL ON SLOPES FLATTER THAN 3:1 (NO RECLAMATION SEED).

3" DEPTH OF 3/8" SANTA FE BROWN GRAVEL (NO RECLAMATION SEED).

LANDAU STREET

RECLAMATION SEED OUTSIDE OF STEEL EDGE IN DISTURBED AREAS

STEEL EDGE

6" DEPTH OF 2"-4" SANTA ANA TAN COBBLE ON SLOPES 3:1 AND STEEPER; 3" DEPTH OF 3/8" SANTA FE BROWN GRAVEL ON SLOPES FLATTER THAN 3:1 (NO RECLAMATION SEED).

RECLAMATION SEED IN DISTURBED AREAS

SEE LANDSCAPE NOTES AND LEGEND SHEET FOR ADDITIONAL INFORMATION

UNDEVELOPED-EXISTING NATIVE VEGETATION TO REMAIN - DO NOT DISTURB

UNDEVELOPED-EXISTING NATIVE VEGETATION TO REMAIN - DO NOT DISTURB

MONTGOMERY BOULEVARD

POLICE SUBSTATION SITE
PARK AND RIDE SITE

NEW TRANSIT DEPARTMENT PARK 'N' RIDE FACILITY

RECLAMATION SEED IN DISTURBED AREAS

RECLAMATION SEED IN DISTURBED AREAS

RECLAMATION SEED IN DISTURBED AREAS

3" DEPTH OF 3/8" SANTA FE BROWN GRAVEL WITHIN STEEL EDGE (NO RECLAMATION SEED).

6" DEPTH OF 2"-4" SANTA ANA TAN COBBLE ON POND BOTTOM AND SIDE SLOPES WITH RECLAMATION SEED ON BOTTOM ONLY.

SPANISH BIT STREET

AS BUILT INFORMATION	
CONTRACTOR	DATE
WORKED BY	DATE
INSPECTOR'S ACCEPTANCE BY	DATE
VEGETATION BY	DATE
DRAWINGS CORRECTED BY	DATE
MICRO-FILM INFORMATION	DATE
RECORDED BY	NO.

BENCH MARKS	
ACS MONUMENT "3"-22"	ELEVATION = 564.85

SURVEY INFORMATION	
FIELD NOTES	DATE
NO.	BY

ENGINEER'S SEAL

NO.	DATE	REMARKS	BY
	DATE 11-3-99	DESIGN	dja
	DATE 11-3-99		dja
	DATE 11-3-99		

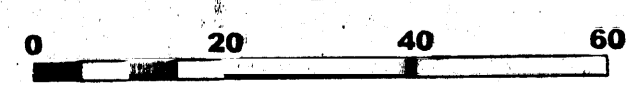
PLANNING
LANDSCAPE ARCHITECTURE
MARKET ANALYSIS

5150 A SAN FRANCISCO NE
ALBUQUERQUE, NM 87108
PHONE: 505-822-8200
FAX: 505-822-8282
E-MAIL: mjc@sites-sw.com
WEB: www.sites-sw.com

CITY OF ALBUQUERQUE
PUBLIC WORKS DEPARTMENT
ENGINEERING DEVELOPMENT GROUP

TITLE: **Montgomery & Tramway Police Substation LANDSCAPE PLAN**

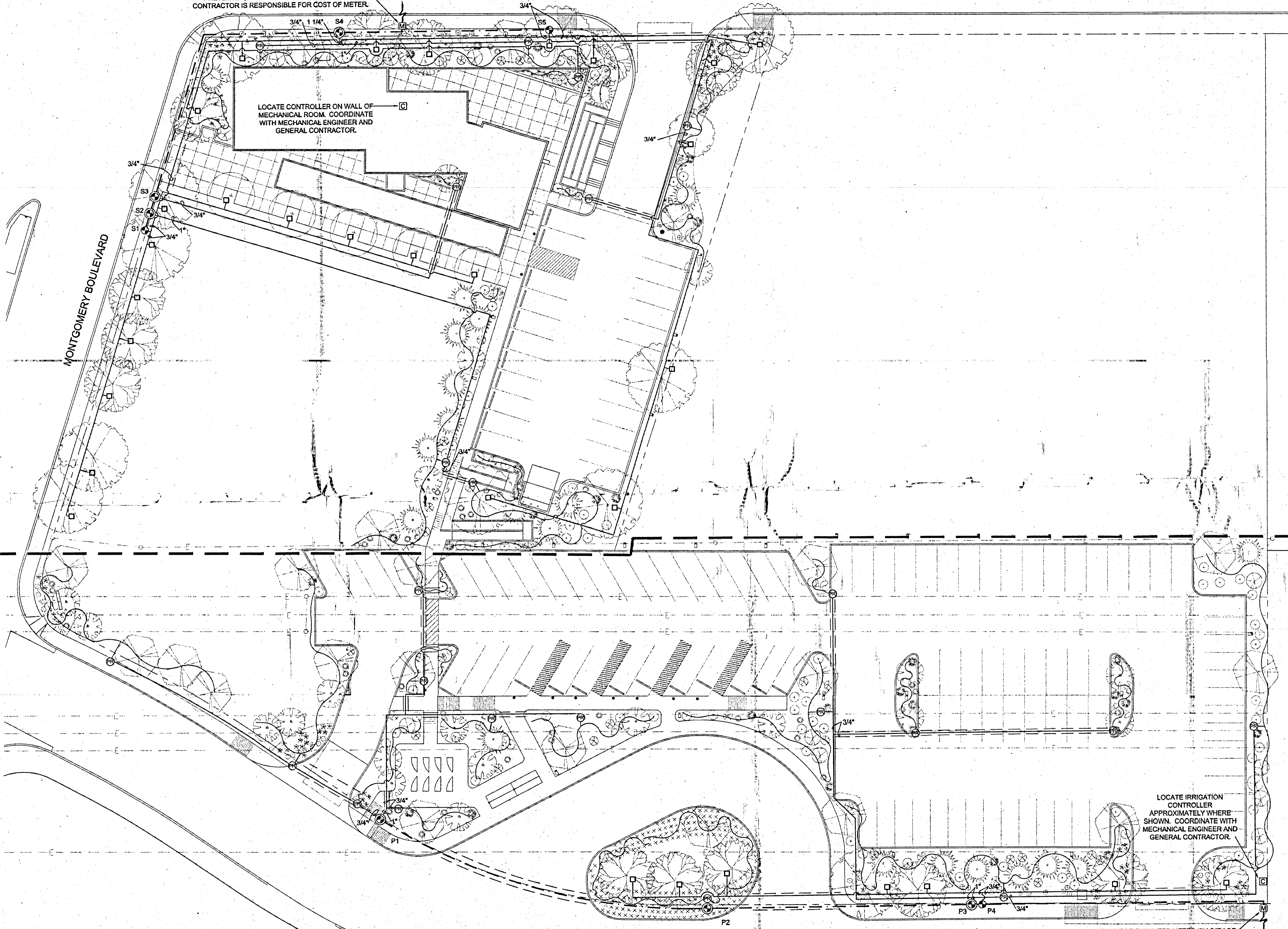
DESIGN REVIEW COMMITTEE	CITY ENGINEER APPROVAL	MO./DAY/YR.	MO./DAY/YR.



3/4" IRRIGATION WATER METER (BY CITY OF ALBUQUERQUE), REDUCED PRESSURE BACKFLOW PREVENTER, AND MASTER VALVE. IRRIGATION CONTRACTOR IS RESPONSIBLE FOR COST OF METER.

LANDAU STREET

LOCATE CONTROLLER ON WALL OF MECHANICAL ROOM. COORDINATE WITH MECHANICAL ENGINEER AND GENERAL CONTRACTOR.



LOCATE IRRIGATION CONTROLLER APPROXIMATELY WHERE SHOWN. COORDINATE WITH MECHANICAL ENGINEER AND GENERAL CONTRACTOR.

3/4" IRRIGATION WATER METER (BY CITY OF ALBUQUERQUE), REDUCED PRESSURE BACKFLOW PREVENTER, AND MASTER VALVE. IRRIGATION CONTRACTOR IS RESPONSIBLE FOR COST OF METER.

POLICE SUBSTATION SITE
PARK & RIDE SITE



5150 A SAN FRANCISCO NE
ALBUQUERQUE, NM 87109
PHONE: 505-822-8200
FAX: 505-822-8282
E-MAIL: mail@sites-sw.com
WEB: www.sites-sw.com

AS BUILT INFORMATION	
CONTRACTOR	DATE
WORKED BY	DATE
INSPECTOR'S ACCEPTANCE BY	DATE
VERIFICATION BY	DATE
DRAWING BY	DATE
MICRO-FILM INFORMATION	DATE
RECORDED BY	DATE
NO.	

SURVEY INFORMATION	
FIELD NOTES	DATE
NO.	BY

ENGINEER'S SEAL	

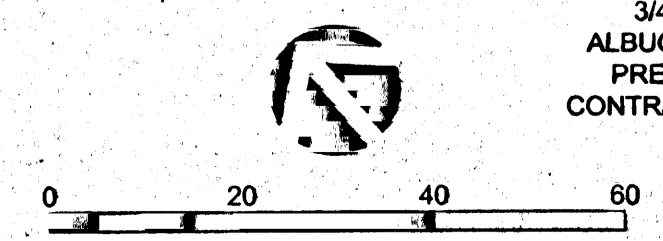
REMARKS	
NO.	DATE
DESIGNED BY: g/j	DATE: 11-3-99
DRAWN BY: g/j	DATE: 11-3-99
CHECKED BY: -	DATE: 11-3-99

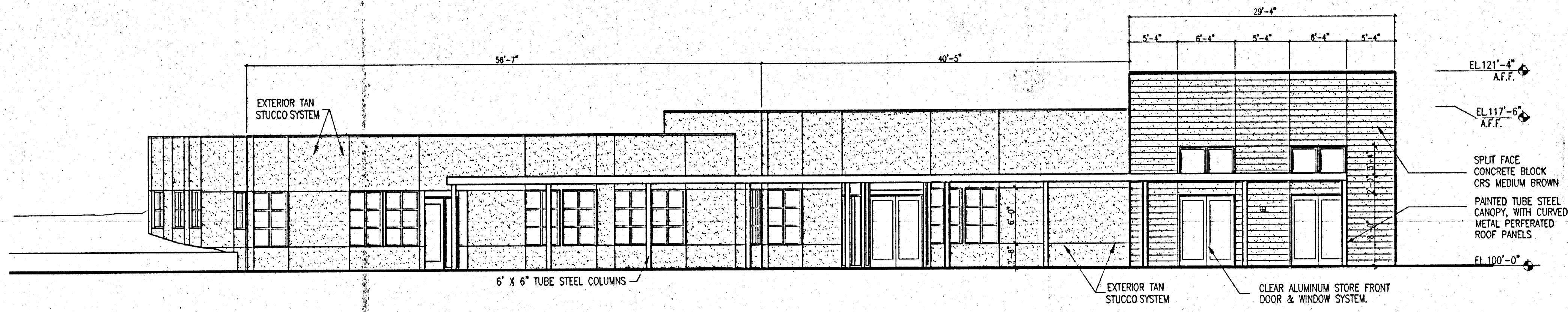
CITY OF ALBUQUERQUE
PUBLIC WORKS DEPARTMENT
ENGINEERING DEVELOPMENT GROUP

TITLE: **Montgomery & Tramway Police Substation IRRIGATION PLAN**

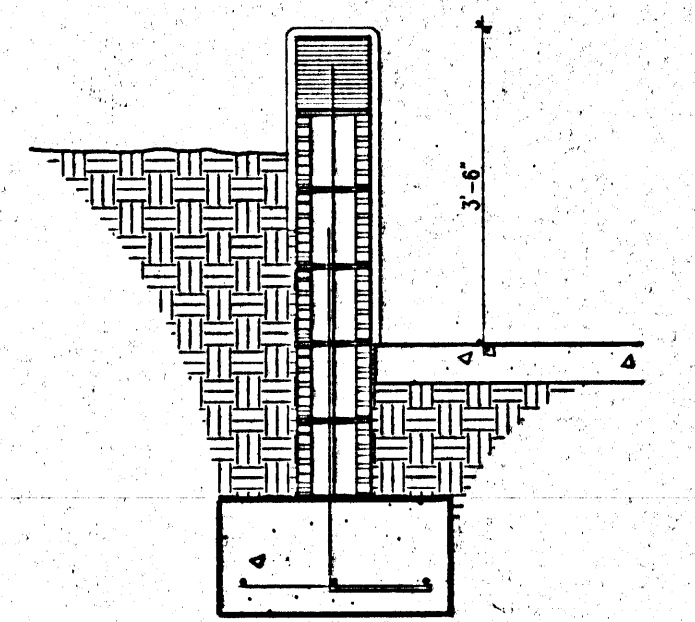
DESIGN REVIEW COMMITTEE	CITY ENGINEER APPROVAL	NO./DAY/YR.	NO./DAY/YR.

PROJECT NO. **623091** MAP NO. **G-23-Z** SHEET OF **L-102**

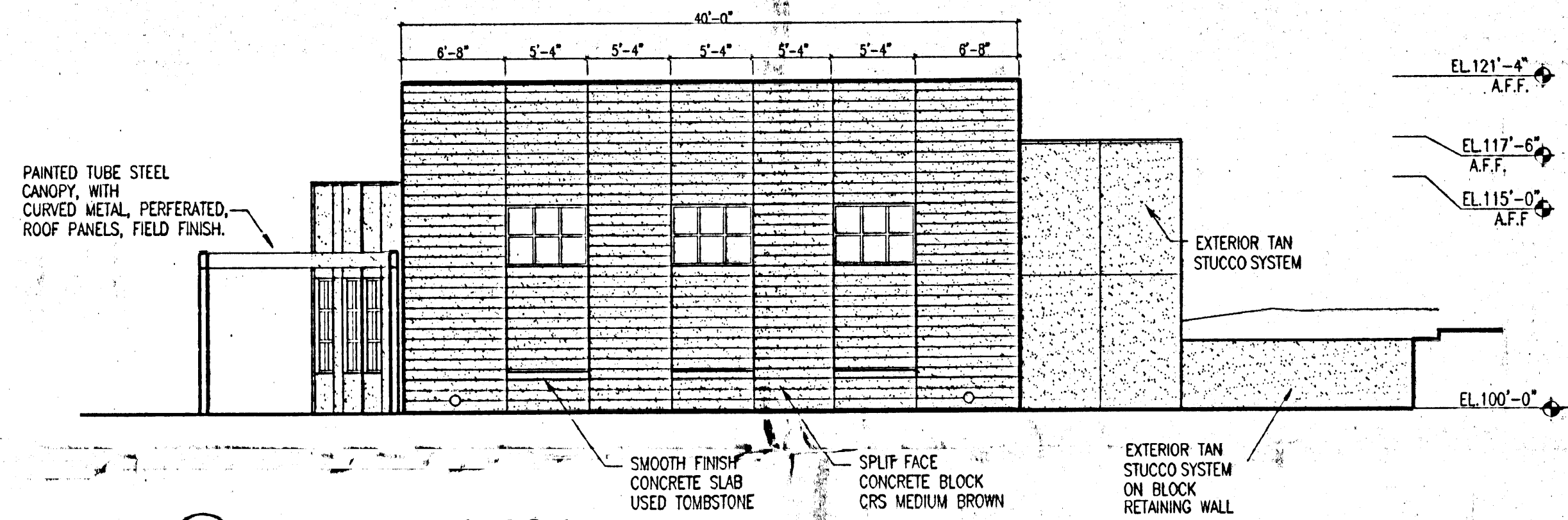




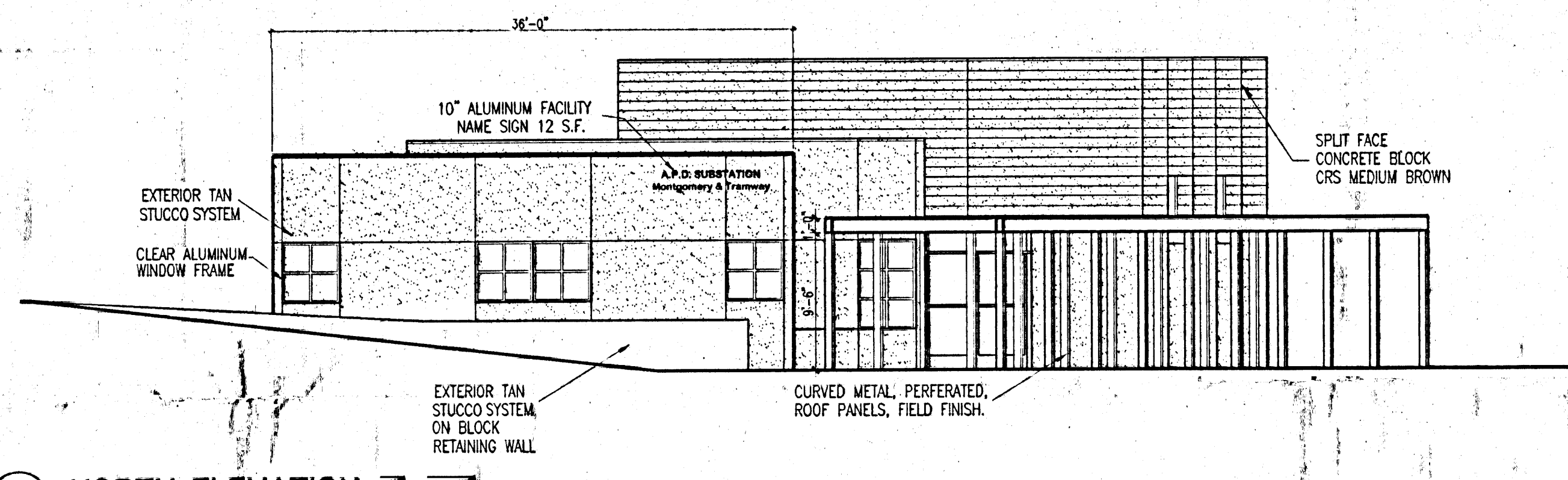
① WEST ELEVATION
1/8"=1'-0"



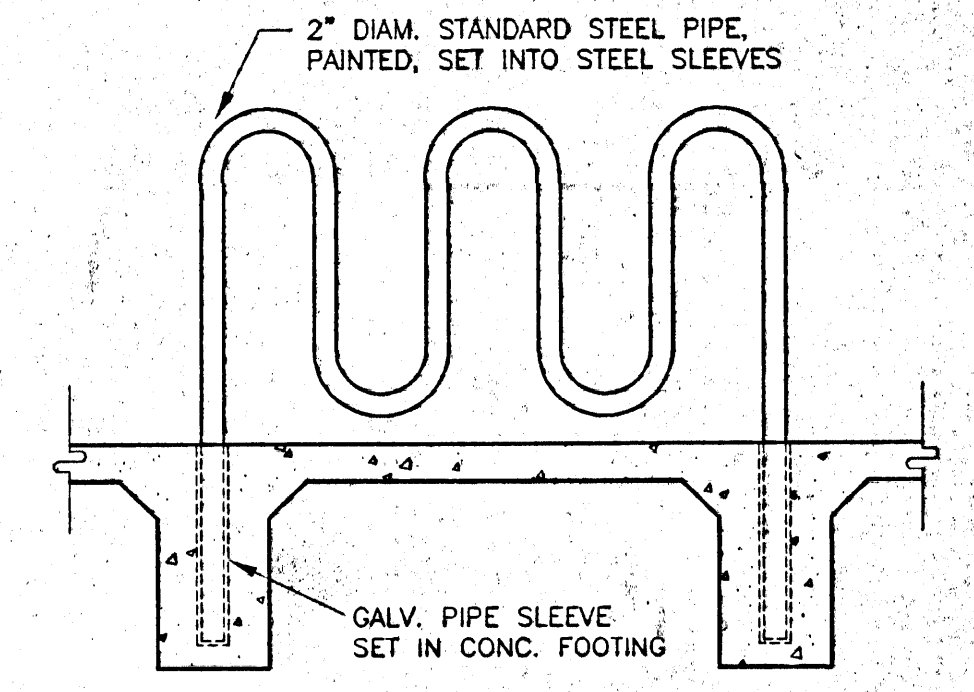
① Retaining Wall Section
1/2"=1'-0"



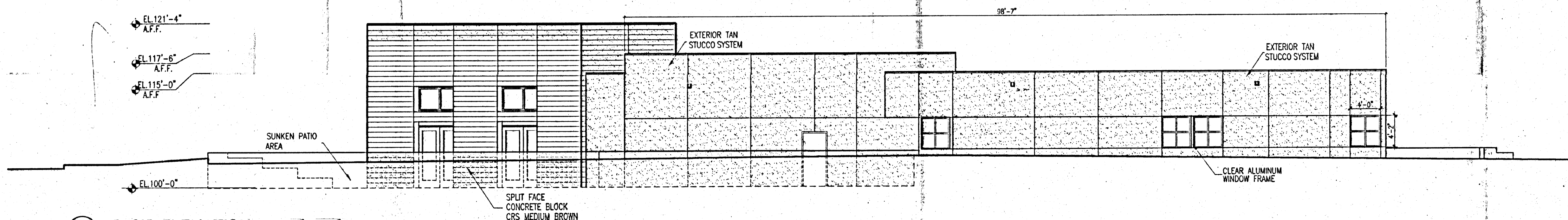
② SOUTH ELEVATION
1/8"=1'-0"



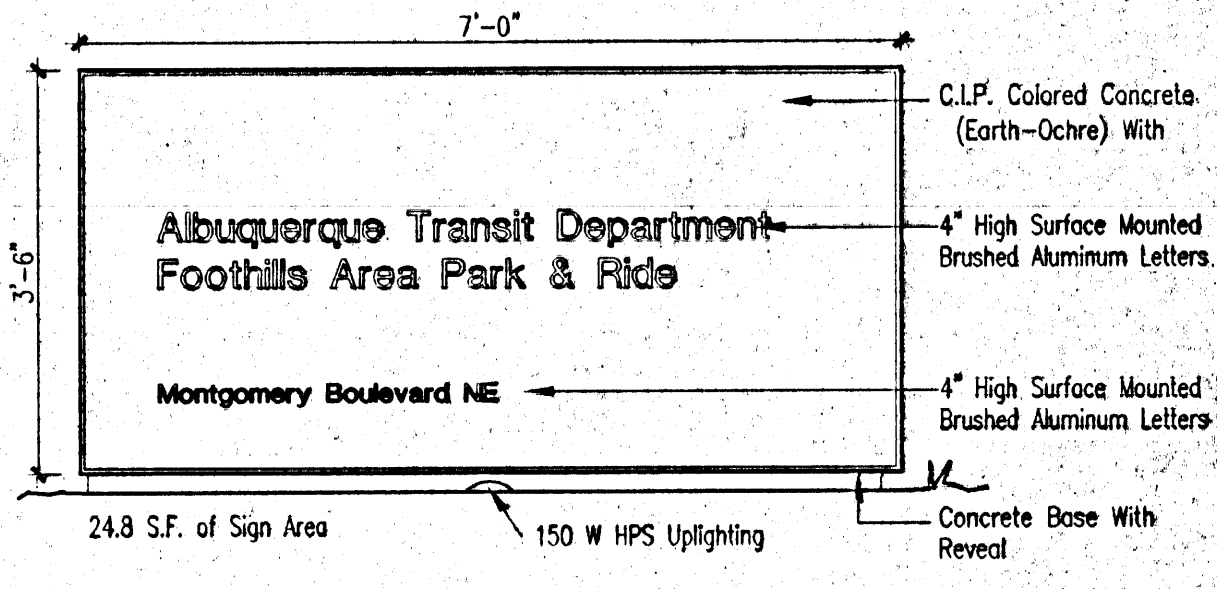
③ NORTH ELEVATION
1/8"=1'-0"



② Bike Rack Detail
1/2"=1'-0"

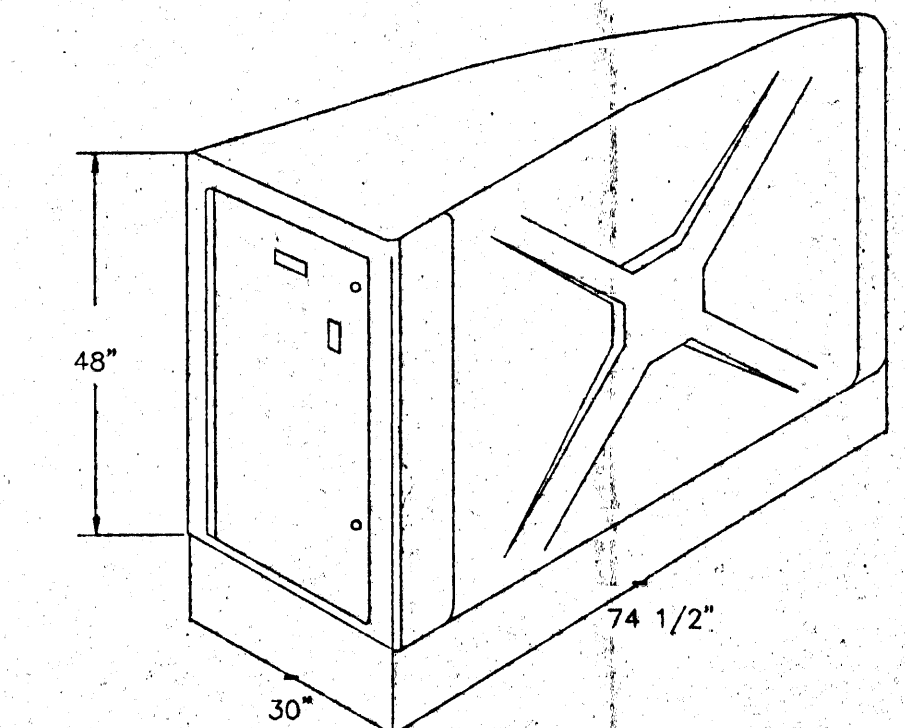


④ EAST ELEVATION
1/8"=1'-0"



③ Monument Sign Elevation
1/2"=1'-0"

351 | DOOR - 1 BIKE CAPACITY
Door width - 26" - 66.04 cm



④ Bike Storage Locker
No Scale

Dekker/Perich/Sabatini
architecture • interiors • planning • engineering
6801 Jefferson NE, Suite 100
Albuquerque, NM 87109 505 761-9700 fax 761-4222

CITY OF ALBUQUERQUE
PUBLIC WORKS DEPARTMENT
ENGINEERING DEVELOPMENT GROUP
TITLE: **Montgomery & Tramway Police Substation
DRB Building Elevations**
PROJECT NO. 623091 MAP NO. G-23-Z SHEET OF