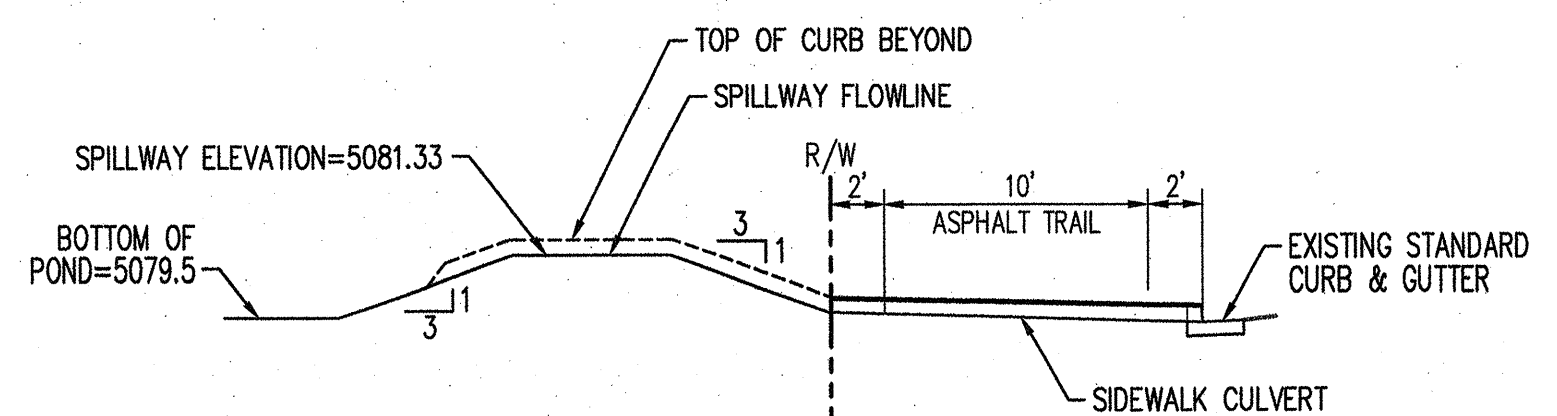
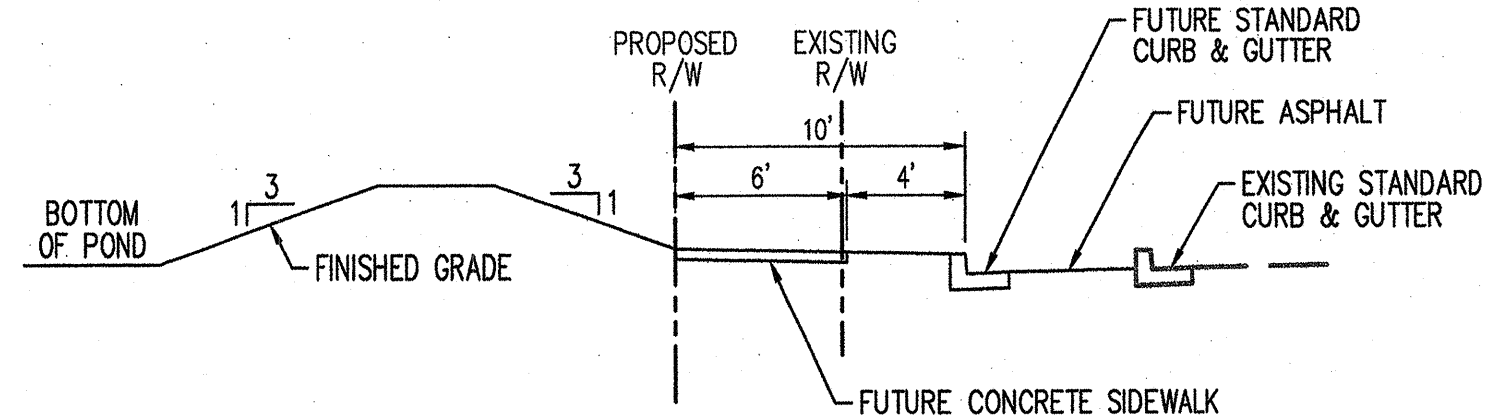


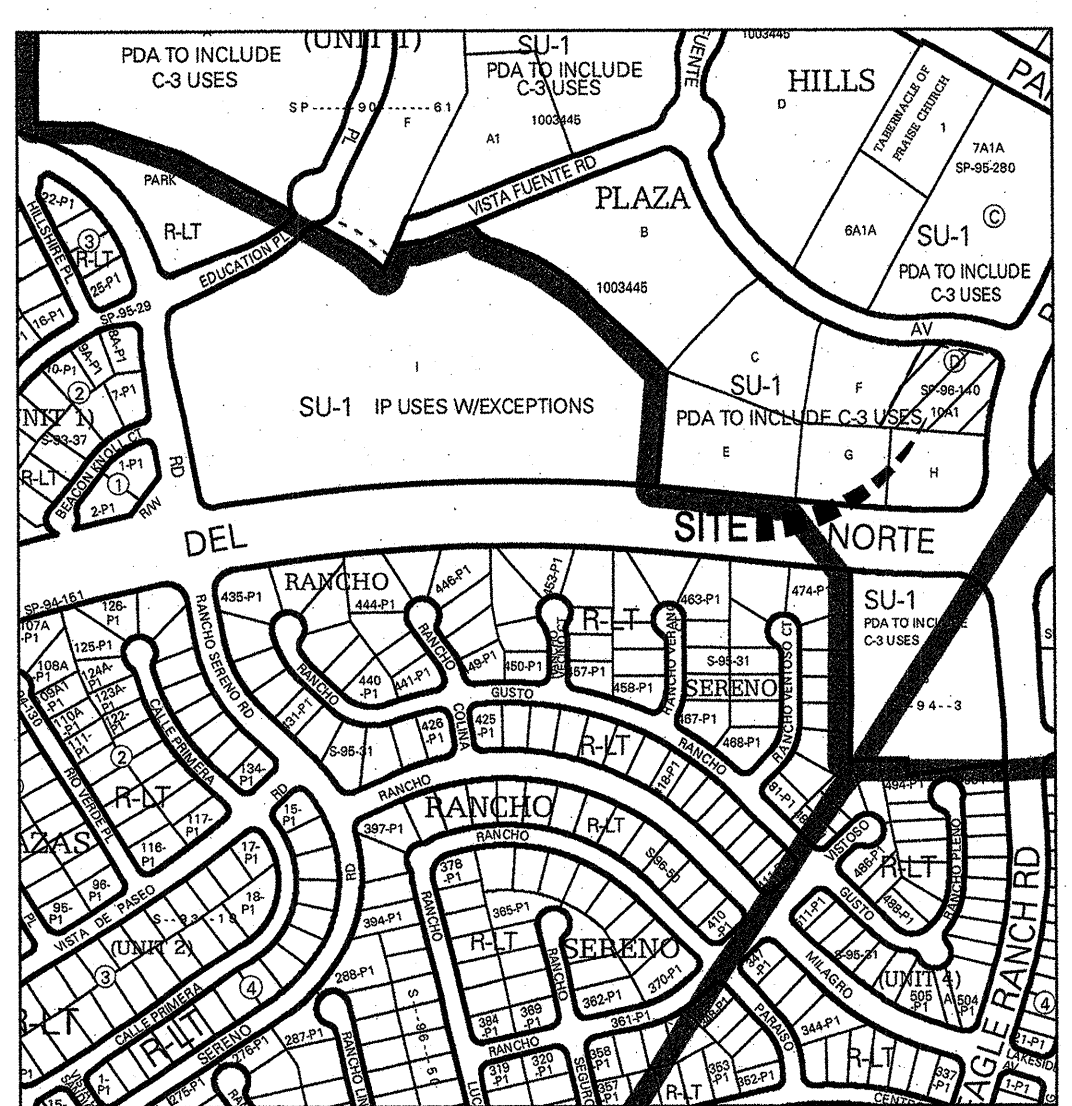
EAGLE RANCH ROAD - SECTION A  
NTS



NUNZIO AVE - SECTION B  
NTS



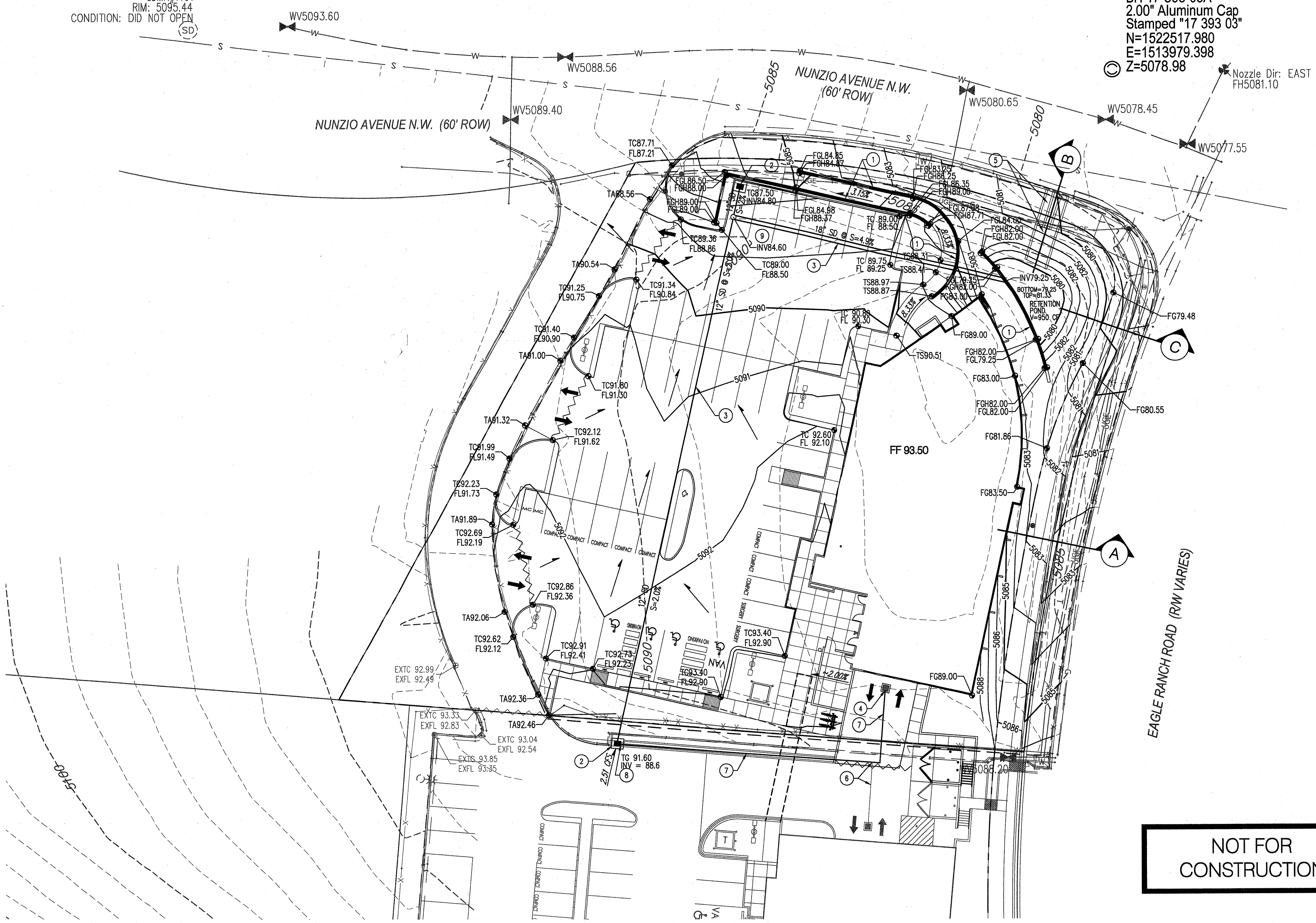
EAGLE RANCH ROAD - SECTION C  
NTS



ZONE ATLAS PAGE: C-12

SDMH#1161  
RIM: 5095.44  
CONDITION: DID NOT OPEN  
(SD)

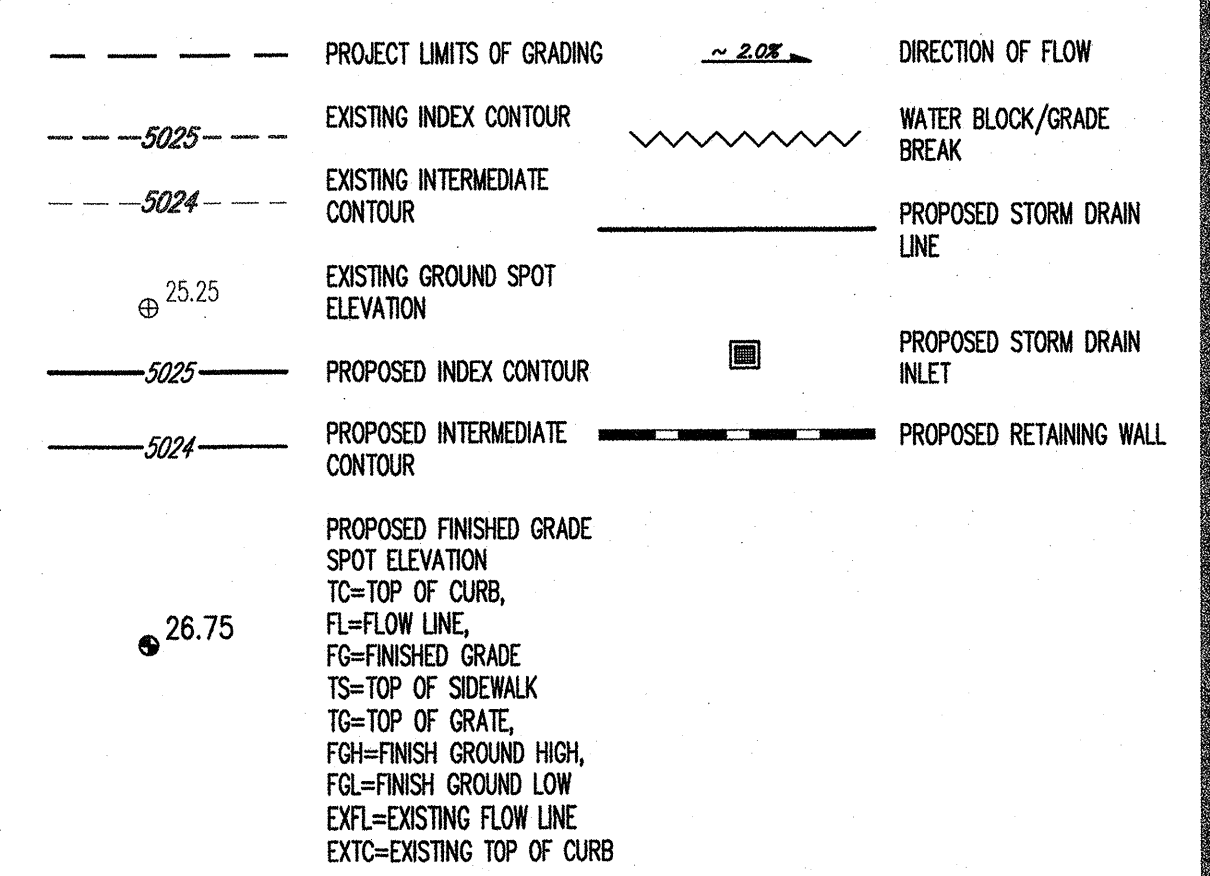
PROJECT BENCHMARK  
BH 17-393-03A  
2.00" Aluminum Cap  
Stamped "17 393 03"  
N=1522517.980  
E=1513979.398  
Z=5078.98  
Nozzle Dir: EAST  
FH5081.10



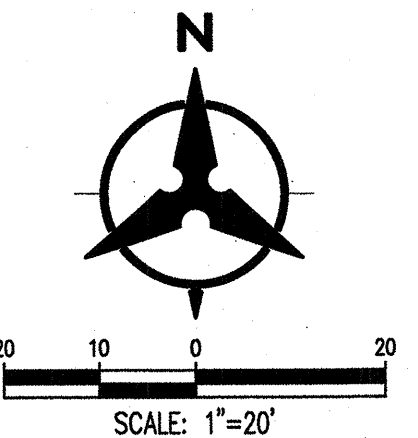
GRADING KEYNOTES

1. PROPOSED RETAINING WALL.
2. PROPOSED STORM DRAIN INLET.
3. PROPOSED STORM DRAIN LINE, SEE PLAN FOR SIZE & SLOPE.
4. PROPOSED STORM DRAIN SUMP PUMP.
5. CONCRETE SPILLWAY WITH 3'-24" WIDE SIDEWALK CULVERTS.
6. EXISTING SUMP PUMP DISCHARGE LINE, CONNECT TO PHASE 2 SUMP PUMP DISCHARGE LINE.
7. PHASE 2 SUMP PUMP DISCHARGE LINE.
8. CONNECT SUMP PUMP DISCHARGE LINE TO PROPOSED INLET.
9. DRAIN BASIN WITH SOLID COVER.

GRADING LEGEND



NOT FOR CONSTRUCTION

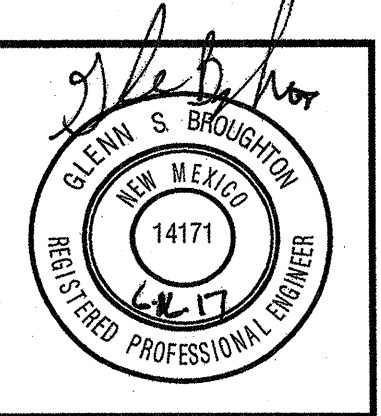


Bohannon & Huston  
www.bhinc.com 800.877.5332

revision  
by  
date  
rev



Mullen Heller  
Architecture P.C.  
924 Park Avenue SW  
Suite B  
Albuquerque 87102  
505 268 4144 [p]  
505 268 4244 [f]



job number 17-04  
drawn by AC  
project manager GSB  
date 06-07-2017

project title  
Smiles for Kids Dental Office PHASE 2  
9211 Eagle Ranch Road, NW  
Albuquerque, New Mexico 87114  
sheet title  
Conceptual Grading & Drainage Plan

sheet  
C100