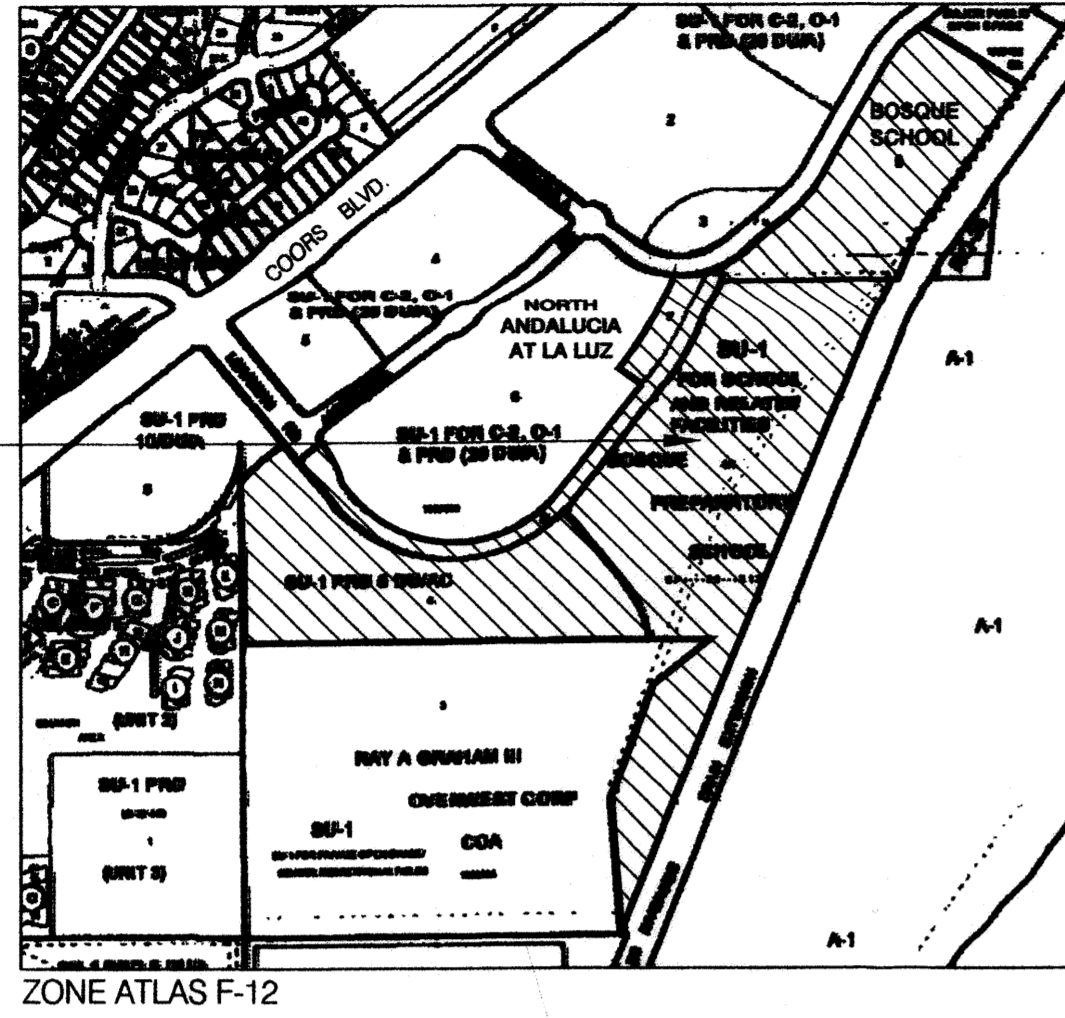
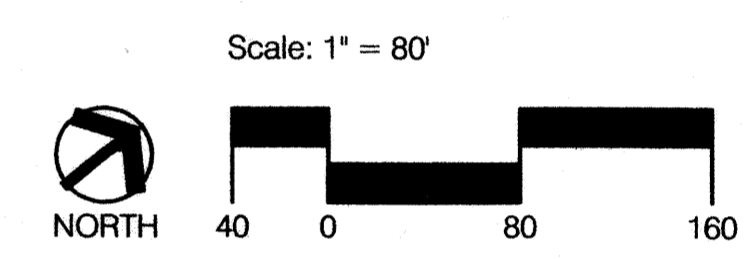
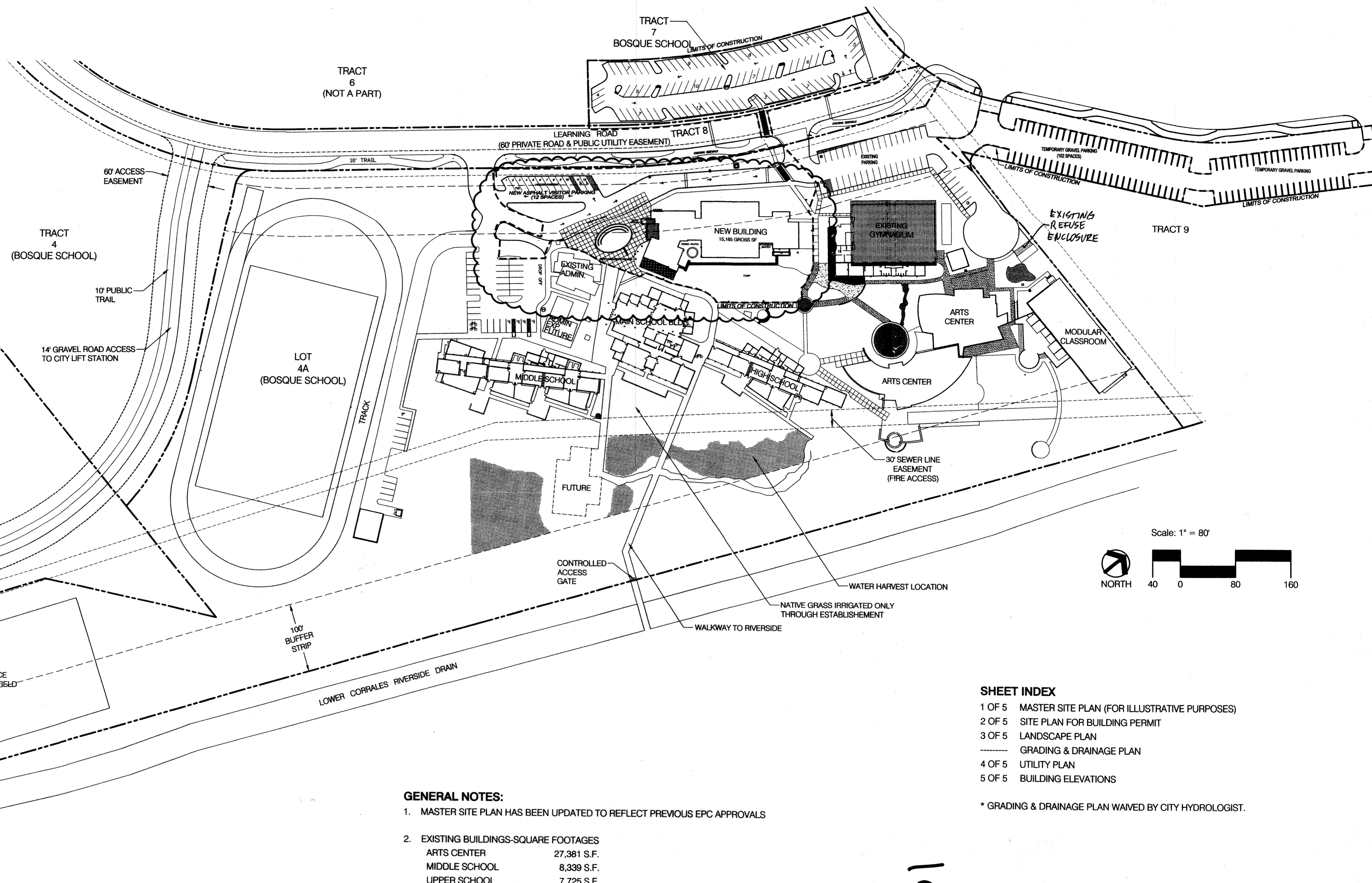


VICINITY MAP



PROJECT SITE

ZONE ATLAS F-12



SHEET INDEX

- 1 OF 5 MASTER SITE PLAN (FOR ILLUSTRATIVE PURPOSES)
- 2 OF 5 SITE PLAN FOR BUILDING PERMIT
- 3 OF 5 LANDSCAPE PLAN
- 4 OF 5 GRADING & DRAINAGE PLAN
- 5 OF 5 UTILITY PLAN
- 5 OF 5 BUILDING ELEVATIONS

* GRADING & DRAINAGE PLAN WAIVED BY CITY HYDROLOGIST.

GENERAL NOTES:

1. MASTER SITE PLAN HAS BEEN UPDATED TO REFLECT PREVIOUS EPC APPROVALS
2. EXISTING BUILDINGS-SQUARE FOOTAGES

ARTS CENTER	27,381 S.F.
MIDDLE SCHOOL	8,339 S.F.
UPPER SCHOOL	7,725 S.F.
ADMINISTRATION	2,759 S.F.
LIBRARY	10,448 S.F.
GYMNASIUM	15,300 S.F.
MODULAR CLASSROOM	10,080 S.F.
TOTAL EXISTING BUILDINGS	87,592 S.F.
3. SCHOOLHOUSE BUILDING: 16,500 S.F.
4. PARKING

VEHICLE	195 (PAVED PARKING, INCLUDING 9 H.C.)
TOTAL VEHICLE PARKING PROVIDED	102 (BASE COURSE TEMPORARY PARKING)
	52 (PARALLEL PARKING ON LEARNING ROAD, ONE SIDE ONLY)
	349
TOTAL BICYCLE	20 (EXISTING TO REMAIN)
TOTAL BICYCLE PARKING PROVIDED	

1000901

PROJECT NUMBER: 1000901
 Application Number: 08EPC-40052 *08DRB 70312*

Is an Infrastructure List required? () Yes (X) No If yes, then a set of approved DRC plans with a work order is required for any construction within Public Right-of-Way or for construction of public improvements.

DRB SITE DEVELOPMENT PLAN APPROVAL:

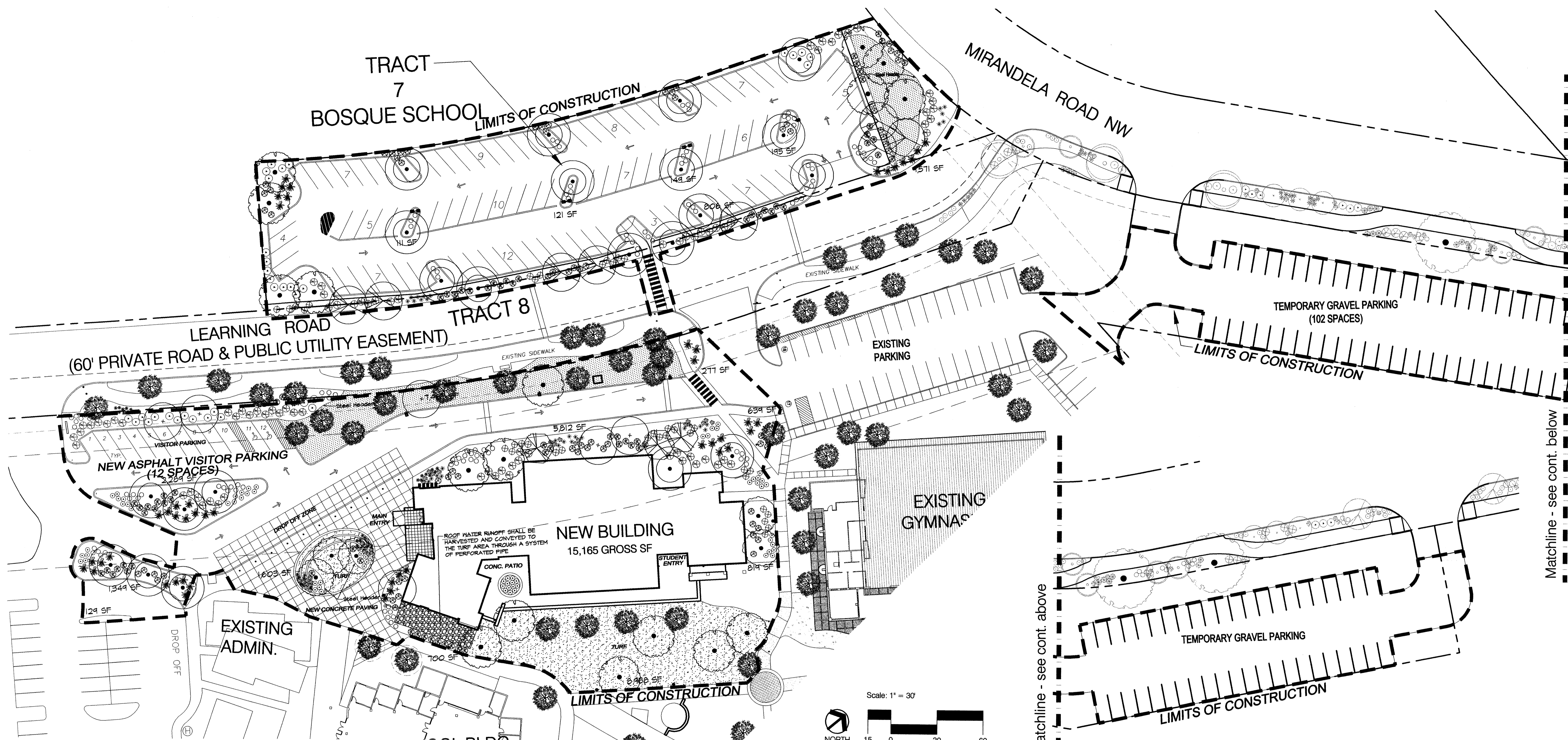
<i>[Signature]</i>	7/23/08
Public Engineering, Transportation Division	Date
<i>[Signature]</i>	7-16-08
ABCWUA	Date
<i>[Signature]</i>	7/16/08
Parks and Recreation Department	Date
<i>[Signature]</i>	7/16/08
City Engineer	Date
N/A	
* Environmental Health Department (conditional)	Date
<i>[Signature]</i>	7/7/08
Solid Waste Management	Date
<i>[Signature]</i>	7/24/08
DRB Chairperson, Planning Department	Date

Illustrative Master Plan
 Amendment Site for Building Permit
BOSQUE SCHOOL CLASSROOMS

Prepared By:
ROHDE MAY KELLER McNAMARA
ARCHITECTURE
 PROFESSIONAL CORPORATION
400 Gold Avenue, SW Suite 1100 Silver Tree Albuquerque, New Mexico 87102 USA Tel: 505 243 5464

CONSENSUS PLANNING, INC.
 Planning / Landscape Architecture
 302 Eighth Street NW
 Albuquerque, NM 87102
 (505) 764-9801 Fax 842-5495
 e-mail: cp@consensusplanning.com

HIGH MESA Consulting Group
FORMERLY HIGH MESA ASSOCIATES, INC.
 4010 S MIDWAY PARK BLVD. NE • ALBUQUERQUE, NEW MEXICO 87109
 PHONE: 505.346.4250 • FAX: 505.346.4254 • www.highmesacg.com

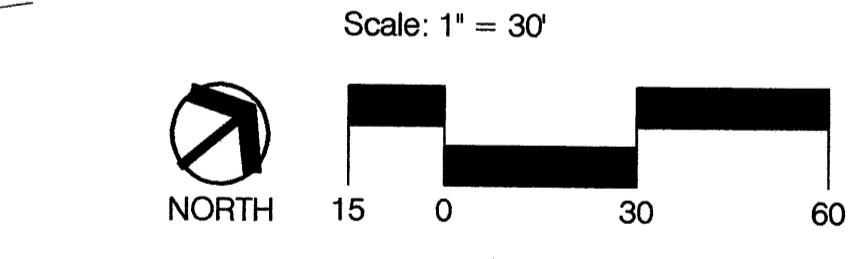


PLANT LEGEND

Qty.	Symbol	Scientific Name Common Name	Size	Installed Size Mature Size	Water Use
Trees					
3	Existing Trees	Existing Trees			
3	Chilopsis linearis 'Luc. Ham.'	Desert Willow	15-Gal.	8' ht. x 6' spr. 20' ht. x 25' spr.	Low +
6	Fraxinus oxycarpa 'Raywood'	Raywood Ash	2" B&B	14' ht. x 6' spr. 35' ht. x 30' spr.	Medium +
22	Platanus wrightii	Arizona Sycamore	2 1/2" B&B	16' ht. x 6' spr. 70' ht. x 60' spr.	Medium +
17	Populus angustifolia	Narrowleaf Cottonwood	2 1/2" B&B	16' ht. x 6' spr. 70' ht. x 60' spr.	Medium +
5	Pyrus calleryana 'Aristocrat'	Flowering Pear	2" B&B	14' ht. x 5' spr. 45' ht. x 30' spr.	Medium +
8	Robinia x ambigua	Purple Robe Locust	2" B&B	14' ht. x 5' spr. 40' ht. x 30' spr.	Medium
Shrubs/Groundcovers					
12	Artemisia 'Ponis Castle'	Ponis Castle Sage	1-Gal.	3' o.c. 3' ht. x 3' spr.	Low +
72	Caryopteris clandonensis	Blue Mist	5-Gal.	3' o.c. 3' ht. x 3' spr.	Medium
30	Baccharis 'Starr'	Thompson Baccharis	5-Gal.	4' o.c. 2' ht. x 4' spr.	Low +
74	Fallugia paradoxa	Apache Plume	1-Gal.	5' o.c. 4' ht. x 4' spr.	Low

PLANT LEGEND

Qty.	Symbol	Scientific Name Common Name	Size	Installed Size Mature Size	Water Use
Shrubs/Groundcovers					
22	Hesperaloe parviflora	Red Yucca	1-Gal.	3' o.c. 3' ht. x 3' spr.	Medium
64	Lavendula angustifolia	Lavender	1-Gal.	3' o.c. 3' ht. x 3' spr.	Medium
48	Juniperus sabinia 'Buffalo'	Buffalo Juniper (female)	5-Gal.	6' o.c. 2' ht. x 6' spr.	Low +
72	Cytisus scoparius 'Moonlight'	Scotch Broom	5-Gal.	5' o.c. 4' ht. x 4' spr.	Medium
96	Potentilla fruticosa	Goldfinger Potentilla	1-Gal.	3' o.c. 3' ht. x 3' spr.	Low
34	Rhus trilobata	Three-leaf Sumac	5-Gal.	4' o.c. 4' ht. x 4' spr.	Low+
36	Salvia greggii	Cherry Sage	1-Gal.	3' o.c. 3' ht. x 3' spr.	Medium
31	Nasella tenuissima	Threadgrass	1-Gal.	3' o.c. 2' ht. x 2' spr.	Low +
Turf					
		Turf Grass Mix (Sod)			
		Kentucky Bluegrass/Fescue/Rye Mix			
		Native Turf Mix (Reseed existing area)			
		Bouteloua gracilis/Blue Grama			
		Bouteloua curtipendula/Sideoats Grama			
35		Moss Rock Boulders (3' min. dia.)			



MULCHES
All shrub planting areas shall be top dressed with crusher fines, 3/4" Santa Fe Brown Rock Mulch, 2" - 4" Santa Ana Tan Cobble

IRRIGATION SYSTEM
Irrigation system standards outlined in the Water Conservation Landscaping and Water Waste Ordinance shall be strictly adhered to. A fully automated irrigation system will be used to irrigate turf areas and tree, shrub and groundcover planting areas. The irrigation system shall be designed to isolate plant material according to solar exposure. The trees will be provided with (6) 2 gph emitters with the ability to be expanded to accommodate the growth of the tree. Shrubs and groundcovers will be provided with (2) 1 gph emitters. Trees, shrubs and groundcovers will be grouped on the same valve.

MAINTENANCE RESPONSIBILITY
Maintenance of the landscaping and irrigation system, including those areas within the public R.O.W., shall be the responsibility of the Owner.

STATEMENT OF WATER WASTE
The Landscape Plan for this site shall limit the provision of high water use turf to a maximum of 20 percent of the provided landscape area.

Matchline - see cont. above

Matchline - see cont. below

Amendment
Landscape Plan
BOSQUE SCHOOL CLASSROOMS

Prepared By:
ROHDE MAY KELLER MCNAMARA ARCHITECTURE
PROFESSIONAL CORPORATION
400 Gold Avenue, SE Studio 1100 Stone Tower Albuquerque, New Mexico 87102 USA Tel. 505 243 5454

CONSENSUS PLANNING, INC.
Planning / Landscape Architecture
302 Eighth Street NW
Albuquerque, NM 87102
(505) 764-9801 Fax 842-5495
e-mail: cp@consensusplanning.com

HIGH MESA Consulting Group
FORMERLY BY NORTHSHORE AND ASSOCIATES, INC.
4210-B MIDWAY PARK BLVD. NE - ALBUQUERQUE, NEW MEXICO 87109
PHONE: 505.946.6250 FAX: 505.945.6254 www.highmesagroup.com

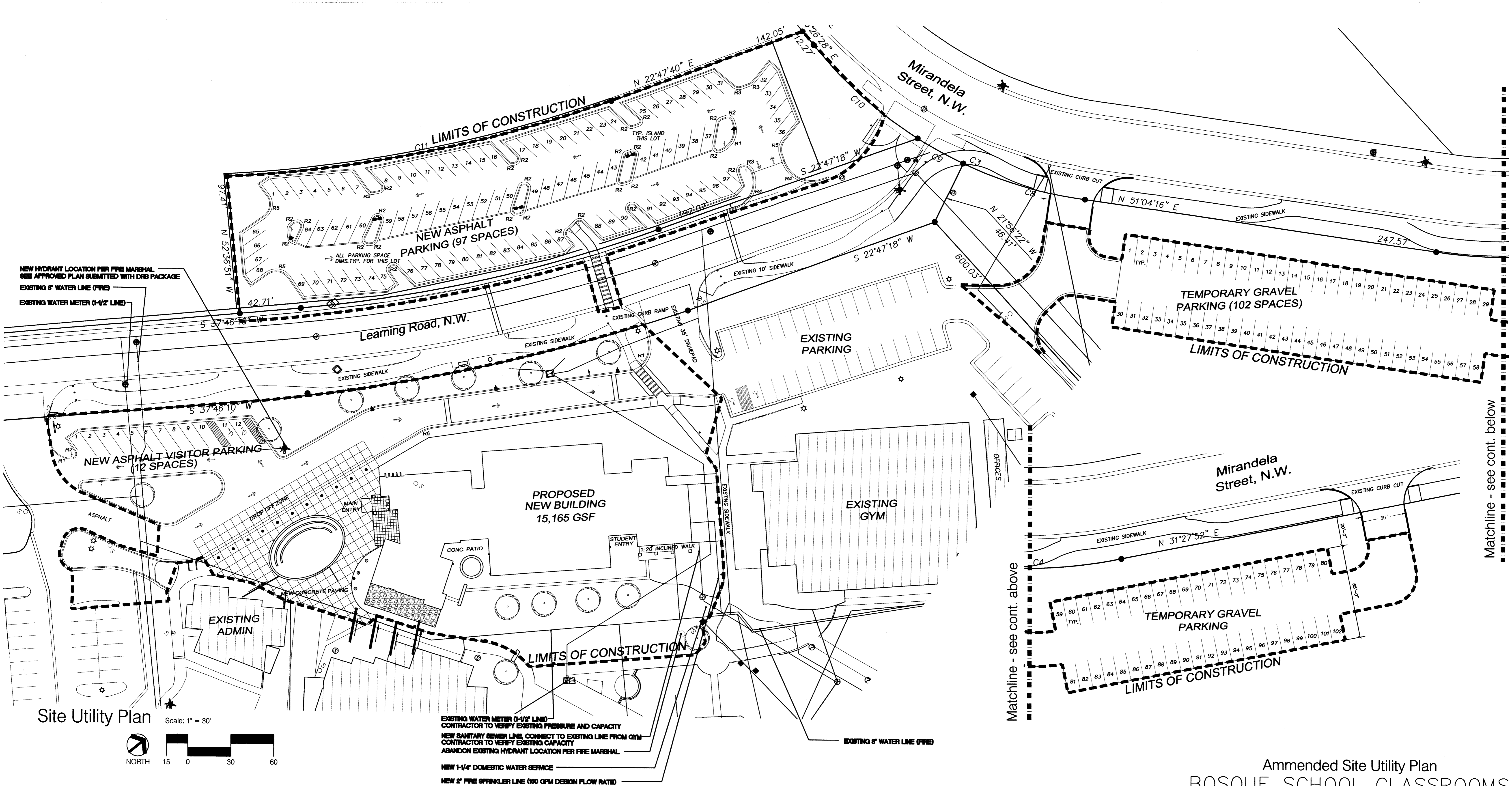
LANDSCAPE CALCULATIONS

Site Area: (2.44 AC.)	122,925 S.F.
Building Area:	- 16,500 S.F.
Total	106,425 S.F.

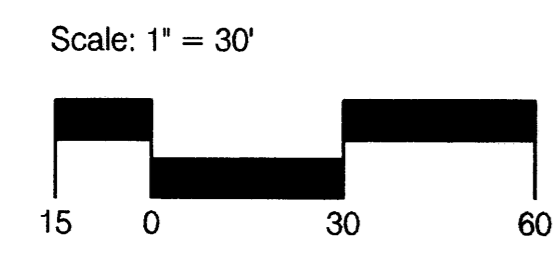
Required Landscape: (15%)	15,964 S.F.
Provided Landscape: (34%)	40,991 S.F.

High Water Use Turf Allowed:	8,223 S.F.
High Water Use Turf Provided:	9,982 S.F.*
Low Water Use Turf Provided:	9,118 S.F.

* The provision of high water use turf campus-wide is significantly below 20% of landscape area.



Site Utility Plan



EXISTING WATER METER (1-1/2" LINE)
 CONTRACTOR TO VERIFY EXISTING PRESSURE AND CAPACITY
 NEW SANITARY SEWER LINE, CONNECT TO EXISTING LINE FROM GYM
 CONTRACTOR TO VERIFY EXISTING CAPACITY
 ABANDON EXISTING HYDRANT LOCATION PER FIRE MARSHAL

NEW 1-1/4" DOMESTIC WATER SERVICE
 NEW 2" FIRE SPRINKLER LINE (100 GPM DESIGN FLOW RATE)

Matchline - see cont. above

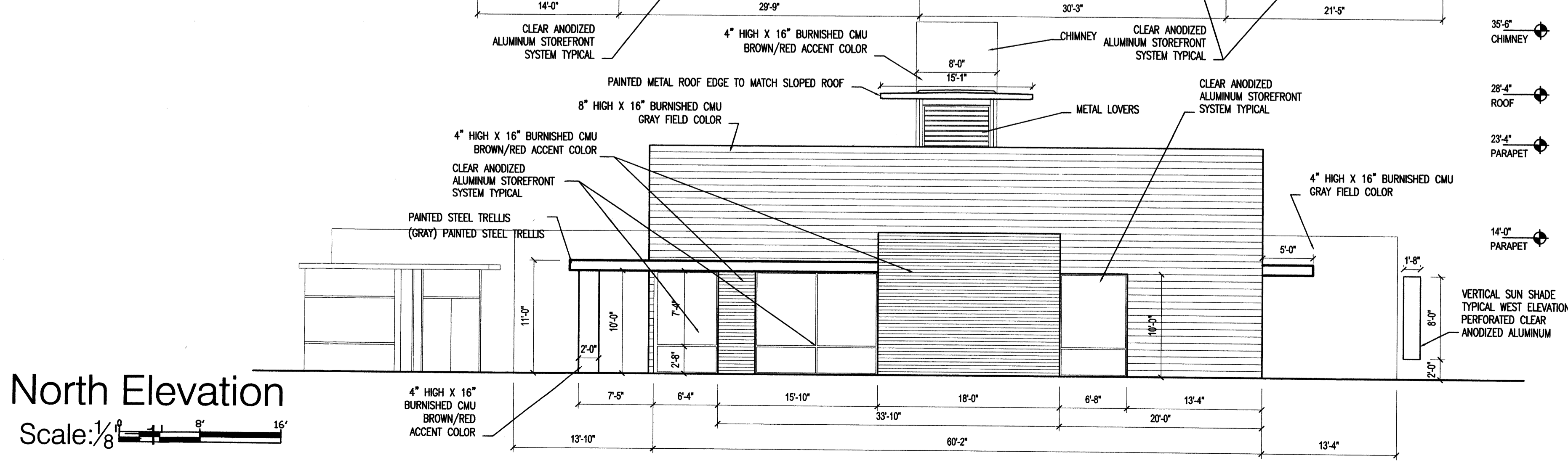
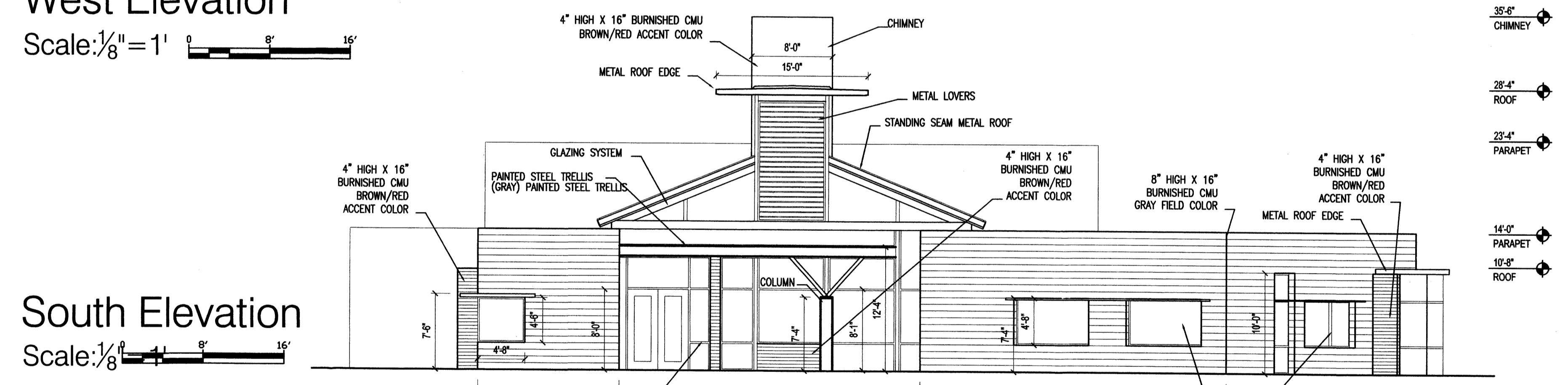
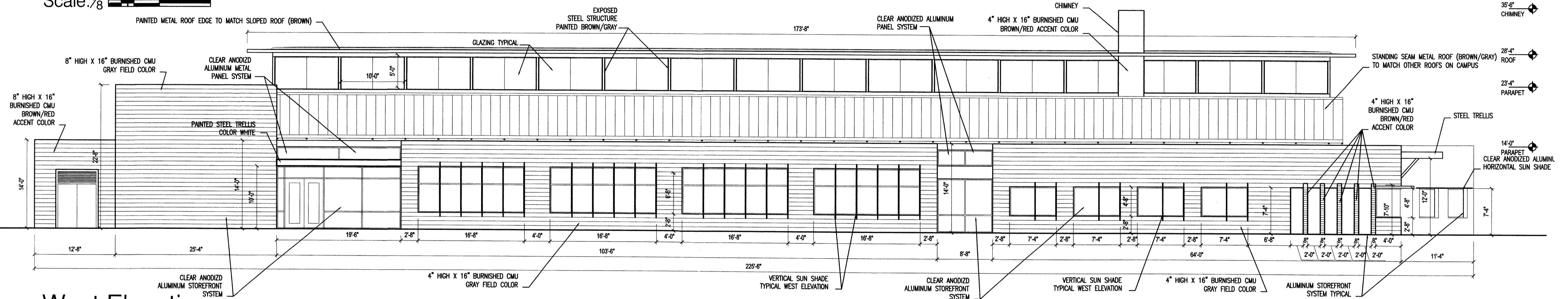
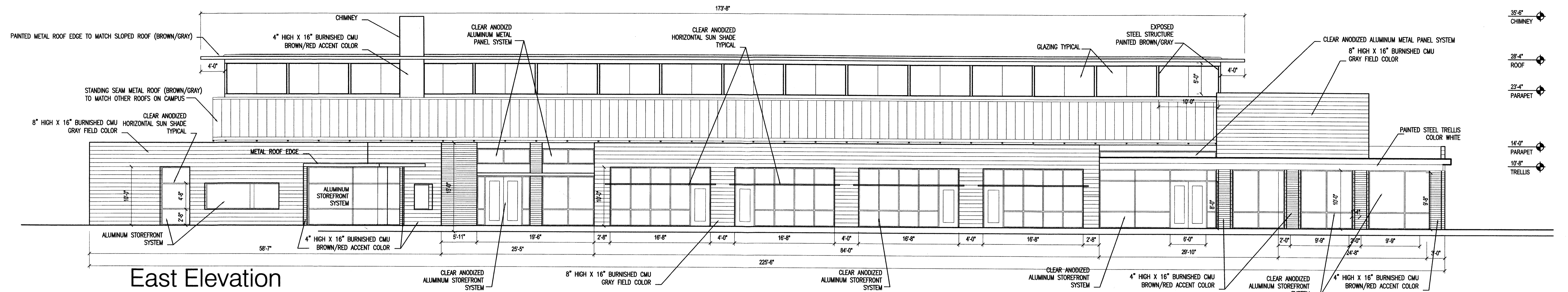
Matchline - see cont. below

Amended Site Utility Plan BOSQUE SCHOOL CLASSROOMS

Prepared By:
ROHDE MAY KELLER McNAMARA
ARCHITECTURE
 PROFESSIONAL CORPORATION
400 Old Avenue, SE Suite 1100 Stone Mountain, Georgia, New Mexico 87102 USA Tel. 505 243 5404

CONSENSUS PLANNING, INC.
 Planning / Landscape Architecture
 302 Eighth Street NW
 Albuquerque, NM 87102
 (505) 764-9801 Fax 842-5495
 e-mail: cp@consensusplanning.com

HIGH MESA Consulting Group
FOUNDED BY NORTHEN AND ASSOCIATES, INC.
 4010-B MIDWAY PARK BLVD. NE • ALBUQUERQUE, NEW MEXICO 87109
 PHONE: 505.346.4200 • FAX: 505.346.4254 • www.highmesacg.com



Building Elevations
BOSQUE SCHOOL CLASSROOMS

Prepared By:
ROHDE MAY KELLER McNAMARA ARCHITECTURE
PROFESSIONAL CORPORATION
400 Old Avenue, SE Suite 1100 Stone Mountain, Atlanta, Georgia 30084

CONSensus PLANNING, INC.
Planning / Landscape Architecture
302 Eighth Street NW
Albuquerque, NM 87102
(505) 764-9801 Fax 842-5495
e-mail: cp@consensusplanning.com

HIGH MESA Consulting Group
ROBERT JEFF WORTENSON AND ASSOCIATES, INC.
4010-B MIDWAY PARK BLVD. NE - ALBUQUERQUE, NEW MEXICO 87109
PHONE: 505.345.4250 • FAX: 505.345.4254 • www.HighMesaCG.com