

CASE NUMBER: Z-02DR5-00808
EPC 00128-00000-01624

This plan is consistent with the specific site development plan approval by the Environmental Planning Commission (EPC) on January 18, 2001 and that the findings and conditions in the Official Notice; Notification of Decision have been complied with:

SITE DEVELOPMENT PLAN

<i>Mick</i>	8/8/02
Traffic Engineer, Transportation Division	Date
<i>Christina Sandoval</i>	6/5/02
Parks & General Services Department	Date
<i>Roger A. Green</i>	6-5-02
Public Works, Water Utilities Division	Date
<i>Bruce L. Bingham</i>	6-25-02
City Engineer, Engineering Division/AMAFA	Date
<i>Shirley</i>	6-4-02
SOLID WASTE	DATE
<i>Janet</i>	8/21/02
City Planner, Albuquerque/Bernalillo	Date
County Planning Division	

PLNZ (10706) 4/96

- NOTES:**
- LANDSCAPING TO BE MAINTAINED BY CITY OF ALBUQUERQUE AFTER CONSTRUCTION.
 - LANDSCAPING WILL COMPLY WITH CITY WATER CONSERVATION AND WATER WASTE ORDINANCES.
 - LANDSCAPING AREA REQUIRED 15% OF (GROSS DEVELOPED AREA - BUILDING FOOTPRINT) - 1156 sqf.
LANDSCAPING AREA PROVIDED - 2246 sqf = 15%.

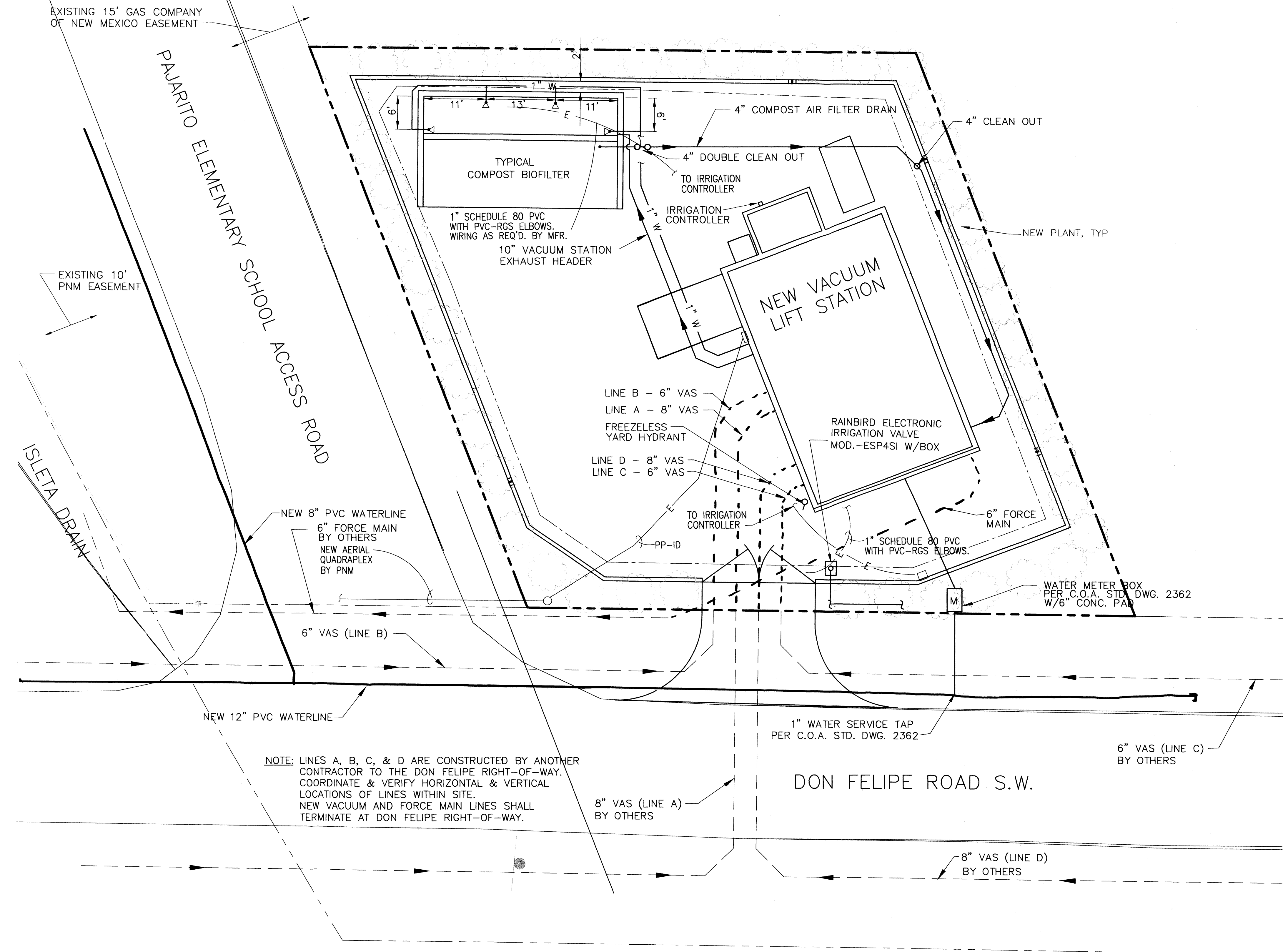
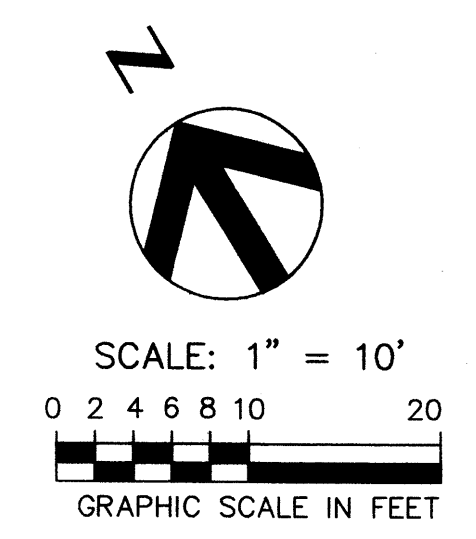
AFO PLANS CHECKING OFFICE
424-3611
APPROVAL DISAPPROVAL
R.C. Sanchez 6-4-02
SIGNATURE & DATE
Access approval only!



BERNALILLO COUNTY PUBLIC WORKS DIVISION	
TITLE: PAJARITO AREA VACUUM STATION SITE, LANDSCAPING, GRADING AND DRAINAGE PLAN	
Design Review Committee	City Engineer Approval
PROJECT NO. TS - 01 - 13 COA - 647291	MAP NO. Q-10, R-10
SHEET C-01	OF 2

AS-BUILT INFORMATION	
CONTRACTOR	DATE
WORK ORDER NO.	DATE
INSPECTOR'S ACCEPTANCE BY	DATE
VERIFICATION BY	DATE
DRAWINGS	DATE
CONSTRUCTION	DATE
MICRO-FILM INFORMATION	
RECORDED BY	NO.
DATE	
BENCH MARKS	
ACS, Aluminum Cap, "2R-10", Don Felipe Road SW	
NM (HPGN) Central Zone, NADB3 (Us.Ft.)	
N = 1 454 487.97, E = 1 502 103.18	
(Converted from NAD27 using Corpcor V.5.11.05)	
Elevation = 4918.05 NAVD88 (Us.Ft.)	
[4918.05 (NAVD88) - 2.61 = 4915.44 (NGVD29)]	
SURVEY INFORMATION	
FIELD NOTES	DATE
NO.	BY
ENGINEER'S SEAL	
NO.	DATE
REVISIONS	BY
DESIGNED BY: JE	DATE: NOV 2001
DRAWN BY: RAG	DATE: NOV 2001
CHECKED BY: WJZ	DATE: NOV 2001

P 001/000930



NOTE: LINES A, B, C, & D ARE CONSTRUCTED BY ANOTHER CONTRACTOR TO THE DON FELIPE RIGHT-OF-WAY. COORDINATE & VERIFY HORIZONTAL & VERTICAL LOCATIONS OF LINES WITHIN SITE. NEW VACUUM AND FORCE MAIN LINES SHALL TERMINATE AT DON FELIPE RIGHT-OF-WAY.

- NOTES:
1. ALL UNDERGROUND UTILITIES SHOWN ON THIS PLAN ARE APPROXIMATE LOCATIONS. VERIFY LOCATION OF ALL UNDERGROUND UTILITIES BEFORE COMMENCING WORK.
 2. VACUUM STATION & ASSOCIATED PIPING CONNECTING TO SEWER LINES CONSTRUCTED BY OTHERS AND ARE ASSUMED TO BE COMPLETE PRIOR TO CONSTRUCTION OF THIS PROJECT. PROTECT PLUGGED PIPES UNTIL FINAL CONNECTION IS MADE.
 3. NOT USED
 4. NOT USED
 5. TRENCHING, BACKFILL, COMPACTION, AND PAVEMENT REPLACEMENT ARE TO BE PER CITY OF ALBUQUERQUE STANDARD DETAILS AND SPECIFICATIONS.

AS BUILT INFORMATION		BENCH MARKS		SURVEY INFORMATION		ENGINEER'S SEAL	
CONTRACTOR	DATE	ACCS. Aluminum Cap, "2R-10", Don Felipe Road SW	DATE	NO.	BY	NO.	DATE
INSPECTED BY	DATE	NM (HPGN) Central Zone, NAD83 (Us.ft.)					
FIELD VERIFICATION BY	DATE	N= 1 454 487.97, E= 1 502 103.18					
VERIFICATION BY	DATE	(Converted from NAD27 using Corposcon V.5.11.05)					
CORRECTED BY	DATE	Elevation= 4918.05 NAVD88 (Us.Ft.)					
MICRO-FILM INFORMATION	DATE	[4918.05 (NAVD88) - 2.61 = 4915.44 (NGVD29)]					
RECORDED BY	NO.						



BERNALILLO COUNTY
PUBLIC WORKS DIVISION

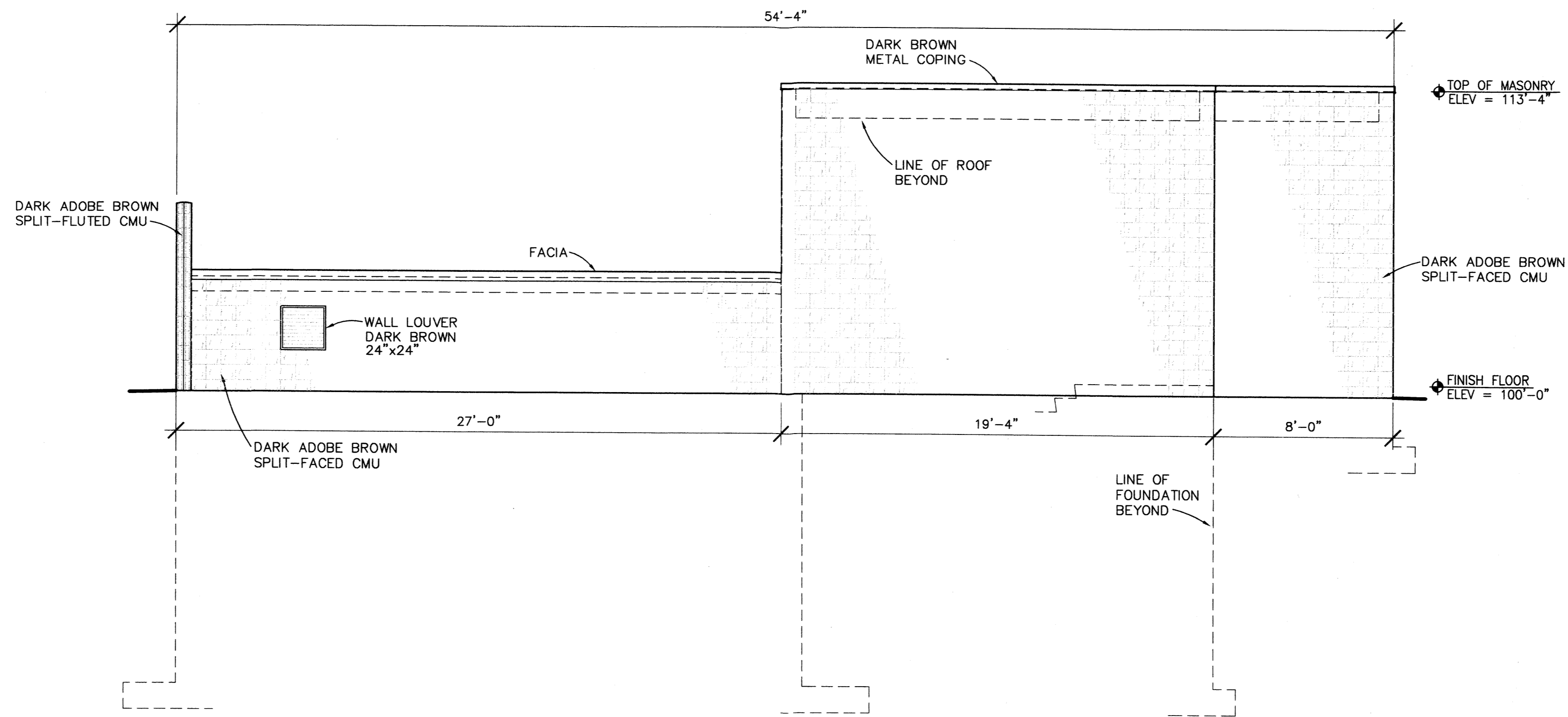
TITLE: PAJARITO AREA VACUUM STATION
UTILITY PLAN

Design Review Committee	City Engineer Approval	U.S./M.P.	U.S./M.P.

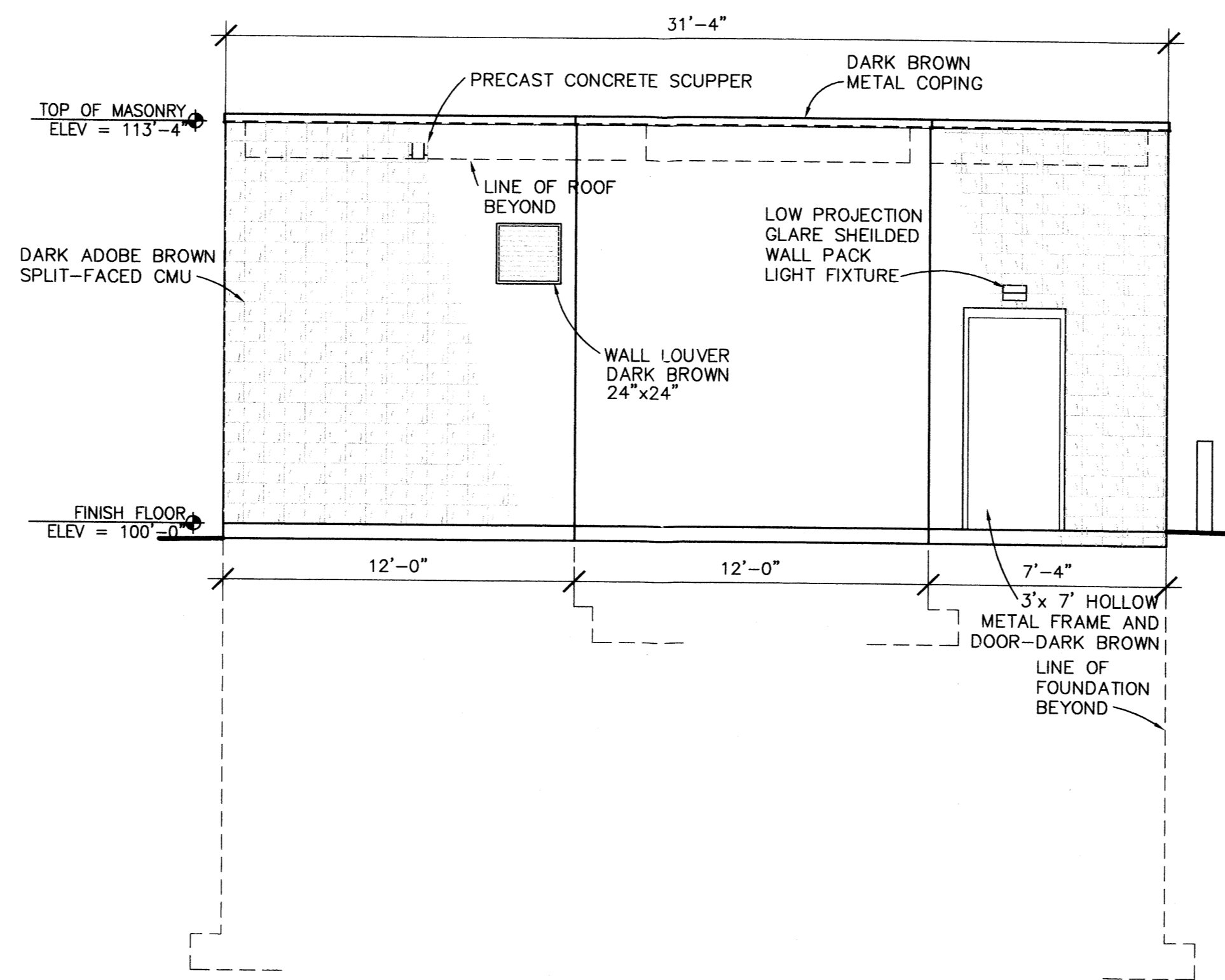
PROJECT NO. TS - 01 - 13
COA - 647291

MAP NO. Q-10, R-10

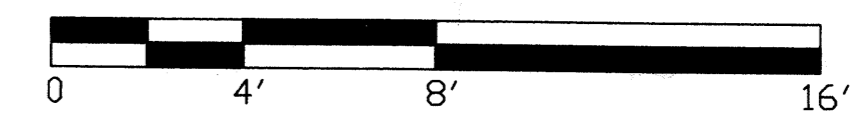
SHEET C-02 OF 2



EAST ELEVATION
1/4"=1'-0"



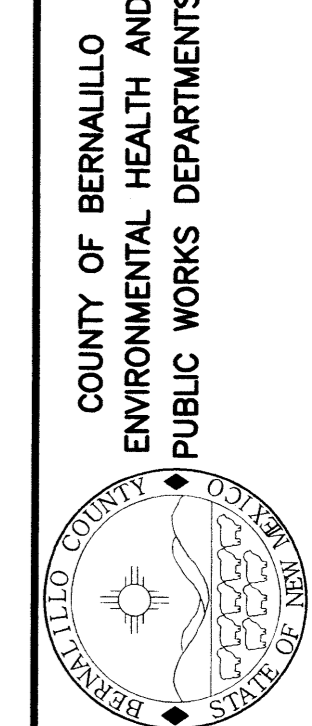
NORTH ELEVATION
1/4"=1'-0"



REVISIONS TO DRAWINGS			
NO.	DESCRIPTION	REV. BY	CHK. BY

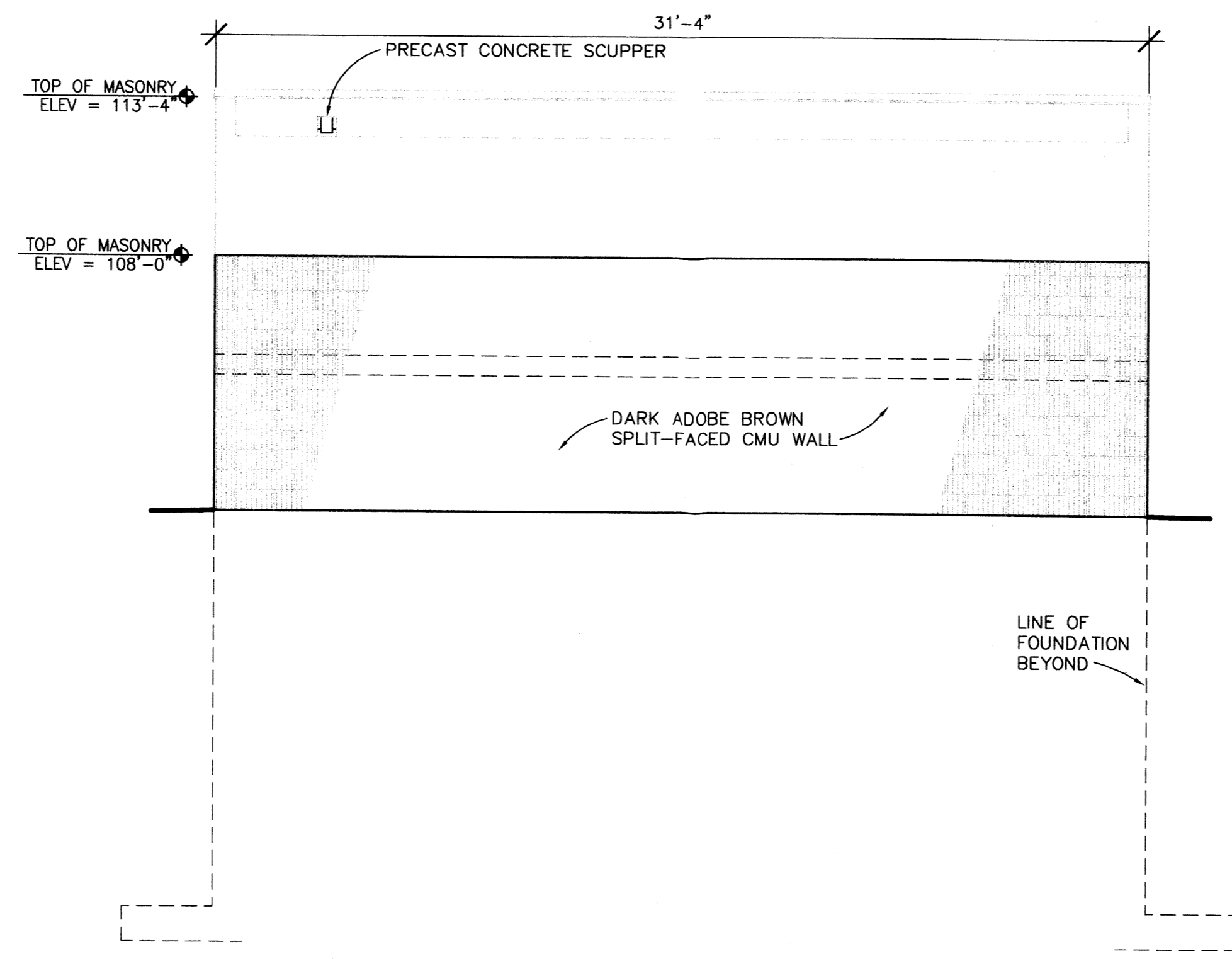
HDR
HDR ENGINEERING, INC.
 2155 LOS ANGELES BLVD., NE
 SUITE #600
 ALBUQUERQUE, NM. 87110

PROJECT NO. _____
 FILE NAME: _____
 PLOT DATE: _____
 DRAWN BY: _____
 DESIGNED BY: _____
 CHECKED BY: _____

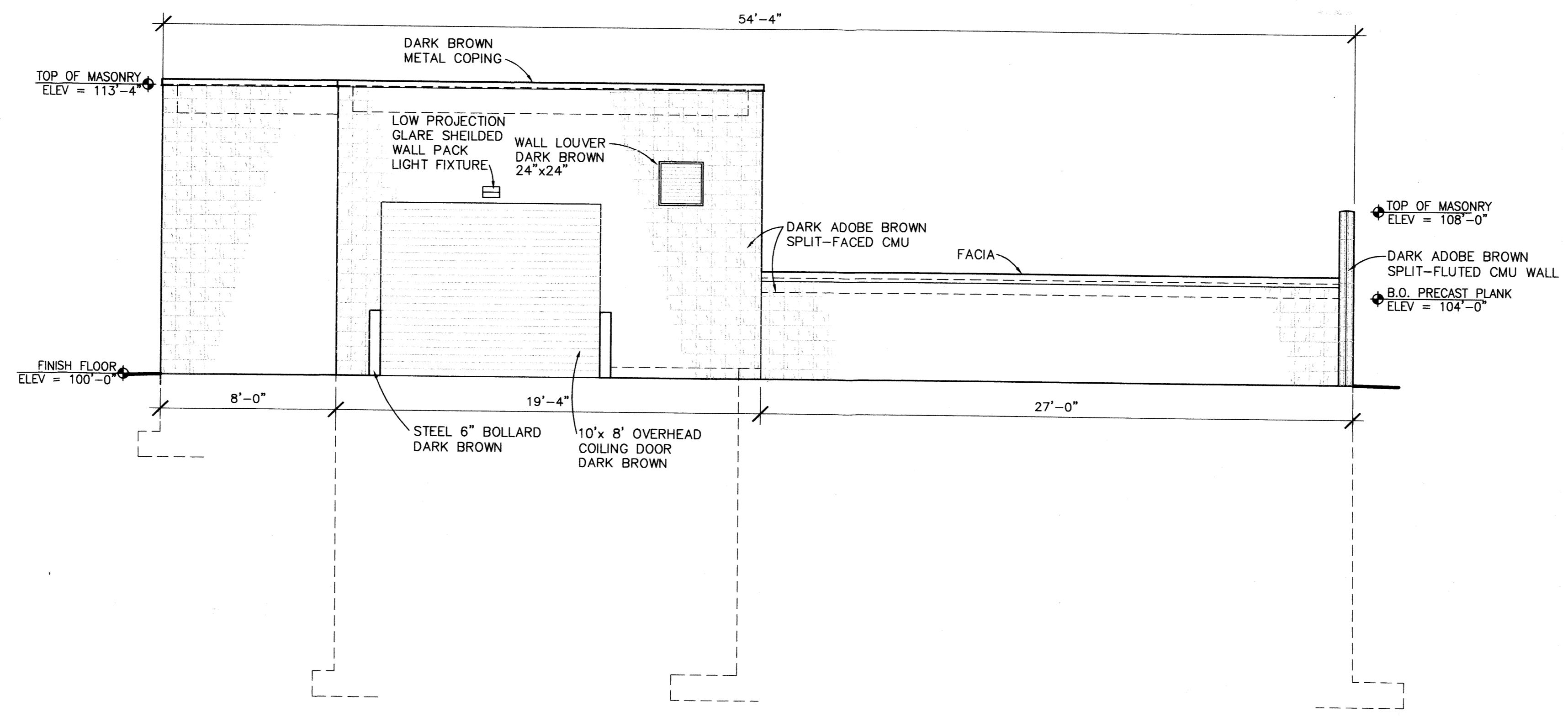


PAJARITO AREA VACUUM PUMP STATION
 ELEVATIONS
 DATE: NOVEMBER 2000

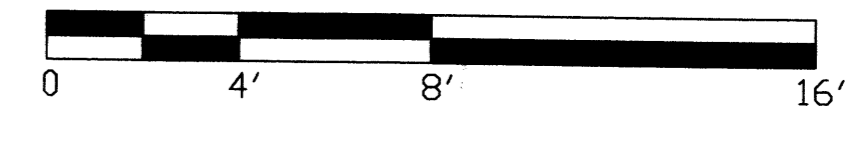
ARCHITECTURE
 SHEET
A-1
 OF
3
 NO. 1
 REV. NO. 0



SOUTH ELEVATION
1/4"=1'-0"



WEST ELEVATION
1/4"=1'-0"

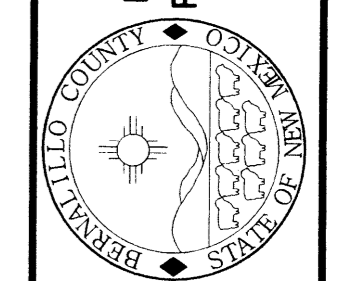


REVISIONS TO DRAWINGS	
NO.	DESCRIPTION

HDR
HDR ENGINEERING, INC.
2155 LOMA DEL VADO, NE
SUITE 100
ALBUQUERQUE, NM 87110

PROJECT NO.	
FILE NAME	
PLOT DATE	
DRAWN BY	
DESIGNED BY	
CHECKED BY	

COUNTY OF BERNALILLO
ENVIRONMENTAL HEALTH AND
PUBLIC WORKS DEPARTMENTS



PAJARITO AREA VACUUM PUMP STATION
ELEVATIONS
DATE: NOVEMBER 2000

ARCHITECTURE SHEET	A-2	OF	3
NO.	2		
REV. NO.	0	CITY PROJECT NO.	

