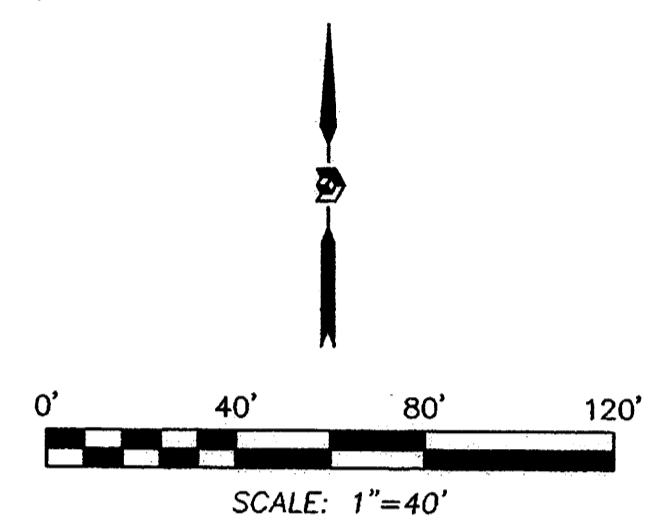


Plat of
Tracts A and B
Diamond Shamrock Subdivision
 City of Albuquerque, Bernalillo County, New Mexico
 February 2011

RECORDING STAMP
 DOCH 2011048756
 06/24/2011 02:40 PM Page: 2 of 2
 PLAT R: 12.00 B: 2011C P: 0049 M. Toulouse Oliveira, Bernalillo Co.



Legend

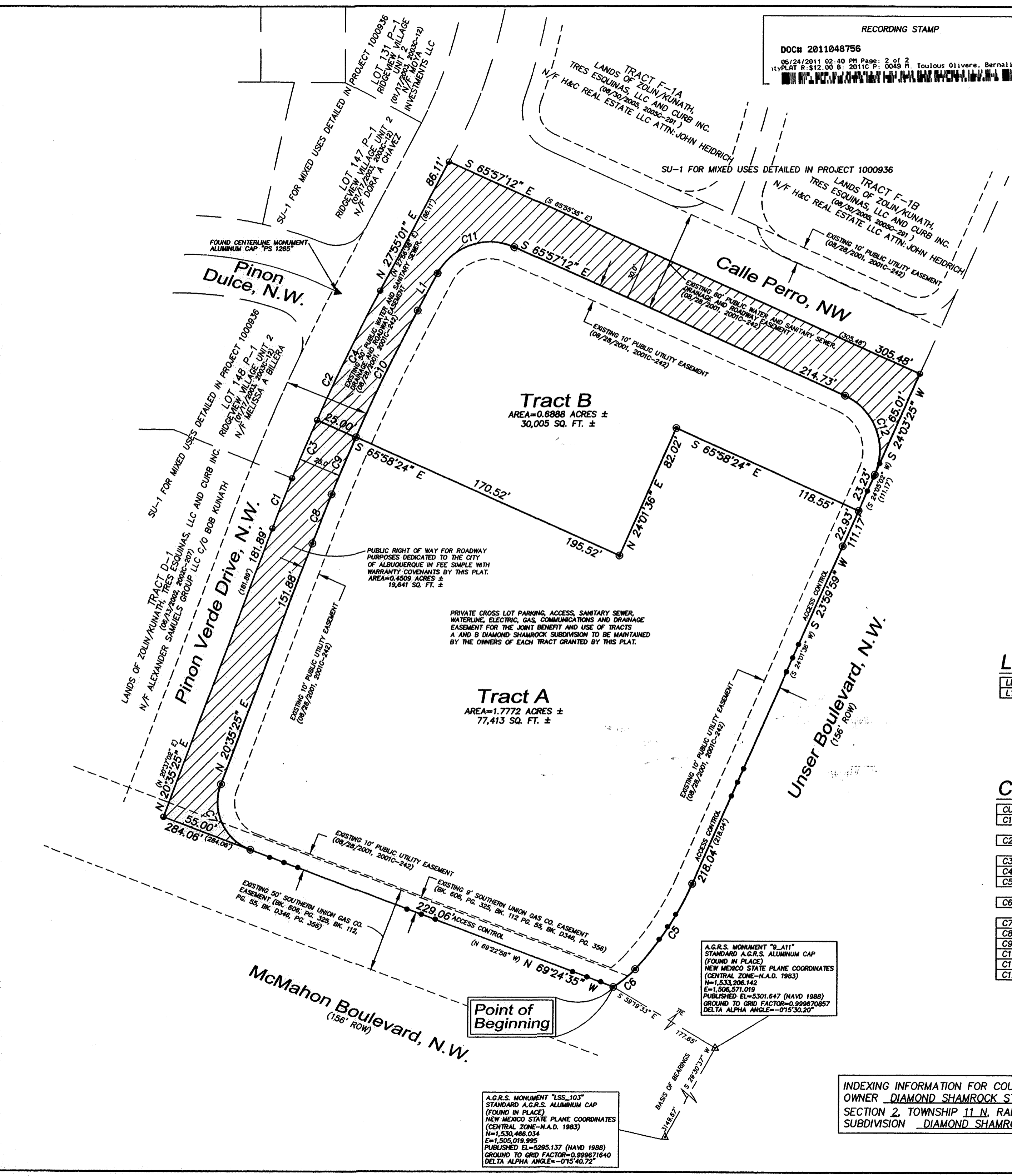
- N 90°00'00" E MEASURED BEARING AND DISTANCES
- (N 90°00'00" E) RECORD BEARINGS AND DISTANCES
- FOUND AND USED MONUMENT AS DESIGNATED
- DENOTES NO. 4 REBAR WITH YELLOW PLASTIC CAP "PS 11993" SET THIS SURVEY
- △ FOUND ALUMINUM AGRS MONUMENT AS DESIGNATED
- DENOTES PK MAIL WITH WASHER STAMPED "PS 11993" SET THIS SURVEY

Line Table

LINE	BEARING	DISTANCE
L1	S 27°55'01" W	25.02'

Curve Table

CURVE	RADIUS	ARC LENGTH	TANGENT	DELTA ANGLE	CHORD BEARING	CHORD LENGTH
C1	1200.00'	31.70'	15.85'	1°30'49"	S 21°20'51" W	31.70'
	(R=1200.00')	(L=31.70')	(T=15.85')	(Δ=01°30'49")	(CH=N 21°22'28" E)	(31.70')
C2	1200.00'	121.74'	60.92'	5°48'45"	S 25°02'06" W	121.69'
	(R=1200.00')	(L=121.74')	(T=60.92')	(Δ=05°48'45")	(CH=N 25°03'43" E)	(121.69')
C3	1200.00'	37.22'	18.61'	1°46'38"	S 23°01'02" W	37.22'
C4	1200.00'	84.52'	42.28'	4°02'07"	S 25°55'25" W	84.50'
C5	180.00'	60.81'	30.70'	19°21'22"	N 33°40'40" E	60.52'
C6	(R=180.00')	(L=60.81')	(T=30.70')	(Δ=19°21'22")	(CH=S 33°42'17" W)	(60.52')
	(R=65.00')	(L=16.61')	(T=8.35')	(Δ=14°38'13")	(CH=S 50°42'11" W)	(16.56')
C7	30.00'	47.12'	30.00'	89°59'59"	S 24°24'34" E	42.43'
C8	1174.60'	31.03'	15.52'	1°30'49"	S 21°20'50" W	31.03'
C9	1175.10'	36.39'	18.20'	1°46'28"	S 23°00'58" W	36.39'
C10	1175.10'	82.82'	41.43'	4°02'17"	S 25°55'21" W	82.80'
C11	35.00'	52.61'	32.71'	86°07'47"	S 70°58'55" W	47.80'
C12	35.00'	54.98'	35.01'	90°00'37"	N 20°56'53" W	49.50'



Tract A
 AREA=1.7772 ACRES ±
 77,413 SQ. FT. ±

Tract B
 AREA=0.6888 ACRES ±
 30,005 SQ. FT. ±

A.G.R.S. MONUMENT "LSS_103"
 STANDARD A.G.R.S. ALUMINUM CAP
 (FOUND IN PLACE)
 NEW MEXICO STATE PLANE COORDINATES
 (CENTRAL ZONE-N.A.D. 1983)
 N=1,530,466.034
 E=1,505,019.995
 PUBLISHED EL=5295.137 (NAVD 1988)
 GROUND TO GRID FACTOR=0.999671640
 DELTA ALPHA ANGLE=-0°15'40.72"

A.G.R.S. MONUMENT "9_A11"
 STANDARD A.G.R.S. ALUMINUM CAP
 (FOUND IN PLACE)
 NEW MEXICO STATE PLANE COORDINATES
 (CENTRAL ZONE-N.A.D. 1983)
 N=1,533,206.142
 E=1,506,571.019
 PUBLISHED EL=5301.647 (NAVD 1988)
 GROUND TO GRID FACTOR=0.999670657
 DELTA ALPHA ANGLE=-0°15'30.20"

INDEXING INFORMATION FOR COUNTY CLERK
 OWNER DIAMOND SHAMROCK STATIONS, INC.
 SECTION 2, TOWNSHIP 11 N, RANGE 2 E,
 SUBDIVISION DIAMOND SHAMROCK SUBDIVISION



OFFICE LOCATION:
 5571 Midway Park Place, NE
 Albuquerque, NM 87109
 MAILING ADDRESS:
 PO Box 90636
 Albuquerque, NM 87199

866.442.8011 TOLL FREE
 505.856.5700 PHONE
 505.856.7900 FAX

C:\P\01107P.dwg, 2/18/2011 7:51:56 AM