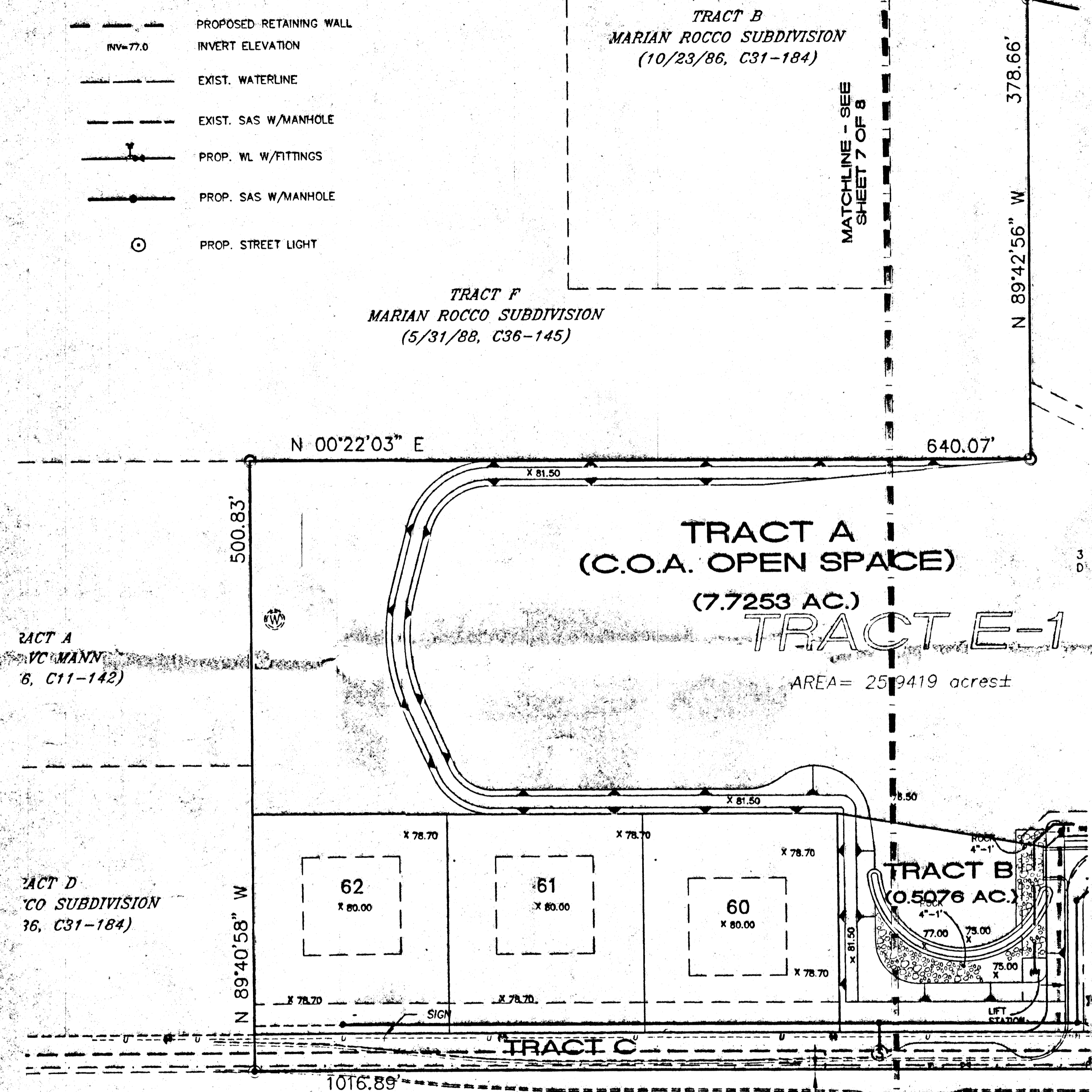


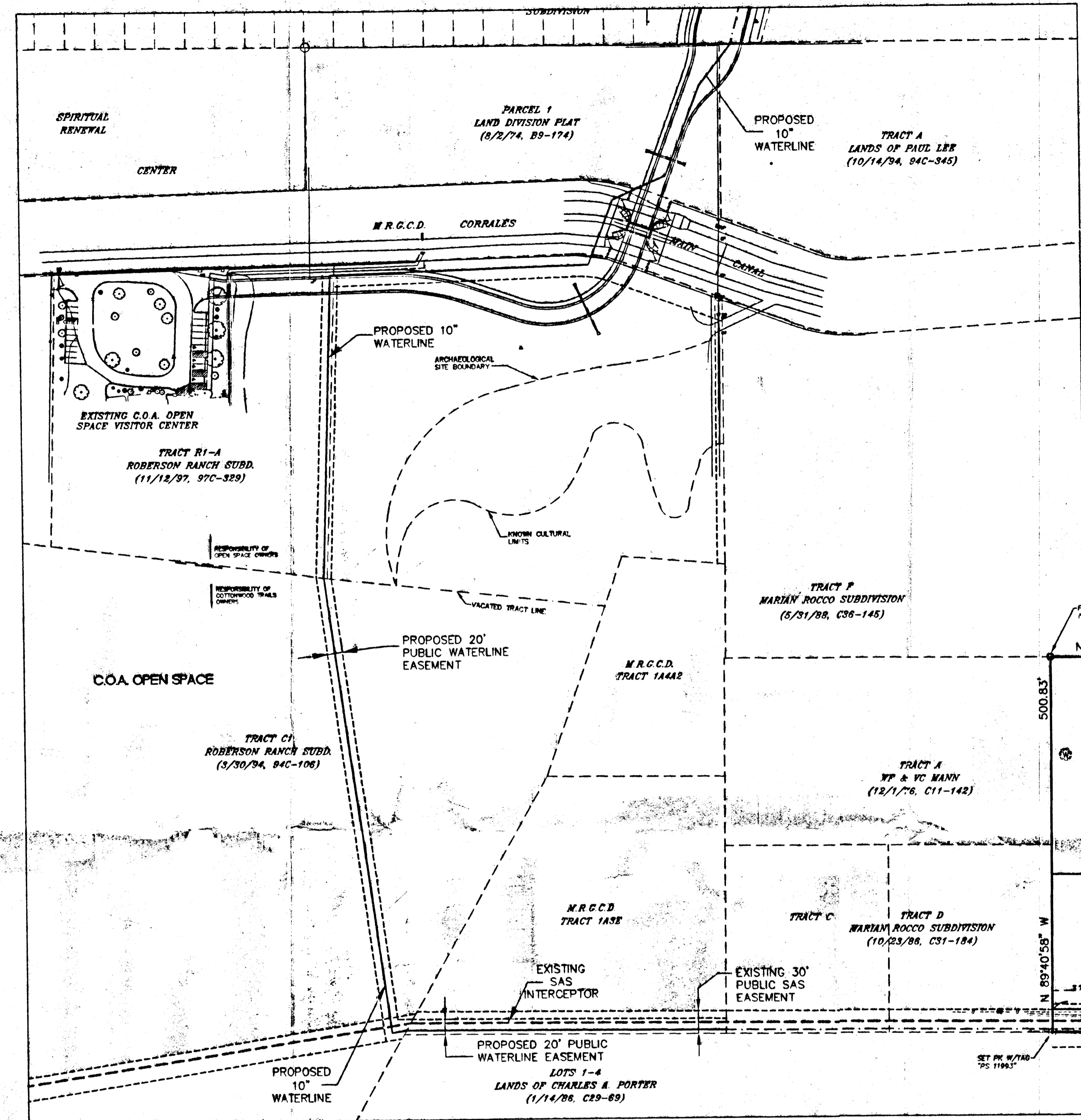
LEGEND

- PROPOSED RETAINING WALL
- INV=77.0 INVERT ELEVATION
- EXIST. WATERLINE
- EXIST. SAS W/MANHOLE
- PROP. WL W/FITTINGS
- PROP. SAS W/MANHOLE
- PROP. STREET LIGHT

SCALE: 1"=80'



BOSQUE DEL RIO
UNIT 1
(8/29/96, 96C-377)



OFFSITE UTILITY CONNECTION
SCALE: 1"=100'

APPROVALS PROJECT # 1001074

DAB CASE #: 01450-00000-00104
EPC CASE NO. 01228 00000 00244

<i>Richard D. Dute</i>	5-16-01
TRAFFIC ENGINEERING, TRANS. DEV. DIV., P.W.D.	DATE
<i>Shirley E. Anderson</i>	5-16-01
PUBLIC DEPARTMENT	DATE
<i>Ronald A. ...</i>	5-16-01
UTILITY DEVELOPMENT DIV., P.W.D.	DATE
<i>Edward M. ...</i>	5/16/01
CITY ENGINEER, PUBLIC WORKS DEPT.	DATE

APPROVAL AND CONDITIONAL ACCEPTANCE AS SPECIFIED BY THE ALBUQUERQUE SUBDIVISION ORDINANCE, CHAPTER 14, ARTICLE 14 OF THE REVISED ORDINANCES OF ALBUQUERQUE, N.M., 1994.

John ... 5/25/01
CITY PLANNER, ALBUQUERQUE PLANNING DIVISION DATE

CONDITIONS

1. THE FOLLOWING CONDITIONS ARE FOUND ON THE "OFFICIAL NOTICE OF DECISION (01225 00000 00244)", DATED APRIL 19, 2001 AND ARE INCORPORATED INTO THIS PLAN.
2. IF ANY SUBSURFACE OR SURFACE CULTURAL MATERIAL IS FOUND DURING CONSTRUCTION, CONTRACTOR MUST IMMEDIATELY STOP CONSTRUCTION AND CONTACT OPEN SPACE DIVISION.
3. THE EXISTING TOPSOIL SHALL BE SET ASIDE AND REPLACED AS TOPSOIL TO THE DISTURBED AREA.
4. THE DISTURBED AREA SHALL BE REVEGETATED AS PER THE RECOMMENDATION OF THE OPEN SPACE DIVISION.
5. A SPECIAL SUB-GRADE MATERIAL TO BE APPROVED BY THE OPEN SPACE DIVISION, SHALL BE USED IN CONSTRUCTION TO PREVENT SUBSIDENCE.
6. ALL MITIGATION MEASURES SHALL BE APPROVED AND OVERSEEN BY THE OPEN SPACE DIVISION.

PROJECT 1001074

EXTRAORDINARY FACILITY PLAN
PIEDRAS MARCADAS VISITOR CENTER OPEN SPACE
TRACTS C-1, R-1A, ROBERSON RANCH

ISAACSON & ARFMAN, P.A.
Consulting Engineering Associates
128 Monroe Street N.E.
Albuquerque, New Mexico