



PLAT OF  
**TRACTS G-2A-1-A-1, G-2A-1-A-2,  
 & G-2A-1-A-3, SEVEN-BAR RANCH**

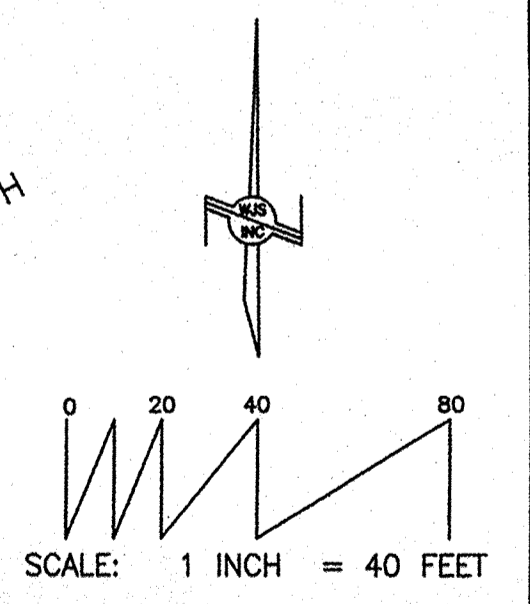
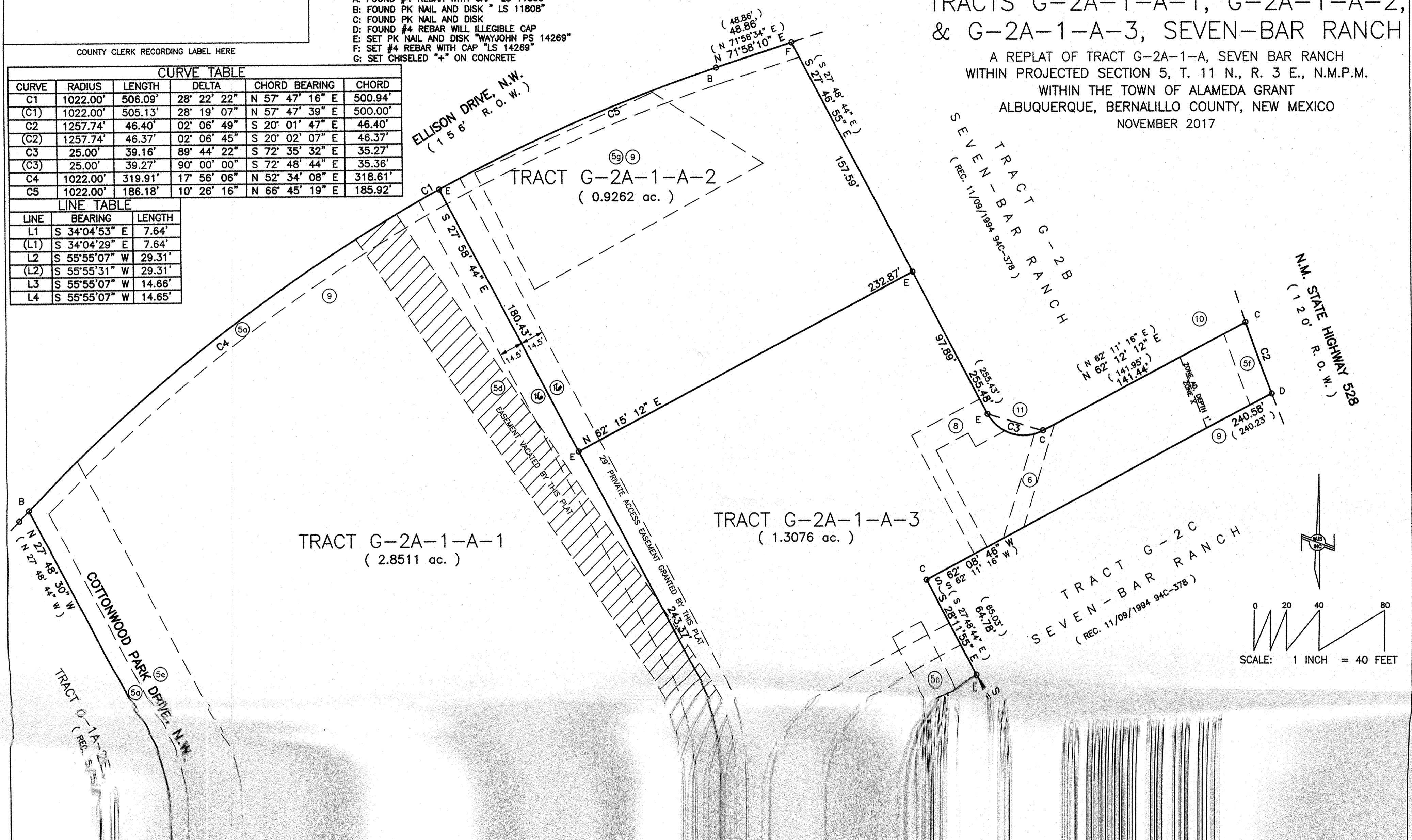
A REPLAT OF TRACT G-2A-1-A, SEVEN BAR RANCH  
 WITHIN PROJECTED SECTION 5, T. 11 N., R. 3 E., N.M.P.M.  
 WITHIN THE TOWN OF ALAMEDA GRANT  
 ALBUQUERQUE, BERNALILLO COUNTY, NEW MEXICO  
 NOVEMBER 2017

- FOUND/SET MONUMENT LEGEND:  
 A: FOUND #4 REBAR WITH CAP "LS 11808"  
 B: FOUND PK NAIL AND DISK "LS 11808"  
 C: FOUND PK NAIL AND DISK  
 D: FOUND #4 REBAR WILL ILLEGIBLE CAP  
 E: SET PK NAIL AND DISK "WAYJOHN PS 14269"  
 F: SET #4 REBAR WITH CAP "LS 14269"  
 G: SET CHISELED "+" ON CONCRETE

COUNTY CLERK RECORDING LABEL HERE

CURVE TABLE					
CURVE	RADIUS	LENGTH	DELTA	CHORD BEARING	CHORD
C1	1022.00'	506.09'	28° 22' 22"	N 57° 47' 16" E	500.94'
(C1)	1022.00'	505.13'	28° 19' 07"	N 57° 47' 39" E	500.00'
C2	1257.74'	46.40'	02° 06' 49"	S 20° 01' 47" E	46.40'
(C2)	1257.74'	46.37'	02° 06' 45"	S 20° 02' 07" E	46.37'
C3	25.00'	39.16'	89° 44' 22"	S 72° 35' 32" E	35.27'
(C3)	25.00'	39.27'	90° 00' 00"	S 72° 48' 44" E	35.36'
C4	1022.00'	319.91'	17° 56' 06"	N 52° 34' 08" E	318.61'
C5	1022.00'	186.18'	10° 26' 16"	N 66° 45' 19" E	185.92'

LINE TABLE		
LINE	BEARING	LENGTH
L1	S 34°04'53" E	7.64'
(L1)	S 34°04'29" E	7.64'
L2	S 55°55'07" W	29.31'
(L2)	S 55°55'31" W	29.31'
L3	S 55°55'07" W	14.66'
L4	S 55°55'07" W	14.65'



- FOUND/SET MONUMENT LEGEND:  
 A: FOUND #4 REBAR WITH CAP "LS 11808"  
 B: FOUND PK NAIL AND DISK "LS 11808"  
 C: FOUND PK NAIL AND DISK  
 D: FOUND #4 REBAR WILL ILLEGIBLE CAP  
 E: SET PK NAIL AND DISK "WAYJOHN PS 14269"  
 F: SET #4 REBAR WITH CAP "LS 14269"  
 G: SET CHISELED "+" ON CONCRETE

COUNTY CLERK RECORDING LABEL HERE

CURVE TABLE

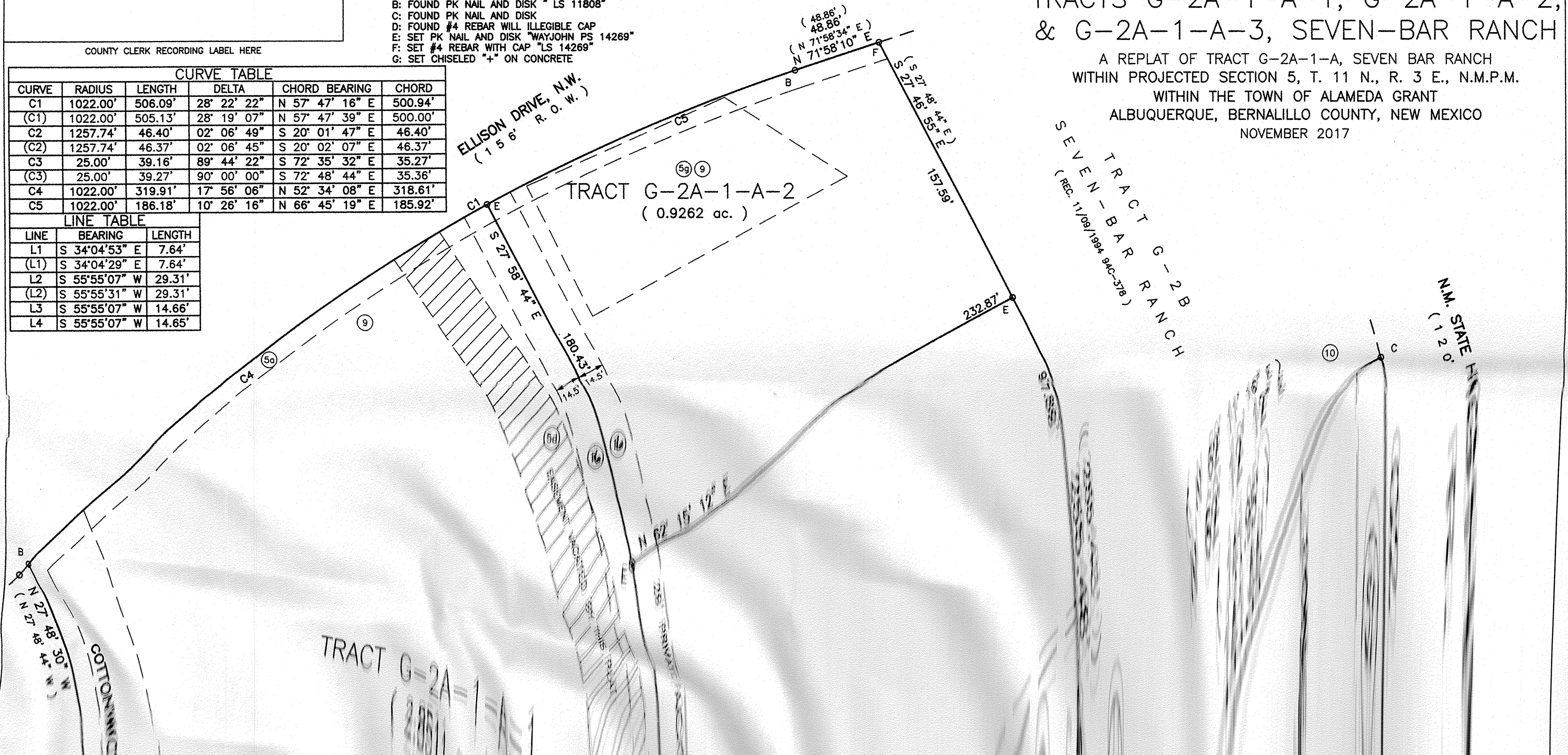
CURVE	RADIUS	LENGTH	DELTA	CHORD BEARING	CHORD
C1	1022.00'	506.09'	28° 22' 22"	N 57° 47' 16" E	500.94'
(C1)	1022.00'	505.13'	28° 19' 07"	N 57° 47' 39" E	500.00'
C2	1257.74'	46.40'	02° 06' 49"	S 20° 01' 47" E	46.40'
(C2)	1257.74'	46.37'	02° 06' 45"	S 20° 02' 07" E	46.37'
C3	25.00'	39.16'	89° 44' 22"	S 72° 35' 32" E	35.27'
(C3)	25.00'	39.27'	90° 00' 00"	S 72° 48' 44" E	35.36'
C4	1022.00'	319.91'	17° 56' 06"	N 52° 34' 08" E	318.61'
C5	1022.00'	186.18'	10° 26' 16"	N 66° 45' 19" E	185.92'

LINE TABLE

LINE	BEARING	LENGTH
L1	S 34°04'53" E	7.64'
(L1)	S 34°04'29" E	7.64'
L2	S 55°55'07" W	29.31'
(L2)	S 55°55'31" W	29.31'
L3	S 55°55'07" W	14.66'
L4	S 55°55'07" W	14.65'

PLAT OF  
 TRACTS G-2A-1-A-1, G-2A-1-A-2,  
 & G-2A-1-A-3, SEVEN-BAR RANCH

A REPLAT OF TRACT G-2A-1-A, SEVEN BAR RANCH  
 WITHIN PROJECTED SECTION 5, T. 11 N., R. 3 E., N.M.P.M.  
 WITHIN THE TOWN OF ALAMEDA GRANT  
 ALBUQUERQUE, BERNALILLO COUNTY, NEW MEXICO  
 NOVEMBER 2017



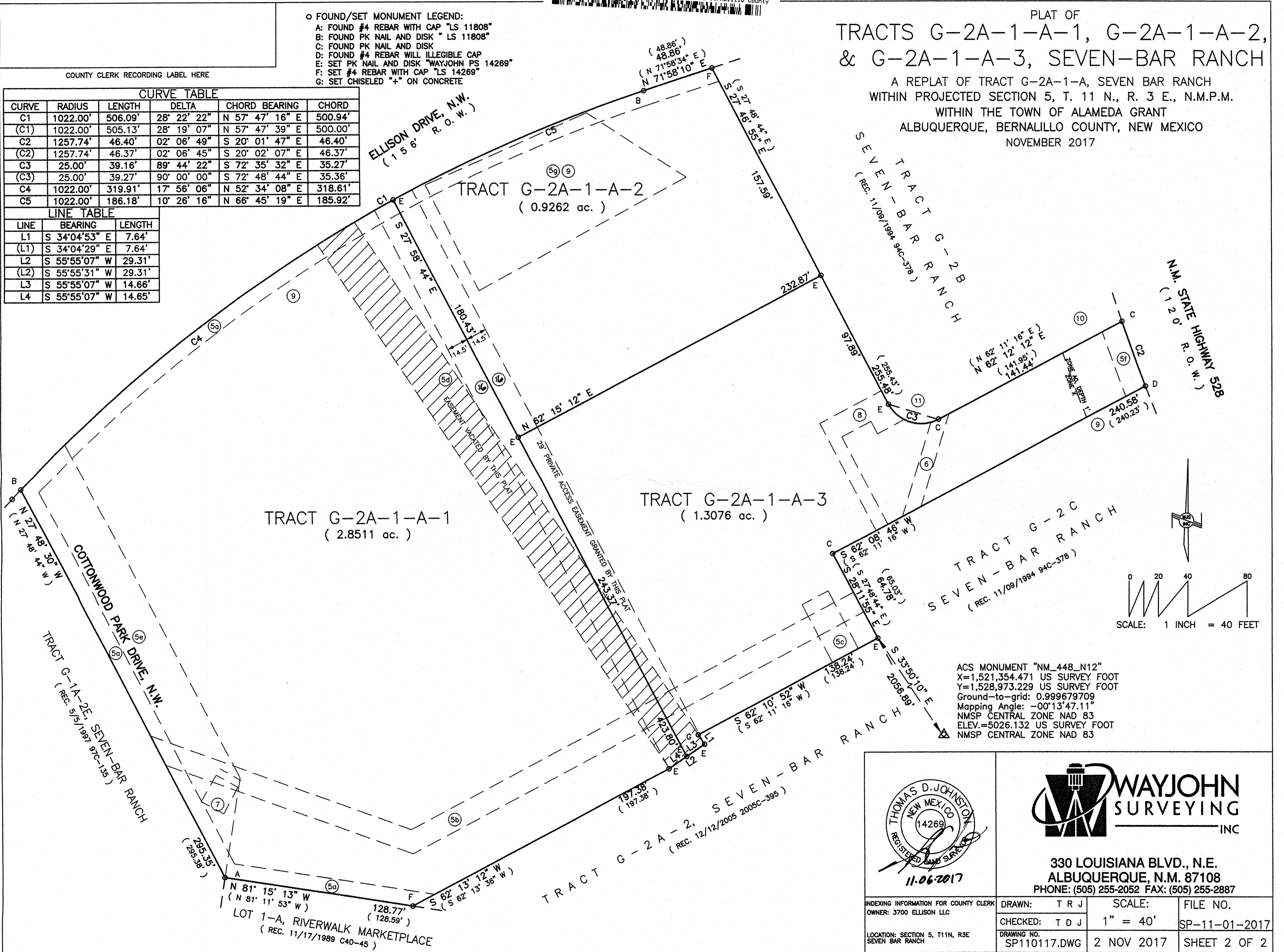
- FOUND/SET MONUMENT LEGEND:  
 A: FOUND #4 REBAR WITH CAP "LS 11808"  
 B: FOUND PK NAIL AND DISK "LS 11808"  
 C: FOUND PK NAIL AND DISK  
 D: FOUND #4 REBAR WILL ILLEGIBLE CAP  
 E: SET PK NAIL AND DISK "WAYJOHN PS 14269"  
 F: SET #4 REBAR WITH CAP "LS 14269"  
 G: SET CHISELED "+" ON CONCRETE

COUNTY CLERK RECORDING LABEL HERE

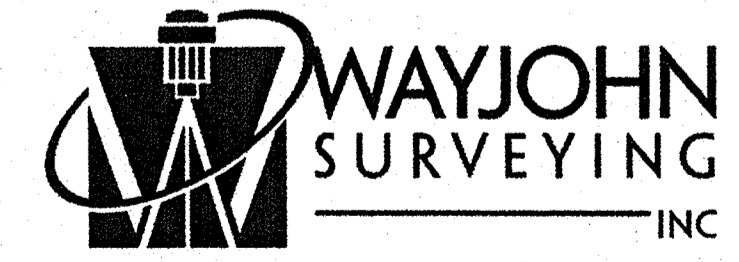
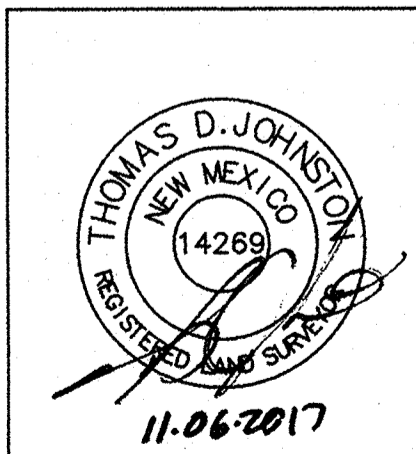
CURVE TABLE					
CURVE	RADIUS	LENGTH	DELTA	CHORD BEARING	CHORD
C1	1022.00'	506.09'	28° 22' 22"	N 57° 47' 16" E	500.94'
(C1)	1022.00'	505.13'	28° 19' 07"	N 57° 47' 39" E	500.00'
C2	1257.74'	46.40'	02° 06' 49"	S 20° 01' 47" E	46.40'
(C2)	1257.74'	46.37'	02° 06' 45"	S 20° 02' 07" E	46.37'
C3	25.00'	39.16'	89° 44' 22"	S 72° 35' 32" E	35.27'
(C3)	25.00'	39.27'	90° 00' 00"	S 72° 48' 44" E	35.36'
C4	1022.00'	319.91'	17° 56' 06"	N 52° 34' 08" E	318.61'
C5	1022.00'	186.18'	10° 26' 16"	N 66° 45' 19" E	185.92'

LINE TABLE		
LINE	BEARING	LENGTH
L1	S 34°04'53" E	7.64'
(L1)	S 34°04'29" E	7.64'
L2	S 55°55'07" W	29.31'
(L2)	S 55°55'31" W	29.31'
L3	S 55°55'07" W	14.66'
L4	S 55°55'07" W	14.65'

PLAT OF  
**TRACTS G-2A-1-A-1, G-2A-1-A-2,  
 & G-2A-1-A-3, SEVEN-BAR RANCH**  
 A REPLAT OF TRACT G-2A-1-A, SEVEN BAR RANCH  
 WITHIN PROJECTED SECTION 5, T. 11 N., R. 3 E., N.M.P.M.  
 WITHIN THE TOWN OF ALAMEDA GRANT  
 ALBUQUERQUE, BERNALILLO COUNTY, NEW MEXICO  
 NOVEMBER 2017



ACS MONUMENT "NM\_448\_N12"  
 X=1,521,354.471 US SURVEY FOOT  
 Y=1,528,973.229 US SURVEY FOOT  
 Ground-to-grid: 0.999679709  
 Mapping Angle: -00°13'47.11"  
 NMSP CENTRAL ZONE NAD 83  
 ELEV.=5026.132 US SURVEY FOOT  
 NMSP CENTRAL ZONE NAD 83



330 LOUISIANA BLVD., N.E.  
 ALBUQUERQUE, N.M. 87108  
 PHONE: (505) 255-2052 FAX: (505) 255-2887

INDEXING INFORMATION FOR COUNTY CLERK OWNER: 3700 ELLISON LLC LOCATION: SECTION 5, T11N, R3E SEVEN BAR RANCH	DRAWN: T R J	SCALE: 1" = 40'	FILE NO. SP-11-01-2017
	CHECKED: T D J	2 NOV 2017	SHEET 2 OF 2
	DRAWING NO. SP110117.DWG		