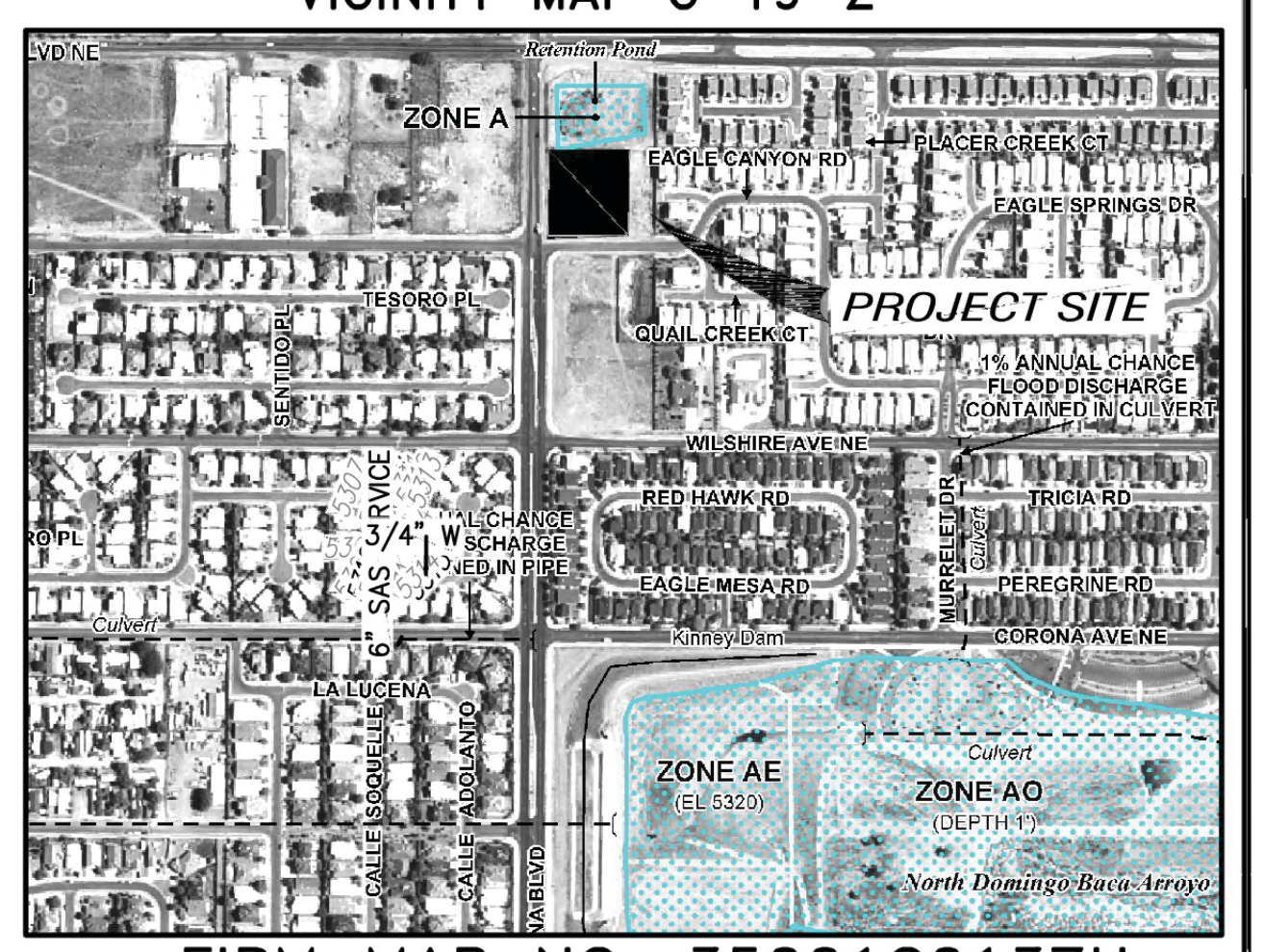
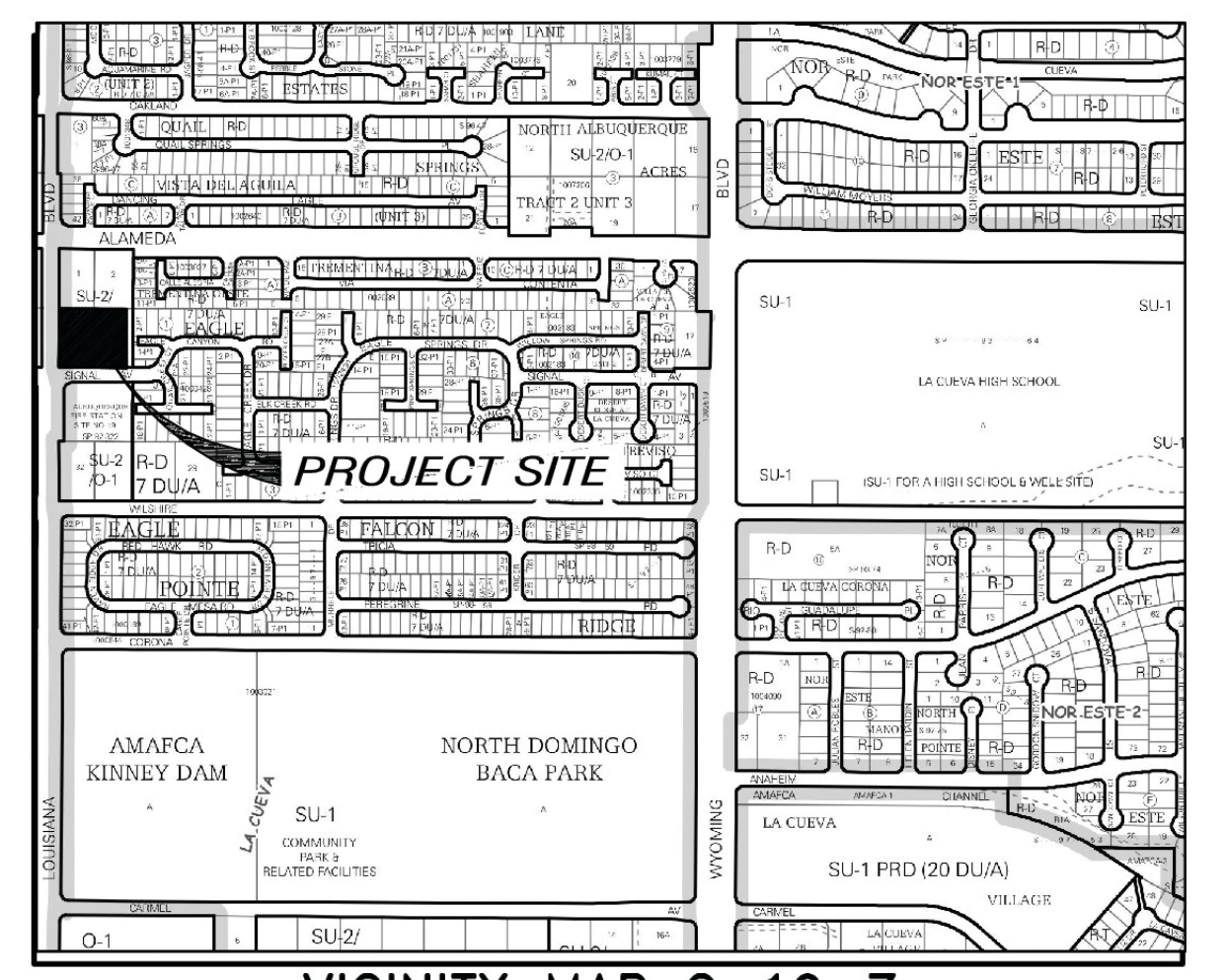
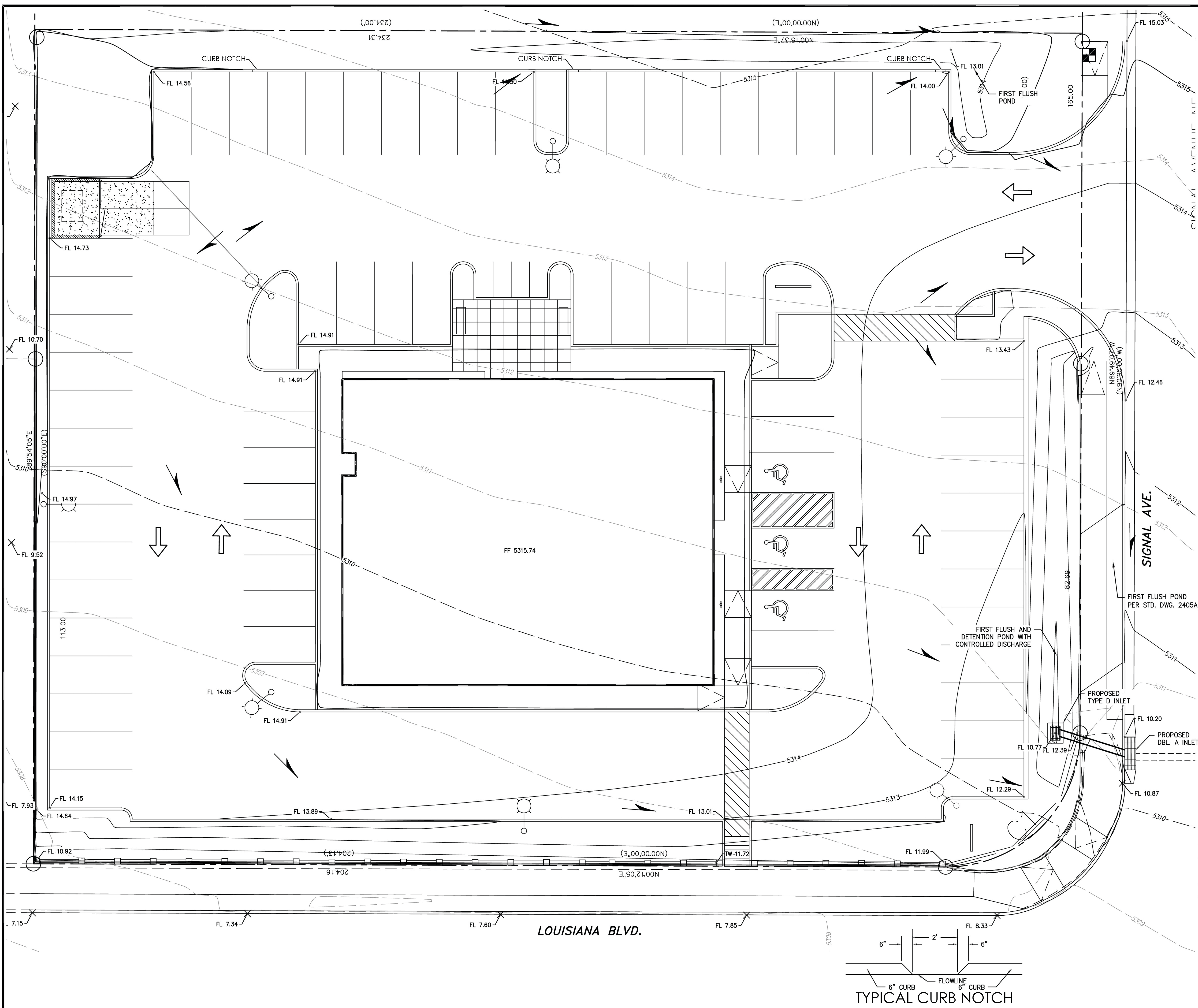


CONCEPTUAL DRAINAGE PLAN



DRAINAGE INFORMATION
LOCATION & DESCRIPTION
 THE PROPOSED SITE IS 1.00 ACRE LOCATED ON THE NORTH SIDE OF SIGNAL AVENUE EAST OF LOUISIANA BLVD. AS SEEN ON THE VICINITY MAP. THE SITE IS UNDEVELOPED. THE ADJACENT PROPERTIES TO THE EAST AND WEST ARE DEVELOPED HIGHER DENSITY WALLED COMMUNITIES. THE PROPOSED DEVELOPMENT WILL BE A COMMERCIAL DEVELOPMENT.

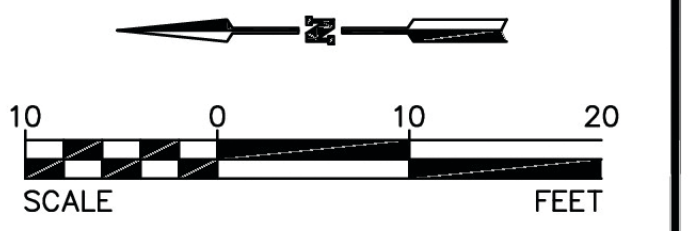
FLOODPLAIN STATUS
 THIS PROJECT, AS SHOWN ON FEMA'S FLOOD INSURANCE RATE MAP 35001C0141 G, DATED APRIL 2, 2002 IS NOT WITHIN A DESIGNATED 100-YEAR FLOODPLAIN. AN EXHIBIT WITH THE SITE SHOWN ON THE FIRM PANEL IS INCLUDED ON THIS SHEET.

EXISTING DRAINAGE
 COA PROJECT #662781 CONSTRUCTED A STORM DRAIN TO DISCHARGE TO A TEMPORARY POND ON THIS SITE TO BE REMOVED AFTER CONSTRUCTION OF DOWN STREAM FACILITIES. AN EXTENSION TO LOUISIANA WAS CONSTRUCTED FOR FUTURE CONNECTION TO THE STORM DRAIN IN LOUISIANA BLVD. THE EXISTING FLOWS AND PROPOSED FLOWS IN THE STORM DRAIN IS TAKEN FROM THE REFERENCED PROJECTS. THE STORM DRAIN COMPLETED WITH COA PROJECT #766391, COMPLETES THE DOWNSTREAM FACILITIES AND ALLOWS REMOVAL OF THE TEMPORARY POND. THIS SITE DRAINS SURFACE DRAINS TO THE EXISTING CURB AND GUTTER IN LOUISIANA BLVD.

DEVELOPED CONDITION
 THIS SITE WILL BE DEVELOPED WITH A DETENTION POND INTERCEPTING THE MAJORITY OF THE SITE RUNOFF. THE POND WILL DISCHARGE INTO TO THE STORM DRAIN IN SIGNAL AVENUE.

NOTE: ALL LANDSCAPING IS AT GRADE

- LEGEND**
- FLOW ARROW
 - SLOPE ARROW
 - PROPOSED ELEVATION
 - EXISTING ELEVATION
 - GRADE BREAK
 - EXISTING CONTOUR
 - PROPOSED EASEMENT
 - PROPOSED GRADE
 - EXISTING WALL
 - PROPOSED WALL

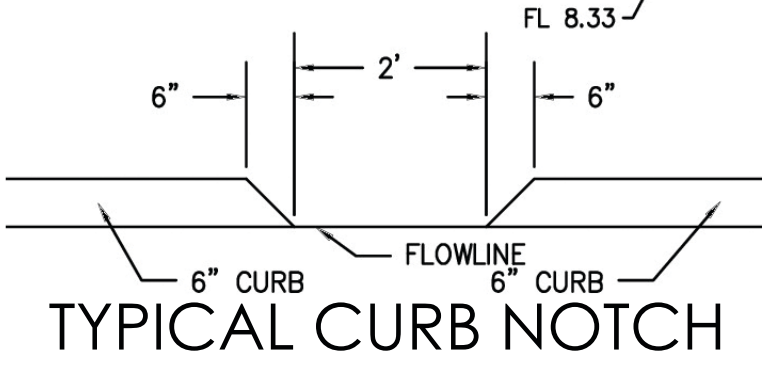


Afra Construction & Design
 2501 Yale Blvd SE Suite 102
 Albuquerque, New Mexico 87106
 Tel: 505.242.1745
 Fax: 505.242.1137

ALLERGY CLINIC
 LOUISIANA & SIGNAL NE

REV	DATE	DESCRIPTION	APVD

THE group
 THE HENSLEY ENGINEERING GROUP
 300 BRANDING IRON RD. SE RIO RANCHO, NEW MEXICO 87124
 Phone: (505) 410-1622



08/25/2016