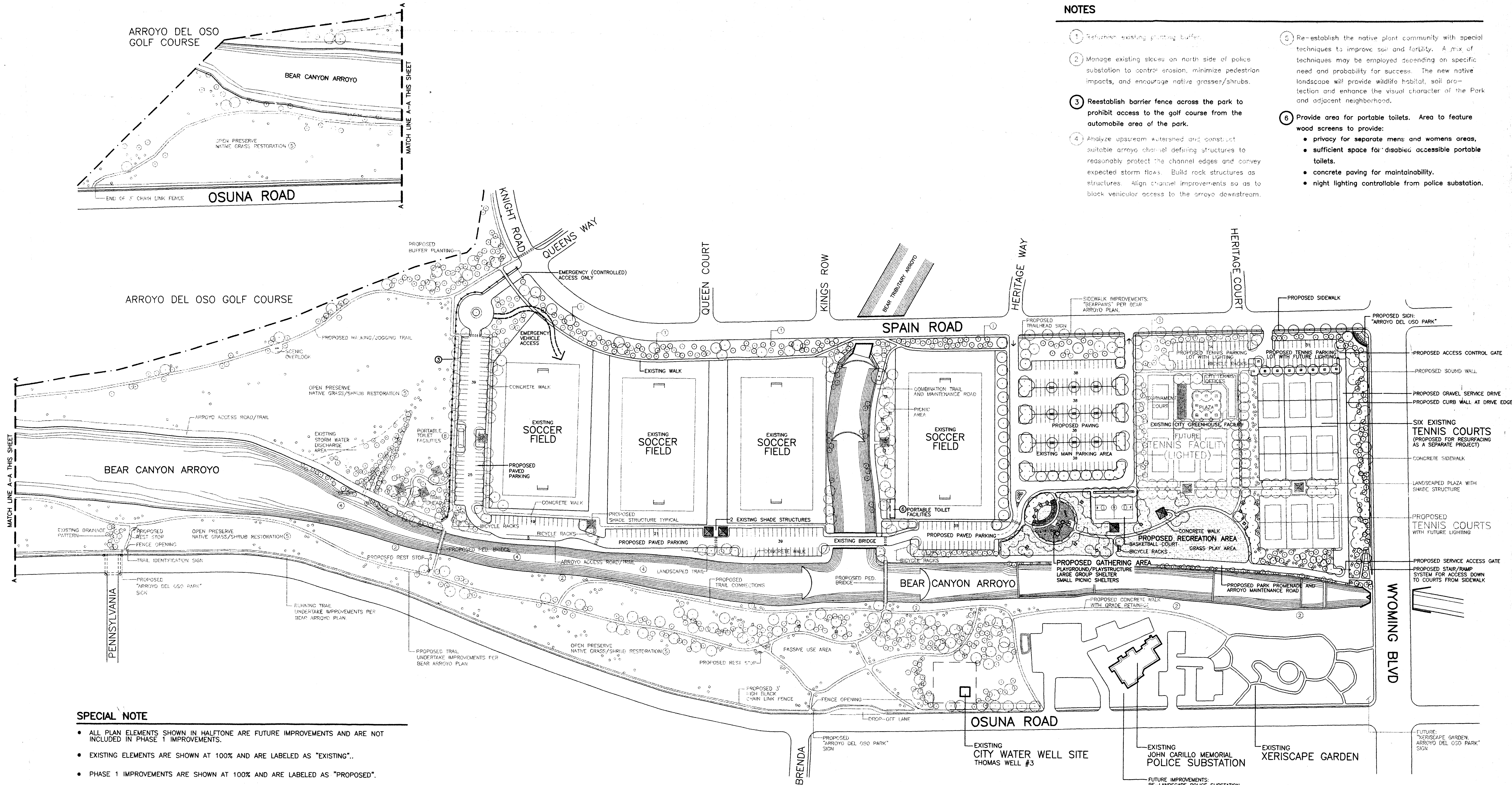


NOTES

1. Retain existing planting buffer.
2. Manage existing slopes on north side of police substation to control erosion, minimize pedestrian impacts, and encourage native grasses/shrubs.
3. Reestablish barrier fence across the park to prohibit access to the golf course from the automobile area of the park.
4. Analyze upstream watershed and construct suitable arroyo channel defining structures to reasonably protect the channel edges and convey expected storm flows. Build rock structures as structures. Align channel improvements so as to block vehicular access to the arroyo downstream.
5. Re-establish the native plant community with special techniques to improve soil and fertility. A mix of techniques may be employed depending on specific need and probability for success. The new native landscape will provide wildlife habitat, soil protection and enhance the visual character of the Park and adjacent neighborhood.
6. Provide area for portable toilets. Area to feature wood screens to provide:
 - privacy for separate mens and womens areas,
 - sufficient space for disabled accessible portable toilets.
 - concrete paving for maintainability.
 - night lighting controllable from police substation.



SPECIAL NOTE

- ALL PLAN ELEMENTS SHOWN IN HALFTONE ARE FUTURE IMPROVEMENTS AND ARE NOT INCLUDED IN PHASE 1 IMPROVEMENTS.
- EXISTING ELEMENTS ARE SHOWN AT 100% AND ARE LABELED AS "EXISTING".
- PHASE 1 IMPROVEMENTS ARE SHOWN AT 100% AND ARE LABELED AS "PROPOSED".

PARKING INVENTORY

	APPROX. EXISTING PARKING SPACES	PROPOSED PARKING SPACES	TOTAL FUTURE PARKING SPACES
TENNIS PARKING LOT	INFORMAL	34	65
MAIN PARKING LOT	209	171	171
PARKING SOUTH OF SOCCER	INFORMAL	84	84
PARKING AT WEST END	INFORMAL	64	64
TOTAL:		353	384

SCHEMATIC DESIGN PLAN - PHASE 1
ARROYO DEL OSO PARK
 CITY OF ALBUQUERQUE
 LANDSCAPE ARCHITECTURAL AND CONSTRUCTION SERVICES -- CAPITAL IMPLEMENTATION PROGRAM

EXISTING ARROYO DEL OSO PARK
DEVELOPMENT MASTER PLAN

FEBRUARY 26, 1999

NORTH

0 50' 100' 200'

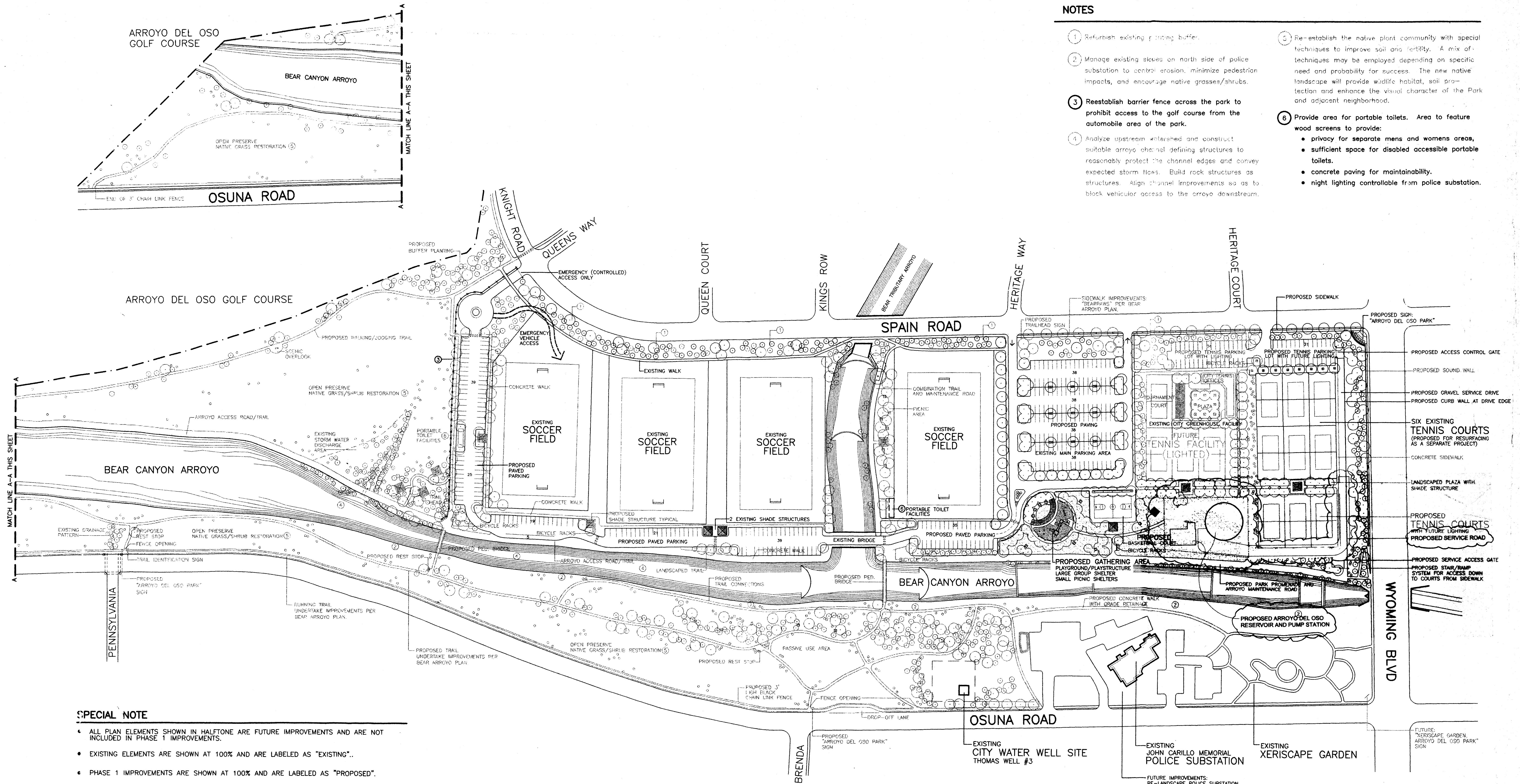
SCALE: 1" = 100'

DESIGNWORKSHOP

CITY PROJECT NO. **5762.07** Zone Map No. **F-19** SHEET **2** OF **9**
DRAWING NO.

NOTES

- 1 Refurbish existing grading buffer.
- 2 Manage existing slopes on north side of police substation to control erosion, minimize pedestrian impacts, and encourage native grasses/shrubs.
- 3 Reestablish barrier fence across the park to prohibit access to the golf course from the automobile area of the park.
- 4 Analyze upstream watershed and construct suitable arroyo channel defining structures to reasonably protect the channel edges and convey expected storm flows. Build rock structures as structures. Align channel improvements so as to block vehicular access to the arroyo downstream.
- 5 Re-establish the native plant community with special techniques to improve soil and fertility. A mix of techniques may be employed depending on specific need and probability for success. The new native landscape will provide wildlife habitat, soil protection and enhance the visual character of the Park and adjacent neighborhood.
- 6 Provide area for portable toilets. Area to feature wood screens to provide:
 - privacy for separate mens and womens areas,
 - sufficient space for disabled accessible portable toilets.
 - concrete paving for maintainability.
 - night lighting controllable from police substation.



SPECIAL NOTE

- ALL PLAN ELEMENTS SHOWN IN HALFTONE ARE FUTURE IMPROVEMENTS AND ARE NOT INCLUDED IN PHASE 1 IMPROVEMENTS.
- EXISTING ELEMENTS ARE SHOWN AT 100% AND ARE LABELED AS "EXISTING".
- PHASE 1 IMPROVEMENTS ARE SHOWN AT 100% AND ARE LABELED AS "PROPOSED".

PARKING INVENTORY


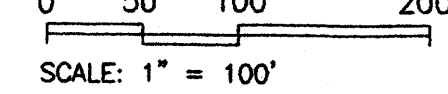

	APPROX. EXISTING PARKING SPACES	PROPOSED PARKING SPACES	TOTAL FUTURE PARKING SPACES
TENNIS PARKING LOT	INFORMAL	34	65
MAIN PARKING LOT	209	171	171
PARKING SOUTH OF SOCCER	INFORMAL	84	84
PARKING AT WEST END	INFORMAL	64	64
TOTAL:		353	384

**SCHEMATIC DESIGN PLAN - PHASE 1
ARROYO DEL OSO PARK**

CITY OF ALBUQUERQUE
LANDSCAPE ARCHITECTURAL AND CONSTRUCTION SERVICES -- CAPITAL IMPLEMENTATION PROGRAM

**AMENDED ARROYO DEL OSO PARK
DEVELOPMENT MASTER PLAN**

FEBRUARY 26, 1999

CITY PROJECT NO. 5762.07 Zone Map No. F-19 SHEET 3 OF 9
DRAWING NO.

