

LEGAL DESCRIPTION
 PROPOSED LOT 6B
 LAS LOMITAS INDUSTRIAL PARK
 ALBUQUERQUE, NEW MEXICO
 BERNALILLO COUNTY

SITE DATA

ZONING: LP
 ZONE ATLAS: D16
 SITE SIZE: 34,018 SQ. FT. (.782 AC.)
 BUILDING SIZE / % OF SITE: 9,100 SQ. FT. / 26.75%

PARKING CALCULATIONS

MANUFACTURING BUILDING
 AREA: 9,100 S.F.
 PARKING CALCULATIONS:
 1000 S.F./SPACE = 10 PARKING SPACES
 TOTAL STANDARD PARKING PROVIDED = 13 SPACES
 TOTAL H.C. PARKING REQUIRED = 1 SPACE
 TOTAL H.C. PARKING PROVIDED = 2 SPACE
 TOTAL MOTORCYCLE SPACES PROVIDED = 16 SPACES

1 BICYCLE RACK PER 20 PARKING SPACES
 (1 BICYCLE RACK - 5 SPACES)
 BIKE SPACES REQUIRED = 1 RACK

GENERAL PARKING NOTES
 TYPICAL STANDARD SPACES: 9'-0" X 20'-0"
 TYPICAL COMPACT CAR SPACES: 8'-0" X 15'-0"
 TYPICAL HANDICAP SPACES: 8'-0" X 20'-0"
 WITH A 8' WIDE ACCESS AISLE
 ALL SPACES ARE STANDARD SIZE UNLESS NOTED OTHERWISE

LANDSCAPE CALCULATIONS

LOT AREA: 34,018 S.F.
 BUILDING AREA: 9,100 S.F.
 NET LOT AREA: 24,918 S.F.
 LANDSCAPE AREA REQUIRED (15%): 3,738 S.F.
 GROUND COVER REQUIRED: 2,804 S.F.
 (75% OF LANDSCAPE)
 STREET TREES: 25' O.C.
 LANDSCAPE AREA PROVIDED (15%): 2,825 S.F.

LEGAL DESCRIPTION
 PROPOSED LOT 6A
 LAS LOMITAS INDUSTRIAL PARK
 ALBUQUERQUE, NEW MEXICO
 BERNALILLO COUNTY

SITE DATA

ZONING: LP
 ZONE ATLAS: D16
 SITE SIZE: 45,509 SQ. FT. (1.045 AC.)
 BUILDING SIZE / % OF SITE: 13,000 SQ. FT. / 28.57%

PARKING CALCULATIONS

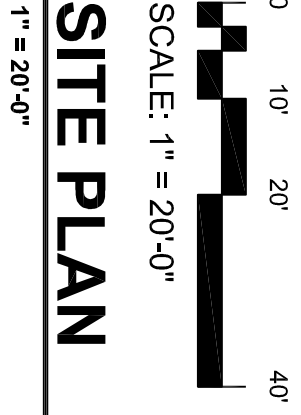
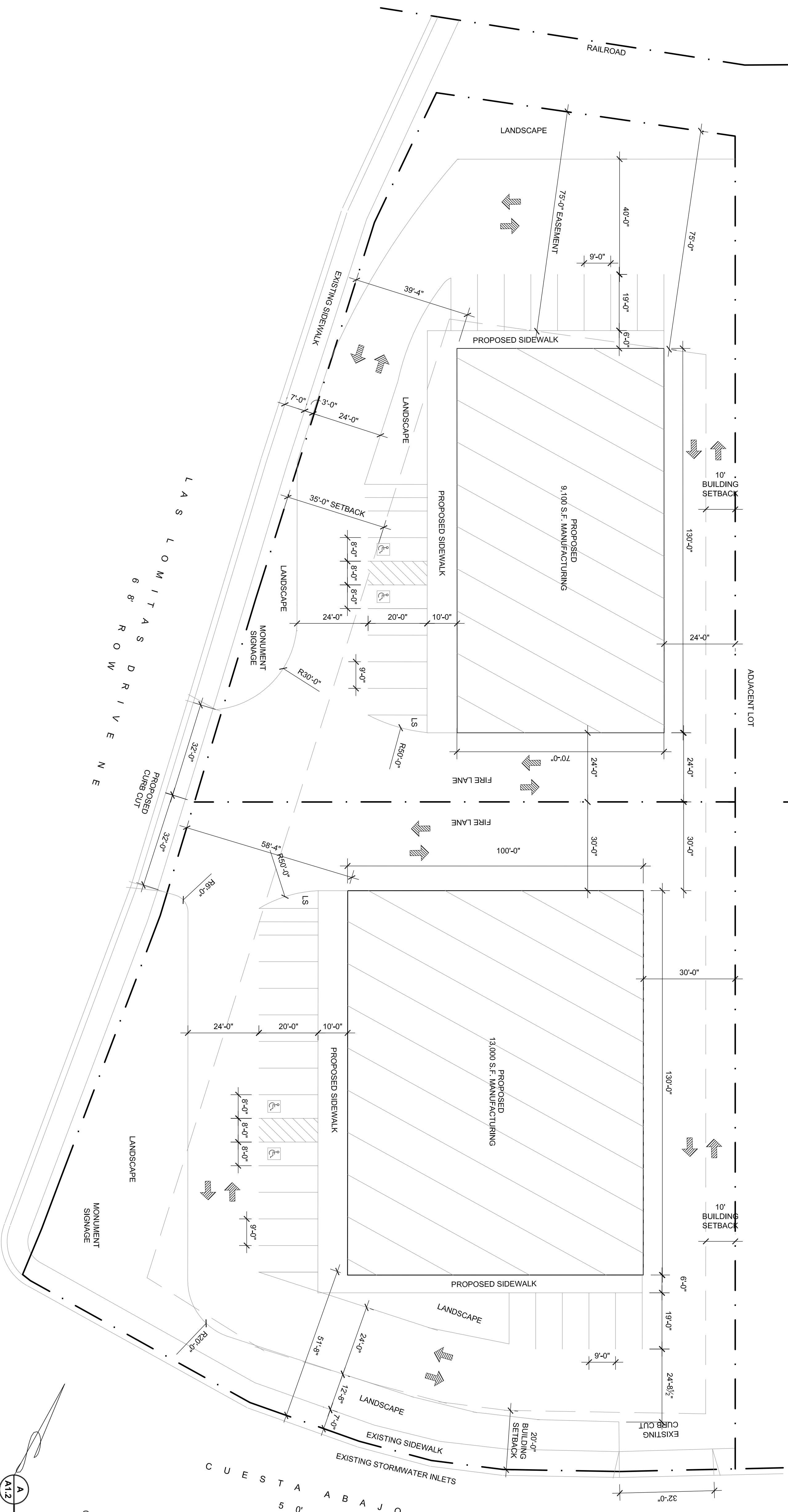
MANUFACTURING BUILDING
 AREA: 13,000 S.F.
 PARKING CALCULATIONS:
 1000 S.F./SPACE = 13 PARKING SPACES
 TOTAL STANDARD PARKING PROVIDED = 15 SPACES
 TOTAL H.C. PARKING REQUIRED = 2 SPACE
 TOTAL H.C. PARKING PROVIDED = 2 SPACE
 TOTAL MOTORCYCLE SPACES PROVIDED = 19 SPACES

1 BICYCLE RACK PER 20 PARKING SPACES
 (1 BICYCLE RACK - 5 SPACES)
 BIKE SPACES REQUIRED = 1 RACK

GENERAL PARKING NOTES
 TYPICAL STANDARD SPACES: 9'-0" X 20'-0"
 TYPICAL COMPACT CAR SPACES: 8'-0" X 15'-0"
 TYPICAL HANDICAP SPACES: 8'-0" X 20'-0"
 WITH A 8' WIDE ACCESS AISLE
 ALL SPACES ARE STANDARD SIZE UNLESS NOTED OTHERWISE

LANDSCAPE CALCULATIONS

LOT AREA: 45,509 S.F.
 BUILDING AREA: 13,000 S.F.
 NET LOT AREA: 32,509 S.F.
 LANDSCAPE AREA REQUIRED (15%): 4,876 S.F.
 GROUND COVER REQUIRED: 3,657 S.F.
 (75% OF LANDSCAPE)
 STREET TREES: 25' O.C.
 LANDSCAPE AREA PROVIDED (20%): 6,500 S.F.



A12 SITE PLAN

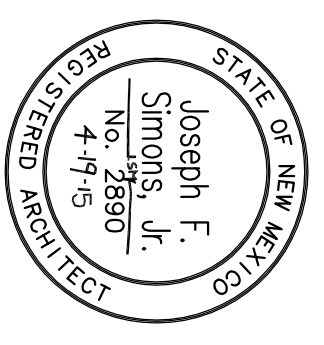
JOB NUMBER: PON-001
 DATE: 4.17.15
 REVISIONS:

PONTILUX
 1301 CUESTA ABAJO CT. NE
 Albuquerque, NM
 Bernalillo County



joseph f. simons jr., aia
 nm lic 002890
 p.o. box 67408
 abq, n.m., 87193-7408
 ph.505.480.4796
 jfs@simonsarchitecture.com

SIMONS ARCHITECTURE IS NOT RESPONSIBLE FOR ANY WORK DONE BY CONTRACTORS, SUB-CONTRACTORS OR SUPPLIERS. ALL MEASUREMENTS AND DIMENSIONS TO BE CHECKED & CORRECTED BY OWNER & CONTRACTOR.
 SIMONS ARCHITECTURE, ALL RIGHTS RESERVED.
 COPYRIGHT WARNING: THESE DESIGNS PREPARED BY SIMONS ARCHITECTURE ARE THE PROPERTY OF SIMONS ARCHITECTURE. REPRODUCTION IN ANY FORM WITHOUT WRITTEN CONSENT IS EXPRESSLY PROHIBITED. FEDERAL COPYRIGHT PROTECTION EXTENDS TO ORIGINAL AND MODIFIED DERIVATIVE PLANS, SPECIFICATIONS, SCHEDULES, AND OTHER DOCUMENTS. INFRINGEMENTS, AND PROVIDES FOR SPECIFIC STATUTORY DAMAGES, BOTH CIVIL AND CRIMINAL.
 COPYRIGHT OF ANY EXISTING BUILDINGS TO REMAIN WITH THE AUTHOR.



A1.2