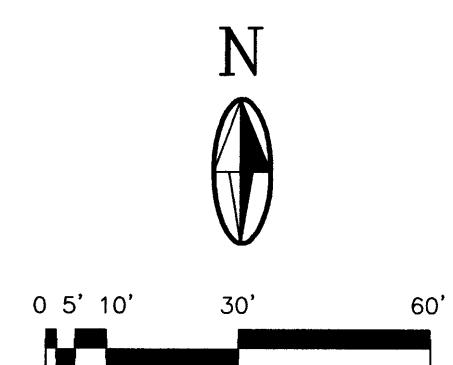
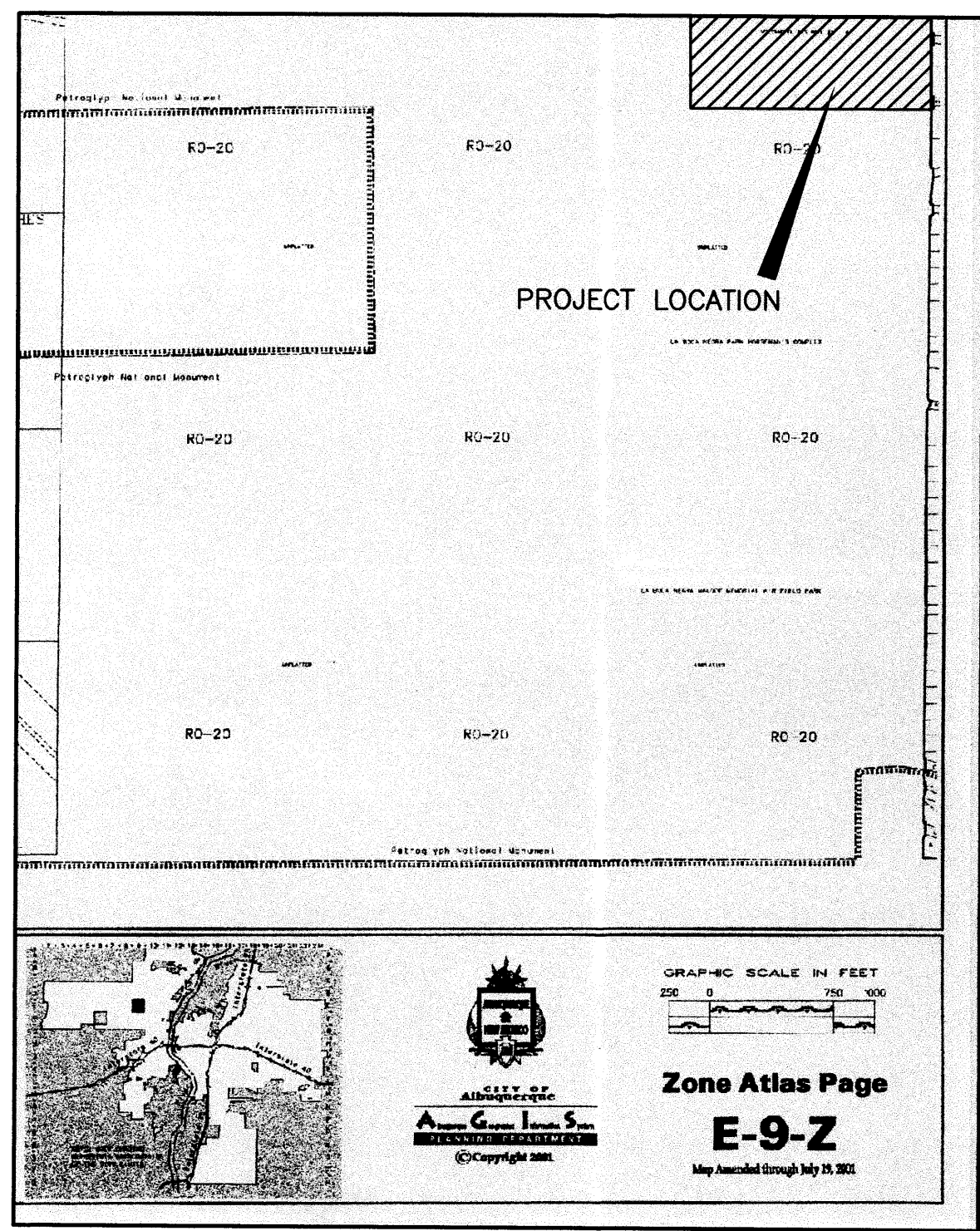
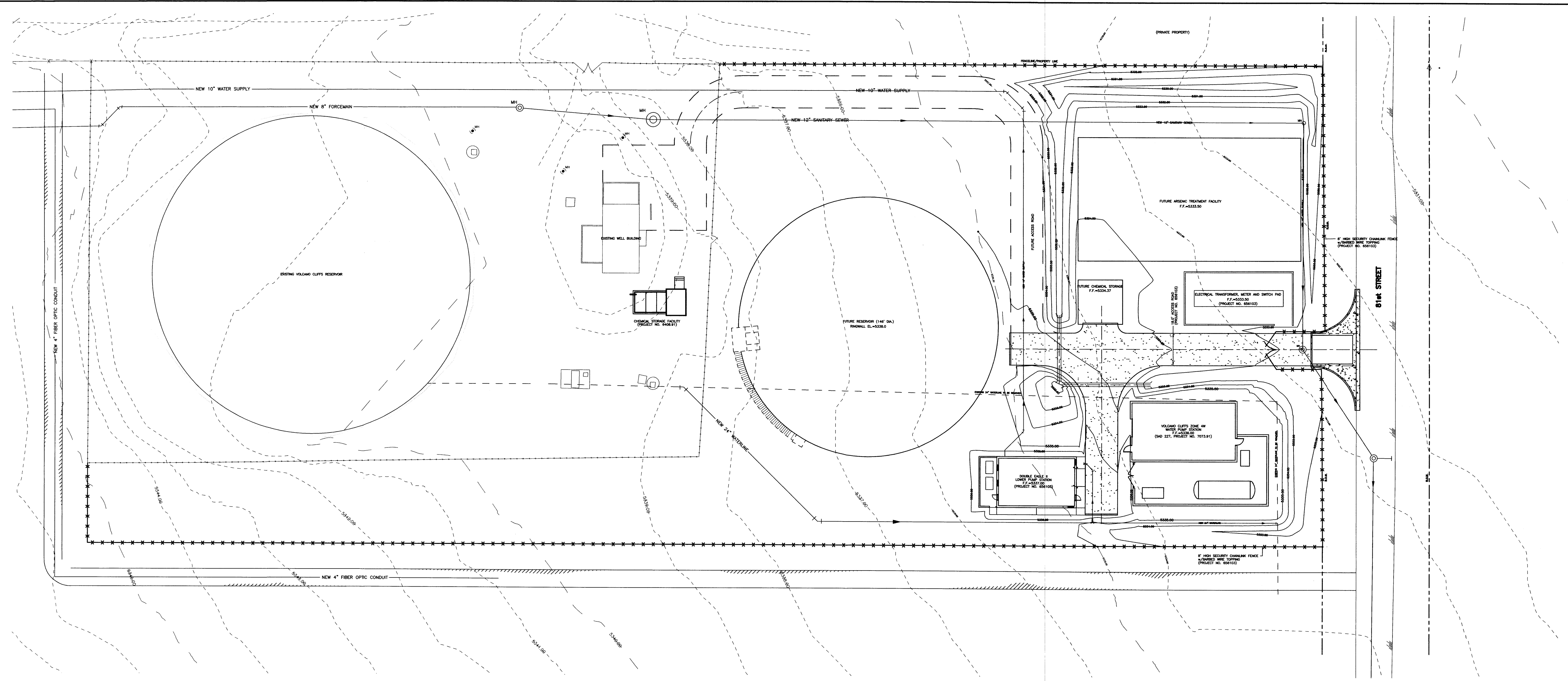


CAB-S1902 1=1 (1=2004/03/03)



- LEGEND**
- - - - -5927.00- - - - - EXISTING CONTOUR (1' CONTOUR ELEVATION)
 - 5927.00 ————— NEW CONTOUR
 - ***** NEW CHAINLINK FENCE
 - ACCESS ROAD GRAVEL SURFACE

ENVIRONMENTAL HEALTH APPROVAL

AUTHORIZED SIGNATURE

2701 MILES RD SE
 ALBUQUERQUE, NM 87106
 TEL: 505.242.5100
 FAX: 505.242.4675

MOLZEN-CORBIN & Associates
 ENGINEERS/ARCHITECTS/PLANNERS

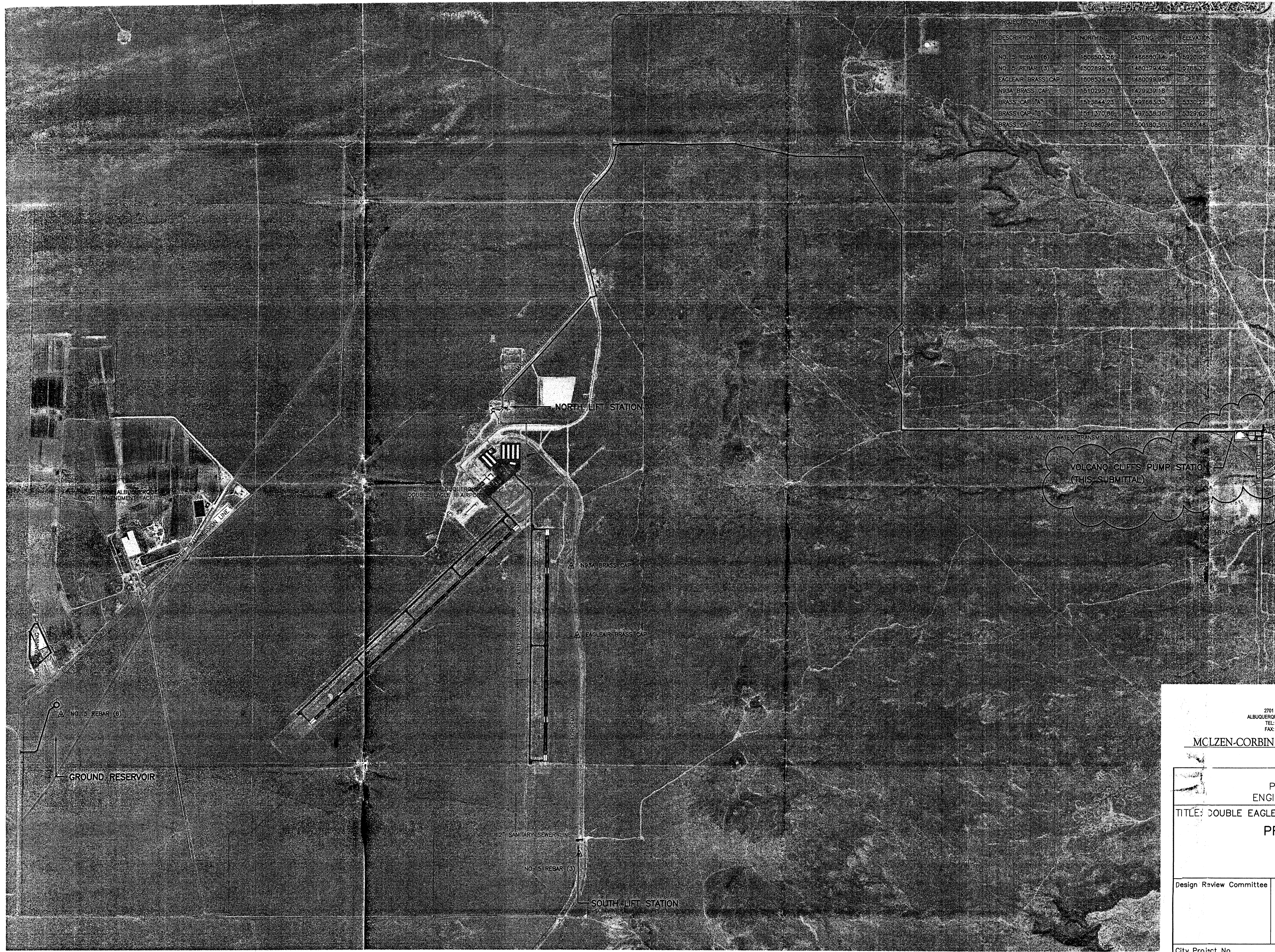
CITY OF ALBUQUERQUE
 PUBLIC WORKS DEPARTMENT
 ENGINEERING DEVELOPMENT GROUP

TITLE: DOUBLE EAGLE II AIRPORT INFRASTRUCTURE DEVELOPMENT
**UTILITY LAYOUT PLAN
 FOR PLANNING**

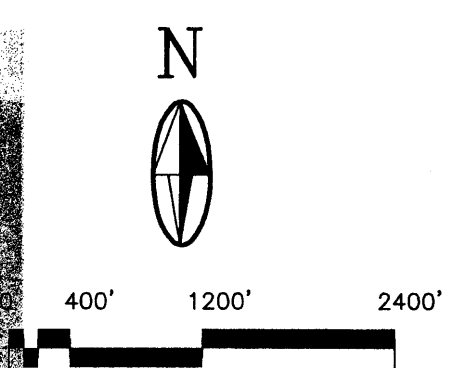
Design Review Committee	City Engineer Approval	Mo./Day/Yr.	Mo./Day/Yr.

City Project No. _____ Zone Map No. _____ Sheet 1 Of 1

ENGINEER'S SEAL		SURVEY INFORMATION		AS BUILT INFORMATION	
		NO.	BY	DATE	DATE
		REVISIONS		DATE	DATE
DESIGNED BY	REVISIONS	DATE	DATE	DATE	DATE
DRAWN BY	DESIGN	DATE	DATE	DATE	DATE
CHECKED BY		DATE	DATE	DATE	DATE



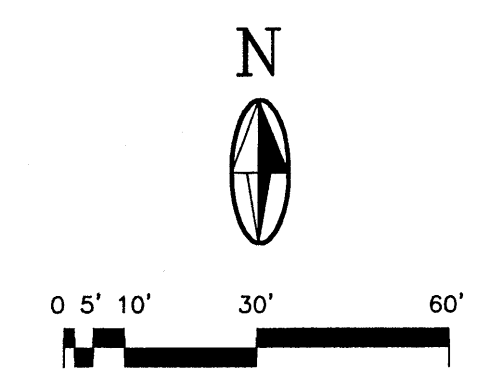
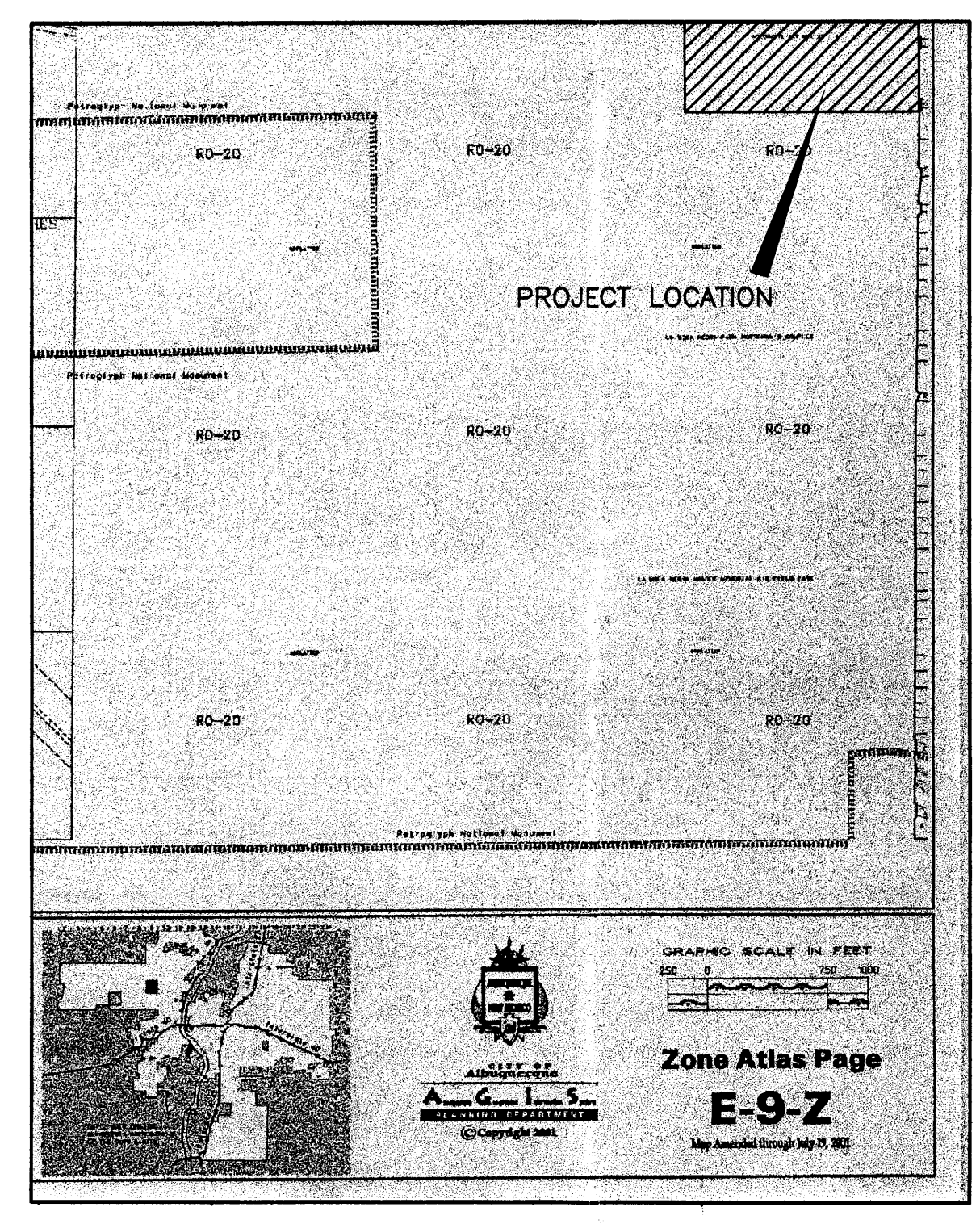
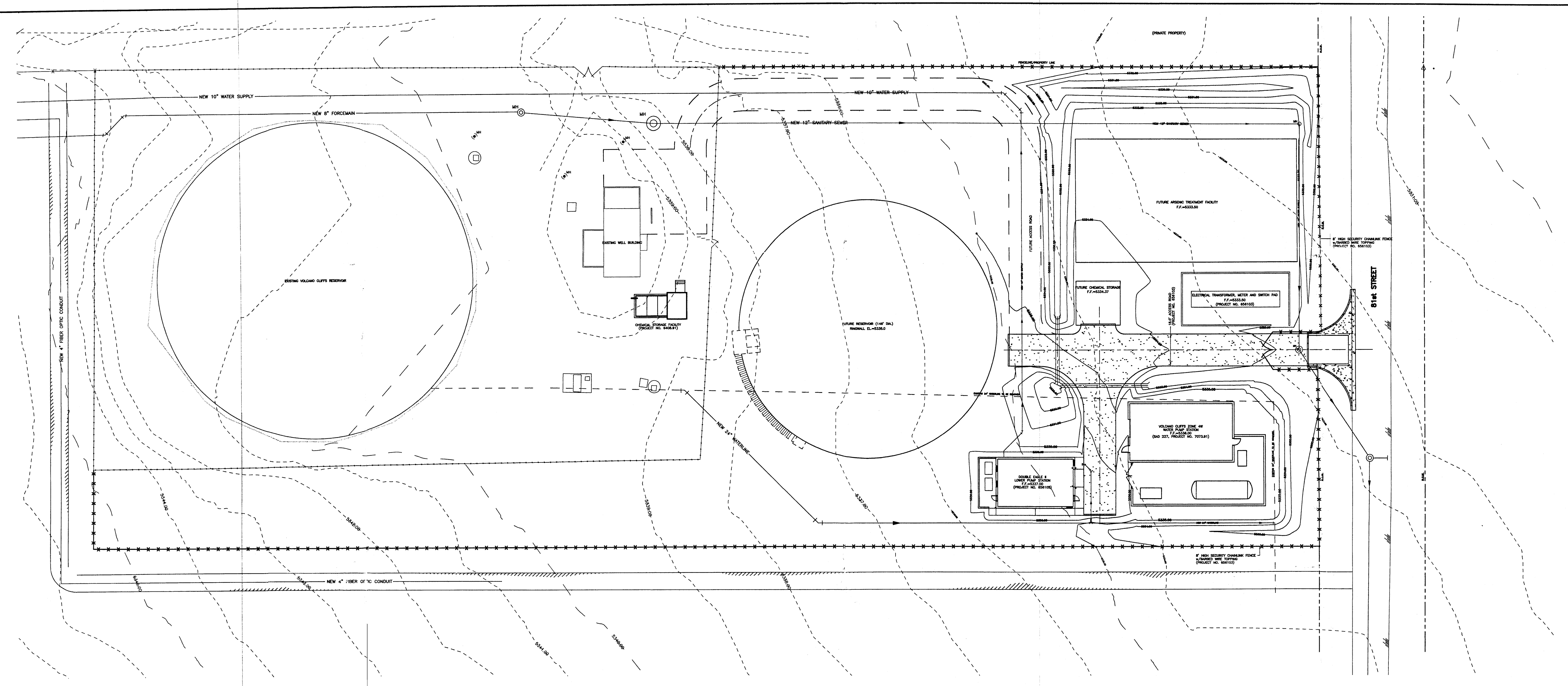
PROJECT CONTROL			
DESCRIPTION	NORTHING	EASTING	ELEVATION
NO. 5 REBAR (O)	1508502.26	1486880.17	5229.90
NO. 5 REBAR (Y)	1502899.38	1480176.42	5788.32
EAGLEAIR BRASS CAP	1508539.46	1480099.96	5231.87
NO. 3A BRASS CAP	1510295.71	1479939.18	5231.87
BRASS CAP "A"	1513944.25	1497663.50	5330.22
BRASS CAP "B"	1511370.86	1497558.56	5329.62
BRASS CAP "C"	1510887.96	1500180.50	5785.48



AS BUILT INFORMATION		CONTRACTOR	
WORKED BY	DATE	INSPECTED BY	DATE
ACCEPTANCE BY	DATE	VERIFICATION BY	DATE
DRAWINGS BY	DATE	RECORDED BY	DATE
MICRO-FILM INFORMATION		NO.	
SURVEY INFORMATION		FIELD NOTES	
NO.	BY	DATE	
ENGINEER'S SEAL		REVISIONS	
		NO.	DATE
		DESIGNED BY	DATE
		DRAWN BY	DATE
REMARKS		BY	DATE
DESIGN		DKS	10/18/03
CHECKED BY		JMP	10/24/03
<p>2701 MILES RD SE ALBUQUERQUE, NM 87106 TEL: 505.242-6700 FAX: 505.242-0673</p> <p>MCLZEN-CORBIN & Associates ENGINEERS/ARCHITECTS/PLANNERS</p> <p>CITY OF ALBUQUERQUE PUBLIC WORKS DEPARTMENT ENGINEERING DEVELOPMENT GROUP</p> <p>TITLE: DOUBLE EAGLE II AIRPORT INFRASTRUCTURE DEVELOPMENT PROJECT LOCATION MAP</p>			
Design Review Committee	City Engineer Approval	Last Design Update	
		Mo./Day/Yr.	Mo./Day/Yr.
City Project No.	Zone Map No.	Sheet	Of
		1	5

1002197

CAB-SF02 1=1 (1=280004/03)



- LEGEND**
- - - - -5927.00- EXISTING CONTOUR (1' CONTOUR ELEVATION)
 - 5927.00— NEW CONTOUR
 - ***** NEW CHAINLINK FENCE
 - □ □ □ ACCESS ROAD GRAVEL SURFACE

ENVIRONMENTAL HEALTH APPROVAL

Michael Helton 9-29-03
 AUTHORIZED SIGNATURE *Un Manned Facility*

2701 MILES RD SE
 ALBUQUERQUE, NM 87106
 TEL: 505.242-5700
 FAX: 505.242-0673

MOLZEN-CORBIN & Associates
 ENGINEERS/ARCHITECTS/PLANNERS

CITY OF ALBUQUERQUE
 PUBLIC WORKS DEPARTMENT
 ENGINEERING DEVELOPMENT GROUP

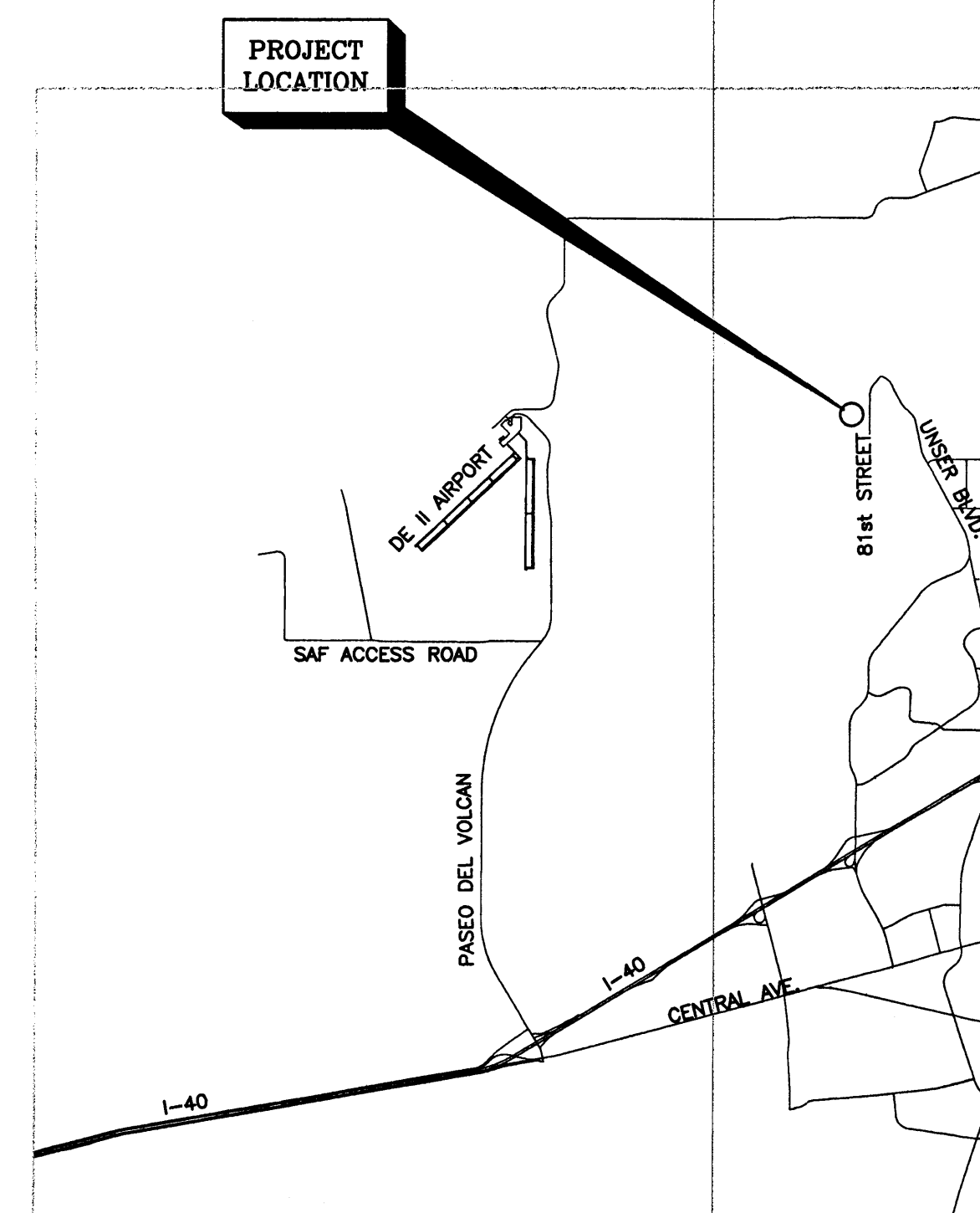
**TITLE: DOUBLE EAGLE II AIRPORT INFRASTRUCTURE DEVELOPMENT
 SITE DEVELOPMENT PLAN**

Design Review Committee	City Engineer Approval	Mo./Day/Yr.	Mo./Day/Yr.
City Project No.	Zone Map No.	Sheet	Of
		2	5

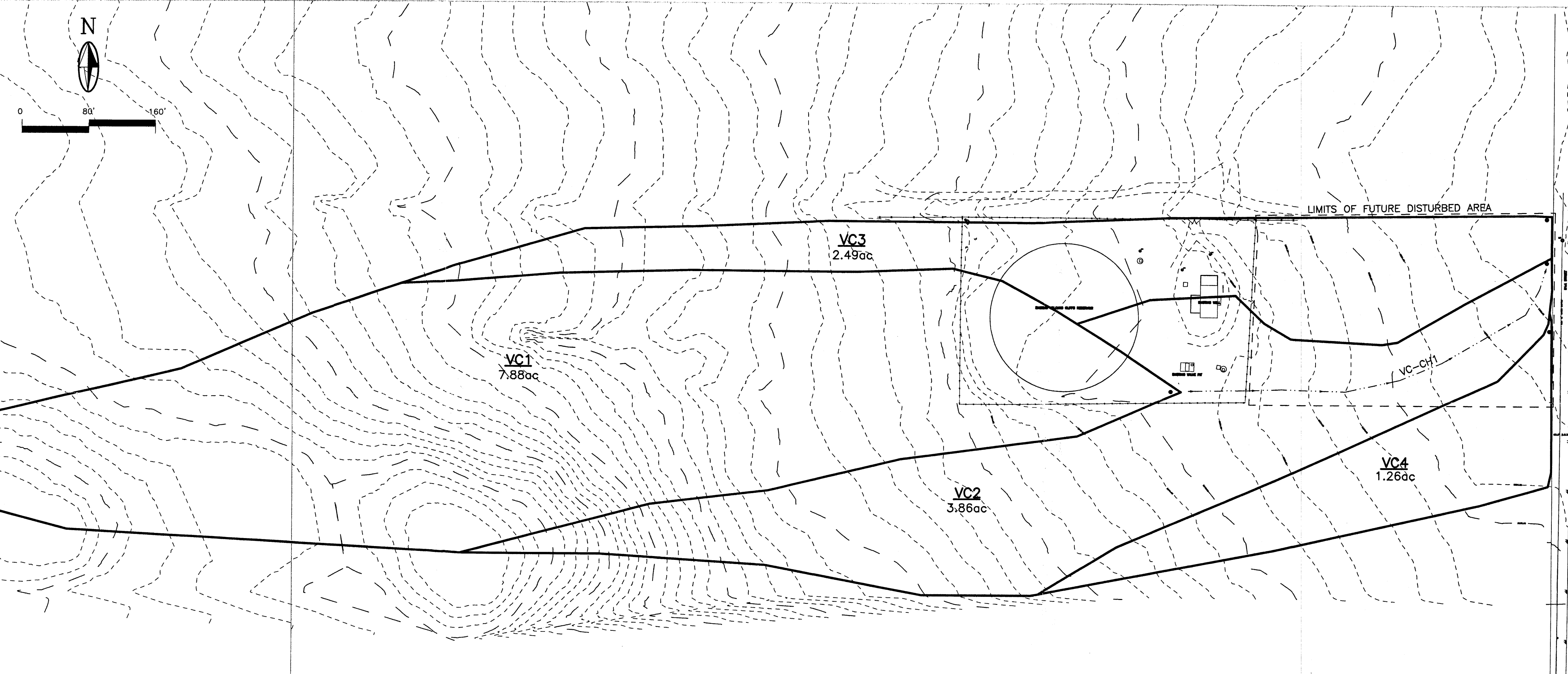
ENGINEER'S SEAL		SURVEY INFORMATION		BENCH MARKS		AS BUILT INFORMATION	
	NO.	NO.	NO.	NO.	NO.	NO.	NO.
	DATE	BY	DATE	DATE	DATE	DATE	DATE
DESIGNED BY	REMARKS	FIELD NOTES	FIELD NOTES	FIELD NOTES	FIELD NOTES	FIELD NOTES	FIELD NOTES
DRAWN BY	REVISIONS	NO.	BY	DATE	DATE	DATE	DATE
CHECKED BY	DESIGN						

LEGEND

- 5927.00--- EXISTING CONTOUR (1' CONTOUR INTERVAL)
- - - - - LIMITS OF FUTURE DISTURBED AREA
- EXISTING SUB-BASIN BOUNDARY
- > DRAINAGE CHANNEL FLOW DIRECTION



VICINITY MAP



SITE CHARACTERISTICS

- * 100 YEAR RAINFALL TABLE
100yr - 1hr = 1.87in
100yr - 6hr = 2.20in
100yr - 24hr = 2.66in
- * SUB-BASIN VC1
AREA = 7.88ac
LAND TREATMENT:
A = 95.0%
B = 0.0%
C = 5.0%
D = 0.0%
REACH = 1652.0ft
HIGH EL. = 5379.00ft
LOW EL. = 5340.00ft
- * SUB-BASIN VC2
AREA = 3.86ac
LAND TREATMENT:
A = 90.0%
B = 0.0%
C = 10.0%
D = 0.0%
REACH = 1365.0ft
HIGH EL. = 5374.00ft
LOW EL. = 5332.00ft
- * SUB-BASIN VC3
AREA = 2.49ac
LAND TREATMENT:
A = 95.0%
B = 0.0%
C = 5.0%
D = 0.0%
REACH = 1355.0ft
HIGH EL. = 5361.00ft
LOW EL. = 5332.00ft
- * SUB-BASIN VC4
AREA = 1.26ac
LAND TREATMENT:
A = 100.0%
B = 0.0%
C = 0.0%
D = 0.0%
REACH = 719.0ft
HIGH EL. = 5346.00ft
LOW EL. = 5332.00ft

CALCULATIONS

- * SUB-BASIN VC1
Q(100yr-6yr) = 5.49cfs
Q(100yr-24yr) = 5.46cfs
RUNOFF Vol.(100yr-6hr) = 0.301ac-ft
RUNOFF Vol.(100yr-24hr) = 0.300ac-ft
TP(100yr-6hr) = 1.665hr
TP(100yr-24hr) = 1.650hr
- * SUB-BASIN VC2
Q(100yr-6yr) = 3.70cfs
Q(100yr-24yr) = 3.68cfs
RUNOFF Vol.(100yr-6hr) = 0.153ac-ft
RUNOFF Vol.(100yr-24hr) = 0.153ac-ft
TP(100yr-6hr) = 1.598hr
TP(100yr-24hr) = 1.600hr
- * SUB-BASIN VC3
Q(100yr-6yr) = 1.94cfs
Q(100yr-24yr) = 1.93cfs
RUNOFF Vol.(100yr-6hr) = 0.095ac-ft
RUNOFF Vol.(100yr-24hr) = 0.095ac-ft
TP(100yr-6hr) = 1.632hr
TP(100yr-24hr) = 1.650hr
- * SUB-BASIN VC4
Q(100yr-6yr) = 1.60cfs
Q(100yr-24yr) = 1.56cfs
RUNOFF Vol.(100yr-6hr) = 0.047ac-ft
RUNOFF Vol.(100yr-24hr) = 0.047ac-ft
TP(100yr-6hr) = 1.532hr
TP(100yr-24hr) = 1.550hr
- * SUB-BASIN VC2 + CHANNEL VC-CH1
Q(100yr-6yr) = 7.03cfs
Q(100yr-24yr) = 6.74cfs
RUNOFF Vol.(100yr-6hr) = 0.453ac-ft
RUNOFF Vol.(100yr-24hr) = 0.451ac-ft
TP(100yr-6hr) = 1.865hr
TP(100yr-24hr) = 1.900hr

NOTES

AS SHOWN ON THE VICINITY MAP, THE SITE IS LOCATED EAST OF THE DOUBLE EAGLE II AIRPORT AND CAN BE ACCESSED BY CONTINUING NORTH ON UNSER BLVD. THROUGH THE PETROGLYPH NATIONAL MONUMENT TO 81st STREET. THERE IS CURRENTLY AN EXISTING RESERVOIR DIRECTLY WEST OF THE FUTURE UNDEVELOPED SITE. ACCORDING TO THE GEOTECHNICAL ENGINEERING SERVICES REPORT, JOB NO. 1-20721 "WATER SUPPLY AND TRANSMISSION LINE WASTEWATER COLLECTION AND TRANSMISSION LINE" THE SOIL IN THE AREA IS BEST DESCRIBED AS SILTY SAND.

AS SHOWN BY PANEL 111 OF 825 OF THE NATIONAL FLOOD INSURANCE PROGRAM FLOOD INSURANCE RATE MAPS PUBLISHED BY F.E.M.A. FOR THE CITY OF ALBUQUERQUE, NEW MEXICO DATED SEPTEMBER 20, 1996, THIS SITE DOES NOT LIE WITHIN A DESIGNATED FLOOD HAZARD ZONE.

THE GRADING PLAN SHOWS: 1) EXISTING GRADES INDICATED BY CONTOURS AT 1.0' INTERVAL AS SHOWN FROM THE TOPOGRAPHIC SURVEY PROVIDED BY MOLZEN-CORBIN & ASSOCIATES AND THE ALBUQUERQUE METROPOLITAN ARROYO FLOOD CONTROL AUTHORITY, 2) PROPOSED GRADES INDICATED BY SPOT ELEVATIONS AND CONTOURS AT 1.0' INTERVALS, 3) THE LIMIT AND CHARACTER OF OF THE EXISTING IMPROVEMENTS, 4) THE LIMIT AND CHARACTER OF PROPOSED IMPROVEMENTS, AND 5) CONTINUITY BETWEEN EXISTING AND PROPOSED GRADES.

THE PROPOSED DEVELOPMENT CONSISTS OF THE CONSTRUCTION OF A 117' DIAMETER STEEL GROUND RESERVOIR, PUMP STATION, AND A POSSIBLE ARSENIC TREATMENT FACILITY. AN ACCESS ROAD WITH A GRAVEL SURFACE WILL ALSO BE CONSTRUCTED AS PART OF THE NEW DEVELOPMENT. CURRENTLY THE SITE IS FAIRLY FLAT WITH NATURAL VEGETATION AND GENERALLY DRAINS FROM WEST TO EAST TOWARD THE PETROGLYPH NATIONAL MONUMENT, TO THE MARIPOSA BASIN PARK.

PROPOSED DEVELOPMENT GRADING WILL CONTINUE TO ALLOW THE SITE TO DRAIN FROM WEST TO EAST. TWO CULVERTS WILL BE PLACED UNDER THE FUTURE ACCESS ROAD AT DIFFERENT LOCATIONS TO ALLOW FLOWS TO REACH A SMALL RETENTION POND LOCATED SOUTHEAST OF THE FUTURE PUMP STATION. TWO OTHER RETENTION PONDS ARE LOCATED NORTH OF THE FUTURE ARSENIC TREATMENT FACILITY, AND NORTH OF THE FUTURE RESERVOIR. THESE PONDS WILL HANDLE FLOWS GENERATED FROM THE DEVELOPED SITE ONLY. THE PONDS ARE GRADED AT 3:1 SIDE SLOPES AND HAVE A TOTAL CAPACITY OF 0.51ac-ft. EXISTING FLOWS FROM SUB-BASIN VC1 AND VC2 WILL BE GRADED TO DRAIN IN A SMALL SWALE TO THE SOUTHEAST CORNER OF THE SITE, AWAY FROM THE PROPOSED DEVELOPMENT. EXISTING FLOWS FROM SUB-BASIN VC3 WILL ALSO DRAIN AWAY FROM THE PROPOSED DEVELOPMENT TO THE NORTHEAST CORNER OF THE SITE.

AS SHOWN BY CALCULATIONS CONTAINED HEREIN, THE MAXIMUM PONDING VOLUME FOR THE 100yr-24hr STORM EVENT ARE AS FOLLOWS: POND 1) 0.198ac-ft, POND 2) 0.088ac-ft, AND POND 3) 0.134ac-ft, NOT INCLUDING ANY INFILTRATION.

THE CALCULATIONS SHOWN FOR BOTH EXISTING AND FUTURE CONDITIONS ANALYZE BOTH THE 100yr-24hr AND THE 100yr-6hr STORM EVENT. THE PROCEDURE FOR 40-ACRE AND SMALLER BASINS, AS SET FORTH IN THE REVISION OF SECTION 22.2, HYDROLOGY OF THE DEVELOPMENT PROCESS MANUAL, VOLUME 2, DESIGN CRITERIA, DATED JANUARY, 1993, IN CONJUNCTION WITH THE ARID-LANDS HYDROLOGIC MODEL "AHYMO-97" COMPUTER PROGRAM, HAS BEEN USED TO QUANTIFY THE PEAK RATE OF DISCHARGE AND THE VOLUME OF RUNOFF GENERATED BY THIS DEVELOPMENT.

2701 MILES RD SE
ALBUQUERQUE, NM 87106
TEL: 505.242-5700
FAX: 505.242-0673

MOLZEN-CORBIN & Associates
ENGINEERS/ARCHITECTS/PLANNERS

CITY OF ALBUQUERQUE
PUBLIC WORKS DEPARTMENT
ENGINEERING DEVELOPMENT GROUP

TITLE: DOUBLE EAGLE II AIRPORT INFRASTRUCTURE DEVELOPMENT
**VOLCANO CLIFFS PUMP STATION
GRADING AND DRAINAGE PLAN
EXISTING CONDITIONS**

Design Review Committee	City Engineer Approval	Last Design Update	Mo./Day/Yr.	Mo./Day/Yr.
City Project No.	Zone Map No.	Sheet	4	Of 5

AS BUILT INFORMATION		BENCH MARKS		SURVEY INFORMATION		FIELD NOTES		ENGINEER'S SEAL	
CONTRACTOR	DATE			NO.	BY	DATE		SEAL	DATE
WORK	DATE								9/24/03
INSPECTOR	DATE								
ACCEPTANCE BY	DATE								
REVISION BY	DATE								
DRAWINGS	DATE								
CORRECTED BY	DATE								
MICRO-FILM INFORMATION									
RECORDED BY	DATE								

GENERAL SHEET NOTES

1. REFERENCE ELEVATIONS ARE BASED ON A TOP OF SLAB ELEVATION OF 100'-0". SEE DRAWING ON C-01 FOR DATUM.

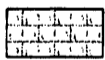

REFERENCE KEYNOTES

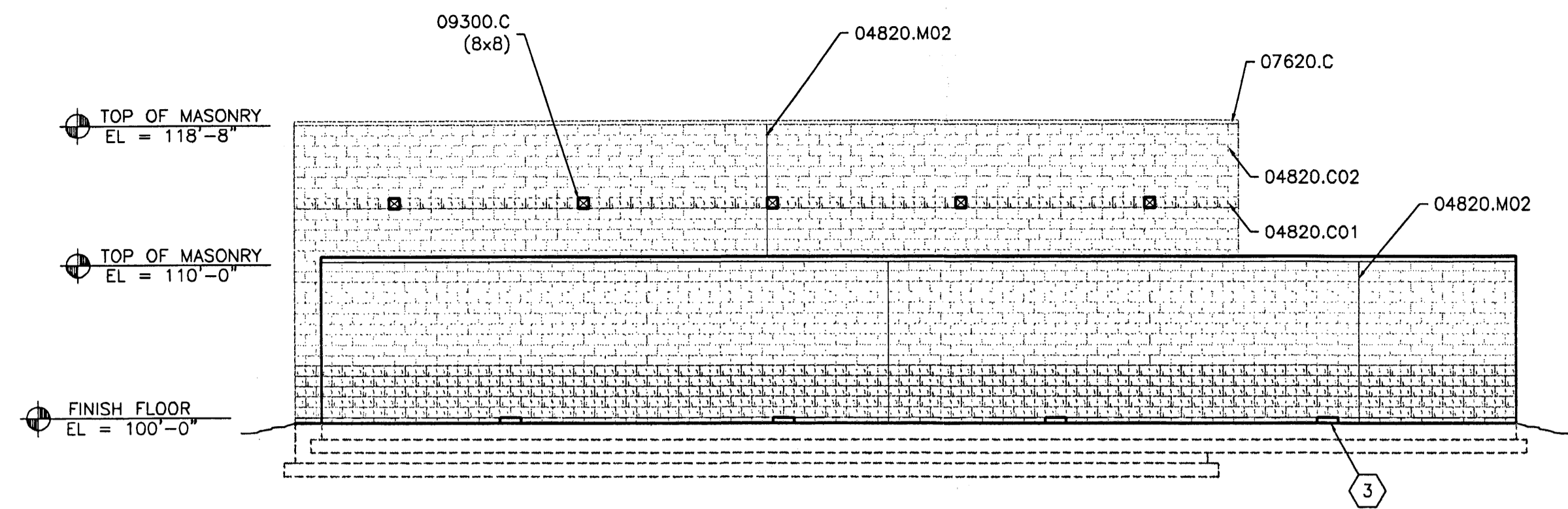
- DIVISION 3 - CONCRETE**
- 03200.R REINFORCING STEEL
 - 03300.C CAST-IN-PLACE CONCRETE
- DIVISION 4 - MASONRY**
- 04820.C CONCRETE MASONRY UNITS
 - 04820.C01 CONCRETE MASONRY UNITS TYPE "A"
 - 04820.C02 CONCRETE MASONRY UNITS TYPE "B"
 - 04820.G GROUT
 - 04820.M02 MASONRY CONTROL JOINT
- DIVISION 5 - METALS**
- 05500.B02 BOLLARD
 - 05500.G GATE
 - 05500.H01 HASP
 - 05500.S01 STEEL CHANNEL
 - 05500.S04 STEEL TUBE
- DIVISION 7 - THERMAL & MOISTURE PROTECTION**
- 07620.C COPING
 - 07620.D DOWNSPOUT
 - 07620.L LEADERHEAD
 - 07620.S04 SPLASH PAD
- DIVISION 8 - DOORS & WINDOWS**
- 08110.S STEEL DOOR
 - 08110.S01 STEEL FRAME
 - 08331.E EXTERIOR COILING DOOR
- DIVISION 9 - FINISHES**
- 09300.C CERAMIC MOSAIC TILE

SHEET KEYNOTES

1. 1" INNER DIAMETER x 4" DEEP STEEL SLEEVED HOLE IN PAVING FOR CANE BOLT.
2. CONCRETE PAVING - SEE PLANS FOR THICKNESS AND REINFORCING.
3. BLOCK OPENING AT THIS LOCATION TO ALLOW FOR DRAINAGE. LOCATE BOTTOM OF OPENING AT ADJACENT GRADE LEVEL.
4. TURNBUCKLE ADJUSTABLE, DIAGONAL GATE BRACE.
5. HVAC WALL PENETRATION - SEE MECHANICAL.
6. RAILING INFILL PANEL, 3/4" WIRE MESH, 10 GA., 1-1/2" CHANNEL.
7. THRU-WALL LOUVER - SEE MECHANICAL.
8. PROVIDE HASP AT GATE FOR PADLOCK (PER COA REQUIREMENTS.)

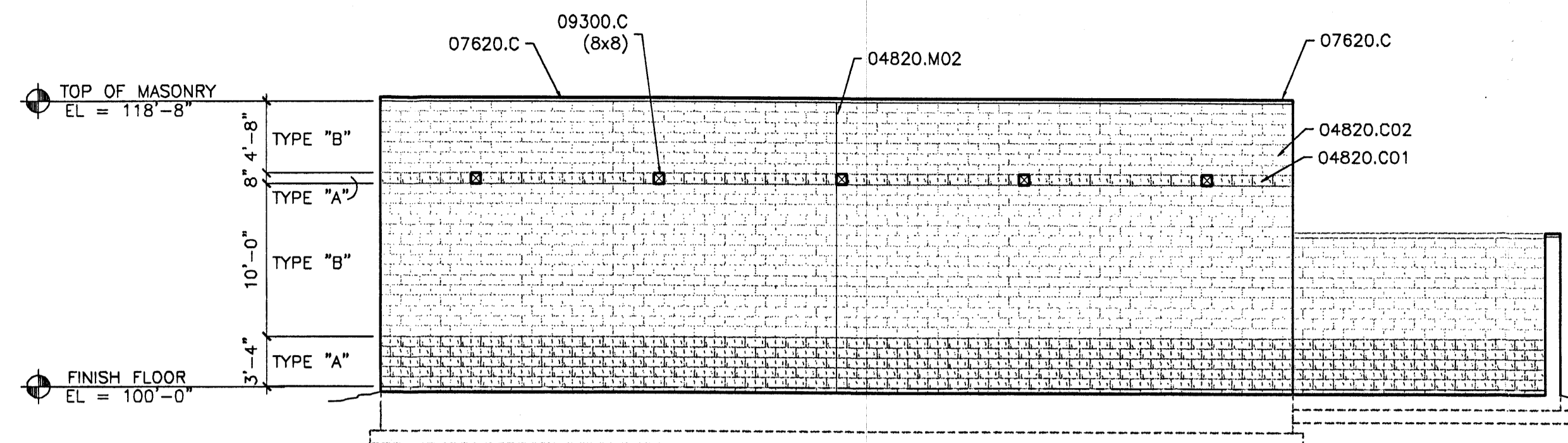
LEGEND

-  CMU TYPE "A" =
-  CMU TYPE "B" =



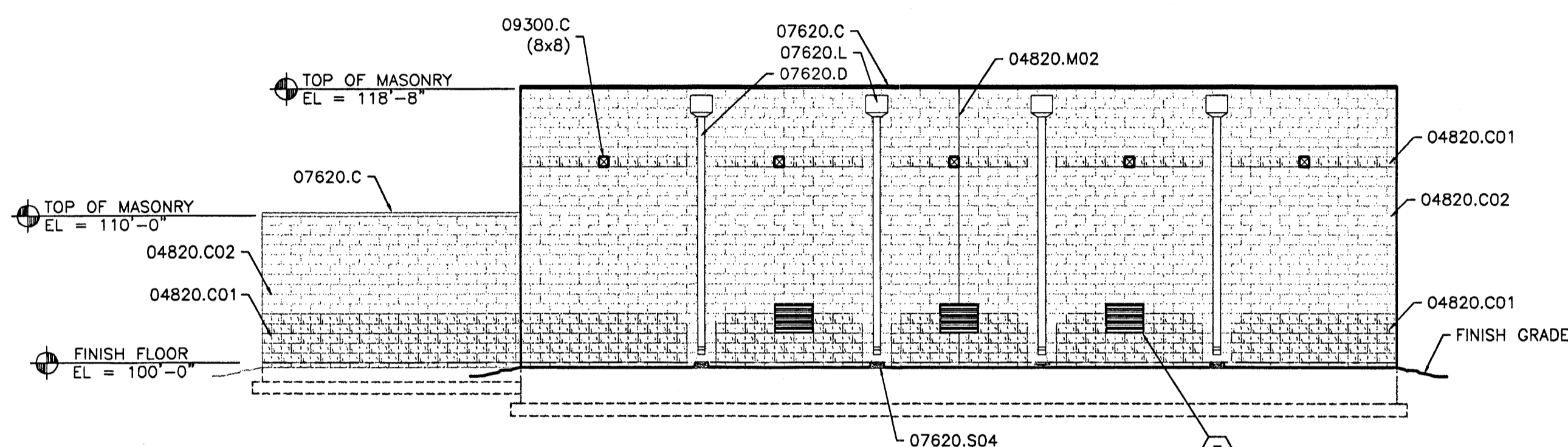
D1 SOUTH ELEVATION

1/8"=1'-0"



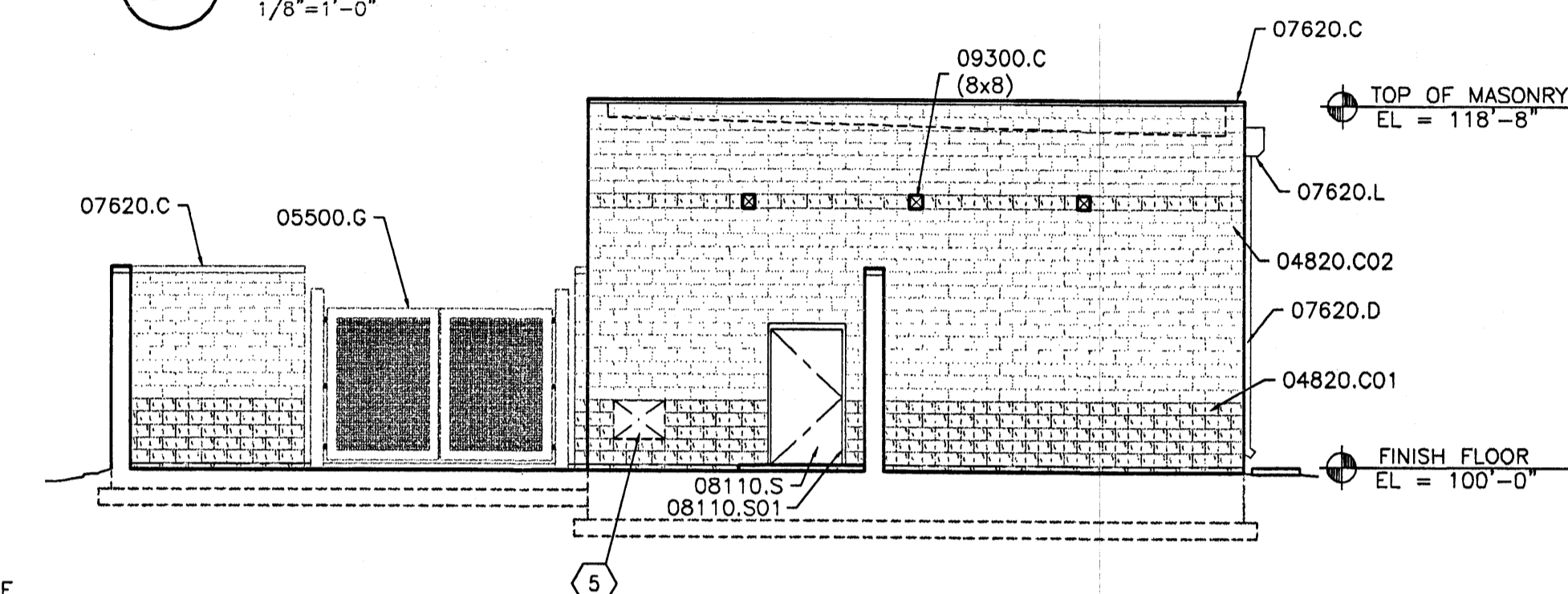
D3 SOUTH ELEVATION-BEHIND SCREEN WALL

1/8"=1'-0"



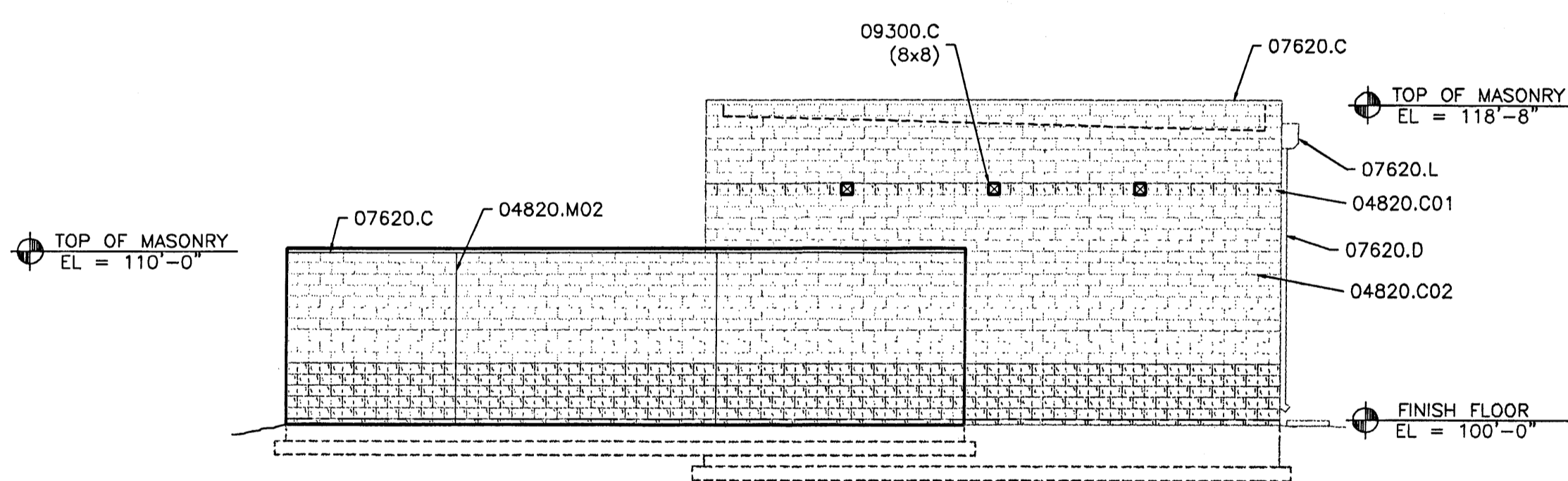
C1 NORTH ELEVATION

1/8"=1'-0"



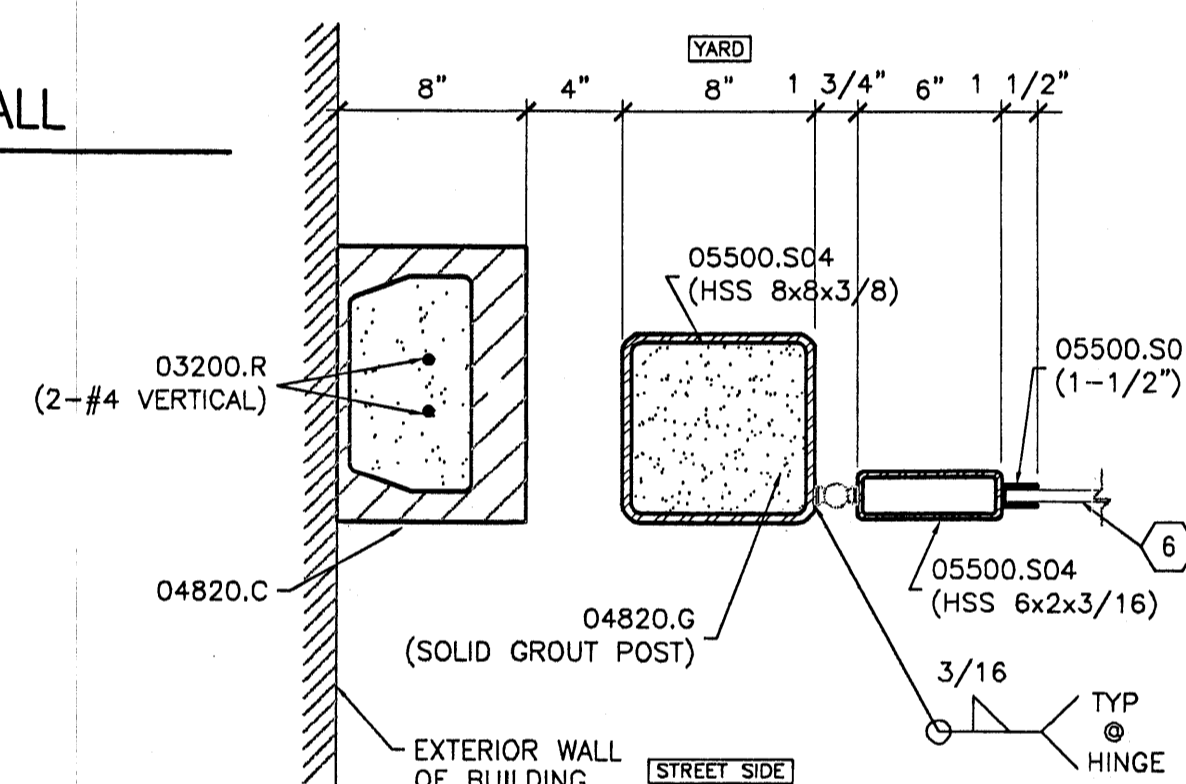
C3 EAST ELEVATION - BEHIND SCREEN WALL

1/8"=1'-0"



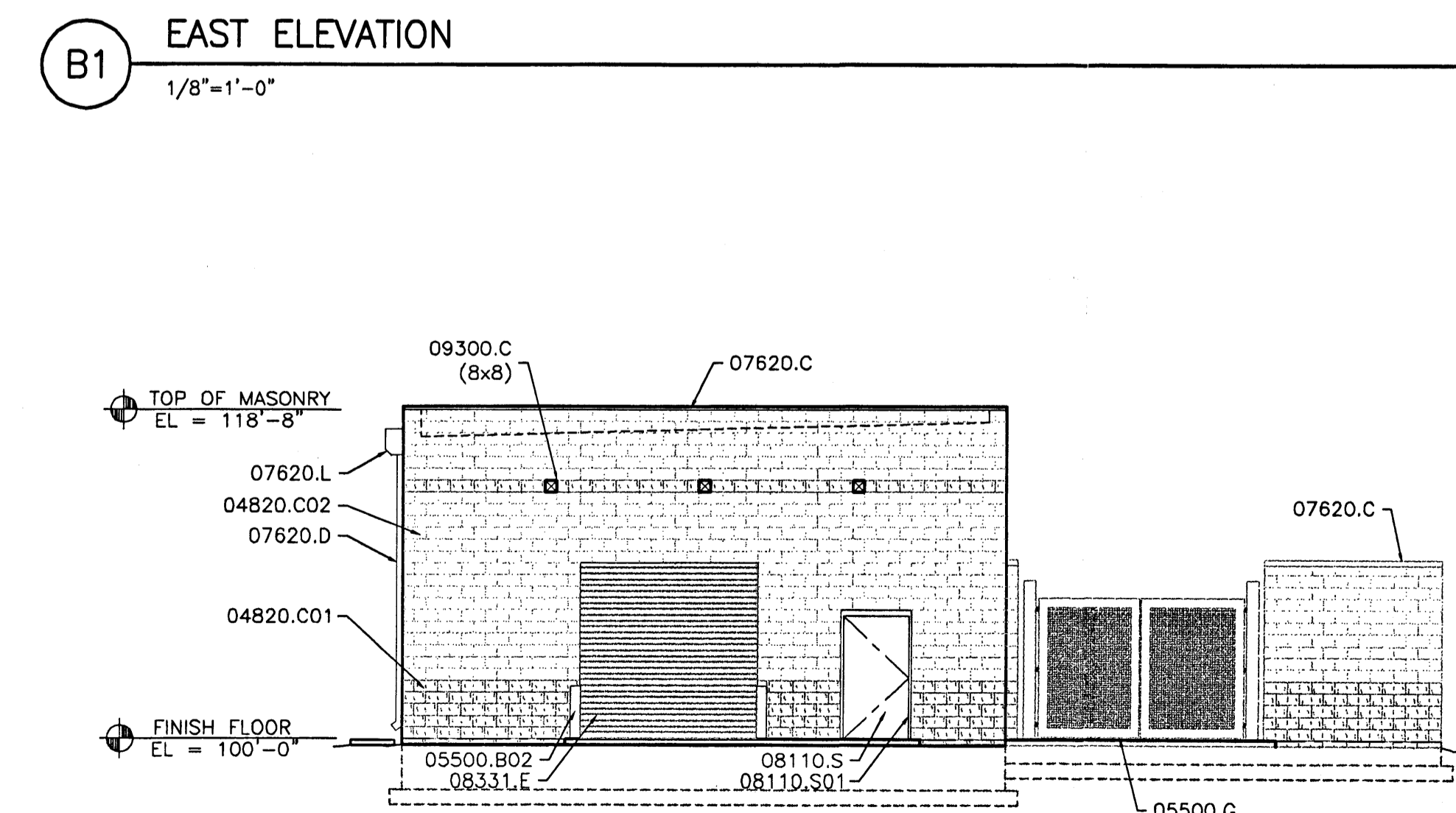
B1 EAST ELEVATION

1/8"=1'-0"



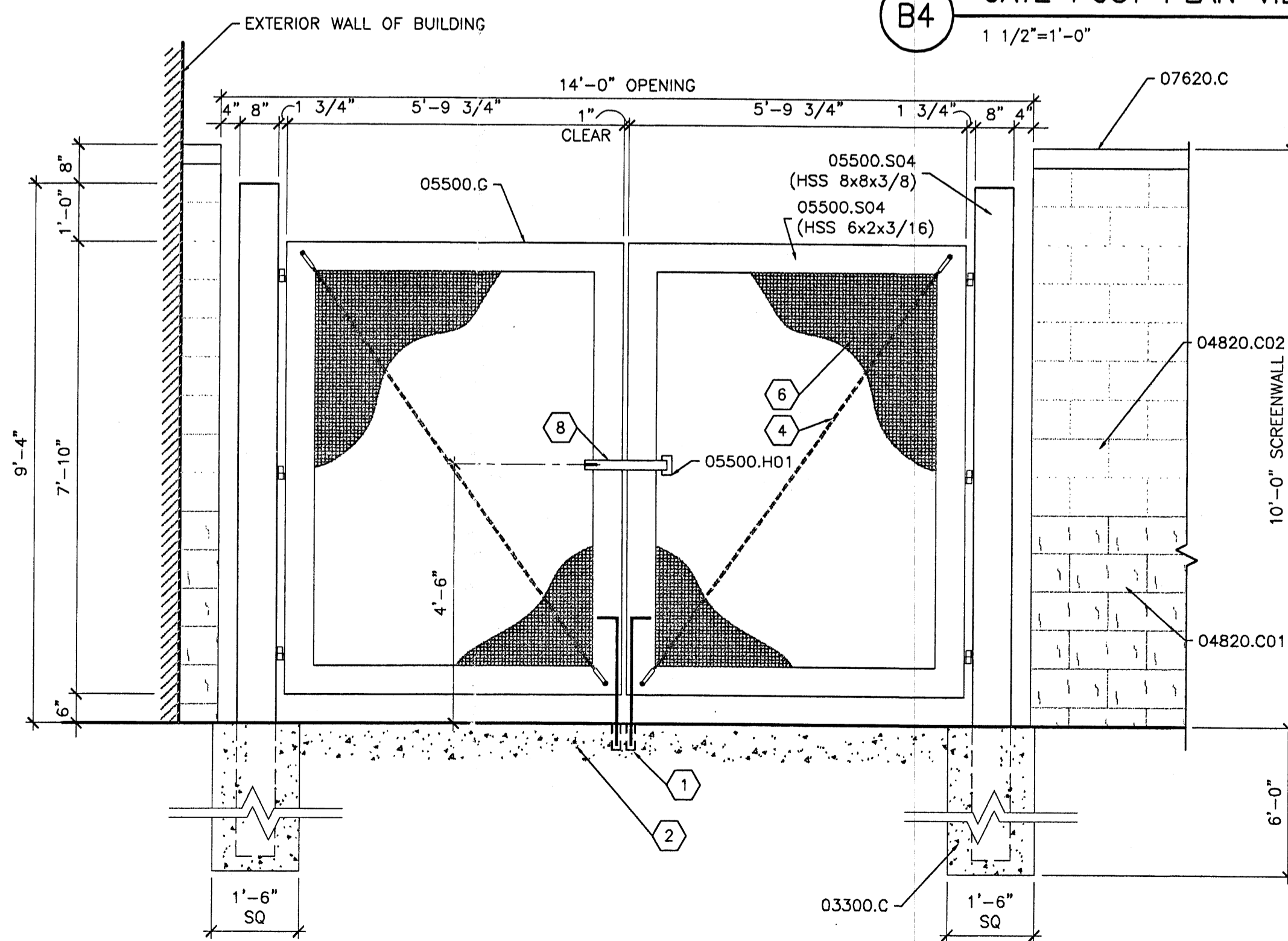
B4 GATE POST PLAN VIEW

1 1/2"=1'-0"



A1 WEST ELEVATION

1/8"=1'-0"



A3 GATE ELEVATION - SECTION WALL

1/2"=1'-0"

WILSON & COMPANY

4900 LANG AVENUE N.E.
SUITE 100
ALBUQUERQUE, NEW MEXICO
87109
(505) 348-4000

STATE OF NEW MEXICO
HOWARD M. KAPLAN
No. 761
REGISTERED ARCHITECT

CITY OF ALBUQUERQUE
PUBLIC WORKS DEPARTMENT
ENGINEERING GROUP

**VOLCANO CLIFFS ZONE 4W
WATER PUMP STATION
ELEVATIONS**

Design Review Committee	City Engineer Approval	Last Design Update	Mo./Day/Yr.	Mo./Day/Yr.
City Project No.	Zone Map No.	Drawing	Sheet	
707391	E-9, E10	A-02	94	

BUILDING CRITERIA

THIS BUILDING HAS BEEN DESIGNED TO MEET THE REQUIREMENTS OF 1997 NEW MEXICO AND UNIFORM BUILDING CODES AND COA ZONING REQUIREMENTS

TYPE OF BUILDING CONSTRUCTION	TYPE II-N
ALLOWABLE SQUARE FOOTAGE	18,000 SF
ACTUAL GROSS SQUARE FOOTAGE	124 SF
ALLOWABLE BUILDING HEIGHT	55 FT
ACTUAL BUILDING HEIGHT ABOVE GRADE	11 FT
OCCUPANCY GROUP	F1 - INDUSTRIAL OCCUPANCY
NFPA CLASSIFICATION	NFPA 101 SPECIAL USE INDUSTRIAL, UNOCCUPIED
BUILDING USE	SHED TO HOUSE METERING PUMP

EXTERIOR PROTECTION BASED ON LOCATION ON PROPERTY
 UBC 503.4.2 EXCEPTION TO TABLE 5-A
 FIRE-RESISTIVE RATING NOT REQUIRED FOR EXTERIOR WALL OF ONE-STORY, TYPE II-N IF AREA IS LESS THAN 1,000 SF AND SEPARATION IS GREATER OR EQUAL TO 5FT

BUILDING SITE	LEAVITT	WEBSTER	WEST MESA
DISTANCE TO NEAREST PROPERTY LINE	72'	54'	14'
DISTANCE TO NEAREST BUILDING	5'	22'	5'

UBC DESIGN OCCUPANT LOAD (FOR EGRESS REQUIREMENT) 94 SF OCCUPIABLE AREA /300 SF = 1 OCCUPANT

36" MIN WIDTH EXITS PROVIDED 1
 36" MIN WIDTH EXITS REQUIRED 1

STAIRWAY: EXEMPT FROM REQUIREMENTS OF SECTION 1003.3.3
 CODE CRITERIA HAS BEEN MET WHEREVER POSSIBLE.
 STAIRS AND LANDING WIDTHS ARE 3'-0", MIN.

PLUMBING FIXTURES REQUIRED NONE REQUIRED FOR MECHANICAL EQUIPMENT SPACES

SEISMIC ZONE 2

No Chemicals are stored within the shed. Liquid Chemicals are stored in underground tanks and injected into a closed system. A 14" thick concrete wall separates the tank and its containment area from the shed. Chemicals are as follows:

SOLUTION OF 0.8% SODIUM HYPOCHLORITE (NaOCl) AND 99.2% WATER - 2600 GALLONS
 CLASSIFICATION OF NaOCl (per JT Baker system for storage MSDS)
 not a health hazard - blue label indicates poisonous hazards
 nonflammable - red label indicates flammable hazards
 non-corrosive - white label indicates corrosive hazards
 non-reactive - yellow label indicates reactive hazards, oxidizers and reducers
 product is labeled for general storage with orange label

GENERAL NOTES

- REFER TO SHEET A-7 FOR TYPICAL DETAILS
- INSTALL BASE FLASHING AT PERIMETER OF BUILDING.
- THE BUILDING MANUFACTURER SHALL SUPPLY ALL NECESSARY FRAMING AND CONNECTIONS TO STRUCTURALLY REPLACE ANY PORTIONS OF PANELS REMOVED FOR WALL OPENINGS FOR EQUIPMENT. THE CONTRACTOR SHALL PROVIDE REQUIRED SUPPORT COMPONENTS FOR ALL EQUIPMENT AND TRIM TO MAKE THE INSTALLED EQUIPMENT WEATHERTIGHT.

2701 MILES RD SE
 ALBUQUERQUE, NM 87108
 TEL: 505.242.5700 FAX: 505.242.0673
MOLZEN-CORBIN & Associates
 ENGINEERS/ARCHITECTS/PLANNERS

CH2MHILL
 6001 Indian School Rd, N.E., SUITE 350
 Albuquerque, New Mexico 87110
 (505) 864-5600

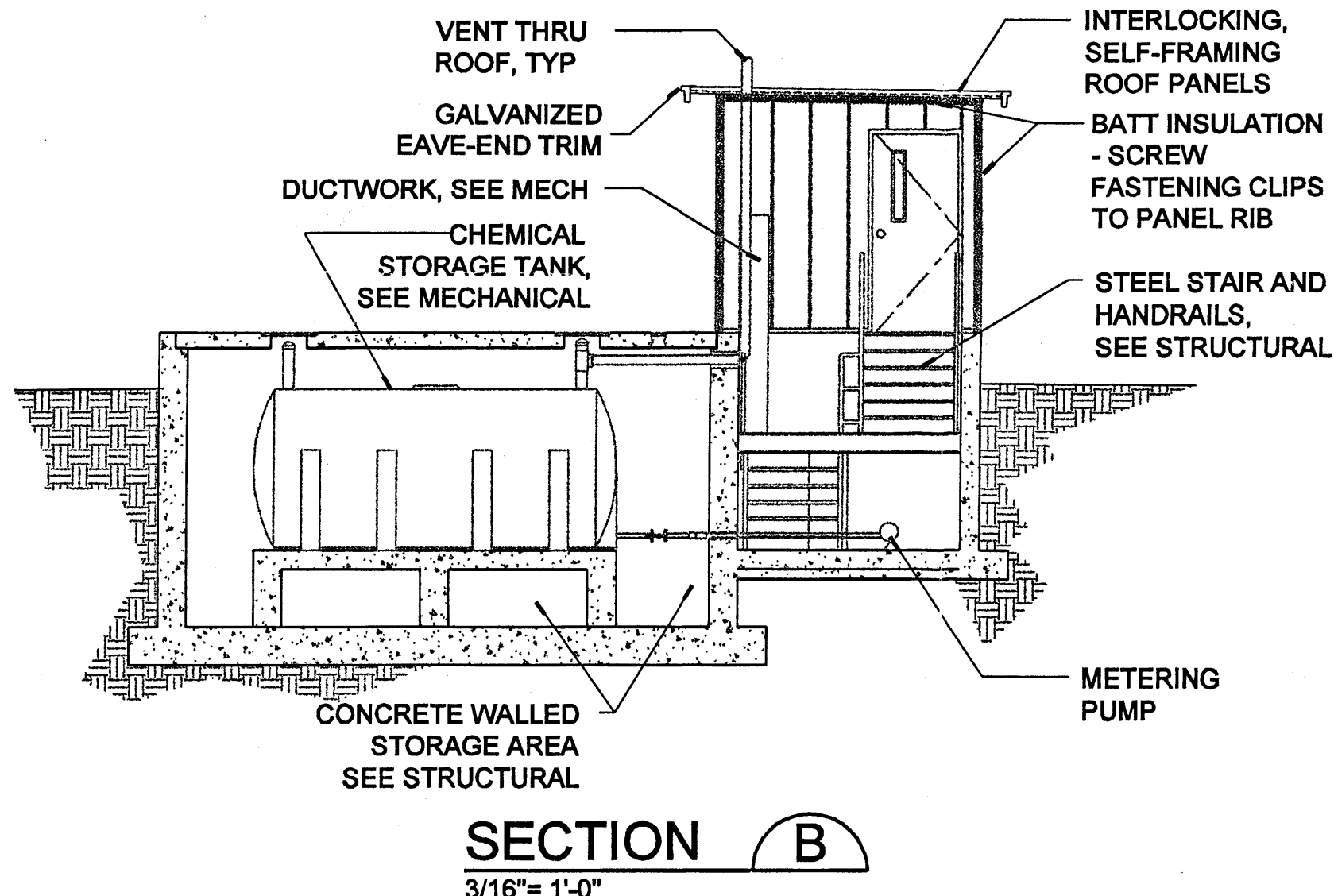
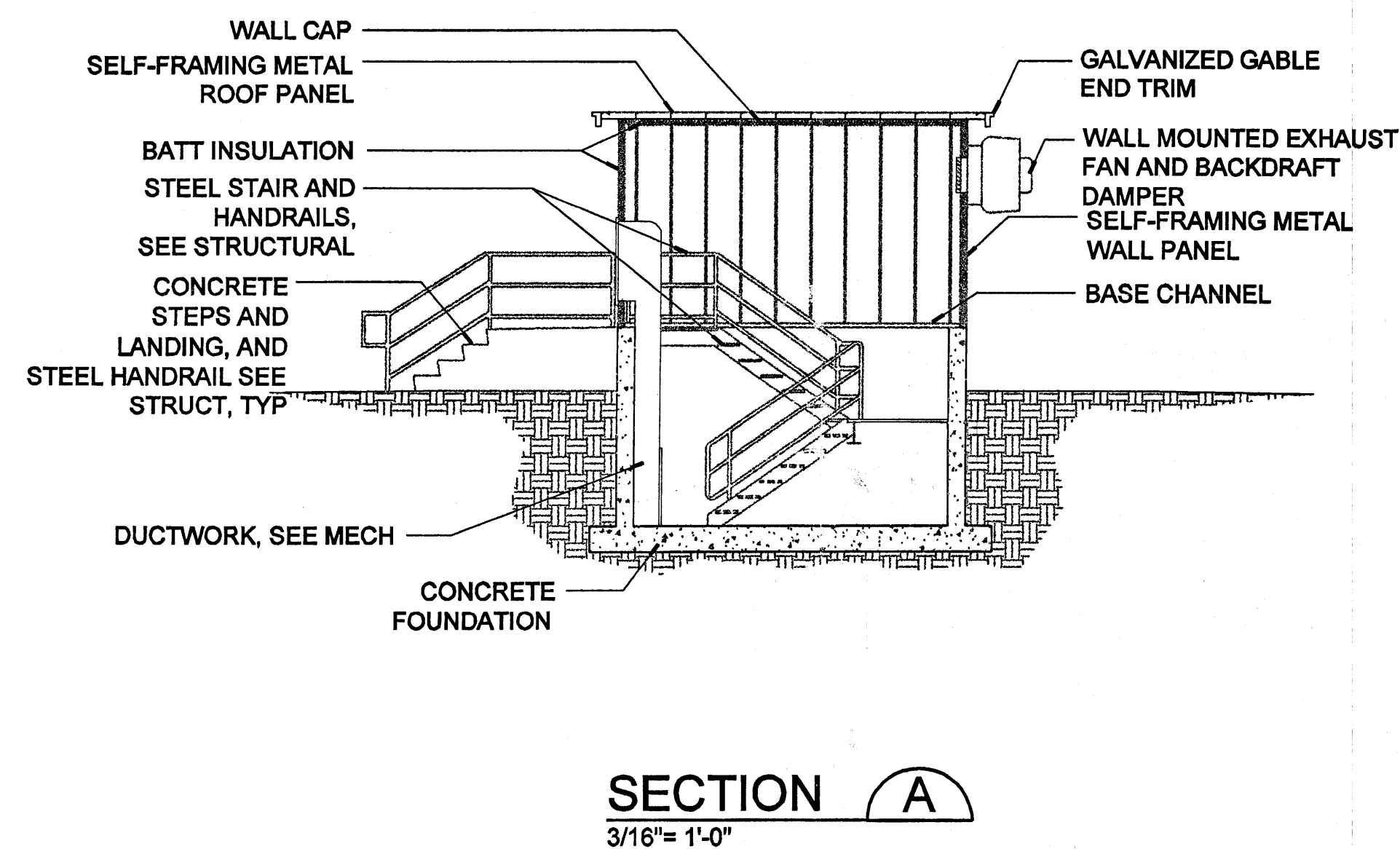
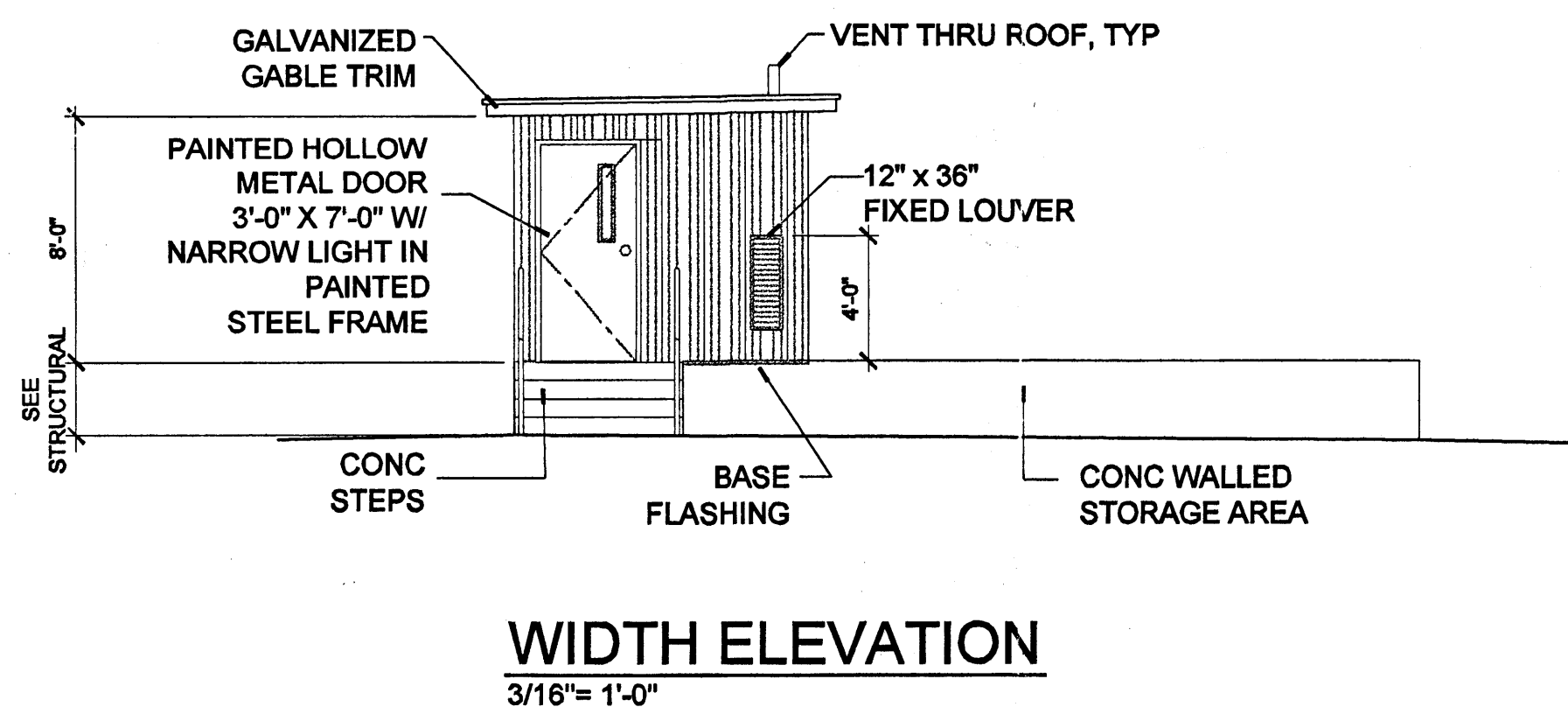
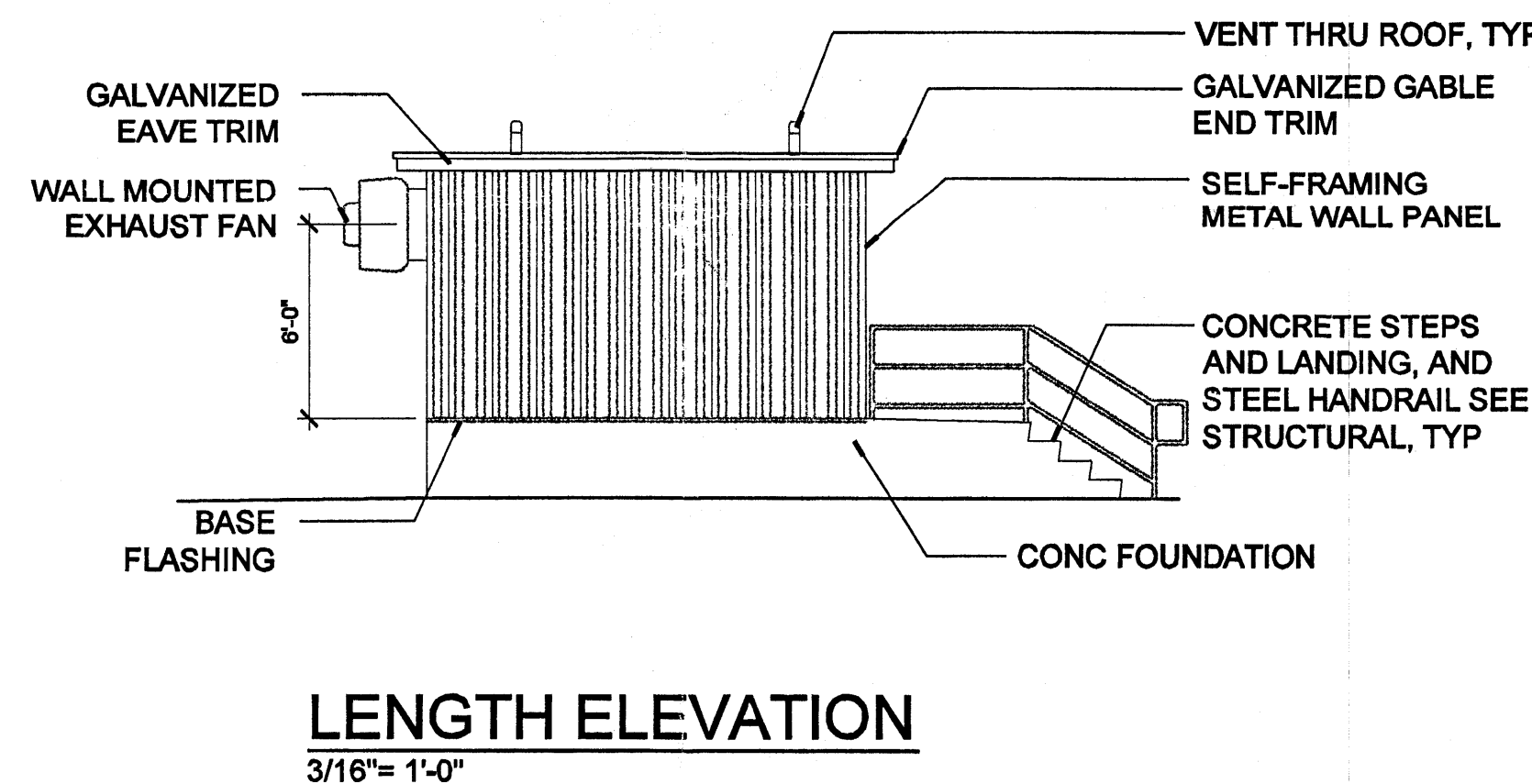
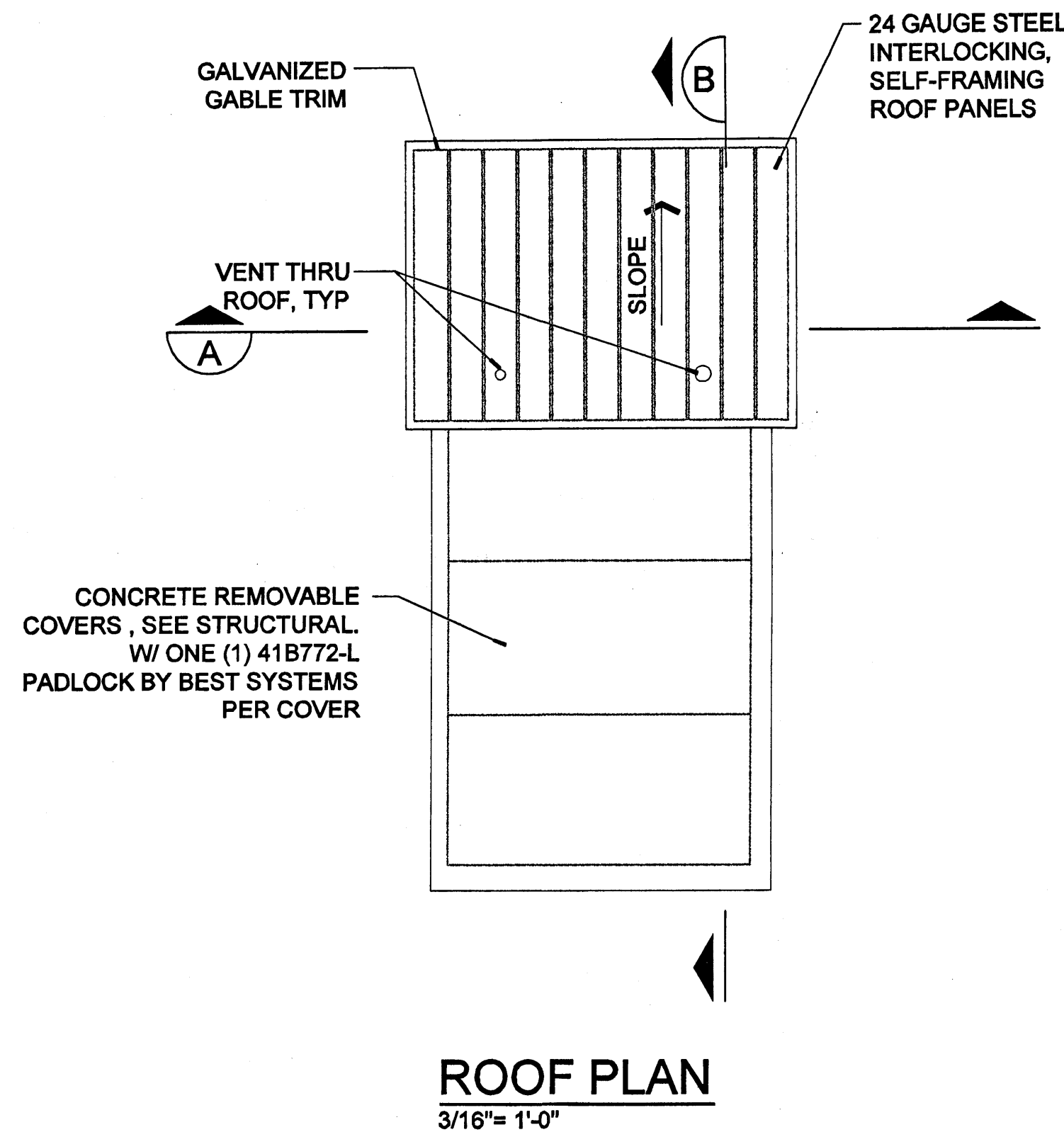
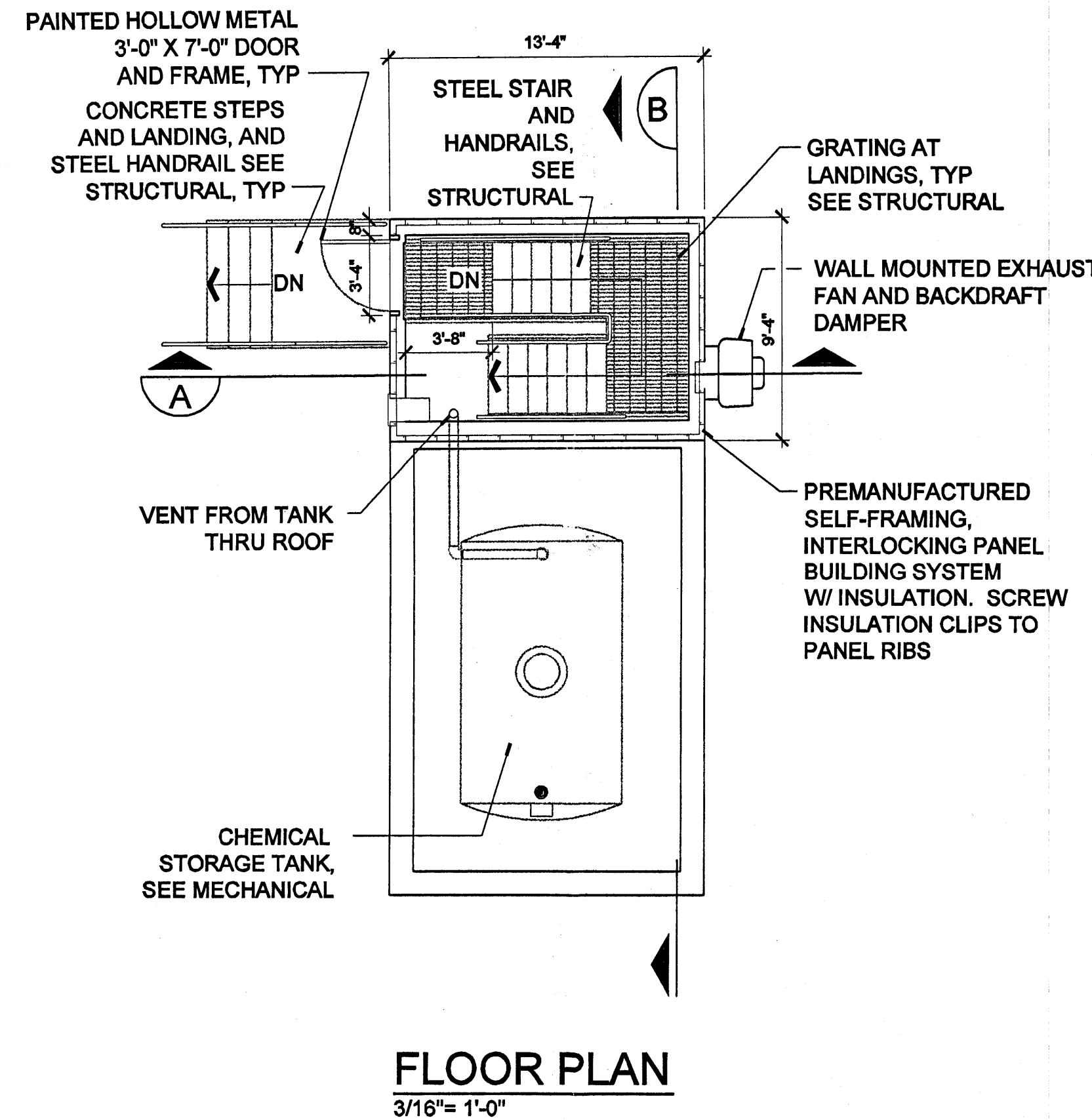
CITY OF ALBUQUERQUE
 PUBLIC WORKS DEPARTMENT
 ENGINEERING DIVISION

TITLE: CHEMICAL STORAGE FACILITIES - PHASE 2
TYPE II - PLANS, ELEVATIONS AND SECTIONS

Design Review Committee	City Engineer Approval	Mo./Day/Yr.	Mo./Day/Yr.

City Project No. 6408.92 Zone Map No. SHEET 22 OF 52
 New Mexico Finance Authority Project No. 1035-DW & 1036-PP DRAWING NO. A-2

AS BUILT INFORMATION		BENCH MARKS		SURVEY INFORMATION		ENGINEER'S SEAL	
CONTRACTOR	DATE	NO.	DATE	NO.	DATE	NO.	DATE
INSPECTOR	DATE	NO.	DATE	NO.	DATE	NO.	DATE
FIELD	DATE	NO.	DATE	NO.	DATE	NO.	DATE
VERIFICATION	DATE	NO.	DATE	NO.	DATE	NO.	DATE
CORRECTED BY	DATE	NO.	DATE	NO.	DATE	NO.	DATE
RECORDED BY	DATE	NO.	DATE	NO.	DATE	NO.	DATE



VERIFY SCALES
 BAR IS ONE INCH ON ORIGINAL DRAWING
 0" 1"
 IF NOT ONE INCH ON THIS SHEET, ADJUST SCALES ACCORDINGLY.