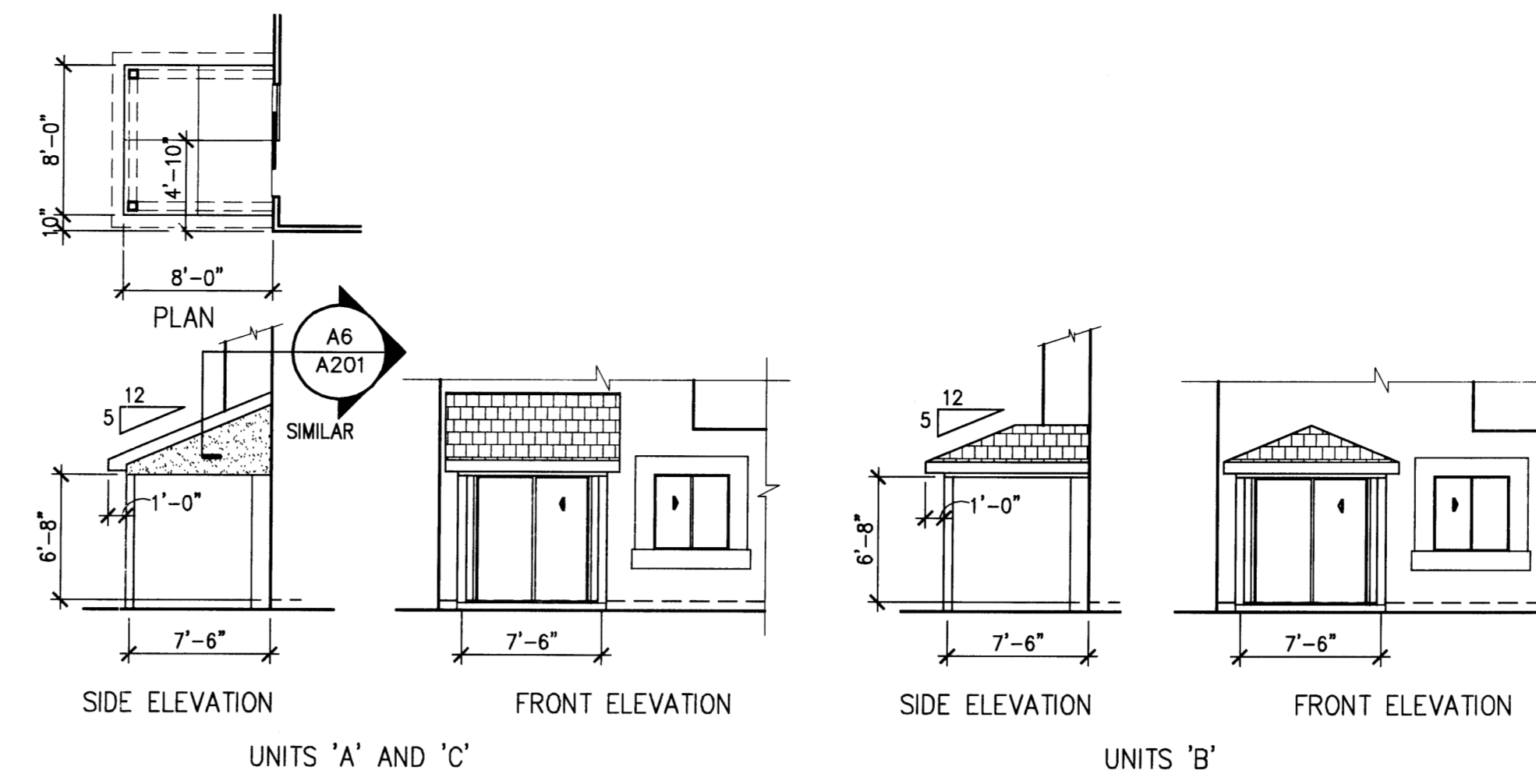


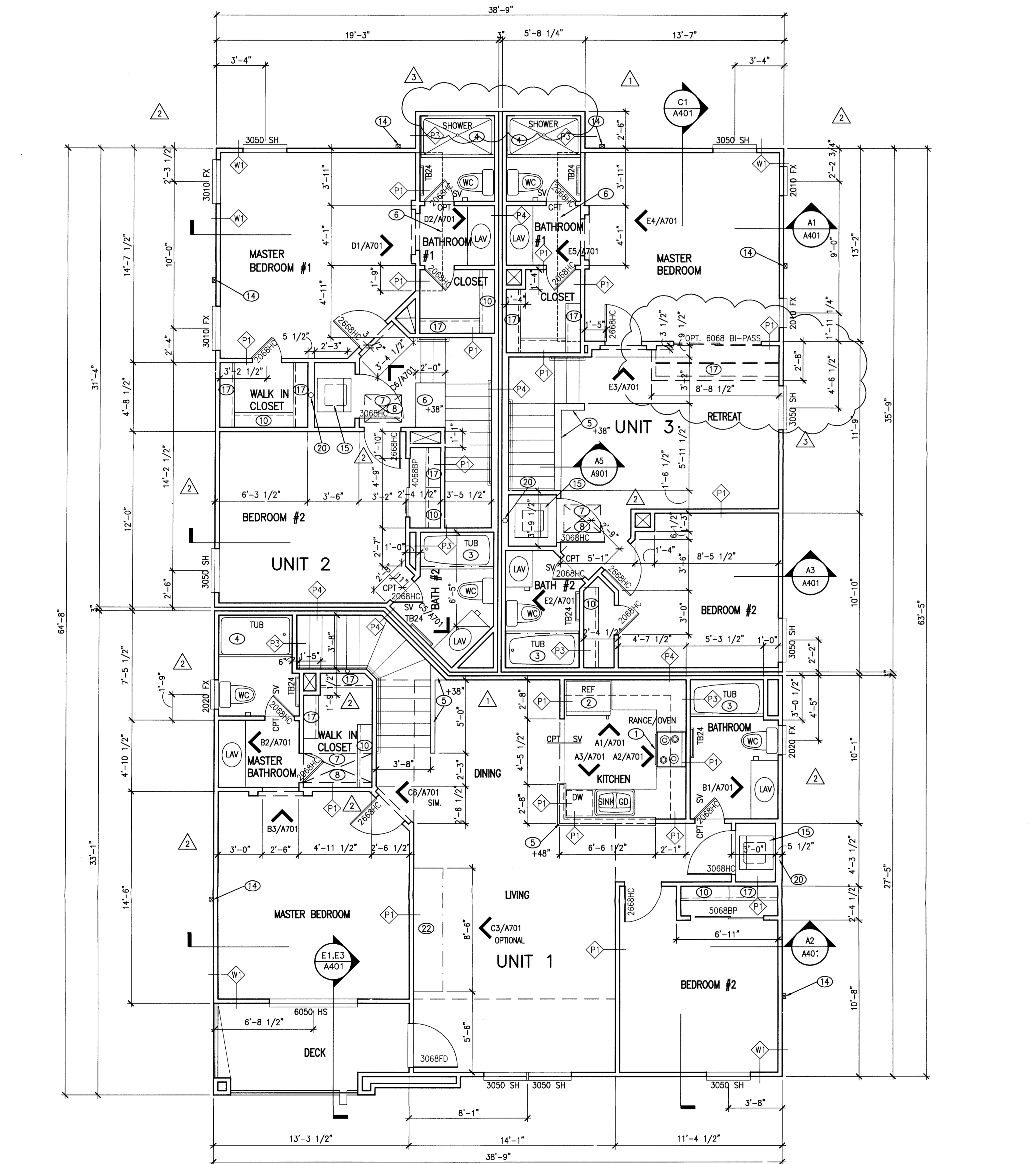
E2 'A' DECK PLAN
SCALE: 1/4" = 1'-0"

E2 'B' DECK PLAN
SCALE: 1/4" = 1'-0"

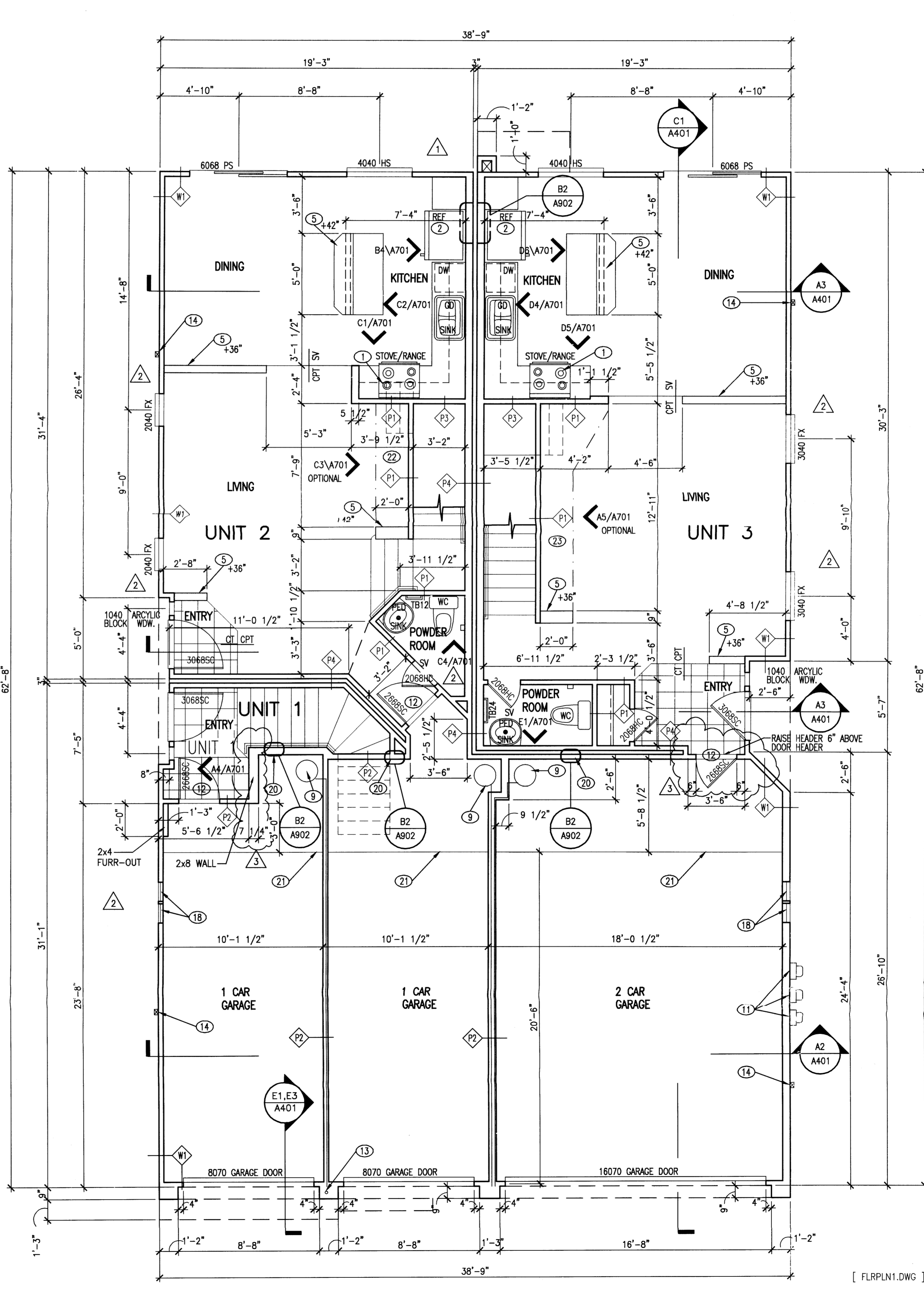
E3 'C' DECK PLAN
SCALE: 1/4" = 1'-0"



E4 COVERED PATIO - OPTIONAL
SCALE: 1/8" = 1'-0"



E1 'A' SECOND FLOOR PLAN
SCALE: 1/4" = 1'-0"



E3 'A' FIRST FLOOR PLAN
SCALE: 1/4" = 1'-0"

GENERAL NOTES

A. FIRE PROTECTION UNDER STAIRS: 2 LAYERS OF 5/8" GYPSUM BOARD, SUPPORTED AT 16" O.C.

KEYED NOTES

- OVEN W/ VENT FAN, DUCT THROUGH ROOF OR FLOOR. (N.I.C.)
- REFRIGERATOR SPACE, PROVIDE WATER CONNECTION IN WALL.
- 30"x60" FIBERGLASS TUB/SHOWER COMBINATION W/SHOWER CURTAIN ROD. MOUNT SHOWER HEAD AT 6'-6" A.F.F.
- 34"x60" FIBERGLASS SHOWER WITH SIMULATED TILE SURROUNDINGS WITH CURTAIN ROD. MOUNT SHOWER HEAD AT 6'-6" A.F.F.
- PARTIAL HEIGHT WALL, HEIGHT AS NOTED, REFER DTL. A5/A601
- POT SHELF - GYP. BD. OVER 1/2" PLYWOOD OVER 2x FRAMING, REFER CORRESPONDING INTERIOR ELEVATION.
- ATTIC ACCESS PANEL, PROVIDE A PERMANENT ELECTRICAL OUTLET AND LIGHT FIXTURE CONTROLLED BY A SWITCH.
- FORCED AIR UNIT (FAU), HORIZONTAL TYPE IN ATTIC SPACE, PROVIDE 1/2" PLYWOOD PLATFORM 24" WIDE FROM ATTIC ACCESS OPENING TO FIREBOX. TYPE OF FAN, PROVIDE A MIN. CLEAR DEPTH OF 30" IN FRONT OF FIREBOX.
- ELECTRIC WATER HEATER WITH RECIRCULATION PUMP, PRESSURE & TEMPERATURE RELIEF VALVE W/ PVC DRAIN LINE ROUTED TO EXTERIOR ABOVE GRADE AS SHOWN ON PLAN. ANCHOR WATER HEATER W/ APPROVED SEISMIC STRAPPING METHOD.
- CLOSET ROD AND SHELF ASSEMBLY, ONE ROD, ONE SHELF.
- ELECTRIC METER LOCATIONS, REFER SITE ELECTRICAL DRAWINGS.
- GARAGE-MAN DOOR, 20 MIN FIRE-RATED DOOR & FRAME ASSEMBLY W/ SELF-CLOSING DEVICE, ALUMINUM THRESHOLD, VINYL GASKET AT DOOR BOTTOM & FULL WEATHERSTRIPPING.
- DRAIN PIPE FROM DECK DRAIN ABOVE, ANGLE PIPE AWAY FROM GARAGE DOOR FRAME.
- DOWNSPOUT- CONNECT TO UNDERGROUND STORM DRAINAGE SYSTEM PER CIVIL DWGS.
- COMBINATION WASHER/DRYER UNIT (N.I.C.)
- NOT USED
- CLOSET ROD AND SHELF ASSEMBLY, TWO RODS, TWO SHELVES.
- 14"x8" GALVANIZED SCREENED SUPPLY AIR VENTS.
- NOT USED
- HOSE BIB AND SHUT OFF VALVE.
- 3 1/2" CURB TYPICAL.
- OPTIONAL ELECTRIC FIREPLACE AND NICHE.
- OPTIONAL ELECTRIC FIREPLACE AND MEDIA CENTER WITH NICHE.

WALL / PARTITION ASSEMBLIES

- EXTERIOR WALL (LOAD BEARING): SYNTHETIC STUCCO FINISH ON 3/8" FIBER REINFORCED STUCCO ON 1" 20 GA METAL LATH ON 2 LAYERS 15# BLOC. PAPER ON 1/2" ASPHALT IMPREGNATED SHEATHING (1/2" CDX PLYWOOD @ CORNERS AND @ 25' O.C.) ON 2x STUDS @ 16" O.C. W/ 3-1/2" R-13 KRAFT FACED BATT INSULATION, 5/8" GYP.BD. ON INTERIOR.
- PARTITION: ONE LAYER 1/2" GYP. BD. BOTH SIDES OF 2x4 STUDS @ 16" O.C. MAX. NOTE: PROVIDE 3-1/2" BATT INSULATION @ WALLS BETWEEN BATHROOM AND BEDROOM.
- ONE HOUR FIRE RATED PARTITION (LOAD BEARING): ONE LAYER 5/8" TYPE "X" GYP. BD. BOTH SIDES OF 2x4 STUDS @ 16" O.C. MAX. CONTINUOUS TO BOTTOM OF ROOF DECK. UL FILE NO. U305, STC 55. NOTE: PROVIDE THIS P2 TYPE PARTITION @ ALL DUCT SHAFTS, TYP.
- PARTITION: ONE LAYER 5/8" TYPE "X" GYP. BD. (WATER RESISTANT GYP. BD. WHERE TUB/SHOWER INSTALLED) ONE SIDE OF 2x4 OR 2x6 STUDS @ 16" O.C. MAX. NOTE: PROVIDE 5-1/2" BATT INSUL. BETWEEN UNITS.
- 2 HOUR FIRE RATING, DOUBLE LAYER 5/8" TYPE "X" GYP. ON 2 ROWS 2x4 OR 2x6 STUDS (WHERE NOTED) AT 16" O.C. ON SEPARATE PLATES 3" APART. STAGGER VERTICAL JOINTS, PERIMETER CALKED, JOINTS FINISHED. FIRE RATING PER GA FILE NO. WP 3820. STC RATING PER WP 3820 OF 55-59.

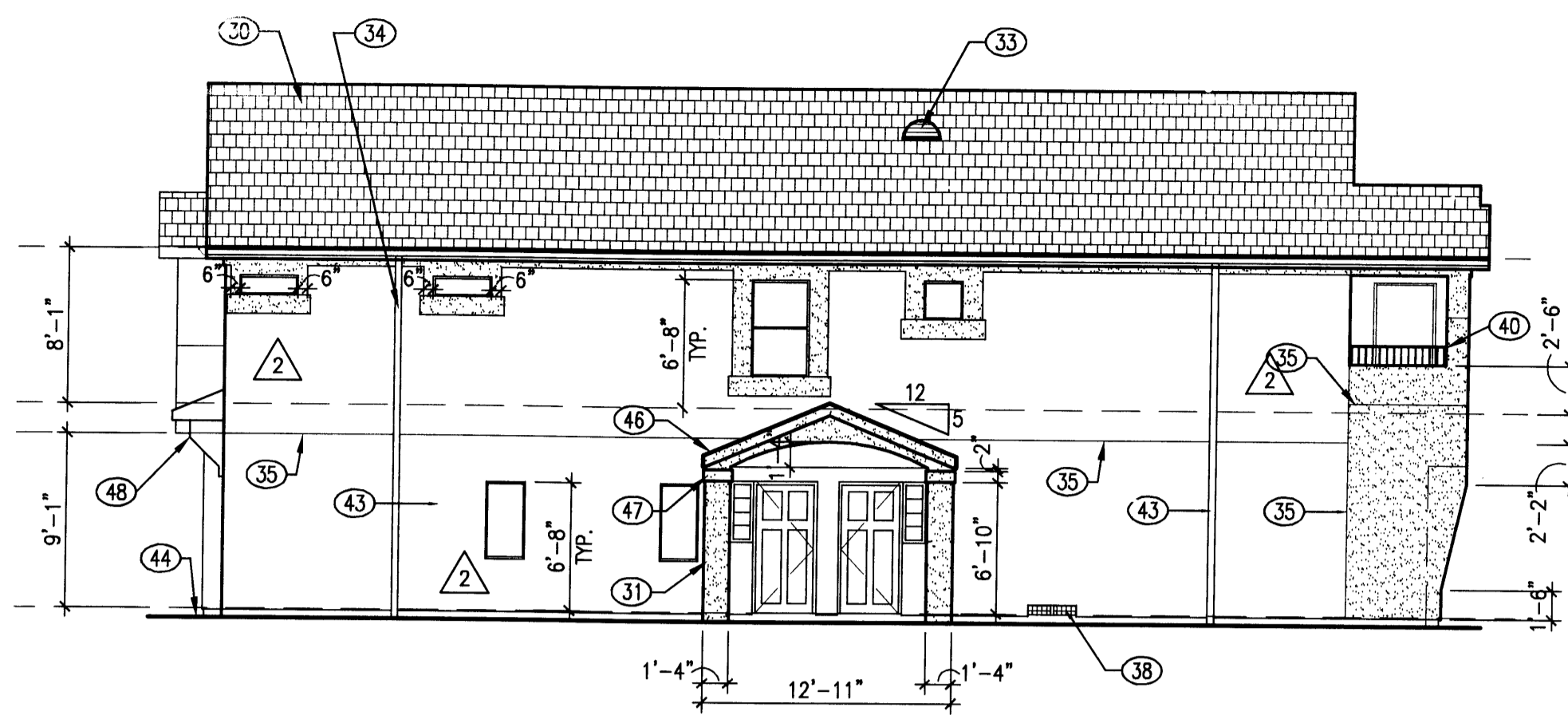
THE DESIGN GROUP
ARCHITECTS - PLANNERS - INTERIOR DESIGN
303 CENTRAL AVENUE SE, SUITE 200
ALBUQUERQUE, NEW MEXICO 87102
PHONE: 505.252.6880 FAX: 505.242.6811

PROJECT NAME:	
RANCHO ENCANTADO CONDOMINIUMS	
D. R. Horton Homes	
Albuquerque, New Mexico	
REVISIONS	
NO.	DATE / DESCRIPTION
1	2/25/04 OWNER REVISIONS
2	5/24/04 OWNER REVISIONS
3	6/17/04 OWNER REVISIONS

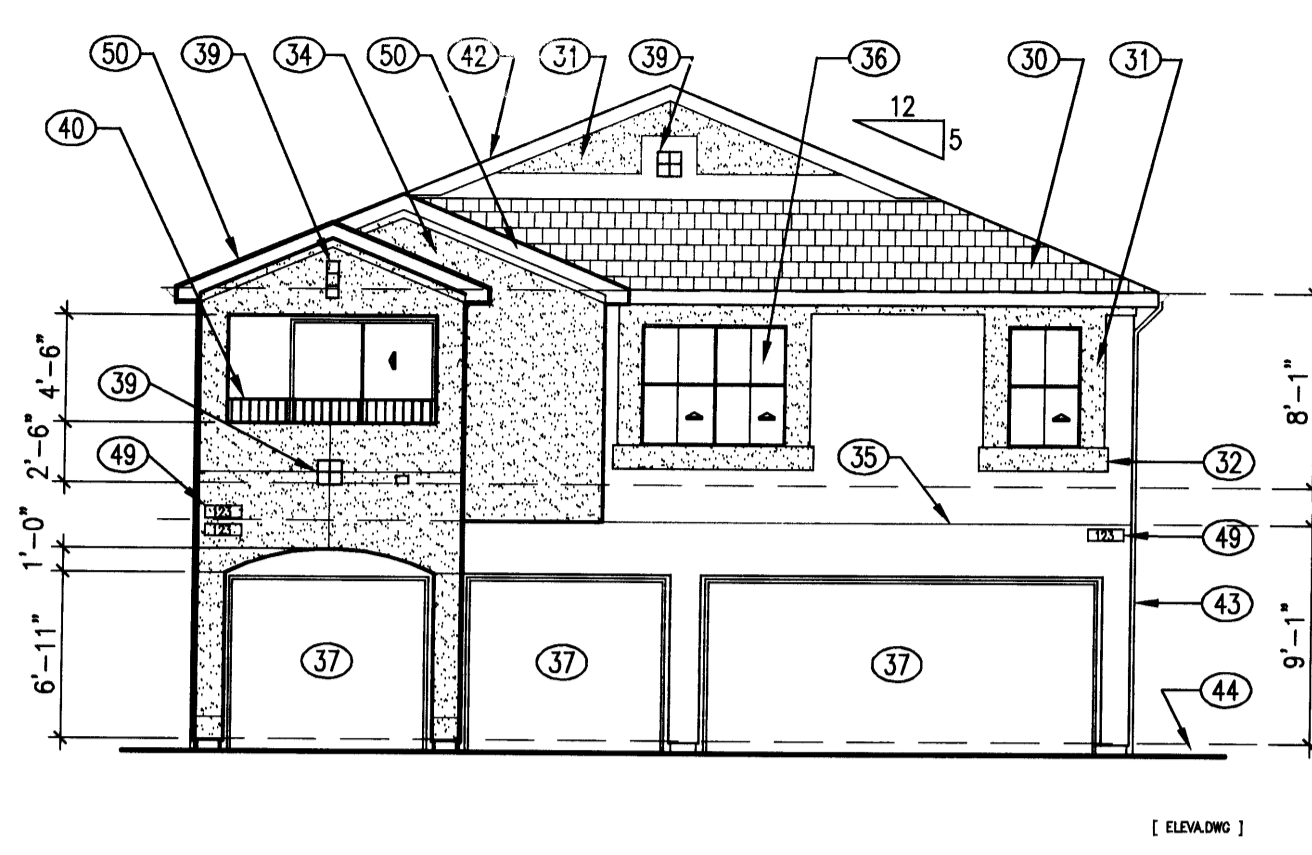
SHEET TITLE:
First/Second
Floor Plans

DESIGNED:	SCALE:
JMG	1/4" = 1'-0"
DM	JOB NO. 2235
11/26/03	COMP. FILE: 2235-A101

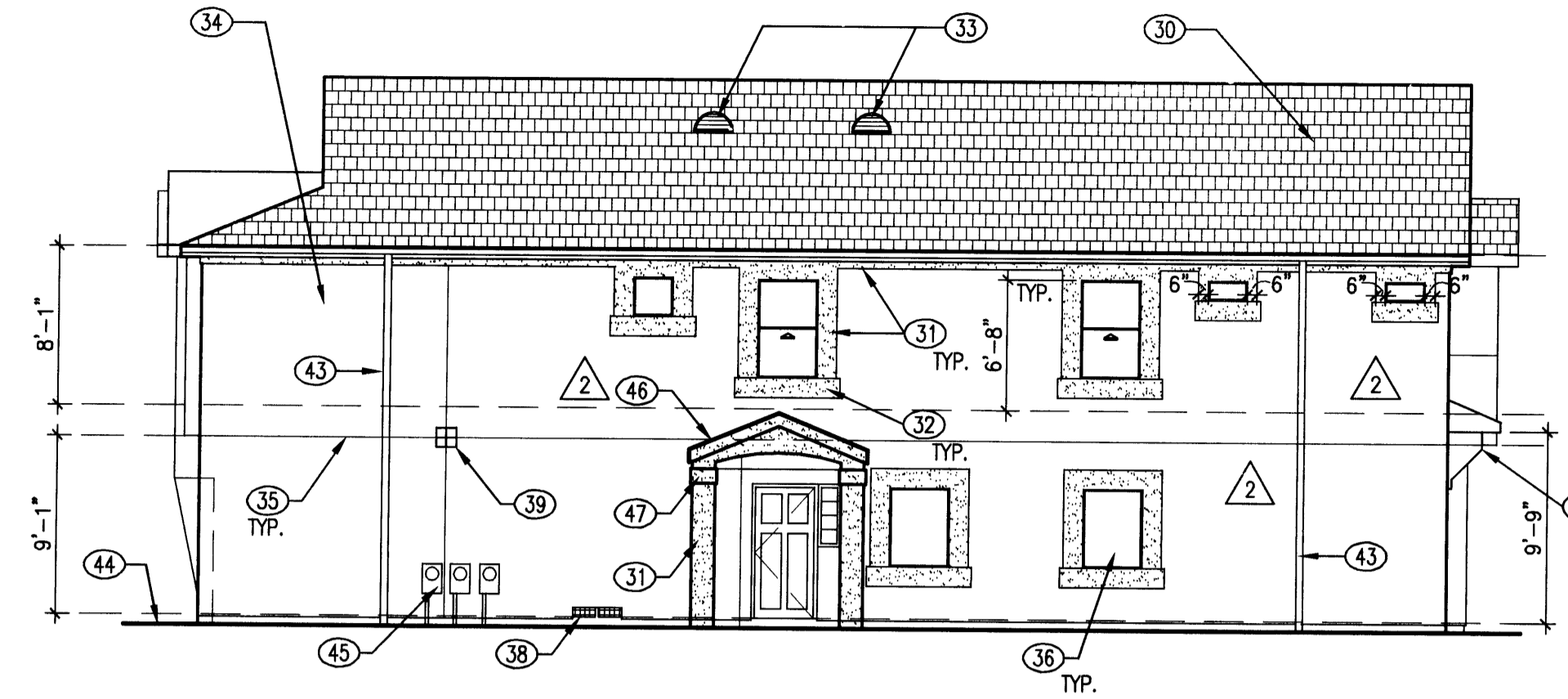
A101
DRB
02 DRB
01893
02/26/04
Project
1002384



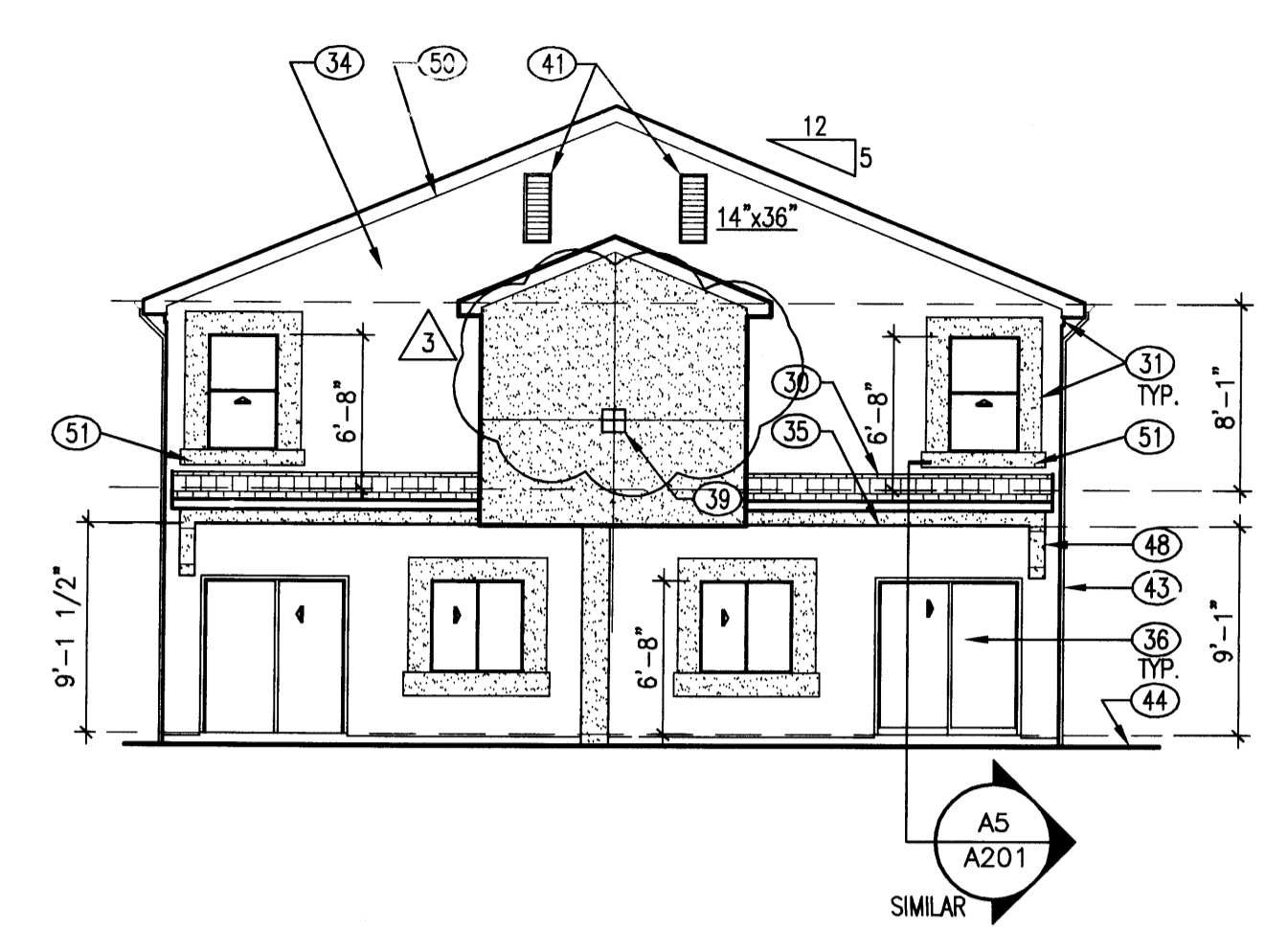
D1 'A' LEFT SIDE ELEVATION
SCALE: 1/8" = 1'-0"



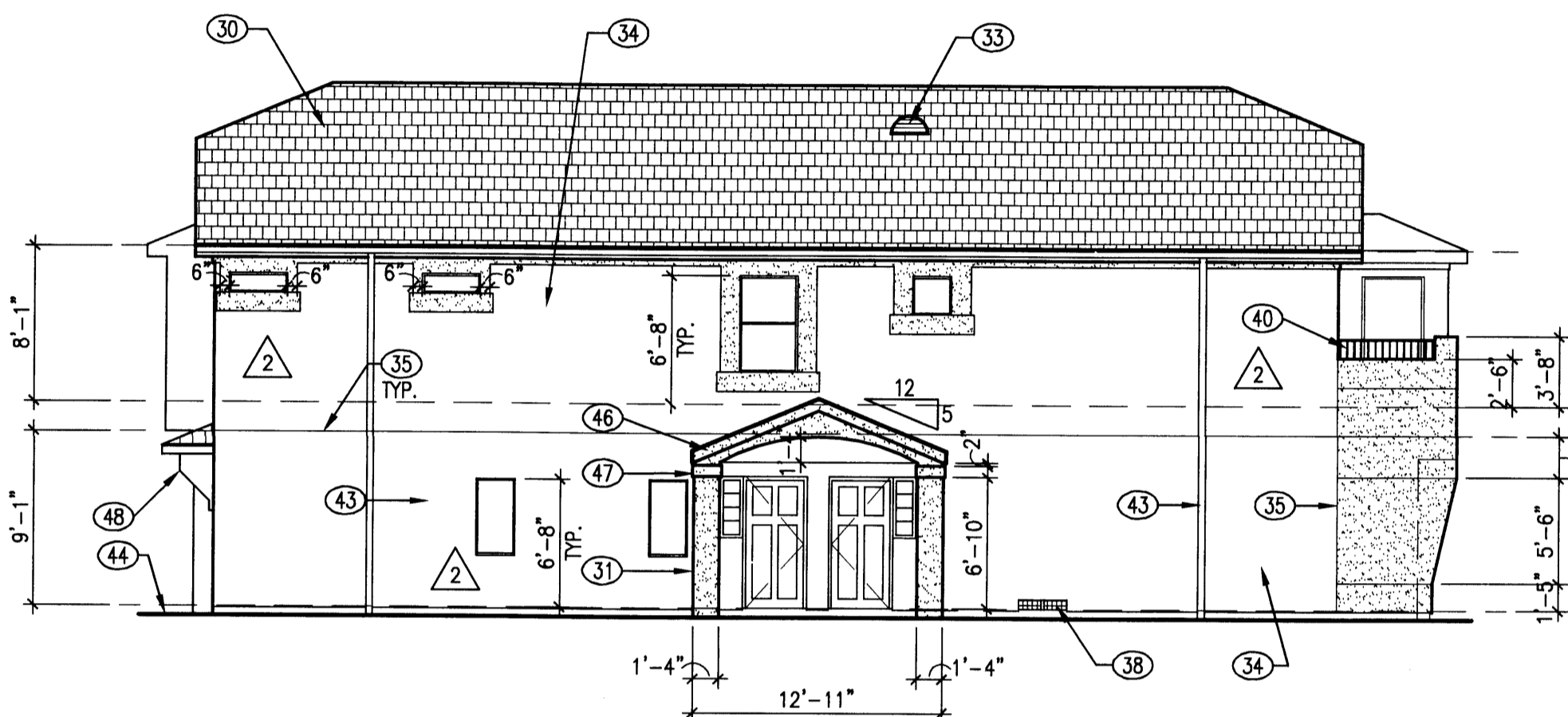
D2 'A' FRONT ELEVATION
SCALE: 1/8" = 1'-0"



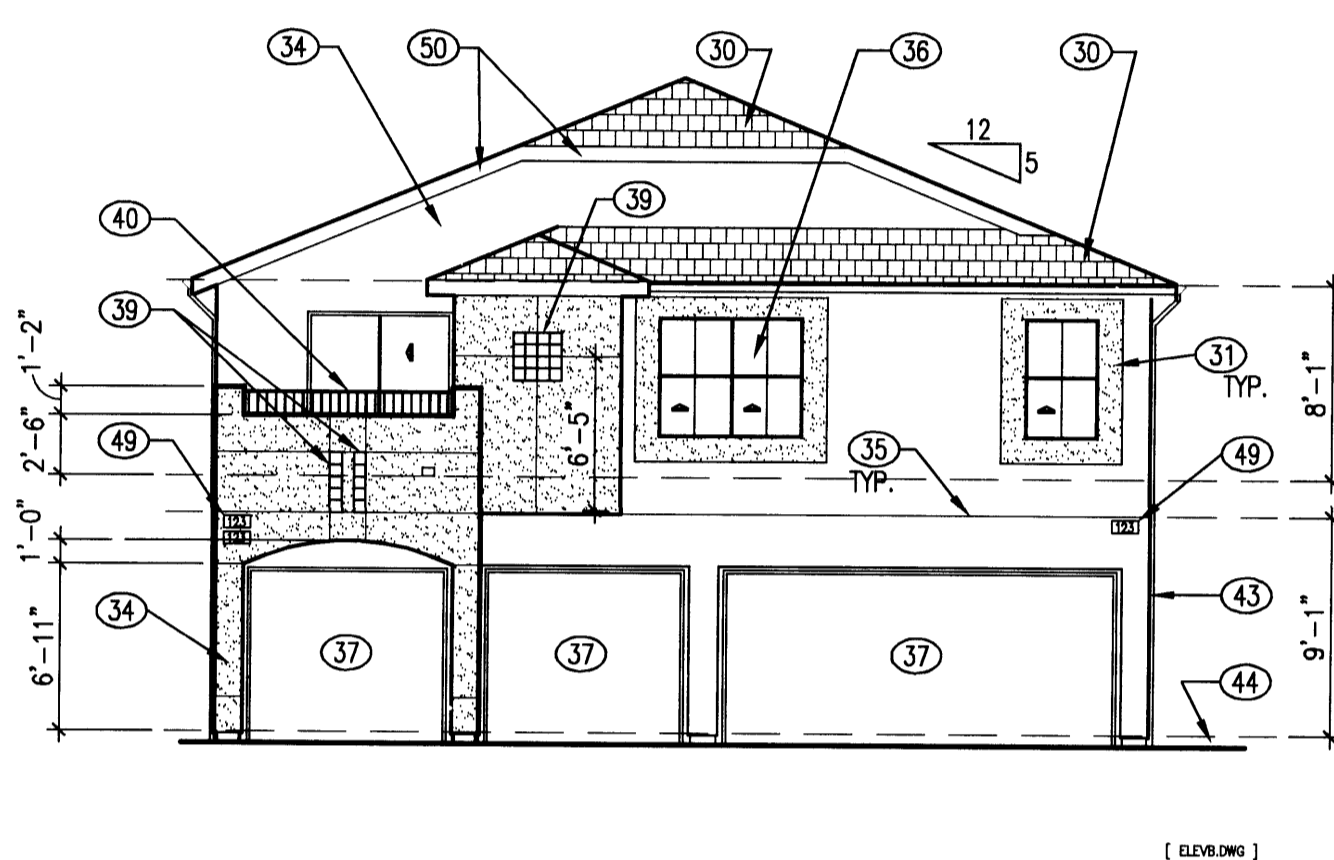
D3 'A' RIGHT SIDE ELEVATION
SCALE: 1/8" = 1'-0"



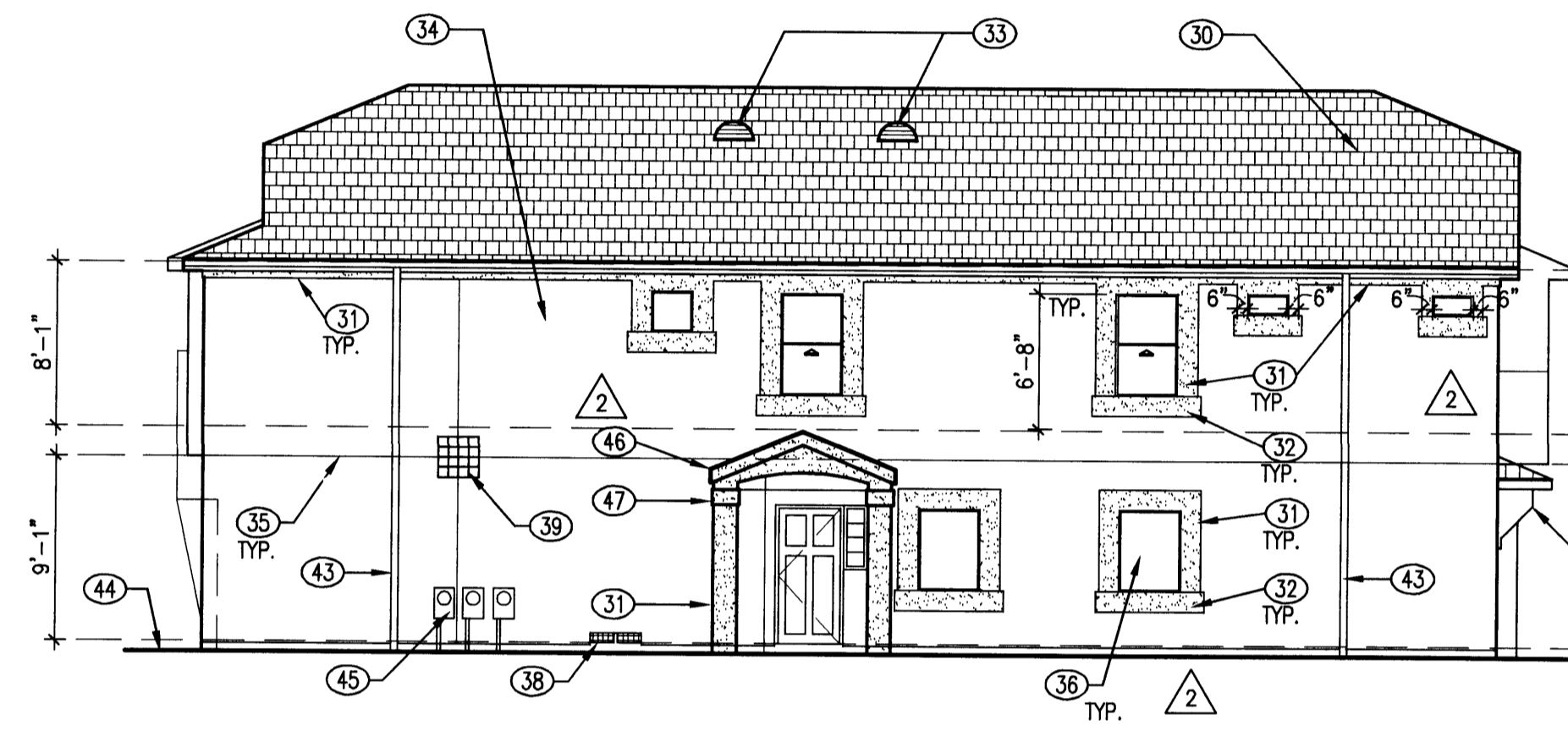
D4 'A' REAR ELEVATION
SCALE: 1/8" = 1'-0"



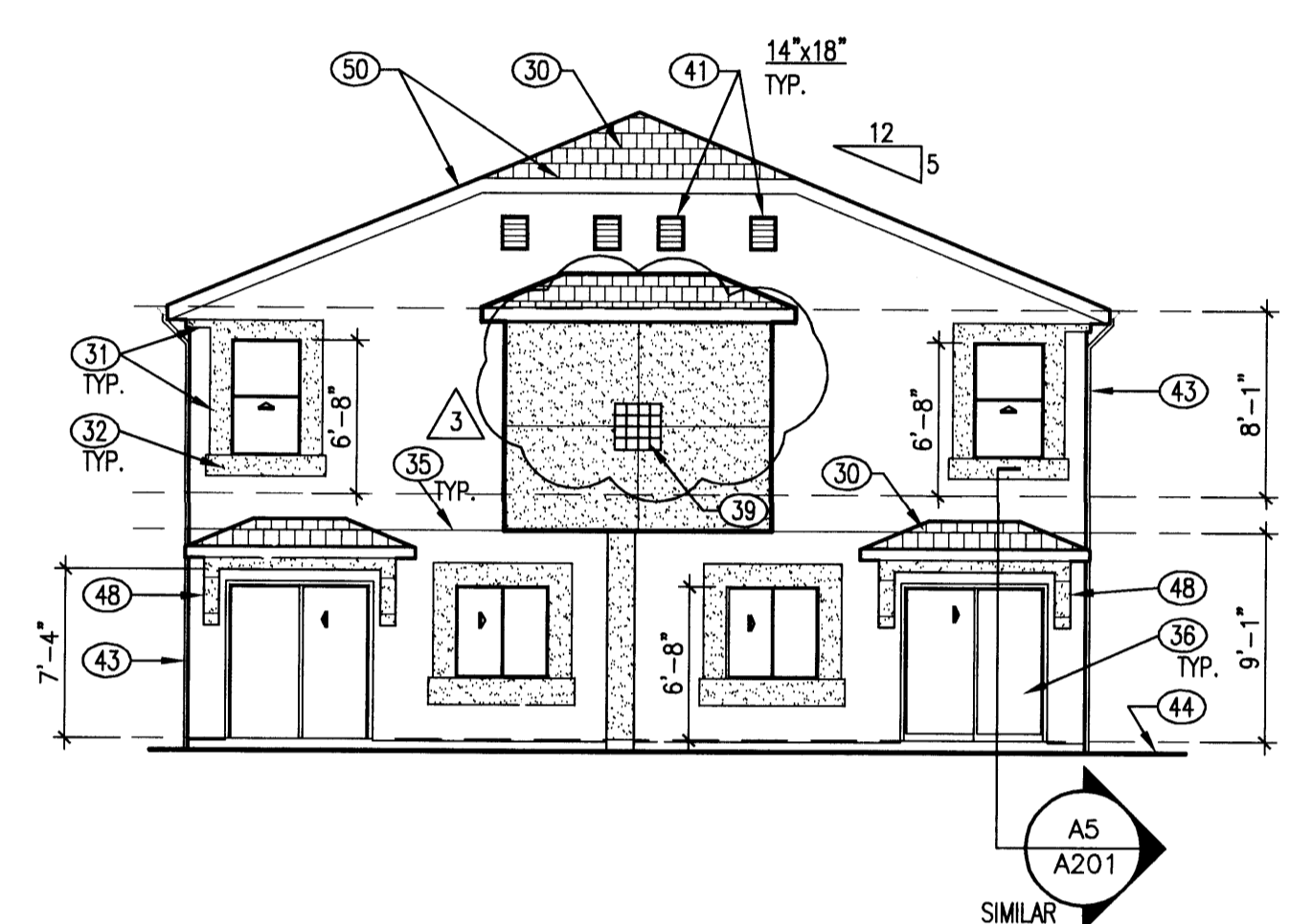
C1 'B' LEFT SIDE ELEVATION
SCALE: 1/8" = 1'-0"



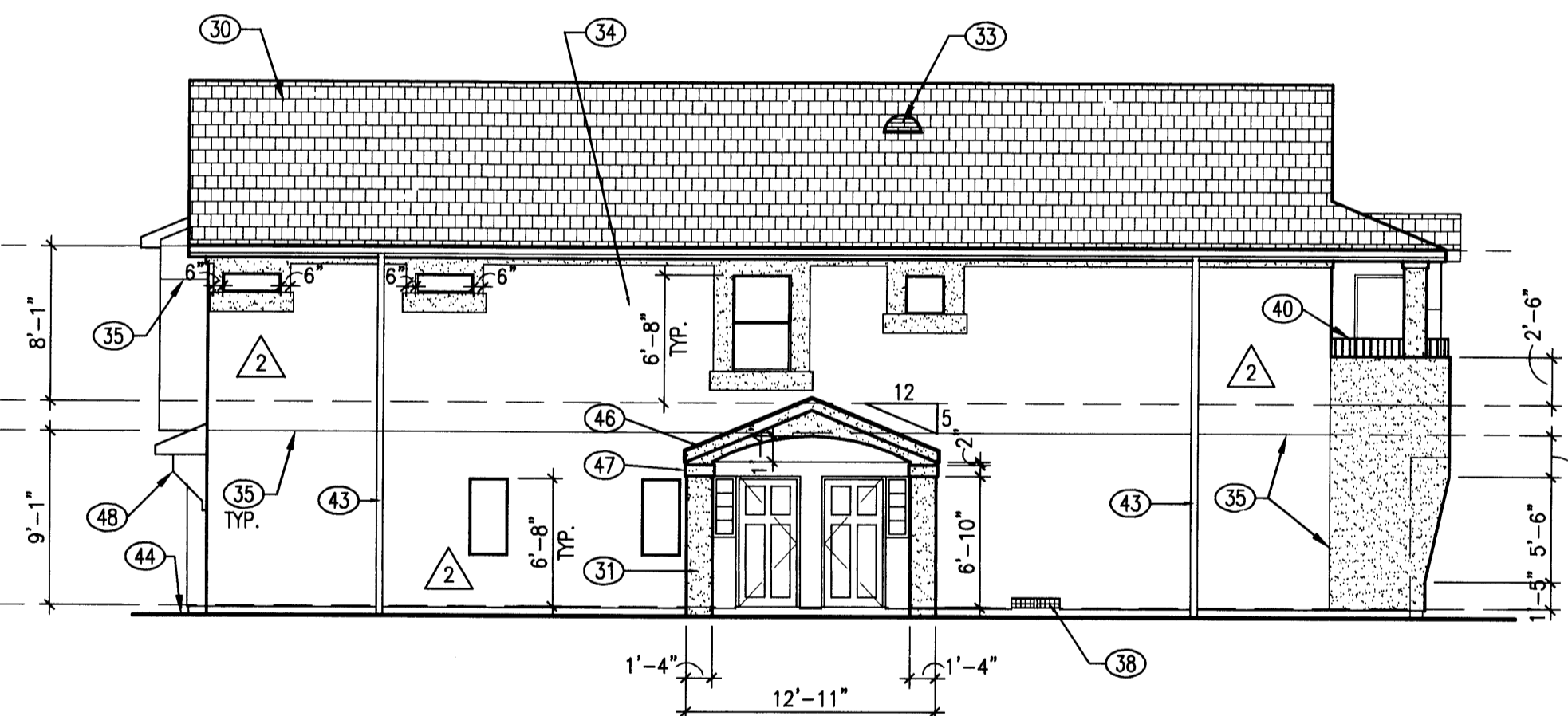
C2 'B' FRONT ELEVATION
SCALE: 1/8" = 1'-0"



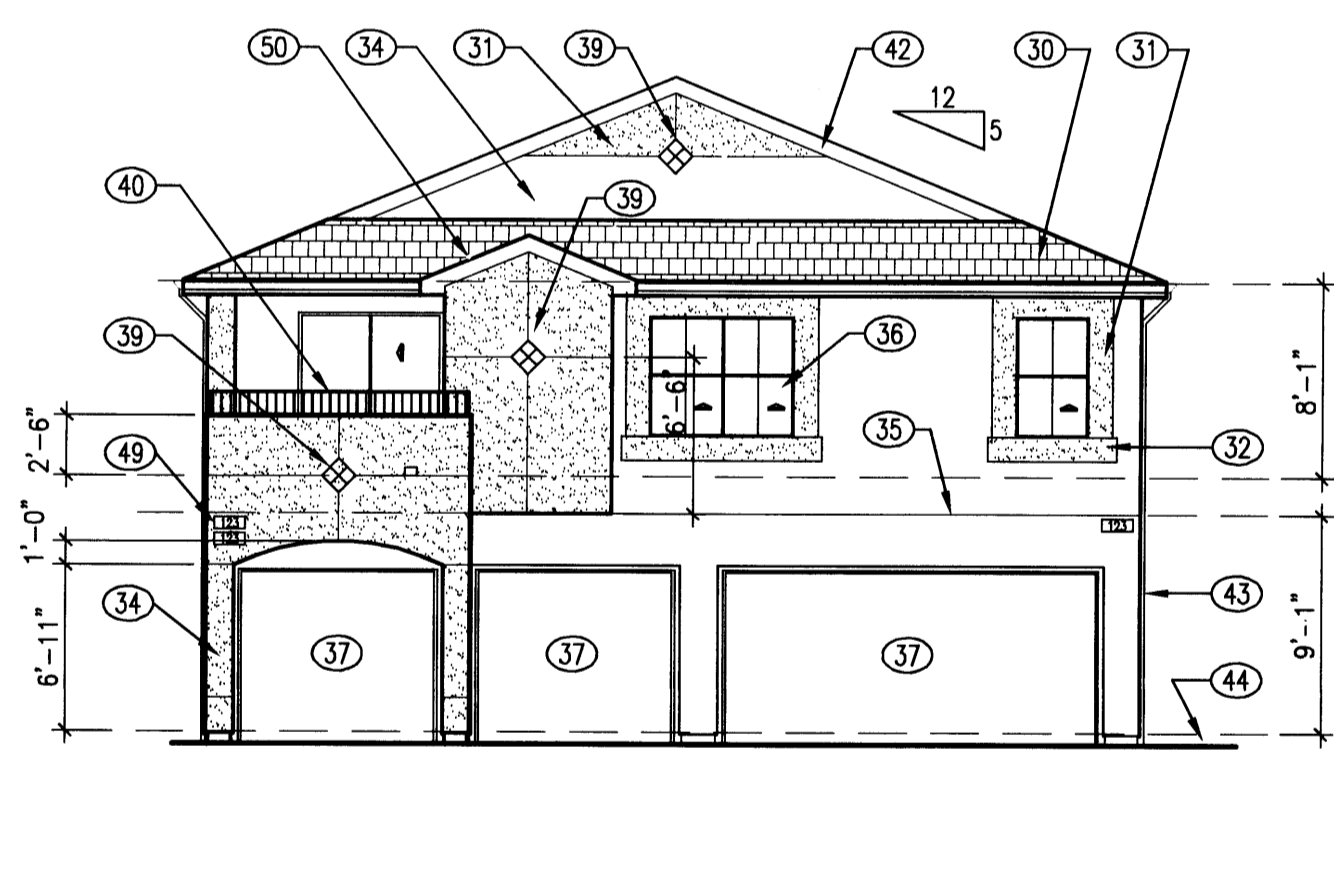
C3 'B' RIGHT SIDE ELEVATION
SCALE: 1/8" = 1'-0"



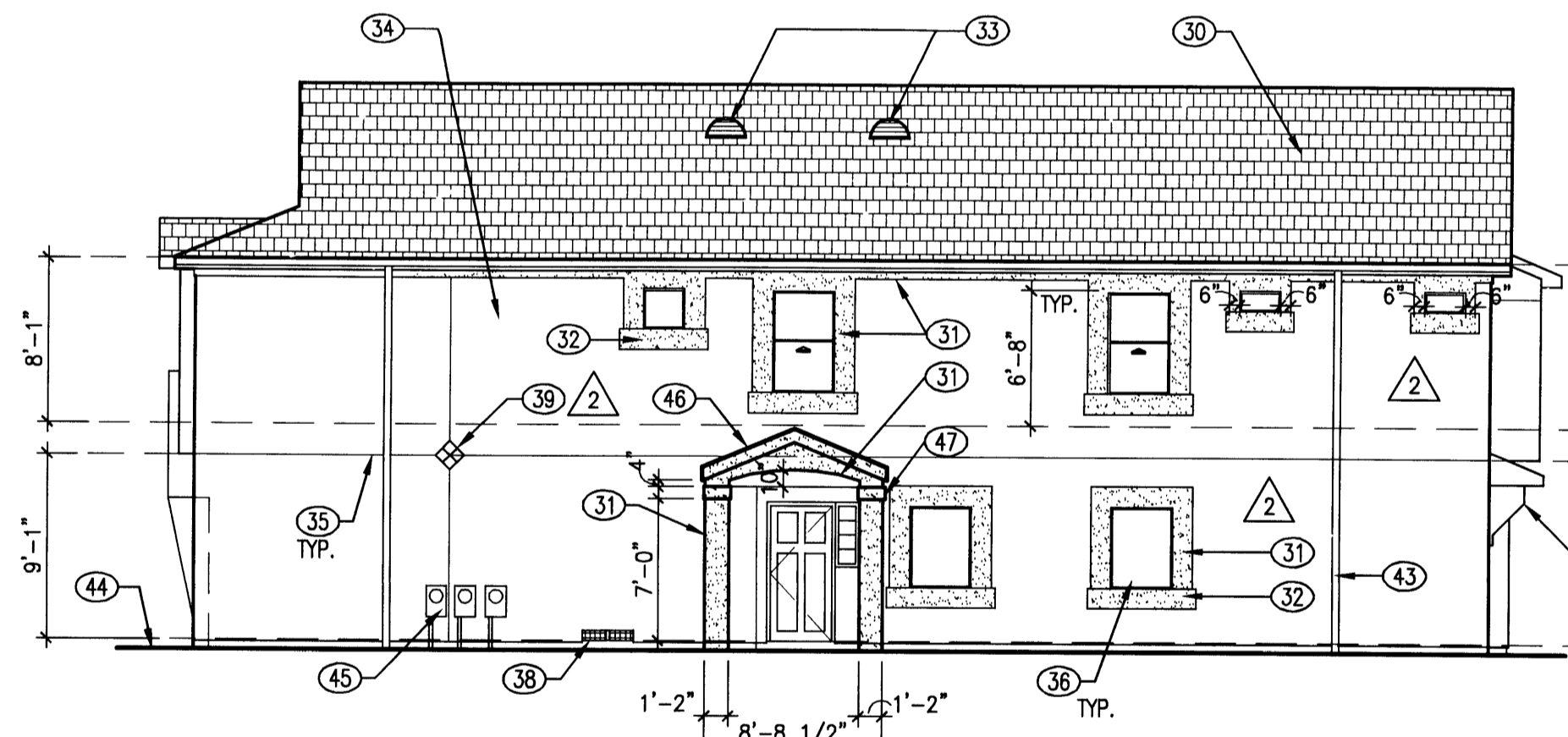
C4 'B' REAR ELEVATION
SCALE: 1/8" = 1'-0"



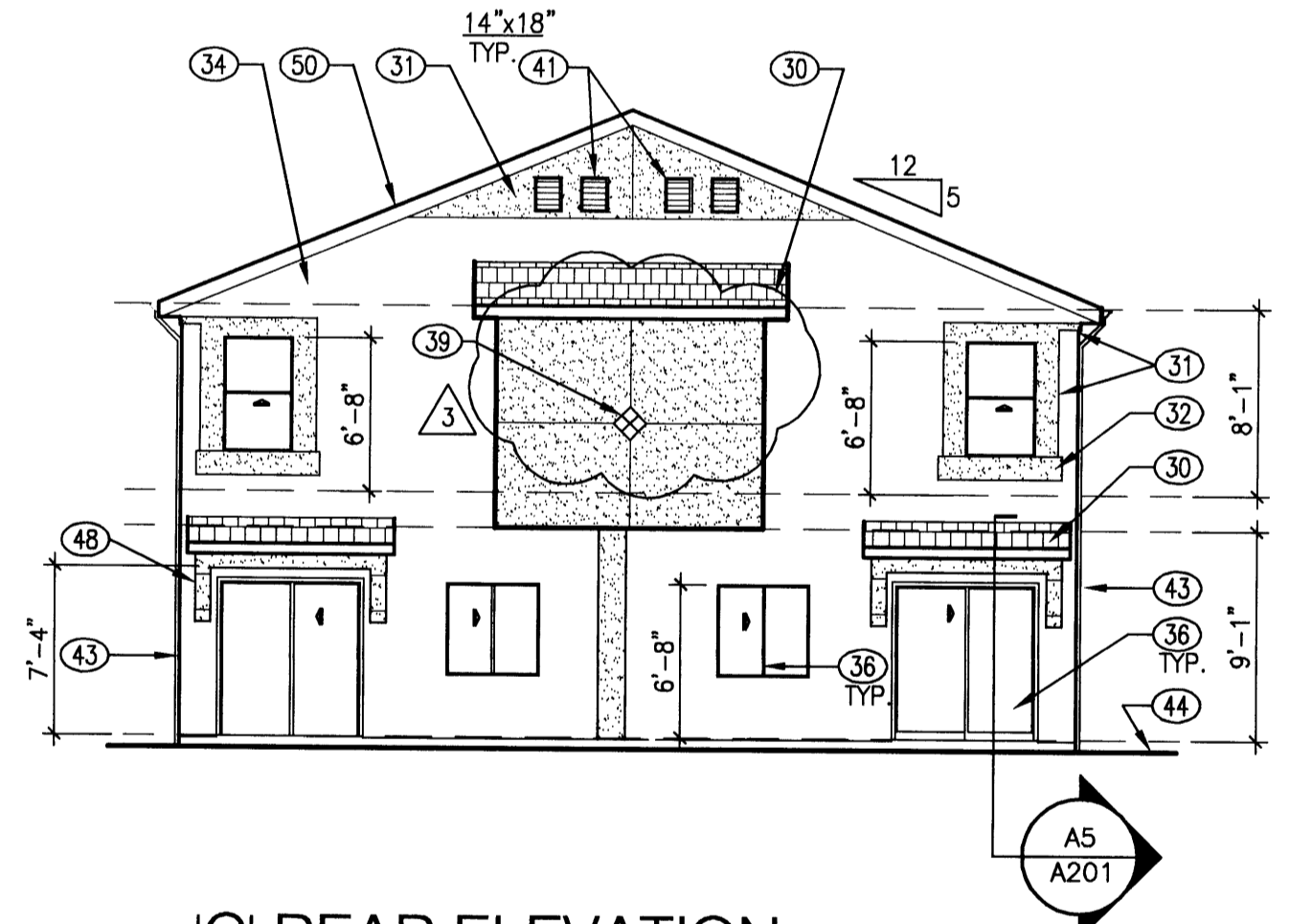
B1 'C' LEFT SIDE ELEVATION
SCALE: 1/8" = 1'-0"



B2 'C' FRONT ELEVATION
SCALE: 1/8" = 1'-0"



B3 'C' RIGHT SIDE ELEVATION
SCALE: 1/8" = 1'-0"



B4 'C' REAR ELEVATION
SCALE: 1/8" = 1'-0"

GENERAL NOTES

- A. ALL STUCCO AND PAINTED SURFACE COLORS TO BE RETURNED TO INSIDE CORNERS TYPICAL, UNLESS OTHERWISE NOTED. ANY UNUSUAL CONDITIONS TO BE CONFIRMED WITH ARCHITECT PRIOR TO FINAL COAT APPLICATION.
- B. DETAIL REFERENCES ARE TO BE USED FOR SIMILAR CONDITIONS WHETHER REFERENCED OR NOT.

KEYED NOTES

- 30. COMPOSITION ASPHALT SHINGLES, "ELK PRESTIGE" OR EQUAL.
- 31. STUCCO OVER 1" FOAM FURR OUT, REFER DTL. B4/A901.
- 32. STUCCO OVER FOAM 2X12 FURR OUT. REFER DTL. B4/A901.
- 33. DORMER VENT, SIZE PER ATTIC VENTILATION CALCS. GALVANIZED METAL, SHOP PRIMED FOR FIELD FINISH, REFER DTL. C4/A201.
- 34. EXTERIOR CEMENT STUCCO.
- 35. STUCCO CONTROL JOINT, REFER DTL. B1/A901.
- 36. WINDOWS AND SLIDING DOORS.
- 37. GARAGE DOOR, STEEL SECTIONAL.
- 38. (2) 14"x18" GARAGE VENTS.
- 39. CERAMIC TILE ACCENT - 6x6.
- 40. RAILING OF PAINTED STEEL.
- 41. GALVANIZED METAL ATTIC VENT, SIZE VARIES AS NOTED.
- 42. ZERO OVERHANG RACK. REFER DTL. A6/A201.
- 43. ALUMINUM GUTTER AND DOWN SPOUT CONNECTED TO SUBSURFACE DRAINAGE SYSTEM. REFER TO CIVIL ENGINEERING AND LANDSCAPE DRAWINGS.
- 44. FINISH GRADE, SLOPE AWAY FROM BUILDING, MIN. 2% SLOPE.
- 45. ELECTRIC METER, REFER IO E001.
- 46. STUCCO OVER DOUBLE WOOD 2X8 FURR OUT. REFER DTL. B4/A901.
- 47. STUCCO OVER FOAM 2X8 FURR OUT. REFER DTL. B4/A901.
- 48. "CORBEL" OF EXTERIOR STUCCO OVER WOOD 2X FURR OUT, REFER DTL. A5/A201.
- 49. ADDRESS PLAQUES.
- 50. 12" OVERHANG. REFER DTL. B2/A201.
- 51. STUCCO OVER FOAM 2X8 FURR OUT. REFER DTL. B4/A901.

THE DESIGN GROUP
ARCHITECTS • PLANNERS • INTERIOR DESIGN
105 CENTRAL AVENUE, SUITE 300
ALBUQUERQUE, NEW MEXICO 87102
PHONE: 505.242.1880 FAX: 505.242.1881

PROJECT NAME:	
RANCHO ENCANTADO CONDOMINIUMS	
D. R. Horton Homes	
Albuquerque, New Mexico	
REVISIONS	
No.	DATE DESCRIPTION
1	5/24/04 OWNER REVISIONS
2	6/17/04 OWNER REVISIONS

SHEET TITLE:
Exterior Elevations

DESIGNED: JMG	SCALE: 1/4" = 1'-0"
CHECKED: DM	JOB NO: 2235
DATE: 11/26/03	COMP. FILE: 2235-A102.rvt

A102

GENERAL NOTES

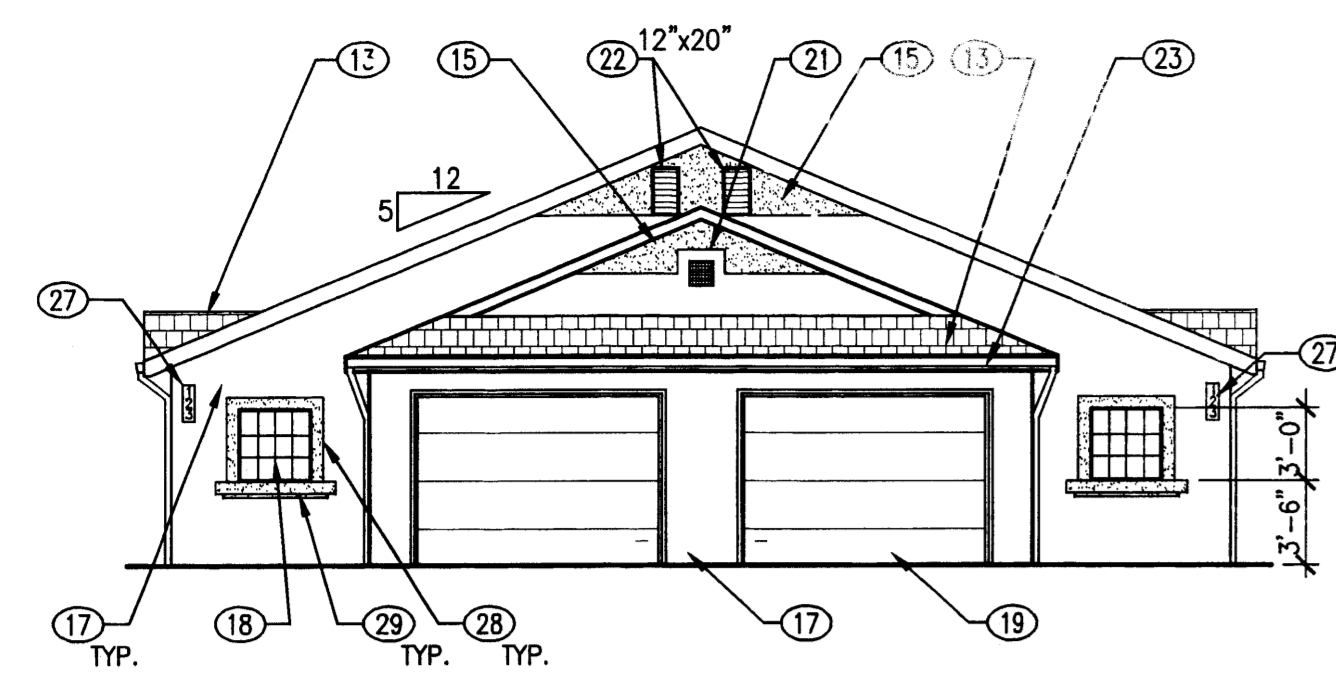
- OPERABLE PARTS ON ALL OPERABLE WINDOWS AND SLIDING GLASS DOORS SHALL BE OPERABLE WITH ONE HAND AND SHALL NOT REQUIRE TIGHT GRASPING, PINCHING OR TWISTING OF THE WRIST. THE FORCE REQUIRED TO ACTIVATE OPERABLE PARTS SHALL BE FIVE POUNDS MAXIMUM.

KEYED NOTES

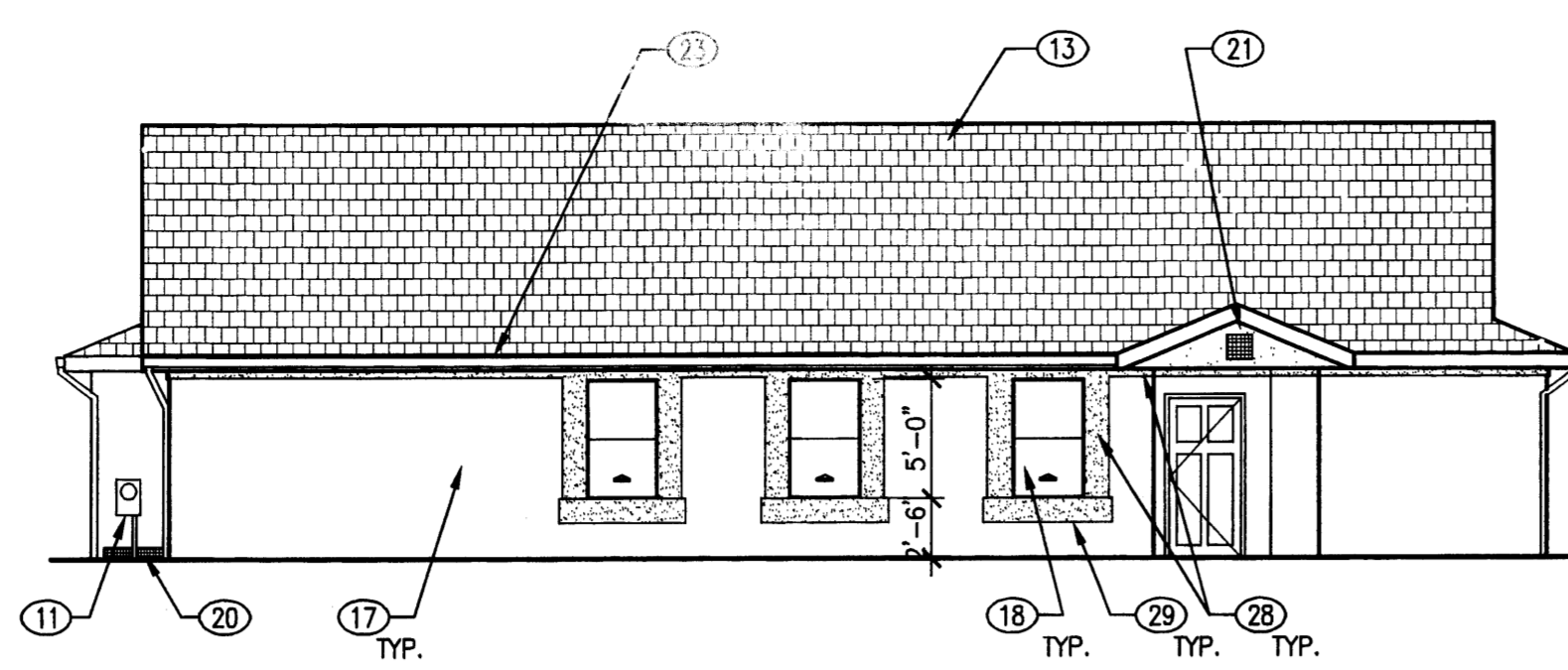
- AIR CONDITIONING CONDENSER
- PREFABRICATED ELECTRICAL FIREPLACE: OPTIONAL
- PROVIDE SLOPE TO ENTRY, NOT TO EXCEED 1:20
- PROVIDE REINFORCING IN WALLS TO PERMIT INSTALLATION OF GRAB BARS
- WALL MOUNTED SINK, COORDINATE WITH KEYED NOTE 24
- PROVIDE RECESSED HOSE CONNECTION BOX IN REAR WALL, REFER DETAIL: B2/A902
- WISHER
- DRYER: VENTED TO EXTERIOR
- ATTIC ACCESS HATCH 22 1/2" X 30"
- GARAGE MAN DOOR: 20 MINUTE FIRE-RATED DOOR AND FRAME ASSEMBLY WITH SELF CLOSING DEVICE, ALUMINUM THRESHOLD, VINYL GASKET AT DOOR BOTTOM AND FULL WEATHERPROOFING
- ELECTRIC METER
- CLOSET ROD AND SHELF ASSEMBLY, ONE ROD, ONE SHELF
- COMPOSITION ASPHALT SHINGLES - "ELK, PRESTIGE"
- CLOSET ROD AND SHELF ASSEMBLY, TWO RODS, TWO SHELVES
- STUCCO OVER 3/4" PLYWOOD FURR OUT.
- STUCCO OVER WOOD 2X FURR OUT.
- EXTERIOR CEMENT STUCCO
- ALUMINUM FRAME WINDOWS AND SLIDING DOORS
- GARAGE DOOR - STEEL SECTIONAL
- (2) 14"x6" GARAGE VENTS
- CERAMIC TILE ACCENT
- GALVANIZED METAL ATTIC VENT, SIZE VARIES AS NOTED
- ALUMINUM GUTTER AND DOWNSPOUT CONNECTED TO SUBSURFACE DRAINAGE SYSTEM. REFER TO CIVIL ENGINEERING AND LANDSCAPE DRAWINGS FOR FURTHER INFO.
- CABINERY SHALL BE PERMITTED TO BE ADDED UNDER THE SINK OR LAVATORY, PROVIDED SUCH CABINERY CAN BE REMOVED WITHOUT REMOVAL OR REPLACEMENT OF THE SINK OR LAVATORY, AND PROVIDED THE FINISH FLOOR EXTENDS UNDER SUCH CABINERY.
- PROVIDE AUTOMATIC GARAGE DOOR AT ALL HANDICAP UNITS
- ADDRESS PLAQUES
- STUCCO OVER DOUBLE WOOD 2X8 FURR OUT. REFER DET. B4/A901
- STUCCO OVER WOOD 2X8 FURR OUT. REFER DET. B4/A901

WALL / PARTITION ASSEMBLIES

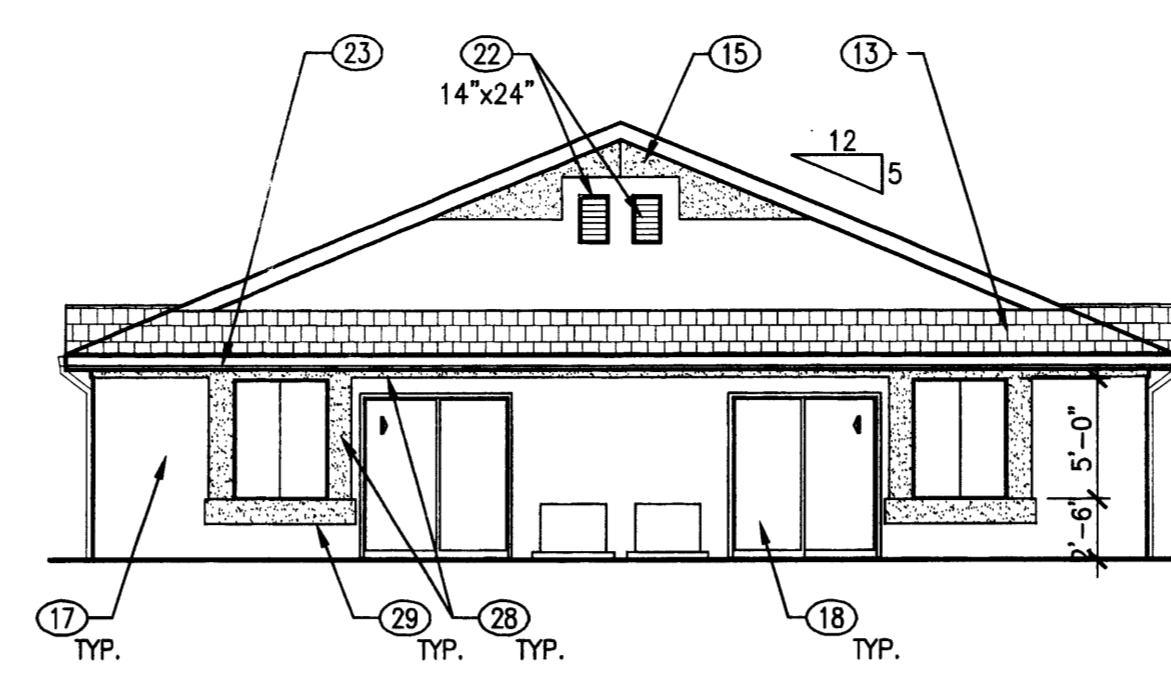
- EXTERIOR WALL (LOAD BEARING): SYNTHETIC STUCCO FINISH ON 3/8" FIBER REINFORCED STUCCO ON 1" 20 GA. METAL LATH ON 2 LAYERS 1/2" BLDG. PAPER ON 1/2" ASPHALT IMPREGATED SHEATHING 1/2" CDX PLYWOOD @ CORNERS AND @ 25' O.C. ON 2X STUDS @ 16" O.C., W/ 3-1/2" R-13 KRAFT FACED BATT INSULATION, 5/8" GYP. BD. ON INTERIOR.
- PARTITION: ONE LAYER 1/2" GYP. BD. BOTH SIDES OF 2X4 STUDS @ 16" O.C. MAX. NOTE: PROVIDE 3-1/2" BATT INSULATION @ WALLS BETWEEN BATHROOM AND BEDROOM.
- ONE HOUR FIRE RATED PARTITION (LOAD BEARING): ONE LAYER 5/8" TYPE "X" GYP. BD. BOTH SIDES OF 2X4 STUDS @ 16" O.C. MAX. CONTINUOUS TO BOTTOM OF ROOF DECK. UL FILE NO. L505, STC 56. NOTE: PROVIDE THIS P2 TYPE PARTITION @ ALL DUCT SHAFTS, TYP.
- PARTITION: ONE LAYER 5/8" TYPE "X" GYP. BD. (WATER RESISTANT GYP. BD. WHERE TUB/SHOWER INSTALLED) ONE SIDE OF 2X4 OR 2X6 STUDS @ 16" O.C. MAX. NOTE: PROVIDE 5-1/2" BATT INSUL. BETWEEN UNITS.
- 2 HOUR FIRE RATING, DOUBLE LAYER 5/8" TYPE "X" GYP. ON 2 ROWS 2X4 OR 2X6 STUDS (WHERE NOTED) AT 16" O.C. ON SEPARATE PLATES 3" APART. STAGGER VERTICAL JOINTS, PERIMETER CAULKED, JOINTS FINISHED. FIRE RATING PER GA FILE NO. WP 3820. STC RATING PER WP 3820 STD. OF 55-58.



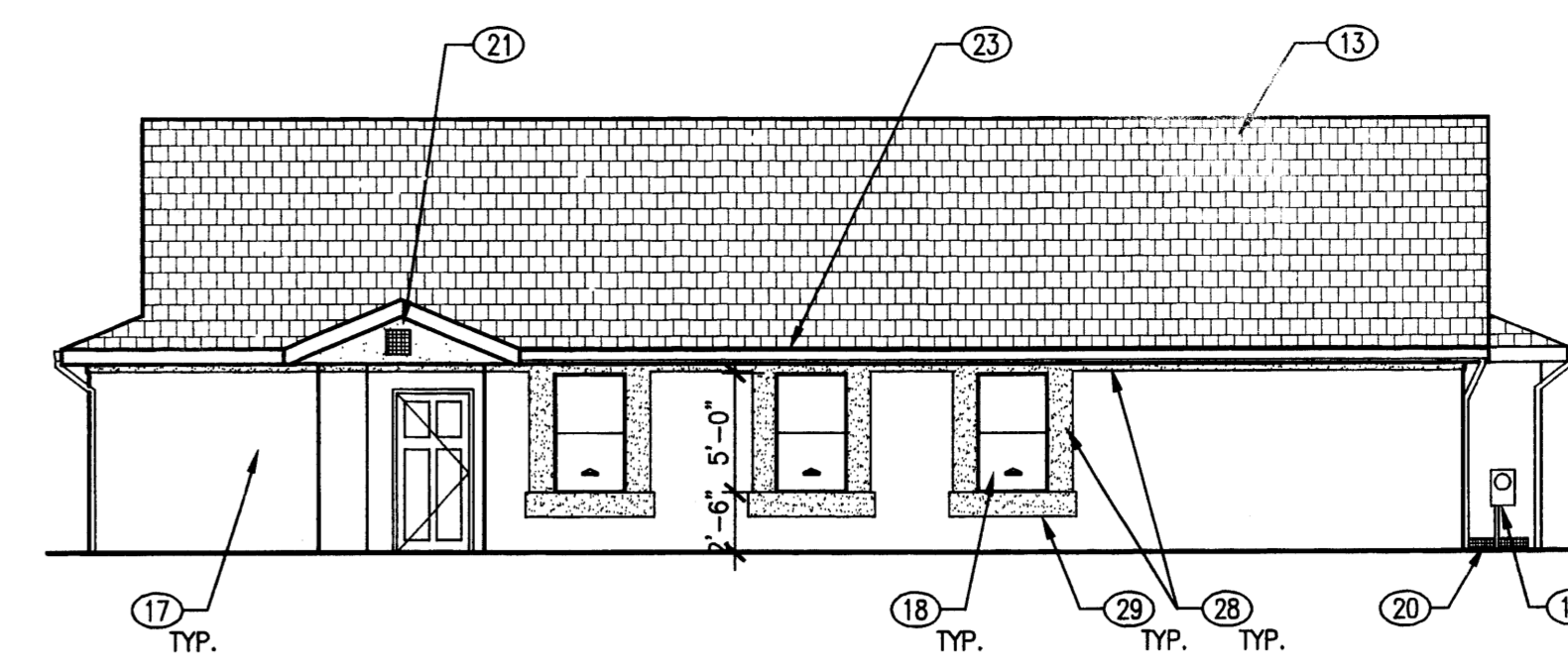
Front Elevation



Side Elevation



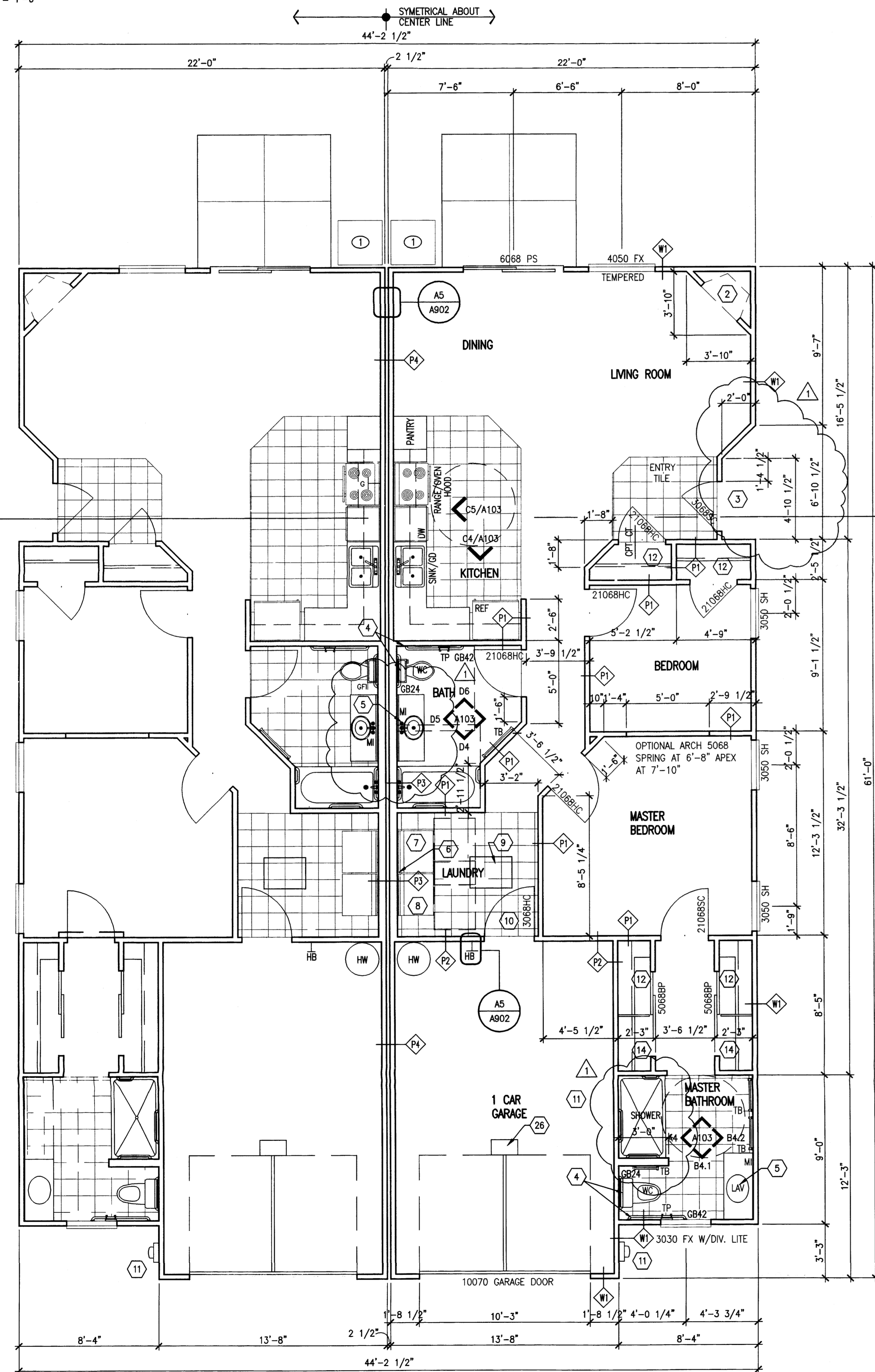
Rear Elevation



Side Elevation

E1 ELEVATIONS - HANDICAP UNIT

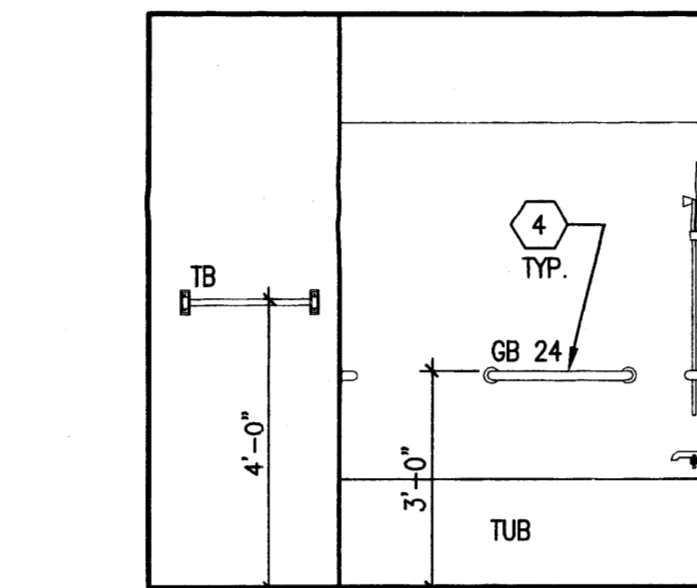
SCALE: 1/8" = 1'-0"



[FLRPLN7.DWG]

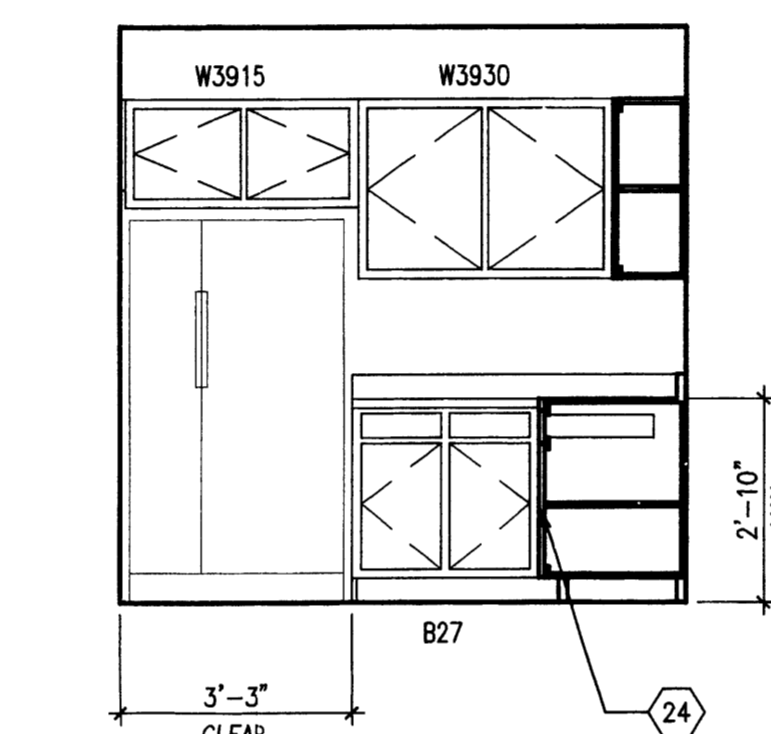
A1 'A' SECOND FLOOR PLAN

SCALE: 1/4" = 1'-0"



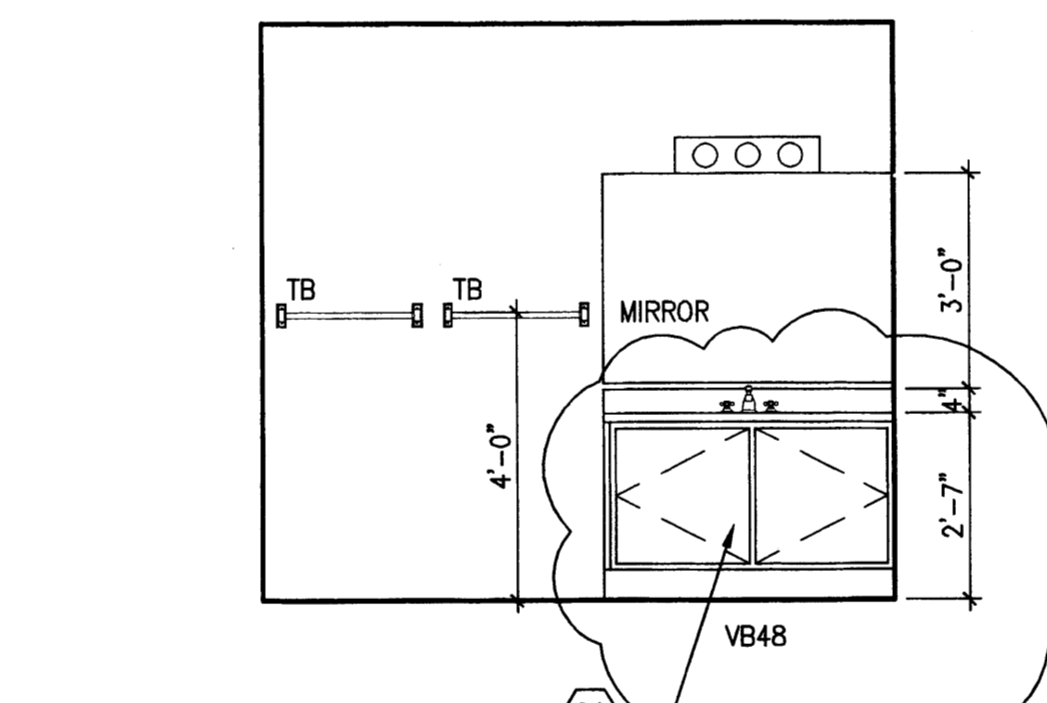
D4 ELEVATION

SCALE: 3/8" = 1'-0"



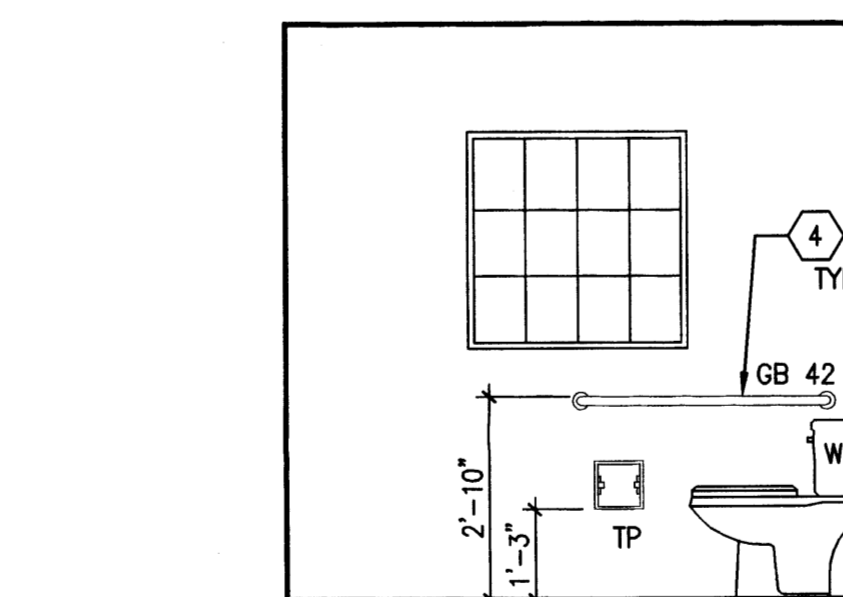
C4 ELEVATION

SCALE: 3/8" = 1'-0"



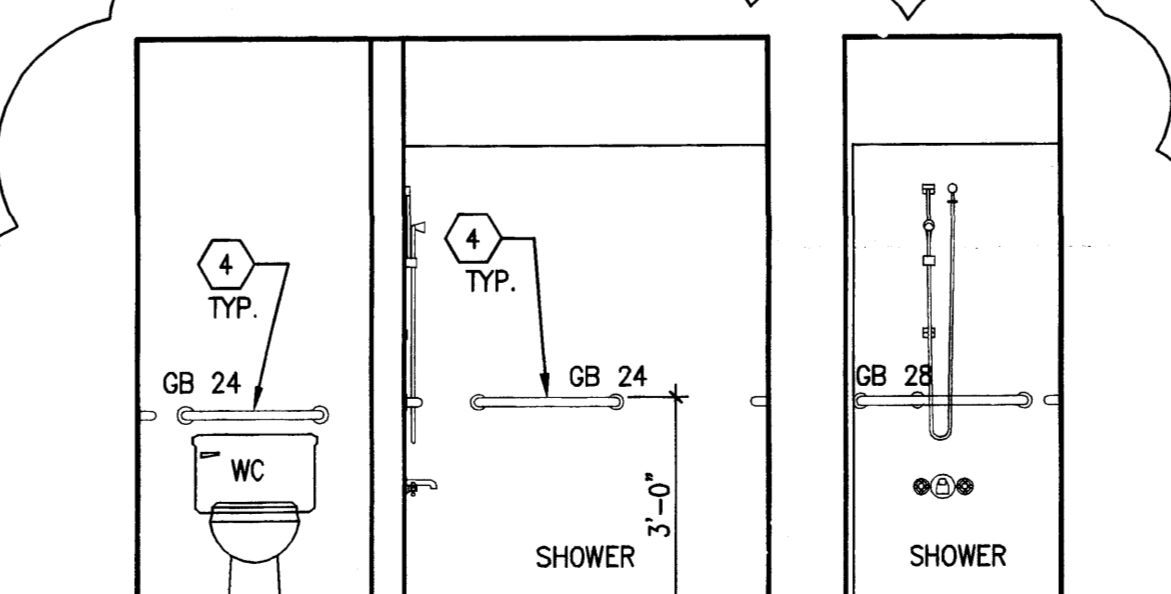
B4.2 ELEVATION

SCALE: 3/8" = 1'-0"



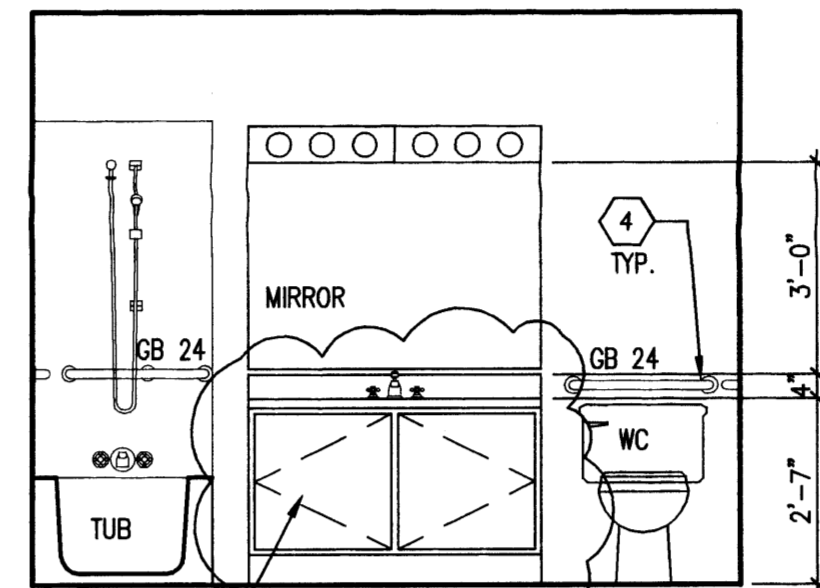
B4.1 ELEVATION

SCALE: 3/8" = 1'-0"



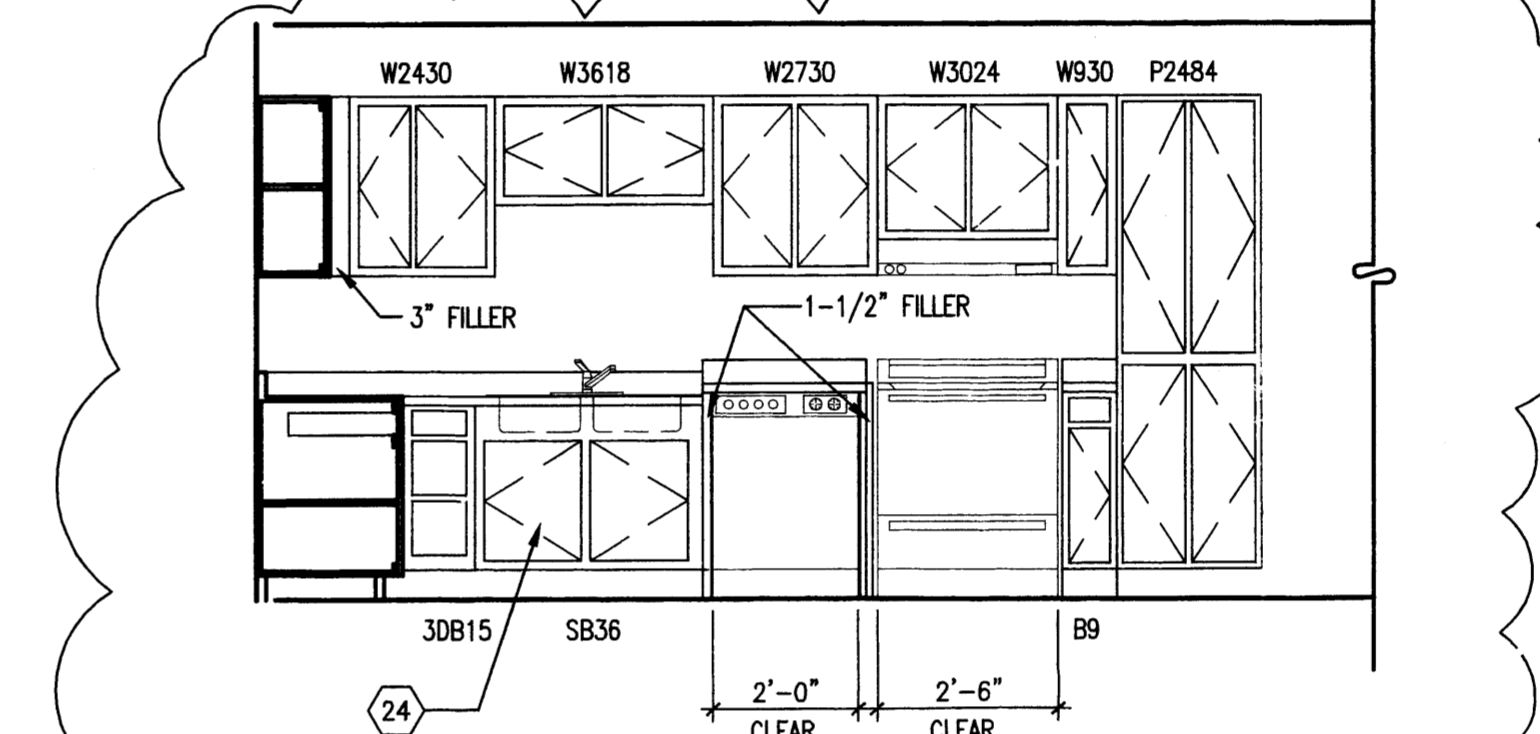
A4 ELEVATION

SCALE: 3/8" = 1'-0"



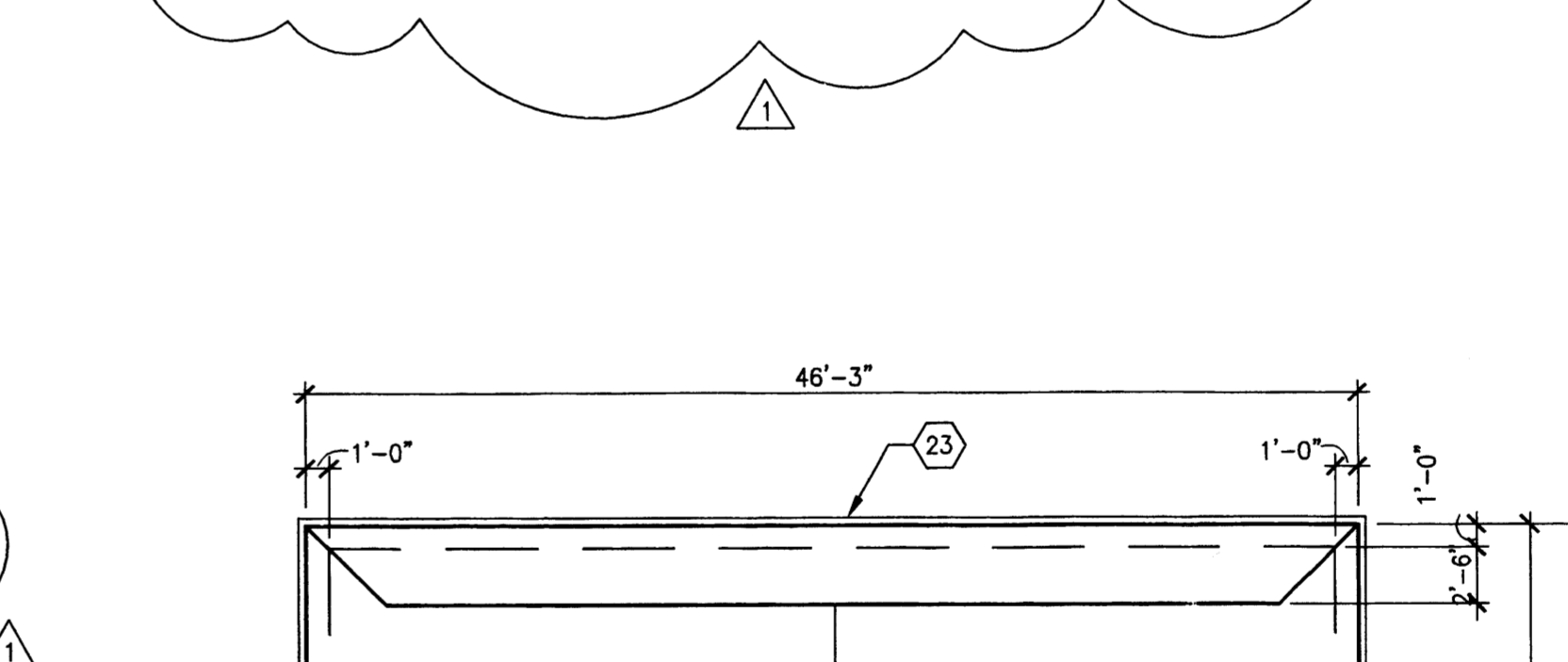
D5 ELEVATION

SCALE: 3/8" = 1'-0"



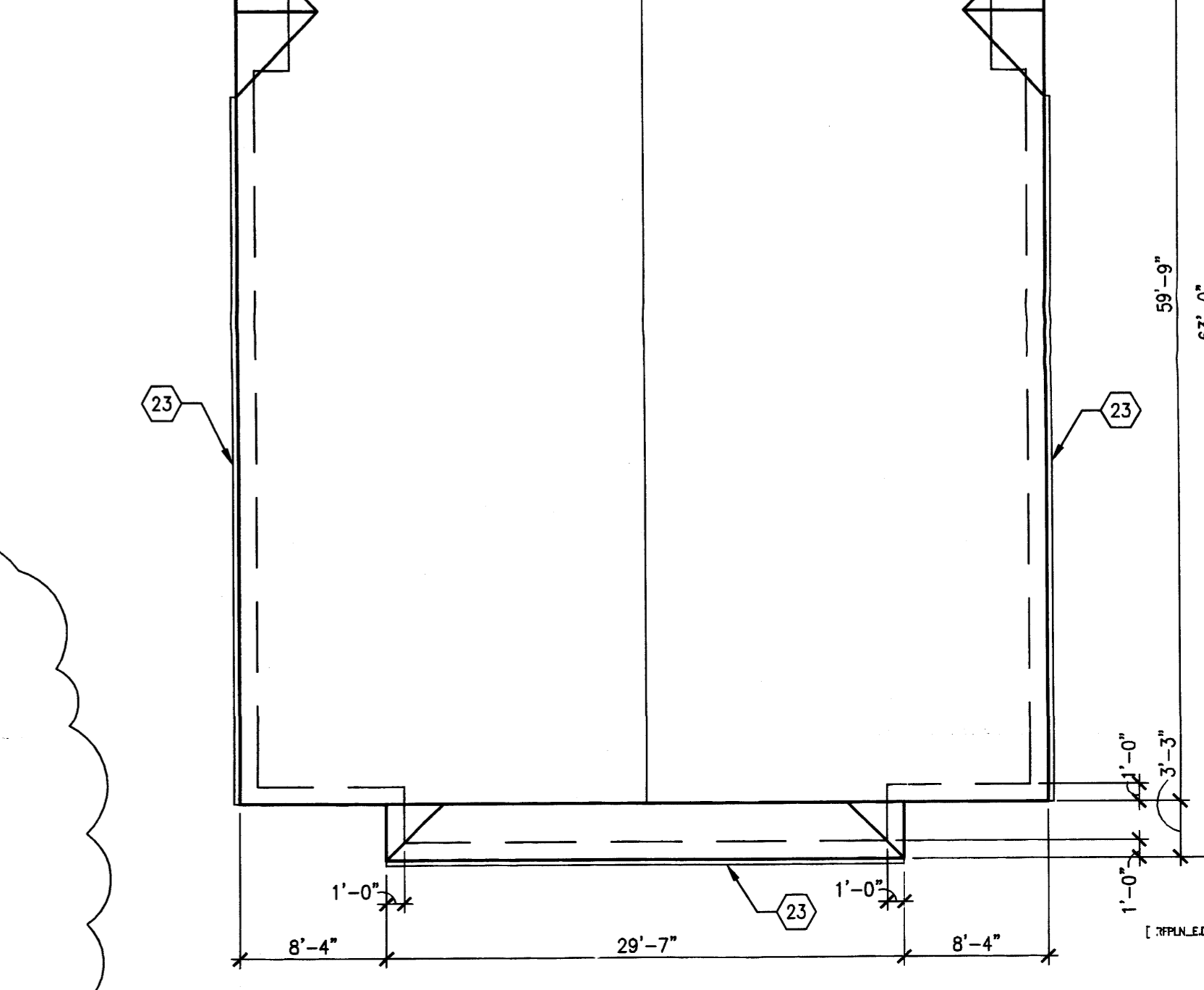
C5 ELEVATION

SCALE: 3/8" = 1'-0"



B4.2 ELEVATION

SCALE: 3/8" = 1'-0"



A5 ROOF PLAN - HANDICAP UNIT

SCALE: 1/8" = 1'-0"



PROJECT NAME:
RANCHO ENCANTADO CONDOMINIUMS
D. R. Horton Homes
Albuquerque, New Mexico

NO.	DATE	DESCRIPTION
1	2/6/04	CITY REVIEW COMMENTS

SHEET TITLE:
Handicap
Floor Plan, Elevations
Roof Plan

DESIGNED BY	SCALE	1/4" = 1'-0"
JMG		
CHECKED BY	DATE	JOB NO.
DM	10/31/03	2235
DATE	COMP. FILED	2235-A103
10/31/03		

A103