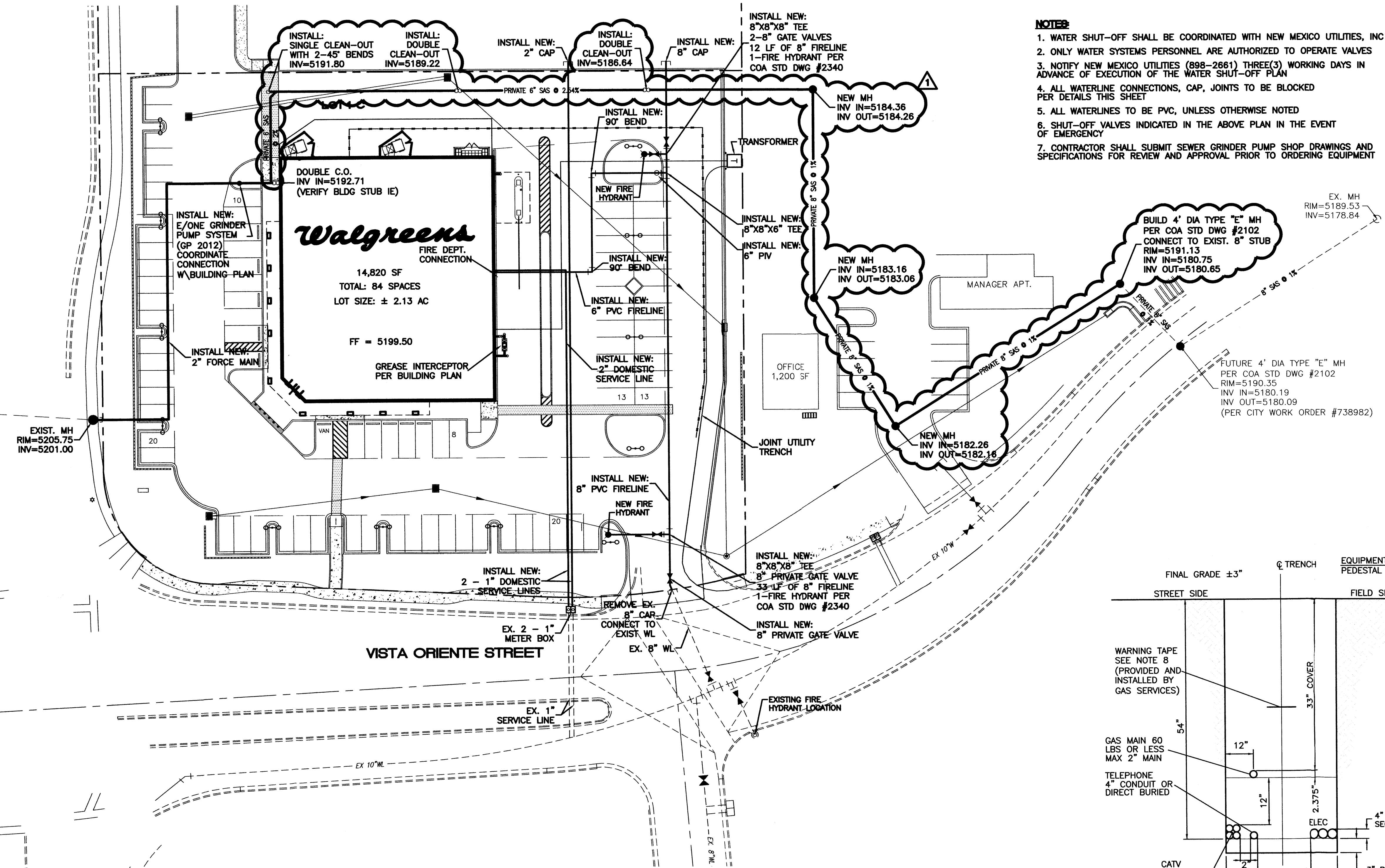
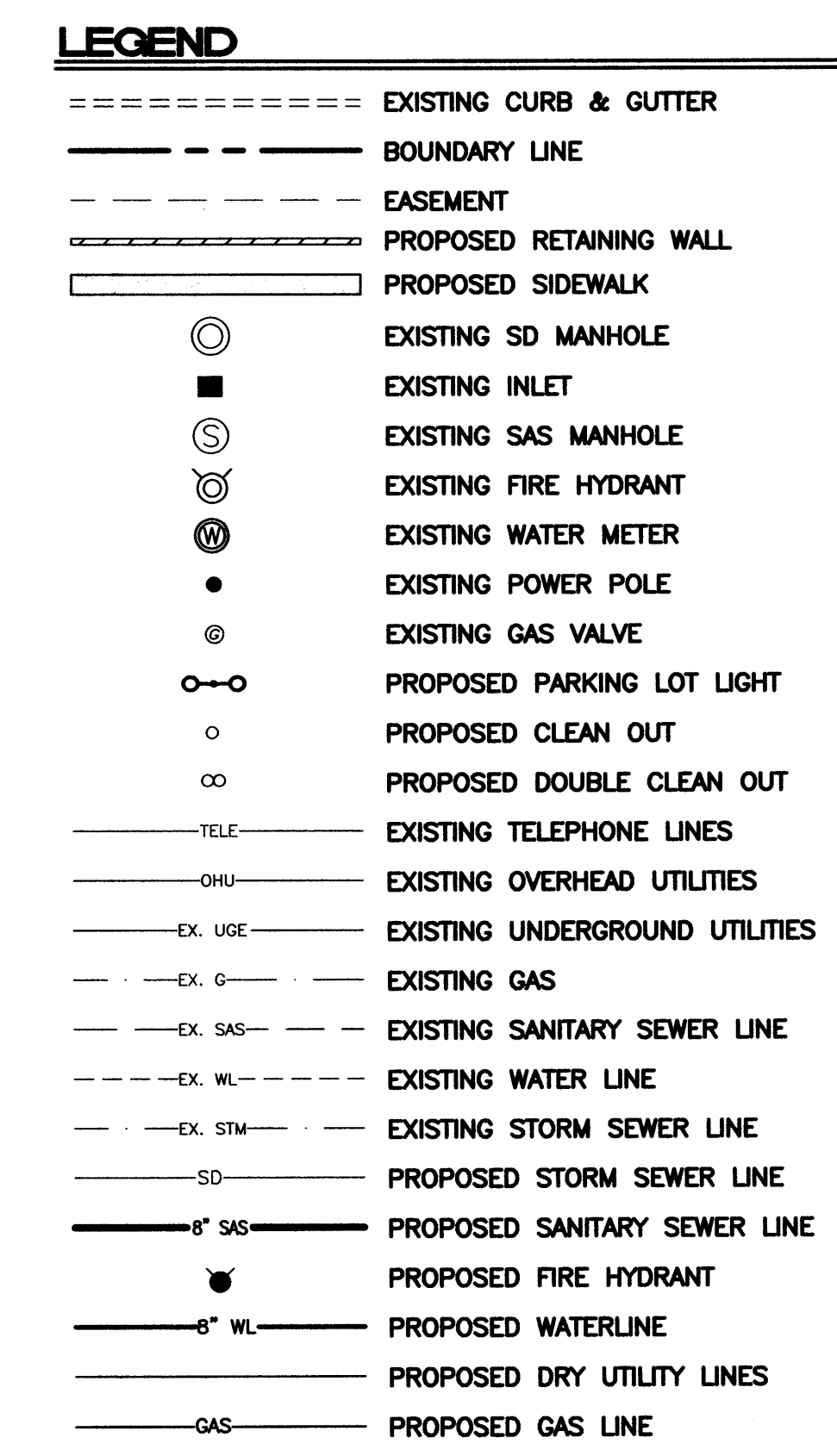


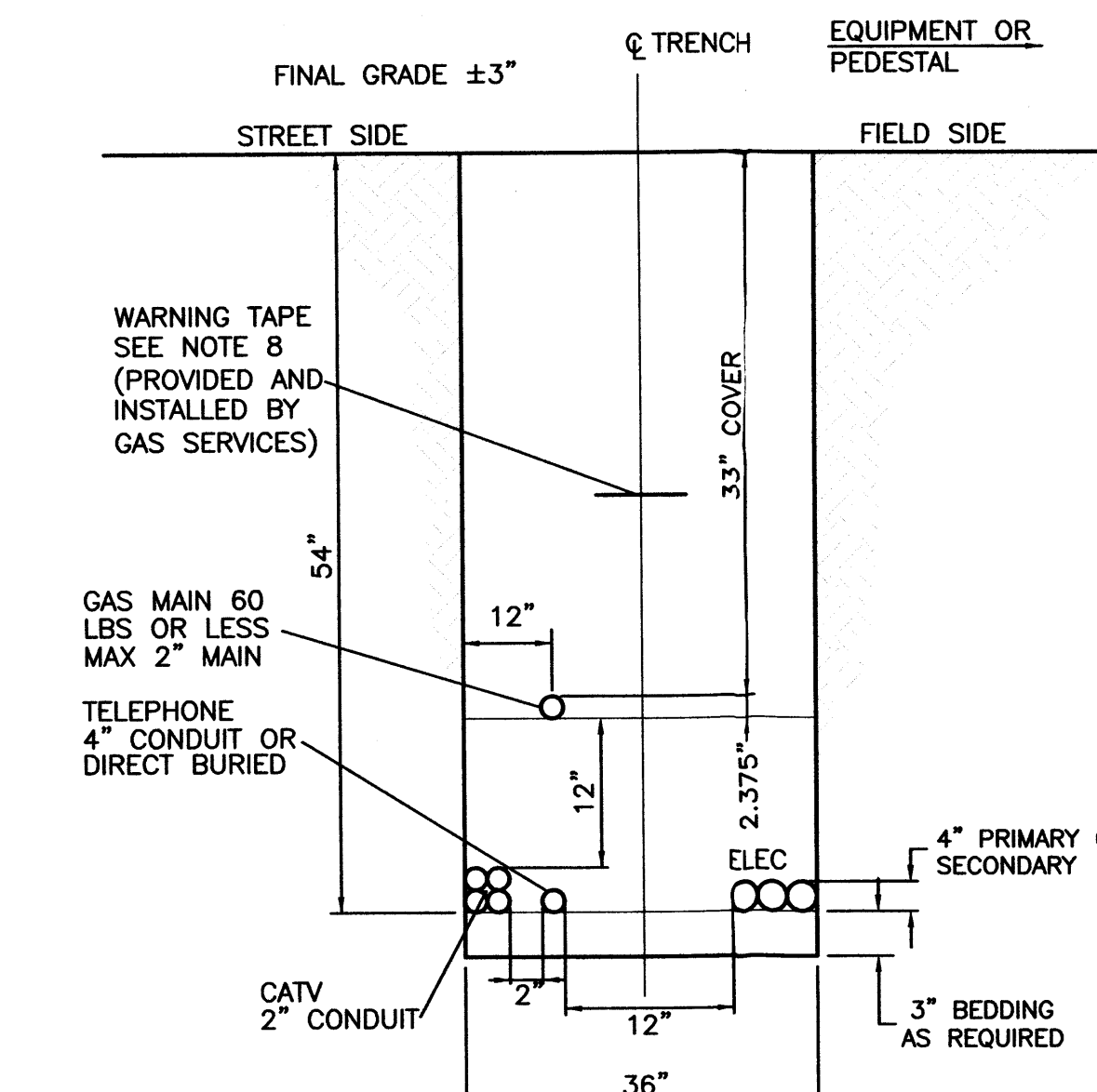
UNSER BOULEVARD



- NOTES:**
1. WATER SHUT-OFF SHALL BE COORDINATED WITH NEW MEXICO UTILITIES, INC
  2. ONLY WATER SYSTEMS PERSONNEL ARE AUTHORIZED TO OPERATE VALVES
  3. NOTIFY NEW MEXICO UTILITIES (888-2681) THREE(3) WORKING DAYS IN ADVANCE OF EXECUTION OF THE WATER SHUT-OFF PLAN
  4. ALL WATERLINE CONNECTIONS, CAP, JOINTS TO BE BLOCKED PER DETAILS THIS SHEET
  5. ALL WATERLINES TO BE PVC, UNLESS OTHERWISE NOTED
  6. SHUT-OFF VALVES INDICATED IN THE ABOVE PLAN IN THE EVENT OF EMERGENCY
  7. CONTRACTOR SHALL SUBMIT SEWER GRINDER PUMP SHOP DRAWINGS AND SPECIFICATIONS FOR REVIEW AND APPROVAL PRIOR TO ORDERING EQUIPMENT



- GENERAL NOTES**
1. COMPACTION IN CITY OR STATE RIGHT-OF-WAYS SHALL MEET OR EXCEED MINIMUM SPECIFIED REQUIREMENTS
  2. SHADING AND BEDDING MATERIAL TO BE TYPE IV, CLASS 1 FOR DIRECT BURIED CABLE AND TYPE IV, CLASS 2 FOR CABLE IN CONDUIT. TYPE III MATERIAL IS SUITABLE FOR EITHER TYPE OF INSTALLATION. REFER TO DS-10-12.4 FOR FILL MATERIAL REQUIREMENTS.
  3. IF TRENCH-RUN MATERIAL MEETS BACK FILL MATERIAL TYPE REQUIREMENTS, 3" BEDDING MAY BE OMITTED PROVIDED THE TRENCH BOTTOM IS SMOOTH, FLAT AND WITHOUT SURFACE IRREGULARITIES.
  4. SEPARATION BETWEEN JACKETED PRIMARY AND COMMUNICATION CABLES SHALL BE AT LEAST 12".
  5. SPOIL PILE SHALL BE PLACED ON THE FIELD SIDE A MINIMUM OF 2' FROM TRENCH EDGE.
  6. WATER LINES SHALL MAINTAIN 12" MINIMUM HORIZONTAL SEPARATION FROM OTHER UTILITIES AND MAY BE INSTALLED EITHER ABOVE OR BELOW OTHER UTILITIES DEPENDING ON FREEZE DEPTH.
  7. LATEST OSHA TRENCH SAFETY REQUIREMENTS SHALL BE STRICTLY OBSERVED.
  8. WARNING TAPE SHALL BE PLACED A MINIMUM OF 12" ABOVE THE UPPER LEVEL OF UTILITIES AT THE CENTER OF TRENCH.
  9. WHEN BINGING CABLES TO PEDESTALS, 12" SEPARATION MUST BE MAINTAINED FROM THE GAS LINE.
  10. PNM OWNED OR MAINTAINED STREETLIGHT CIRCUITS MAY BE INSTALLED IN TRENCH NEXT TO ELECTRIC CABLES.
  11. PRIVATE AREA LIGHTING OR PRIVATE STREETLIGHT CIRCUITS MAY NOT BE IN JOINT TRENCH.
  12. GAS SERVICE MUST BE 12" AWAY FROM WHERE IT WILL PASS EQUIPMENT OR PEDESTALS.
- REFERENCES**
1. NESC RULE 352, 353, 354.

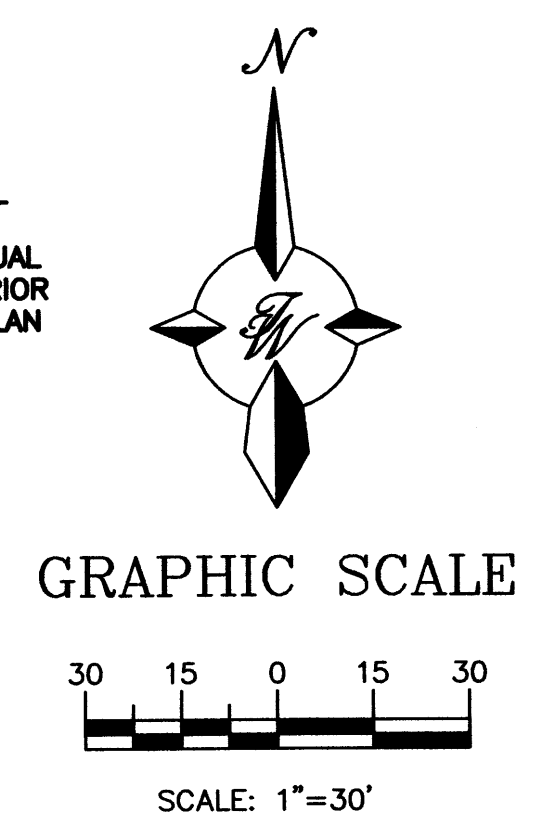


- NOTICE TO CONTRACTORS**
1. AN EXCAVATION/CONSTRUCTION PERMIT WILL BE REQUIRED BEFORE BEGINNING ANY WORK WITHIN CITY RIGHT-OF-WAY. AN APPROVED COPY OF THESE PLANS MUST BE SUBMITTED AT THE TIME OF APPLICATION FOR THIS PERMIT.
  2. ALL WORK DETAILED ON THESE PLANS TO BE PERFORMED, EXCEPT AS OTHERWISE STATED OR PROVIDED HEREON, SHALL BE CONSTRUCTED IN ACCORDANCE WITH STANDARDS OF NEW MEXICO UTILITIES INCORPORATED AND WITH CITY OF ALBUQUERQUE INTERIM STANDARD SPECIFICATIONS FOR PUBLIC WORKS CONSTRUCTION, 1985.
  3. TWO WORKING DAYS PRIOR TO ANY EXCAVATION, CONTRACTOR MUST CONTACT NEW MEXICO ONE CALL SYSTEM (260-1999), FOR LOCATION OF EXISTING UTILITIES.
  4. PRIOR TO CONSTRUCTION, THE CONTRACTOR SHALL EXCAVATE AND VERIFY THE HORIZONTAL AND VERTICAL LOCATIONS OF ALL CONSTRUCTIONS. SHOULD A CONFLICT EXIST, THE CONTRACTOR SHALL NOTIFY THE ENGINEER SO THAT THE CONFLICT CAN BE RESOLVED WITH A MINIMUM AMOUNT OF DELAY.
  5. BACKFILL COMPACTION SHALL BE ACCORDING TO RESIDENTIAL STREET USE.
  6. MAINTENANCE OF THOSE FACILITIES NOT WITHIN DEDICATED EASEMENTS SHALL BE THE RESPONSIBILITY OF THE OWNER OF THE PROPERTY SERVED.
  7. WORK ON ARTERIAL STREETS SHALL BE PERFORMED ON A 24-HOUR BASIS.
  8. CONTRACTOR IS RESPONSIBLE TO PROVIDE UTILITY STUBS 5' FROM BUILDING
  9. CONTRACTOR IS REQUIRED TO VERIFY INVERT AND LOCATIONS OF STORM DRAINS AND SANITARY SEWER AT SERVICE CROSSINGS AND CONNECTIONS AT START OF CONSTRUCTION. CONTRACTOR SHALL IMMEDIATELY NOTIFY ENGINEER OF DISCREPANCIES BETWEEN INVERT ELEVATIONS SHOWN ON THESE PLANS AND ACTUAL FIELD ELEVATIONS.

**NOTE:**  
BACKFLOW PREVENTOR FOR 6-INCH FIRE SERVICE TO BE LOCATED INSIDE THE BUILDING. PLEASE REFER TO ARCHITECTURAL PLANS FOR DETAILS.

**CAUTION:**  
ALL EXISTING UTILITIES SHOWN WERE OBTAINED FROM RESEARCH, AS-BUILTS, SURVEYS OR INFORMATION PROVIDED BY OTHERS. IT SHALL BE THE SOLE RESPONSIBILITY OF THE CONTRACTOR TO CONDUCT ALL NECESSARY FIELD INVESTIGATIONS PRIOR TO AND INCLUDING ANY EXCAVATION, TO DETERMINE THE ACTUAL LOCATION OF UTILITIES AND OTHER IMPROVEMENTS, PRIOR TO STARTING THE WORK. ANY CHANGES FROM THIS PLAN SHALL BE COORDINATED WITH AND APPROVED BY THE ENGINEER.

- GENERAL NOTES**
1. 4' MINIMUM BURY REQUIRED FOR ALL UTILITIES UNLESS OTHERWISE NOTED.
  2. REFERENCE ARCHITECTURAL PLANS FOR WATER LINE RISER LOCATIONS.
  3. CLEAN OUTS ARE TO BE BUILT PER UNIFORM PLUMBING CODE STANDARDS.
  4. CONTRACTOR TO USE FULL BLOCKING AT ALL TEES, ELBOWS, PLUGS & CAPS. SEE DETAIL THIS SHEET.
  5. ALL PIPE MATERIAL TO BE USED PER NM UTILITY, INC; (SDR-35 TYPICAL)
  6. CONTRACTOR TO PROVIDE CONDUITS FOR QWEST, COMCAST AND PNM; CONTRACTOR SHALL COORDINATE WITH APPROPRIATE CONTACTS FOR EACH.



**TYPICAL TRENCH DETAIL**  
NTS

DRB# 1002404		ADDED GRAVITY SEWER (FUTURE CONNECTIONS)		JH
1	8-22-07	REMARKS		BY
<b>REVISIONS</b>				
ENGINEER'S SEAL		<b>WALGREENS #09715</b>		DRAWN BY
		<b>98TH AND UNSER</b>		DATE
		<b>MASTER UTILITY PLAN</b>		6-20-07
		24086-MUB		SHEET #
		<b>TIERRA WEST, LLC</b>		<b>3</b>
		5571 MIDWAY PARK PLACE NE ALBUQUERQUE, NM 87109 (505) 858-3100		JOB #
RONALD R. BOHANNAN P.E. #7868				24086

PROJECT # 1002404