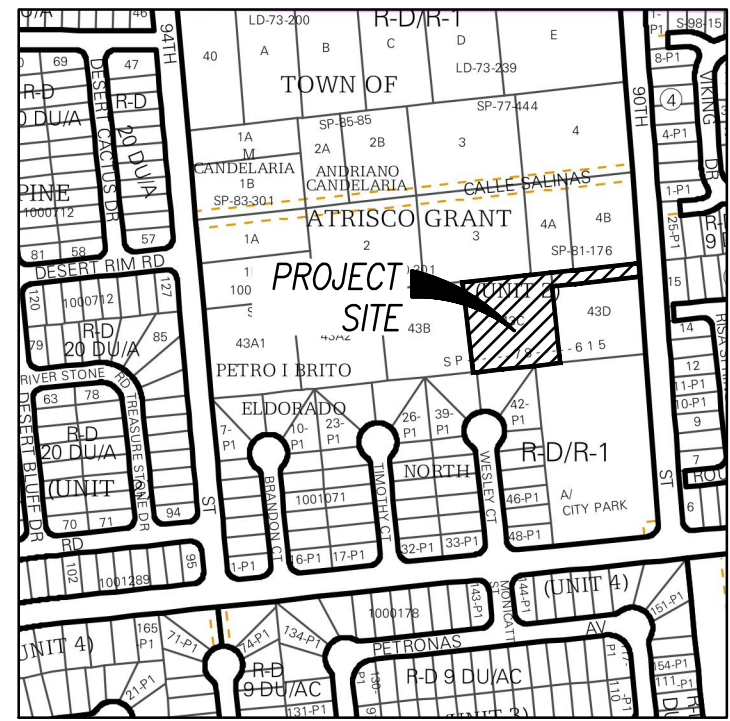


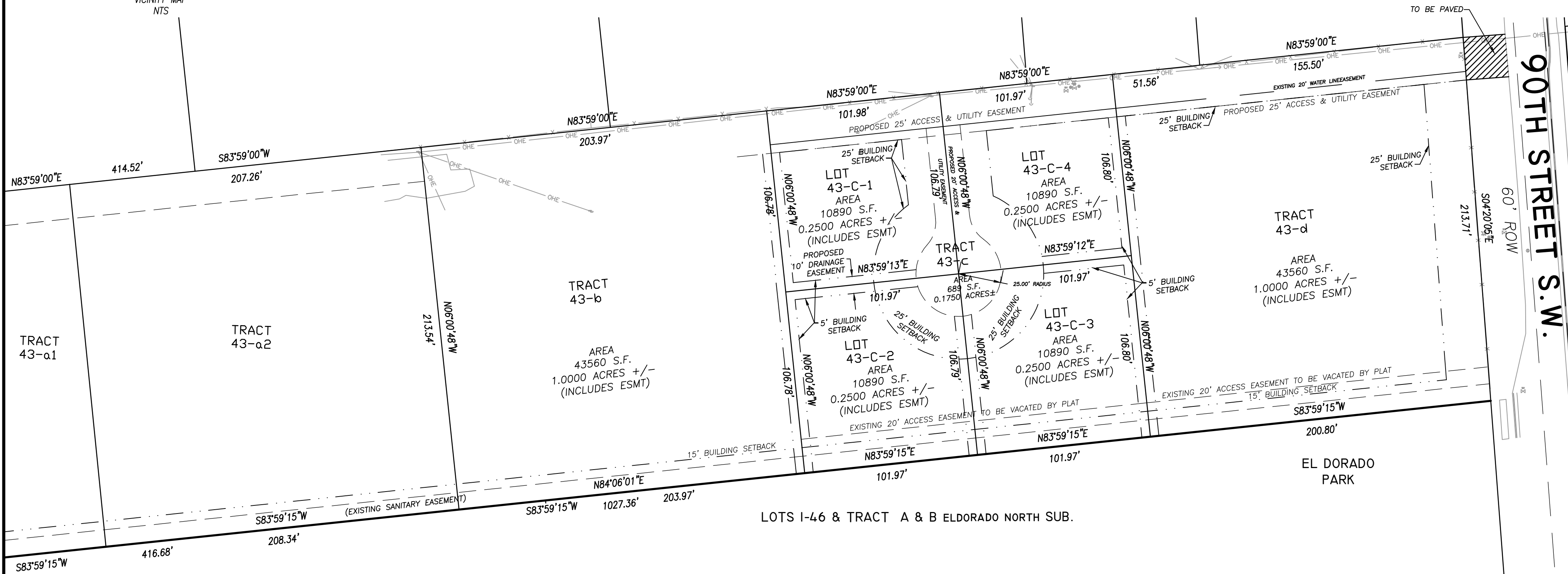
SKETCH PLAT TRACT 43-C, UNIT 2

TRACT 43-c, UNIT 2, A SUBDIVISION IN
BERNALILLO COUNTY, NEW MEXICO

TRACT 43-c OF CORRECTED PLAT OF DIVISION OF TRACT 43 UNIT 2, TOWN OF ATRISCO GRANT,
ALBUQUERQUE, BERNALILLO COUNTY, NEW MEXICO,
AS THE SAME AS SHOWN AND DESIGNATED ON THE MAP OF SAID SUBDIVISION,
FILED IN THE OFFICE OF THE COUNTY CLERK OF BERNALILLO COUNTY, NEW MEXICO,
ON JANUARY 19, 1988 IN VOL. B22, FOLIO 87.



VICINITY MAP
NTS



LEGEND

	FIRE HYDRANT
	WATER METER
	WATER VALVE
	SANITARY SEWER MH
	FENCE
	WATER LINE
	OVERHEAD ELECTRIC POWER POLE
	GUY WIRE

NOTE: ALL SYMBOLS MAY NOT BE PRESENT IN DRAWING.

GENERAL NOTES:

1. The existing easements shown hereon are from deeds, descriptions and the plat

SURVEYOR'S CERTIFICATION:

"I, LYNN D. LANTZ, New Mexico Professional Surveyor No. 10856 do hereby certify that this Plat of survey was prepared from field notes of an actual ground survey performed by me or under my supervision; that it accurately meets the Standards for Land Surveys in New Mexico as adopted by the New Mexico State Board of Registration for Professional Engineers and Professional Surveyors; that it is true and correct to the best of my knowledge and belief."

LYNN D. LANTZ, N.M.P.S. No. 10856



Date

Compass Land Surveying, LLC
8401 RANCHO VERANO COURT NW
ALBUQUERQUE, NEW MEXICO 87120
TELE: 505.274.1711 * FAX: 505.792.6959

Designed LDL	Drawn LDL	Checked LDL
Date: 11-10-2014		
Scale: Horiz: H=40 Vert: V=N/A		
Project No: 13G25-BNDY		
Sheet: 10F1		

GRAPHIC SCALE
1 inch = 40 ft.

PROPERTY ADDRESS:
TR. 43-C
432 94TH STREET S.W.
ALBUQUERQUE, N. M. 87121

JOB NUMBER: 13G25-BNDY