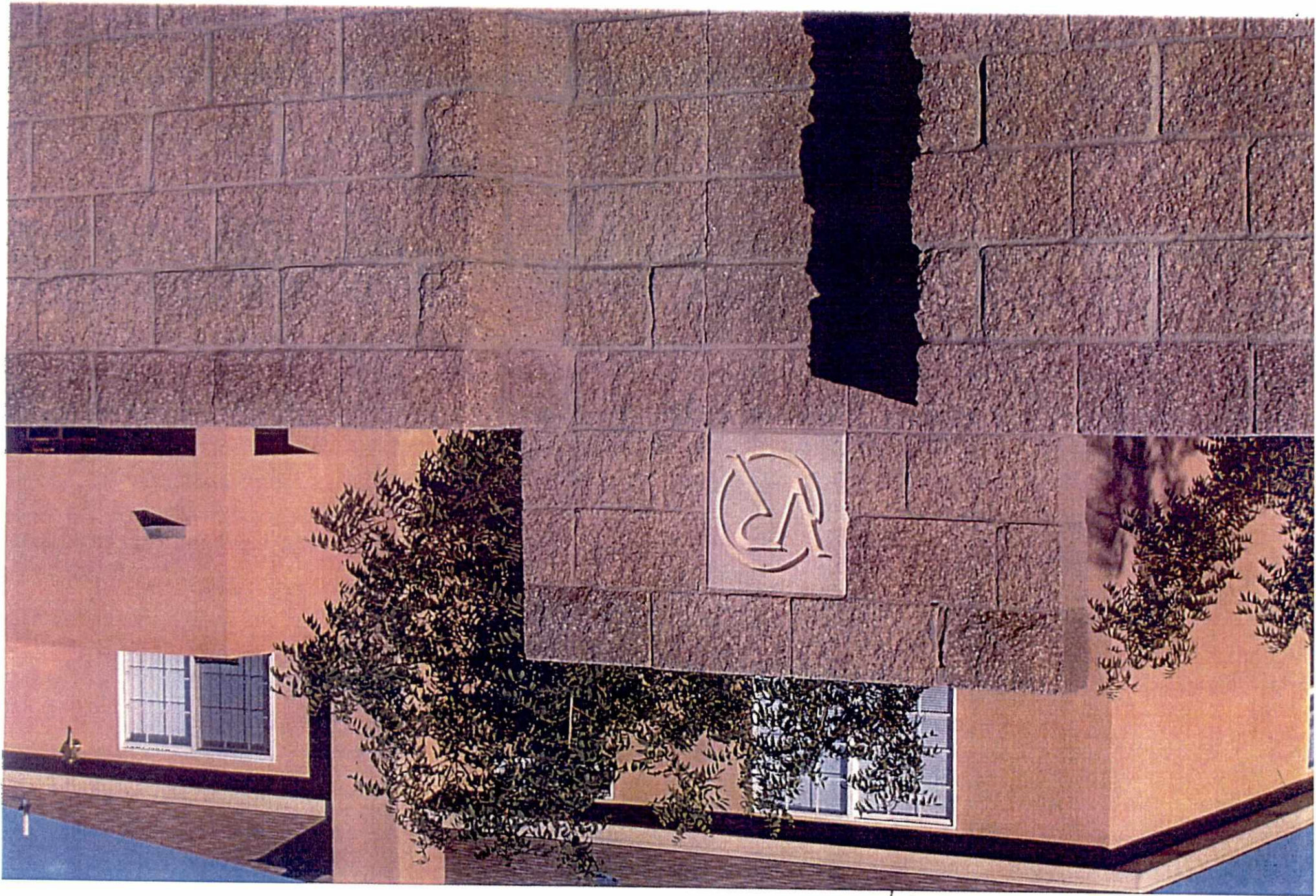






VF TYBICK 7141 OFFEROR  
C-8-4-1002

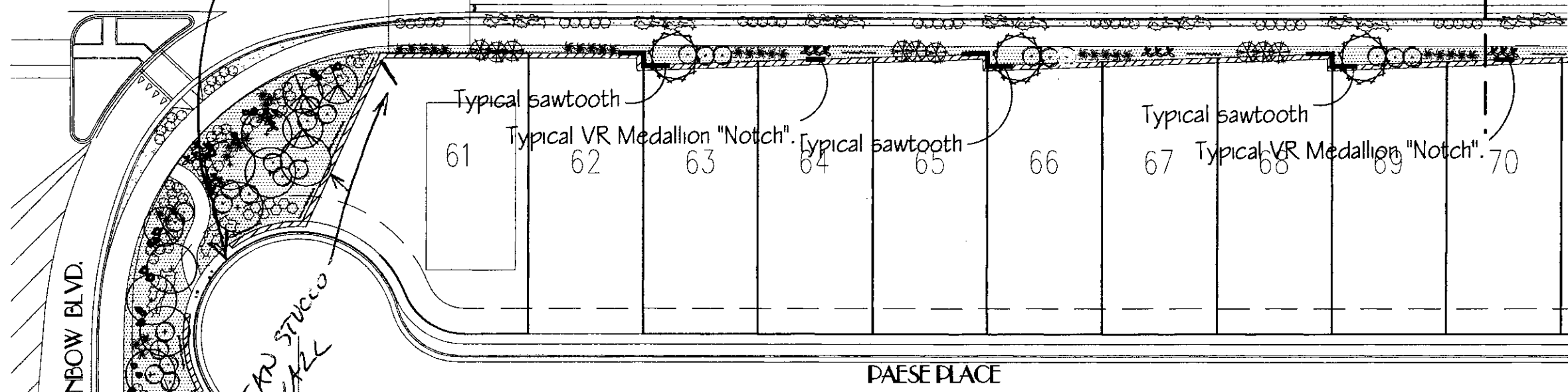


Typical VA ASOTCH

TYPICAL PEDESTRIAN OPENING - SEE PHOTO

IRVING BLVD.

MATCHLINE



DAESE PLACE

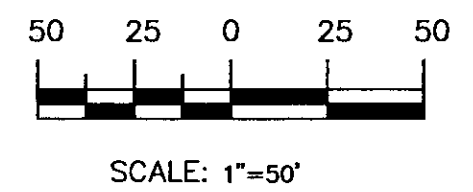
PLANTING LEGEND

SYMBOL	SIZE	NAME	HEIGHT	QTY.
+	6-8'	AUSTRIAN PINE	30-35'	3
⊙	2' Gal.	FLOWERING PEAR	TO 35'	10
⊙	15 Gal.	DESERT WILLOW	TO 15'	12
⊙	5 Gal.	SILVERBERRY	TO 8'	20
⊙	5 Gal.	ROSEMARY, RUSSIAN SAGE, APACHE PLUME, CHAMISA.	TO 3'	49
⊙	5 Gal.	AGAVE OR RED YUCCA	TO 3'	25
⊙	5 Gal.	MAIDENGRASS	TO 3'	93

⊙	2 Gal.	AUTUMN SAGE, POTENTILLA	TO 3'	73
—	1 Gal.	VINE	TO 1'	16
⊙	5 Gal.	HONEYSUCKLE Symbol indicates 3 plants	TO 24"	87
⊙	1 Gal.	WILDFLOWERS	12 TO 18"	143

- ⊙ BASALT BOULDERS (13) & OVERSIZE GRAVEL
- ⊙ SANTA FE BROWN GRAVEL WITH FF ALONG STREET FRONTAGE
- ⊙ SANTA ANA TAN GRAVEL WITH FF, SIDEWALK TO PROPERTY LINE
- \* NOTE: VERTICAL STEPS IN WALL PER GRADING PLAN FROM WEST TO EAST.

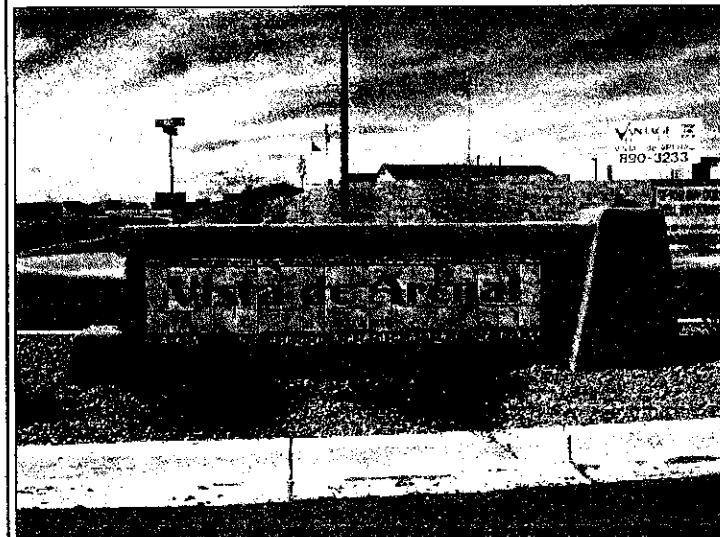
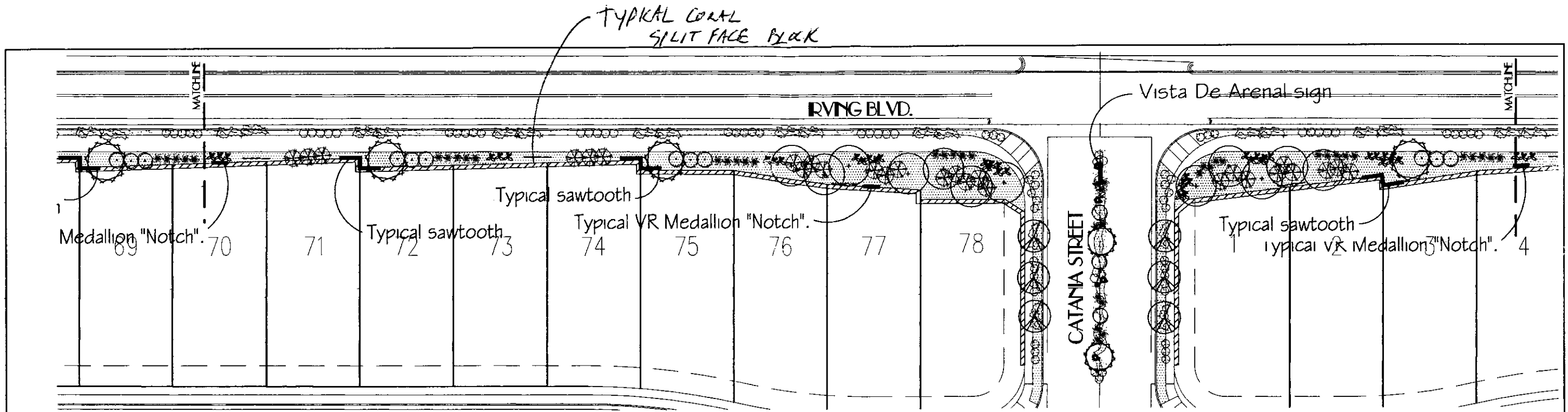
GRAPHIC SCALE



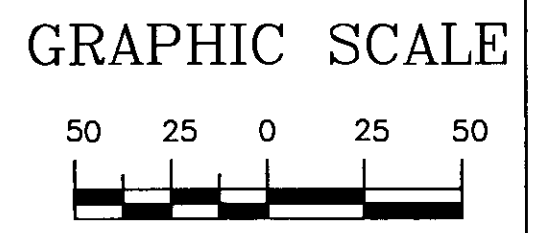
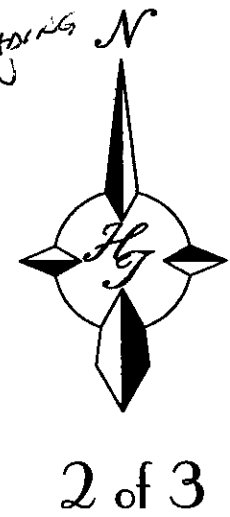
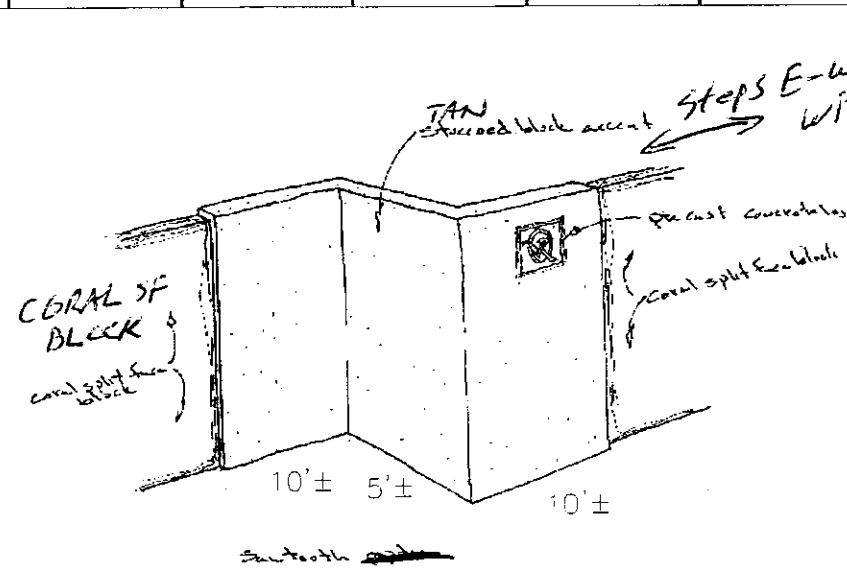
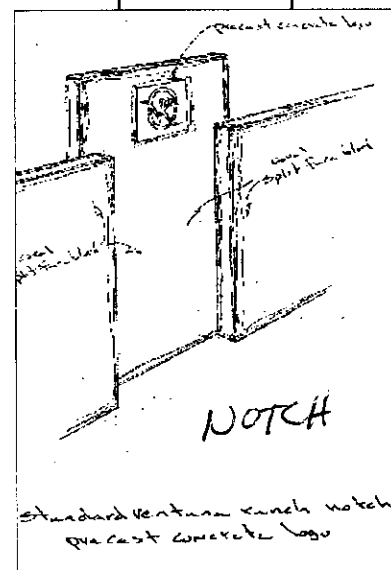
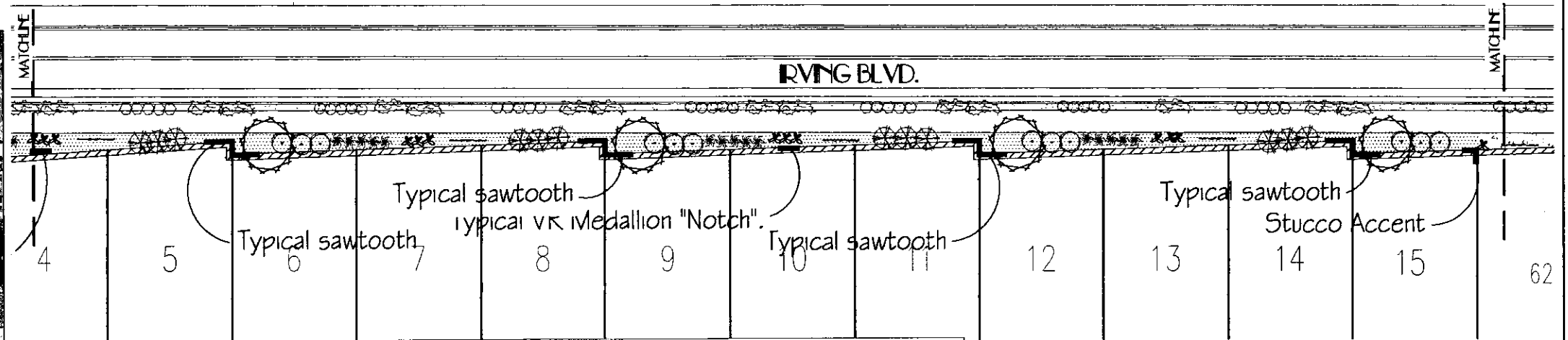
Irving Boulevard  
Travilla Unit 2

preliminary 3/19/04 DRB# 1000593 ZONE MAP: B9

Perimeter Wall Approved  
DRB Chair  
Date



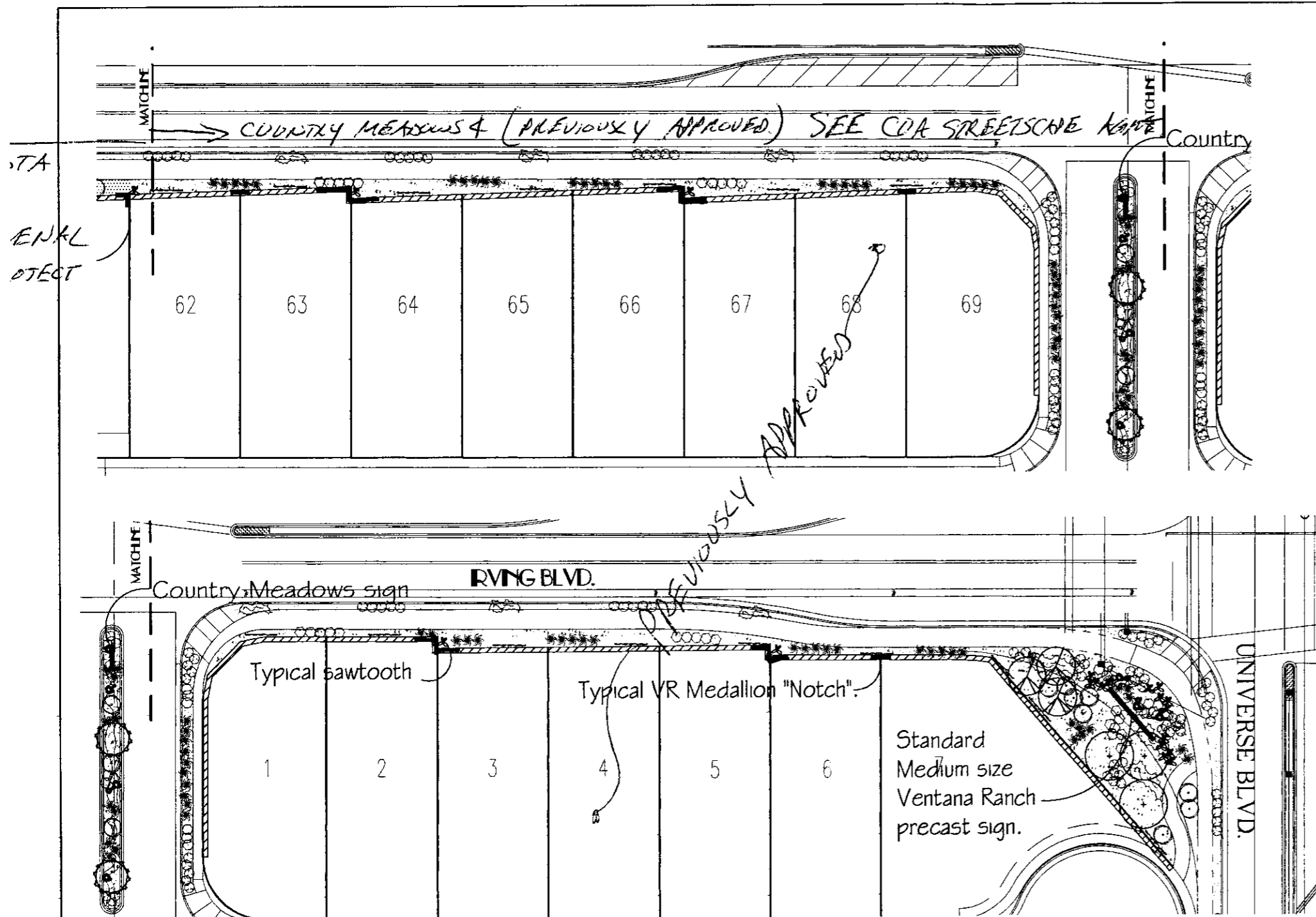
Vista De Arenal Sign



SCALE: 1"=50'

**The Hilltop**  
LANDSCAPE ARCHITECTS & CONTRACTORS

**Irving Boulevard**  
Vista De Arenal Unit 3  
preliminary 3/19/04



**LANDSCAPE NOTES:**

Landscape maintenance shall be the responsibility of the Ventana Ranch Community Association, Inc.

It is the intent of this plan to comply with the City Of Albuquerque Water Conservation Landscaping and Water Waste Ordinance planting restriction approach.

Approval of this plan does not constitute or imply exemption from water waste provisions of the Water Conservation Landscaping and Water Waste Ordinance. Water management is the sole responsibility of the Property Owner.

All landscaping will be in conformance with the City of Albuquerque Zoning Code, Street Tree Ordinance, Pollen Ordinance, and Water Conservation Landscaping and Water Waste Ordinance. In general, water conservative, environmentally sound landscape principles will be followed in design and installation.

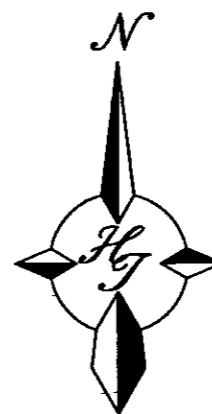
Santa Fe Brown/Santa Ana Tan Gravel over Filter Fabric shall be placed in all landscape areas which are not designated to receive native seed.

Landscape planting is to be adjusted in the field so that no plant is within 3' off the walk when planted.

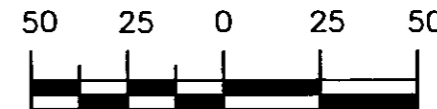
# Irving Boulevard

Country Meadows Unit 4 - FOR INFO ONLY

preliminary 3/19/04



## GRAPHIC SCALE

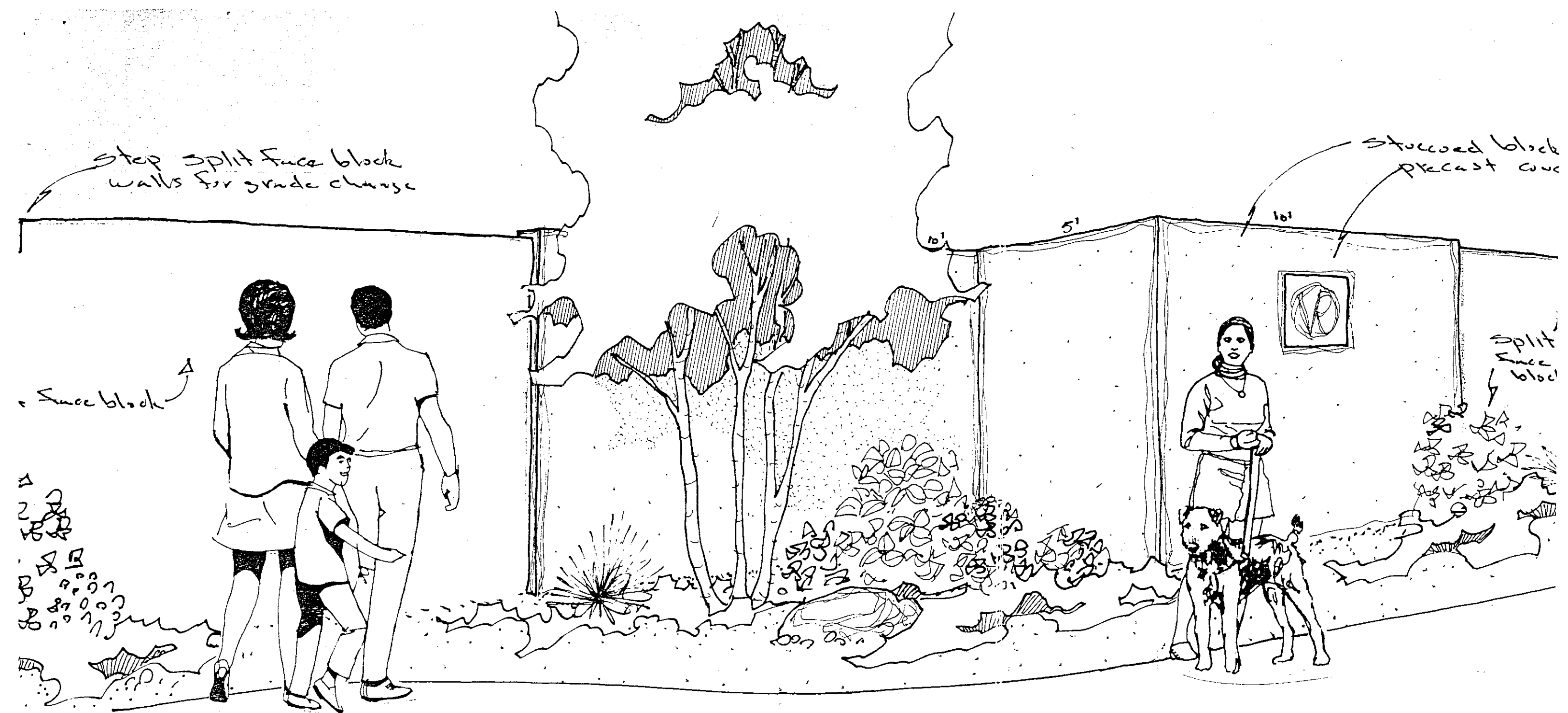


SCALE: 1"=50'

# The Hilltop

LANDSCAPE ARCHITECTS & CONTRACTORS





Ventura ranch  
Sawtooth wall detail