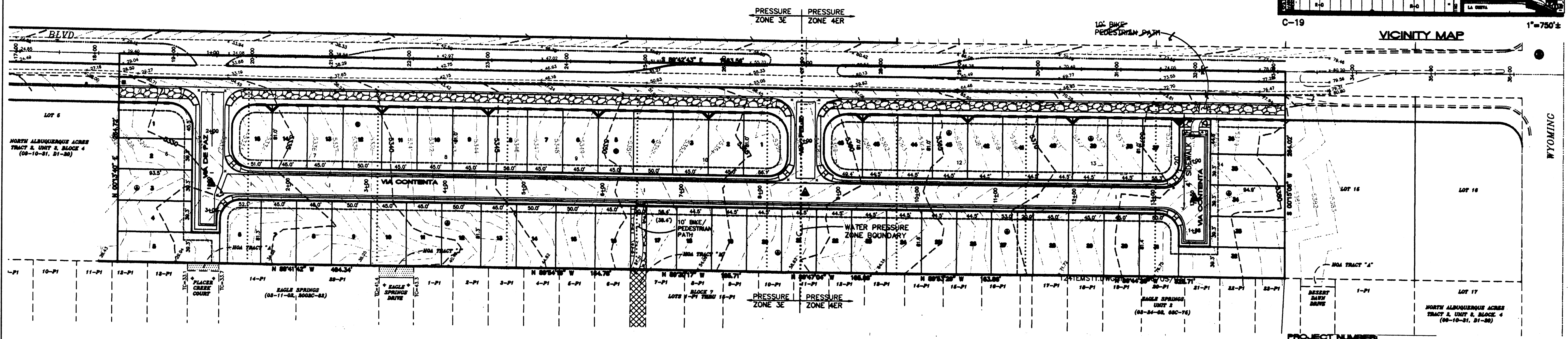
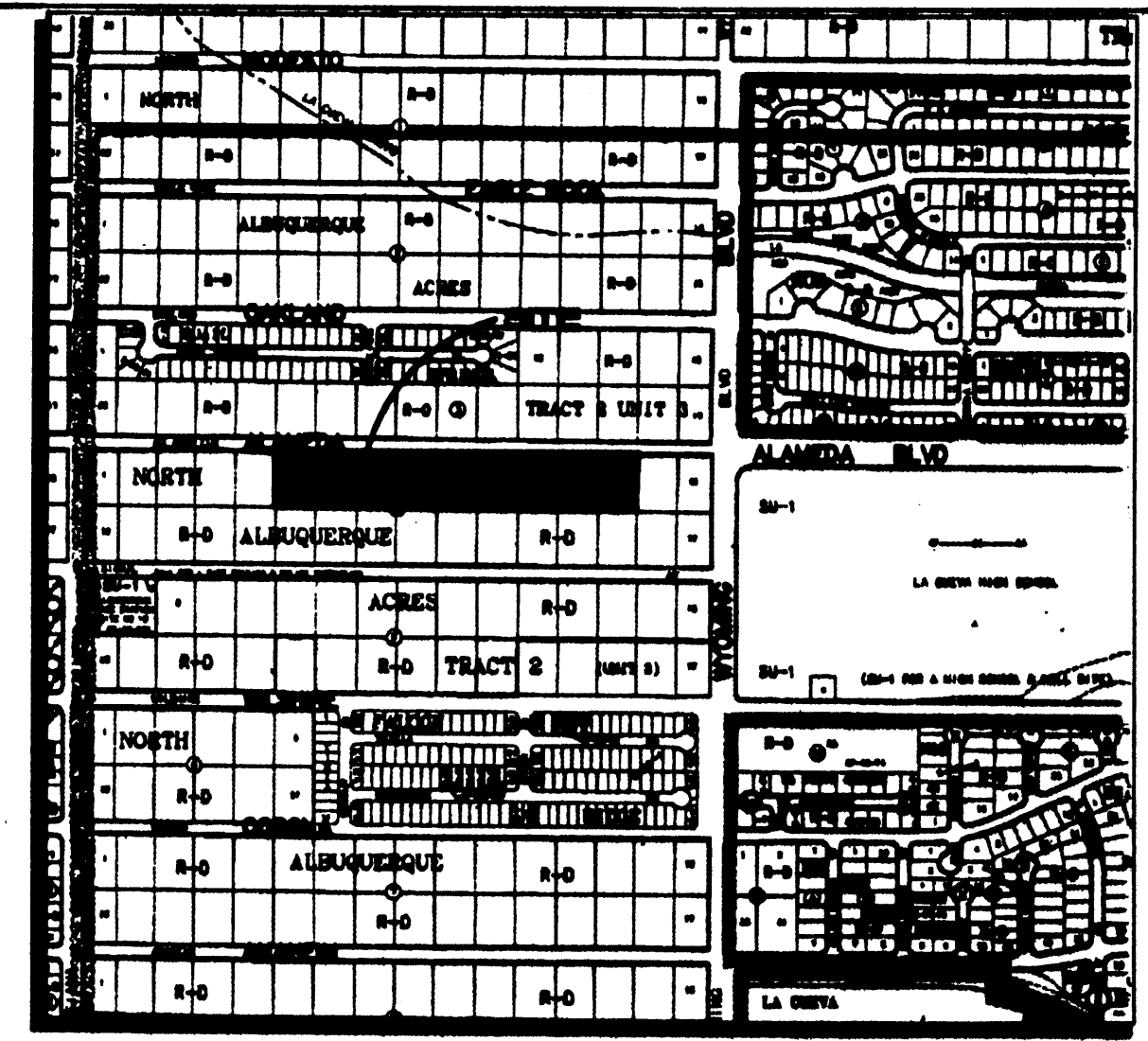
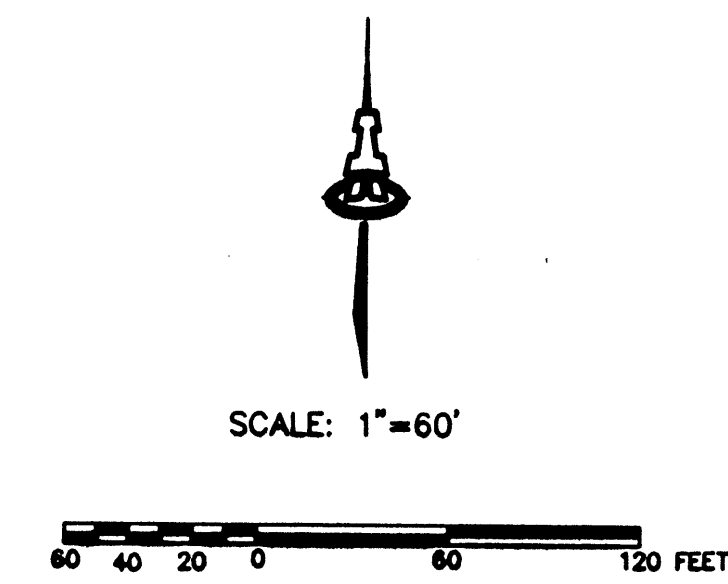


- LEGEND**
- 5200 — EXISTING CONTOUR
 - 52 — PROPOSED CONTOUR
 - PERIMETER WALL
 - PERIMETER WALL



PROJECT NUMBER:
APPLICATION NUMBER:
 This plan is consistent with the specific Site Development Plan approved by the Environmental Planning Commission (EPC), dated [redacted] and the Findings and Conditions in the Official Notification of Decision are satisfied.
DRB SITE DEVELOPMENT PLAN SIGNOFF APPROVAL:

Christina Sandoval 6/25/03
 Parks & Recreation Date

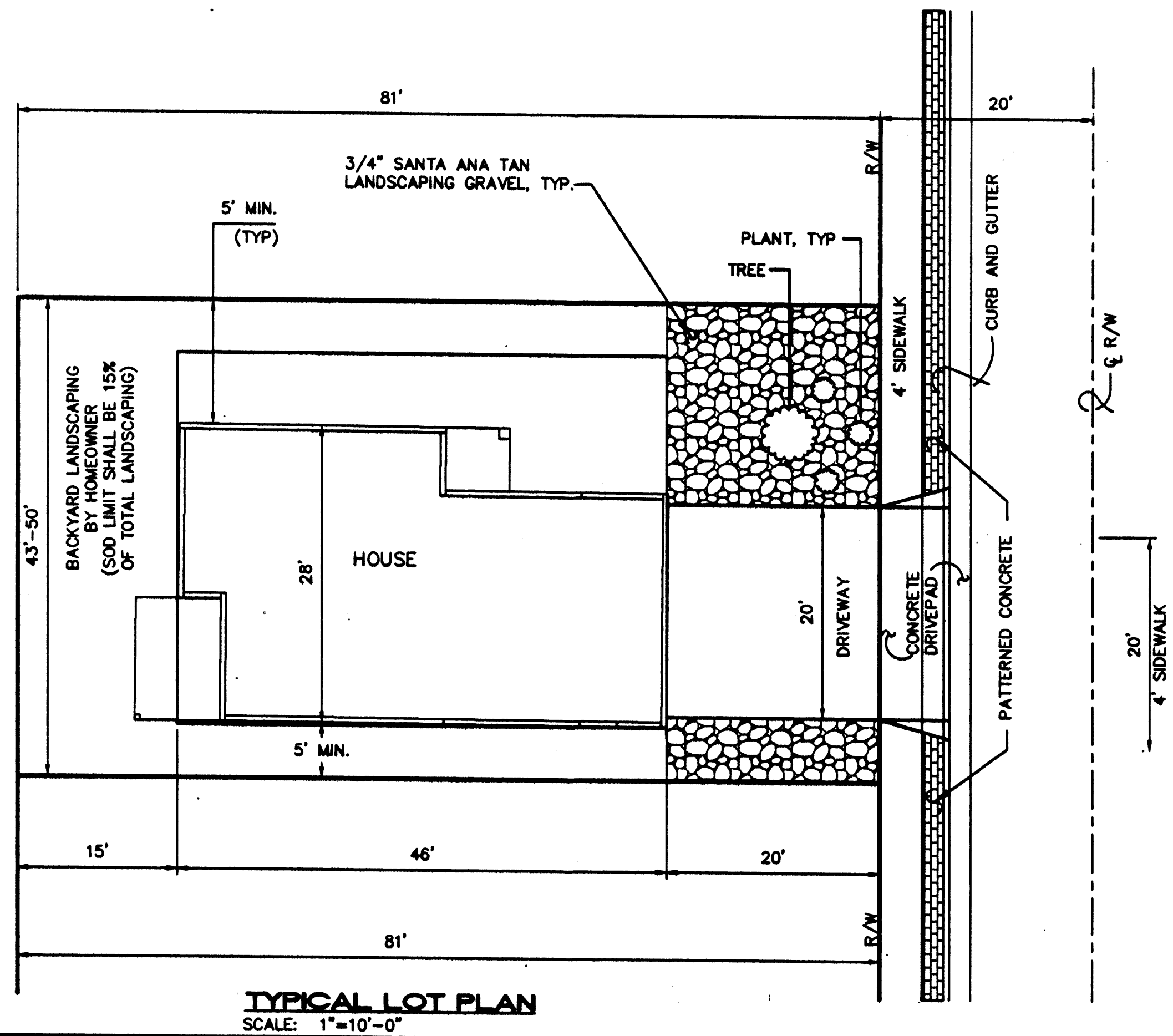
Beath S. Bihan 6/25/03
 City Engineer

Phil Davis 6-25-03
 Transportation

Regard Area 6-25-03
 Utilities

Sharon Watson 6/25/03
 Planning

- VIEW NOTES:**
1. ENSURE THAT DEVELOPMENT RESPECTS THE VIEWS OF THE SANDIA MOUNTAINS TO THE EAST AND THE MESA TO THE WEST. THIS INCLUDES PRESERVING VIEWS FROM OUT OF SITE AND SITE DESIGN TO TAKE ADVANTAGE OF VIEWS FROM THE SITE.
 2. ALL UTILITIES SHALL BE PLACED UNDERGROUND.
 3. ROOFTOP MECHANICAL AND ELECTRICAL EQUIPMENT, MICROWAVE ANTENNAE, OR SIMILAR ROOFTOP HARDWARE SHALL BE SCREENED FROM PUBLIC VIEW.



TYPICAL LOT PLAN
 SCALE: 1"=10'-0"

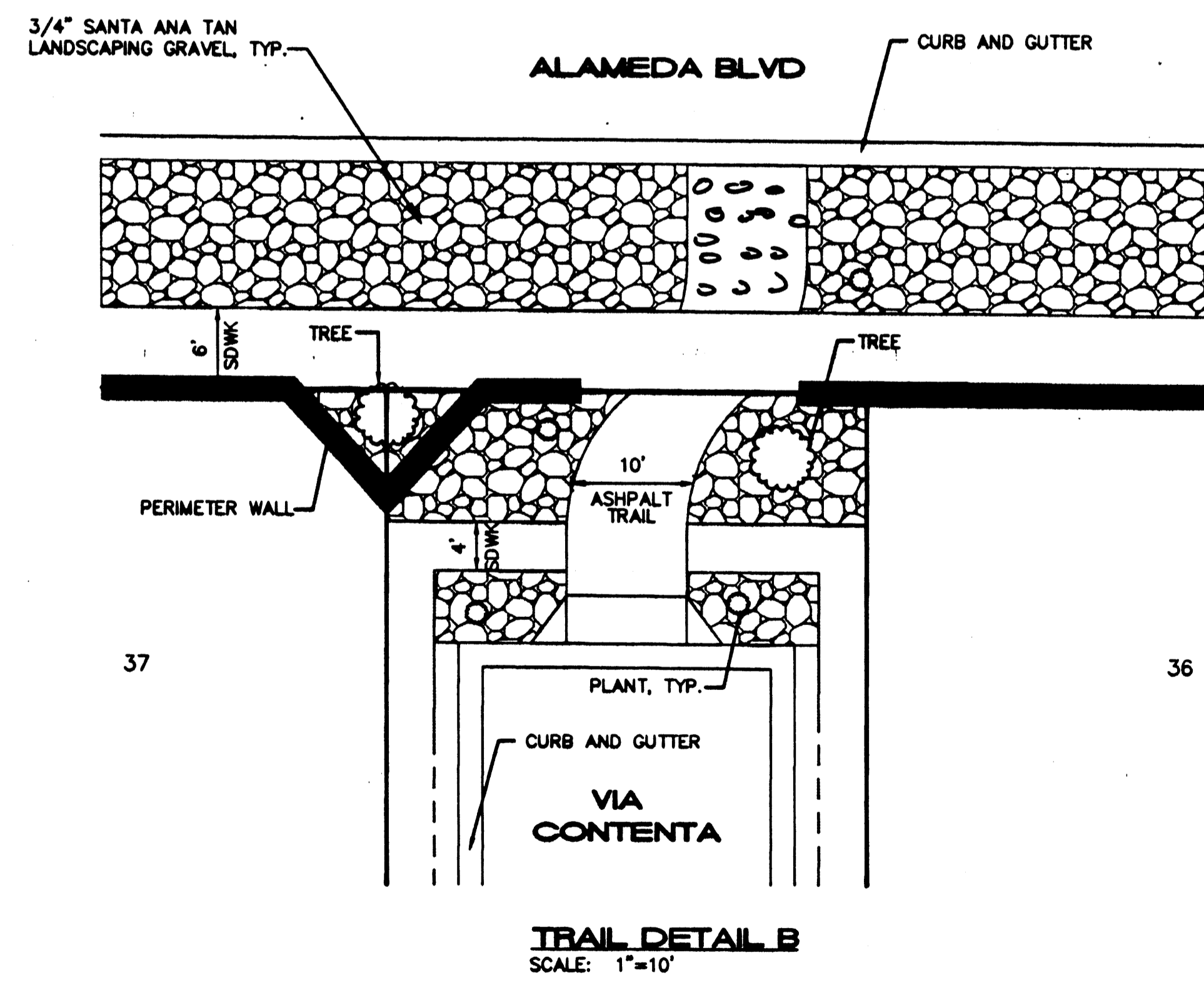
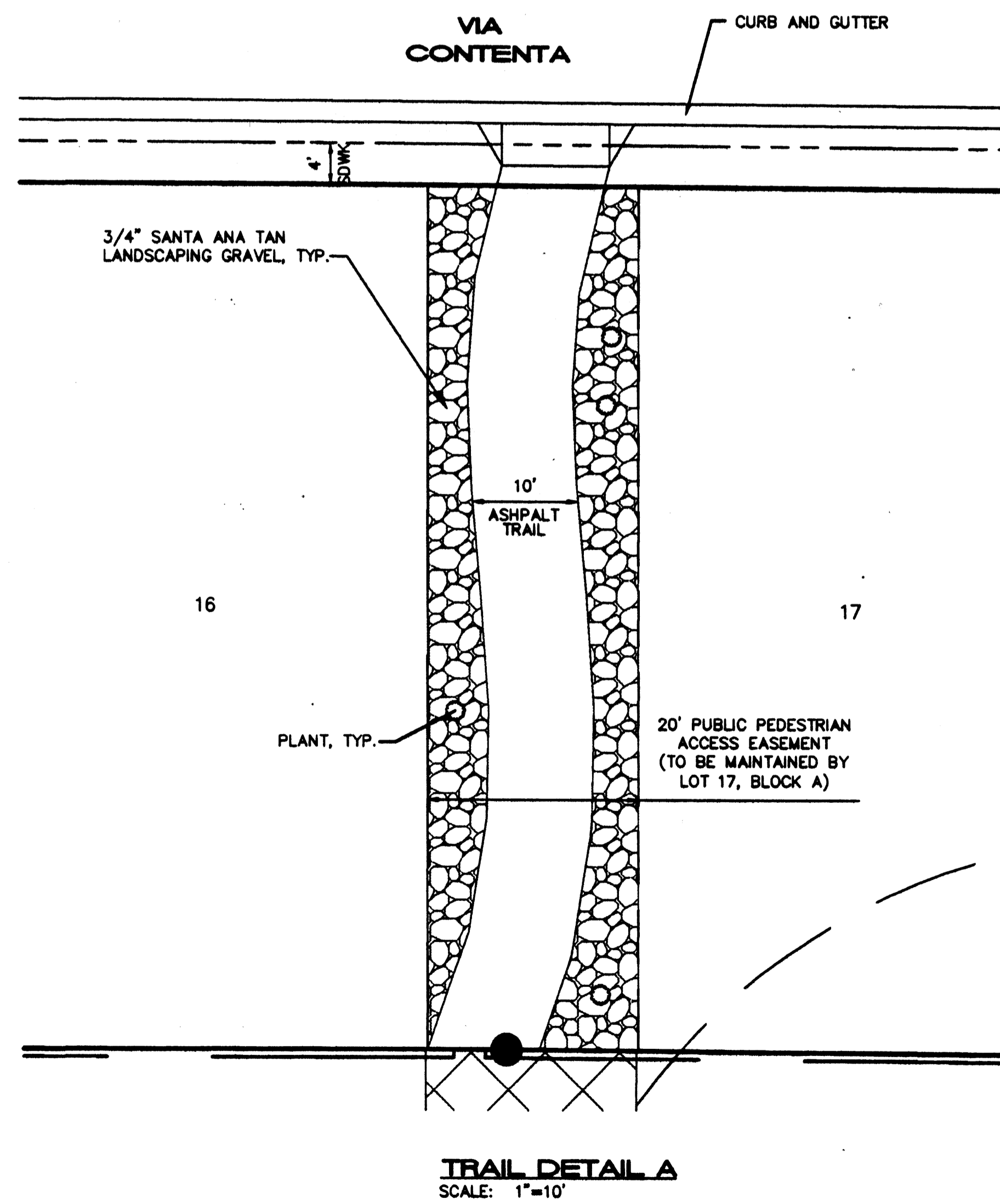
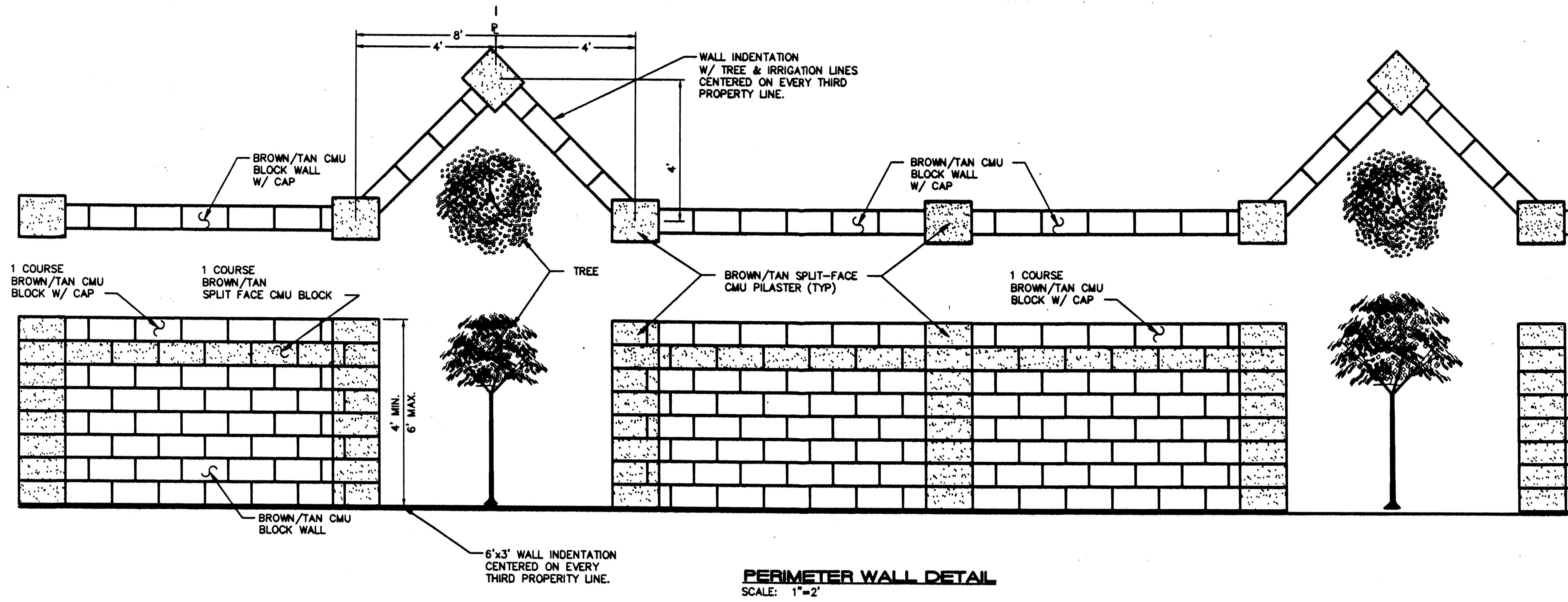
TREMENTINA SUBDIVISION
SITE DEVELOPMENT PLAN
FOR SUBDIVISION

ISAACSON & ARPMAN, P.A.
 Consulting Engineering Associates
 120 Seneca Street N.E.
 Albuquerque, New Mexico

1257SDP-PH2.DWG 06/25/03

SHEET 1 OF 2

PROJECT 1002639



TREMENTINA SUBDIVISION
SITE DEVELOPMENT PLAN
FOR SUBDIVISION

ISAACSON & ARFMAN, P.A.
Consulting Engineering Associates
128 Monroe Street N.E.
Albuquerque, New Mexico

NEW MEXICO
10000
425763
PROFESSIONAL ENGINEER

1257SDP-PH2.DWGjld 06/25/03

SHEET 2 OF 2