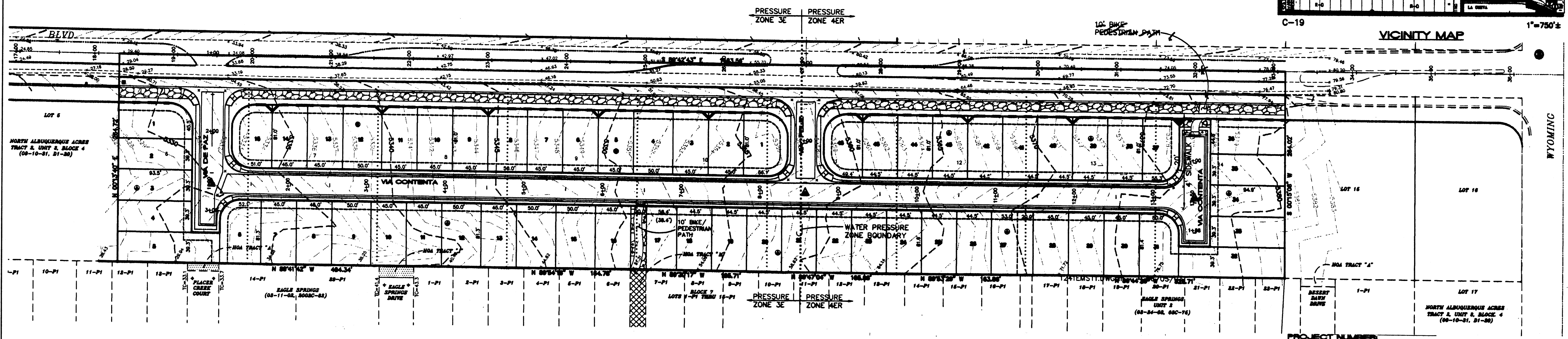
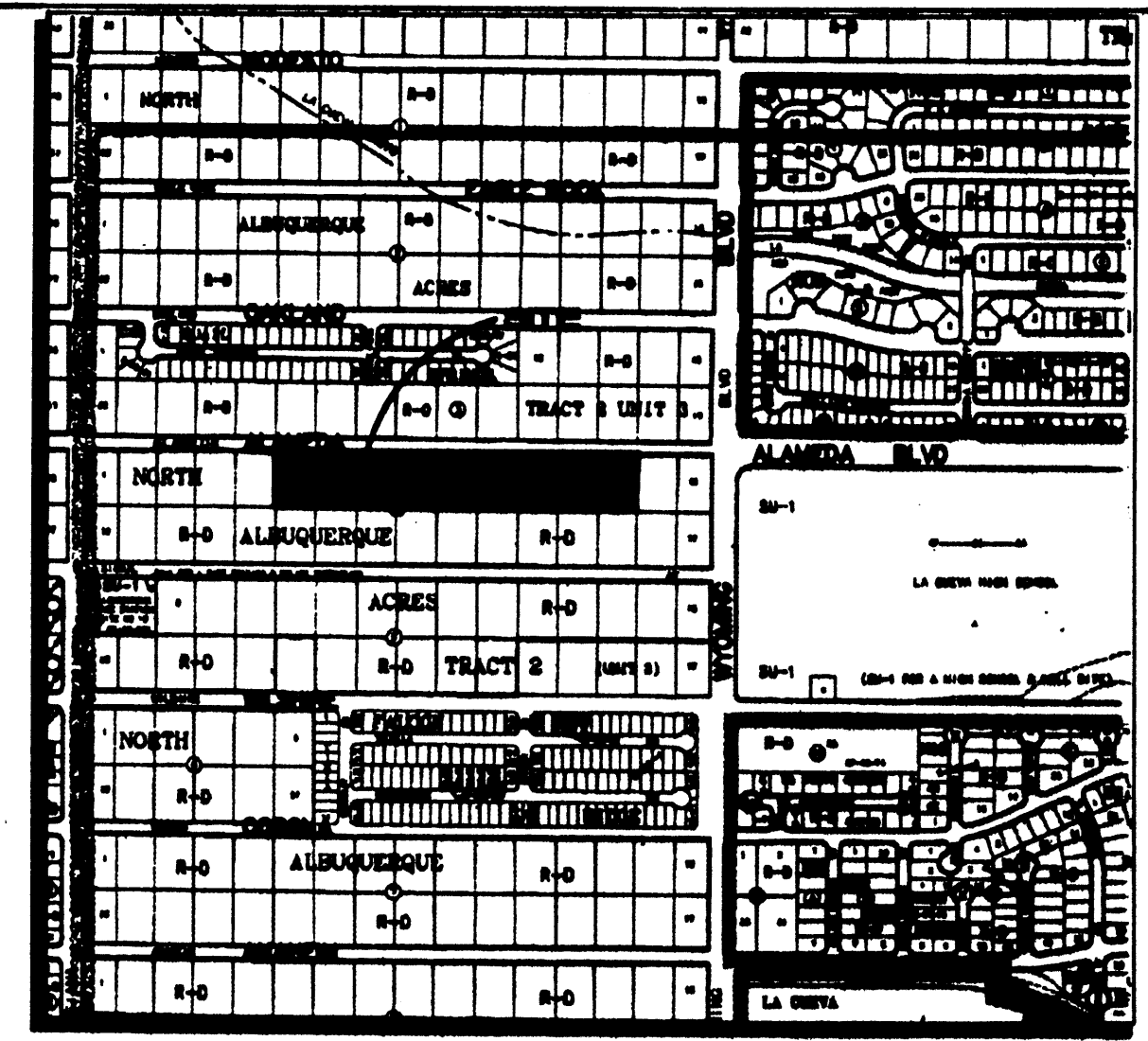
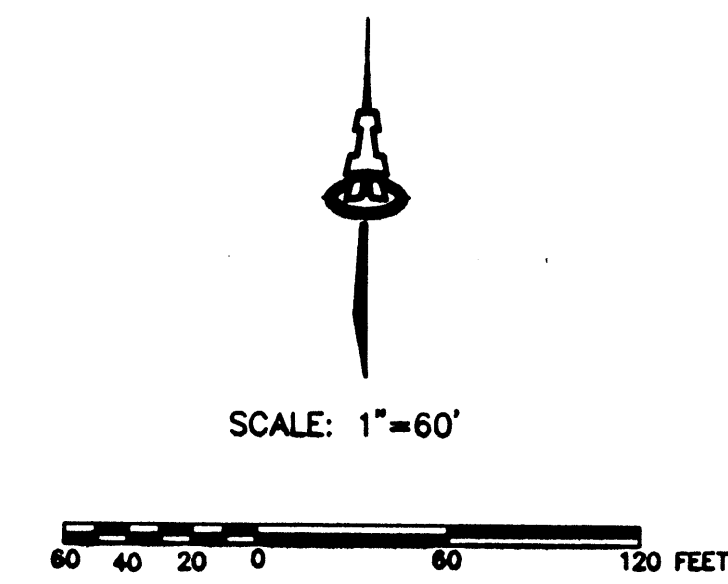


- LEGEND**
- 5200 — EXISTING CONTOUR
  - 52 — PROPOSED CONTOUR
  - PERIMETER WALL



**PROJECT NUMBER:**  
**APPLICATION NUMBER:**  
 This plan is consistent with the specific Site Development Plan approved by the Environmental Planning Commission (EPC), dated [redacted] and the Findings and Conditions in the Official Notification of Decision are satisfied.  
**DRB SITE DEVELOPMENT PLAN SIGNOFF APPROVAL:**

*Christina Sandoval* 6/25/03  
 Parks & Recreation Data

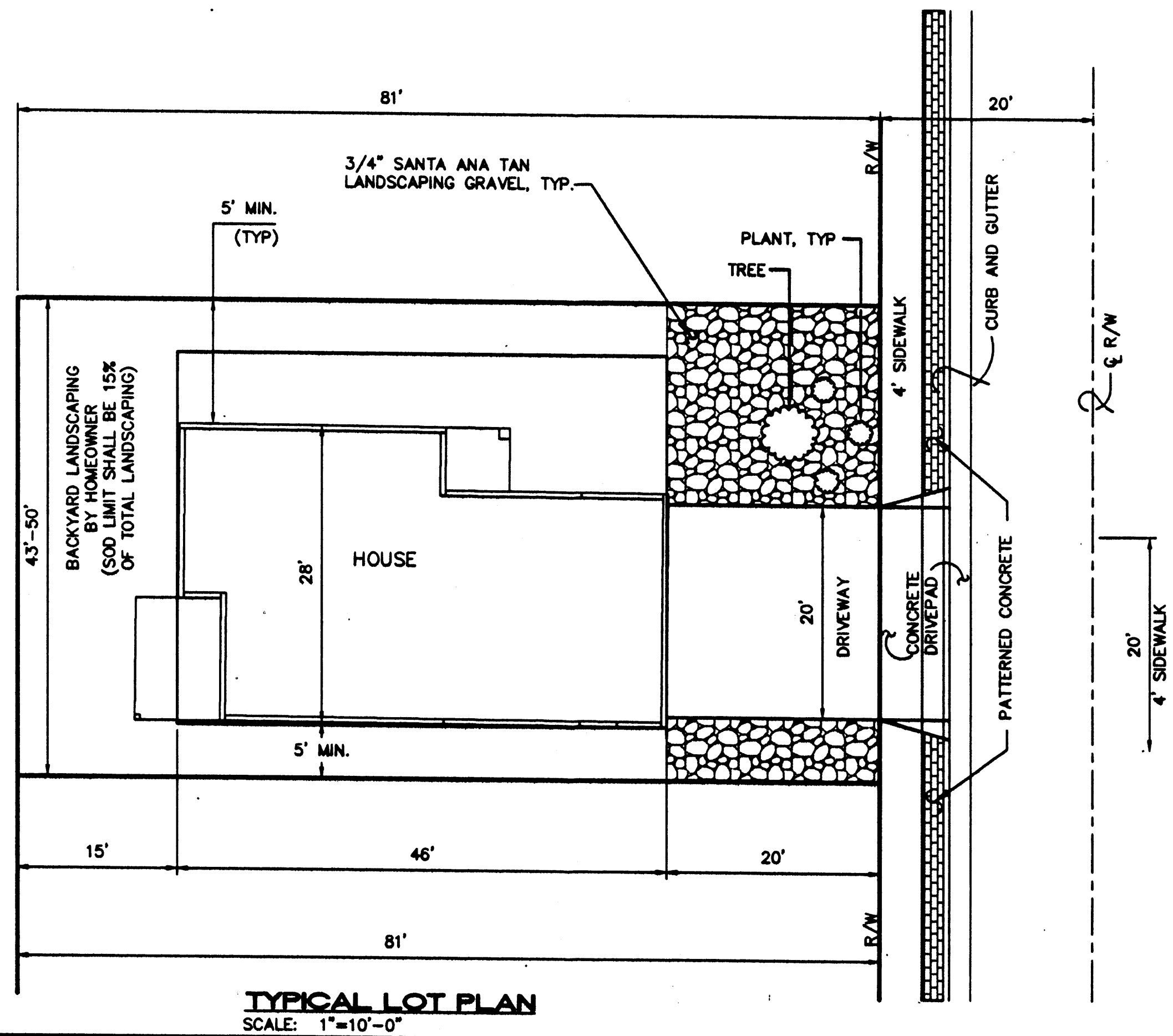
*Beath S. Bihan* 6/25/03  
 City Engineer

*Phil Davis* 6-25-03  
 Transportation

*Regard Area* 6-25-03  
 Utilities

*Sharon Watson* 6/25/03  
 Planning

- VIEW NOTES:**
1. ENSURE THAT DEVELOPMENT RESPECTS THE VIEWS OF THE SANDIA MOUNTAINS TO THE EAST AND THE MESA TO THE WEST. THIS INCLUDES PRESERVING VIEWS FROM OUT OF SITE AND SITE DESIGN TO TAKE ADVANTAGE OF VIEWS FROM THE SITE.
  2. ALL UTILITIES SHALL BE PLACED UNDERGROUND.
  3. ROOFTOP MECHANICAL AND ELECTRICAL EQUIPMENT, MICROWAVE ANTENNAE, OR SIMILAR ROOFTOP HARDWARE SHALL BE SCREENED FROM PUBLIC VIEW.



**TYPICAL LOT PLAN**  
 SCALE: 1"=10'-0"

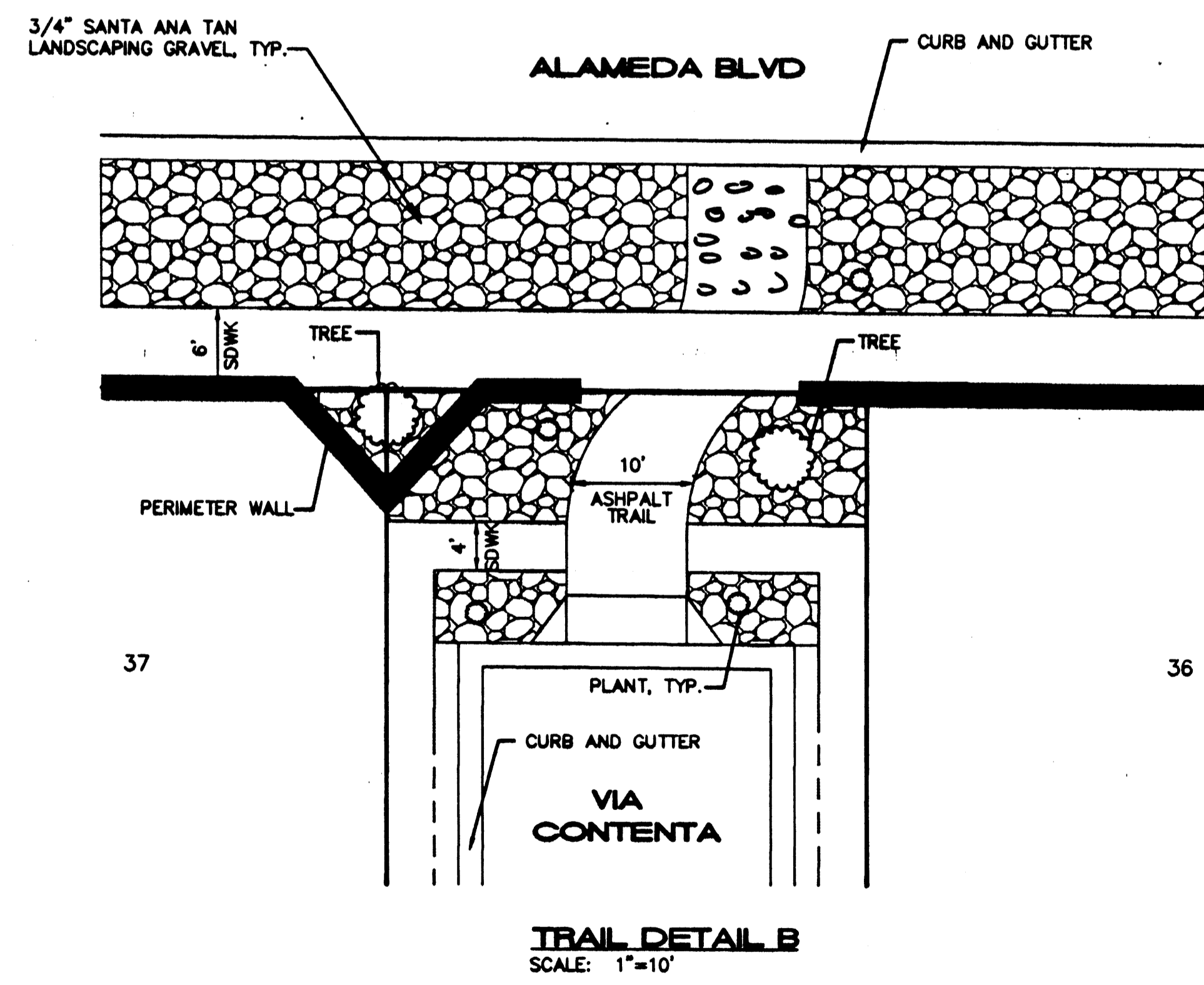
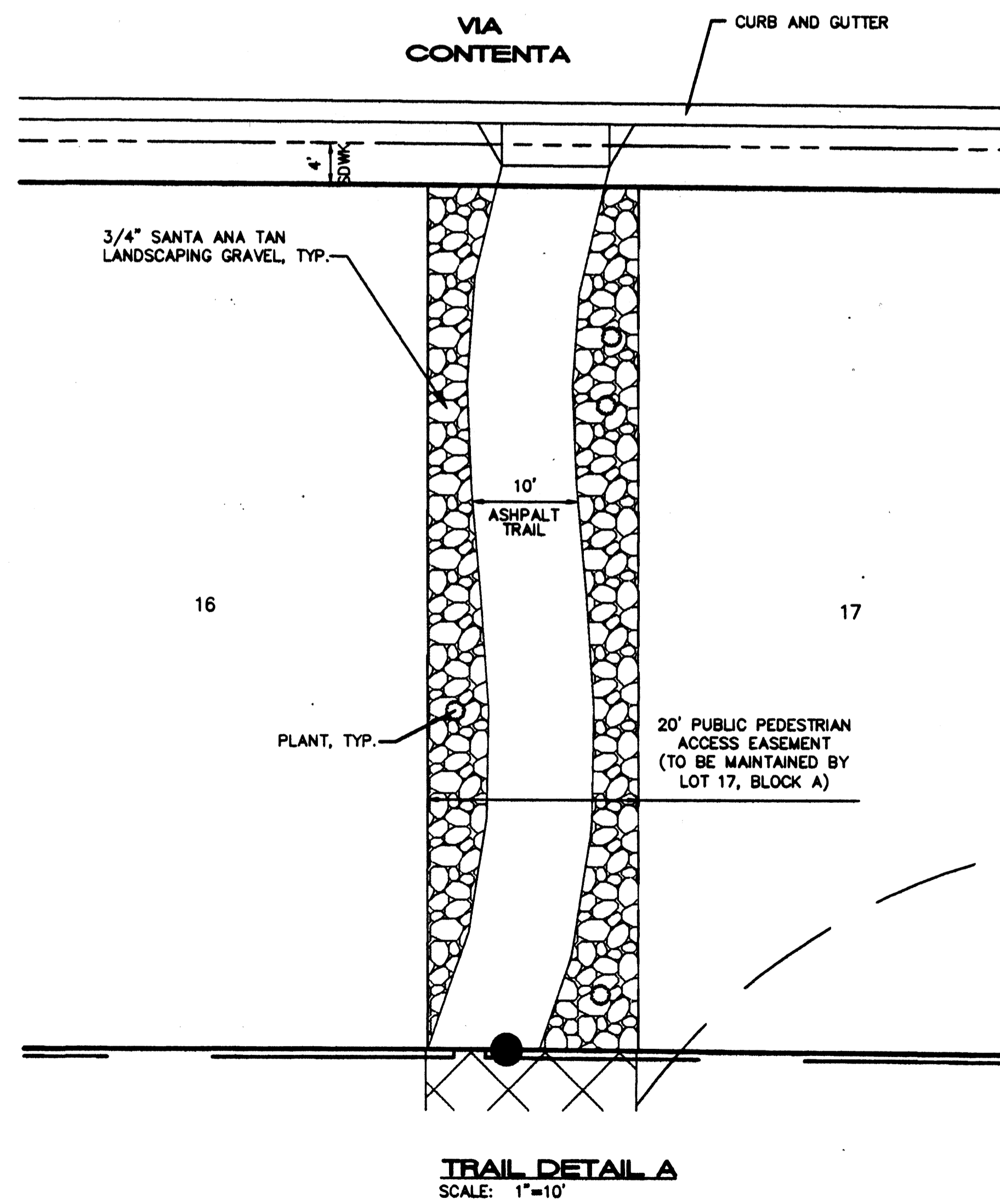
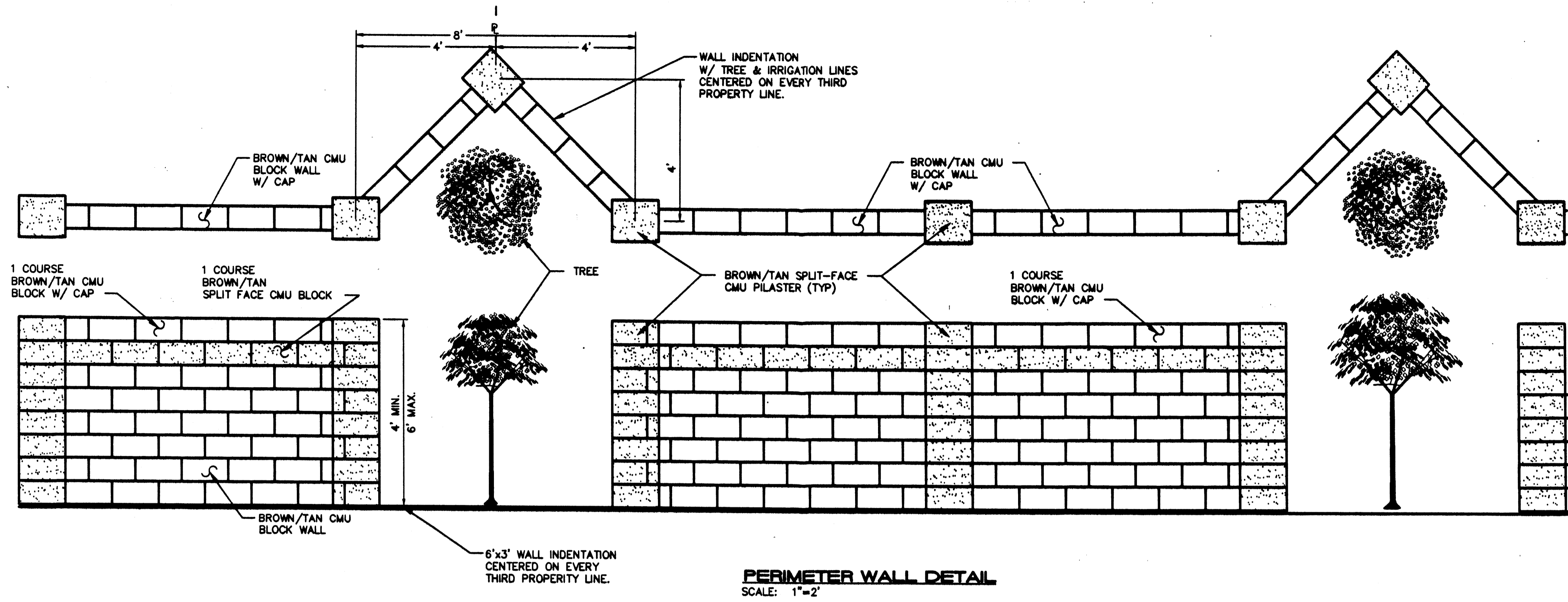
**TREMONTINA SUBDIVISION**  
**SITE DEVELOPMENT PLAN**  
**FOR SUBDIVISION**

**ISAACSON & ARPMAN, P.A.**  
 Consulting Engineering Associates  
 120 Seneca Street N.E.  
 Albuquerque, New Mexico

1257SDP-PH2.DWG.rh 06/25/03

**SHEET 1 OF 2**

PROJECT 1002639



TREMENTINA SUBDIVISION  
 SITE DEVELOPMENT PLAN  
 FOR SUBDIVISION

ISAACSON & ARFMAN, P.A.  
 Consulting Engineering Associates  
 128 Norvue Street N.E.  
 Albuquerque, New Mexico

NEW MEXICO  
 1988  
 PROFESSIONAL ENGINEER

1257SDP-PH2.DWGjld 06/25/03

SHEET 2 OF 2