

LOCATION MAP

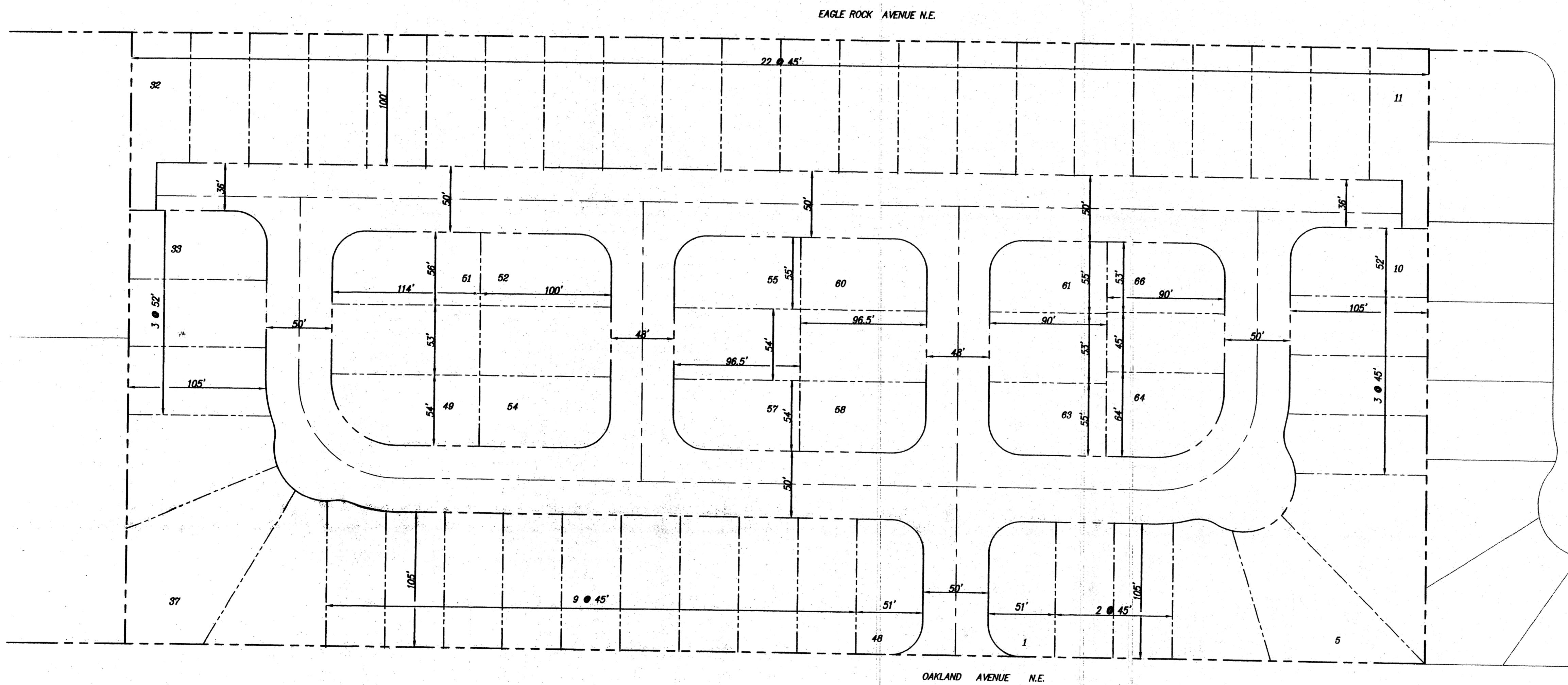
ZONE ATLAS C-18-Z

SCALE: NONE

# SKETCH PLAT

LOTS 7-12 & 21-26, BLOCK 27,  
TRACT A, UNIT B,  
NORTH ALBUQUERQUE ACRES

WITHIN THE  
CITY OF ALBUQUERQUE  
BERNALILLO COUNTY, NEW MEXICO  
JUNE, 2003



**LEGAL DESCRIPTION**

LOTS 7-12 AND 21-26, BLOCK 27 TRACT A, UNIT B,  
NORTH ALBUQUERQUE ACRES.

**SUBDIVISION DATA**

GROSS ACREAGE . . . . . 10.6574 AC  
 ZONE ATLAS NO. . . . . C-18-Z  
 NO. OF EXISTING LOTS . . . . . 12  
 NO. OF TRACTS/LOTS CREATED . . . . . 66  
 NO. OF LOTS ELIMINATED . . . . . 12  
 DATE OF SURVEY . . . . . X  
 ZONING . . . . . SU-2IP

**OWNERS**

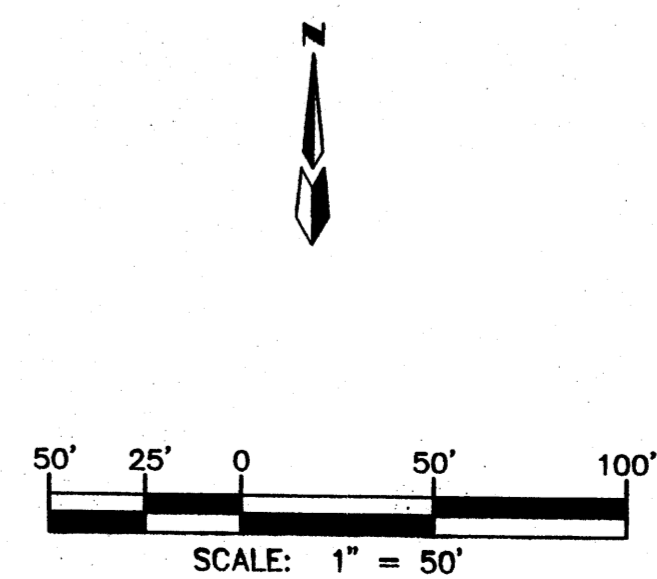
STV INVESTMENTS  
 400 GOLD AVE. S.W. STE 700  
 ALBUQUERQUE, N.M. 87102  
 (505) 338-2286


**ENGINEERS**

D. MARK GOODWIN & ASSOCIATES, P.A.  
 CONSULTING ENGINEERS  
 P.O. BOX 90606  
 ALBUQUERQUE, NEW MEXICO 87199  
 (505) 828-2200

**SURVEYOR**

ALDRICH LAND SURVEY  
 P.O. BOX 30701  
 ALBUQUERQUE, N.M. 87190-0701



<b>VENTURA ESTATES</b>			
<b>SKETCH PLAT</b>			
		MARK GOODWIN & ASSOCIATES, P.A. CONSULTING ENGINEERS	
P.O. BOX 90606 ALBUQUERQUE, NEW MEXICO 87199 (505) 828-2200, FAX (505) 797-9539			
Designed: <i>DMG</i>	Drawn: <i>KJS</i>	Checked: <i>DMG</i>	Sheet <b>I</b> of <b>I</b>
Scale: 1" = 50'	Date: 06-04-03	Job: A03066	