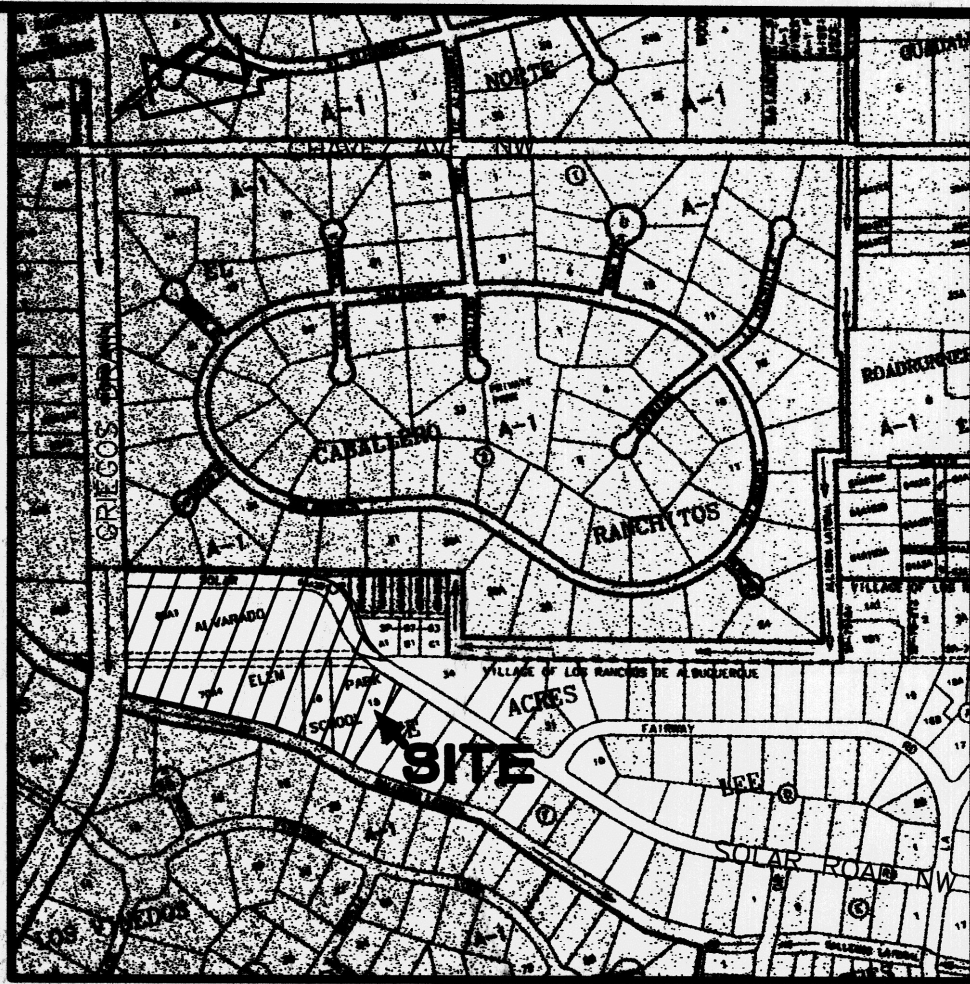


SCALE: 1" = 60'



VICINITY MAP
SCALE: 1" = 750'

E-14

BOUNDARY TABLES

LINE	DIRECTION	DISTANCE
L1	S 46°46'25" E	88.54'
(L1)	S 46°30' E	88.81'
L2	N 47°42'56" W	102.13'
(L2)	N 47°42' W	102.13'
L3	S 13°10'49" W	9.74'
(L3)	S 12°29' W	10.00'
L4	S 03°58'56" E	39.70'
(L4)	S 04°16' E	40.00'
L5	N 78°17'05" W	27.01'
(L5)	N 78°50' W	27.85'

CURVE	RADIUS	LENGTH	CHORD BEARING	CHORD	DELTA
C1	152.77'	195.62'	S 40°49'33" E	182.53'	73°22'06"
(C1)	152.77'	195.31'	S 40°53'30" E	182.28'	
C2	213.33'	157.43'	S 25°23'42" E	153.88'	42°16'52"
(C2)	213.33'	157.25'	S 25°23' E	153.71'	
C3	434.90'	65.74'	N 65°44'26" W	65.68'	08°39'40"
C4	263.33'	86.82'	S 37°05'23" E	86.43'	18°53'26"
(C4)	263.33'	86.09'			

KEYED NOTES

EXISTING EASEMENTS

- ① 5' UTILITY LINE AND DITCH EASEMENT GRANTED BY PLAT D-110
- ② STREET AND PUBLIC RIGHT-OF-WAY EASEMENT GRANTED BY DOCUMENT FILED 03-15-1951, BOOK D-172, PAGE 42.

EXISTING EASEMENTS - OFFSITE

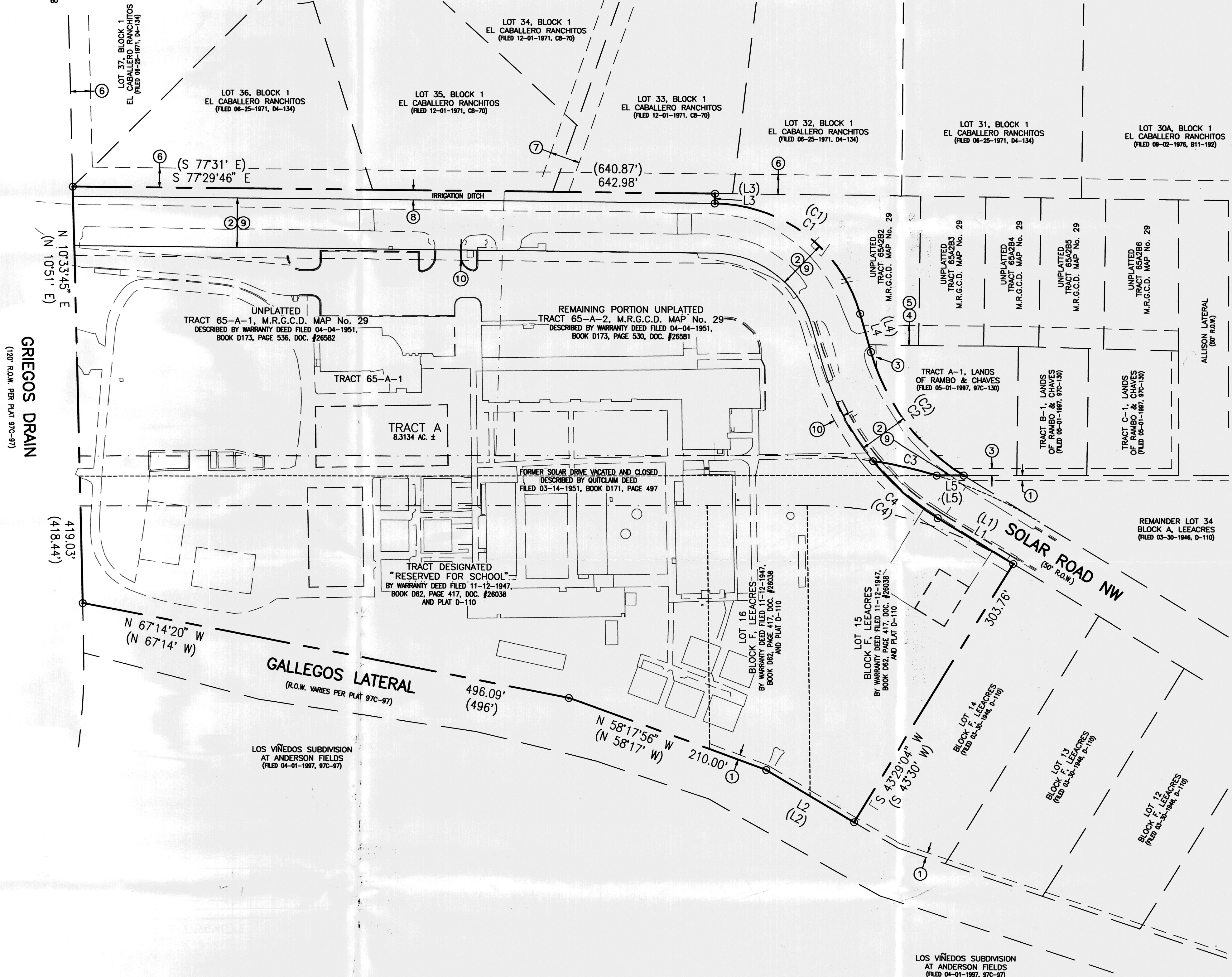
- ③ 7' PUBLIC UTILITY EASEMENT GRANTED BY PLAT 97C-130
- ④ PUBLIC WATER AND SEWER EASEMENT GRANTED BY DOCUMENT FILED 06-24-1994, BOOK 94-19, PAGES 5086-5090 PER PLAT 97C-130
- ⑤ 20' PRIVATE ACCESS EASEMENT PER PLAT 95C-203
- ⑥ 20' RIDING EASEMENT GRANTED BY PLAT D4-134
- ⑦ 30' UTILITY EASEMENT GRANTED BY PLAT C8-70

DEDICATIONS

- ⑧ IRRIGATION DITCH TO BE DEDICATED TO THE MIDDLE RIO GRAND CONSERVANCY DISTRICT. AREA = 0.1436 ACRES ±
- ⑨ PUBLIC STREET RIGHT-OF-WAY TO BE DEDICATED TO THE CITY OF ALBUQUERQUE. AREA = 1.1254 ACRES ±

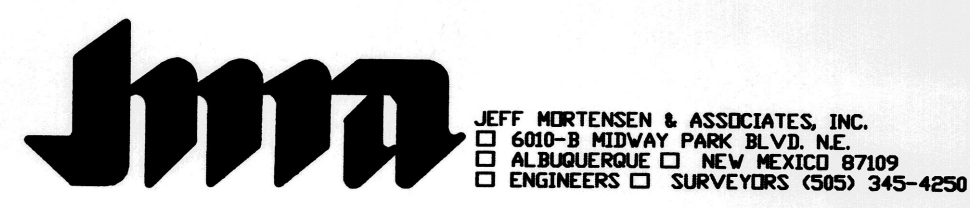
NEW EASEMENT

- ⑩ 10' PUBLIC UTILITY EASEMENT TO BE GRANTED BY FORTHCOMING PLATTING ACTION



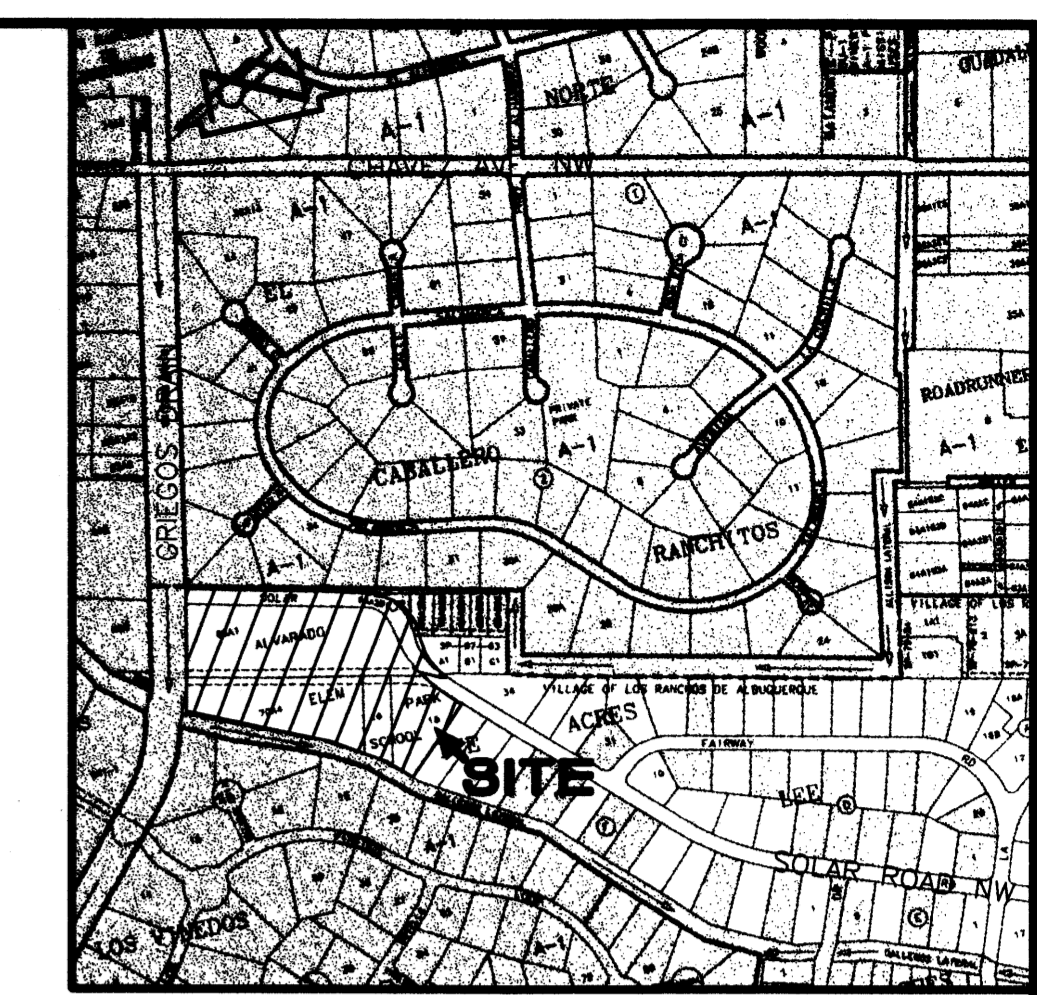
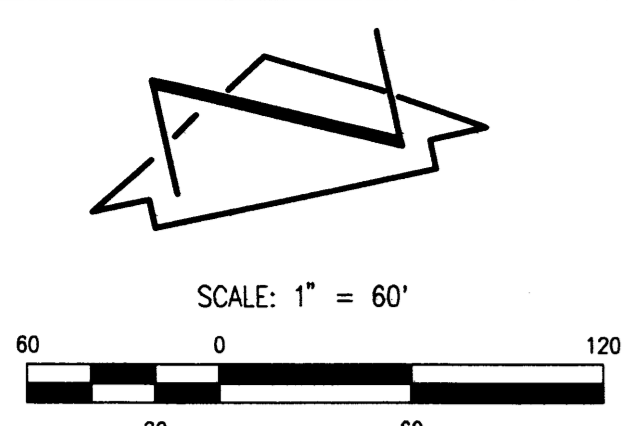
THE PURPOSE OF THIS REQUEST IS TO: 1) CONSOLIDATE UNPLATTED TRACT 65-A-1, A PORTION OF UNPLATTED TRACT 65-A-2, M.R.G.C.D. PROPERTY MAP No. 29, LOTS 15, 16 AND THE TRACT OF LAND RESERVED FOR SCHOOL, BLOCK F, LEEACRES AND A PORTION OF VACATED SOLAR ROAD (DRIVE) TO CREATE TRACT A; 2) DEDICATE THE ALIGNMENT OF SOLAR ROAD NW; 3) DEDICATE THE IRRIGATION DITCH; 4) DEMONSTRATE THE GRANTING OF EASEMENTS AS SHOWN ON THIS DRAWING

File Path: \\JMA\WORK\2003\31809\SKETCH.DWG | Plot Date: 06-05-2003 | Plot Time: 12:11 pm
 File Name: 31809SKETCH.DWG

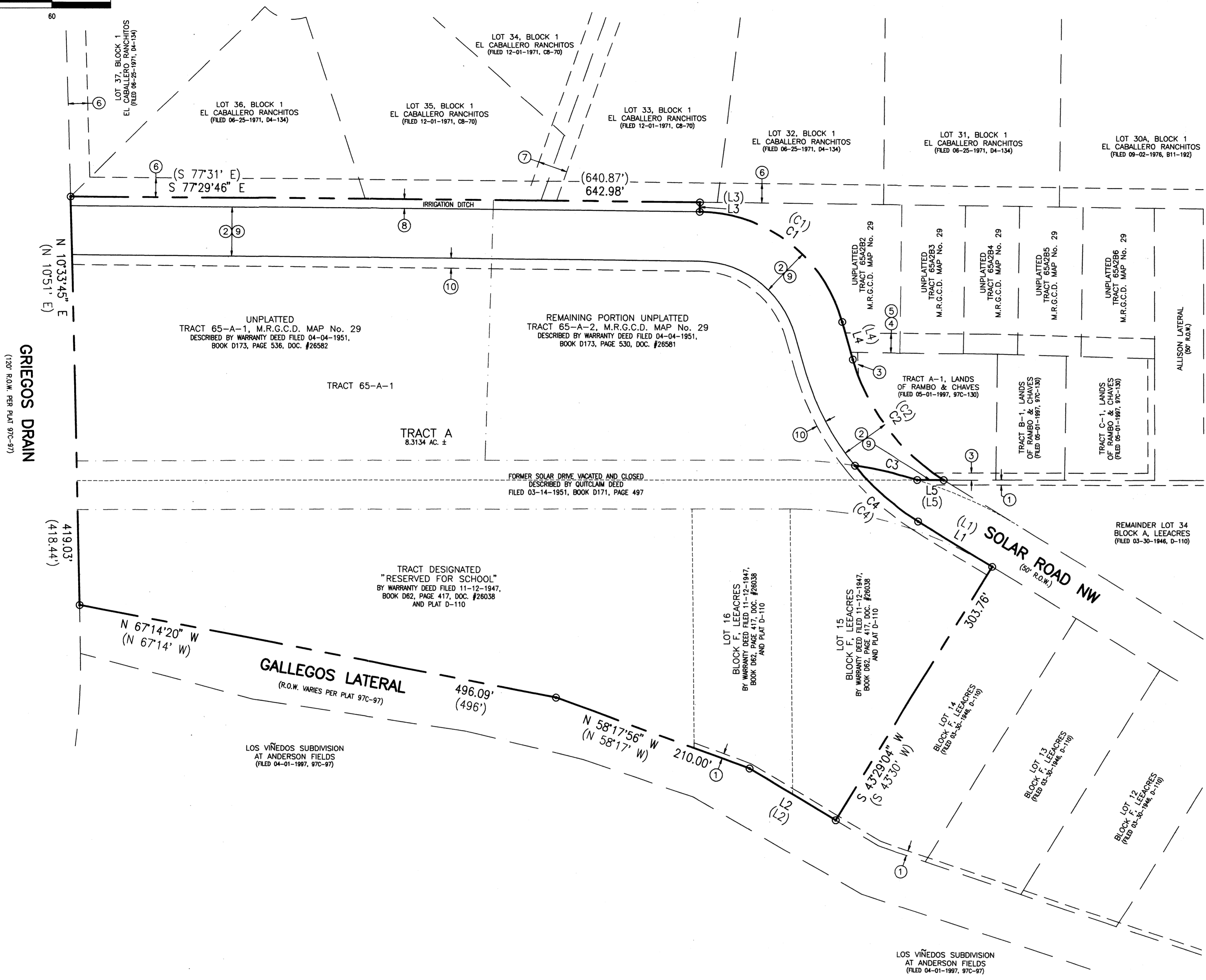


**SKETCH PLAT
TRACT A, ALVARADO ELEMENTARY SCHOOL**

SURVEYED BY R.C.W.	NO.	DATE	BY	REVISIONS		JOB NO. 2003.180.9
DRAWN BY T.N.T.						DATE 06-2003
APPROVED BY C.G.C.						SHEET 1 OF 1



VICINITY MAP
SCALE: 1" = 750'
E-14



BOUNDARY TABLES

LINE	DIRECTION	DISTANCE
L1	S 46°46'25" E	88.54'
(L1)	S 46°30' E	88.81'
L2	N 47°42'56" W	102.13'
(L2)	N 47°42' W	102.13'
L3	S 13°10'49" W	9.74'
(L3)	S 12°29' W	10.00'
L4	S 03°58'56" E	39.70'
(L4)	S 04°16' E	40.00'
L5	N 78°17'05" W	27.01'
(L5)	N 78°50' W	27.85'

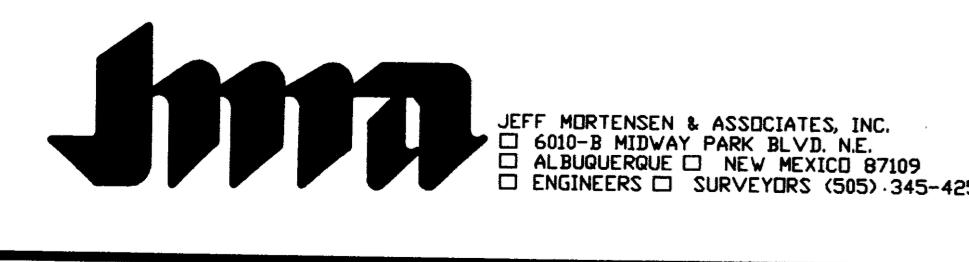
CURVE	RADIUS	LENGTH	CHORD BEARING	CHORD	DELTA
C1	152.77'	195.62'	S 40°49'33" E	182.53'	73°22'06"
(C1)	152.77'	195.31'	S 40°53'30" E	182.28'	
C2	213.33'	157.43'	S 25°23'42" E	153.88'	42°16'52"
(C2)	213.33'	157.25'	S 25°23' E	153.71'	
C3	434.90'	65.74'	N 65°44'26" W	65.68'	08°39'40"
C4	263.33'	86.82'	S 37°05'23" E	86.43'	18°53'26"
(C4)	263.33'	86.09'			

KEYED NOTES

- EXISTING EASEMENTS**
- ① 5' UTILITY LINE AND DITCH EASEMENT GRANTED BY PLAT D-110
 - ② STREET AND PUBLIC RIGHT-OF-WAY EASEMENT GRANTED BY DOCUMENT FILED 03-15-1951, BOOK D-172, PAGE 42.
- EXISTING EASEMENTS - OFFSITE**
- ③ 7' PUBLIC UTILITY EASEMENT GRANTED BY PLAT 97C-130
 - ④ PUBLIC WATER AND SEWER EASEMENT GRANTED BY DOCUMENT FILED 06-24-1994, BOOK 94-19, PAGES 5086-5090 PER PLAT 97C-130
 - ⑤ 20' PRIVATE ACCESS EASEMENT PER PLAT 95C-203
 - ⑥ 20' RIDING EASEMENT GRANTED BY PLAT D4-134
 - ⑦ 30' UTILITY EASEMENT GRANTED BY PLAT C8-70
- DEDICATIONS**
- ⑧ IRRIGATION DITCH TO BE DEDICATED TO THE MIDDLE RIO GRAND CONSERVANCY DISTRICT. AREA = 0.1436 ACRES ±
 - ⑨ PUBLIC STREET RIGHT-OF-WAY TO BE DEDICATED TO THE CITY OF ALBUQUERQUE. AREA = 1.1254 ACRES ±
- NEW EASEMENT**
- ⑩ 10' PUBLIC UTILITY EASEMENT TO BE GRANTED BY FORTHCOMING PLATTING ACTION

THE PURPOSE OF THIS REQUEST IS TO: 1) CONSOLIDATE UNPLATTED TRACT 65-A-1, A PORTION OF UNPLATTED TRACT 65-A-2, M.R.G.C.D. PROPERTY MAP No. 29, LOTS 15, 16 AND THE TRACT OF LAND RESERVED FOR SCHOOL, BLOCK F, LEEACRES AND A PORTION OF VACATED SOLAR ROAD (DRIVE) TO CREATE TRACT A; 2) DEDICATE THE ALIGNMENT OF SOLAR ROAD NW; 3) DEDICATE THE IRRIGATION DITCH; 4) DEMONSTRATE THE GRANTING OF EASEMENTS AS SHOWN ON THIS DRAWING

File Path: D:\WORK\2003\105-30-2003\105-30-2003.dwg
 Plot Date: 05-30-2003
 File Name: 31809SKETCH.DWG
 Plot Time: 1:34 pm



SKETCH PLAT
TRACT A, ALVARADO ELEMENTARY SCHOOL

SURVEYED BY	NO.	DATE	BY	REVISIONS		JOB NO.
				NO.	DATE	
R.C.W.						2003.180.9
T.N.T.						DATE 05-2003
C.G.C.						SHEET 1 OF 1