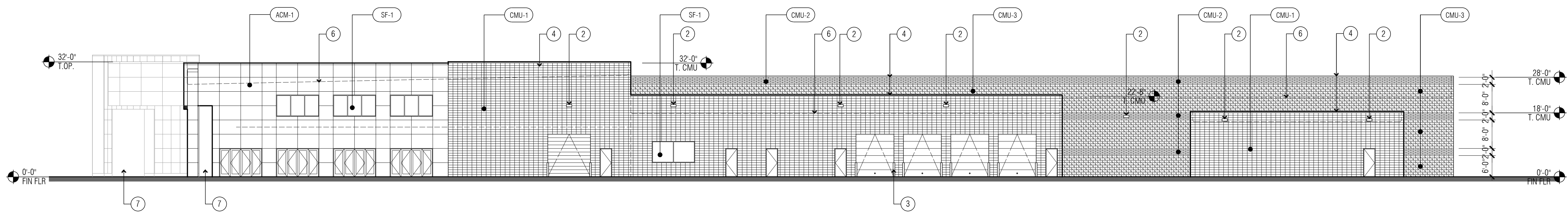
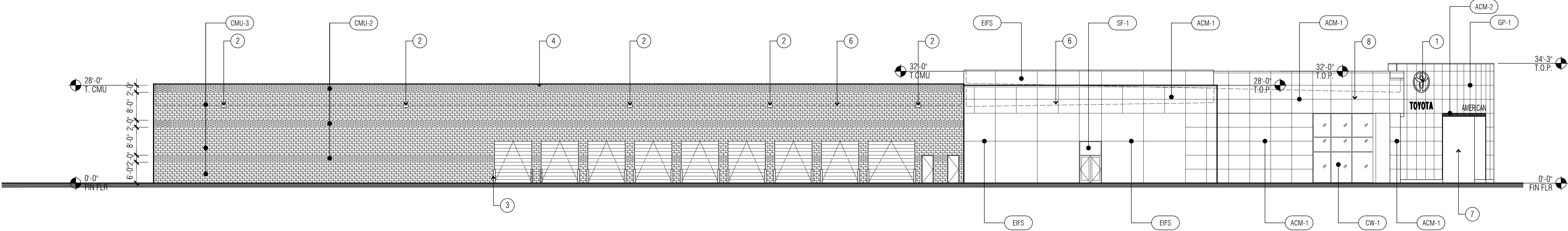


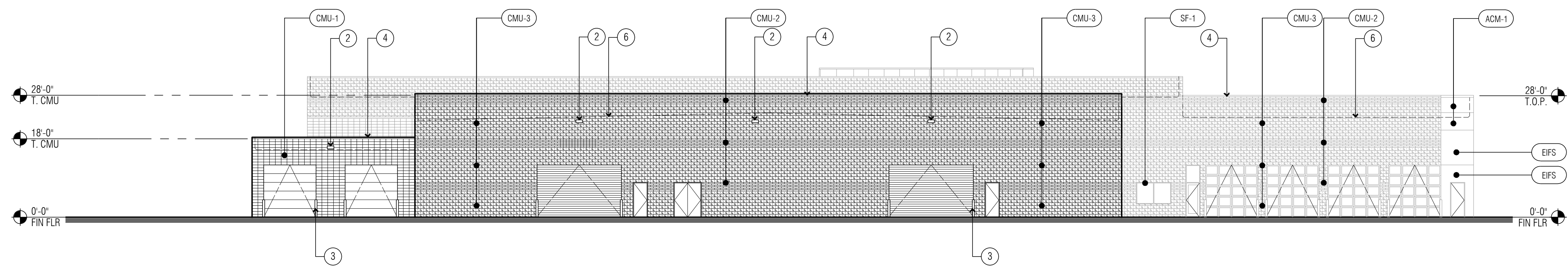
SOUTH ELEVATION



EAST ELEVATION



WEST ELEVATION



NORTH ELEVATION

FINISH LEGEND

SYM.	MATERIAL DESCRIPTION
ACM-1	MATERIAL: ALUMINUM COMPOSITE PANEL MANUF: REYNOLDBOND OR ALPOLIC SYSTEM: 4 MM THICK BONDED METAL PANEL - 3/4" REVEALS TESTED DRY OR RAINSCREEN SYSTEM WITH EXPOSED EXTRUSIONS TO MATCH PANELS COLOR: TOYOTA SILVER NOTE: FLASHINGS TO MATCH ADJACENT WALL PANELS
ACM-2	MATERIAL: ALUMINUM COMPOSITE PANEL MANUF: REYNOLDBOND OR ALPOLIC SYSTEM: 4 MM THICK BONDED METAL PANEL - 3/4" REVEALS TESTED DRY OR RAINSCREEN SYSTEM WITH EXPOSED EXTRUSIONS TO MATCH PANELS COLOR: TOYOTA RED NOTE: FLASHINGS TO MATCH ADJACENT WALL PANELS
ACM-3	MATERIAL: ALUMINUM COMPOSITE PANEL MANUF: REYNOLDBOND OR ALPOLIC SYSTEM: 4 MM THICK BONDED METAL PANEL - 3/4" REVEALS TESTED DRY OR RAINSCREEN SYSTEM WITH EXPOSED EXTRUSIONS TO MATCH PANELS COLOR: TOYOTA BLACK NOTE: FLASHINGS TO MATCH ADJACENT WALL PANELS
GP-1	MATERIAL: GLASS PORTAL MANUF: NOVUM STRUCTURES SYSTEM: SOLERA TRANSLUCENT GLAZING SYSTEM WITH STRUCTURAL STEEL SUPPORT FRAMING & ACM SURROUND
CW-1	MATERIAL: ALUMINUM CURTAIN WALL SYSTEM MANUF: KAWNEER SYSTEM: 1600 SYSTEM 1 SIZE: VARIES - SEE WINDOW FRAME ELEVS FINISH: PAINTED TOYOTA SILVER ALT. FINISH: #14 CLEAR ANODIZED ALUMINUM GLASS: 1" INSULATED LOW-E PPG SOLARBAN 60 CLEAR SOLAR CONTROL
CW-2	MATERIAL: ALUMINUM CURTAIN WALL SYSTEM MANUF: KAWNEER SYSTEM: 1600 SYSTEM 1 SIZE: VARIES - SEE WINDOW FRAME ELEVS FINISH: PAINTED TOYOTA SILVER ALT. FINISH: #14 CLEAR ANODIZED ALUMINUM GLASS: 1" INSULATED LOW-E PPG SOLARBAN 60 (2) SOLARBronze + CLEAR SHADE COEFF = .28
SF-1	MATERIAL: ALUMINUM STOREFRONT WINDOW MANUF: KAWNEER SYSTEM: TRIFAB 451T SIZE: 2'X 4'2" FRONT SET FINISH: PAINTED TOYOTA SILVER ALT. FINISH: #14 CLEAR ANODIZED ALUMINUM GLASS: 1" INSULATED LOW-E PPG SOLARBAN 60 CLEAR SOLAR CONTROL
SF-2	MATERIAL: ALUMINUM STOREFRONT WINDOW MANUF: KAWNEER SYSTEM: TRIFAB 451T SIZE: 2'X 4'2" FRONT SET FINISH: PAINTED TOYOTA SILVER ALT. FINISH: #14 CLEAR ANODIZED ALUMINUM GLASS: 1" INSULATED LOW-E PPG SOLARBAN 60 CLEAR SOLAR CONTROL
EIFS	MATERIAL: EXTERIOR INSULATION & FINISH SYSTEM MANUF: DRYVIT, SYNERGY, PLEKKO OR APPROVED COLOR: TO MATCH DRYVIT MOONLIGHT WHITE 612, SANDPEBBLE TEXTURE DRYVIT REFERENCE NO. - TOYAO61021 OR STO NA05-0056 LIGHT GREY
CMU-1	MATERIAL: GROUND FACE INTEGRAL COLOR CMU MANUF: UTILITY BLOCK CO OR EQUAL PRODUCT: 8" X 8" X 16" STACKED BOND COLOR: #910 WHITE SANDS MORTAR: TO MATCH BLOCK SEALER: OKON W-2
CMU-2	MATERIAL: GROUND FACE INTEGRAL COLOR CMU MANUF: UTILITY BLOCK CO OR EQUAL PRODUCT: 8" X 4" X 16" RUNNING BOND COLOR: #130 GRANITE MORTAR: TO MATCH BLOCK SEALER: OKON W-2
CMU-3	MATERIAL: SPLIT FACE INTEGRAL COLOR CMU MANUF: UTILITY BLOCK CO OR EQUAL PRODUCT: 8" X 8" X 16" RUNNING BOND COLOR: #820 ASHEN BLACK MORTAR: TO MATCH BLOCK SEALER: OKON W-2

GENERAL NOTES

1. ALL HOLLOW METAL DOORS AND FRAMES TO BE PAINTED TO MATCH ADJACENT WALL, UNO.
2. SEE STRUCTURAL FOR MASONRY CONTROL JOINT LOCATIONS.
3. TYVEK TO BE FURNISHED AND INSTALLED BY ACM FABRICATOR AND MEET AIR AND WATER INFILTRATION SPECIFICATIONS. WHEN ACM PANEL WAS TESTED TO MEET THE TOYOTA IMAGE USA II ACM SPECIFICATIONS. TYVEK INSTALLATION SHALL BE REVIEWED AND APPROVED BY TYVEK MANUFACTURERS REPRESENTATIVE PRIOR TO ACM INSTALLATION.

KEYNOTES

- 1 SIGNAGE
- 2 WALL MOUNTED LIGHT FIXTURE
- 3 TYPICAL BOLLARD W/ COVER
- 4 PREFINISHED METAL COPING
- 5 ROOF-MOUNTED MECHANICAL EQUIPMENT
- 6 LINE OF ROOF
- 7 OPEN
- 8 ALIGN REVEAL WITH CENTER OF MULLION
- 9 ADDRESS NUMERALS BY G.C.
- 10 TRAFFIC CONTROL LIGHT

JOHN MAHONEY ARCHITECT
850 W. ELLIOT ROAD, #108
TEMPE, ARIZONA 85283
P 480.345.8457 F 480.345.1759

John Mahoney
PRELIMINARY ONLY
NOT FOR CONSTRUCTION
11-4-17

LARRY H. MILLER
AMERICAN TOYOTA
5995 ALAMEDA BLVD NE
ALBUQUERQUE, NEW MEXICO

Larry H. Miller
American Toyota Albuquerque

PROJECT NO. 1325
ISSUE DATE: 10/30/14

EXTERIOR ELEVATIONS

A200