

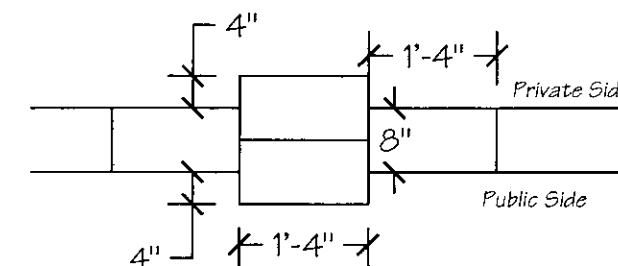
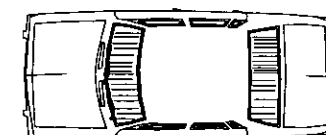
#### SUGGESTED PLANT LIST

- 1. Curl-Leaf Mountain Mahogany
- 2. Spineless prickly Pear
- 3. Bird of Paradise
- 4. Red Yucca
- 5. Autumn sage
- 6. Broom Dalea

Notes:

- Homeowners Association will be responsible for irrigation and maintenance.
- Plant Material will be located along entire stretch of wall, not just at wall accent locations.
- Crusher Fines will be used as mulch along streetscape.

Wall/Landscape Plan

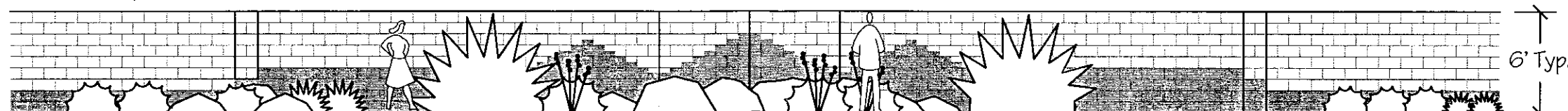


Column Plan View  
1/2" = 1'-0"

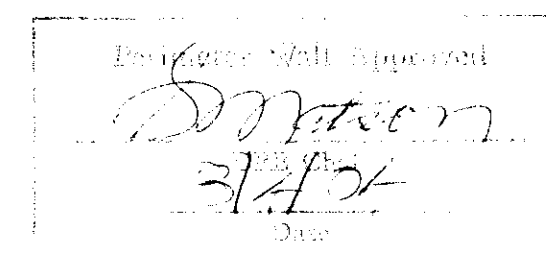
2 Block Width Columns 60' O.C.

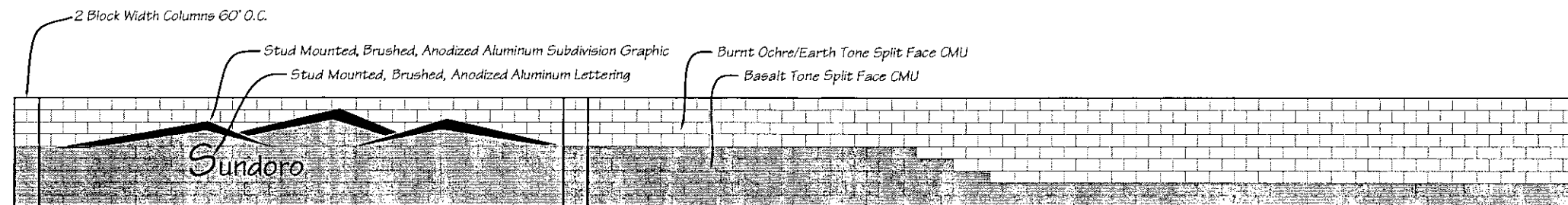
Burnt Ochre/Earth Tone Split Face CMU

Basalt Tone Split Face CMU



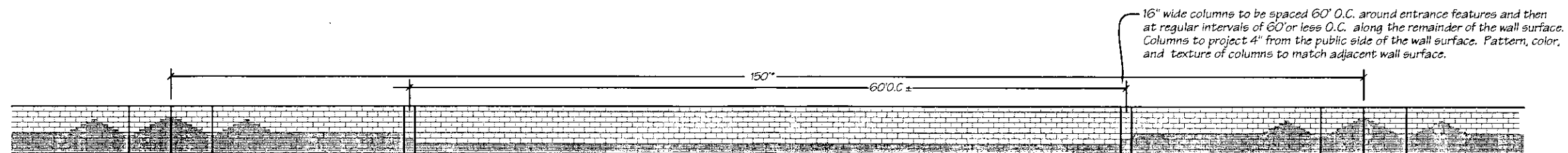
Wall/Landscape Elevation





Scale: 1/16"=1.0' (11x17)

TO BE LOCATED AT ~~VEGUVIUS ENTRY (EAST SIDE)~~  
SUNDORO STREET AND  
MARAPI STREET ENTRANCES



Scale: 1/16"=1.0' (11x17)

\* Wall Accents to Vary Between 150' and 300'