

PROJECT 1002964

GENERAL NOTES:
 A. PROVIDE CONTROL JOINT @ 5'-0" O.C. AND EXPANSION JOINTS @ 20'-0" O.C. AT ALL NEW CONCRETE PAVING.

- KEYED NOTES:**
- [1] CMU DUMPSTER ENCLOSURE WITH STUCCO FINISH.
 - [2] 4" THICK CONCRETE SIDEWALK WITH CONTROL JOISTS @ 5'-0" O.C. AND EXPANSION JOINTS @ 20'-0" O.C.
 - [3] 6" HIGH CONCRETE CURB.
 - [4] 9'x18' PARKING SPACES.
 - [5] LANDSCAPING WITH DRIP IRRIGATION.
 - [6] HC RAMP.
 - [7] HC PAVEMENT SIGN, TYPICAL OF 4.
 - [8] HC AISLE STRIPING.
 - [9] HC PARKING SIGN, TYPICAL OF 4.
 - [10] 2 1/2" ASPHALTIC CONCRETE PAVING OVER 7" OF AGGREGATE BASE COURSE.
 - [11] NEW CITY STANDARD CURB CUT.
 - [12] EXISTING FIRE HYDRANT.
 - [13] 6'-0" HIGH WROUGHT IRON SECURITY FENCE.
 - [14] AUTOMATED SLIDING WROUGHT IRON GATE.
 - [15] WROUGHT IRON PEDESTRIAN GATE, 3'W X 6'H.
 - [16] OFFICE OF INSPECTOR GENERAL DESIGNATED VISITOR PARKING.
 - [17] SITE LIGHT WITH CONCRETE POLE BASE.
 - [18] MONUMENT SIGN.
 - [19] BIKE RACK.
 - [20] PAINT CURB RED WITH LETTERING STATING "FIRE LANE NO PARKING."
 - [21] NEW CONCRETE CHANNEL.
 - [22] CONCRETE PATIO.
 - [23] "NO PARKING" AREA WITH STRIPING.
 - [24] EXISTING 10' WIDE PRIVATE DRAINAGE EASEMENT.
 - [25] NEW 5' WIDE CITY SIDEWALK.
 - [26] 5' X 5' CONCRETE PAD.
 - [27] ELECTRICAL TRANSFORMER ON CONCRETE PAD WITH BOLLARDS PER PNM SPECIFICATIONS.
 - [28] 8" CMU MONUMENT SIGN WITH 2-COAT STUCCO FINISH TO MATCH BUILDING OVER BUILDING PAPER AND WIRE MESH.
 - [29] 6" HIGH INDIVIDUAL CLEAR ANODIZED ALUMINUM LETTERS. PROVIDE LETTERING FOR EACH SIDE OF MONUMENT AS NOTED.
 - [30] 8" CMU DUMPSTER ENCLOSURE WITH 2-COAT STUCCO FINISH TO MATCH BUILDING OVER BUILDING PAPER AND WIRE MESH.
 - [31] 4" DIA. PIPE, PAINTED TO MATCH BUILDING.
 - [32] TUBE STEEL GATES WITH METAL PANEL INSERTS, PAINTED TO MATCH BUILDING.

LEGAL DESCRIPTION
 LOT 21, RICHFIELD PARK, WITHIN THE ELENA GALLEGOS GRANT, PROJECTED SECTION 14, TOWNSHIP 11 NORTH, RANGE 3 EAST, NEW MEXICO PRINCIPLE MERIDIAN, CITY OF ALBUQUERQUE, BERNALILLO COUNTY, NEW MEXICO.

ADDRESS: 8909 ADAMS STREET NE
TOTAL SITE AREA: 1.094 ACRES
ZONE MAP: C-17-Z

PARKING REQUIREMENTS

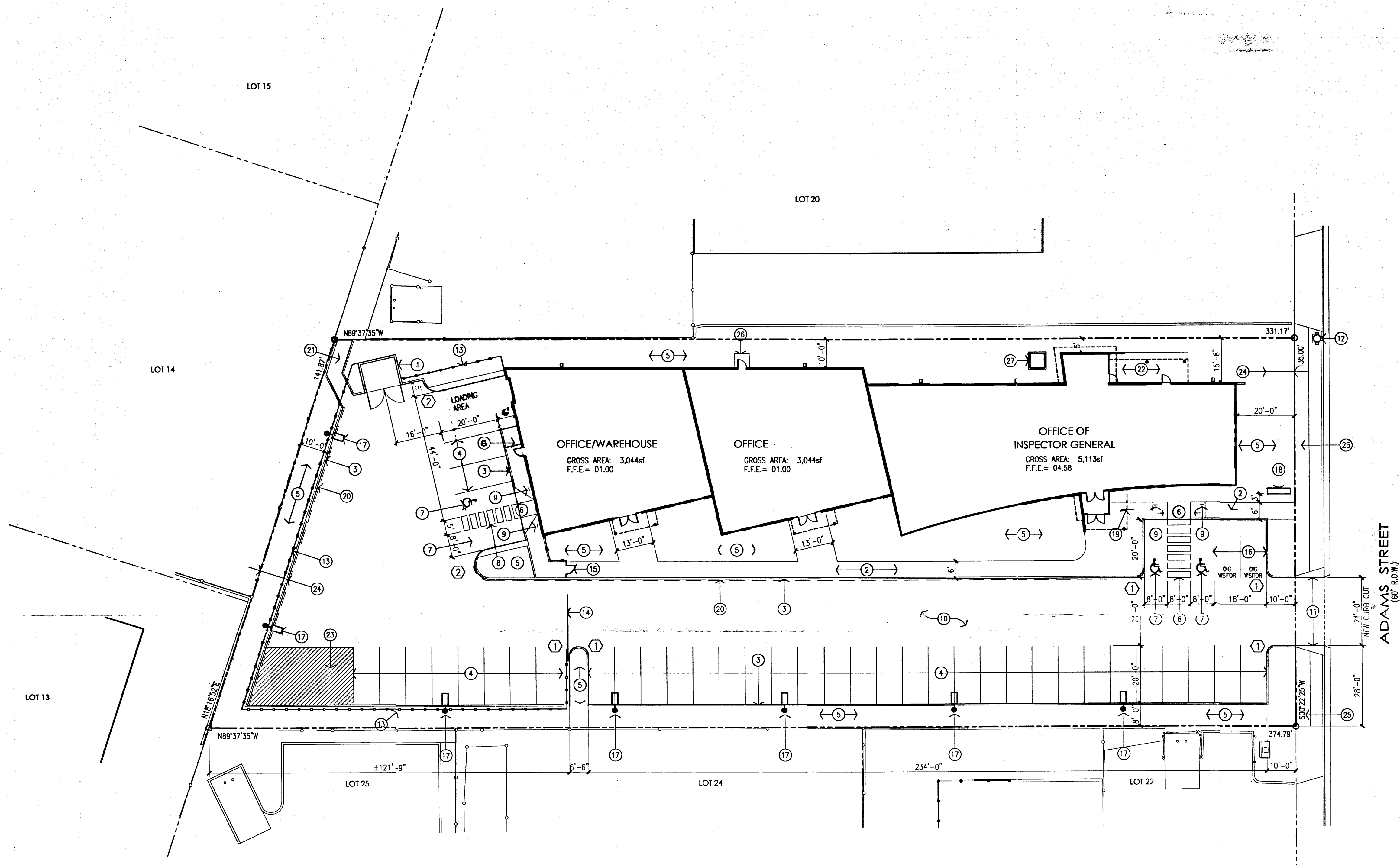
OFFICE OF INSPECTOR GENERAL:	OFFICE TOTAL LEASABLE AREA:
TOTAL LEASABLE AREA: 3,379 / 200 = 17	3,379 / 200 = 17
FUTURE OFFICE WAREHOUSE:	OFFICE TOTAL LEASABLE AREA:
ASSUME 1,200sf OFFICE: 1,200 / 200 = 6	3,000 / 200 = 15
ASSUME 1,844sf WAREHOUSE: 1,844 / 2,000 = 1	
TOTAL SPACES REQUIRED: 38 SPACES	
TOTAL SPACES PROVIDED: 42 SPACES INCLUDING 4 HC ACCESSIBLE SPACES	

SITE LIGHTING NOTES
 THE LOCATION OF THE LIGHTING FIXTURES TOGETHER WITH ITS CUT-OFF ANGLE SHALL BE SUCH THAT IT DOES NOT DIRECTLY SHINE ON ANY PUBLIC RIGHT-OF-WAY.

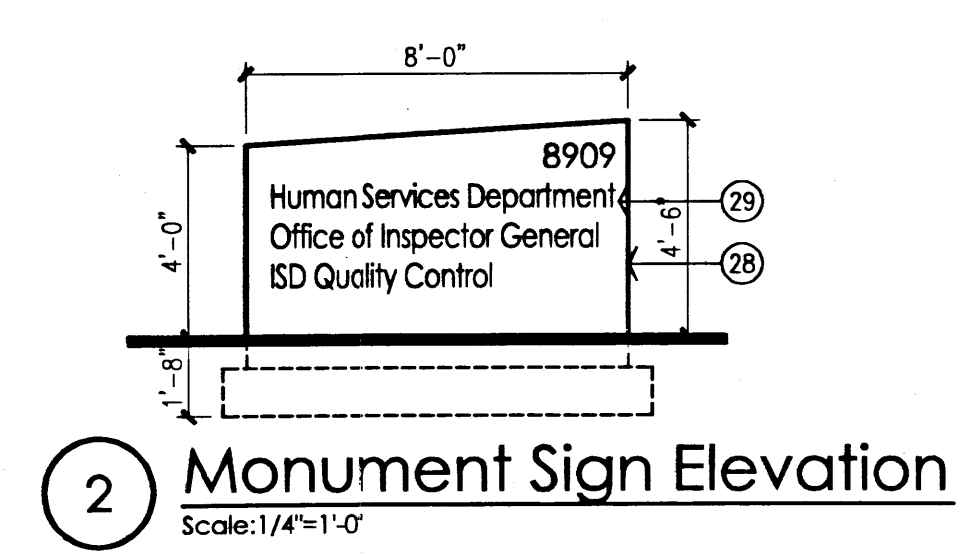
THE MAXIMUM HEIGHT OF A LIGHT POLE MEASURED FROM THE FINISH GRADE TO THE TOP OF THE POLE SHALL BE 20 FEET.

- RADIUS INFORMATION**
- ① RADIUS = 3'-0"
 - ② RADIUS = 5'-0"

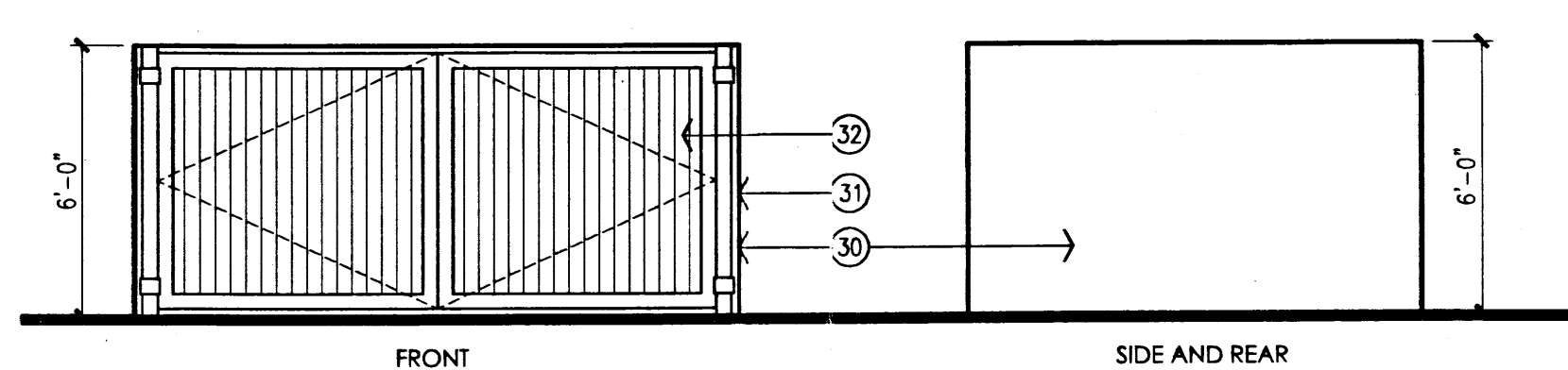
APD PLANS CHECKING OFFICE
 804-3611
 APPROVED
 R.C. Juch 7-24-03



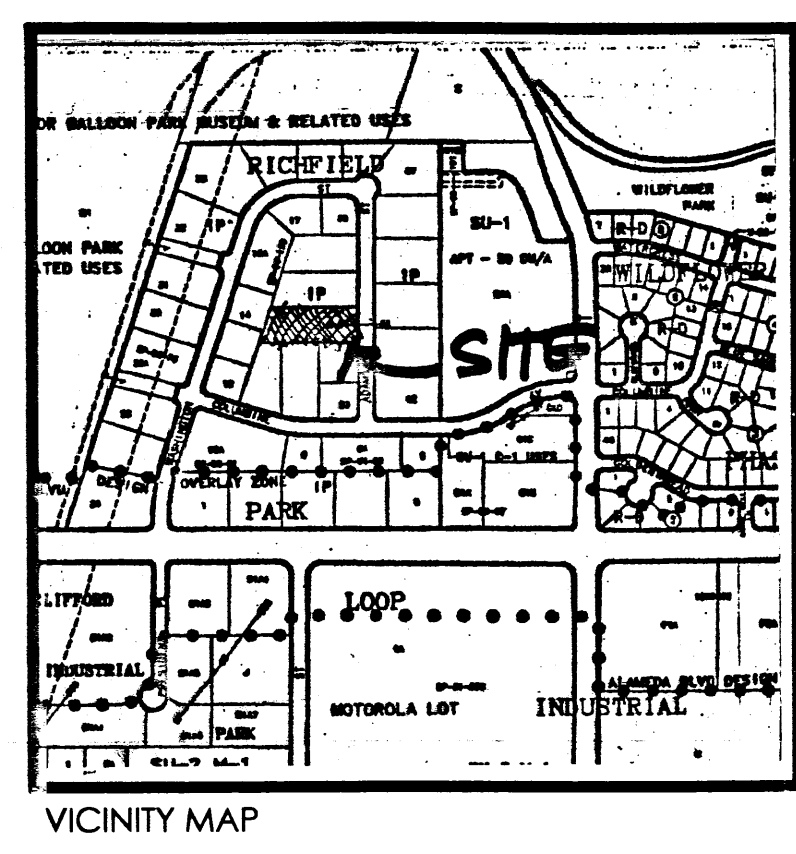
① Site Plan
 Scale: 1"=20'-0"



② Monument Sign Elevation
 Scale: 1/4"=1'-0"



③ Dumpster Enclosure Elevation
 Scale: 1/4"=1'-0"



PROJECT NUMBER: 1002964
 Application Number: 03 DRB 0543

DRB SITE DEVELOPMENT PLAN APPROVAL:

<i>Paul J. Davis</i>	10-01-03
Traffic Engineering, Transportation Division	Date
<i>Roger A. Ameen</i>	10/1/03
Utilities Development	Date
<i>Christina Sandoval</i>	10/1/03
Parks and Recreation Department	Date
<i>Bruce S. Byham</i>	10/1/03
City Engineer	Date
<i>Michael Hutton</i>	9-24-03
Solid Waste Management	Date
<i>Sheran Watson</i>	10/1/03
DRB Chairperson, Planning Department	Date

revision _____
 by _____
 date _____
 rev

Mullen Heller Architecture P.C.
 1104 Hermosa Drive SE
 Albuquerque 87108
 505 268 4144 [p]
 505 268 4244 [f]

job number 03-12
 drawn by JDH/CLV
 project manager JDH
 date 09/22/03

project title Office of Inspector General
 8909 Adams Street NE
 Albuquerque, NM
 sheet title Site Development Plan for Building Permit
 sheet A001