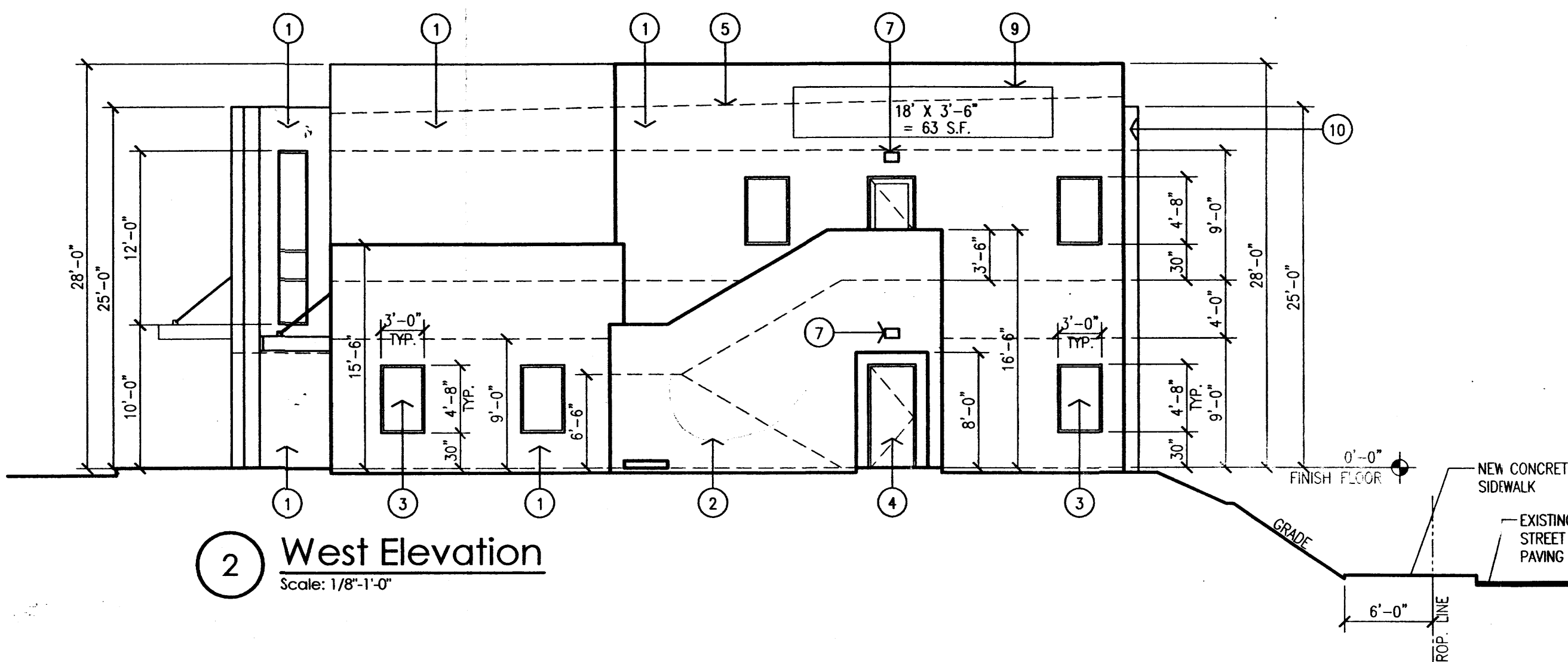
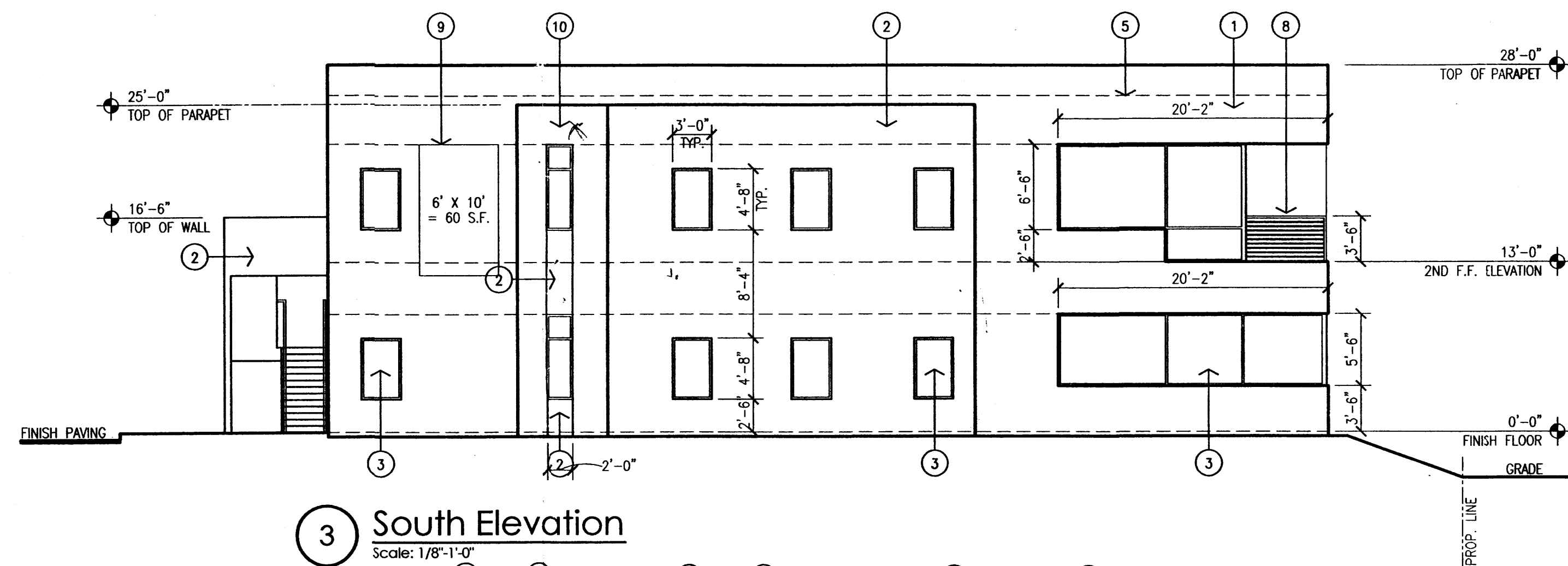


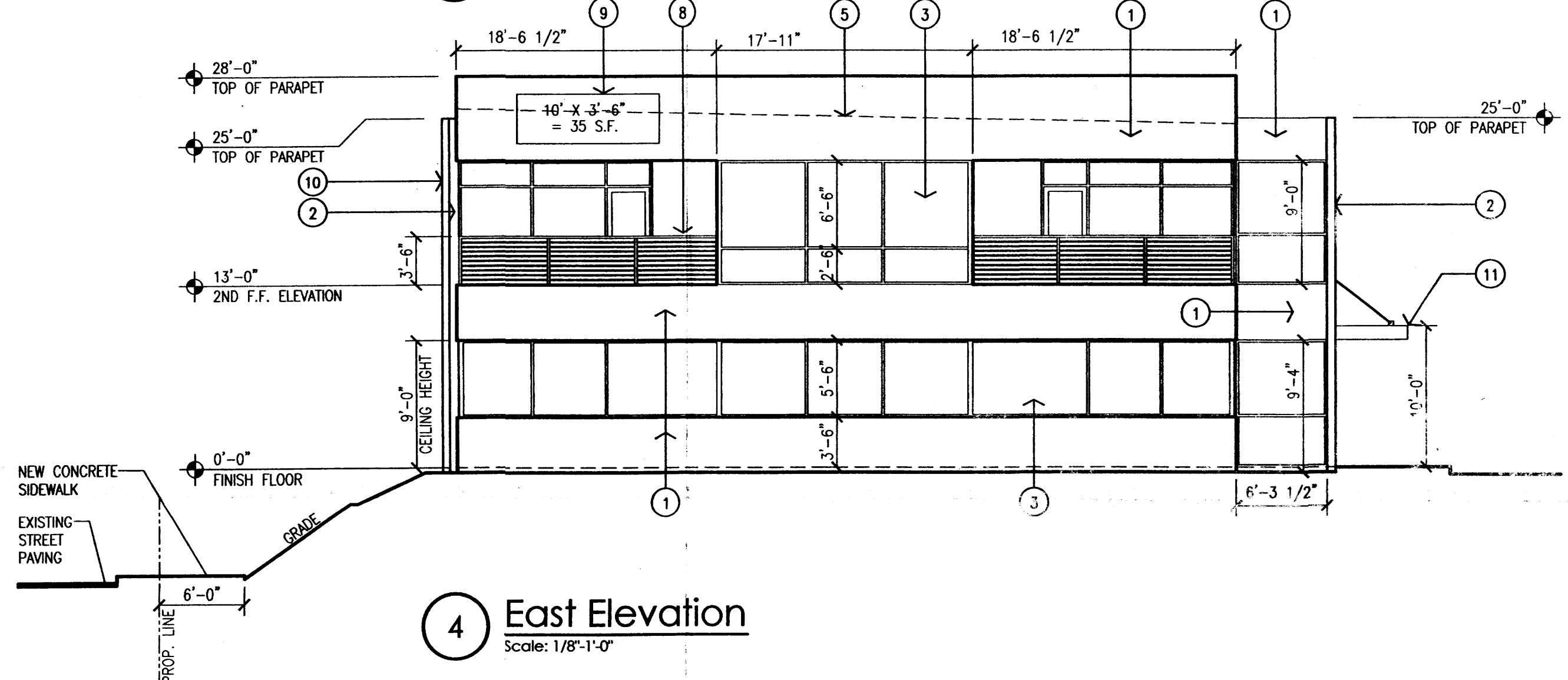
1 North Elevation
Scale: 1/8"-1'-0"



2 West Elevation
Scale: 1/8"-1'-0"



3 South Elevation
Scale: 1/8"-1'-0"



4 East Elevation
Scale: 1/8"-1'-0"

GENERAL NOTES:
A.

- KEYED NOTES:
- [1] STUCCO COLOR 1-TAUPE.
 - [2] STUCCO COLOR 2- GREY-GREEN.
 - [3] ALUMINUM STOREFRONT- CLEAR ANODIZED WITH 1" CLEAR INSULATED GLASS.
 - [4] HOLLOW METAL DOOR AND FRAME, PAINTED.
 - [5] LINE OF ROOF AND STRUCTURE BEYOND.
 - [6] SHEETMETAL COLLECTOR BOX AND DOWNSPOUT.
 - [7] WALL-MOUNTED LIGHT FIXTURE.
 - [8] STEEL GUARDRAIL- PAINTED TO MATCH STOREFRONT.
 - [9] SIGNAGE LOCATION WITH INDIVIDUAL BACK-LIT CHANNEL LETTERS.
 - [10] STUCCO COLOR 3- DARK GREY-GREEN.
 - [11] STEEL CANOPY- PAINTED TO MATCH STOREFRONT.

revision	
by	
date	
rev	A A A A A

MH
Mullen Heller
Architecture P.C.
1015 Tijeras Avenue NW
Suite 220
Albuquerque 87102
505 268 4144[p]
505 268 4244 [f]

project title	05-39
job number	MAG
drawn by	MMM
project manager	MMM
date	06/03/04

project title
Proposed Office Building- EPC Admin. Amendment
3780 The American Road NW
Albuquerque, New Mexico
sheet title
Exterior Elevations