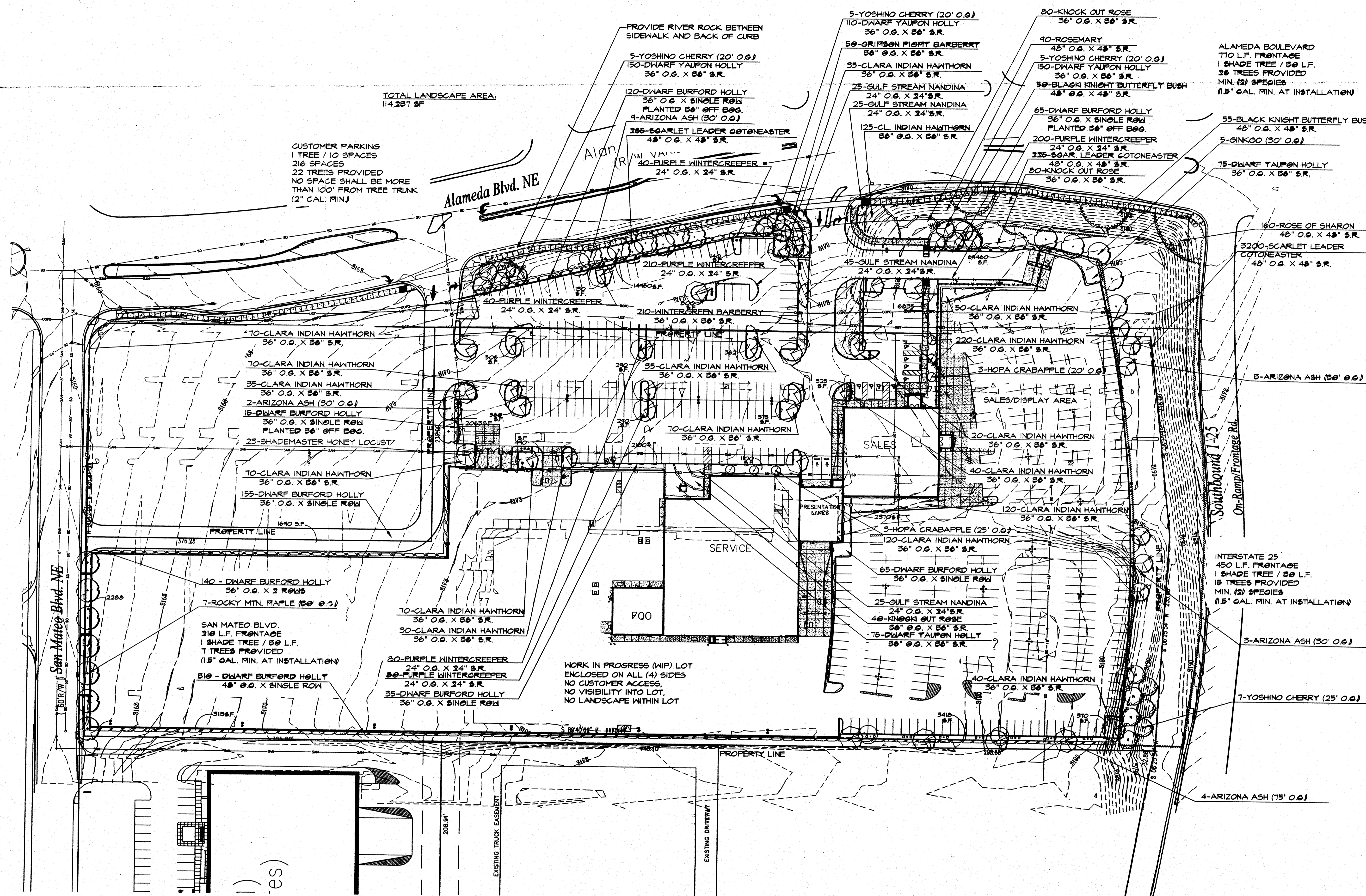


FILE # - 030509
NOT RELEASED FOR CONSTRUCTION

APPROVAL

REVISIONS		
REV. NO.	DATE	DESCRIPTION
00	DEC 05	90% COORDINATION
12	JAN 04	95% DISTRIBUTION
17	FEB 04	Other Comments



WATER USE	Quantity	Botanical Name	Common Name	Caliper	Height	Spread	Root	Comment
M	7	Acer glabrum	Rocky Mountain Maple	3-3.5"	14-16'	7-8'	B4B	Straight trunk; dense, uniform branching; matched
L	15	Fraxinus velutina	Arizona Ash	1-1.5"	7-8'	3-4'	B4B/cont.	Straight trunk; dense, uniform branching; matched
L	23	Gleditsia triacanthos 'Shademaster'	Shademaster Honeylocust	3-3.5"	12-14'	6-7'	B4B	Straight trunk; branching begins above 6'
L	5	Ginkgo biloba	Ginkgo	3-3.5"	12-14'	6-7'	B4B	Straight trunk; branching begins above 6'
L	6	Malus x 'Hopa'	Hopa Crabapple	3-3.5"	8-10'	4-5'	B4B	Straight trunk; branching begins above 6'
M	22	Prunus x yedoensis	Yoshino Cherry	3-3.5"	10-12'	8-9'	B4B	Standard; straight trunk; branching begins at 3'; balanced head
L	210	Berberis julianae	Wintergreen Barberry		18-24"	12-15"	3 gal	Dense form; good color; well rooted in pot
L	50	Berberis 'Crimson Pygmy'	Crimson Pygmy Barberry		6-9"	6-9"	1 gal	Dense branching; well rooted in pot; self supporting stems
L	105	Buddleia davidii 'Black Knight'	Black Knight Butterfly-bush		21-24"	15-18"	3 gal	Dense branching; well rooted in pot; self supporting stems
L	905	Ilex cornuta 'Burfordii Nana'	Dwarf Burford Holly		18-24"	15-18"	3 gal	Dense form; good color; well rooted in pot
M	410	Ilex vomitoria 'Nana'	Dwarf Yaupon Holly		12-15"	12-15"	3 gal	Dense form; good color; well rooted in pot
M	120	Nandina domestica 'Gulf Stream'	Gulf Stream Nandina		12-15"	12-15"	3 gal	Dense form; good color; well rooted in pot
M	1235	Raphiolepis indica 'Clara'	Clara Indian Hawthorn		12-15"	15-18"	3 gal	Dense form; good color; well rooted in pot
M	200	Rosa x 'Knockout'	Knockout Rose		15-18"	18-24"	3 gal	Full to ground; dense branching; self-supporting, sturdy stems
L	3690	Cotoneaster salicifolius 'Scarlet Leader'	Scarlet Leader Cotoneaster		6-9"	9-12"	1 gal	Dense branching; healthy color; uniform growth habit
L	860	Eucynymus fortunei 'Coloratus'	Purple Wintercreeper		6-9"	6-9"	1 gal	Full in pot; 3 runners min., each 6" min. in length
L	90	Rosemarinus officinalis	Rosemary		6-9"	12-15"	1 gal	All plants from one source; healthy color; uniform branching
M	5635 sq. ft.	Festuca arundinacea 'Rebel II'	Rebel II Fescue				sod	dark green color; free from weeds.

SITE DATA:
TOTAL SITE AREA = 412,565 SQ.FT.
RINUS BUILDING AREA = 58,944.8 SQ.FT.
RINUS WIP AREA = 155,214.2 SQ.FT.
TOTAL NET SITE AREA = 298,405.5 SQ.FT.

TOTAL REQUIRED LANDSCAPE AREA SHALL BE A MINIMUM OF 15% OF TOTAL NET LOT AREA

TOTAL REQUIRED LANDSCAPE AREA = 52,761.325 SQ.FT.

TOTAL LANDSCAPE AREA PROVIDED = 57,564 SQ.FT.

TURF AREA (MAXIMUM 20% OF LANDSCAPE)
TOTAL LANDSCAPE PROVIDED 57,564 SQ.FT. X 20% = 11,512.8 SQ.FT. ALLOWED.
5405 SQ.FT. PROVIDED (13%)

RULGH FOR PLANTINGS SHALL BE HARDWOOD MULCH. PLANTING BEDS AS SHOWN ARE INTENDED TO BE FULLY COVERED WITH SHRUBS/GROUNDCOVERS AT MATURITY WITH NO EXPANSION OF UNCOVERED MULCH.

STATEMENT OF WATER USE COMPLIANCE

ALL LANDSCAPE AREAS WILL BE IRRIGATED WITH AN AUTOMATIC IRRIGATION SYSTEM. THE IRRIGATION SYSTEM WILL BE DESIGNED FOR EFFICIENT USE OF WATER IN THE LANDSCAPE AS REQUIRED IN ARTICLE 6-1-1-4 OF THE ALBUQUERQUE CODE OF ORDINANCES. THE SYSTEM WILL BE DESIGNED/PROGRAMMED SUCH THAT THE WATERING RESTRICTIONS IDENTIFIED IN 6-1-1-5 WILL BE MET. A PLAN WILL BE SUBMITTED WITH THE APPLICATION FOR PERMIT FOR PLANNING DEPARTMENT STAFF REVIEW.

RESPONSIBILITY OF MAINTENANCE

CARMAX WILL ASSUME RESPONSIBILITY TO MAINTAIN ALL LANDSCAPE AND IRRIGATION FOR SUCH MATERIAL SHOWN ON THIS PLAN. MAINTENANCE WILL OCCUR ON A WEEKLY BASIS OR AS NECESSARY TO MAINTAIN AN AESTHETIC APPEARANCE.

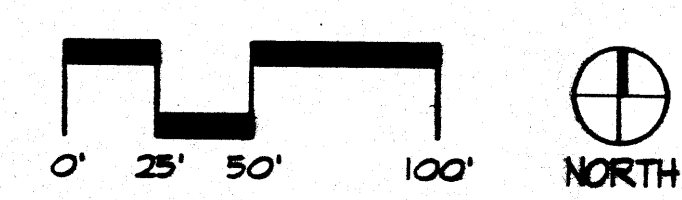
POLLEN ORDINANCE REQUIREMENTS

ALL PLANTS USED FOR THIS PROJECT HAVE BEEN CHOSEN FROM THE RECOMMENDED PLANT LIST FOR THE ALBUQUERQUE POLLEN CONTROL DISTRICT AND AS REQUIRED BY THE ALBUQUERQUE POLLEN CONTROL ORDINANCE. NO PLANTS IDENTIFIED AS 'REGULATED PLANTS' WILL BE USED AS SPECIFIED IN SECTION 4-1-2-3 OF THE ALBUQUERQUE POLLEN CONTROL ORDINANCE.

H = HIGH WATER USE REQUIREMENTS
M = MODERATE WATER USE REQUIREMENTS
L = LOW WATER USE REQUIREMENTS

WATER USE REQUIREMENTS LISTED PERTAIN TO THE PERIOD AFTER ESTABLISHMENT (TYPICALLY ONE FULL GROWING SEASON).

A LANDSCAPE DEVELOPMENT PLAN
LS-1 SCALE: 1"=50'-0"



CARMAX
THE AUTO SUPERSTORE

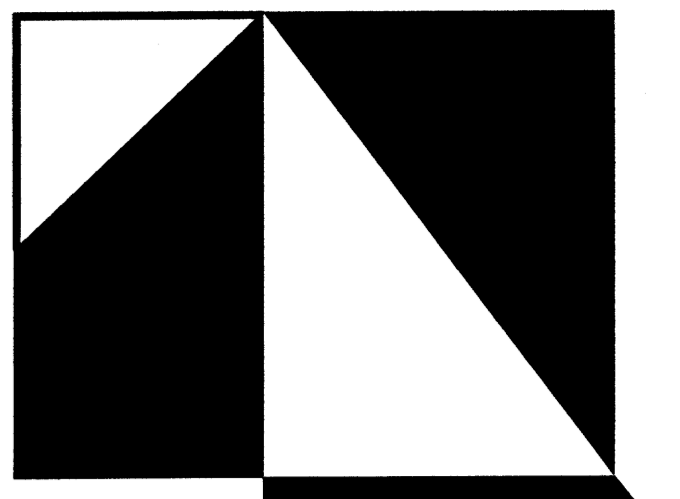
CARMAX THE AUTO SUPERSTORE, INC.
4400 COX ROAD
RICHMOND, VA 23260
(800) 747-4444

ALBUQUERQUE, NM STORE NO. 7194

PROJECT NO 20-02062.02
DATE 12 JANUARY 2004
SHEET TITLE

LANDSCAPE DEVELOPMENT PLAN

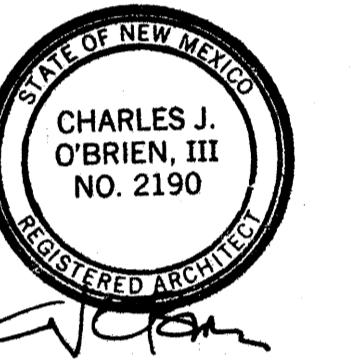
SHEET NO **LS-1**



**PIEPER
O'BRIEN
HERR
ARCHITECTS**

3000 ROYAL BOULEVARD SOUTH
ALPHARETTA, GEORGIA 30022
770.568.1706 FAX: 568.1786

THIS DRAWING IS THE PROPERTY OF PIEPER O'BRIEN HERR ARCHITECTS LTD AND IS NOT TO BE REPRODUCED IN WHOLE OR IN PART. IT IS NOT TO BE USED ON ANY OTHER PROJECT AND SHALL BE RETURNED UPON REQUEST. COPY- RIGHT AS DATED PIEPER O'BRIEN HERR ARCHITECTS LTD. NOT VALID UNLESS SIGNED AND SEALED.

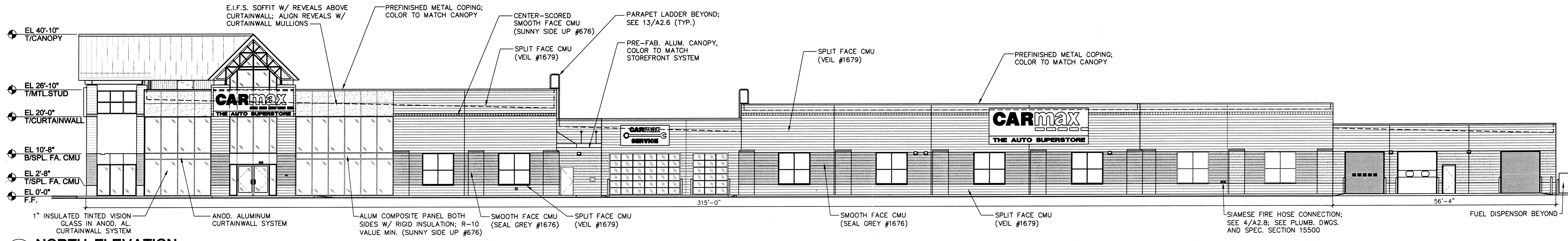


RELEASED FOR CONSTRUCTION

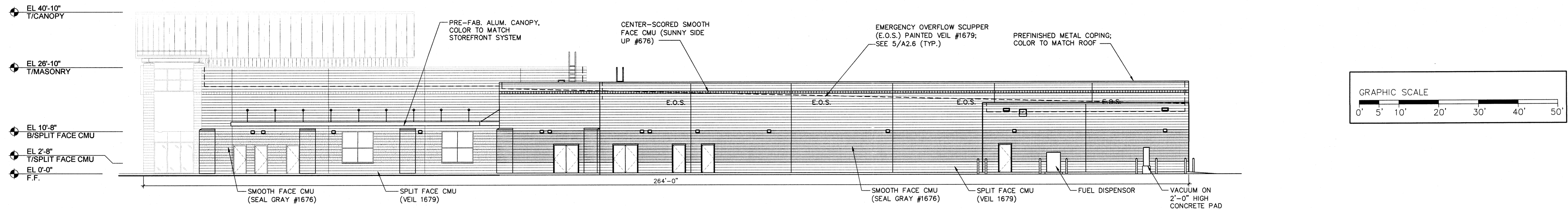
APPROVAL

REVISIONS

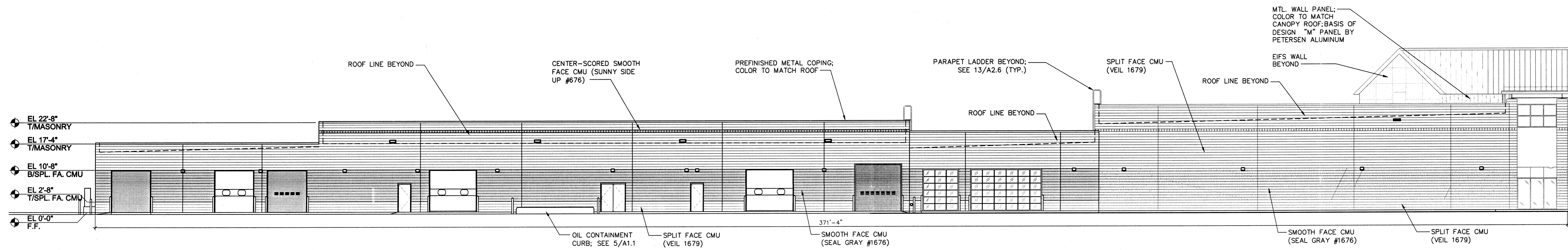
REV. NO.	DATE	DESCRIPTION
12	JAN.2004	90% Distribution
27	FEB.2004	100% Construction Documents



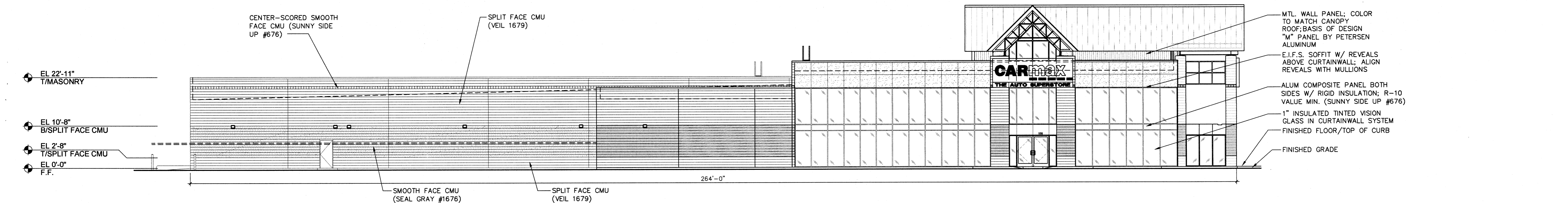
8 NORTH ELEVATION
SCALE: 3/32" = 1'-0"



15 WEST ELEVATION
SCALE: 3/32" = 1'-0"



22 SOUTH ELEVATION
SCALE: 3/32" = 1'-0"

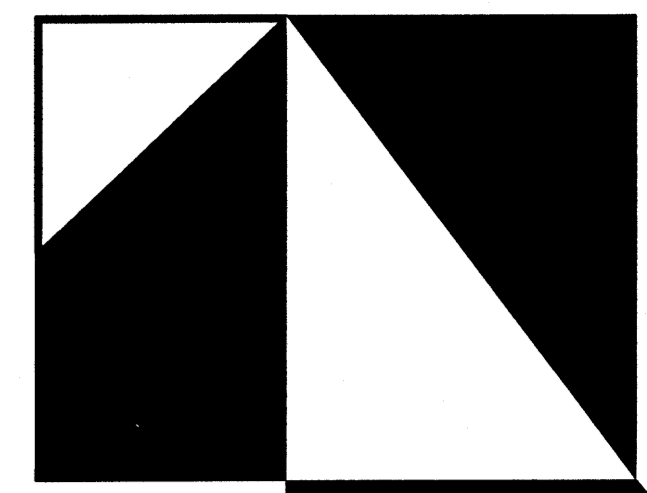


29 EAST ELEVATION
SCALE: 3/32" = 1'-0"

CARmax
THE AUTO SUPERSTORE
ALBUQUERQUE, NM STORE NO. 7194

PROJECT NO 20-02062.02
DATE 12.JAN.2004
SHEET TITLE BUILDING ELEVATIONS

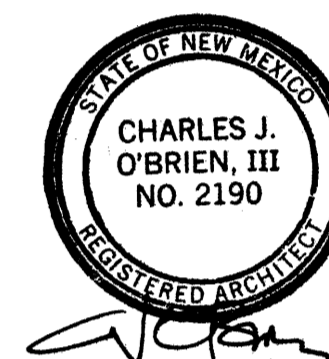
SHEET NO **A3.0**



**PIEPER
O'BRIEN
HERR**
ARCHITECTS

3000 ROYAL BOULEVARD SOUTH
ALPHARETTA, GEORGIA 30022
770.569.1706 FAX.569.1786

THIS DRAWING IS THE PROPERTY OF PIEPER O'BRIEN HERR ARCHITECTS LTD AND IS NOT TO BE REPRODUCED IN WHOLE OR IN PART. IT IS NOT TO BE USED ON ANY OTHER PROJECT AND SHALL BE RETURNED UPON REQUEST. COPYRIGHT AS DATED PIEPER O'BRIEN HERR ARCHITECTS LTD, NOT VALID UNLESS SIGNED AND SEALED.

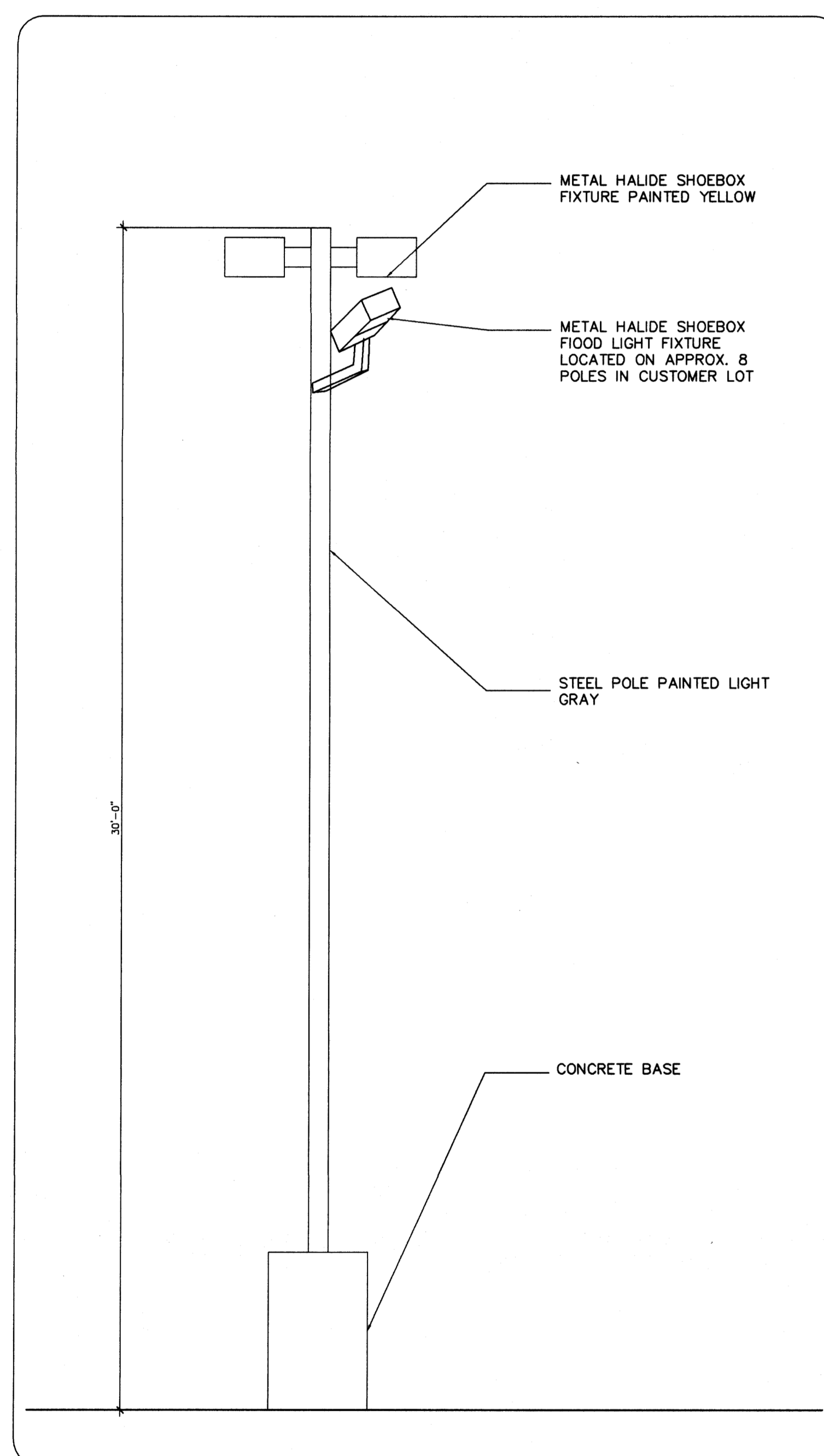


RELEASED FOR CONSTRUCTION

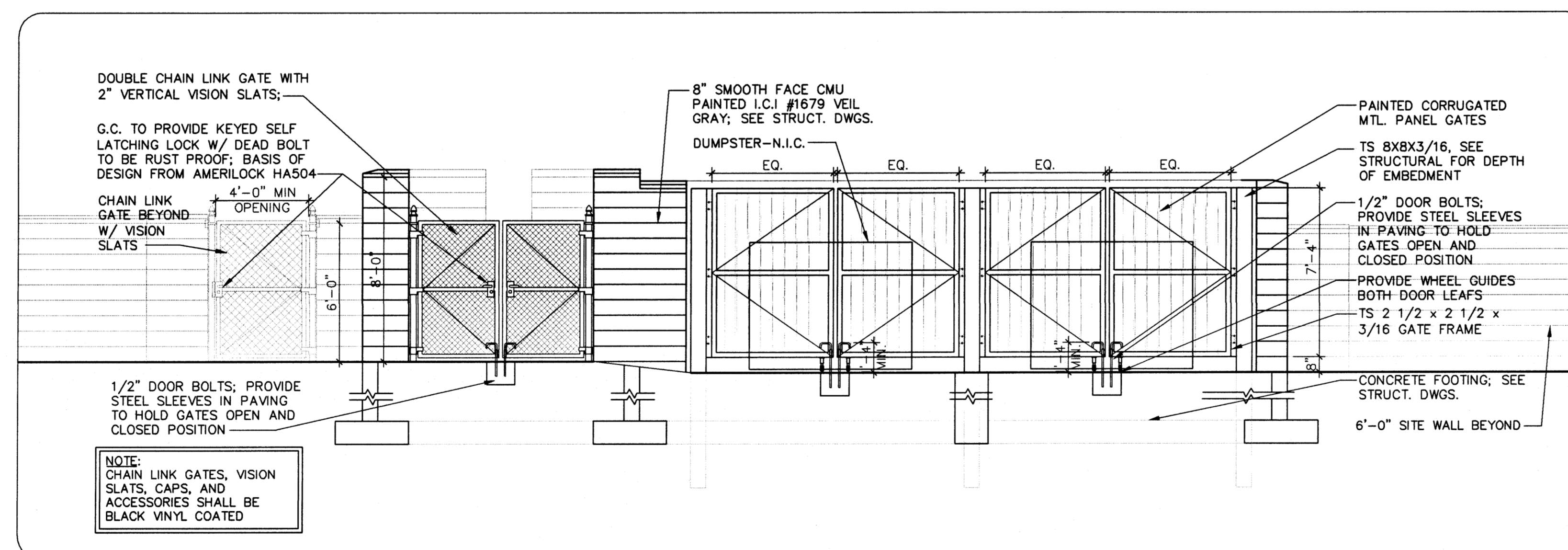
APPROVAL

REVISIONS

REV. NO	DATE	DESCRIPTION
12	JAN.2004	90% Distribution
27	FEB.2004	100% Construction Documents



22 TYPICAL SITE LIGHTING PLAN
A3.1 SCALE: 3/8" = 1'-0"



23 ELEVATION - DUMPSTER AND TIRE ENCLOSURE
A3.1 SCALE: 1/4" = 1'-0"

CARMAX
THE AUTO SUPERSTORE

CARMAX THE AUTO SUPERSTORE, INC.
1800 OAK ROAD RICHMOND, VA 23000
1800 OAK ROAD

ALBUQUERQUE, NM STORE NO. 7194

PROJECT NO 20-02062.02

DATE 12.JAN.2004

SHEET TITLE

LIGHTING AND DUMPSTER
ELEVATIONS

SHEET NO **A3.1**

