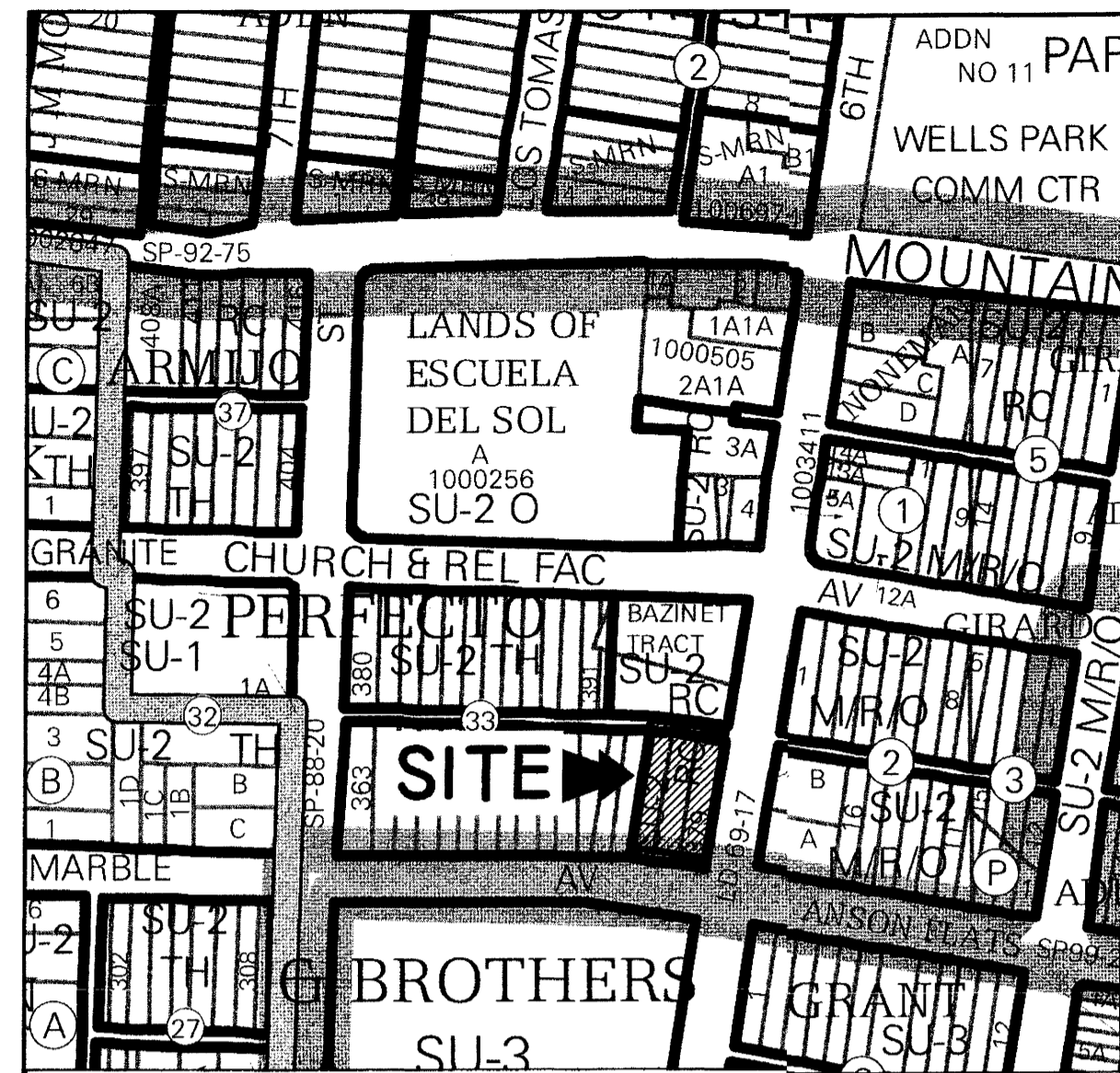


SKETCH PLAT  
 LOTS 1, 2 AND 3  
 MARBLE STREET TOWNHOME  
 WITHIN  
 CITY OF ALBUQUERQUE  
 BERNALILLO COUNTY, NEW MEXICO  
 OCTOBER 2015



VICINITY MAP J-14-Z

1"=200'

LEGAL DESCRIPTION

Lots numbered Three-Hundred Seventy-seven (377), Three Hundred Seventy-eight (378) and Three Hundred Seventy-nine (379) in Block numbered Thirty-three (33) of the Perfecto Armijo and Brothers Addition to the City of Albuquerque, New Mexico, as the same are shown and designated on the Map of said Addition filed in the Office of the Probate Clerk and Ex-Officio Recorder of Bernalillo County, New Mexico, on the 8th of July, 1887 and contains 0.2450 acres, more or less.

SUBDIVISION DATA

GROSS ACREAGE . . . . . 0.2450 AC.  
 ZONE ATLAS NO. . . . . J-14-Z  
 NO. OF EXISTING LOTS . . . . . 3 LOTS  
 NO. OF LOTS CREATED . . . . . 3 LOTS  
 DATE OF SURVEY . . . . . MARCH, 2006

PURPOSE OF PLAT

The purpose of the Plat is to re-plot 3 lots (Lot 377, 378 and 379 on Block 33) into a different configuration as shown on this sketch plat (Lots 1, 2 and 3). Two (2) existing structures within Lots 1 and 2 will be demolished and two (2) new townhomes will be built.

OWNERS

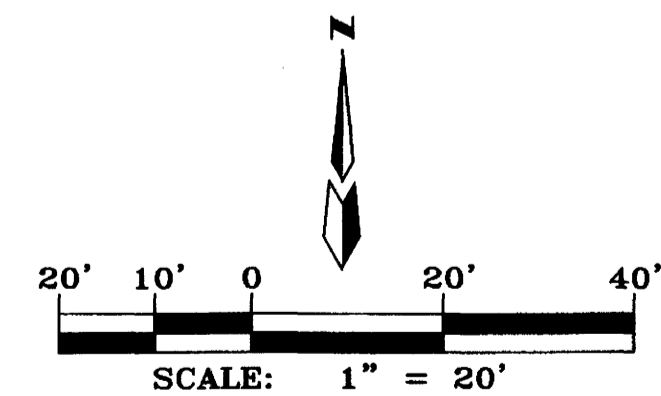
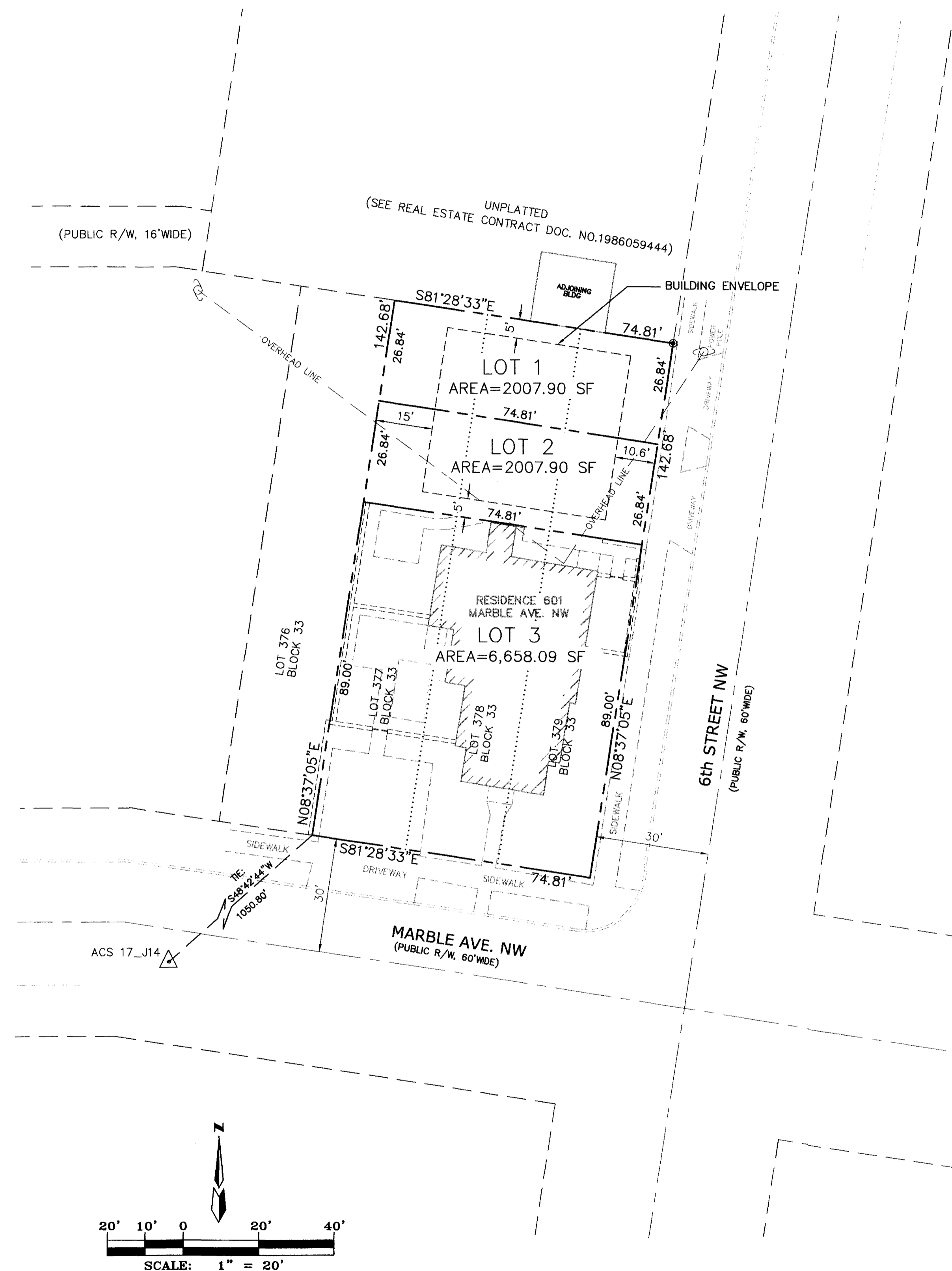
PIZZONIA FAMILY LIMITED PARTNERSHIP

SURVEYOR

ALDRICH LAND SURVEY  
 P.O. BOX 30701  
 ALBUQUERQUE, NEW MEXICO 87190  
 (505) 884-1990

ENGINEERS

D. MARK GOODWIN & ASSOCIATES, P.A.  
 CONSULTING ENGINEERS  
 P.O. BOX 90606  
 ALBUQUERQUE, NEW MEXICO 87199  
 (505) 828-2200



PROJECT: 1003210  
 DATE: 10-21-15  
 APP: 15-70377  
 REQUEST: SKETCH P.

		MARK GOODWIN & ASSOCIATES, P.A. CONSULTING ENGINEERS	
P.O. BOX 90606 ALBUQUERQUE, NEW MEXICO 87199 (505)828-2200, FAX (505)797-9539			
Designed: kmk	Drawn: kmk	Checked: DMG	Sheet 1 of 1
Scale: 1" = 200'	Date: 10/8/2015	Job: A15047	