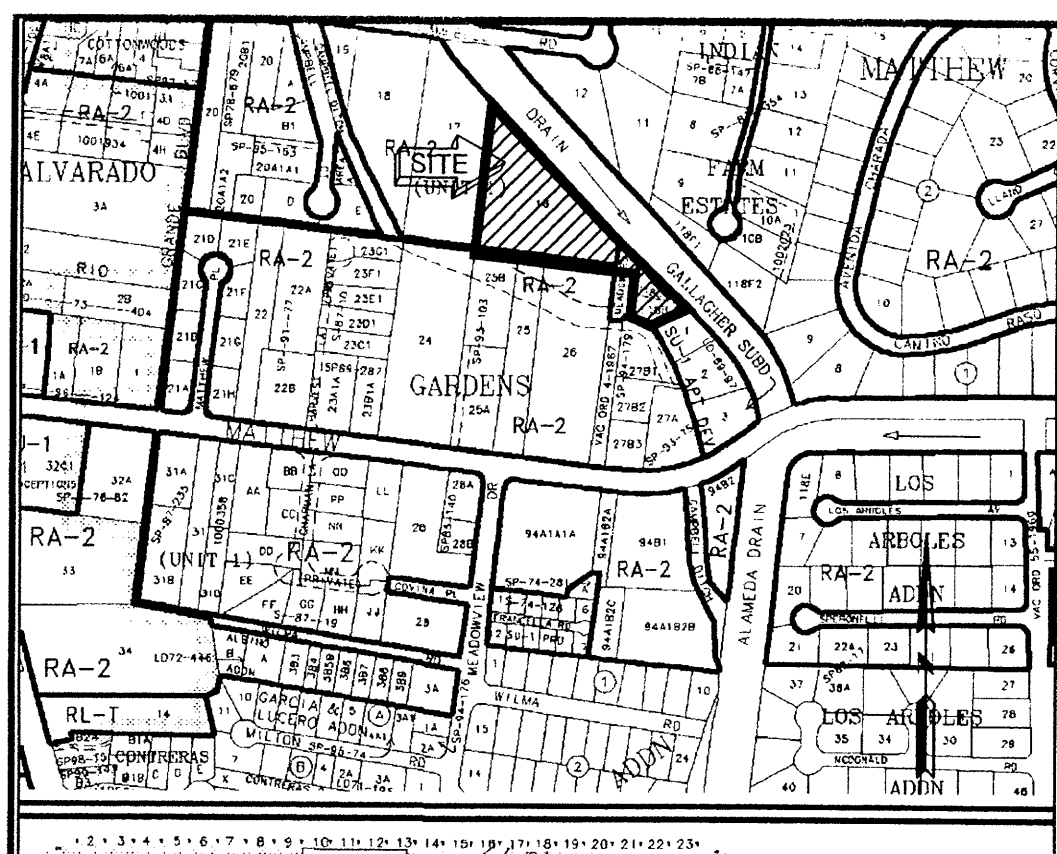


COMMUNITY SCIENCES CORPORATION - CORRALES, NEW MEXICO - (505) 897-0000



G-13-Z VICINITY MAP NOT TO SCALE

**DISCLOSURE STATEMENT**

THE PURPOSE OF THIS PLAT IS TO ADJUST THE LOT LINE BETWEEN 2 LOTS, TO VACATE EXISTING RIGHTS-OF-WAY AND TO GRANT EASEMENTS AS SHOWN HEREON.

**LEGAL DESCRIPTION**

LOT 8-P2 OF THE PLAT OF CAMPBELL FARM SUBDIVISION AS THE SAME IS SHOWN AND DESIGNATED ON THE PLAT THEREOF RECORDED IN THE OFFICE OF THE COUNTY CLERK, BERNALILLO COUNTY, NEW MEXICO ON NOVEMBER 5, 2003 IN BOOK 2003C, PAGE 329

AND

TRACT A, LANDS OF ANDREWS, AS THE SAME IS SHOWN AND DESIGNATED ON THE PLAT THEREOF RECORDED IN THE OFFICE OF THE COUNTY CLERK, BERNALILLO COUNTY, NEW MEXICO ON MAY 12, 1998 IN VOL.99C, FOL.330.

**SKETCH PLAT OF  
LOT 8-A, CAMPBELL FARM SUBDIVISION  
AND  
TRACT A-1, LANDS OF ANDREWS**

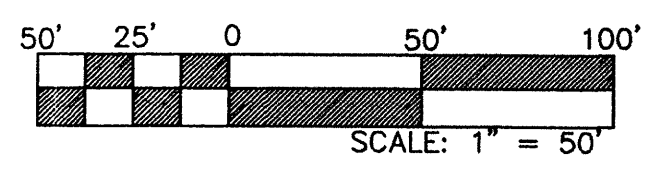
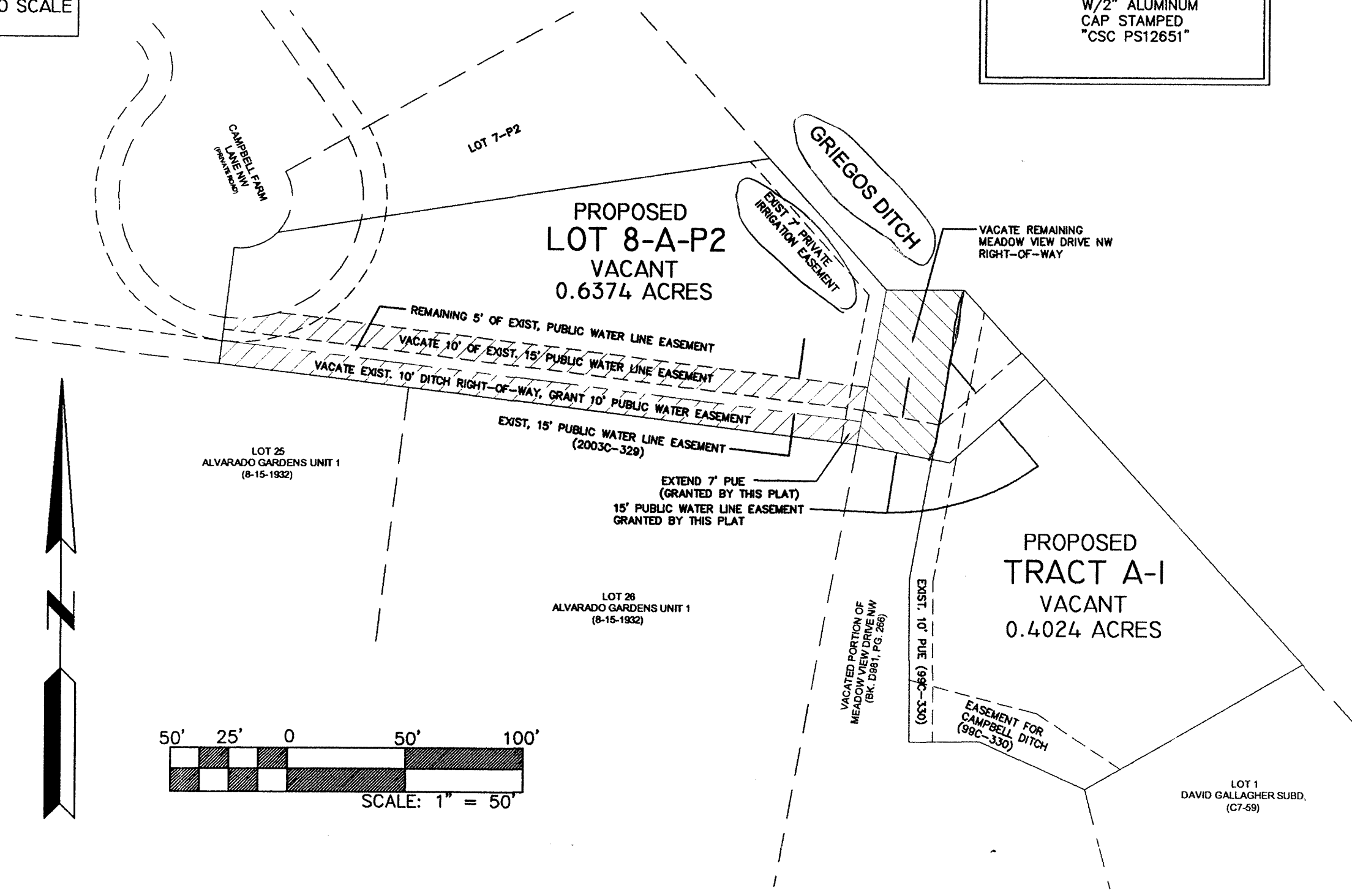
BEING A LOT LINE ADJUSTMENT PLAT OF  
LOT 8, CAMPBELL FARM SUBDIVISION  
AND TRACT A, LANDS OF ANDREWS  
WITH A VACATION OF A PORTION OF MEADOW ROAD NW  
AND AN ACEQUIA RIGHT-OF-WAY/ EASEMENT  
SITUATE WITHIN  
PROJECTED SEC. 6, T.10 N., R.3 E., N.M.P.M.,  
CITY OF ALBUQUERQUE  
BERNALILLO COUNTY, NEW MEXICO  
FEBRUARY, 2004

**LOT DATA:**

CASE NO.	
GROSS LOT ACREAGE	1.0398 ACRE
ZONE ATLAS INDEX NO.	G-13-Z
NO. OF EXISTING TRACTS	1
NO. OF EXISTING LOTS	1
NO. OF LOTS CREATED	0
NO. OF TRACTS CREATED	0
MILES OF FULL WIDTH STREETS CREATED	0
S.P. TALOS LOG	2001422067

**MONUMENT LEGEND**

- FOUND MONUMENT AS NOTED
- SET #5 REBAR W/2" ALUMINUM CAP STAMPED "CSC PS12651"



**PROJECT NUMBER:** \_\_\_\_\_

**Application Number:** \_\_\_\_\_

**PLAT APPROVAL:**

**Utility Approvals:**

PNM GAS SERVICES	DATE
PNM ELECTRIC SERVICES	DATE
QWEST COMMUNICATIONS, INC.	DATE
COMCAST CABLE	DATE
NEW MEXICO UTILITIES, INC.	DATE

**City Approvals:**

CITY SURVEYOR	DATE
REAL PROPERTY DIVISION	DATE
TRAFFIC ENGINEERING, TRANSPORTATION DIVISION	DATE
UTILITIES DEVELOPMENT	DATE
PARKS AND RECREATION DEPARTMENT	DATE
AMAFCA	DATE
CITY ENGINEER	DATE
DRB CHAIRPERSON, PLANNING DEPARTMENT	DATE

**TREASURERS CERTIFICATION:**

THIS IS TO CERTIFY THAT TAXES ARE CURRENT AND PAID ON UPC #s:  
 LOT X, BLOCK X, SUBDIVISION, UNIT X, UPC#  
 LOT X, BLOCK X, SUBDIVISION, UNIT X, UPC#  
 PROPERTY OWNER OF RECORD: CLIENT NAME

BERNALILLO COUNTY TREASURER'S OFFICE:  
 BY: \_\_\_\_\_ DATE: \_\_\_\_\_

**SURVEYORS CERTIFICATION**

I, THOMAS W. PATRICK, HEREBY AFFIRM THAT I AM A DULY QUALIFIED REGISTERED PROFESSIONAL SURVEYOR UNDER THE LAWS OF THE STATE OF NEW MEXICO AND DO CERTIFY THAT THIS PLAT WAS PREPARED BY ME OR UNDER MY DIRECT SUPERVISION; SHOWS ACCURATE DIMENSIONS AND LAND AREAS; SHOWS ALL EASEMENTS AND RESTRICTIONS AS SHOWN ON THE PLAT OF RECORD OR MADE KNOWN TO ME BY THE OWNERS AND/OR PROPRIETORS OF THE SUBDIVISION SHOWN HEREON, TITLE COMPANIES, UTILITY COMPANIES OR OTHER PARTIES EXPRESSING AN INTEREST. I FURTHER CERTIFY THAT THIS PLAT MEETS THE MINIMUM REQUIREMENTS FOR MONUMENTATION AND SURVEYS OF THE ALBUQUERQUE SUBDIVISION ORDINANCE AND MEETS THE "MINIMUM STANDARDS FOR SURVEYING IN NEW MEXICO" AND IS TRUE AND CORRECT TO THE BEST OF MY KNOWLEDGE AND BELIEF.

THOMAS W. PATRICK  
 NEW MEXICO PROFESSIONAL SURVEYOR NO. 12651. \_\_\_\_\_ DATE

**FREE CONSENT AND DEDICATION**

THE SUBDIVISION SHOWN HEREON IS WITH THE FREE CONSENT AND IN ACCORDANCE WITH THE DESIRES OF THE UNDERSIGNED OWNER(S) AND/OR PROPRIETOR(S) THEREOF. SAID OWNER(S) AND/OR PROPRIETOR(S) DO HEREBY CONSENT TO ALL OF THE FOREGOING AND DO HEREBY CERTIFY THAT THIS SUBDIVISION IS OF THEIR FREE ACT AND DEED.

CLIENT NAME \_\_\_\_\_ DATE \_\_\_\_\_

CLIENT NAME \_\_\_\_\_ DATE \_\_\_\_\_

STATE OF NEW MEXICO ) COUNTY OF BERNALILLO )	SS	STATE OF NEW MEXICO ) COUNTY OF BERNALILLO )	SS
ACKNOWLEDGED BEFORE ME THIS _____ DAY OF _____, 2000, BY CLIENT NAME		ACKNOWLEDGED BEFORE ME THIS _____ DAY OF _____, 2000, BY CLIENT NAME	
BY: _____ NOTARY PUBLIC		BY: _____	
MY COMMISSION EXPIRES: _____		MY COMMISSION EXPIRES: _____	

**SURVEY NOTES:**

- BEARINGS ARE GRID (NMSPC CENTRAL ZONE, NAD1927) AND ARE BASED ON CITY OF ALBUQUERQUE CONTROL STATIONS "3-B12" AND "BLACK AZIMUTH No. 2". ALL DISTANCES ARE GROUND DISTANCES. AVERAGE GROUND-TO-GRID FACTOR IS 0.9998679.
- BEARINGS AND DISTANCES IN PARENTHESES ( ) PER RECORD DATA FROM THE PLAT OF UNIT 1 OF THE KNOLLS OF PARADISE HILLS (5/22/1962; VOL. D3, FOLIO 31).

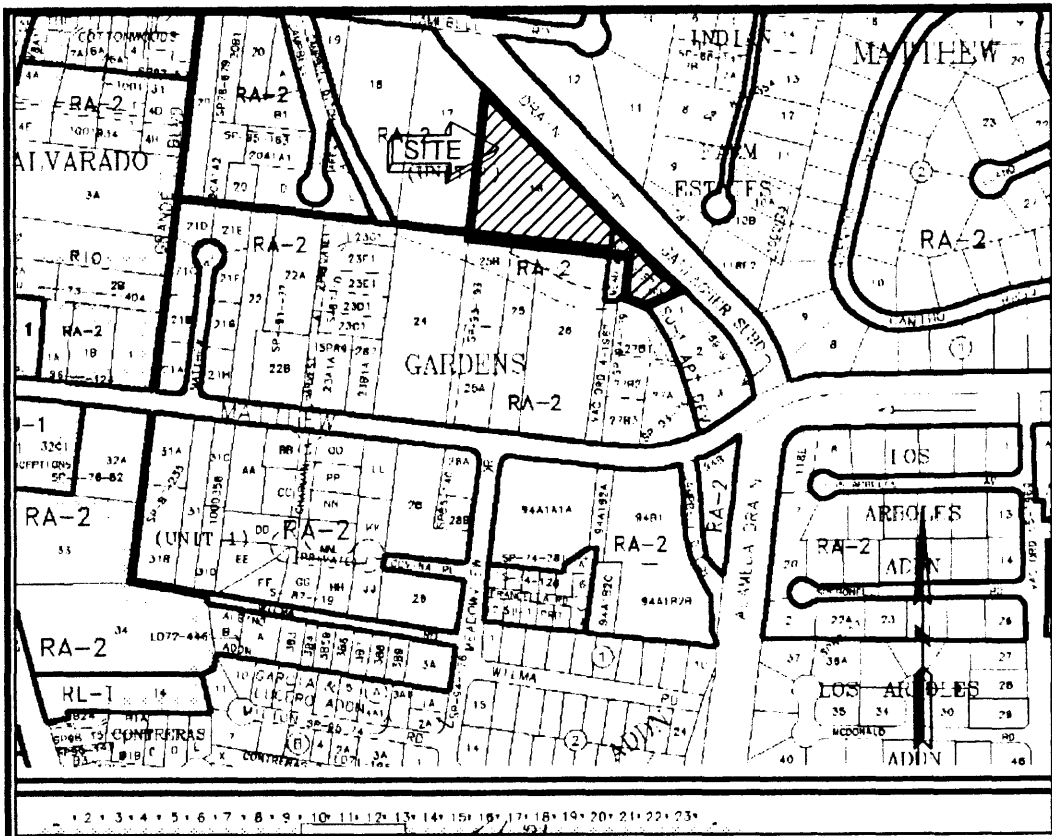
DWG PATH: XXX

CRS: XXX  
 DATE: XXX  
 SCALE: 1" = 50'  
 CREW: XXX  
 DRAWN: XXX  
 JOB NO.: XXX

**community sciences corporation**

LAND PLANNING ENGINEERING SURVEYING  
 P.O. Box 1328 Corrales, N.M. 87048 (505)897-0000

AGIS



G-13-Z VICINITY MAP NOT TO SCALE

PUBLIC UTILITY EASEMENTS

PUBLIC UTILITY EASEMENTS (P.U.E.) SHOWN ON THIS PLAT ARE GRANTED FOR THE COMMON AND JOINT USE OF: A. PNM ELECTRIC SERVICES... B. PNM GAS SERVICES... C. QWEST FOR THE INSTALLATION, MAINTENANCE AND SERVICE OF UNDERGROUND WATER AND SEWER LINES... D. COMCAST CABLE... E. CITY OF ALBUQUERQUE... F. MIDDLE RIO GRANDE CONSERVANCY DISTRICT... G. CITY OF ALBUQUERQUE... H. CITY OF ALBUQUERQUE... I. CITY OF ALBUQUERQUE... J. CITY OF ALBUQUERQUE... K. CITY OF ALBUQUERQUE... L. CITY OF ALBUQUERQUE... M. CITY OF ALBUQUERQUE... N. CITY OF ALBUQUERQUE... O. CITY OF ALBUQUERQUE... P. CITY OF ALBUQUERQUE... Q. CITY OF ALBUQUERQUE... R. CITY OF ALBUQUERQUE... S. CITY OF ALBUQUERQUE... T. CITY OF ALBUQUERQUE... U. CITY OF ALBUQUERQUE... V. CITY OF ALBUQUERQUE... W. CITY OF ALBUQUERQUE... X. CITY OF ALBUQUERQUE... Y. CITY OF ALBUQUERQUE... Z. CITY OF ALBUQUERQUE... AA. CITY OF ALBUQUERQUE... AB. CITY OF ALBUQUERQUE... AC. CITY OF ALBUQUERQUE... AD. CITY OF ALBUQUERQUE... AE. CITY OF ALBUQUERQUE... AF. CITY OF ALBUQUERQUE... AG. CITY OF ALBUQUERQUE... AH. CITY OF ALBUQUERQUE... AI. CITY OF ALBUQUERQUE... AJ. CITY OF ALBUQUERQUE... AK. CITY OF ALBUQUERQUE... AL. CITY OF ALBUQUERQUE... AM. CITY OF ALBUQUERQUE... AN. CITY OF ALBUQUERQUE... AO. CITY OF ALBUQUERQUE... AP. CITY OF ALBUQUERQUE... AQ. CITY OF ALBUQUERQUE... AR. CITY OF ALBUQUERQUE... AS. CITY OF ALBUQUERQUE... AT. CITY OF ALBUQUERQUE... AU. CITY OF ALBUQUERQUE... AV. CITY OF ALBUQUERQUE... AW. CITY OF ALBUQUERQUE... AX. CITY OF ALBUQUERQUE... AY. CITY OF ALBUQUERQUE... AZ. CITY OF ALBUQUERQUE... BA. CITY OF ALBUQUERQUE... BB. CITY OF ALBUQUERQUE... BC. CITY OF ALBUQUERQUE... BD. CITY OF ALBUQUERQUE... BE. CITY OF ALBUQUERQUE... BF. CITY OF ALBUQUERQUE... BG. CITY OF ALBUQUERQUE... BH. CITY OF ALBUQUERQUE... BI. CITY OF ALBUQUERQUE... BJ. CITY OF ALBUQUERQUE... BK. CITY OF ALBUQUERQUE... BL. CITY OF ALBUQUERQUE... BM. CITY OF ALBUQUERQUE... BN. CITY OF ALBUQUERQUE... BO. CITY OF ALBUQUERQUE... BP. CITY OF ALBUQUERQUE... BQ. CITY OF ALBUQUERQUE... BR. CITY OF ALBUQUERQUE... BS. CITY OF ALBUQUERQUE... BT. CITY OF ALBUQUERQUE... BU. CITY OF ALBUQUERQUE... BV. CITY OF ALBUQUERQUE... BV. CITY OF ALBUQUERQUE... BW. CITY OF ALBUQUERQUE... BX. CITY OF ALBUQUERQUE... BY. CITY OF ALBUQUERQUE... BZ. CITY OF ALBUQUERQUE... CA. CITY OF ALBUQUERQUE... CB. CITY OF ALBUQUERQUE... CC. CITY OF ALBUQUERQUE... CD. CITY OF ALBUQUERQUE... CE. CITY OF ALBUQUERQUE... CF. CITY OF ALBUQUERQUE... CG. CITY OF ALBUQUERQUE... CH. CITY OF ALBUQUERQUE... CI. CITY OF ALBUQUERQUE... CJ. CITY OF ALBUQUERQUE... CK. CITY OF ALBUQUERQUE... CL. CITY OF ALBUQUERQUE... CM. CITY OF ALBUQUERQUE... CN. CITY OF ALBUQUERQUE... CO. CITY OF ALBUQUERQUE... CP. CITY OF ALBUQUERQUE... CQ. CITY OF ALBUQUERQUE... CR. CITY OF ALBUQUERQUE... CS. CITY OF ALBUQUERQUE... CT. CITY OF ALBUQUERQUE... CU. CITY OF ALBUQUERQUE... CV. CITY OF ALBUQUERQUE... CW. CITY OF ALBUQUERQUE... CX. CITY OF ALBUQUERQUE... CY. CITY OF ALBUQUERQUE... CZ. CITY OF ALBUQUERQUE... DA. CITY OF ALBUQUERQUE... DB. CITY OF ALBUQUERQUE... DC. CITY OF ALBUQUERQUE... DD. CITY OF ALBUQUERQUE... DE. CITY OF ALBUQUERQUE... DF. CITY OF ALBUQUERQUE... DG. CITY OF ALBUQUERQUE... DH. CITY OF ALBUQUERQUE... DI. CITY OF ALBUQUERQUE... DJ. CITY OF ALBUQUERQUE... DK. CITY OF ALBUQUERQUE... DL. CITY OF ALBUQUERQUE... DM. CITY OF ALBUQUERQUE... DN. CITY OF ALBUQUERQUE... DO. CITY OF ALBUQUERQUE... DP. CITY OF ALBUQUERQUE... DQ. CITY OF ALBUQUERQUE... DR. CITY OF ALBUQUERQUE... DS. CITY OF ALBUQUERQUE... DT. CITY OF ALBUQUERQUE... DU. CITY OF ALBUQUERQUE... DV. CITY OF ALBUQUERQUE... DW. CITY OF ALBUQUERQUE... DX. CITY OF ALBUQUERQUE... DY. CITY OF ALBUQUERQUE... DZ. CITY OF ALBUQUERQUE... EA. CITY OF ALBUQUERQUE... EB. CITY OF ALBUQUERQUE... EC. CITY OF ALBUQUERQUE... ED. CITY OF ALBUQUERQUE... EE. CITY OF ALBUQUERQUE... EF. CITY OF ALBUQUERQUE... EG. CITY OF ALBUQUERQUE... EH. CITY OF ALBUQUERQUE... EI. CITY OF ALBUQUERQUE... EJ. CITY OF ALBUQUERQUE... EK. CITY OF ALBUQUERQUE... EL. CITY OF ALBUQUERQUE... EM. CITY OF ALBUQUERQUE... EN. CITY OF ALBUQUERQUE... EO. CITY OF ALBUQUERQUE... EP. CITY OF ALBUQUERQUE... EQ. CITY OF ALBUQUERQUE... ER. CITY OF ALBUQUERQUE... ES. CITY OF ALBUQUERQUE... ET. CITY OF ALBUQUERQUE... EU. CITY OF ALBUQUERQUE... EV. CITY OF ALBUQUERQUE... EW. CITY OF ALBUQUERQUE... EX. CITY OF ALBUQUERQUE... EY. CITY OF ALBUQUERQUE... EZ. CITY OF ALBUQUERQUE... FA. CITY OF ALBUQUERQUE... FB. CITY OF ALBUQUERQUE... FC. CITY OF ALBUQUERQUE... FD. CITY OF ALBUQUERQUE... FE. CITY OF ALBUQUERQUE... FF. CITY OF ALBUQUERQUE... FG. CITY OF ALBUQUERQUE... FH. CITY OF ALBUQUERQUE... FI. CITY OF ALBUQUERQUE... FJ. CITY OF ALBUQUERQUE... FK. CITY OF ALBUQUERQUE... FL. CITY OF ALBUQUERQUE... FM. CITY OF ALBUQUERQUE... FN. CITY OF ALBUQUERQUE... FO. CITY OF ALBUQUERQUE... FP. CITY OF ALBUQUERQUE... FQ. CITY OF ALBUQUERQUE... FR. CITY OF ALBUQUERQUE... FS. CITY OF ALBUQUERQUE... FT. CITY OF ALBUQUERQUE... FU. CITY OF ALBUQUERQUE... FV. CITY OF ALBUQUERQUE... FW. CITY OF ALBUQUERQUE... FX. CITY OF ALBUQUERQUE... FY. CITY OF ALBUQUERQUE... FZ. CITY OF ALBUQUERQUE... GA. CITY OF ALBUQUERQUE... GB. CITY OF ALBUQUERQUE... GC. CITY OF ALBUQUERQUE... GD. CITY OF ALBUQUERQUE... GE. CITY OF ALBUQUERQUE... GF. CITY OF ALBUQUERQUE... GG. CITY OF ALBUQUERQUE... GH. CITY OF ALBUQUERQUE... GI. CITY OF ALBUQUERQUE... GJ. CITY OF ALBUQUERQUE... GK. CITY OF ALBUQUERQUE... GL. CITY OF ALBUQUERQUE... GM. CITY OF ALBUQUERQUE... GN. CITY OF ALBUQUERQUE... GO. CITY OF ALBUQUERQUE... GP. CITY OF ALBUQUERQUE... GQ. CITY OF ALBUQUERQUE... GR. CITY OF ALBUQUERQUE... GS. CITY OF ALBUQUERQUE... GT. CITY OF ALBUQUERQUE... GU. CITY OF ALBUQUERQUE... GV. CITY OF ALBUQUERQUE... GW. CITY OF ALBUQUERQUE... GX. CITY OF ALBUQUERQUE... GY. CITY OF ALBUQUERQUE... GZ. CITY OF ALBUQUERQUE... HA. CITY OF ALBUQUERQUE... HB. CITY OF ALBUQUERQUE... HC. CITY OF ALBUQUERQUE... HD. CITY OF ALBUQUERQUE... HE. CITY OF ALBUQUERQUE... HF. CITY OF ALBUQUERQUE... HG. CITY OF ALBUQUERQUE... HH. CITY OF ALBUQUERQUE... HI. CITY OF ALBUQUERQUE... HJ. CITY OF ALBUQUERQUE... HK. CITY OF ALBUQUERQUE... HL. CITY OF ALBUQUERQUE... HM. CITY OF ALBUQUERQUE... HN. CITY OF ALBUQUERQUE... HO. CITY OF ALBUQUERQUE... HP. CITY OF ALBUQUERQUE... HQ. CITY OF ALBUQUERQUE... HR. CITY OF ALBUQUERQUE... HS. CITY OF ALBUQUERQUE... HT. CITY OF ALBUQUERQUE... HU. CITY OF ALBUQUERQUE... HV. CITY OF ALBUQUERQUE... HW. CITY OF ALBUQUERQUE... HX. CITY OF ALBUQUERQUE... HY. CITY OF ALBUQUERQUE... HZ. CITY OF ALBUQUERQUE... IA. CITY OF ALBUQUERQUE... IB. CITY OF ALBUQUERQUE... IC. CITY OF ALBUQUERQUE... ID. CITY OF ALBUQUERQUE... IE. CITY OF ALBUQUERQUE... IF. CITY OF ALBUQUERQUE... IG. CITY OF ALBUQUERQUE... IH. CITY OF ALBUQUERQUE... II. CITY OF ALBUQUERQUE... IJ. CITY OF ALBUQUERQUE... IK. CITY OF ALBUQUERQUE... IL. CITY OF ALBUQUERQUE... IM. CITY OF ALBUQUERQUE... IN. CITY OF ALBUQUERQUE... IO. CITY OF ALBUQUERQUE... IP. CITY OF ALBUQUERQUE... IQ. CITY OF ALBUQUERQUE... IR. CITY OF ALBUQUERQUE... IS. CITY OF ALBUQUERQUE... IT. CITY OF ALBUQUERQUE... IU. CITY OF ALBUQUERQUE... IV. CITY OF ALBUQUERQUE... IW. CITY OF ALBUQUERQUE... IX. CITY OF ALBUQUERQUE... IY. CITY OF ALBUQUERQUE... IZ. CITY OF ALBUQUERQUE... JA. CITY OF ALBUQUERQUE... JB. CITY OF ALBUQUERQUE... JC. CITY OF ALBUQUERQUE... JD. CITY OF ALBUQUERQUE... JE. CITY OF ALBUQUERQUE... JF. CITY OF ALBUQUERQUE... JG. CITY OF ALBUQUERQUE... JH. CITY OF ALBUQUERQUE... JI. CITY OF ALBUQUERQUE... JJ. CITY OF ALBUQUERQUE... JK. CITY OF ALBUQUERQUE... JL. CITY OF ALBUQUERQUE... JM. CITY OF ALBUQUERQUE... JN. CITY OF ALBUQUERQUE... JO. CITY OF ALBUQUERQUE... JP. CITY OF ALBUQUERQUE... JQ. CITY OF ALBUQUERQUE... JR. CITY OF ALBUQUERQUE... JS. CITY OF ALBUQUERQUE... JT. CITY OF ALBUQUERQUE... JU. CITY OF ALBUQUERQUE... JV. CITY OF ALBUQUERQUE... JW. CITY OF ALBUQUERQUE... JX. CITY OF ALBUQUERQUE... JY. CITY OF ALBUQUERQUE... JZ. CITY OF ALBUQUERQUE... KA. CITY OF ALBUQUERQUE... KB. CITY OF ALBUQUERQUE... KC. CITY OF ALBUQUERQUE... KD. CITY OF ALBUQUERQUE... KE. CITY OF ALBUQUERQUE... KF. CITY OF ALBUQUERQUE... KG. CITY OF ALBUQUERQUE... KH. CITY OF ALBUQUERQUE... KI. CITY OF ALBUQUERQUE... KL. CITY OF ALBUQUERQUE... KM. CITY OF ALBUQUERQUE... KN. CITY OF ALBUQUERQUE... KO. CITY OF ALBUQUERQUE... KP. CITY OF ALBUQUERQUE... KQ. CITY OF ALBUQUERQUE... KR. CITY OF ALBUQUERQUE... KS. CITY OF ALBUQUERQUE... KT. CITY OF ALBUQUERQUE... KU. CITY OF ALBUQUERQUE... KV. CITY OF ALBUQUERQUE... KW. CITY OF ALBUQUERQUE... KX. CITY OF ALBUQUERQUE... KY. CITY OF ALBUQUERQUE... KZ. CITY OF ALBUQUERQUE... LA. CITY OF ALBUQUERQUE... LB. CITY OF ALBUQUERQUE... LC. CITY OF ALBUQUERQUE... LD. CITY OF ALBUQUERQUE... LE. CITY OF ALBUQUERQUE... LF. CITY OF ALBUQUERQUE... LG. CITY OF ALBUQUERQUE... LH. CITY OF ALBUQUERQUE... LI. CITY OF ALBUQUERQUE... LJ. CITY OF ALBUQUERQUE... LK. CITY OF ALBUQUERQUE... LL. CITY OF ALBUQUERQUE... LM. CITY OF ALBUQUERQUE... LN. CITY OF ALBUQUERQUE... LO. CITY OF ALBUQUERQUE... LP. CITY OF ALBUQUERQUE... LQ. CITY OF ALBUQUERQUE... LR. CITY OF ALBUQUERQUE... LS. CITY OF ALBUQUERQUE... LT. CITY OF ALBUQUERQUE... LU. CITY OF ALBUQUERQUE... LV. CITY OF ALBUQUERQUE... LW. CITY OF ALBUQUERQUE... LX. CITY OF ALBUQUERQUE... LY. CITY OF ALBUQUERQUE... LZ. CITY OF ALBUQUERQUE... MA. CITY OF ALBUQUERQUE... MB. CITY OF ALBUQUERQUE... MC. CITY OF ALBUQUERQUE... MD. CITY OF ALBUQUERQUE... ME. CITY OF ALBUQUERQUE... MF. CITY OF ALBUQUERQUE... MG. CITY OF ALBUQUERQUE... MH. CITY OF ALBUQUERQUE... MI. CITY OF ALBUQUERQUE... MJ. CITY OF ALBUQUERQUE... MK. CITY OF ALBUQUERQUE... ML. CITY OF ALBUQUERQUE... MM. CITY OF ALBUQUERQUE... MN. CITY OF ALBUQUERQUE... MO. CITY OF ALBUQUERQUE... MP. CITY OF ALBUQUERQUE... MQ. CITY OF ALBUQUERQUE... MR. CITY OF ALBUQUERQUE... MS. CITY OF ALBUQUERQUE... MT. CITY OF ALBUQUERQUE... MU. CITY OF ALBUQUERQUE... MV. CITY OF ALBUQUERQUE... MW. CITY OF ALBUQUERQUE... MX. CITY OF ALBUQUERQUE... MY. CITY OF ALBUQUERQUE... MZ. CITY OF ALBUQUERQUE... NA. CITY OF ALBUQUERQUE... NB. CITY OF ALBUQUERQUE... NC. CITY OF ALBUQUERQUE... ND. CITY OF ALBUQUERQUE... NE. CITY OF ALBUQUERQUE... NF. CITY OF ALBUQUERQUE... NG. CITY OF ALBUQUERQUE... NH. CITY OF ALBUQUERQUE... NI. CITY OF ALBUQUERQUE... NJ. CITY OF ALBUQUERQUE... NK. CITY OF ALBUQUERQUE... NL. CITY OF ALBUQUERQUE... NM. CITY OF ALBUQUERQUE... NN. CITY OF ALBUQUERQUE... NO. CITY OF ALBUQUERQUE... NP. CITY OF ALBUQUERQUE... NQ. CITY OF ALBUQUERQUE... NR. CITY OF ALBUQUERQUE... NS. CITY OF ALBUQUERQUE... NT. CITY OF ALBUQUERQUE... NU. CITY OF ALBUQUERQUE... NV. CITY OF ALBUQUERQUE... NW. CITY OF ALBUQUERQUE... NX. CITY OF ALBUQUERQUE... NY. CITY OF ALBUQUERQUE... NZ. CITY OF ALBUQUERQUE... OA. CITY OF ALBUQUERQUE... OB. CITY OF ALBUQUERQUE... OC. CITY OF ALBUQUERQUE... OD. CITY OF ALBUQUERQUE... OE. CITY OF ALBUQUERQUE... OF. CITY OF ALBUQUERQUE... OG. CITY OF ALBUQUERQUE... OH. CITY OF ALBUQUERQUE... OI. CITY OF ALBUQUERQUE... OJ. CITY OF ALBUQUERQUE... OK. CITY OF ALBUQUERQUE... OL. CITY OF ALBUQUERQUE... OM. CITY OF ALBUQUERQUE... ON. CITY OF ALBUQUERQUE... OO. CITY OF ALBUQUERQUE... OP. CITY OF ALBUQUERQUE... OQ. CITY OF ALBUQUERQUE... OR. CITY OF ALBUQUERQUE... OS. CITY OF ALBUQUERQUE... OT. CITY OF ALBUQUERQUE... OU. CITY OF ALBUQUERQUE... OV. CITY OF ALBUQUERQUE... OW. CITY OF ALBUQUERQUE... OX. CITY OF ALBUQUERQUE... OY. CITY OF ALBUQUERQUE... OZ. CITY OF ALBUQUERQUE... PA. CITY OF ALBUQUERQUE... PB. CITY OF ALBUQUERQUE... PC. CITY OF ALBUQUERQUE... PD. CITY OF ALBUQUERQUE... PE. CITY OF ALBUQUERQUE... PF. CITY OF ALBUQUERQUE... PG. CITY OF ALBUQUERQUE... PH. CITY OF ALBUQUERQUE... PI. CITY OF ALBUQUERQUE... PJ. CITY OF ALBUQUERQUE... PK. CITY OF ALBUQUERQUE... PL. CITY OF ALBUQUERQUE... PM. CITY OF ALBUQUERQUE... PN. CITY OF ALBUQUERQUE... PO. CITY OF ALBUQUERQUE... PP. CITY OF ALBUQUERQUE... PQ. CITY OF ALBUQUERQUE... PR. CITY OF ALBUQUERQUE... PS. CITY OF ALBUQUERQUE... PT. CITY OF ALBUQUERQUE... PU. CITY OF ALBUQUERQUE... PV. CITY OF ALBUQUERQUE... PW. CITY OF ALBUQUERQUE... PX. CITY OF ALBUQUERQUE... PY. CITY OF ALBUQUERQUE... PZ. CITY OF ALBUQUERQUE... QA. CITY OF ALBUQUERQUE... QB. CITY OF ALBUQUERQUE... QC. CITY OF ALBUQUERQUE... QD. CITY OF ALBUQUERQUE... QE. CITY OF ALBUQUERQUE... QF. CITY OF ALBUQUERQUE... QG. CITY OF ALBUQUERQUE... QH. CITY OF ALBUQUERQUE... QI. CITY OF ALBUQUERQUE... QJ. CITY OF ALBUQUERQUE... QK. CITY OF ALBUQUERQUE... QL. CITY OF ALBUQUERQUE... QM. CITY OF ALBUQUERQUE... QN. CITY OF ALBUQUERQUE... QO. CITY OF ALBUQUERQUE... QP. CITY OF ALBUQUERQUE... QQ. CITY OF ALBUQUERQUE... QR. CITY OF ALBUQUERQUE... QS. CITY OF ALBUQUERQUE... QT. CITY OF ALBUQUERQUE... QU. CITY OF ALBUQUERQUE... QV. CITY OF ALBUQUERQUE... QW. CITY OF ALBUQUERQUE... QX. CITY OF ALBUQUERQUE... QY. CITY OF ALBUQUERQUE... QZ. CITY OF ALBUQUERQUE... RA. CITY OF ALBUQUERQUE... RB. CITY OF ALBUQUERQUE... RC. CITY OF ALBUQUERQUE... RD. CITY OF ALBUQUERQUE... RE. CITY OF ALBUQUERQUE... RF. CITY OF ALBUQUERQUE... RG. CITY OF ALBUQUERQUE... RH. CITY OF ALBUQUERQUE... RI. CITY OF ALBUQUERQUE... RJ. CITY OF ALBUQUERQUE... RK. CITY OF ALBUQUERQUE... RL. CITY OF ALBUQUERQUE... RM. CITY OF ALBUQUERQUE... RN. CITY OF ALBUQUERQUE... RO. CITY OF ALBUQUERQUE... RP. CITY OF ALBUQUERQUE... RQ. CITY OF ALBUQUERQUE... RR. CITY OF ALBUQUERQUE... RS. CITY OF ALBUQUERQUE... RT. CITY OF ALBUQUERQUE... RU. CITY OF ALBUQUERQUE... RV. CITY OF ALBUQUERQUE... RW. CITY OF ALBUQUERQUE... RX. CITY OF ALBUQUERQUE... RY. CITY OF ALBUQUERQUE... RZ. CITY OF ALBUQUERQUE... SA. CITY OF ALBUQUERQUE... SB. CITY OF ALBUQUERQUE... SC. CITY OF ALBUQUERQUE... SD. CITY OF ALBUQUERQUE... SE. CITY OF ALBUQUERQUE... SF. CITY OF ALBUQUERQUE... SG. CITY OF ALBUQUERQUE... SH. CITY OF ALBUQUERQUE... SI. CITY OF ALBUQUERQUE... SJ. CITY OF ALBUQUERQUE... SK. CITY OF ALBUQUERQUE... SL. CITY OF ALBUQUERQUE... SM. CITY OF ALBUQUERQUE... SN. CITY OF ALBUQUERQUE... SO. CITY OF ALBUQUERQUE... SP. CITY OF ALBUQUERQUE... SQ. CITY OF ALBUQUERQUE... SR. CITY OF ALBUQUERQUE... SS. CITY OF ALBUQUERQUE... ST. CITY OF ALBUQUERQUE... SU. CITY OF ALBUQUERQUE... SV. CITY OF ALBUQUERQUE... SW. CITY OF ALBUQUERQUE... SX. CITY OF ALBUQUERQUE... SY. CITY OF ALBUQUERQUE... SZ. CITY OF ALBUQUERQUE... TA. CITY OF ALBUQUERQUE... TB. CITY OF ALBUQUERQUE... TC. CITY OF ALBUQUERQUE... TD. CITY OF ALBUQUERQUE... TE. CITY OF ALBUQUERQUE... TF. CITY OF ALBUQUERQUE... TG. CITY OF ALBUQUERQUE... TH. CITY OF ALBUQUERQUE... TI. CITY OF ALBUQUERQUE... TJ. CITY OF ALBUQUERQUE... TK. CITY OF ALBUQUERQUE... TL. CITY OF ALBUQUERQUE... TM. CITY OF ALBUQUERQUE... TN. CITY OF ALBUQUERQUE... TO. CITY OF ALBUQUERQUE... TP. CITY OF ALBUQUERQUE... TQ. CITY OF ALBUQUERQUE... TR. CITY OF ALBUQUERQUE... TS. CITY OF ALBUQUERQUE... TU. CITY OF ALBUQUERQUE... TV. CITY OF ALBUQUERQUE... TW. CITY OF ALBUQUERQUE... TX. CITY OF ALBUQUERQUE... TY. CITY OF ALBUQUERQUE... TZ. CITY OF ALBUQUERQUE... UA. CITY OF ALBUQUERQUE... UB. CITY OF ALBUQUERQUE... UC. CITY OF ALBUQUERQUE... UD. CITY OF ALBUQUERQUE... UE. CITY OF ALBUQUERQUE... UF. CITY OF ALBUQUERQUE... UG. CITY OF ALBUQUERQUE... UH. CITY OF ALBUQUERQUE... UI. CITY OF ALBUQUERQUE... UJ. CITY OF ALBUQUERQUE... UK. CITY OF ALBUQUERQUE... UL. CITY OF ALBUQUERQUE... UM. CITY OF ALBUQUERQUE... UN. CITY OF ALBUQUERQUE... UO. CITY OF ALBUQUERQUE... UP. CITY OF ALBUQUERQUE... UQ. CITY OF ALBUQUERQUE... UR. CITY OF ALBUQUERQUE... US. CITY OF ALBUQUERQUE... UT. CITY OF ALBUQUERQUE... UY. CITY OF ALBUQUERQUE... UZ. CITY OF ALBUQUERQUE... VA. CITY OF ALBUQUERQUE... VB. CITY OF ALBUQUERQUE... VC. CITY OF ALBUQUERQUE... VD. CITY OF ALBUQUERQUE... VE. CITY OF ALBUQUERQUE... VF. CITY OF ALBUQUERQUE... VG. CITY OF ALBUQUERQUE... VH. CITY OF ALBUQUERQUE... VI. CITY OF ALBUQUERQUE... VJ. CITY OF ALBUQUERQUE... VK. CITY OF ALBUQUERQUE... VL. CITY OF ALBUQUERQUE... VM. CITY OF ALBUQUERQUE... VN. CITY OF ALBUQUERQUE... VO. CITY OF ALBUQUERQUE... VP. CITY OF ALBUQUERQUE... VQ. CITY OF ALBUQUERQUE... VR. CITY OF ALBUQUERQUE... VS. CITY OF ALBUQUERQUE... VT. CITY OF ALBUQUERQUE... VU. CITY OF ALBUQUERQUE... VV. CITY OF ALBUQUERQUE... VW. CITY OF ALBUQUERQUE... VX. CITY OF ALBUQUERQUE... VY. CITY OF ALBUQUERQUE... VZ. CITY OF ALBUQUERQUE... WA. CITY OF ALBUQUERQUE... WB. CITY OF ALBUQUERQUE... WC. CITY OF ALBUQUERQUE... WD. CITY OF ALBUQUERQUE... WE. CITY OF ALBUQUERQUE... WF. CITY OF ALBUQUERQUE... WG. CITY OF ALBUQUERQUE... WH. CITY OF ALBUQUERQUE... WI. CITY OF ALBUQUERQUE... WJ. CITY OF ALBUQUERQUE... WK. CITY OF ALBUQUERQUE... WL. CITY OF ALBUQUERQUE... WM. CITY OF ALBUQUERQUE... WN. CITY OF ALBUQUERQUE... WO. CITY OF ALBUQUERQUE... WP. CITY OF ALBUQUERQUE... WQ. CITY OF ALBUQUERQUE... WR. CITY OF ALBUQUERQUE... WS. CITY OF ALBUQUERQUE... WT. CITY OF ALBUQUERQUE... WY. CITY OF ALBUQUERQUE... WZ. CITY OF ALBUQUERQUE... XA. CITY OF ALBUQUERQUE... XB. CITY OF ALBUQUERQUE... XC. CITY OF ALBUQUERQUE... XD. CITY OF ALBUQUERQUE... XE. CITY OF ALBUQUERQUE... XF. CITY OF ALBUQUERQUE... XG. CITY OF ALBUQUERQUE... XH. CITY OF ALBUQUERQUE... XI. CITY OF ALBUQUERQUE... XJ. CITY OF ALBUQUERQUE... XK. CITY OF ALBUQUERQUE... XL. CITY OF ALBUQUERQUE... XM. CITY OF ALBUQUERQUE... XN. CITY OF ALBUQUERQUE... XO. CITY OF ALBUQUERQUE... XP. CITY OF ALBUQUERQUE... XQ. CITY OF ALBUQUERQUE... XR. CITY OF ALBUQUERQUE... XS. CITY OF ALBUQUERQUE... XT. CITY OF ALBUQUERQUE... XU. CITY OF ALBUQUERQUE... XV. CITY OF ALBUQUERQUE... XW. CITY OF ALBUQUERQUE... XX. CITY OF ALBUQUERQUE... XY. CITY OF ALBUQUERQUE... XZ. CITY OF ALBUQUERQUE... YA. CITY OF ALBUQUERQUE... YB. CITY OF ALBUQUERQUE... YC. CITY OF ALBUQUERQUE... YD. CITY OF ALBUQUERQUE... YE. CITY OF ALBUQUERQUE... YF. CITY OF ALBUQUERQUE... YG. CITY OF ALBUQUERQUE... YH. CITY OF ALBUQUERQUE... YI. CITY OF ALBUQUERQUE... YJ. CITY OF ALBUQUERQUE... YK. CITY OF ALBUQUERQUE... YL. CITY OF ALBUQUERQUE... YM. CITY OF ALBUQUERQUE... YN. CITY OF ALBUQUERQUE... YO. CITY OF ALBUQUERQUE... YP. CITY OF ALBUQUERQUE... YQ. CITY OF ALBUQUERQUE... YR. CITY OF ALBUQUERQUE... YS. CITY OF ALBUQUERQUE... YT. CITY OF ALBUQUERQUE... YU. CITY OF ALBUQUERQUE... YV. CITY OF ALBUQUERQUE... YW. CITY OF ALBUQUERQUE... YX. CITY OF ALBUQUERQUE... YY. CITY OF ALBUQUERQUE... YZ. CITY OF ALBUQUERQUE... ZA. CITY OF ALBUQUERQUE... ZB. CITY OF ALBUQUERQUE... ZC. CITY OF ALBUQUERQUE... ZD. CITY OF ALBUQUERQUE... ZE. CITY OF ALBUQUERQUE... ZF. CITY OF ALBUQUERQUE... ZG. CITY OF ALBUQUERQUE... ZH. CITY OF ALBUQUERQUE... ZI. CITY OF ALBUQUERQUE... ZJ. CITY OF ALBUQUERQUE... ZK. CITY OF ALBUQUERQUE... ZL. CITY OF ALBUQUERQUE... ZM. CITY OF ALBUQUERQUE... ZN. CITY OF ALBUQUERQUE... ZO. CITY OF ALBUQUERQUE... ZP. CITY OF ALBUQUERQUE... ZQ. CITY OF ALBUQUERQUE... ZR. CITY OF ALBUQUERQUE... ZS. CITY OF ALBUQUERQUE... ZT. CITY OF ALBUQUERQUE... ZU. CITY OF ALBUQUERQUE... ZV. CITY OF ALBUQUERQUE... ZW. CITY OF ALBUQUERQUE... ZX. CITY OF ALBUQUERQUE... ZY. CITY OF ALBUQUERQUE... ZZ. CITY OF ALBUQUERQUE...

LEGAL DESCRIPTION

LOT 8-P2 OF THE PLAT OF CAMPBELL FARM SUBDIVISION AS THE SAME IS SHOWN AND DESIGNATED ON THE PLAT THEREOF RECORDED IN THE OFFICE OF THE COUNTY CLERK, BERNALILLO COUNTY, NEW MEXICO ON NOVEMBER 5, 2003 IN BOOK 2003C, PAGE 329 AND TRACT A, LANDS OF ANDREWS, AS THE SAME IS SHOWN AND DESIGNATED ON THE PLAT THEREOF RECORDED IN THE OFFICE OF THE COUNTY CLERK, BERNALILLO COUNTY, NEW MEXICO ON MAY 12, 1998 IN VOL.99C, FOL.330. AND A PORTION OF MEADOW DRIVE NW VACATED BY VACATION ACTION #04-00254 AND THE NORTHERLY 5' OF THE 10' WIDE DITCH RIGHT-OF-WAY SHOWN ON THE PLAT OF ALVARADO GARDENS AS THE SAME IS SHOWN AND DESIGNATED ON THE PLAT THEREOF RECORDED IN THE OFFICE OF THE COUNTY CLERK, BERNALILLO COUNTY, NEW MEXICO ON AUGUST 15, 1932 AND VACATED BY VACATION ACTION #04-00255 ALL TOGETHER BEING MORE PARTICULARLY DESCRIBED BY METES AND BOUNDS AS FOLLOWS: BEGINNING AT THE SOUTHWESTERLY CORNER OF THE PROPERTY HEREIN DESCRIBED, SAID POINT BEING LOCATED ON THE SOUTHERLY LINE OF THE SAID 10' DITCH RIGHT-OF-WAY/EASEMENT AND FROM WHENCE ACS STATION "7-H13" BEARS S12°11'45"W, 3366.70 FEET; RUNNING THENCE N06°59'49"E, 50.00 FEET; THENCE 20.35 FEET ALONG THE ARC OF A 22.00 FOOT RADIUS CURVE TO THE LEFT (CENTRAL ANGLE=52°59'32"; CHORD BEARS N70°32'28"E, 19.63 FEET); THENCE N81°07'17"E, 211.37 FEET TO A POINT ON THE MRGCD GRIEGOS DRAIN SOUTHWESTERLY RIGHT-OF-WAY LINE; THENCE ALONG SAID RIGHT-OF-WAY LINE THE FOLLOWING TWO (2) COURSES: 1. S41°50'48"E, 74.74 FEET; 2. S42°38'56"E, 232.29 FEET; THENCE LEAVING SAID RIGHT-OF-WAY LINE S59°45'58"W, 83.15 FEET; THENCE N65°30'48"W, 49.34 FEET; THENCE S89°19'35"W, 29.95 FEET; THENCE N00°09'23"W, 69.10 FEET; THENCE N10°25'42"E, 58.17 FEET; THENCE N79°34'18"W, 32.54 FEET; THENCE N82°59'43"W, 273.57 FEET TO THE POINT OF BEGINNING. CONTAINS 0.8808 ACRES, MORE OR LESS

MONUMENT LEGEND

- FOUND MONUMENT AS NOTED
SET #5 REBAR W/2 ALUMINUM CAP STAMPED "CSC PS12651"

VACATION ACTIONS:

PORTION OF MEADOW DRIVE NW: VACATION ACTION #04-00254 DATE 5-12-2004
5' DITCH RIGHT-OF-WAY/EASEMENT: VACATION ACTION #04-00255 DATE 5-12-2004
PORTION OF EXISTING PUBLIC WATER LINE EASEMENT: VACATION ACTION #04-00254 DATE 5-12-2004

LOT DATA:

CASE NO. 1003232
GROSS LOT ACREAGE 0.8808 ACRE
ZONE ATLAS INDEX NO. G-13-Z
NO. OF EXISTING TRACTS 1
NO. OF EXISTING LOTS 1
NO. OF LOTS CREATED 1
NO. OF TRACTS CREATED 1
MILES OF FULL WIDTH STREETS CREATED 0
S.P. TALOS LOG 2001422067

PROJECT NUMBER: 1003232

Application Number: 4DRB-00253, -00254, -00255

PLAT APPROVAL:

Utility Approvals: Lead 9. Mute 8-4-04
PNM GAS SERVICES Lead 9. Mute 8-4-04
PNM ELECTRIC SERVICES Date 8-6-04
QWEST COMMUNICATIONS, INC. Date 8-4-04
COMCAST CABLE Date 8/4/04
MIDDLE RIO GRANDE CONSERVANCY DISTRICT Date
City Approvals: J.B. Ford 5-11-04
CITY SURVEYOR: J. M. Howell 8-31-04
REAL PROPERTY DIVISION Date 5-12-04
TRAFFIC ENGINEERING, TRANSPORTATION DIVISION Date 5/12/04
UTILITIES DEVELOPMENT Date 5/12/04
PARKS AND RECREATION DEPARTMENT Date 8/12/04
AMAFCA Date
CITY ENGINEER: Steven Matson Date 8/12/04
DRB CHAIRPERSON, PLANNING DEPARTMENT Date

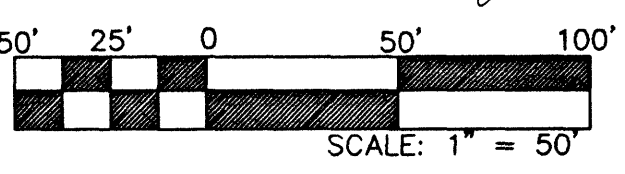
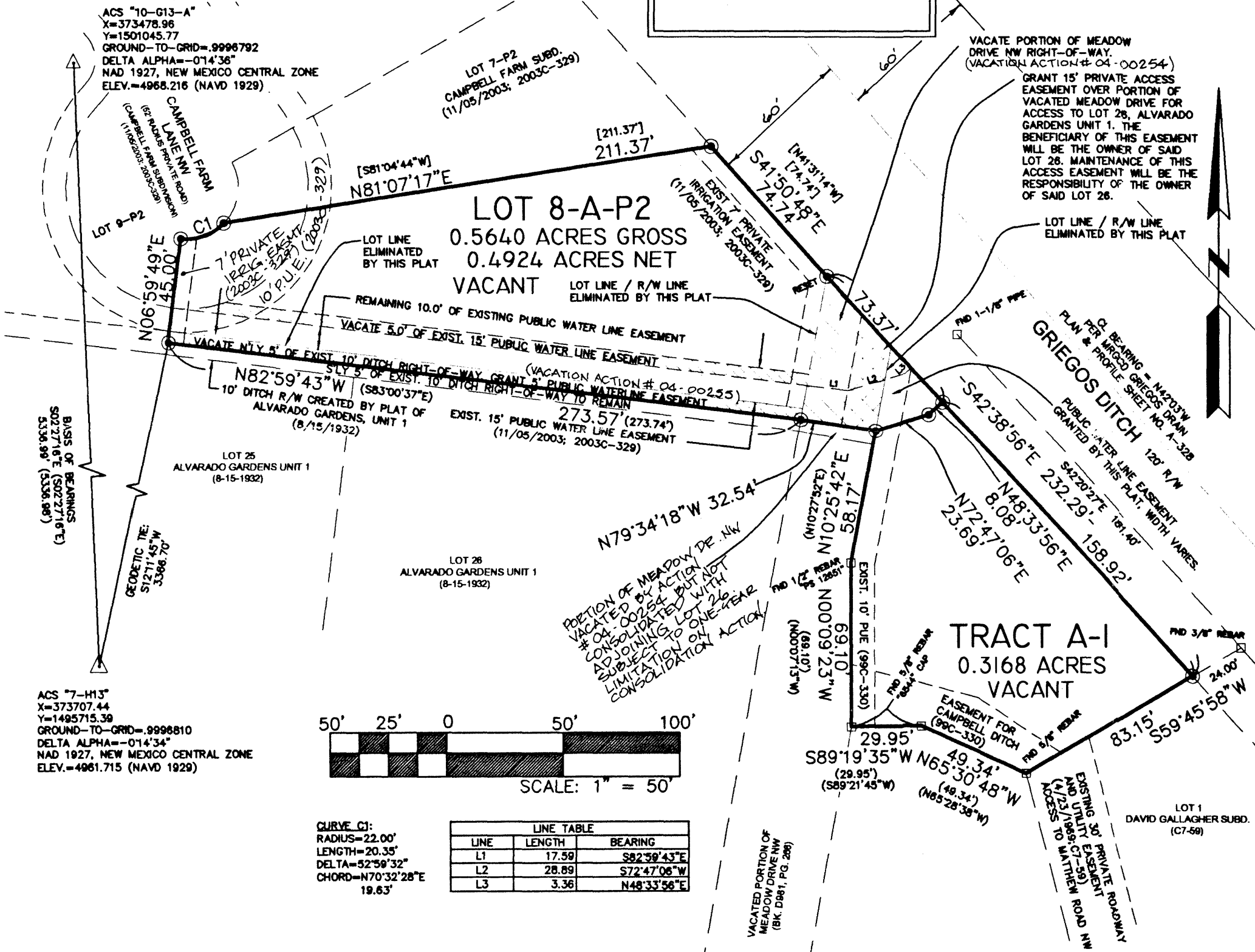


Table with columns: LINE, LENGTH, BEARING. Contains data for three lines.

DISCLOSURE STATEMENT

THE PURPOSE OF THIS PLAT IS TO ADJUST THE LOT LINE BETWEEN 2 LOTS, TO VACATE AN EXISTING PUBLIC RIGHT-OF-WAY, AN EXISTING PUBLIC WATER LINE EASEMENT AND AN EXISTING DITCH RIGHT-OF-WAY/EASEMENT, AND TO GRANT EASEMENTS AS SHOWN HEREON.

FREE CONSENT AND DEDICATION

THE SUBDIVISION SHOWN HEREON IS WITH THE FREE CONSENT AND IN ACCORDANCE WITH THE DESIRES OF THE UNDERSIGNED OWNER(S) AND/OR PROPRIETOR(S) THEREOF. SAID OWNER(S) AND/OR PROPRIETOR(S) DO HEREBY CONSENT TO ALL OF THE FOREGOING AND DO HEREBY CERTIFY THAT THIS SUBDIVISION IS OF THEIR FREE ACT AND DEED.

Entrada Skarsgard 5-11-04
OWNER: ENTRADA DEVELOPMENT LTD. CO. (LOT 8-P2) DATE
BY: GORDON L. SKARSGARD, MANAGING MEMBER AND INDIVIDUALLY
Wayne G. Andrews 5/11/04
OWNER: WAYNE G. ANDREWS (TRACT A) DATE
Mary Louise Andrews 5/11/04
OWNER: MARY LOUISE ANDREWS (TRACT A) DATE

STATE OF NEW MEXICO )
COUNTY OF BERNALILLO ) SS
ACKNOWLEDGED BEFORE ME THIS 11th DAY OF May, 2004,
BY GORDON SKARSGARD
BY: Thomas W. Patrick NOTARY PUBLIC
MY COMMISSION EXPIRES: 10-04-2006

STATE OF NEW MEXICO )
COUNTY OF BERNALILLO ) SS
ACKNOWLEDGED BEFORE ME THIS 11th DAY OF May, 2004,
BY WAYNE G. ANDREWS
BY: Thomas W. Patrick NOTARY PUBLIC
MY COMMISSION EXPIRES: 10-04-2006

MIDDLE RIO GRANDE CONSERVANCY DISTRICT:
APPROVED ON THE CONDITION THAT ALL RIGHTS OF THE MIDDLE RIO GRANDE CONSERVANCY DISTRICT IN EASEMENTS, RIGHTS OF WAY, ASSESSMENTS AND LIENS ARE FULLY RESERVED TO SAID DISTRICT AND THAT IF PROVISION FOR IRRIGATION SOURCE AND EASEMENTS ARE NOT PROVIDED FOR BY THE SUBDIVIDER FOR THE SUBDIVISION, ADDITION OR PLAT, SAID DISTRICT IS ABSOLVED OF ALL OBLIGATIONS TO FURNISH IRRIGATION WATERS AND SERVICES TO ANY PORTION THEREOF, OTHER THAN FROM EXISTING TURNOUTS.
APPROVED: J.F. Ford DATE 8/14/04

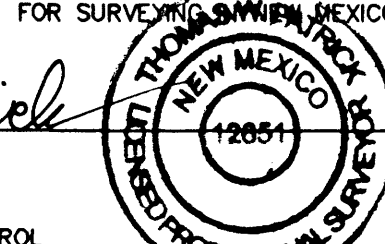
SURVEYORS CERTIFICATION

I, THOMAS W. PATRICK, HEREBY AFFIRM THAT I AM A DULY QUALIFIED REGISTERED PROFESSIONAL SURVEYOR UNDER THE LAWS OF THE STATE OF NEW MEXICO AND DO CERTIFY THAT THIS PLAT WAS PREPARED BY ME OR UNDER MY DIRECT SUPERVISION; SHOWS ACCURATE DIMENSIONS AND LAND AREAS; SHOWS ALL EASEMENTS AND RESTRICTIONS AS SHOWN ON THE PLAT OF RECORD OR MADE KNOWN TO ME BY THE OWNERS AND/OR PROPRIETORS OF THE SUBDIVISION SHOWN HEREON, TITLE COMPANIES, UTILITY COMPANIES OR OTHER PARTIES EXPRESSING AN INTEREST. I FURTHER CERTIFY THAT THIS PLAT MEETS THE MINIMUM REQUIREMENTS FOR MONUMENTATION AND SURVEYS OF THE ALBUQUERQUE CERTIFICATION ORDINANCE AND MEETS THE "MINIMUM STANDARDS FOR SURVEYING IN NEW MEXICO" AND IS TRUE AND CORRECT TO THE BEST OF MY KNOWLEDGE AND BELIEF.

THOMAS W. PATRICK
NEW MEXICO PROFESSIONAL SURVEYOR NO. 12651

SURVEY NOTES:

- 1. BEARINGS ARE GRID (NMSPC CENTRAL ZONE, NAD1927) AND ARE BASED ON CITY OF ALBUQUERQUE CONTROL STATIONS "10-G13-A" AND "7-H13". ALL DISTANCES ARE GROUND DISTANCES. AVERAGE GROUND-TO-GRID FACTOR IS 0.9996801.
2. BEARINGS AND DISTANCES IN PARENTHESES ( ) PER RECORD DATA FROM THE PLAT OF TRACT A, LANDS OF ANDREWS (12/09/1999; 99C-330). BEARINGS AND DISTANCES IN BRACKETS [ ] PER RECORD PLAT OF CAMPBELL FARM SUBD. (11/05/2003; 2003C-329).
3. BY APPROVING THIS PLAT, THE MIDDLE RIO GRANDE CONSERVANCY DISTRICT CONFIRMS THAT IT HAS NO CLAIM OR INTEREST IN THE 10' DITCH EASEMENT SHOWN HEREON.



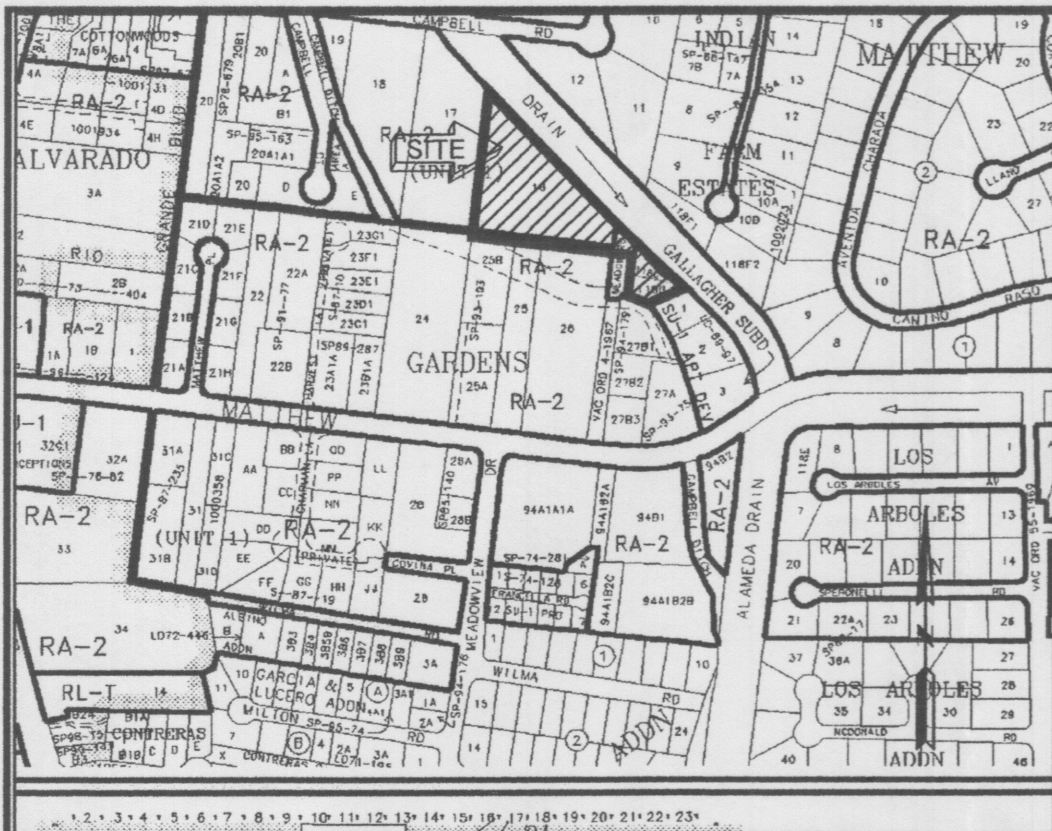
5-10-2004 DATE

SHEET 1 OF 1

community sciences corporation logo and contact information.

COMMUNITY SCIENCES CORPORATION - CORRALES, NEW MEXICO - (505) 897-0000

COMMUNITY SCIENCES CORPORATION - CORRALES, NEW MEXICO - (505) 897-0000



G-13-Z VICINITY MAP NOT TO SCALE

PUBLIC UTILITY EASEMENTS

PUBLIC UTILITY EASEMENTS (P.U.E.) SHOWN ON THIS PLAT ARE GRANTED FOR THE COMMON AND JOINT USE OF: A. PNM ELECTRIC SERVICES... B. PNM GAS SERVICES... C. QWEST FOR THE INSTALLATION, MAINTENANCE AND SERVICE OF ALL BURIED COMMUNICATION LINES... D. COMCAST CABLE... E. CITY OF ALBUQUERQUE FOR THE INSTALLATION, MAINTENANCE AND SERVICE OF UNDERGROUND WATER AND SEWER LINES... F. EASEMENTS FOR ELECTRIC TRANSFORMERS/SWITCHGEARS...

DISCLOSURE STATEMENT

THE PURPOSE OF THIS PLAT IS TO ADJUST THE LOT LINE BETWEEN 2 LOTS, TO VACATE AN EXISTING PUBLIC RIGHT-OF-WAY, AN EXISTING PUBLIC WATER LINE EASEMENT AND AN EXISTING DITCH RIGHT-OF-WAY/EASEMENT, AND TO GRANT EASEMENTS AS SHOWN HEREON.

FREE CONSENT AND DEDICATION

THE SUBDIVISION SHOWN HEREON IS WITH THE FREE CONSENT AND IN ACCORDANCE WITH THE DESIRES OF THE UNDERSIGNED OWNER(S) AND/OR PROPRIETOR(S) THEREOF. SAID OWNER(S) AND/OR PROPRIETOR(S) DO HEREBY CONSENT TO ALL OF THE FOREGOING AND DO HEREBY CERTIFY THAT THIS SUBDIVISION IS OF THEIR FREE ACT AND DEED.

Signature of Gordon Skarsgard, 5-11-04
OWNER: ENTRADA DEVELOPMENT LTD. CO. (LOT 8-P2)
BY: GORDON L. SKARSGARD, MANAGING MEMBER AND INDIVIDUALLY
Signature of Wayne G. Andrews, 5/11/04
OWNER: WAYNE G. ANDREWS (TRACT A)
Signature of Mary Louise Andrews, 5/11/04
OWNER: MARY LOUISE ANDREWS (TRACT A)

STATE OF NEW MEXICO )
COUNTY OF BERNALILLO ) SS
ACKNOWLEDGED BEFORE ME THIS 11th DAY OF May, 2004,
BY GORDON SKARSGARD
BY: Thomas W. Patrick, NOTARY PUBLIC
MY COMMISSION EXPIRES: 10-04-2006

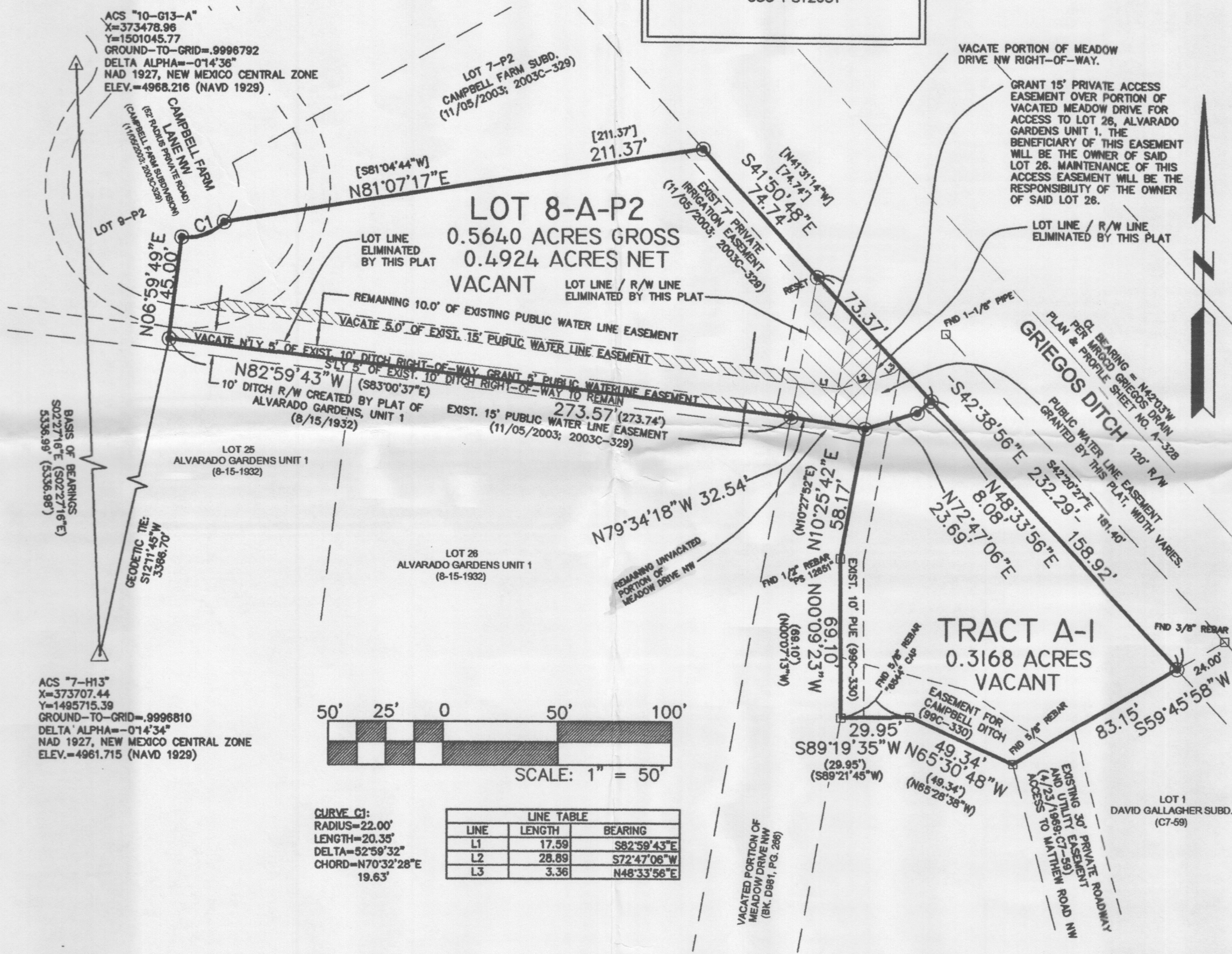
STATE OF NEW MEXICO )
COUNTY OF BERNALILLO ) SS
ACKNOWLEDGED BEFORE ME THIS 11th DAY OF May, 2004,
BY WAYNE G. ANDREWS
BY: Thomas W. Patrick, NOTARY PUBLIC
MY COMMISSION EXPIRES: 10/04/06

LEGAL DESCRIPTION

LOT 8-P2 OF THE PLAT OF CAMPBELL FARM SUBDIVISION AS THE SAME IS SHOWN AND DESIGNATED ON THE PLAT THEREOF RECORDED IN THE OFFICE OF THE COUNTY CLERK, BERNALILLO COUNTY, NEW MEXICO ON NOVEMBER 5, 2003 IN BOOK 2003C, PAGE 329 AND TRACT A, LANDS OF ANDREWS, AS THE SAME IS SHOWN AND DESIGNATED ON THE PLAT THEREOF RECORDED IN THE OFFICE OF THE COUNTY CLERK, BERNALILLO COUNTY, NEW MEXICO ON MAY 12, 1998 IN VOL.99C, FOL.330. AND A PORTION OF MEADOW DRIVE NW VACATED BY VACATION ACTION # \_\_\_\_\_ AND THE NORTHERLY 5' OF THE 10' WIDE DITCH RIGHT-OF-WAY SHOWN ON THE PLAT OF ALVARADO GARDENS AS THE SAME IS SHOWN AND DESIGNATED ON THE PLAT THEREOF RECORDED IN THE OFFICE OF THE COUNTY CLERK, BERNALILLO COUNTY, NEW MEXICO ON AUGUST 15, 1932 AND VACATED BY VACATION ACTION # \_\_\_\_\_. ALL TOGETHER BEING MORE PARTICULARLY DESCRIBED BY METES AND BOUNDS AS FOLLOWS: BEGINNING AT THE SOUTHWESTERLY CORNER OF THE PROPERTY HEREIN DESCRIBED, SAID POINT BEING LOCATED ON THE SOUTHERLY LINE OF THE SAID 10' DITCH RIGHT-OF-WAY/EASEMENT AND FROM WHENCE ACS STATION "7-H13" BEARS S12°11'45"W, 3366.70 FEET; RUNNING THENCE N06°59'49"E, 50.00 FEET; THENCE 20.35 FEET ALONG THE ARC OF A 22.00 FOOT RADIUS CURVE TO THE LEFT (CENTRAL ANGLE=52°59'32"; CHORD BEARS N70°32'28"E, 19.63 FEET); THENCE N81°07'17"E, 211.37 FEET TO A POINT ON THE MRGCD GRIEGOS DRAIN SOUTHWESTERLY RIGHT-OF-WAY LINE; THENCE ALONG SAID RIGHT-OF-WAY LINE THE FOLLOWING TWO (2) COURSES: 1. S41°50'48"E, 74.74 FEET; 2. S42°38'56"E, 232.29 FEET; THENCE LEAVING SAID RIGHT-OF-WAY LINE S59°45'58"W, 83.15 FEET; THENCE N65°30'48"W, 49.34 FEET; THENCE S89°19'35"W, 29.95 FEET; THENCE N00°09'23"W, 69.10 FEET; THENCE N10°25'42"E, 58.17 FEET; THENCE N79°34'18"W, 32.54 FEET; THENCE N82°59'43"W, 273.57 FEET TO THE POINT OF BEGINNING. CONTAINS 0.8808 ACRES, MORE OR LESS

MONUMENT LEGEND

- FOUND MONUMENT AS NOTED
SET #5 REBAR W/2" ALUMINUM CAP STAMPED "CSC PS12651"



LINE TABLE
LINE LENGTH BEARING
L1 17.59 S82°59'43"E
L2 28.89 S72°47'06"W
L3 3.36 N48°33'56"E

PLAT OF LOT 8-A-P2, CAMPBELL FARM SUBDIVISION AND TRACT A-1, LANDS OF ANDREWS

BEING A LOT LINE ADJUSTMENT PLAT OF LOT 8-P2, CAMPBELL FARM SUBDIVISION AND TRACT A, LANDS OF ANDREWS WITH A VACATION OF A PORTION OF MEADOW DRIVE NW AND A PORTION OF A DITCH RIGHT-OF-WAY SITUATE WITHIN PROJECTED SEC. 6, T.10 N., R.3 E., N.M.P.M., TOWN OF ALBUQUERQUE GRANT CITY OF ALBUQUERQUE BERNALILLO COUNTY, NEW MEXICO MAY, 2004

VACATION ACTIONS:

PORTION OF MEADOW DRIVE NW: VACATION ACTION DATE
5' DITCH RIGHT-OF-WAY/EASEMENT: VACATION ACTION DATE
PORTION OF EXISTING PUBLIC WATER LINE EASEMENT: VACATION ACTION DATE

LOT DATA:

CASE NO. 1003232
GROSS LOT ACREAGE 0.8808 ACRE
ZONE ATLAS INDEX NO. G-13-Z
NO. OF EXISTING TRACTS 1
NO. OF EXISTING LOTS 1
NO. OF LOTS CREATED 1
NO. OF TRACTS CREATED 1
MILES OF FULL WIDTH STREETS CREATED 0
S.P. TALOS LOG 2001422067

PROJECT NUMBER: 1003232

Application Number: 4DRB-00258-002541-00255

PLAT APPROVAL:

APPROVED BY DRB

Utility Approvals:

Table with columns for utility/service (PNM Gas, PNM Electric, Qwest, Comcast, Middle Rio Grande, City Surveyor, Real Property Division, Traffic Engineering, Utilities Development, Parks and Recreation, AMAFCA, City Engineer, DRB Chairperson) and Date.

TREASURERS CERTIFICATION:

THIS IS TO CERTIFY THAT TAXES ARE CURRENT AND PAID ON UPC #s: LOT 8-P2, CAMPBELL FARM SUBDIVISION, UPC# 101306011213331102 PROPERTY OWNER OF RECORD: ENTRADA DEVELOPMENT LTD. CO. TRACT A, LANDS OF ANDREWS, UPC# 10130601510430902 PROPERTY OWNER OF RECORD: WAYNE G. AND MARY LOUISE ANDREWS

SURVEYORS CERTIFICATION

I, THOMAS W. PATRICK, HEREBY AFFIRM THAT I AM A DULY QUALIFIED REGISTERED PROFESSIONAL SURVEYOR UNDER THE LAWS OF THE STATE OF NEW MEXICO AND DO CERTIFY THAT THIS PLAT WAS PREPARED BY ME OR UNDER MY DIRECT SUPERVISION; SHOWS ACCURATE DIMENSIONS AND LAND AREAS; SHOWS ALL EASEMENTS AND RESTRICTIONS AS SHOWN ON THE PLAT OF RECORD OR MADE KNOWN TO ME BY THE OWNERS AND/OR PROPRIETORS OF THE SUBDIVISION SHOWN HEREON, TITLE COMPANIES, UTILITY COMPANIES OR OTHER PARTIES EXPRESSING AN INTEREST. I FURTHER CERTIFY THAT THIS PLAT MEETS THE MINIMUM REQUIREMENTS FOR MONUMENTATION AND SURVEYS OF THE ALBUQUERQUE SUBDIVISION ORDINANCE AND MEETS THE "MINIMUM STANDARDS FOR SURVEYING IN NEW MEXICO" AND IS TRUE AND CORRECT TO THE BEST OF MY KNOWLEDGE AND BELIEF.

THOMAS W. PATRICK
NEW MEXICO PROFESSIONAL SURVEYOR NO. 12651



MIDDLE RIO GRANDE CONSERVANCY DISTRICT:

APPROVED ON THE CONDITION THAT ALL RIGHTS OF THE MIDDLE RIO GRANDE CONSERVANCY DISTRICT IN EASEMENTS, RIGHTS OF WAY, ASSESSMENTS AND LIENS ARE FULLY RESERVED TO SAID DISTRICT AND THAT IF PROVISION FOR IRRIGATION SOURCE AND EASEMENTS ARE NOT PROVIDED FOR BY THE SUBDIVIDER FOR THE SUBDIVISION, ADDITION OR PLAT, SAID DISTRICT IS ABSOLVED OF ALL OBLIGATIONS TO FURNISH IRRIGATION WATERS AND SERVICES TO ANY PORTION THEREOF, OTHER THAN FROM EXISTING TURNOUTS.

SURVEY NOTES:

- 1. BEARINGS ARE GRID (NMSPC CENTRAL ZONE, NAD1927) AND ARE BASED ON CITY OF ALBUQUERQUE CONTROL STATIONS "10-G13-A" AND "7-H13". ALL DISTANCES ARE GROUND DISTANCES. AVERAGE GROUND-TO-GRID FACTOR IS 0.9996801.
2. BEARINGS AND DISTANCES IN PARENTHESES ( ) PER RECORD DATA FROM THE PLAT OF TRACT A, LANDS OF ANDREWS (12/09/1999; 99C-330). BEARINGS AND DISTANCES IN BRACKETS [ ] PER RECORD PLAT OF CAMPBELL FARM SUBD. (11/05/2003; 2003C-329).
3. BY APPROVING THIS PLAT, THE MIDDLE RIO GRANDE CONSERVANCY DISTRICT CONFIRMS THAT IT HAS NO CLAIM OR INTEREST IN THE 10' DITCH EASEMENT SHOWN HEREON.



Table with project details: Date (2-19-2004), Scale (1" = 50'), Crew (JDG, TWP), Drawn (TWP), Job No. (N655), Land Planning (P.O. Box 1328), Engineering (Corrales, N.M. 87048), Surveying ((505)897-0000).

