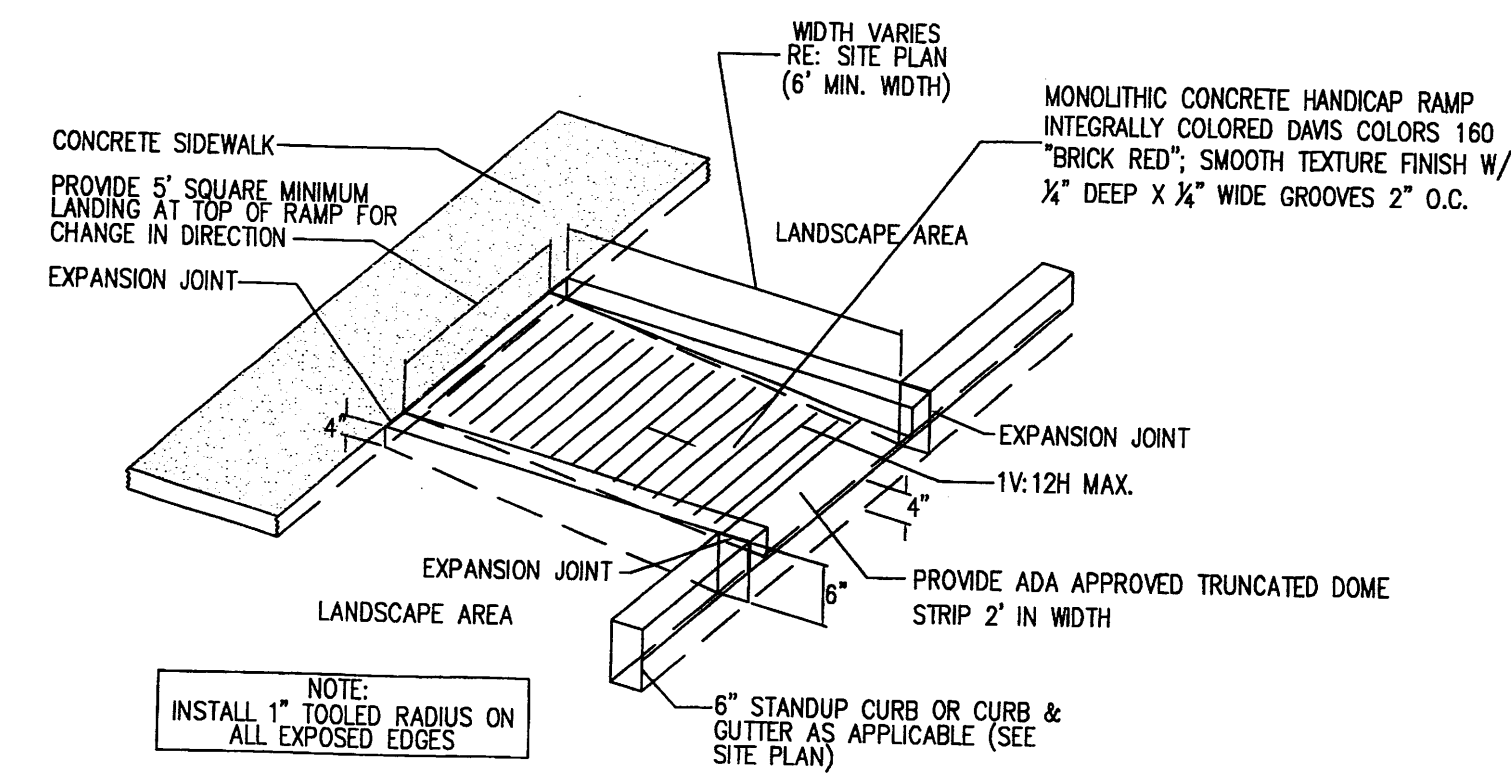
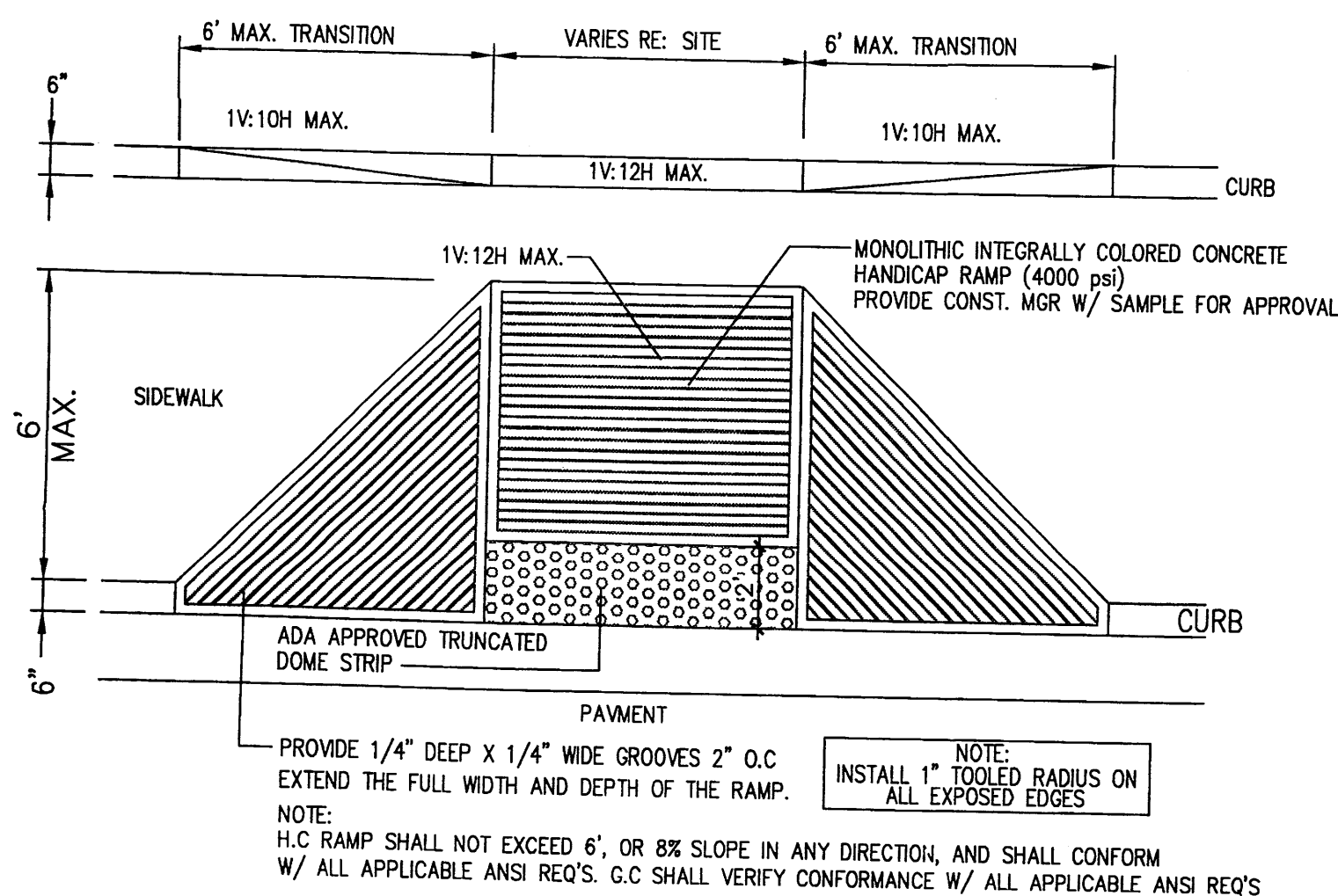


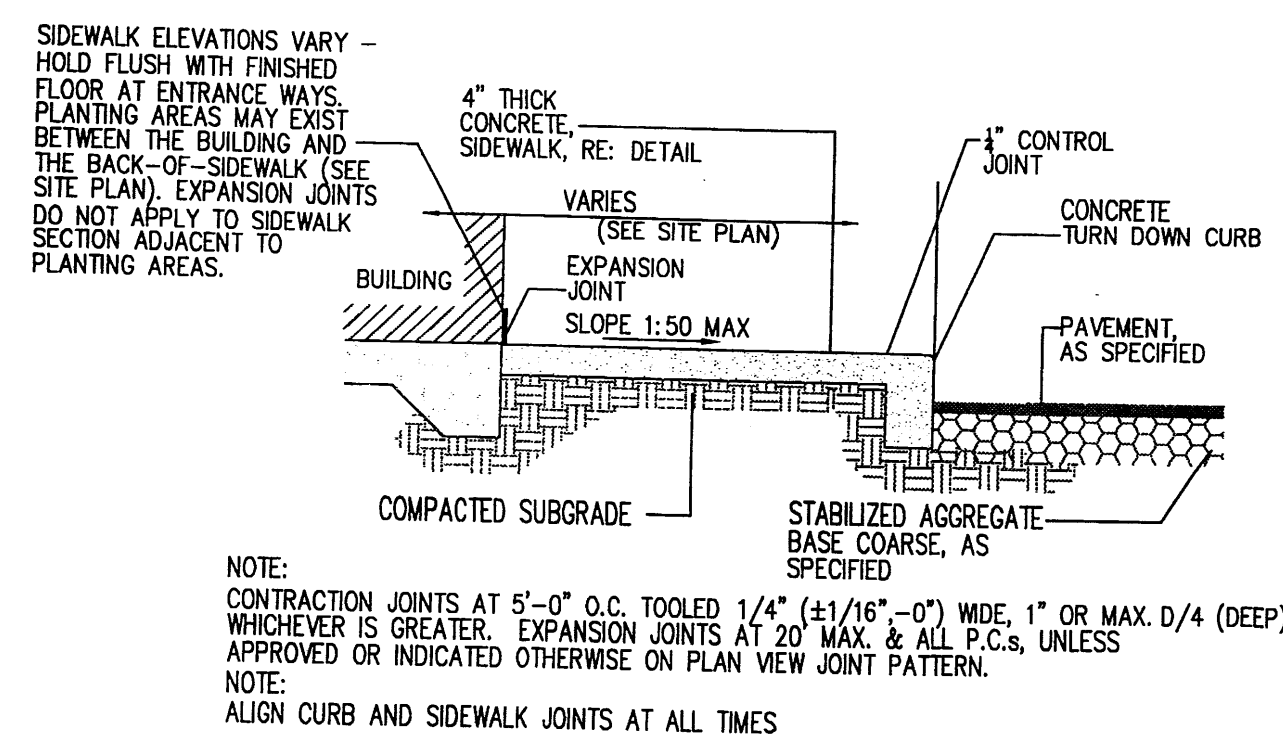
**17 TAPERED H.C RAMP**  
Scale: N.T.S.



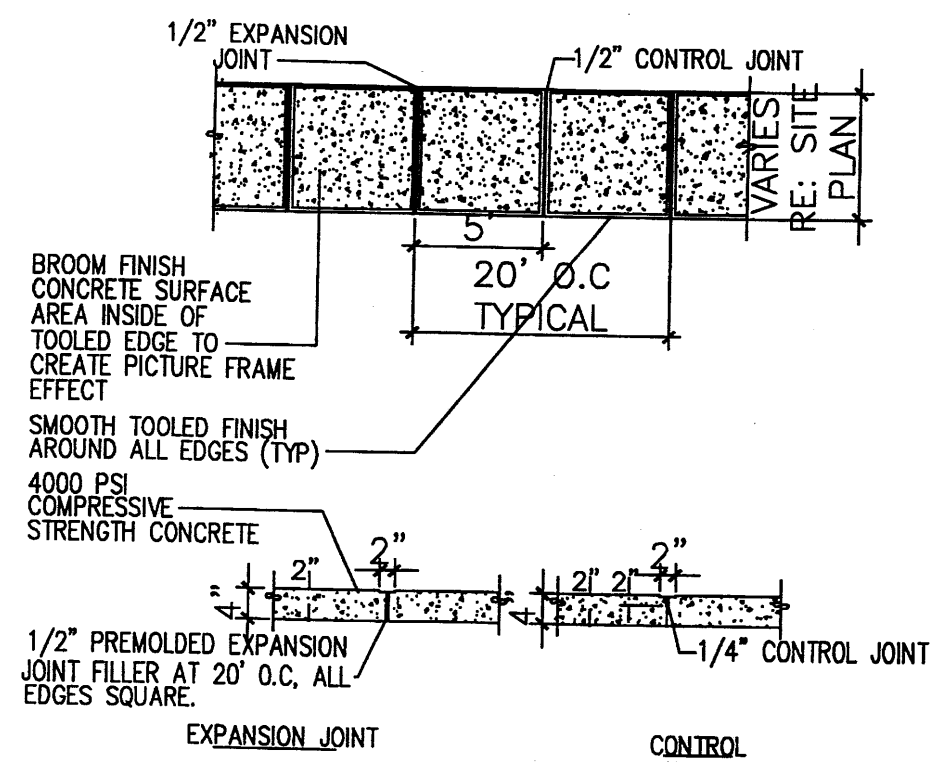
**16 CURBED H.C RAMP**  
Scale: N.T.S.



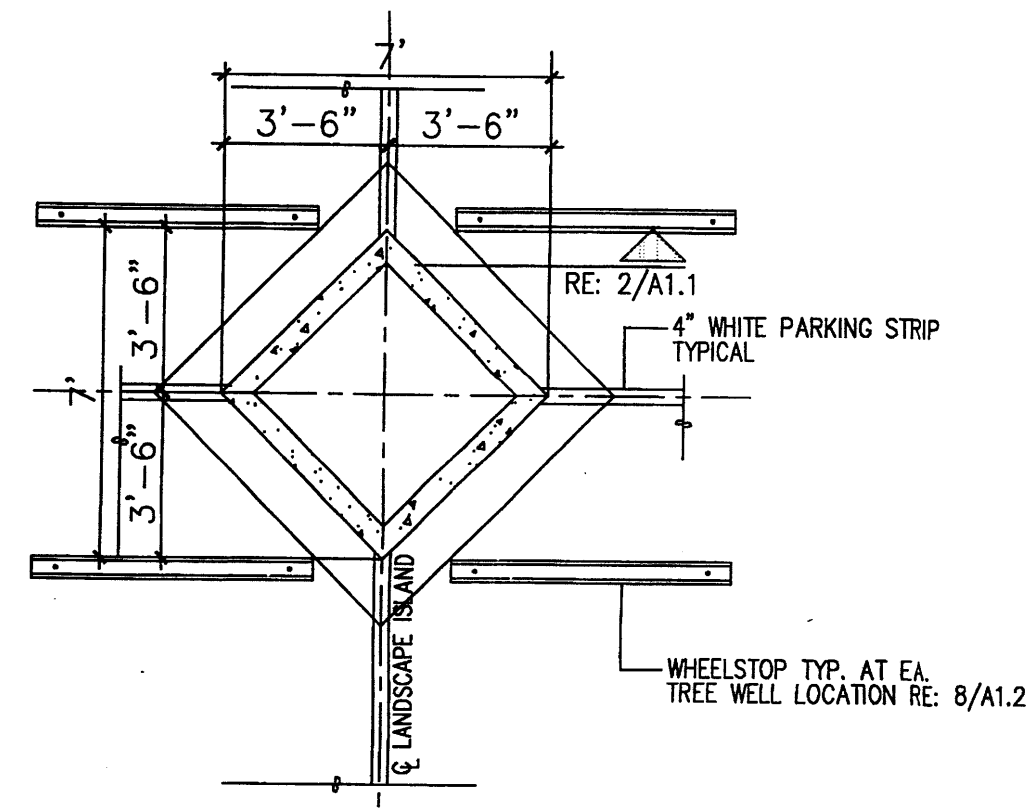
**15 FLARED H.C RAMP**  
Scale: N.T.S.



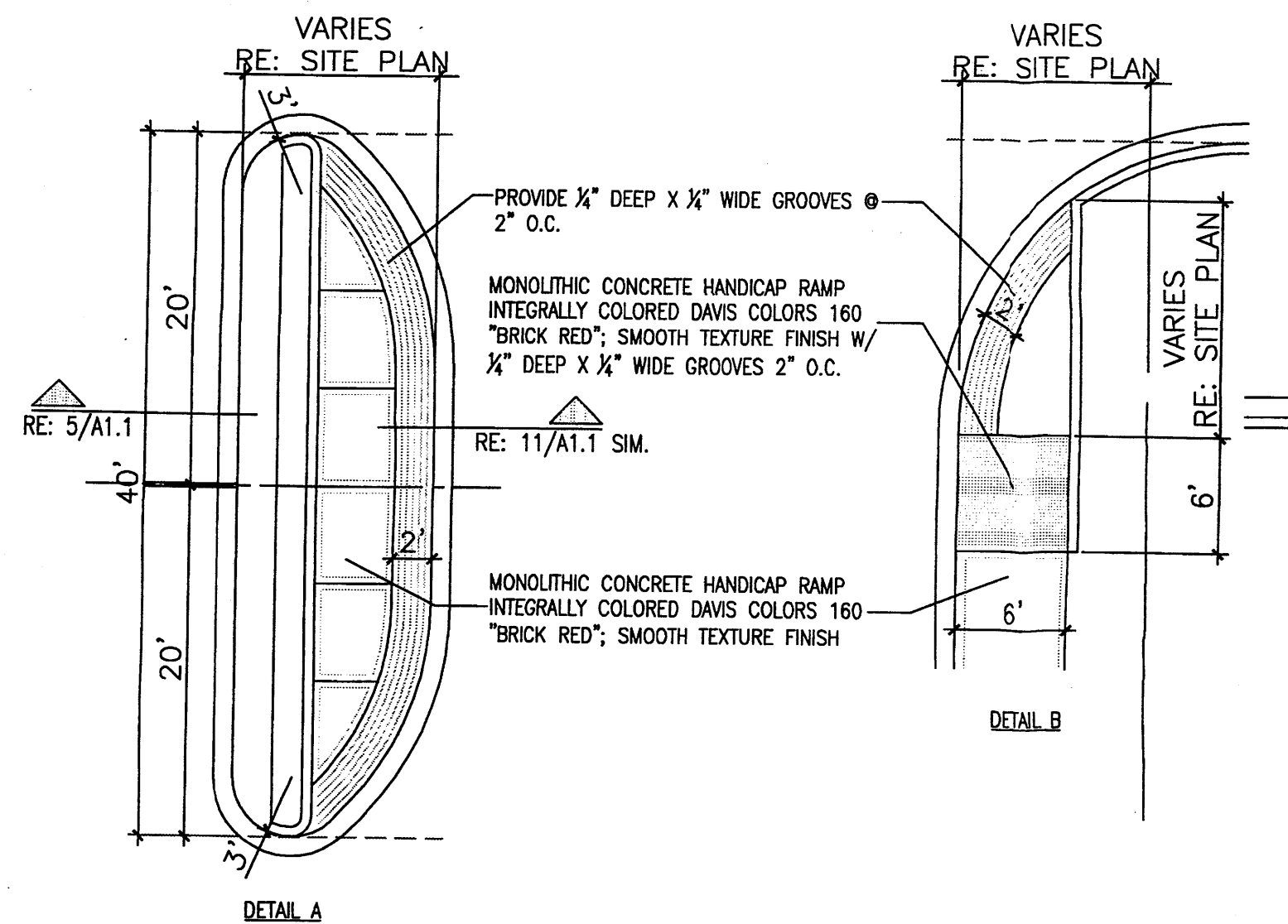
**14 SIDEWALK W/ TURNDOWN CURB SECTION**  
Scale: N.T.S.



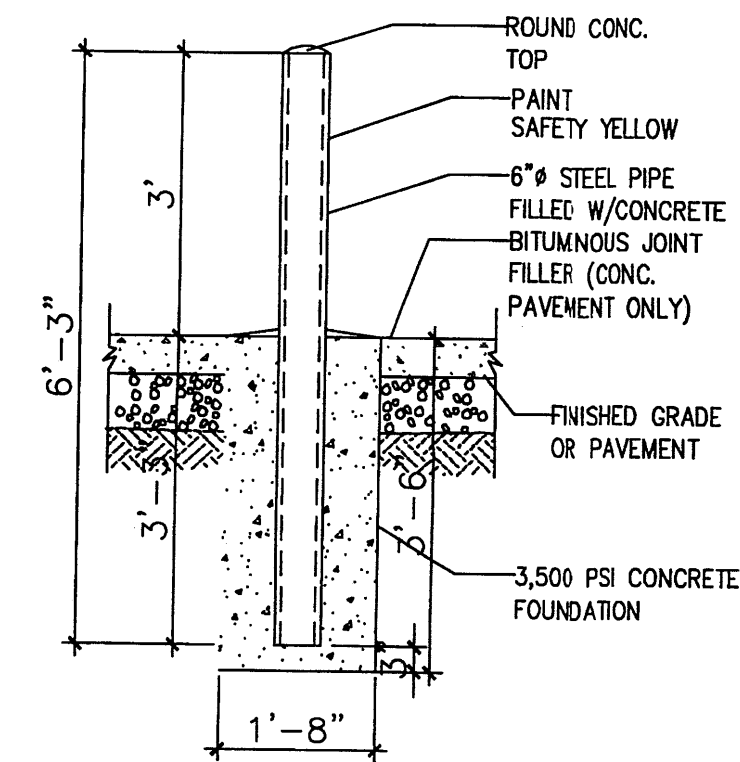
**11 TYPICAL SIDEWALK**  
Scale: N.T.S.



**13 DIAMOND DETAIL**  
Scale: N.T.S.

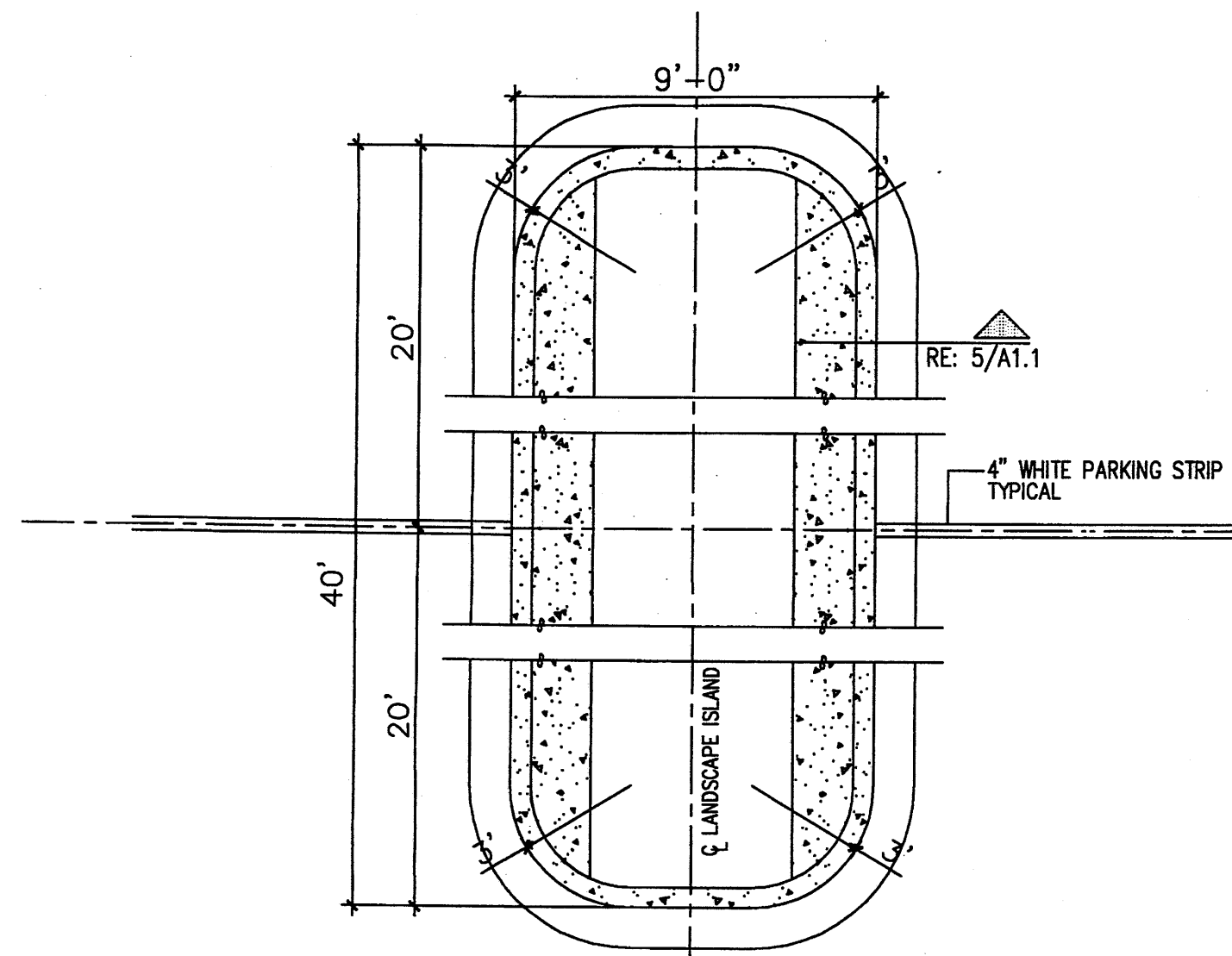


**12 TYP. END ISLAND W/ WALK**  
Scale: N.T.S.

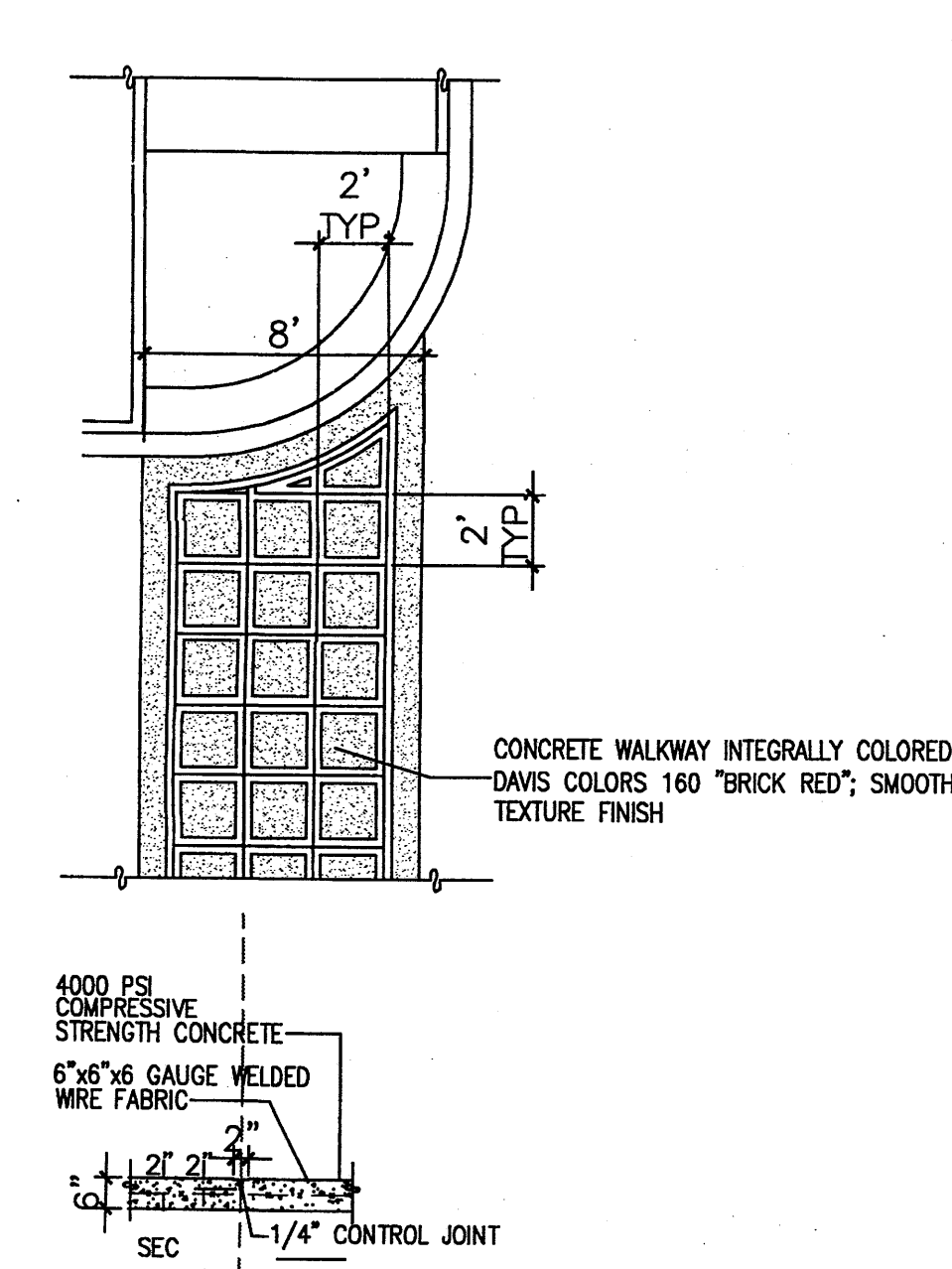


**10 BOLLARD DETAIL**  
Scale: 1/2\"/>

**9 HEADER CURB W/ STEP OFF DETAIL**  
Scale: N.T.S.

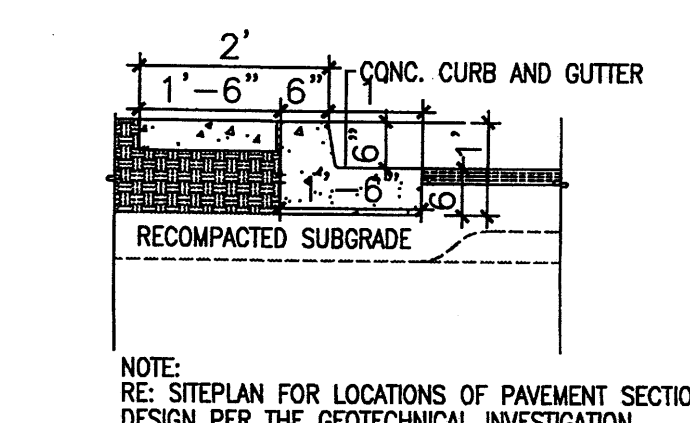


**8 ISLAND DETAIL**  
Scale: N.T.S.

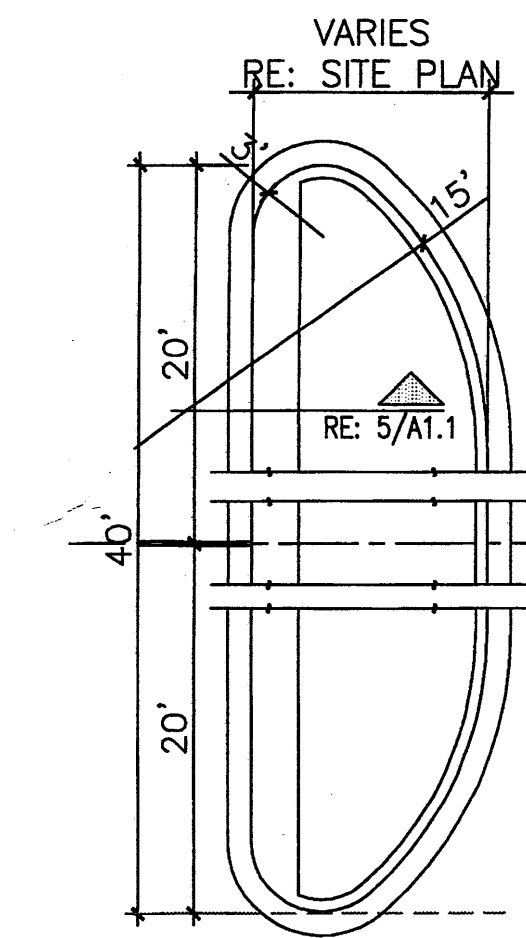


**7 TYP. CONC. CROSSWALK**  
Scale: N.T.S.

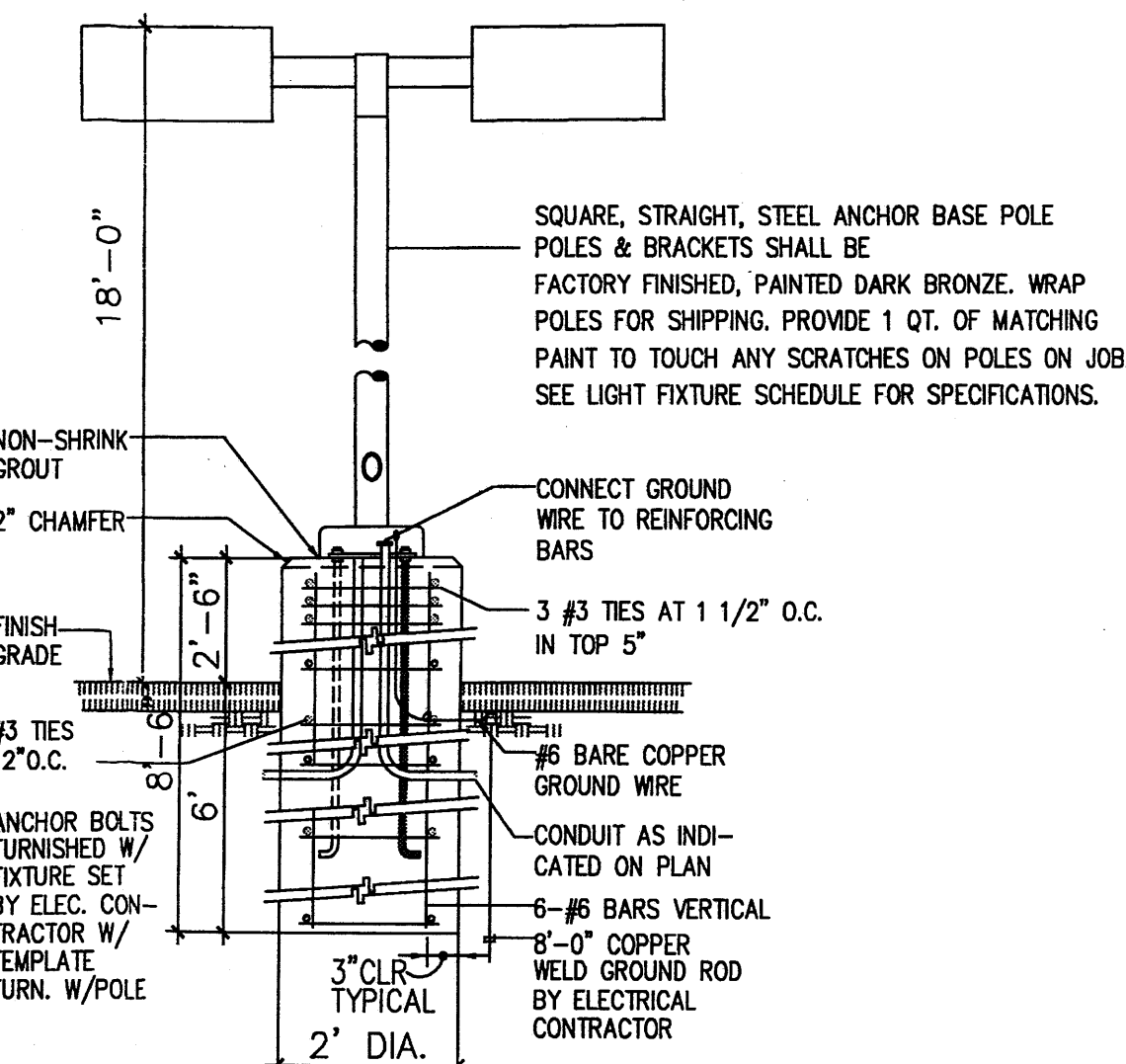
**6 HEADER CURB DETAIL**  
Scale: N.T.S.



**5 ISLAND CURB DETAIL**  
Scale: N.T.S.

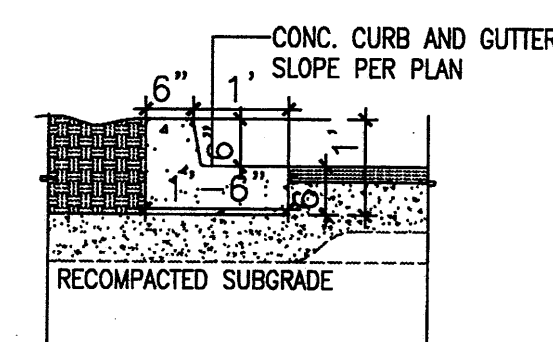


**4 END ISLAND DETAIL**  
Scale: N.T.S.



**3 LIGHT POLE DETAIL**  
Scale: N.T.S.

**2 TYP. CURB DETAIL**  
Scale: N.T.S.



REV	DATE	BY	REVISION
1			
2			
3			
4			
5			
6			
7			
8			
9			
10			
11			
12			
13			
14			
15			
16			
17			

**MODULUS ARCHITECTS**  
2325 SAN PEDRO N.E. SUITE 2-B  
ALBUQUERQUE, NEW MEXICO 87110  
PHONE (505) 338-1499 FAX (505) 338-1498  
TOLL FREE 1-866-224-2161

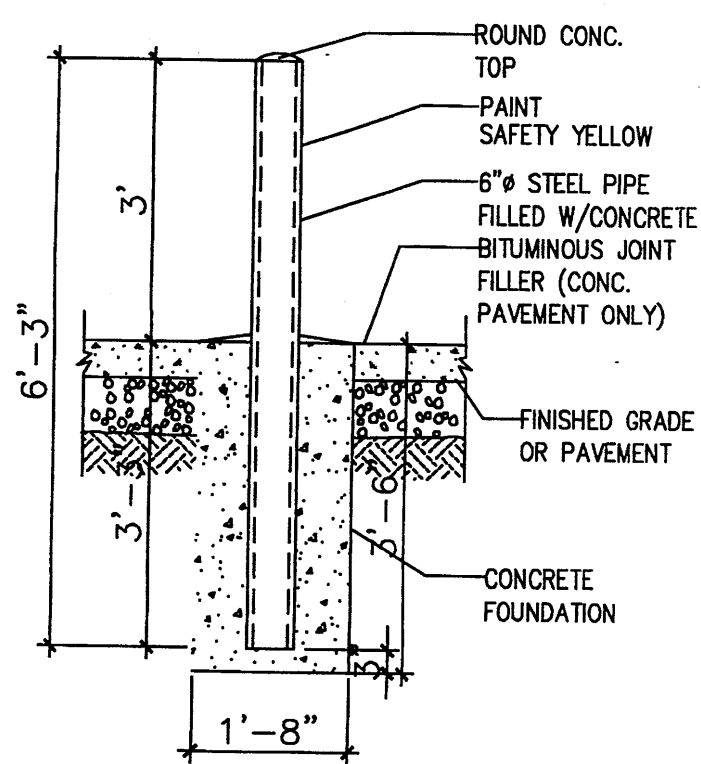


PROJECT TITLE: **ASSISTED LIVING FACILITY**  
LOT 4-A-1-A HIGH ASSETS WAY N.W. ALBUQUERQUE, NM  
JOB NO.: AS  
DRAWN BY: NSW  
PROJECT MANAGER: STEPHEN DUNBAR, AIA  
SHEET TITLE: **SITE DETAILS**

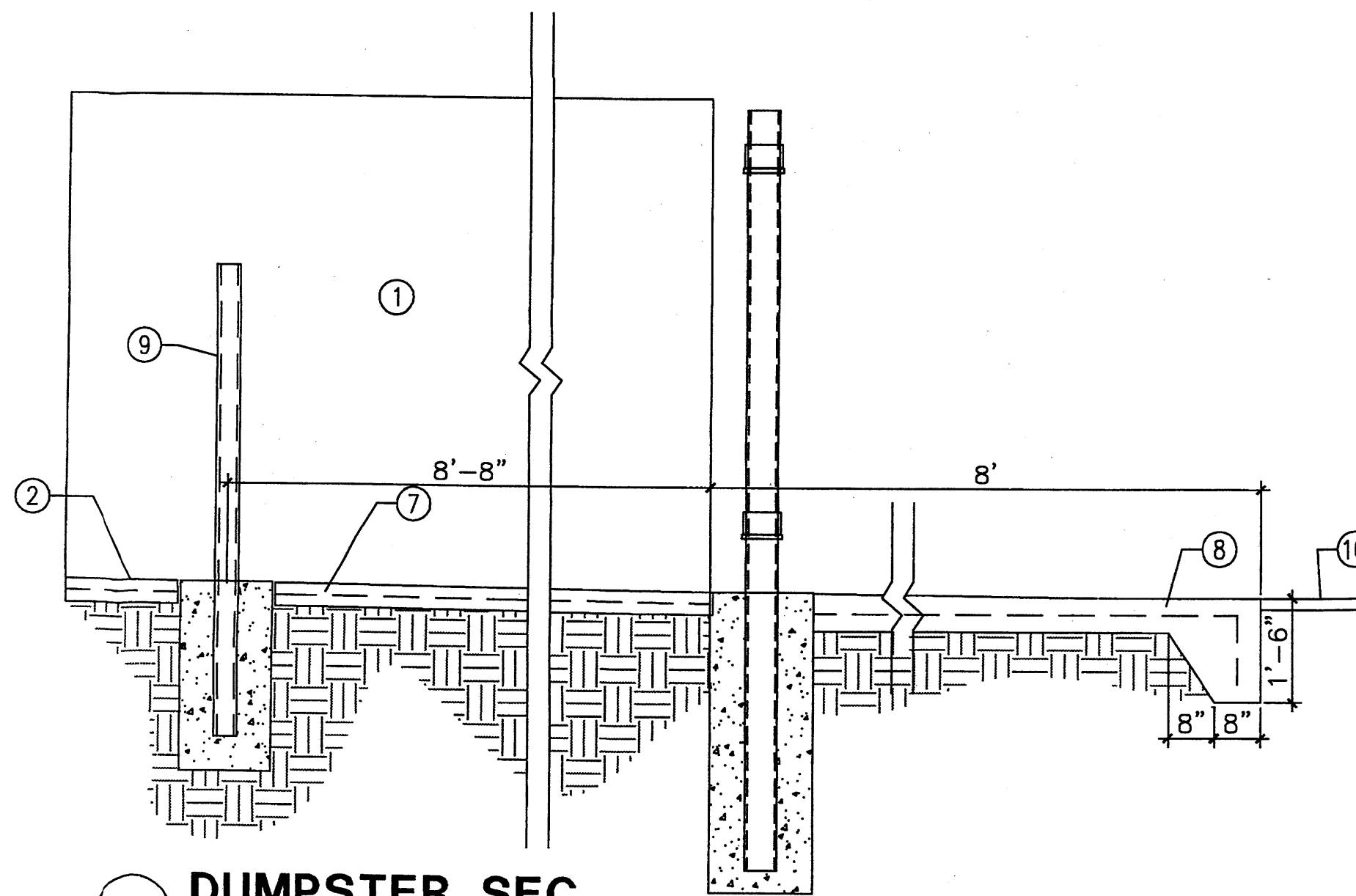
DATE: 2/18/11	SHEET: A1.1
SCALE: AS NOTED	



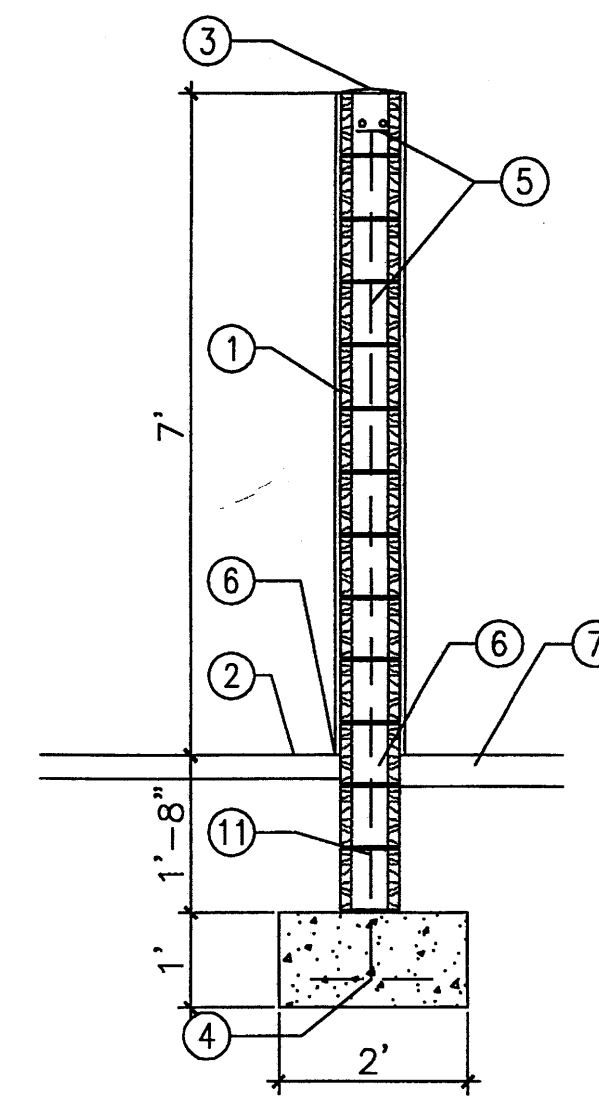




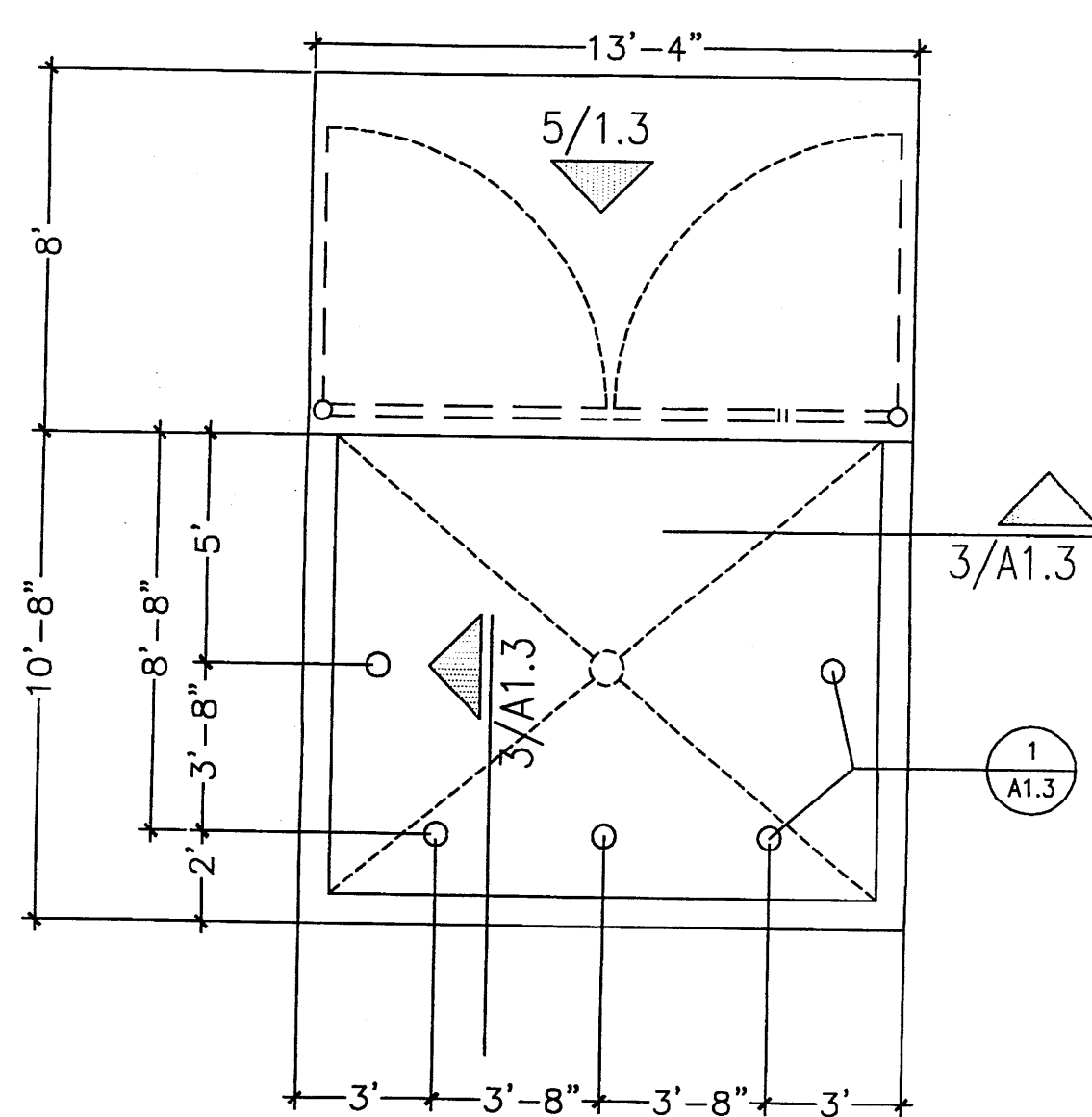
**1 BOLLARD DETAIL**  
Scale: 1/2"=1'-0"



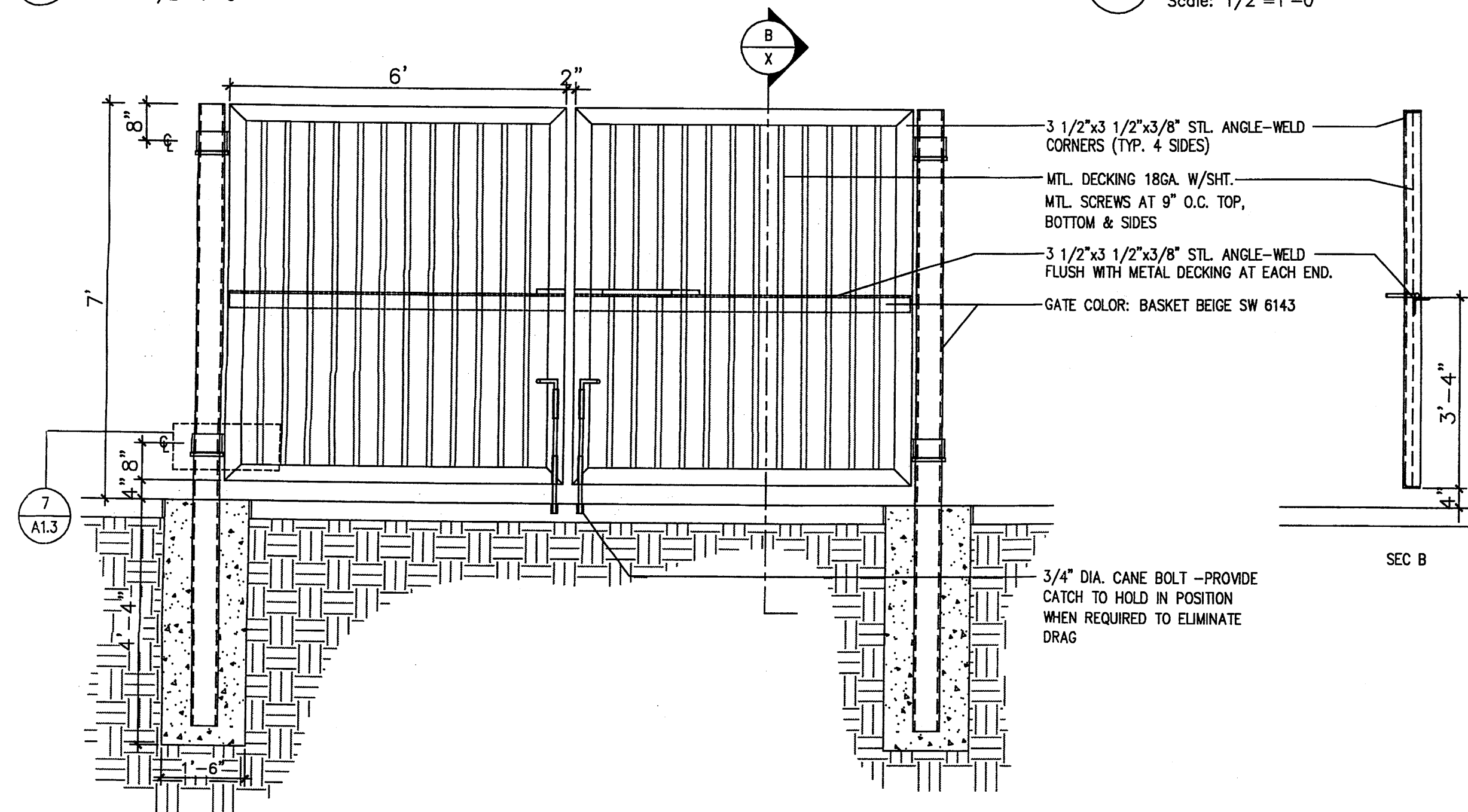
**2 DUMPSTER SEC**  
Scale: 1/2"=1'-0"



**3 DUMPSTER SEC**  
Scale: 1/2"=1'-0"



**4 DUMPSTER PLAN**  
Scale: 1/2"=1'-0"

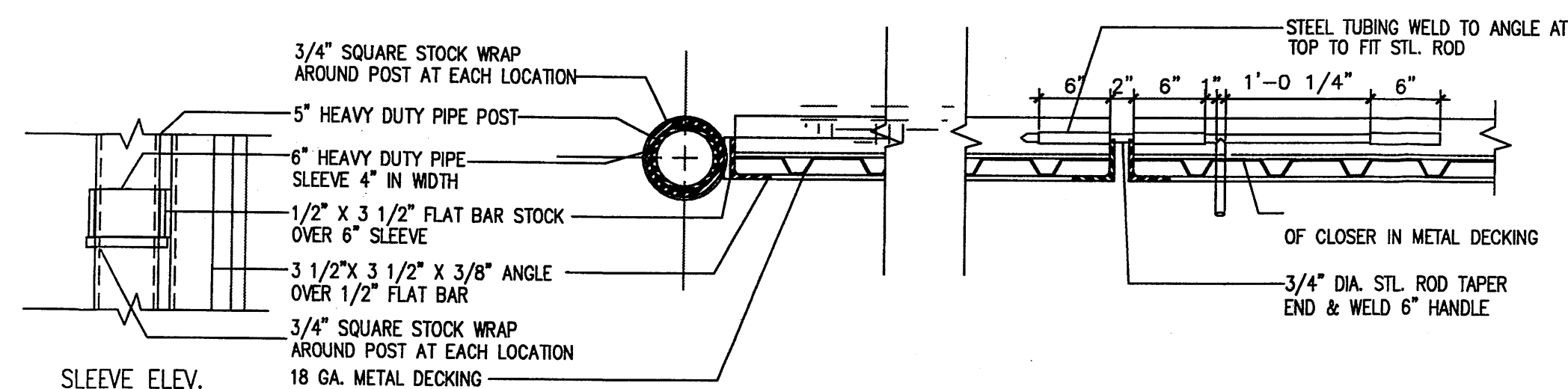


**5 GATE ELEV.**  
Scale: 1/2"=1'-0"

**KEYED NOTES**

1. 8" CMU WALL WITH 2 COAT SYN. STUCCO SYSTEM. COLOR: MATCH BLDG-BASE COLOR
2. FINISH GRADE.
3. SLOPE STUCCO CAP.
4. 4-#4 BARS CONT. @ BOTTOM OF FOOTING #4 @ 16" O.C. ACROSS BOTTOM OF FOOTING.
5. 2-#5 BARS @ TOP KNOCK-OUT BLOCK BOND BEAM, CONTINUOUS; #5 BARS @ 32" O.C. VERTICAL. GROUT REINFORCED CELLS, DURAWALL @ 16" O.C. HORIZONTAL.
6. 1/2" EXPANSION JOINT MATERIAL
7. 4" CONCRETE SLAB 3000 PSI 3/4" AGGREGATE WITH 6X6 - 10X10 W/M.
8. 6" CONCRETE APRON 3000 PSI 3/4" AGGREGATE WITH 6X6 - 10X10 W/M W/ TURNDOWN EDGE.
9. 6" CONCRETE FILLED PIPE IN 18" DIA. X 2'-6" DEEP CONC. FOOTING, PAINT TO MATCH STUCCO FINISH.
10. ASPHALT PAVING
11. GROUT ALL CELLS SOLID BELOW GRADE, TYPICAL.

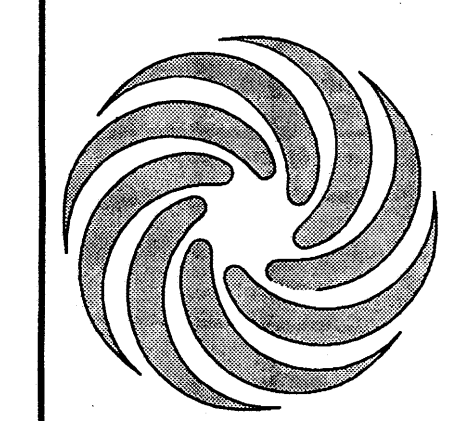
**6 ENCLOSURE NOTES**  
Scale: N.T.S.



**7 GATE POST/SLIDE BOLT DET.**  
Scale: 1"=1'-0"

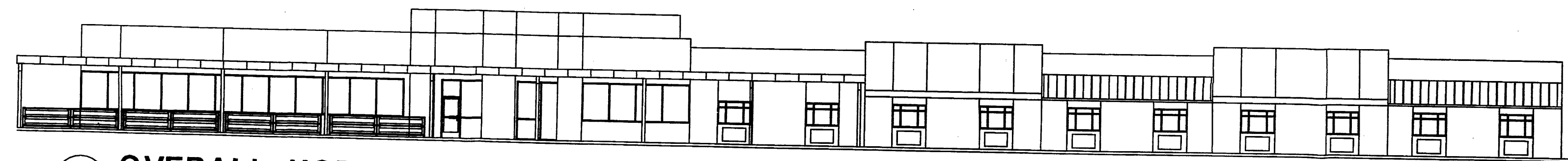
REV	DATE	BY	REVISION
6			
5			
4			
3			
2			
1			

**MODULUS ARCHITECTS**  
2325 SAN PEDRO N.E. SUITE 2-B  
ALBUQUERQUE, NEW MEXICO 87110  
PHONE (505) 338-1499 FAX (505) 338-1498  
TOLL FREE 1-866-224-2161

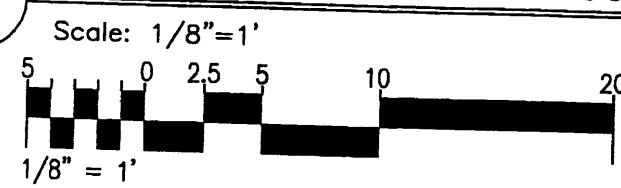


PROJECT TITLE	ASSISTED LIVING FACILITY
LOT	LOT 4-A-1-A HIGH ASSETS WAY N.W.
ALBUQUERQUE, NM	ALBUQUERQUE, NM
PROJECT MANAGER	STEPHEN DUNBAR, AIA
DRAWN BY:	MSW
JOB NO.	AS
SHEET TITLE	SITE DETAILS

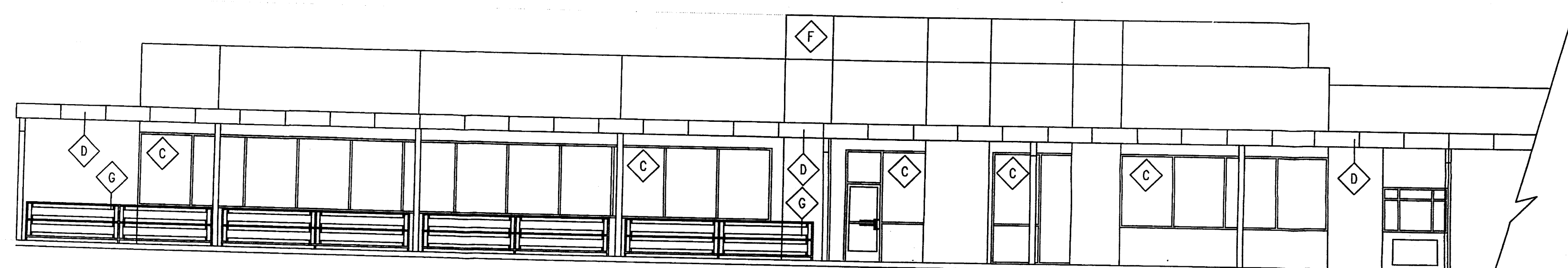
DATE:	2/18/11
SCALE:	AS NOTED
SHEET:	A1.3
of:	



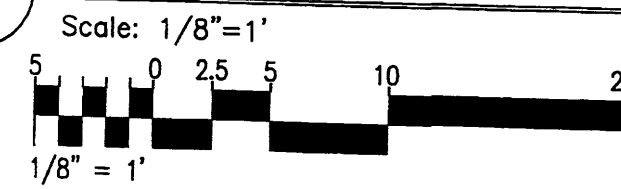
**1 OVERALL NORTHERN ELEVATION**



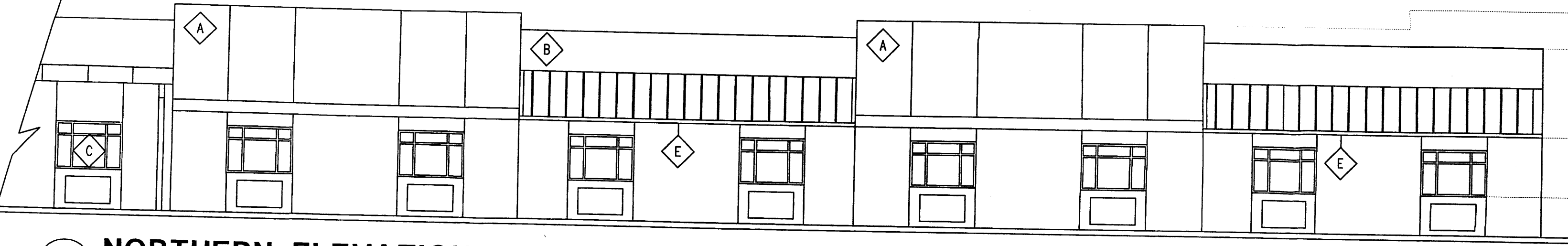
122'-0" TOP OF PARAPET  
 116'-6" TOP OF PARAPET  
 111'-0" BOT OF CANOPY  
 100'-0" FINISH FLOOR ELEV.



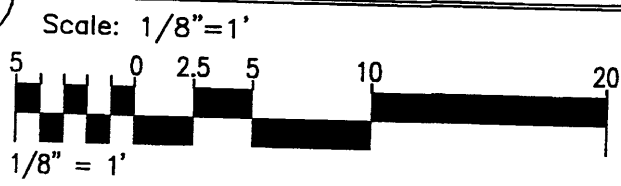
**2 NORTHERN ELEVATION**



118'-0" TOP OF PARAPET  
 116'-6" TOP OF PARAPET  
 108'-8" BOT OF AWNING  
 103'-6" WIN SILL ELEV.  
 100'-0" FINISH FLOOR ELEV.



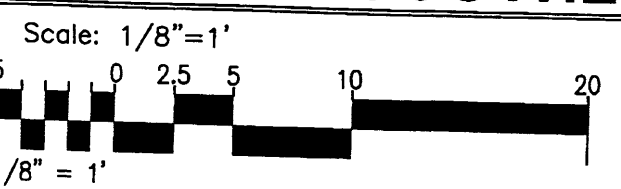
**3 NORTHERN ELEVATION**



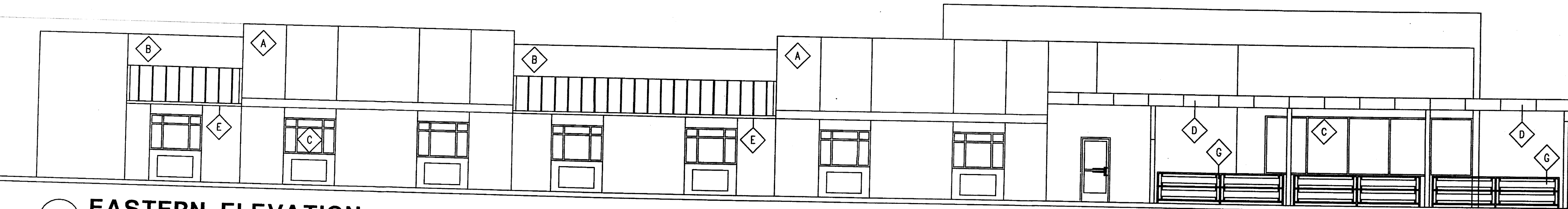
118'-0" TOP OF PARAPET  
 116'-6" TOP OF PARAPET  
 109'-8" TOP OF CANOPY ELEV.  
 100'-0" FINISH FLOOR ELEV.



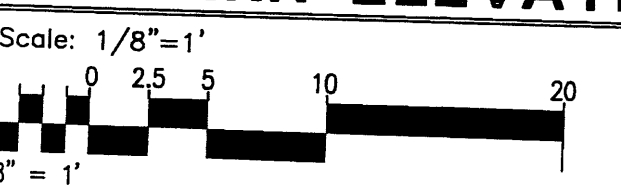
**4 PARTIAL SOUTHERN ELEVATION**



118'-0" TOP OF PARAPET  
 116'-6" TOP OF PARAPET  
 108'-8" BOT OF AWNING  
 100'-0" FINISH FLOOR ELEV.



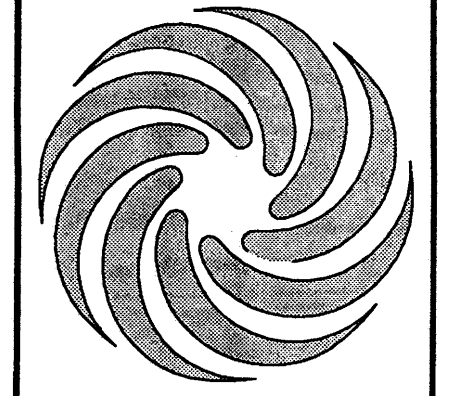
**5 EASTERN ELEVATION**



Keyed Color / Material Schedule		
A	3 COAT STUCCO SYSTEM	DARK BROWN
B	3 COAT STUCCO SYSTEM	LIGHT BROWN
C	STOREFRONT MATERIAL	ANODIZED SILVER KAWNEER TRI-FAB 461-T OR EQUAL
D	METAL PANEL SYSTEM	GREY METAL WALL PANEL SYSTEM
E	METAL AWNING SYSTEM	GREY STANDING SEAM METAL ROOFING
F	3 COAT STUCCO SYSTEM	RUST RED
G	PAINTED STEEL STRUCTURE	OFF WHITE

REV	DATE	BY	REVISION
1			
2			
3			
4			
5			

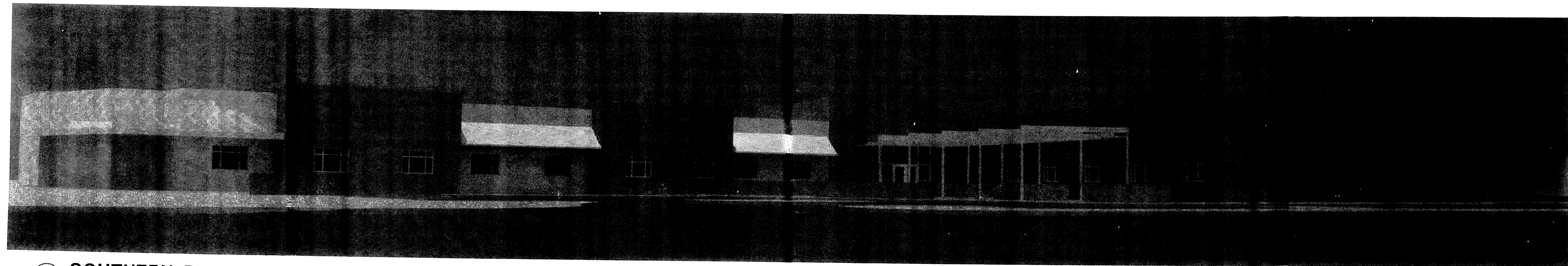
**MODULUS ARCHITECTS**  
 2325 SAN PEDRO N.E. SUITE 2-B  
 ALBUQUERQUE, NEW MEXICO 87110  
 PHONE (505) 338-1499 FAX (505) 338-1498  
 TOLL FREE 1-866-224-2161



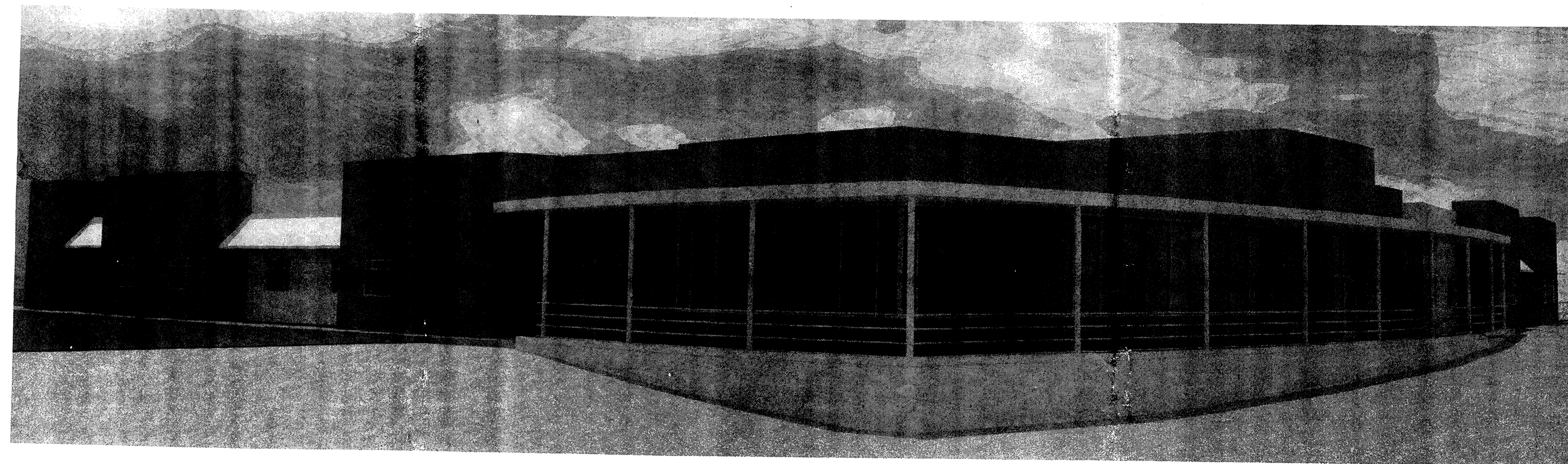
PROJECT TITLE: ASSISTED LIVING FACILITY  
 LOT 4-A-1-A HIGH ASSETS WAY N.W.  
 ALBUQUERQUE, NM  
 PROJECT MANAGER: STEPHEN DUNBAR, AIA  
 DRAWN BY: MSW  
 JOB NO.: AS  
 SHEET TITLE: CONCEPTUAL ELEVATIONS

DATE: 2/18/11  
 SCALE: AS NOTED  
 SHEET: A4.0





**1 SOUTHERN PERSPECTIVE VIEW**  
Scale: N.T.S

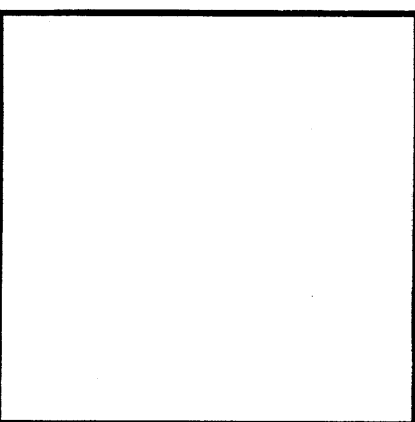
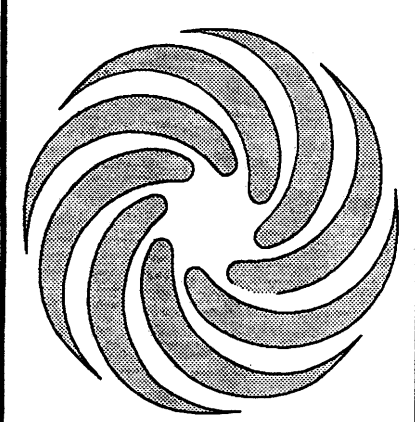


**2 NORTHERN PERSPECTIVE VIEW**  
Scale: N.T.S

Keyed Color / Material Schedule	
◆ A	3 COAT STUCCO SYSTEM DARK BROWN
◆ B	3 COAT STUCCO SYSTEM LIGHT BROWN
◆ C	STOREFRONT MATERIAL ANODIZED SILVER KAWNEER TRI-FAB 451-T OR EQUAL
◆ D	METAL PANEL SYSTEM GREY METAL WALL PANEL SYSTEM
◆ E	METAL AWNING SYSTEM GREY STANDING SEAM METAL ROOFING
◆ F	3 COAT STUCCO SYSTEM RUST RED
◆ G	PAINTED STEEL STRUCTURE OFF WHITE

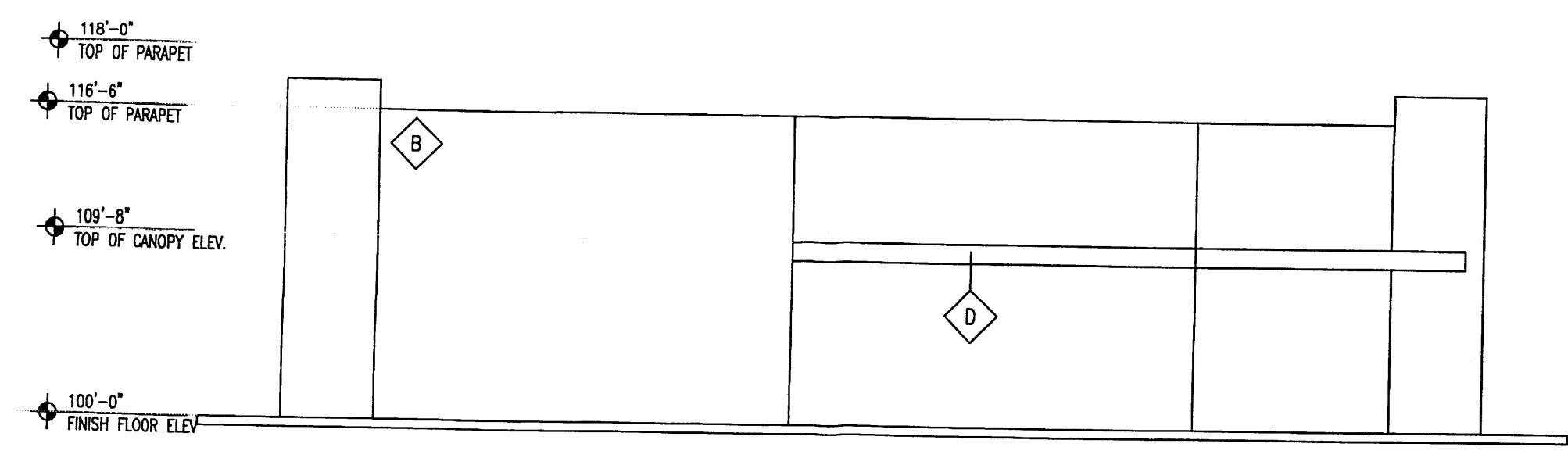
REV	DATE	BY	REVISION
1			
2			
3			
4			
5			

**MODULUS ARCHITECTS**  
2325 SAN PEDRO N.E., SUITE 2-B  
ALBUQUERQUE, NEW MEXICO 87110  
PHONE (505) 338-1499 FAX (505) 338-1498  
TOLL FREE 1-866-224-2161

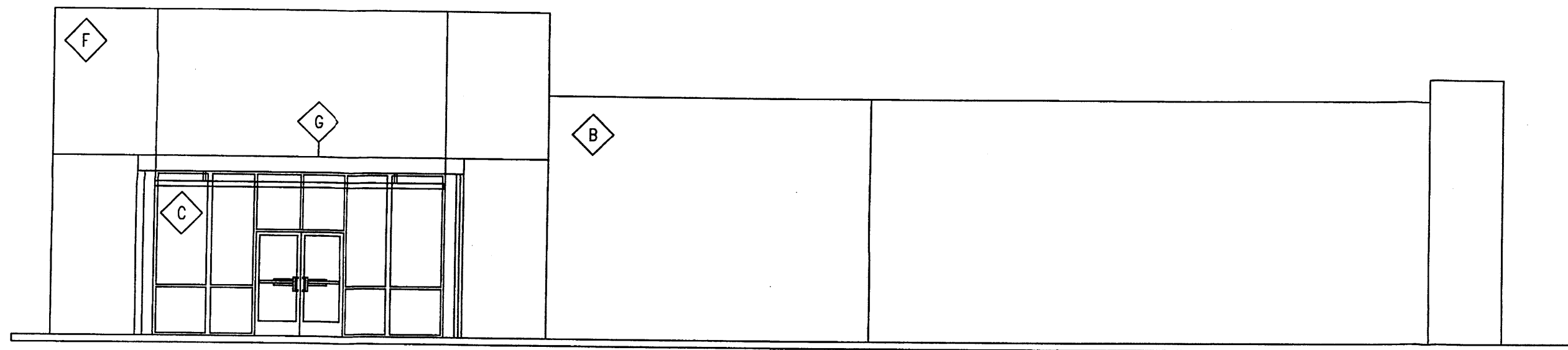


PROJECT TITLE: **ASSISTED LIVING FACILITY**  
LOT: 4-A-1-A HIGH ASSETS WAY N.W. ALBUQUERQUE, NM  
PROJECT MANAGER: STEPHEN DUNBAR, AIA AS  
DRAWN BY: NSW  
SHEET TITLE: **CONCEPTUAL ELEVATIONS**

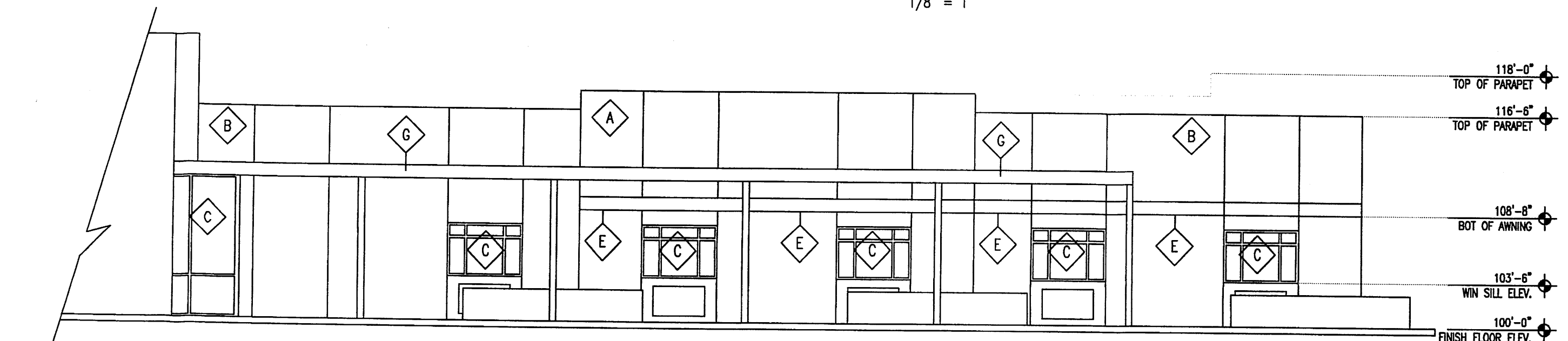
DATE: 2/18/11  
SCALE: AS NOTED  
sheet: **A4.1**



**3 WESTERN ELEVATION**  
Scale: 1/8"=1'  
1/8" = 1'

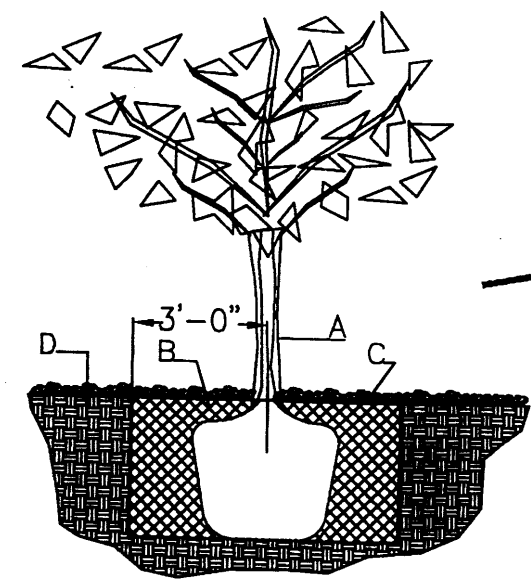


**4 PARTIAL SOUTHERN ELEVATION**  
Scale: 1/8"=1'  
1/8" = 1'



**5 PARTIAL WESTERN ELEVATION**  
Scale: 1/8"=1'  
1/8" = 1'

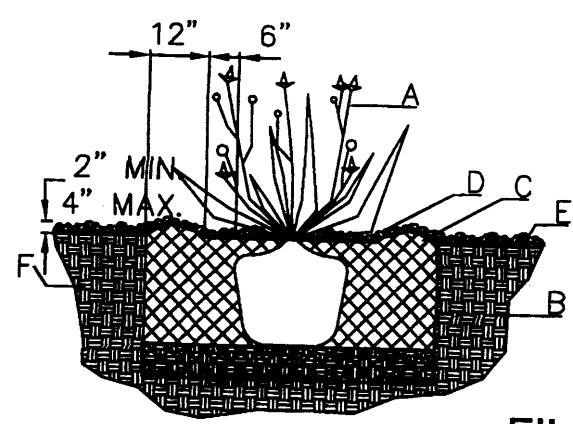




**TREE PLANTING DETAIL**

- NTS  
GENERAL NOTES:
1. ROOTBALL SHALL BE PLACED ON UNDISTURBED SOIL TO PREVENT TREE FROM SETTLING.
  2. TOP OF ROOTBALL INDICATED LEVEL AT WHICH TREE WAS GROWN AND DUG; THIS REPRESENTS THE LEVEL AT WHICH THE TREE SHOULD BE INSTALLED; THAT LEVEL MAY BE EXCEEDED BY ONLY A ONE INCH LAYER OF SOIL.
  3. PRIOR TO BACKFILLING TREE, ALL WIRE, ROPE AND SYNTHETIC MATERIALS SHALL BE REMOVED FROM THE TREE AND THE PLANTING PIT.
  4. PRIOR TO BACKFILLING ALL BURLAP SHALL BE CUT AWAY EXCEPT FROM BOTTOM OF THE ROOTBALL.

- CONSTRUCTION NOTES:
- A. TREE
  - B. BACKFILL WITH EXISTING SOIL.
  - C. 3" DEPTH OF GRAVEL MULCH.
  - D. UNDISTURBED SOIL.



LOT 3-A-2-A

FILED 2006C, FOLIO 280

**SHRUB PLANTING DETAIL**

- NTS  
GENERAL NOTES:
1. THE OUTSIDE DIAMETER OF THE WATER RETENTION BASIN SHALL BE TWICE THE DIAMETER OF THE SHRUB PLANTING PIT.

- CONSTRUCTION NOTES:
- A. SHRUB.
  - B. BACKFILL WITH EXISTING SOIL.
  - C. EARTH BERM AROUND WATER RETENTION BASIN.
  - D. 3" DEPTH OF GRAVEL MULCH.
  - E. FINISH GRADE.
  - F. UNDISTURBED SOIL.

**LANDSCAPE NOTES:**  
Landscape maintenance shall be the responsibility of the Property Owner. The Property Owner shall maintain street trees in a living, healthy, and attractive condition.

It is the intent of this plan to comply with the City of Albuquerque Water Conservation Landscaping and Water Waste Ordinance planting restriction approach. Approval of this plan does not constitute or imply exemption from water waste provisions of the Water Conservation Landscaping and Water Waste Ordinance.

Water management is the sole responsibility of the Property Owner. All landscaping will be in conformance with the City of Albuquerque Zoning Code, Street Tree Ordinance, Pollen Ordinance, and Water Conservation Landscaping and Water Waste Ordinance. In general, water conservative, environmentally sound landscape principles will be followed in design and installation.

Plant beds shall achieve 75% live ground cover at maturity.

Gravel over Filter Fabric to a minimum depth of 3" shall be placed in all landscape areas which are not designated to receive native seed.

**IRRIGATION NOTES:**  
Irrigation shall be a complete underground system with Trees to receive 1 Netafim spiral (50' length) with 3 loops at a final radius of 4.5' from tree trunk, pinned in place. Netafim shall have emitters 12" o.c. with a flow of .6 gph. Shrubs to receive (2) 1.0 GPH Drip Emitters. Drip and Bubbler systems to be tied to 1/2" poly pipe with flush caps at each end. Trees and shrubs shall be on separate valves.

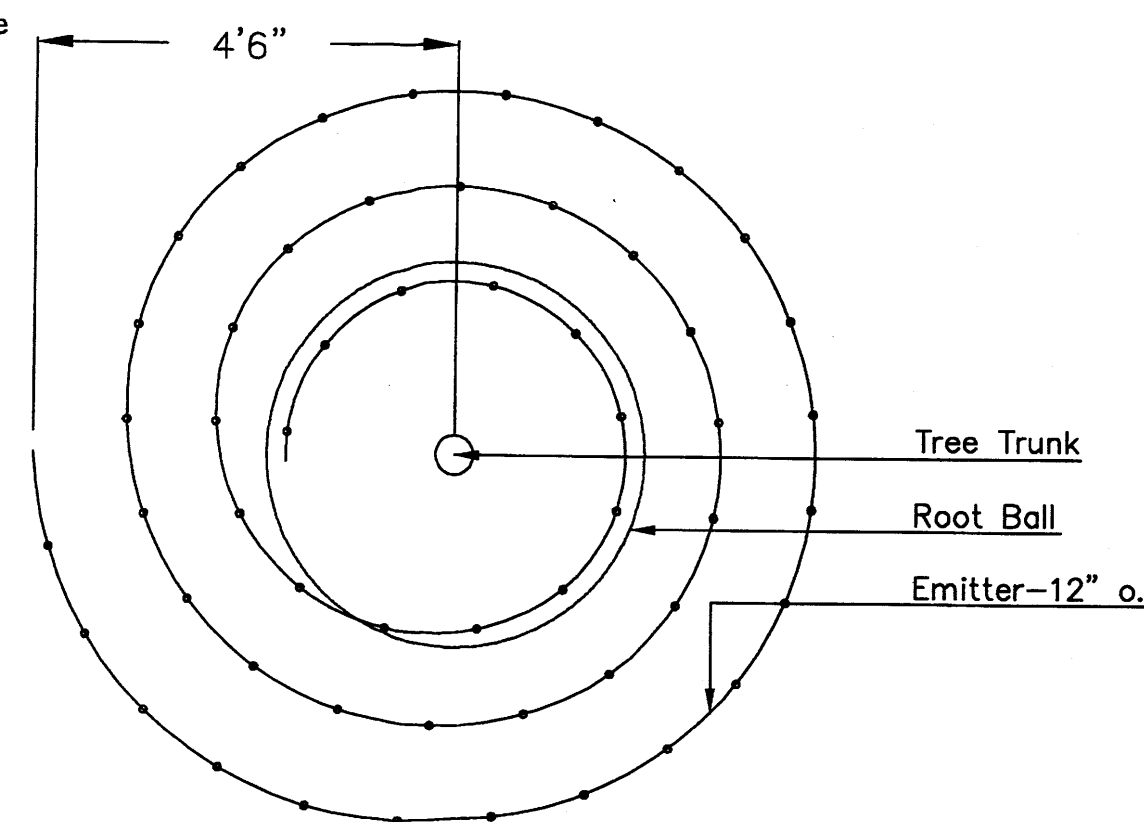
Run time per each shrub drip valve will be approximately 15 minutes per day. Tree drip valve shall run 1.5 hours, 3 times per week. Run time will be adjusted according to the season.

Point of connection for irrigation system is unknown at current time and will be coordinated in the field. Irrigation will be operated by automatic controller.

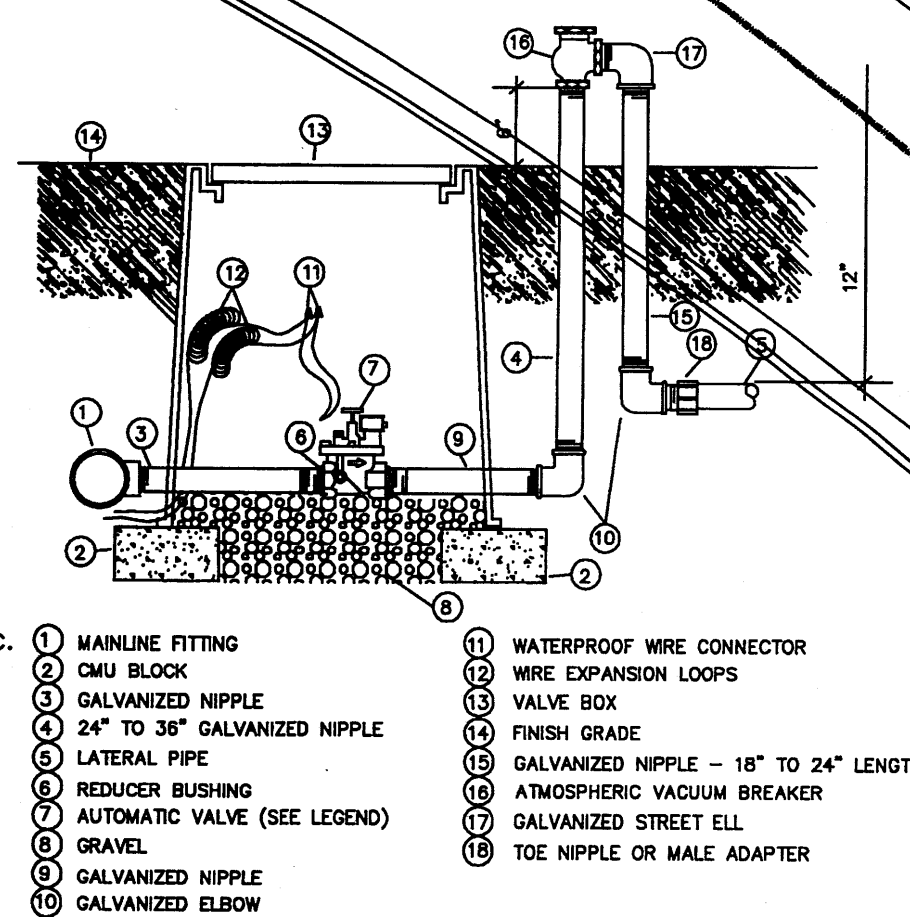
Location of controller to be field determined and power source for controller to be provided by others.

Irrigation maintenance shall be the responsibility of the Property Owner.

Water and Power source shall be the responsibility of the Developer/Builder.

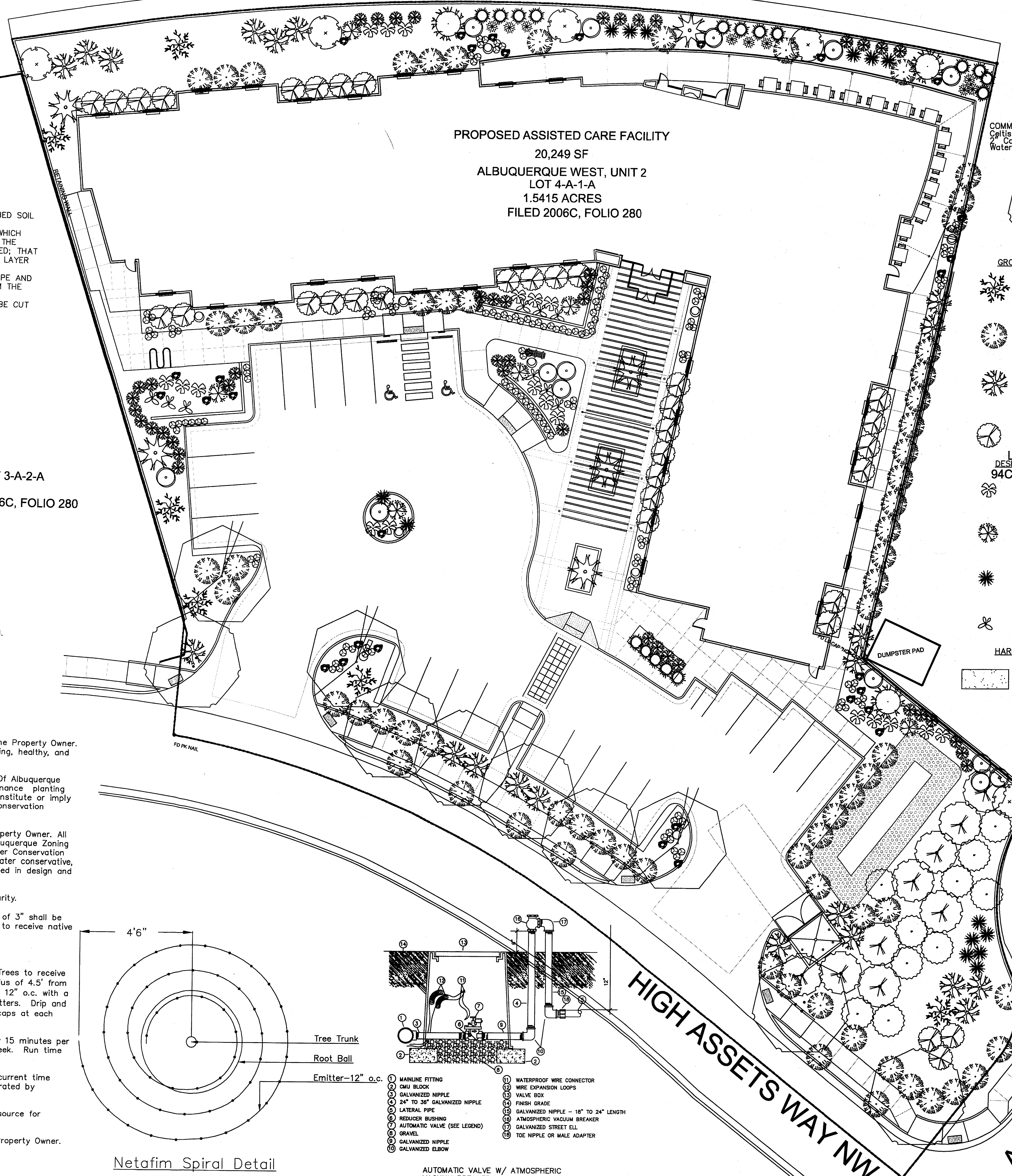


Netafim Spiral Detail



- ① MAINLINE FITTING
- ② CMU BLOCK
- ③ GALVANIZED NIPPLE
- ④ 24" TO 36" GALVANIZED NIPPLE
- ⑤ LATERAL PIPE
- ⑥ REDUCER BUSHING
- ⑦ AUTOMATIC VALVE (SEE LEGEND)
- ⑧ GRAVEL
- ⑨ GALVANIZED NIPPLE
- ⑩ GALVANIZED ELBOW
- ⑪ WATERPROOF WIRE CONNECTOR
- ⑫ WIRE EXPANSION LOOPS
- ⑬ VALVE BOX
- ⑭ FINISH GRADE
- ⑮ GALVANIZED NIPPLE - 18" TO 24" LENGTH
- ⑯ ATMOSPHERIC VACUUM BREAKER
- ⑰ GALVANIZED STREET ELL
- ⑱ TOE NIPPLE OR MALE ADAPTER

AUTOMATIC VALVE W/ ATMOSPHERIC VACUUM BREAKER

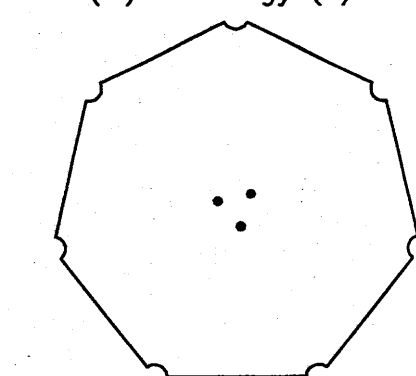


PROPOSED ASSISTED CARE FACILITY  
20,249 SF  
ALBUQUERQUE WEST, UNIT 2  
LOT 4-A-1-A  
1.5415 ACRES  
FILED 2006C, FOLIO 280

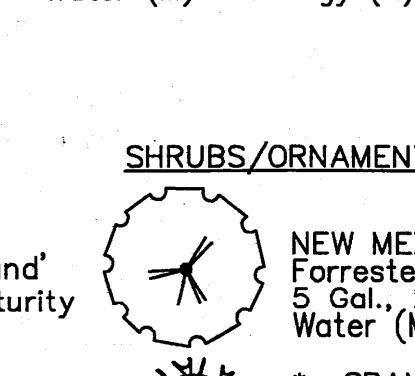
**PLANT LEGEND**

All plants shall be sized per American Standard for Nursery Stock. Installation size shall indicate the greater of height or spread. In cases where Type O plants have been pruned for rejuvenation, measurement should be by spread of roots rather than by the height.  
\* DENOTES EVERGREEN PLANT MATERIAL

COMMON HACKBERRY 7  
*Celtis occidentalis*  
12" Cal., 12"-14" Inst./40' x 40' maturity  
Water (M) Allergy (L) 0sf



AUTUMN PURPLE ASH 6  
*Fraxinus americana*  
2" Cal., 12"-14" Inst./60' x 60' maturity  
Water (M) Allergy (H) 0sf



**GROUNDCOVERS**

\* GREEN MOUND JUNIPER 23  
*Juniperus procumbens 'Green Mound'*  
5 Gal., 6"-15" Inst./8' x 8' maturity  
Water (L+) Allergy (H) 64sf

\* TAM JUNIPER 52  
*Juniperus sabinia 'Tamariscifolia'*  
5 Gal., 6"-15" Inst./4' x 15' maturity  
Water (L+) Allergy (L) 225sf

\* LADY BANK'S ROSE 43  
*Rosa banksiae*  
5 Gal., 24"-4' Inst./3' x 20' maturity  
Water (M) Allergy (L) 400sf  
Unstacked Groundcover

\* HONEYSUCKLE 28  
*Lonicera japonica 'Halliana'*  
1 Gal., 6"-15" Inst./3' x 12' maturity  
Water (M) Allergy (L) 144sf  
Unstacked Groundcover

**DESERT ACCENTS**

94C, FOLIO 278  
\* AGAVE spp.  
14"-18" Inst./4' x 4' maturity  
Water (L+) Allergy (L) 16sf

\* OCOTILLO 4  
*Fouquieria splendens*  
4"-6" Inst./15' x 10' maturity  
Water (L) Allergy (L) 0sf

\* RED YUCCA 28  
*Hesperaloe parviflora*  
1 Gal., 18"-3' Inst./3' x 4' maturity  
Water (L+) Allergy (L) 16sf

\* PRICKLY PEAR 3  
*Opuntia macrocentra*  
1 Gal., 12"-3' Inst./3' x 3' maturity  
Water (L) Allergy (L) 9sf

**HARDSCAPES**

SANTA FE BROWN GRAVEL WITH FILTER FABRIC TO A MINIMUM 3" DEPTH

**SHRUBS/ORNAMENTAL GRASSES**

\* NEW MEXICO OLIVE  
*Forsteria neomexicana*  
5 Gal., 2"-4' Inst./15' x 15' maturity  
Water (M) Allergy (L) 225sf

\* SPANISH BROOM 6  
*Genista hispanica*  
5 Gal., 2"-4' Inst./10' x 10' maturity  
Water (M) Allergy (L) 100sf

\* BUTTERFLY BUSH 16  
*Buddleia davidii*  
5 Gal., 12"-3' Inst./10' x 10' maturity  
Water (M) Allergy (L) 100sf

\* ROSE OF SHARON 1  
*Hibiscus syriacus*  
5 Gal., 2"-4' Inst./10' x 10' maturity  
Water (M) Allergy (L) 100sf

\* PAMPAS GRASS  
*Cortaderia selloana*  
5 gal., 2"-4' Inst./12' x 9' maturity  
Water (M+) Allergy (L) 81sf

\* RUSSIAN SAGE 39  
*Perovskia atriplicifolia*  
1 Gal., 18"-3' Inst./6' x 6' maturity  
Water (M) Allergy (L) 36sf

\* SCOTCH BROOM 3  
*Cytisus scoparius*  
1 Gal., 18"-3' Inst./4' x 4' maturity  
Water (M) Allergy (L) 16sf

\* BLUE MIST SPIREA 6  
*Caryopteris clandonensis*  
1 Gal., 12"-3' Inst./3' x 3' maturity  
Water (M) Allergy (L) 9sf

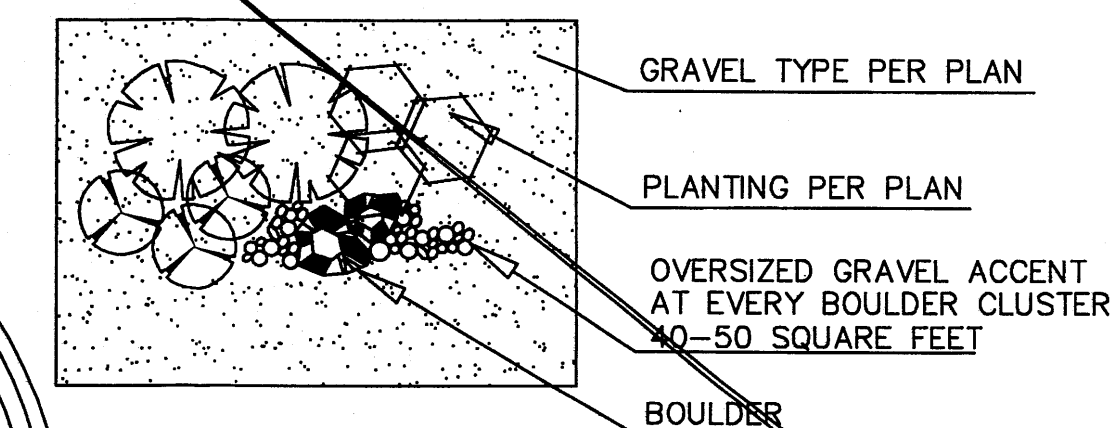
\* REGAL MIST 9  
*Muhlenbergia capillaris*  
1 Gal., 12"-3' Inst./3' x 3' maturity  
Water (M) Allergy (L) 9sf

\* WILDFLOWER 78  
1 Gal., 3"-15" Inst./varies at maturity  
Water (varies) Allergy (varies) 4sf

- OVERSIZED GRAVEL & BOULDERS
- ORNAMENTAL POT

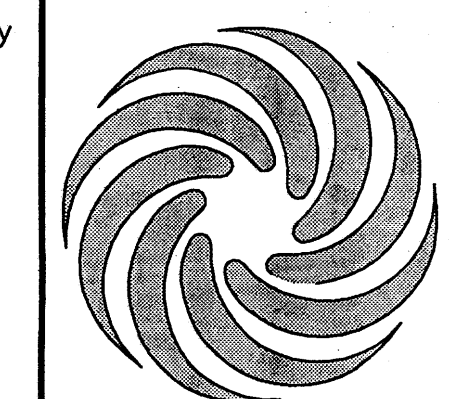
**NOTE TO CLIENT:**  
Should The Hilltop not receive a Grading and Drainage plan during the design process or the on-site grades differ from the Grading and Drainage plan received, The Hilltop reserves the right to apply slope stabilization materials where the specified gravel will not be suitable. Gravel smaller than 2" cobblestone will not stay on a slope steeper than 3:1. If the grades are greater than what was originally designed, we will request an infield change-order to lay cobblestone or rip-rap in lieu of the specified gravel, to stabilize the slope. All vegetative material shall remain per plan.

**GRAVEL ACCENT DETAIL**



REV	DATE	BY	REVISION

**MODULUS ARCHITECTS**  
2325 SAN PEDRO N.E. SUITE 2-B  
ALBUQUERQUE, NEW MEXICO 87110  
PHONE (505) 338-1499 FAX (505) 338-1498  
TOLL FREE 1-866-224-2161



PROJECT TITLE <b>ASSISTED LIVING S.E.C OF PASEO + EAGLE RANCH ROAD ALBUQUERQUE, NM</b>	PROJECT MANAGER Carrie Johnson	JOB NO.	DRAWN BY: cmj
SHEET TITLE <b>LANDSCAPE PLAN</b>			DATE: 2/12/10
SCALE: AS NOTED			SHEET: <b>LP1</b>



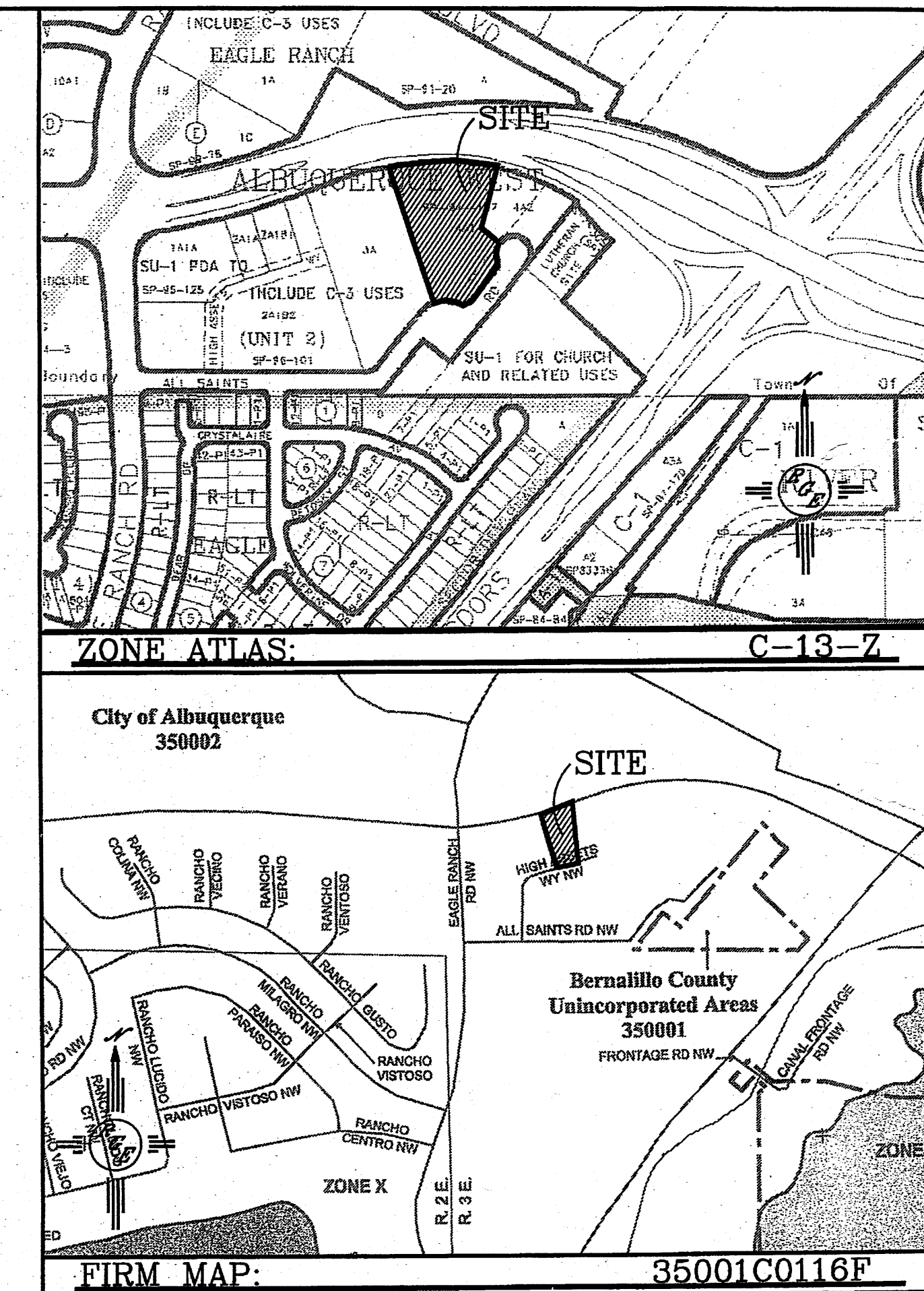
**EROSION CONTROL NOTES:**

- CONTRACTOR IS RESPONSIBLE FOR OBTAINING A TOPSOIL DISTURBANCE PERMIT PRIOR TO BEGINNING WORK.
- CONTRACTOR IS RESPONSIBLE FOR MAINTAINING RUN-OFF ON SITE DURING CONSTRUCTION.
- CONTRACTOR IS RESPONSIBLE FOR CLEANING ALL SEDIMENT THAT GETS INTO EXISTING RIGHT-OF-WAY.
- REPAIR OF DAMAGED FACILITIES AND CLEANUP OF SEDIMENT ACCUMULATIONS ON ADJACENT PROPERTIES AND IN PUBLIC FACILITIES IS THE RESPONSIBILITY OF THE CONTRACTOR.
- ALL EXPOSED EARTH SURFACES MUST BE PROTECTED FROM WIND AND WATER EROSION PRIOR TO FINAL ACCEPTANCE OF ANY PROJECT.

**NOTICE TO CONTRACTORS**

- AN EXCAVATION/CONSTRUCTION PERMIT WILL BE REQUIRED BEFORE BEGINNING ANY WORK WITHIN CITY RIGHT-OF-WAY.
- ALL WORK DETAILED ON THESE PLANS TO BE PERFORMED, EXCEPT AS OTHERWISE STATED OR PROVIDED HEREON, SHALL BE CONSTRUCTED IN ACCORDANCE WITH CITY OF ALBUQUERQUE INTERIM STANDARD SPECIFICATIONS FOR PUBLIC WORKS CONSTRUCTION, 1985.
- TWO WORKING DAYS PRIOR TO ANY EXCAVATION, CONTRACTOR MUST CONTACT LINE LOCATING SERVICE, 785-1234, FOR LOCATION OF EXISTING UTILITIES.
- PRIOR TO CONSTRUCTION, THE CONTRACTOR SHALL EXCAVATE AND VERIFY THE HORIZONTAL AND VERTICAL LOCATIONS OF ALL CONSTRUCTIONS. SHOULD A CONFLICT EXIST, THE CONTRACTOR SHALL NOTIFY THE ENGINEER SO THAT THE CONFLICT CAN BE RESOLVED WITH A MINIMUM AMOUNT OF DELAY.
- BACKFILL COMPACTION SHALL BE ACCORDING TO TRAFFIC/STREET USE.
- MAINTENANCE OF THESE FACILITIES SHALL BE THE RESPONSIBILITY OF THE OWNER OF THE PROPERTY SERVED.
- WORK ON ARTERIAL STREETS SHALL BE PERFORMED ON A 24-HOUR BASIS.

APPROVAL	NAME	DATE
INSPECTOR		



**LEGAL DESCRIPTION:**

lot 4-A-1-A, ALBUQUERQUE WEST, UNIT 2

**NOTES:**

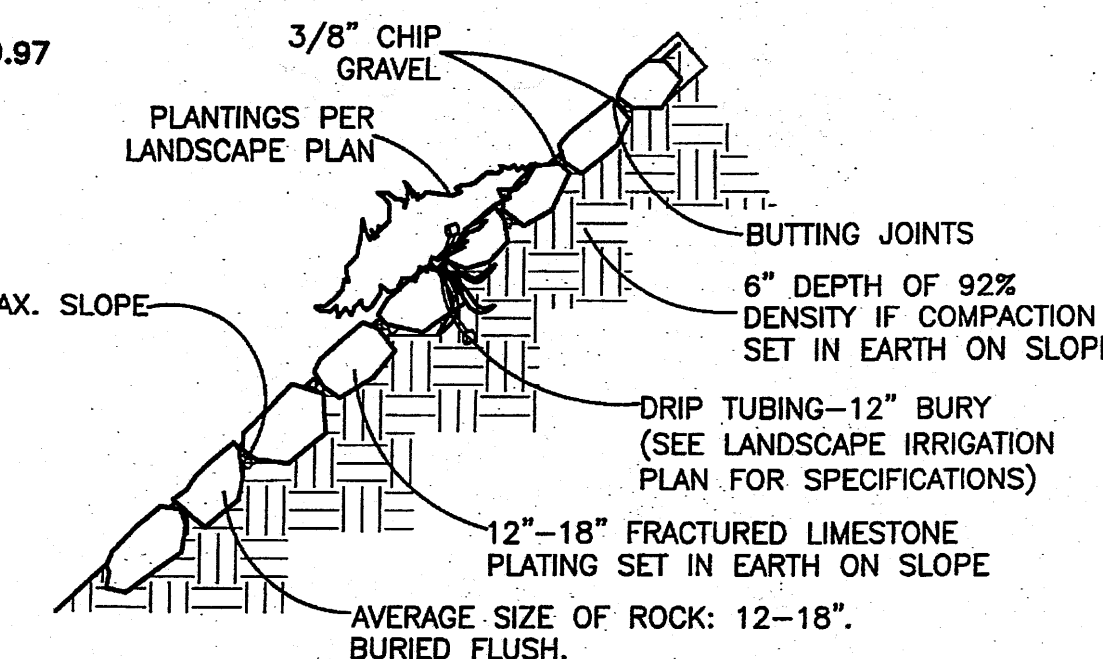
- ALL SPOT ELEVATIONS REPRESENT FLOWLINE ELEVATION UNLESS OTHERWISE NOTED.
- ALL RETAINING WALL DESIGNS TO BE BY OTHERS.

**DRAINAGE NARRATIVE:**

THIS SITE IS LOCATED WITHIN THEM MASTER DRAINAGE PLAN AREA OF ALBUQUERQUE WEST. PER DRAINAGE MASTER PLAN SITE IS ALLOWED TO DISCHARGE 1.28 CFS PER ACRES. SITE GRADING WILL COLLECT FLOWS AND ROUTE THEM THROUGH DETENTION POND LOCATED AT EAST END OF SITE. POND WILL DISCHARGE TO EXISTING ROADWAY AT 1.97 CFS

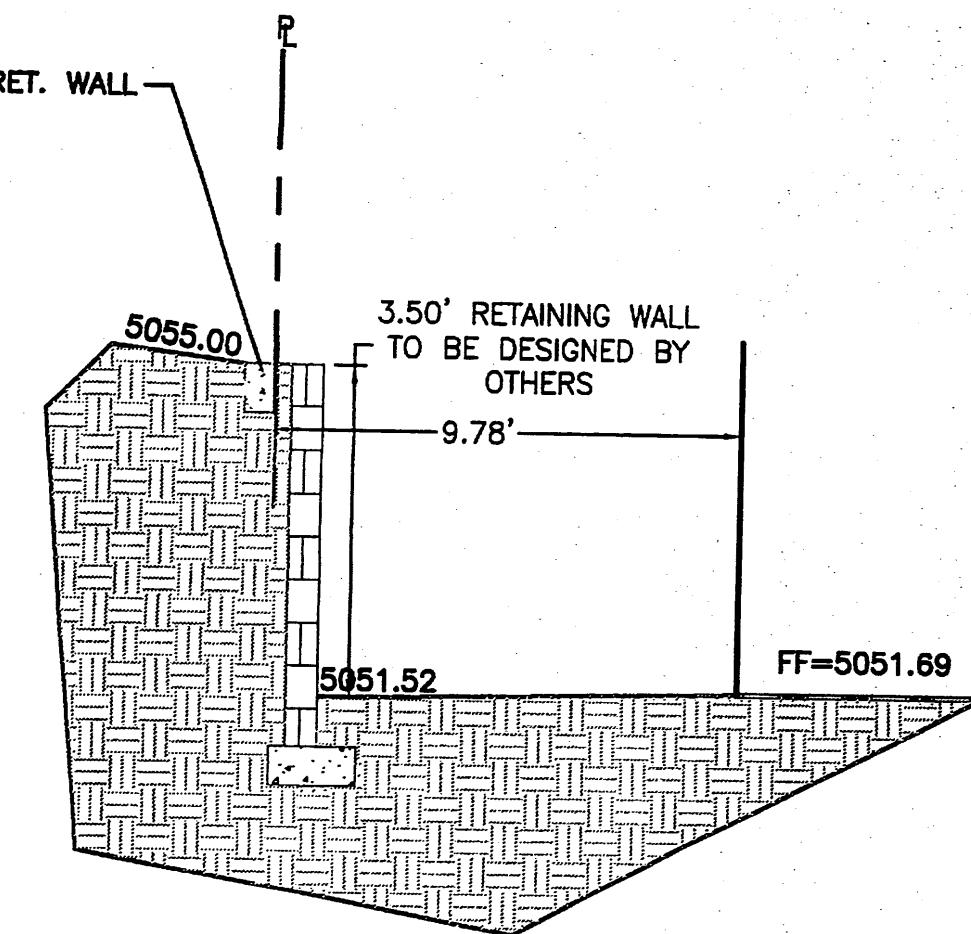
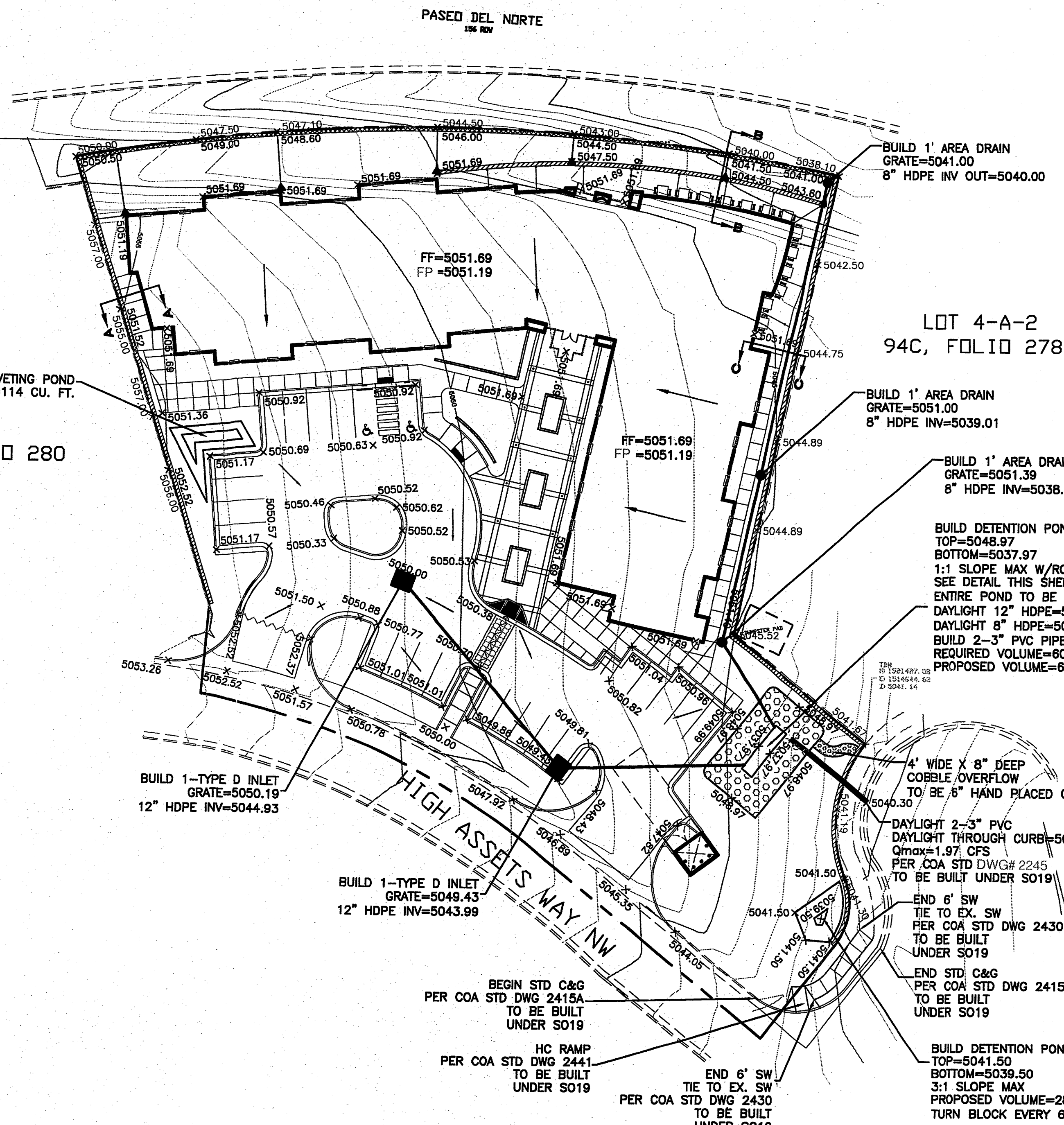
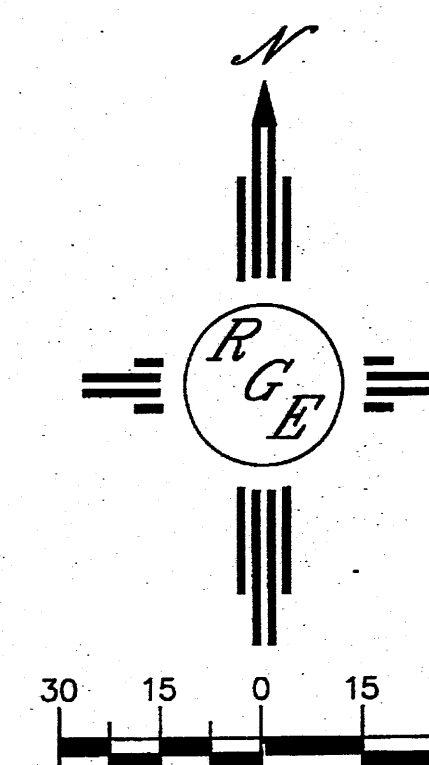
**LEGEND**

— 5414 —	EXISTING CONTOUR
— 5415 —	EXISTING INDEX CONTOUR
— 5414 —	PROPOSED CONTOUR
— 5415 —	PROPOSED INDEX CONTOUR
— 5416 —	SLOPE TIE
× 4048.25	EXISTING SPOT ELEVATION
× 4048.25	PROPOSED SPOT ELEVATION
---	BOUNDARY
---	CENTERLINE
---	RIGHT-OF-WAY
====	PROPOSED CURB AND GUTTER
====	EXISTING CURB AND GUTTER
====	PROPOSED RETAINING WALL



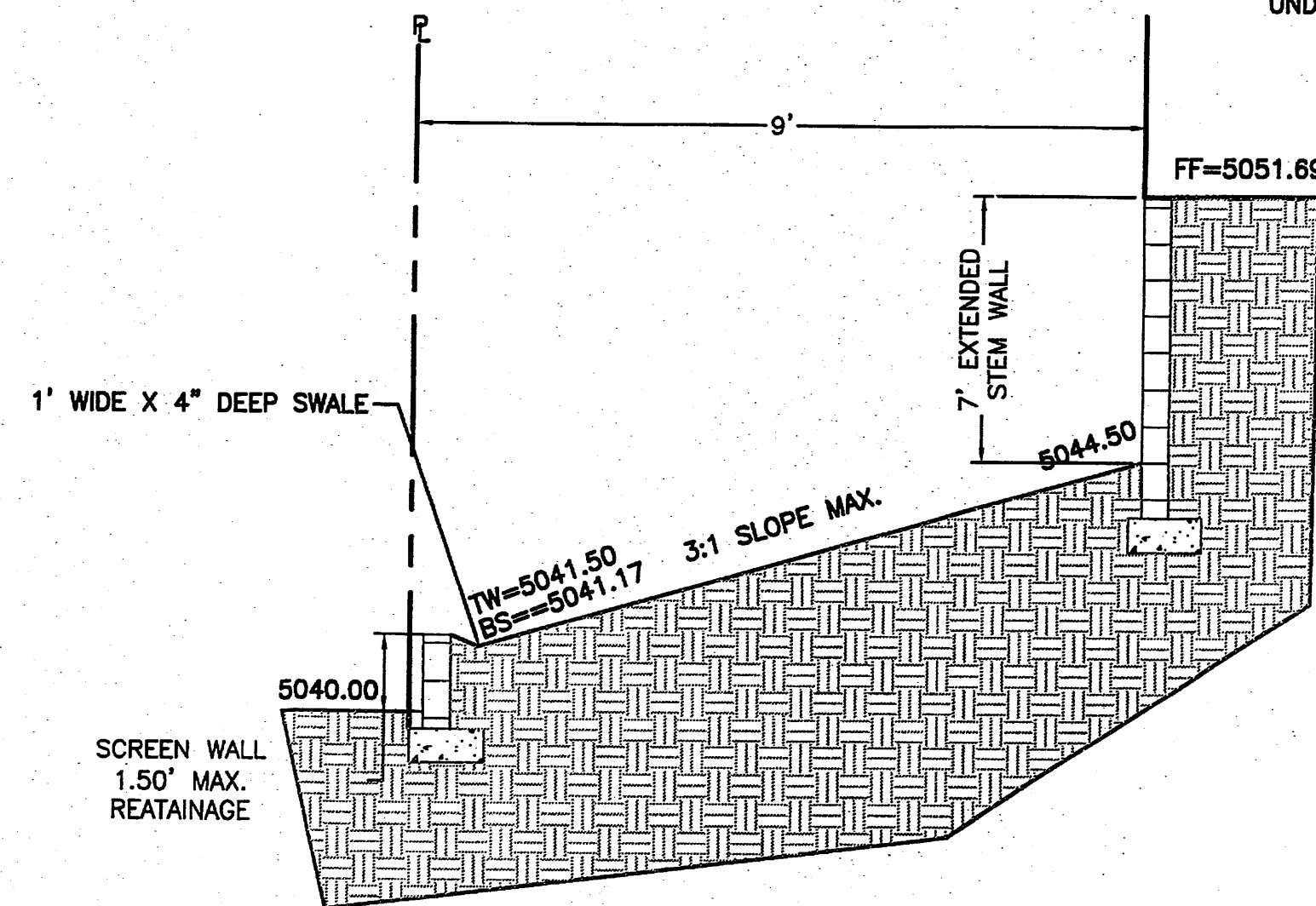
**ROCK PLATING DETAIL**

NTS



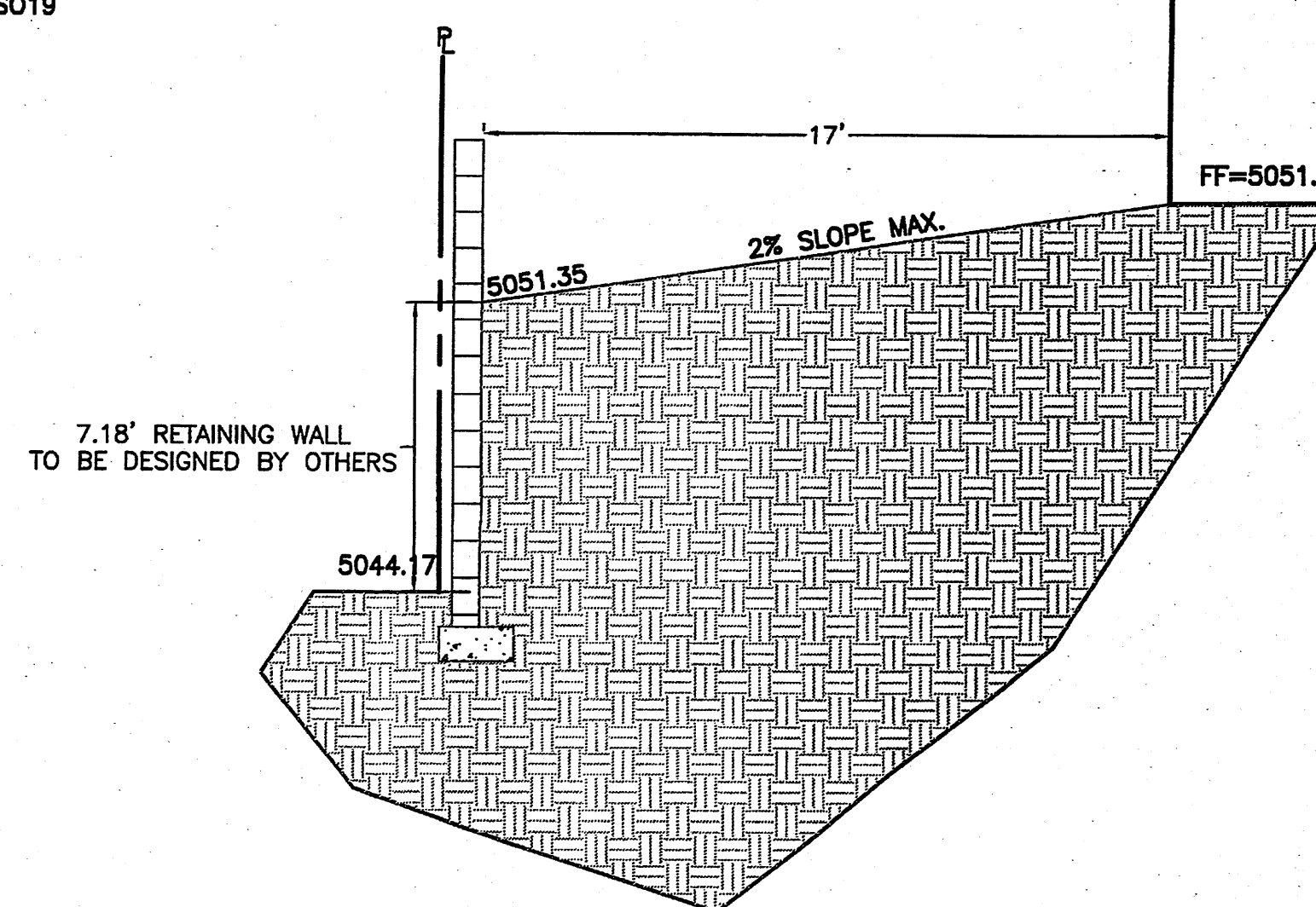
**SECTION A-A**

NTS



**SECTION B-B**

NTS



**SECTION C-C**

NTS

**CAUTION:**  
EXISTING UTILITIES ARE NOT SHOWN. IT SHALL BE THE SOLE RESPONSIBILITY OF THE CONTRACTOR TO CONDUCT ALL NECESSARY FIELD INVESTIGATIONS PRIOR TO ANY EXCAVATION TO DETERMINE THE ACTUAL LOCATION OF UTILITIES & OTHER IMPROVEMENTS.

ENGINEER'S SEAL	ASSISTED LIVING-SEC PASEO DEL NORTE AND EAGLE RANCH ROAD	DRAWN BY WCWJ
	GRADING AND DRAINAGE PLAN	DATE 4-04-11
		21103-LAYOUT-2-14-11
DAVID SOULE P.E. #14522	1006 CENTRAL AVENUE SE SUITE 201 ALBUQUERQUE, NM 87106 (505) 872-0999	SHEET #
		JOB # 21103