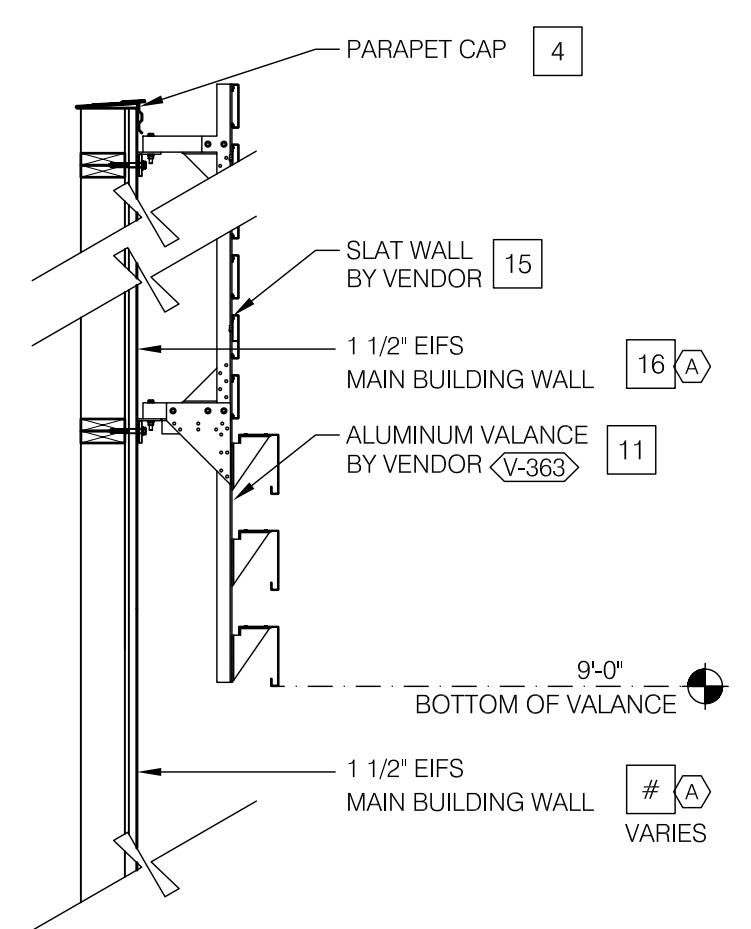
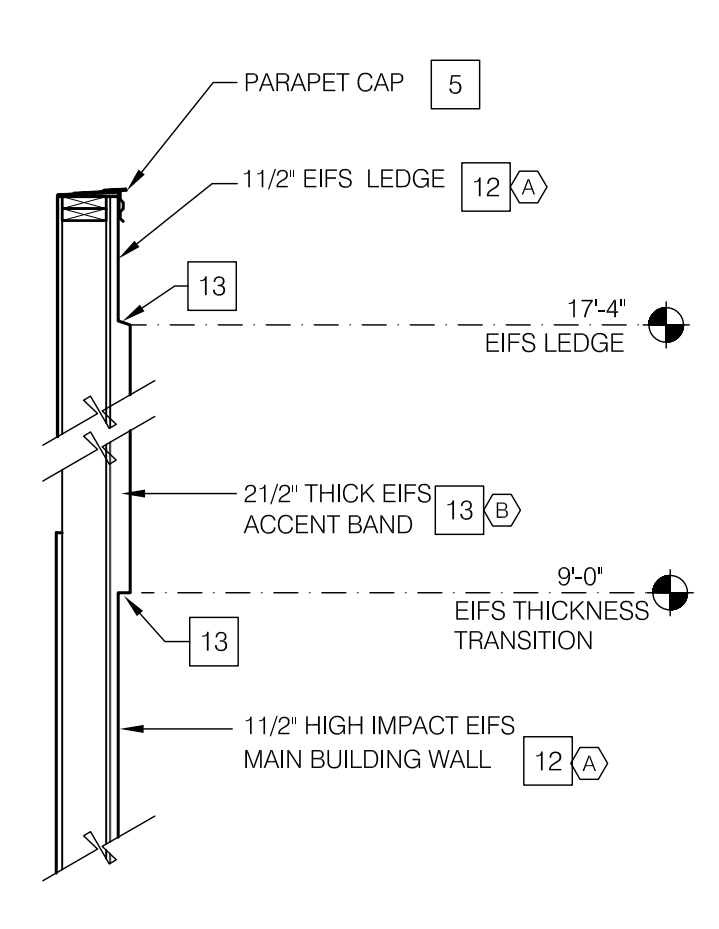


**(SOUTH) RIGHT SIDE ELEVATION** 1/4"=1'-0" **A**



**SLAT WALL COLOR TRANSITION** N.T.S. **I**



**EIFS THICKNESS COLOR TRANSITION** N.T.S. **G**

**MISCELLANEOUS**

A. SEE SHT A1.1 "WINDOW TYPES" FOR WINDOW ELEVATIONS.  
 B. E.I.F.S. TEXTURE SHALL NE "FINE".

**SEALERS (REFER TO SPECS):**  
 A. SEALANT AT ALL WALL AND ROOF PENETRATIONS.  
 B. SEALANT AT ALL WINDOW AND DOOR FRAMES AT HEAD AND JAMB. DO NOT SEAL SILL @ WINDOWS.  
 C. APPLY NEOPRENE GASKET (CONT.) BETWEEN BUILDING & CANOPY.

**"CRITICAL" DIMENSIONS:**  
 A. REQUIRED CLEAR OPENING WIDTH TO ENSURE COORDINATION WITH STANDARD SIGNAGE/ BUILDING ELEMENTS DIMENSIONS.

NOTE: NO EXTERIOR SIGNS ARE WITHIN THE SCOPE OF WORK COVERED BY THE BUILDING PERMIT APPLICATION. THE GENERAL CONTRACTOR SHALL BE RESPONSIBLE FOR COORDINATING THE INSTALLATION OF ALL EXTERIOR SIGNS AND INSTALLATION OF REQUIRED BLOCKING AND ELECTRICAL CONNECTIONS FOR FINAL APPROVED SIGNS.

DENOTES 2-1/2" THICK E.I.F.S.

**GENERAL NOTES** **F**

A. ALL PROPOSED SIGNAGE SHALL COMPLY WITH THE SIGNAGE PROVISIONS OF THE C1 ZONE OF THE ZONING CODE SECTION 14-16-2-16.

(A) BASE THICKNESS - 1-1/2" THICK E.I.F.S.  
 (B) BASE THICKNESS - 2-1/2" THICK E.I.F.S.

PROVIDE HIGH IMPACT MESH FOR E.I.F.S. THICKNESS UP TO A HEIGHT OF 6'-0" SEE 2 & 4 / A6.2

NOTE: SIGNAGE UNDER SEPARATE PERMIT

QTY	ITEM DESCRIPTION	ELEC
2	TACO BELL 'BELL' SIGN 4'-10 1/2"W x 4'-2"H	X
3	TACO BELL LETTERS 12" HIGH, WHITE, FLAT FACED	X

**GENERAL NOTES** N.T.S. **E**

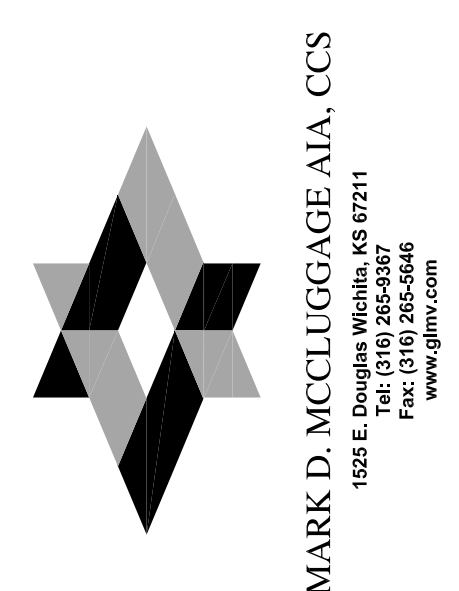
**SIGN SCHEDULE** N.T.S. **C**

SYMBOL	AREA	MANUFACTURER	COLOR	ALTERNATE MFR.	ALTERNATE COLOR	CONTACT INFORMATION
1	CANOPY RAFTER/ BEAM PAINT	SHERWIN WILLIAMS	SW3022 'WOODSCAPES BLACK ALDER'			SHERWIN WILLIAMS; BRAD HARRINGTON, 216-228-54988 (PHONE), BRAD.E.HARRINGTON@SHERWIN.COM (EMAIL)
2	CANOPY COLUMN PAINT	SHERWIN WILLIAMS	SW 7062 ROCK BOTTOM			
3	PARAPET CAP (TOWER)	DUROLAST (25)	MEDIUM BRONZE (FACTORY FINISH)	SHERWIN WILLIAMS	SW 7069 'IRON ORE'	DURO-LAST; LEE COBB, 800-434-3876 (PHONE)
4	PARAPET CAP (FRONT)	DURALAST	SHERWIN WILLIAMS SW6832 'IMPULSE PURPLE' EGG SHELL (P-4)			
5	PARAPET CAP (SIDES)	DUROLAST (25)	REGAL WHITE (FACTORY FINISH)			
6	PARAPET CAP (COOLER)	DUROLAST (25)	GALVALUME PLUS (FACTORY FINISH)			
7	STOREFRONT WINDOWS	TBD	CLEAR ANODIZED			
8	PIPE BOLLARDS	STREET SMART	YELLOW - 1/4" THICK PLASTIC COVER (US.POSTMAN.COM) OR EQUAL			
9	PARAPET BACK ROOFING	DUROLAST	THE COLOR SHALL BE FACTORY COLORED "TAN." EQUAL ALTERNATE ALLOWED.			DURO-LAST; LEE COBB, 800-434-3876 (PHONE)
10	STO-GUARD TRANSITION MEMBRANE	STO				
11	SLAT WALL AND VALANCE COLOR	VENDOR	SW 7034 'STATUS BRONZE' (EQUAL)			
12	MAIN BUILDING COLOR	SHERWIN WILLIAMS	SW7062 'ROCK BOTTOM'			SHERWIN WILLIAMS; BRAD HARRINGTON, 216-341-5558 X115 (PHONE), BRAD.E.HARRINGTON@SHERWIN.COM
13	ACCENT COLOR	SHERWIN WILLIAMS	SW 6098 'PACER WHITE'			EIFS CONTACT: STO CORP.; CHUCK DUFFIN, 940-894-2092 (PHONE), 940-894-2095 (FAX), CDUFFIN@STOCORP.COM
14	METAL PANELS	WESTERN STATES METAL ROOFING	18" A606-4 RUSTWALL PANELS			
15	SLAT WALL	VENDOR	WOOD GRAIN EMBOSSED COLOR BY VENDOR			
16	WALL COLOR BEHIND SCREEN WALL	SHERWIN WILLIAMS	SW 6831 'CLEMATIS'			

**EXTERIOR FINISH SCHEDULE** **H**

- 1 BUILDING SIGN, BY VENDOR. REQUIRES ELECTRICAL, SEE ELECTRICAL PLANS.
- 2 DRIVE THRU WINDOW. SEE SHEET A1.0 AND A1.1.
- 3 DASHED LINE INDICATES ROOF BEYOND.
- 4 STOREFRONT, TYPICAL.
- 5 TUBE STEEL POST. SEE STRUCTURAL DWGS.
- 6 SWITCH GEAR, PAINT TO MATCH WALL.
- 7 CORRUGATED METAL ROOF.
- 8 LIGHT SCONCE. ALIGN BOTTOM OF FIXTURE'S MOUNTING BRACKET WITH CHANGE IN EIFS THICKNESS (CENTER OF BRACKET AT 9'-6").
- 9 ASSUME D/T LANE SURFACE IS 6" BELOW THE FINISH FLOOR. REFER TO GRADING & SITE PLAN.
- 10 E.I.F.S. REVEAL JOINT. SEE DETAIL 20/A6.2
- 11 TOWER WITH METAL PANEL FINISH.
- 12 PARAPET COPING, IF DURO-LAST EDGE TRIM IS USED. USE THE DURO-LAST PRE-FINISHED EDGE TRIM. SEE DETAIL 2/A6.0.
- 13 CO2 FILLER VALVE & COVER. SEE DETAIL 5/A6.2 SIM.
- 14 NOT USED.
- 15 GAS SERVICE.
- 16 WALL SHALL BE FINISHED PRIOR TO INSTALLATION OF SWITCHGEAR.
- 17 SCUPPER, COLLECTOR, AND VERTICAL DOWNSPOUT 6" MIN. PAINT TO MATCH ADJACENT WALL.
- 18 CONCRETE CURB.
- 19 RTU BEYOND. PAINT TO MATCH MAIN BUILDING COLOR.
- 20 BREAK METAL COVER OVER WOOD STUDS TO MATCH STOREFRONT. SEE 3/A6.1
- 21 OVERFLOW SCUPPER
- 22 STEEL BEAM. SEE STRUCTURAL DWGS.
- 23 BOLLARD
- 24 DUROLAST SINGLE MEMBRANE ROOFING OR EQUAL.
- 25 IF THE DURO LAST PARAPET CAP TRIM IS USED IT SHALL NOT BE PAINTED. NOT USED.
- 26 NOT USED.
- 27 WOOD RAILING.
- 28 NOTE USED.
- 29 STOREFRONT DOOR. REFER TO DOOR SCHEDULE.
- 30 HOSE BIBB LOCATION. REFER TO PLUMBING AND DETAIL 8/A6.2
- 31 GUTTER AND DOWNSPOUT. PAINT TO MATCH COLUMN
- 32 METAL AWNING - BY OTHERS
- 33 LED STRING LIGHT FIXTURE. REFER ELECTRICAL
- 34 STUCCO (TYP). SEE 2 & 4/A6.2.

**KEY NOTES** **D**



12134.240

- 2016.11.11 - REVISION 1
- 2016.11.29 - REVISION 2
- 2016.12.13 - SIGNS
- DRB 1ST SUB 03.02.17

CONTRACT DATE: JUNE 07, 2016  
 BUILDING TYPE: EXP. LITE MED40  
 PLAN VERSION: SEPTEMBER 2015  
 SITE NUMBER: --  
 STORE NUMBER: --

**TACO BELL**  
 UNSER BLVD NW & LADERA  
 ALBUQUERQUE, NM 87114



**EXTERIOR ELEVATIONS**  
**A4.0**