

### GENERAL NOTES

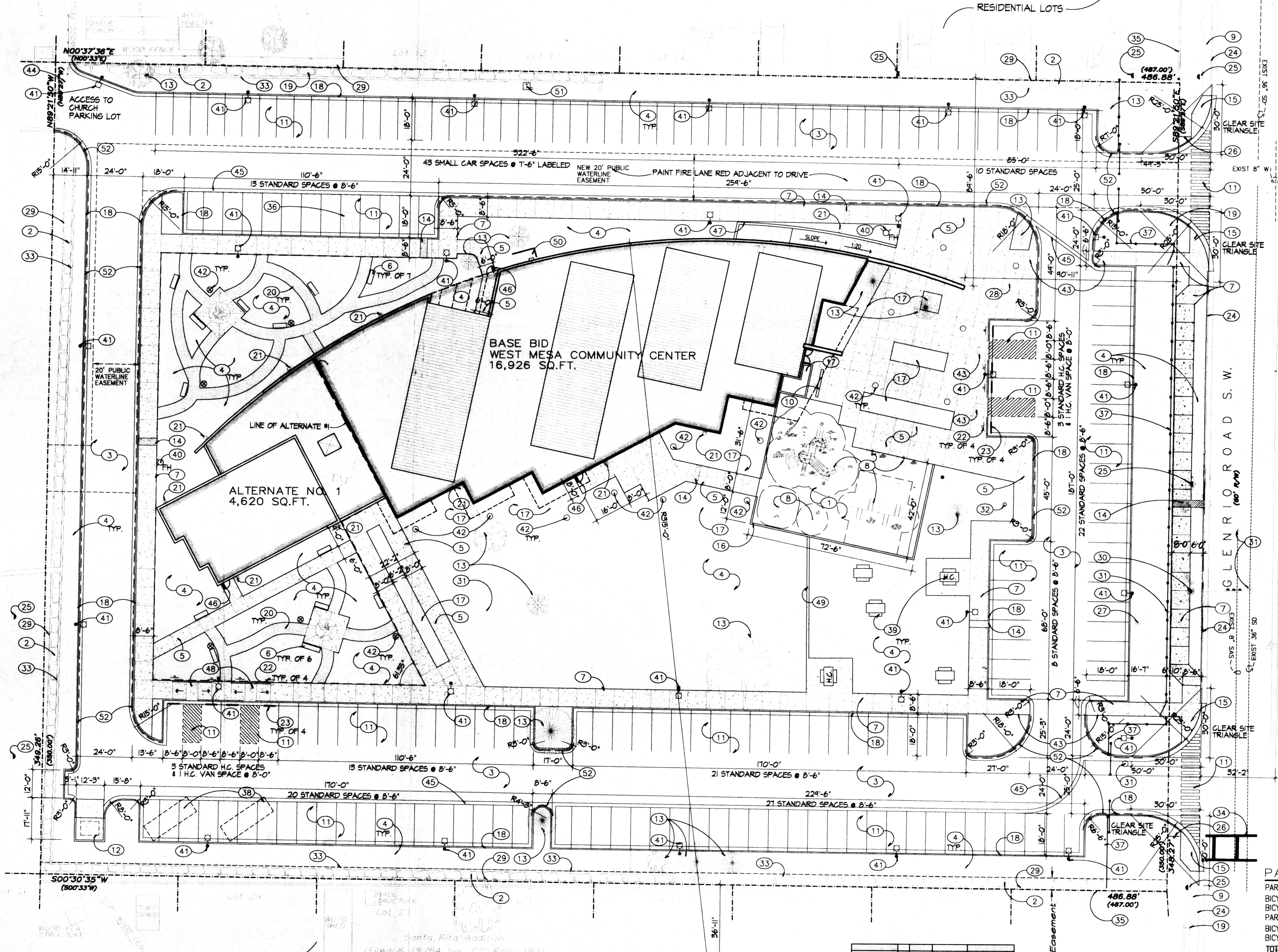
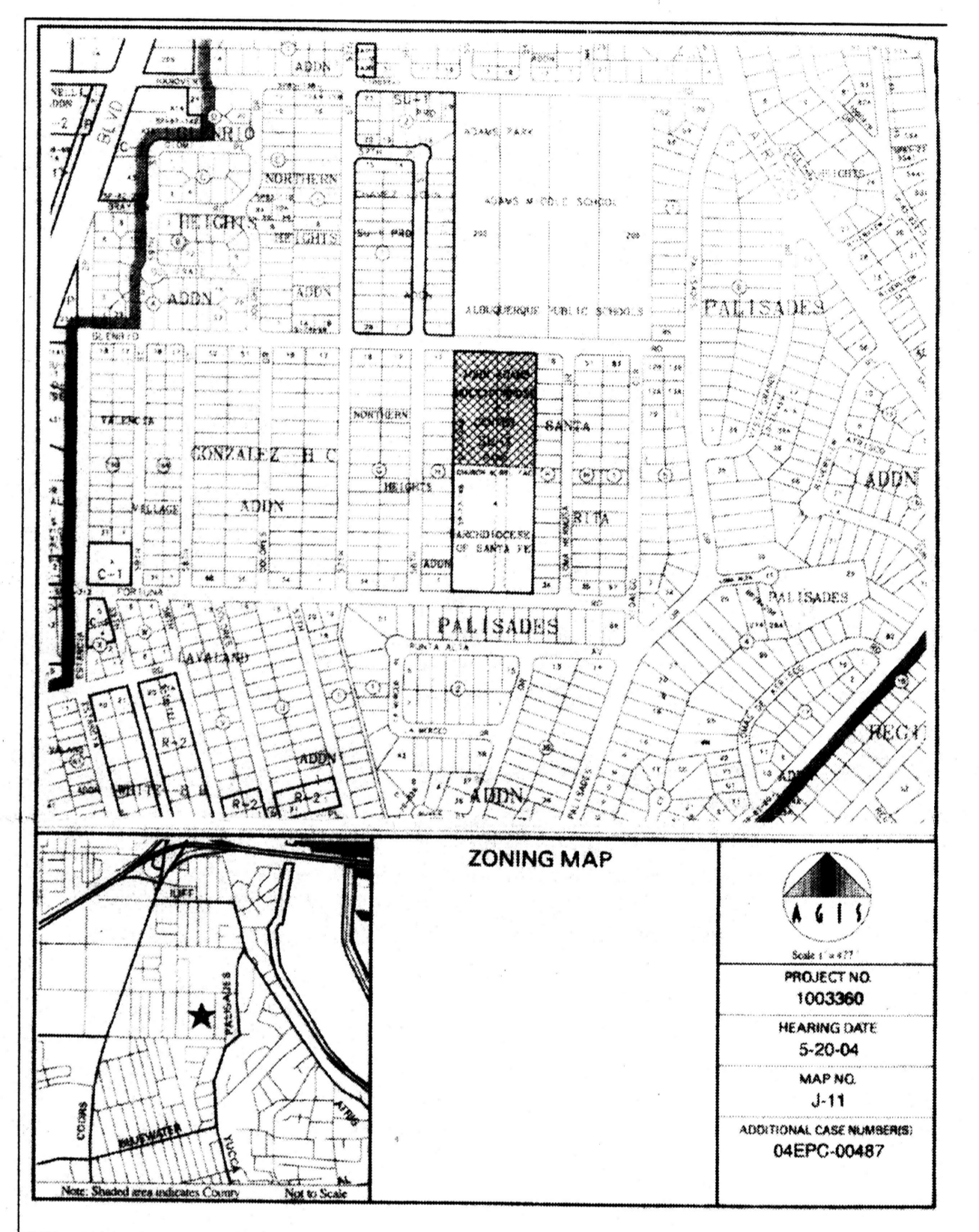
1. CONSTRUCT SITE ENTRANCE (C.O.A. STD. DWG. 2426), SIDEWALK (DWG. 2430), HANDICAP RAMPS (DWG. 2426), STANDARD CURB AND GUTTER (DWG. 2415A) AND VALLEY GUTTER (DWG. 2420) WITHIN R.O.W. MATCH EXISTING FL AND TC ELEVATIONS TO PROVIDE A SMOOTH TRANSITION. USE QUARTERPOINT ELEVATIONS AS SHOWN.

### KEYED NOTES

1. Engineered bark chips, install for ADA compliance and "head drop" safety ratings. Available from Western Organics - 877-8672.
2. Existing vegetation to remain.
3. New asphalt parking lot. See Detail A-3/CI-201.
4. New landscaping. See L-101.
5. New 4" concrete plaza paving. Use City Standards w/ 3/8" aggregate mix w/ Davis Prem. color, to be selected by Architect.
6. Mtl. benches, DuMor, Inc. Model #8860PL, S-1, typ. of 13, Part of Alt. No. 1.
7. New 8'-6" wide concrete sidewalk per C.O.A. Detail 2430 and A-1/CI-201.
8. New playground equipment, see Enlarged Plan, Sheet CI-102.
9. Existing 4' wide concrete sidewalk to remain.
10. Bike rack, see C-4/CI-201.
11. New striping, see D-1/CI-201.
12. New dumpster pad with cmu wall, see B-2/CI-201.
13. Existing tree to remain.
14. New trench drain. Width according to Civil, see COA dwg. 2236.
15. New H.C. ramp as per C.O.A. Detail 2426.
16. New header curb, per C.O.A. Detail 2729.
17. New planter, see L-101.
18. New curb and gutter sim. to City detail 2415A. See A-4/CI-201.
19. Existing signage to remain.
20. New 5'-0" wide asphalt walkway, part of Alt. No. 1.
21. Concrete splash block at roof drains, see A-2/CI-201.
22. H.C. parking sign w/ van accessible sign. See dtl. C-5/CI-201.
23. New parking bumper.
24. Existing curb and gutter to remain.
25. Existing power pole to remain.
26. Existing pedestrian crossing sign.
27. Existing water meter.
28. Relocated existing horse-head sundial.
29. Existing 6'-0" high chain link fence to remain.
30. Existing traffic mast arm sign to remain.
31. Existing manhole. Set to new grade.
32. New 25'-0" high flag pole install as per manuf. Reinstall existing plaque in concrete.
33. Existing concrete mow strip to remain.
34. Existing crosswalk striping.
35. Existing 6'-0" cmu wall to remain.
36. Metal cover drop inlet. Replace with traffic rated cover.
37. New 6'-0" metal fence and gates, Ameristar Aegis II Majestic Style, 3 rail fence. 1-800-321-8724.
38. Proposed location of recycle bins.
39. New picnic tables, DuMor, Inc. Table 100, Model #100-80PL, typ. of 3. H.C. Model #100-68-PL, typ. of 2.
40. New fire hydrant.
41. New 16'-0" pole mounted site lighting directed away from adjacent neighborhood. See Electrical.
42. New bollard site lighting directed away from adjacent neighborhood. See Electrical.
43. New H.C. ramp, see D-3/CI-201.
44. Existing gate.
45. New valley gutter as per COA detail 2420.
46. New hair pin door stop. See B-3/CI-201.
47. Elevated walk & seating area. See D-4/CI-201.
48. New H.C. ramp. See D-2/CI-201.
49. New 12" concrete mowstrip, sim. to C.O.A. Detail 2726.
50. 48" x 8'-0" x 6'-8" high brick screen wall. Exact location to be determined after the gas and electrical meters are set. See C-3/CI-201.
51. New transformer, see Electrical.
52. Dashed line indicates fire lane. Paint curbs red, stencil "FIRE LANE NO PARKING" in white on red curb.

### A-5 LIGHT FIXTURES

SCALE: NTS



### PARKING

PARKING REQUIRED FOR BASE BID: 146  
 BICYCLE SPACES REQUIRED 2/3: 7  
 BICYCLE SPACES PROVIDED: 7  
 PARKING REQUIRED FOR ALT. NO. 1: 42  
 BICYCLE SPACES REQUIRED 2/3: 2  
 BICYCLE SPACES PROVIDED: 2  
**TOTAL PARKING REQUIRED FOR BASE BID AND ALT. NO. 1: 188**  
 PARKING PROVIDED (INCLUDES 43 SMALL CAR SPACES, <25 % OF TOTAL PARKING ALLOWED): 185  
 BICYCLE SPACES PROVIDED: 9  
 \*Includes 8 H.C. spaces req'd. H.C. spaces provided: 8

March 31, 2004  
 revised March 10, 2005

Edith Cherry  
 D. James See  
 Architects  
 2204 Gold SW Albuquerque, New Mexico, 87102 505 842 1278